

# Project Review

## Catalent, Swindon

### Background

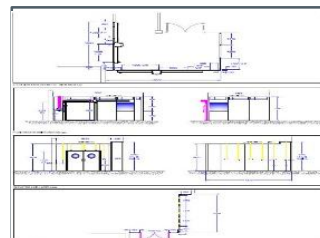
Catalent are a well-known international pharmaceutical company with over 75 years of experience in their field. Their services range from drug and biologic development services through delivery technologies to supply solutions.

### Requirement

To manufacture and deliver 50mm flush panels, doors, vision panels, ancillaries and cappings for Catalent to refurbish their drug production facility in Swindon.

### Solution

Manufacturing high specification Puracore Aluminium Honeycomb core panels suitable for high quality fully flush, sealed cleanroom environment classifications: EN ISO 14644: ISO 3+ Class 10+.



Project Details	
Project	Supplying Puracore cleanroom panels
Location	Swindon, UK
Application	Pharmaceutical cleanroom
Panel Facing	Polyester painted
Panel Core	Aluminium Honeycomb core
Panel Type	Fully flush
Panel Thickness	50mm
Vision Panels	Fully flush
Approvals	FM 4882, ASTM E84, ASTM E72
Doors	Clamp frame doors with vision panels