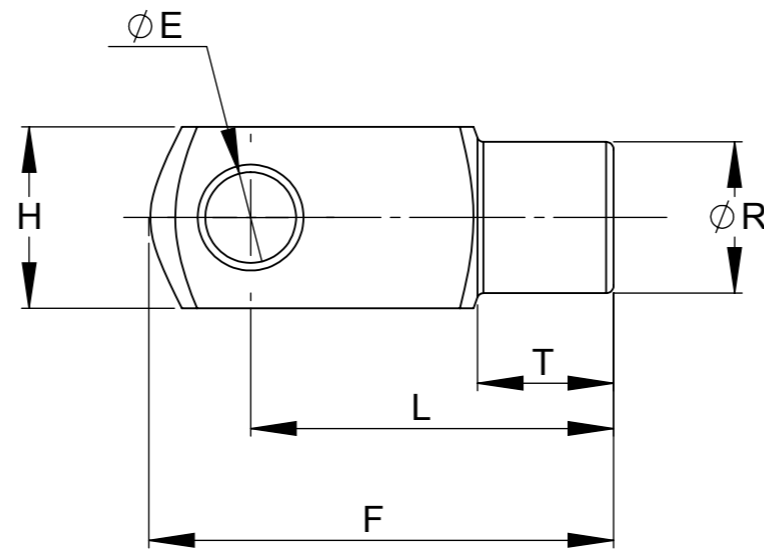
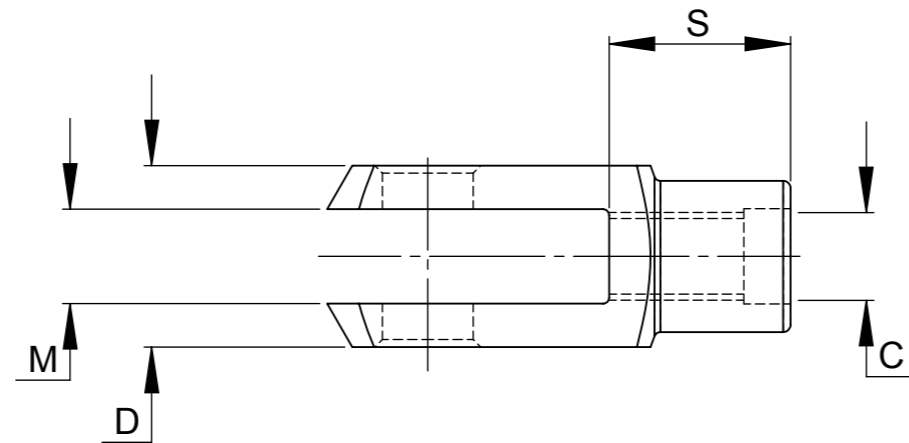


CODE	PART NO	DIMENSION										MATERIAL	FINISH
		C	D	E	F	H	L	M	R	S	T		
C1	06-0033	M5x0.8	10.0	5.00/5.030	26.0	10.0	20.0	5.15	9.0	10.0	7.5	STEEL	PLATED
C2	08-0035	M6x1.0	12.0	6.00/6.036	31.0	12.0	24.0	6.25	10.0	12.0	9.0	STEEL	PLATED
C3	10-0037	M8x1.25	16.0	8.00/8.036	42.0	16.0	32.0	8.15	14.0	16.0	12.0	STEEL	PLATED
C4	14-0132	M10x1.5	20.0	10.00/10.036	49.0	20.0	37.0	10.3	18.0	17.0	12.0	STEEL	PLATED
TOLERANCES		6H	±0.5	H9	±0.25	±0.5	±0.25	±0.12	±0.25	±0.25	±0.25		
H1	08-4337	M6x1.0	12.0	6.00/6.036	31.0	12.0	24.0	6.25	10.0	12.0	9.0	STAINLESS 303	NATURAL
H2	10-4338	M8x1.25	16.0	8.00/8.036	42.0	16.0	32.0	8.25	14.0	16.0	12.0	STAINLESS 303	NATURAL
TOLERANCES		6H	±0.25	H9	±0.25	±0.25	±0.25	±0.12	±0.25	±0.25	±0.25		



- NOTES:**
1. GENERALLY TO DIN 71752 STANDARD
 2. $\varnothing E$ H9 FIT TO SUIT PIN $\varnothing h11$



CAMLOC MOTION CONTROL LTD
Manufacturers of Camloc Gas Springs
 15 New Star Road, Leicester, LE4 9JD, England
 Tel: +44 (0) 116 274 3600
 Email: info@camloc.com
 Website: www.camloc.com

DRAWING DATA	
DRAWN: GAH	PROJECT N°: EN1494P
DATE: 06.11.09	
SCALE: 2:1	

TITLE: GENERAL: CLEVIS (SALES DWG)	
CUSTOMER: CMCL	
PART N°: CLEVIS: GENERAL	REV: 1
DRAWING N°: GEN CLEVIS	

© CAMLOC MOTION CONTROL LIMITED - THE DESIGN AND INFORMATION CONTAINED IN THIS DRAWING IS STRICTLY CONFIDENTIAL. IT IS THE EXCLUSIVE PROPERTY OF CAMLOC MOTION CONTROL LIMITED AND MUST NOT BE USED, COPIED OR REPRODUCED IN PART OR WHOLE WITHOUT WRITTEN PERMISSION FROM CAMLOC MOTION CONTROL LIMITED

DRAWING IS COMPUTER GENERATED. DO NOT HAND MODIFY.

IF IN DOUBT, ASK.

DRAWING UNCONTROLLED WHEN PRINTED PLEASE CHECK ORDER REVISION LEVEL BEFORE MANUFACTURE