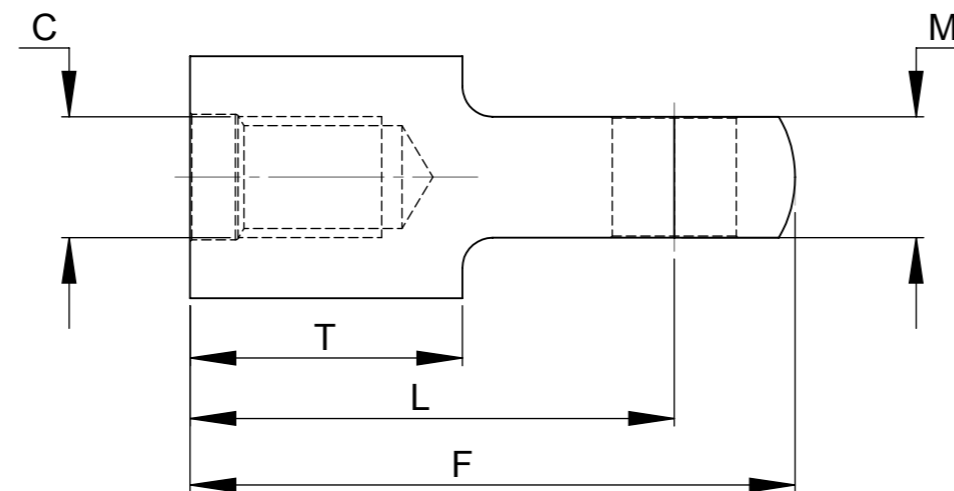
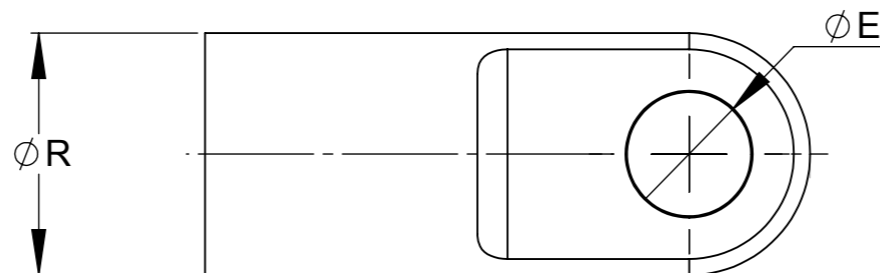


REV	DESCRIPTION
1	NEW CAD DRAWING

CODE	PART NO.	DIMENSIONS							MATERIAL	FINISH
		C	E	F	L	M	R	T		
F1	06-1890	M5x0.8	6.1	28.5	22.0	3.0	12.7	12.5	STEEL	PLATED
F2	08-1902	M6x1.0	8.1	31.5	25.0	5.0	12.7	14	STEEL	PLATED
F9	08-2371	M6x1.0	10.2	31.5	25.0	3.0	14.0	14	STEEL	PLATED
F4	10-1886	M8x1.25	8.2	40.0	32.0	8.0	16.0	18	STEEL	PLATED
TOLERANCES		6H	±0.12	±0.50	±0.25	±0.12	±0.25	±0.25		
FD	14-2459	M10x1.5	10.0	40.0	32.0	10.12	16.0	18	STEEL	PLATED
J1	08-4334	M6x1.0	8.0	31.5	25.0	5.12	12.7	14	STAINLESS 303	NATURAL
J2	10-4335	M8x1.25	8.0	40.0	32.0	8.12	16.0	18	STAINLESS 303	NATURAL
J3	14-4563	M10x1.5	10.0	40.0	32.0	10.12	16.0	18	STAINLESS 303	NATURAL
J4	14-4710	M10x1.5	8.0	40.0	32.0	8.12	16.0	18	STAINLESS 303	NATURAL
TOLERANCES		6H	+0.000/ +0.036 (H9)	±0.50	±0.25	±0.12	±0.25	±0.25		



CAMLOC MOTION CONTROL LTD
Manufacturers of Camloc Gas Springs
 15 New Star Road, Leicester, LE4 9JD, England
 Tel: +44 (0) 116 274 3600
 Email: info@camloc.com
 Website: www.camloc.com

DRAWING DATA	
DRAWN: GAH	PROJECT N°: EN1494P
DATE: 14.01.10	
SCALE: 2:1	

TITLE: GENERAL: FLAT EYE (SALES DWG)	
CUSTOMER: CMCL	
PART N°: GENERAL: FLAT EYE	REV: 1
DRAWING N°: GEN FLAT EYE	

© CAMLOC MOTION CONTROL LIMITED - THE DESIGN AND INFORMATION CONTAINED IN THIS DRAWING IS STRICTLY CONFIDENTIAL. IT IS THE EXCLUSIVE PROPERTY OF CAMLOC MOTION CONTROL LIMITED AND MUST NOT BE USED, COPIED OR REPRODUCED IN PART OR WHOLE WITHOUT WRITTEN PERMISSION FROM CAMLOC MOTION CONTROL LIMITED

DRAWING IS COMPUTER GENERATED. DO NOT HAND MODIFY.

IF IN DOUBT, ASK.

DRAWING UNCONTROLLED WHEN PRINTED PLEASE CHECK ORDER REVISION LEVEL BEFORE MANUFACTURE