

Rencol

COMPONENTS

INDUSTRIAL MANUFACTURING SINCE 1923



Rencol

COMPONENTS

INDUSTRIAL MANUFACTURING
SINCE 1923

Rencol's flexible manufacturing capabilities, engineering expertise, global supply chain and market knowledge allow us to develop cost-effective product solutions that exceed our customers' expectations.

Who we are

In the early twentieth century Rencol developed engineered plastic solutions ranging from electric car batteries and recharging stations to the plastic "Joylight" internal combustion engine.

By the 1970s our focus on components had emerged and the Rencol name became synonymous with high quality plastic knobs, handles and handwheels.

Today, we continue to grow, adapt and innovate:

- Our product range is extensive, industry-standard and growing.
- Our manufacturing partners are in key international locations, each chosen for their expertise, compatibility with our values and cost effectiveness.
- Our distribution network is worldwide and expanding.
- Our global supply chain has been in successful continuous operation for over a decade.

We are here to help

Exceptional customer service is central to our company philosophy. Our customer service team, on-site engineers, product designers and supply chain experts are here to advise and assist at all stages of the purchase and fulfilment process.

Call or email to:

- Check price and availability
- Make technical queries and request product advice
- Request samples
- Place and progress your order
- Request CAD drawings

Visit our website to:

- Request a quotation
- View product specifications and MOQs
- Find your local distributor
- Request CAD drawings
- Request a catalogue

Tel: +44 (0) 117 916 0090

Fax: +44 (0) 117 982 2235

Email: sales@rencol.com

Website: www.rencol.com

Office opening hours:

Monday to Friday

8.30 AM to 5.00 PM (GMT)



Nick Dowden, 30 years with Rencol.
Customer Service Manager

Index

Technical Specifications & Key

Material performance data, tolerances, colour options, quality certifications and product icon key.



Page 4

Model 01NPB TB Threaded Bush with Nickel Plated Brass Insert

Page 5-6

SS



Model 01 LF Free-standing Nylon Levelling Foot

Page 7-8



Model 01BD LF Bolt-down Nylon Levelling Foot

Page 9



Model 02 LF Free-standing Die Cast Zinc Levelling Foot

Page 10

HD



Model 02BD LF Bolt-down Die Cast Zinc Levelling Foot

Page 11

HD



Model 03 LF Free-standing Stainless Steel Levelling Foot

Page 12

SS HD



Model 03BD LF Bolt-down Stainless Steel Levelling Foot

Page 13

SS HD



Model 04 LF Rigid Adjustable Levelling Foot

Page 14



Model 05 LF Rigid Adjustable Levelling Foot with Hex Base

Page 15



Model 01 ASP TPE Rubber Anti Slip Plate

Page 16



Modifications & Custom Components

Custom colours, threads, materials, sizes, finishes, etc.

Page 19



Technical Specifications & Key

Thermoplastic

Material: Nylon 6 + Polypropylene (PP)
Working temperatures: Nylon up to 130°C peak and 80°C continuous use. Polypropylene maximum 70°C.
Resistant to: alcohols, esters, aromatic hydrocarbons, dilute alkalis, ketones, oils, fuels, grease, fats, weatherability (including UV light - excludes coloured Nylon) and salt water.
With PP also avoid halogenated hydrocarbons and flammable materials (can hold static charge).

Reinforced Thermoplastic

Material: Nylon 6 glass filled
Working temperature: up to 180°C peak, 110°C continuous use.
Resistant to: alcohols, esters, aromatic hydrocarbons, dilute alkalis, ketones, oils, fuels, grease, fats, weatherability (including UV light) and salt water.

Duroplast

Material: Phenolic Based Duroplast (PF)
Working temperature: -30°C to 160°C
Resistant to: diluted mineral acids, alcohols, chlorinated hydrocarbons, aromatic hydrocarbons, detergents, grease, oils, weatherability (including UV light). Avoid high pressure or high impact loads (can shatter).

Soft-Touch Mouldings

Material: Polypropylene substrate, TPE over-mould. Rencol has standard parts already available in this design, used particularly extensively in both industrial and special needs market products.

Brass

Material: BS2874 CZ121. Especially recommended for any materials likely to have continued exposure to temperatures below -30°C, where most steel grades become brittle. Also used as a marine grade material when nickel plated.

Zinc Plated Steel

Material: EN1A leaded-bright zinc passivated.

Stainless Steel

Material: Standard grade is 304. For medical, catering or marine use recommended grade is 316 - has high chloride resistance.

Aluminium

Grades are 6061 and A380. Others available on request.

Colours

Colour options include black, red, yellow, green, blue, white and grey. Other colours are available on request. If you would like to see the colours before ordering, samples can be provided free of charge.








Thread Depths

Wherever possible thread depths are a minimum of 1.5 x the diameter of the thread.

Tolerances

In general, our products are produced to the following tolerances:
Bore sizes: $\pm 0.1\text{mm}$ (0.004in)
Outside dimensions: $\pm 0.5\text{mm}$ (0.020in)
Male thread length: $\pm 1\text{mm}$ (0.040in)

Key

-  **Colour options** - RAL colours on request.
-  **Heavy duty** - Particularly hard wearing item.
-  **Stainless steel** - Partly or totally stainless steel.
-  **Fixing from above**
-  **Fixing from below**
-  **Multi component build** - Assembly available.
-  **Soft touch** - TPE over mould. Oil resistant.



Rencol Components is **ISO 9001:2008 Certified**
Our components are **REACH & RoHS Compliant**

SS +

Material

Glass reinforced nylon

Standard colour

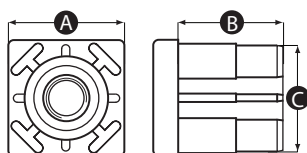
Black

Finish

Matt

Insert material

Nickel plated brass. Stainless steel available on request (MOQs apply)



Part No.	A	B	C	Thread size	To fit wall thickness
13222P	30	27	27.5	M8	1.5
13223W	30	27	27.5	M10	1.5
13224S	30	27	27.5	M12	1.5
13225Z	30	27	27.5	M14	1.5
13226V	30	27	27.5	M16	1.5
13227R	40	35	36.5	M8	2
13228Y	40	35	36.5	M10	2
13229U	40	35	36.5	M12	2
13230Q	40	35	36.5	M14	2
13231X	40	35	36.5	M16	2
13232T	40	35	36.5	M20	2
13233P	40	35	37.5	M8	1.5
13234W	40	35	37.5	M10	1.5
13235S	40	35	37.5	M12	1.5

Continued overleaf »

« Continued from facing page

Part No.	A	B	C	Thread size	To fit wall thickness
13236Z	40	35	37.5	M14	1.5
13237V	40	35	37.5	M16	1.5
13238R	40	35	37.5	M20	1.5
13239Y	50	44	45.5	M20	2.5
13240U	50	44	45.5	M24	2.5
13241Q	50	44	46.5	M16	2
13242X	50	44	46.5	M20	2
13243T	50	44	46.5	M24	2
13244P	50	44	47.5	M16	1.5
13245W	50	44	47.5	M20	1.5

Material

Glass reinforced nylon

Rod material

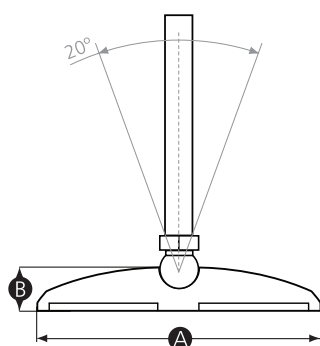
Zinc plated steel as standard. Stainless steel on request (MOQs apply).

Standard colour

Black. Other RAL colours available on request (MOQs apply).

Options

Many more base and rod size combinations available on request. Add a **Model 01 ASP** Anti Slip Plate to provide extra grip and anti-vibration.



Part No.	A	B	Thread size	Thread length (mm)	Max load (kg)
12769X	40	29	M8	25	350
12379V	40	29	M8	40	350
12746Q	50	29	M10	45	470
12384X	50	29	M10	70	470
12747X	50	29	M10	90	470
12382U	50	29	M8	40	350
12745U	50	29	M8	60	350
12383Q	50	29	M8	80	350
12748T	60	29	M10	45	470
12749P	60	29	M10	70	470
12750W	60	29	M10	125	470
12751S	60	29	M12	66	750
12752Z	60	29	M12	80	750
12389Z	60	29	M12	100	750

Continued overleaf »

« Continued from facing page

Part No.	A	B	Thread size	Thread length (mm)	Max load (kg)
12753V	60	29	M12	125	750
12390V	60	29	M12	150	750
12754R	80	29	M12	66	750
12394Q	80	29	M12	100	750
12756U	80	29	M16	66	900
12396T	80	29	M16	100	900
12397P	80	29	M16	150	900
12398W	80	31	M20	100	900
10314U	80	31	M20	150	900
12757Q	100	29	M16	66	900
12760P	100	29	M16	150	900
12765R	120	31	M20	150	900

Material

Glass reinforced nylon

Rod material

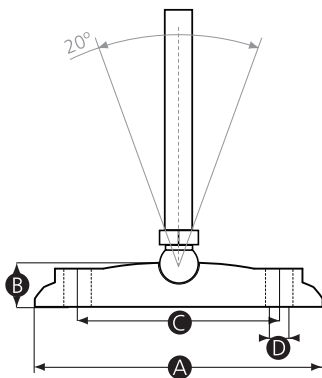
Zinc plated steel as standard. Stainless steel on request (MOQs apply).

Standard colour

Black. Other RAL colours available on request (MOQs apply).

Options

Many more base and rod size combinations available on request. Add a **Model 01 ASP** Anti Slip Plate to provide extra grip and anti-vibration.



Part No.	A	B	C	D	Thread size	Thread length (mm)	Max load (kg)
12771P	60	29	40	6	M10	70	470
12772W	60	29	40	6	M10	125	470
12770T	60	29	40	6	M8	80	350
12419P	80	29	54	9	M12	100	750
12420W	80	29	54	9	M12	150	750
12773S	80	29	54	9	M16	100	900
12421S	80	29	54	9	M16	150	900
12775V	100	29	74	9	M16	100	900

HD

Material

Die cast zinc

Rod material

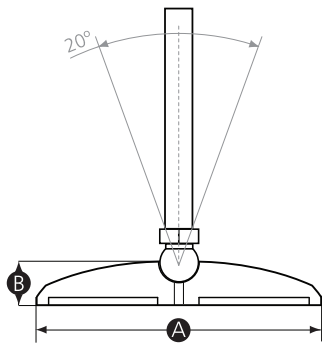
Zinc plated steel as standard. Stainless steel on request (MOQs apply).

Standard colour

Black

Options

Many more base and rod size combinations available on request. Add a **Model 01 ASP** Anti Slip Plate to provide extra grip and anti-vibration.



Part No.	A	B	Thread size	Thread length (mm)	Max load (kg)
15654P	30	26	M8	45	350
15653T	30	26	M10	45	470
15655W	40	26	M8	45	350
15656S	40	26	M10	45	470
15657Z	50	26	M10	90	470
15658V	50	26	M12	150	750
15659R	60	26	M12	100	750
15660Y	60	26	M12	150	750
15661U	80	26	M12	150	750
15662Q	80	26	M16	100	1400
15663X	100	26	M16	100	1400
145664T	100	29	M20	150	2400
15665P	120	29	M20	150	2400
15666W	120	29	M24	100	3500

HD

Material

Die cast zinc

Rod material

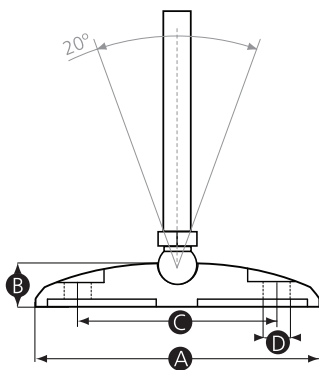
Zinc plated steel as standard. Stainless steel on request (MOQs apply).

Standard colour

Black

Options

Many more base and rod size combinations available on request. Add a **Model 01 ASP** Anti Slip Plate to provide extra grip and anti-vibration.



Part No.	A	B	C	D	Thread size	Thread length (mm)	Max load (kg)
15667S	60	26	40	9	M12	100	750
15668Z	60	26	40	9	M12	150	750
15669V	80	26	55	9	M12	150	750
15670R	80	26	55	9	M16	100	1400
15671Y	100	26	74	9	M16	100	1400
15672U	100	29	74	9	M20	150	2400
15673Q	120	29	94	9	M20	150	2400
15674X	120	29	94	9	M24	100	3500

SS HD

Material

Stainless steel 303

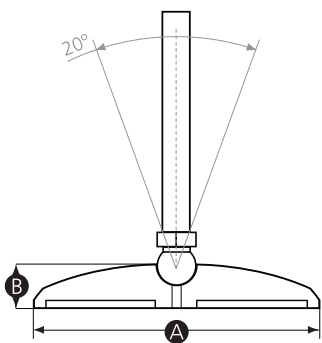
Rod material

Stainless steel 304

Options

Many more base and rod size combinations available on request.

Add a **Model 01 ASP** Anti Slip Plate to provide extra grip and anti-vibration.



Part No.	A	B	Thread size	Thread length (mm)	Max load (kg)
15676P	30	26	M8	45	350
15675T	30	26	M10	45	470
15677W	40	26	M8	45	350
15678S	40	26	M10	45	470
1679Z	50	26	M10	90	470
15680V	50	26	M12	150	750
15681R	60	26	M12	100	750
15682Y	60	26	M12	150	750
15683U	80	26	M12	150	750
15684Q	80	26	M16	100	1400
15685X	100	26	M16	100	1400
15686T	100	29	M20	150	2400
15687P	120	29	M20	150	2400
15688W	120	29	M24	100	3500

SS HD

Material

Stainless steel 303

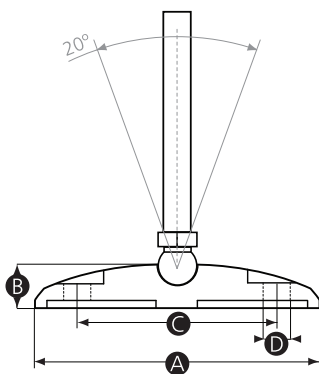
Rod material

Stainless steel 304

Options

Many more base and rod size combinations available on request.

Add a **Model 01 ASP** Anti Slip Plate to provide extra grip and anti-vibration.



Part No.	A	B	C	D	Thread size	Thread length (mm)	Max load (kg)
15689S	60	26	40	9	M12	100	750
15690Z	60	26	40	9	M12	150	750
15691V	80	26	55	9	M12	150	750
15692R	80	26	55	9	M16	100	1400
15693Y	100	26	74	9	M16	100	1400
15694U	100	29	74	9	M20	150	2400
15695Q	120	29	94	9	M20	150	2400
12696X	120	29	94	9	M24	100	3500

Material

Polypropylene

Standard colour

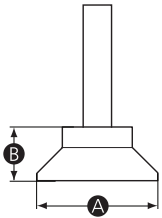
Black

Finish

Matt

Thread material

Zinc plated steel



Part No.	A	B	Thread size	Thread length (mm)
15145Q	25	13.5	M8	15
15146X	25	13.5	M8	24
15148P	38	16	M8	24
15149W	38	16	M8	38

Material

Polypropylene

Standard colour

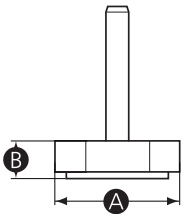
Black

Finish

Matt

Thread material

Zinc plated steel



Part No.	A	B	Thread size	Thread length (mm)
15147T	34	12	M8	38



Material

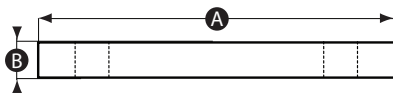
TPE Rubber

Properties

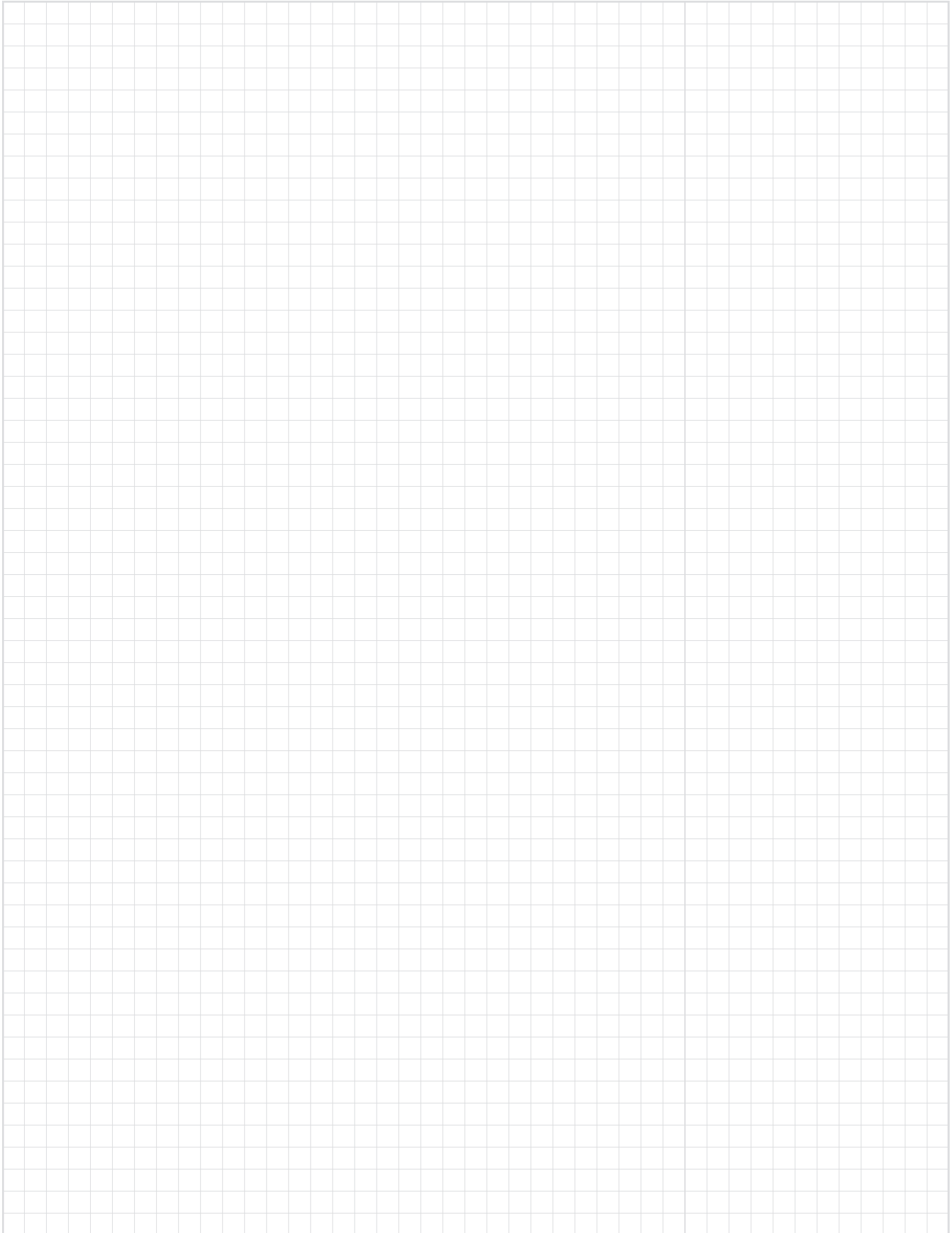
Anti-slip and anti vibration. Water and oil resistant.

Type

With or without bolt down holes.



Part No.	A	B	With holes	Use with
8078V	30	7	No	Plastic Bases
8077Z	40	7	No	Plastic Bases
8076S	45	7	No	Plastic Bases
8075W	50	7	No	Plastic Bases
8074P	60	7	No	Plastic Bases
8073T	80	7	No	Plastic Bases
11361X	100	7	No	Plastic Bases
11362T	120	7	No	Plastic Bases
11360Q	60	7	Yes	Plastic Bases
8072X	80	7	Yes	Plastic Bases
8071Q	100	7	Yes	Plastic Bases
8070U	120	7	Yes	Plastic Bases
12894S	30	7	No	Metal Bases
12897R	60	7	No	Metal Bases
12898Y	80	7	No	Metal Bases
12900Q	100	7	Yes	Metal Bases
12901X	120	7	Yes	Metal Bases



A large grid of graph paper for taking notes, consisting of 20 columns and 40 rows of small squares.

Modifications & Custom Components

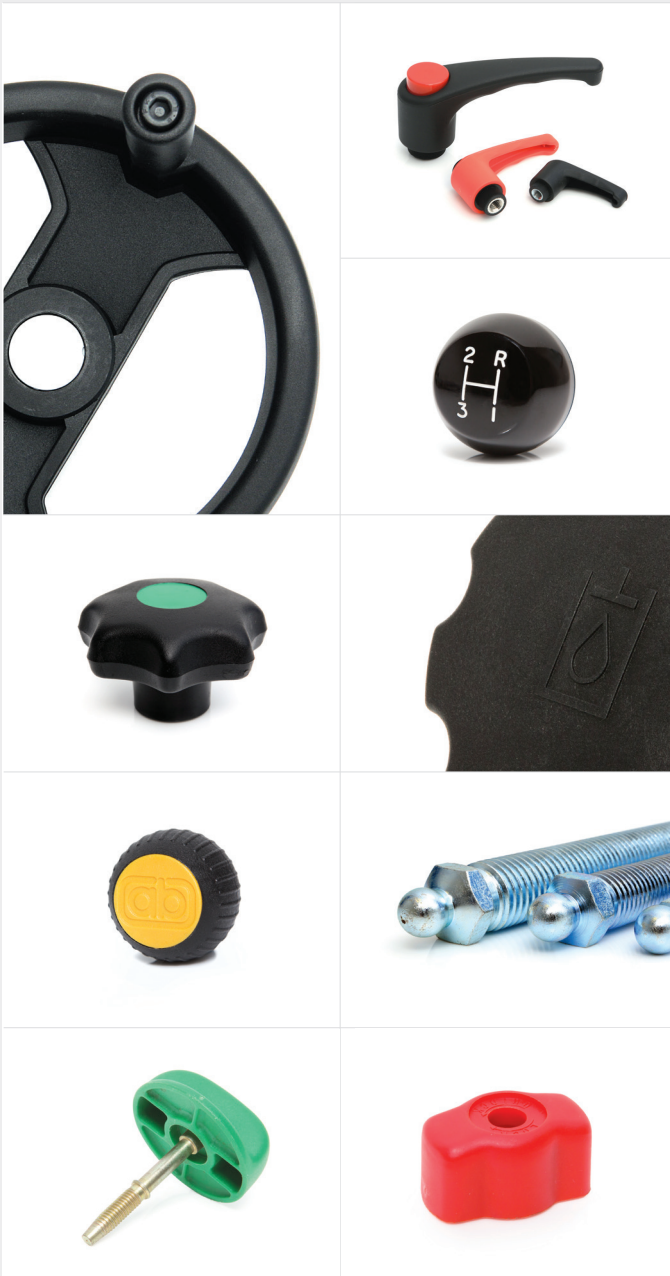
Diverse manufacturing capabilities and experienced on-site technical personnel allows Rencol Components to offer a wide range of product modifications and custom product solutions. We regularly adapt standard components or manufacture custom products to suit our customers' specific requirements. New tooling can be produced quickly and cost effectively with a typical MOQ of just 500 pieces.

Manufacturing Processes

Plastic & Metal Injection Moulding / Die casting / Machining / Forging / Stamping / Rapid Prototyping / 3D Printing

Modifications & Custom Options

Thread size & length / RAL Colours / Engraving / Pad-Printing & Screen-Printing / TPE Over mould / Materials / Finishes / Logos





Rencol COMPONENTS

Head Office (UK):

Unit 2 Avonbridge Trading Estate
Atlantic Road
Avonmouth
Bristol BS11 9QD
United Kingdom

Tel: +44 (0) 117 916 0090

Fax: +44 (0) 117 982 2235

Email: sales@rencol.com

Website: www.rencol.com

Office opening hours:

Monday to Friday
8.30 AM to 5.00 PM (GMT)