

Rencol

COMPONENTS

INDUSTRIAL MANUFACTURING SINCE 1923



Rencol

COMPONENTS

INDUSTRIAL MANUFACTURING
SINCE 1923

Rencol's flexible manufacturing capabilities, engineering expertise, global supply chain and market knowledge allow us to develop cost-effective product solutions that exceed our customers' expectations.

Who we are

In the early twentieth century Rencol developed engineered plastic solutions ranging from electric car batteries and recharging stations to the plastic "Joylight" internal combustion engine.

By the 1970s our focus on components had emerged and the Rencol name became synonymous with high quality plastic knobs, handles and handwheels.

Today, we continue to grow, adapt and innovate:

- Our product range is extensive, industry-standard and growing.
- Our manufacturing partners are in key international locations, each chosen for their expertise, compatibility with our values and cost effectiveness.
- Our distribution network is worldwide and expanding.
- Our global supply chain has been in successful continuous operation for over a decade.

We are here to help

Exceptional customer service is central to our company philosophy. Our customer service team, on-site engineers, product designers and supply chain experts are here to advise and assist at all stages of the purchase and fulfilment process.

Call or email to:

- Check price and availability
- Make technical queries and request product advice
- Request samples
- Place and progress your order
- Request CAD drawings

Visit our website to:

- Request a quotation
- View product specifications and MOQs
- Find your local distributor
- Request CAD drawings
- Request a catalogue

Tel: +44 (0) 117 916 0090

Fax: +44 (0) 117 982 2235

Email: sales@rencol.com

Website: www.rencol.com

Office opening hours:

Monday to Friday

8.30 AM to 5.00 PM (GMT)



Nick Dowden, 30 years with Rencol.
Customer Service Manager

Index

Technical Specifications & Key

Material performance data, tolerances, colour options, quality certifications and product icon key.



Page 4

Model 01 HW Solid Control Handwheel

Page 6



Model 01H HW Solid Control Handwheel with Handle

Page 7



Model 01FH HW Solid Control Handwheel with Folding Handle

Page 8



Model 01FFH HW Solid Control Handwheel with Flush Folding Handle

Page 9



Model 02 HW Spoked Control Handwheel

Page 10



Model 02H HW Spoked Control Handwheel with Handle

Page 11



Model 02FH HW Spoked Control Handwheel with Folding Handle

Page 12



Model 02FFH HW Spoked Control Handwheel with Flush Folding Handle

Page 13



Model 03S HW Spoked Steel Control Handwheel

Page 14



Model 03SS HW Spoked Stainless Steel Control Handwheel

Page 15



Model 04 HW Spoked Aluminium Control Handwheel

Page 16



Model 06 CR Cast Iron Cranking Handle

Page 17



Model 07 CR Thermoplastic Cranking Handle

Page 18



Model 08 CR
Thermoplastic Index
Cranking Handle with
Folding Side Handle

Page 19



Model 09 CR
Thermoplastic Cranking
Handle with Folding Side
Handle

Page 20



Modifications & Custom
Components

Custom colours, threads,
materials, sizes, finishes, etc.

Page 23



Technical Specifications & Key

Thermoplastic

Material: Nylon 6 + Polypropylene (PP)
Working temperatures: Nylon up to 130°C peak and 80°C continuous use. Polypropylene maximum 70°C.
Resistant to: alcohols, esters, aromatic hydrocarbons, dilute alkalis, ketones, oils, fuels, grease, fats, weatherability (including UV light - excludes coloured Nylon) and salt water.
With PP also avoid halogenated hydrocarbons and flammable materials (can hold static charge).

Reinforced Thermoplastic

Material: Nylon 6 glass filled
Working temperature: up to 180°C peak, 110°C continuous use.
Resistant to: alcohols, esters, aromatic hydrocarbons, dilute alkalis, ketones, oils, fuels, grease, fats, weatherability (including UV light) and salt water.

Duroplast

Material: Phenolic Based Duroplast (PF)
Working temperature: -30°C to 160°C
Resistant to: diluted mineral acids, alcohols, chlorinated hydrocarbons, aromatic hydrocarbons, detergents, grease, oils, weatherability (including UV light). Avoid high pressure or high impact loads (can shatter).

Soft-Touch Mouldings

Material: Polypropylene substrate, TPE over-mould. Rencol has standard parts already available in this design, used particularly extensively in both industrial and special needs market products.

Brass

Material: BS2874 CZ121. Especially recommended for any materials likely to have continued exposure to temperatures below -30°C, where most steel grades become brittle. Also used as a marine grade material when nickel plated.

Zinc Plated Steel

Material: EN1A leaded-bright zinc passivated.

Stainless Steel

Material: Standard grade is 304. For medical, catering or marine use recommended grade is 316 - has high chloride resistance.

Aluminium

Grades are 6061 and A380. Others available on request.

Colours

Colour options include black, red, yellow, green, blue, white and grey. Other colours are available on request. If you would like to see the colours before ordering, samples can be provided free of charge.

Thread Depths

Wherever possible thread depths are a minimum of 1.5 x the diameter of the thread.

Tolerances








In general, our products are produced to the following tolerances:

Bore sizes: ± 0.1 mm (0.004in)

Outside dimensions: ± 0.5 mm (0.020in)

Male thread length: ± 1 mm (0.040in)

Key

-  **Colour options** - RAL colours on request.
-  **Heavy duty** - Particularly hard wearing item.
-  **Stainless steel** - Partly or totally stainless steel.
-  **Fixing from above**
-  **Fixing from below**
-  **Multi component build** - Assembly available.
-  **Soft touch** - TPE over mould. Oil resistant.



Rencol Components is **ISO 9001:2008 Certified**
Our components are **REACH & RoHS Compliant**

Material

High impact resistant thermoplastic

Standard colour

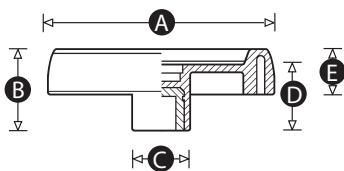
Black

Finish

Matt

Insert material

Zinc plated steel



Part No.	A	B	C	D	E	Pilot bore (mm)	Maximum bore (mm)
5443T	100	39	30	34	21	8	16
5444W	125	44	36	37	24	8	16
5445P	150	53	38	43	29	8	20
5446R	175	56	40	46	32	8	20
5447U	200	59	44	49	35	8	20

Material

High impact resistant thermoplastic

Standard colour

Black

Finish

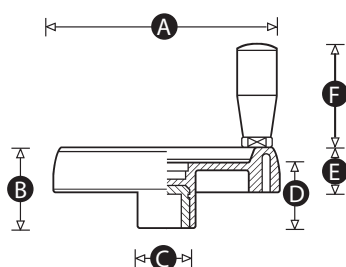
Matt

Insert material

Zinc plated steel

Handle

Revolving fixed (non-folding) handle



Part No.	A	B	C	D	E	F	Pilot bore (mm)	Maximum bore (mm)
5448X	100	39	30	34	21	55	8	16
5449P	125	44	36	37	24	66	8	16
5450V	150	53	38	43	29	76	8	20
5451Y	175	56	40	46	32	86	8	20
5452Q	200	59	44	49	35	86	8	20

Material

High impact resistant thermoplastic

Standard colour

Black

Finish

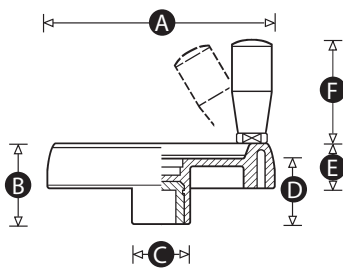
Matt

Insert material

Zinc plated steel

Handle

Revolving folding handle



Part No.	A	B	C	D	E	F	Pilot bore (mm)	Maximum bore (mm)
5453T	100	39	30	34	21	55	8	16
5454W	125	44	36	37	24	76	8	16
5455P	150	53	38	43	29	90	8	20
5456R	175	56	40	46	32	98	8	20
5457U	200	59	44	49	35	98	8	20

Material

High impact resistant thermoplastic

Standard colour

Black

Finish

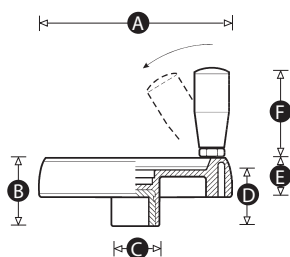
Matt

Insert material

Zinc plated steel

Handle

Revolving folding handle. Recessed area to allow handle to be folded flush to the wheel.



Part No.	A	B	C	D	E	F	Pilot bore (mm)	Maximum bore (mm)
13213S	80	35	25	31	18	38	8	20
13214Z	100	44	30	37	24	48	8	20
13215V	124	50	36	40	27	58	8	20
6691Z	150	53	38	43	32	60	8	22
6660R	175	57	40	47	35	70	8	28
6661Y	200	60	44	50	38	80	8	28

Material

High impact resistant thermoplastic

Standard colour

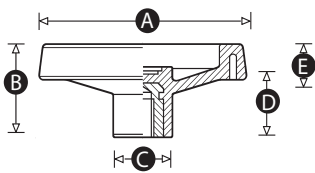
Black

Finish

Matt

Insert material

Zinc plated steel



Part No.	A	B	C	D	E	F	Pilot bore (mm)	Maximum bore (mm)
5264U	100	44	28	33	16	56	8	16
5270T	130	49	31	35	20	66	8	16
5271W	160	56	40	40	24	76	8	20
5272P	200	61	50	40	28	76	8	20
5273R	250	70	56	44	32	92	8	20

Material

High impact resistant thermoplastic

Standard colour

Black

Finish

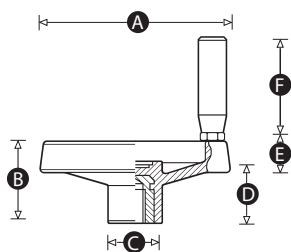
Matt

Insert material

Zinc plated steel

Handle

Revolving fixed (non-folding) handle



Part No.	A	B	C	D	E	Pilot bore (mm)	Maximum bore (mm)
5265X	100	44	28	33	16	8	16
5266P	130	49	31	35	20	8	16
5267S	160	56	40	40	24	8	20
5268V	200	61	50	40	28	8	20
5269Y	250	70	56	44	32	8	20

Material

High impact resistant thermoplastic

Standard colour

Black

Finish

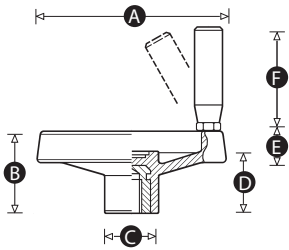
Matt

Insert material

Zinc plated steel

Handle

Revolving folding handle



Part No.	A	B	C	D	E	F	Pilot bore (mm)	Maximum bore (mm)
5274U	130	49	31	35	20	76	8	16
5275X	160	56	40	40	24	76	8	20
5276P	200	61	50	40	28	76	8	20
5277S	250	70	56	44	32	96	8	20

Material

High impact resistant thermoplastic

Standard colour

Black

Finish

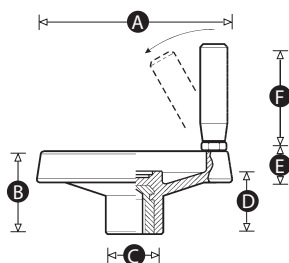
Matt

Insert material

Zinc plated steel

Handle

Revolving folding handle. Recessed area allows handle to be folded flush to the wheel.



Part No.	A	B	C	D	E	F	Pilot bore (mm)	Maximum bore (mm)
6714V	130	53	31	35	23	60	8	16
7788P	160	59	40	40	26	70	8	20

HD

Material

Pressed steel

Finish

Matt

Standard colour

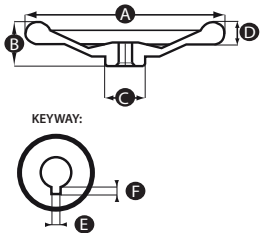
Black

Insert/hub

Steel central hub with machined bore and keyway.

Options

Special bore sizes available (MOQs apply).



Part No.	A	B	C	D	E	F	Pilot bore (mm)	Number of spokes
11840V	125	29	30	18	4	2	11	3
11841R	160	37	30	22	4	2.3	12	4
11842Y	200	46	40	22	5	2.4	14	4
11843U	250	52	45	30	5	2.5	17	5

SS HD

Material

Pressed stainless steel

Finish

Matt

Standard colour

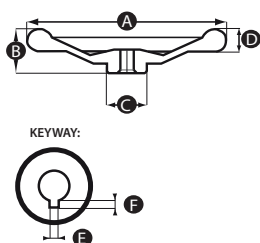
Natural

Insert/hub

Stainless steel central hub with machined bore and keyway.

Options

Special bore sizes available (MOQs apply).



Part No.	A	B	C	D	E	F	Bore diameter (mm)	Number of spokes
11837W	160	37	30	22	4	2.3	12	4
11838S	200	46	40	22	5	2.4	14	4
11839Z	250	52	45	30	5	2.5	17	5

Material

Die cast aluminium

Finish

Machine polished outer rim and matt finish inner spokes and hub.

Insert/hub

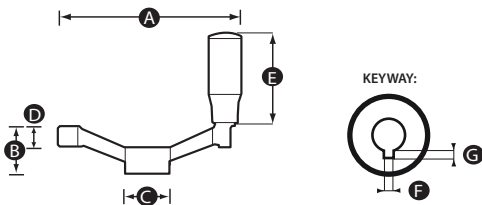
Integral die cast aluminium central hub with machined bore and keyway.

Handle

Gloss finish duroplast

Options

Special bore sizes / keyways / side holes. RAL colour side handle (MOQs apply).



Part No.	A	B	C	D	E	F	G	Bore diameter (mm)
11813T	125	33	31	15	62	4	2	12
11816S	140	36	36	17	62	5	2.2	14
11814P	160	39	36	18	92	5	2.2	14
11815W	200	45	42	21	92	6	2.5	18

Material

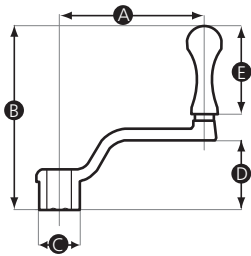
Cast iron crank with polished steel side handle

Standard colour

Cast finish and polished steel

Fixing

Square fixing hole



Part No.	A	B	C	D	E	Bore size (mm)
11797R	100	133	28	75	46	12mm SQU
11798Y	125	141	34	75	46	14mm SQU
11799U	160	171	38	95	46	17mm SQU
11800Q	200	191	44	95	46	19mm SQU

Material

High impact resistant thermoplastic

Standard colour

Black

Finish

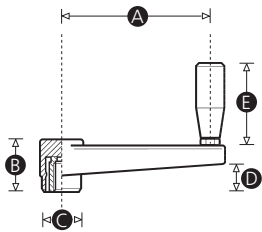
Matt

Female insert material

Brass

Handle

Non-folding revolving side handle



Part No.	A	B	C	D	E	Thread size
6709T	65	30	22	17	52	M8
7611T	65	30	22	17	52	M10
7610X	65	30	22	17	52	M12
6710P	80	33	26	19	52	M8
6741X	80	33	26	19	52	M10
7609Q	80	33	26	19	52	M12
6711W	110	39	26	25	62	M10
7612P	110	39	29	25	62	M12
9446Q	110	39	26	25	62	M14
6712S	140	49	35	33	72	M12
9447X	140	49	35	33	72	M14
7608U	140	49	35	33	72	M16
6713Z	185	55	40	40	82	M12
9850R	185	55	40	40	82	M14
7607Y	185	55	40	40	82	M16

Material

High impact resistant thermoplastic

Standard colour

Black

Finish

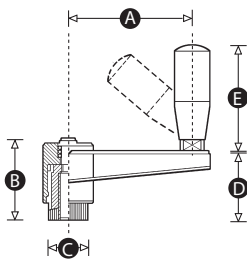
Matt

Female insert material

Brass

Side handle

Folding and revolving side handle



Part No.	A	B	C	D	E	Thread size
5459P	65	45	27	36	52	M8
5460V	65	45	27	36	52	M10
5461Y	65	45	27	36	52	M12
5464W	80	52	34	46	52	M10
5462Q	80	52	34	46	52	M12
5463T	80	52	34	46	52	M14
5465P	110	52	34	47	62	M12
5466R	110	52	34	47	62	M14
5467U	110	52	34	47	62	M16

Material

High impact resistant thermoplastic

Standard colour

Black

Finish

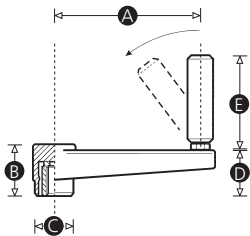
Matt

Female insert material

Brass

Side handle

Folding and revolving side handle



Part No.	A	B	C	D	E	Thread size
6705Y	65	31	26	32	52	M8
6715R	65	31	26	32	52	M10
6716Y	65	31	26	32	52	M12
6706U	80	33	30	33	52	M8
6742T	80	33	30	33	52	M10
11127Y	80	33	30	33	52	M12
6702Z	110	39	33	39	62	M10
9440S	110	39	33	39	62	M12
9441Z	110	39	33	39	62	M14
6707Q	140	49	42	50	72	M12
9442V	140	49	42	50	72	M14
9443R	140	49	42	50	72	M16
6708X	185	54	46	58	82	M12
9444Y	185	54	46	58	82	M14
9341S	185	54	46	58	82	M16

A large grid area for taking notes, consisting of many small squares. The grid is approximately 30 columns wide and 60 rows high, providing a structured space for writing or drawing.

Modifications & Custom Components

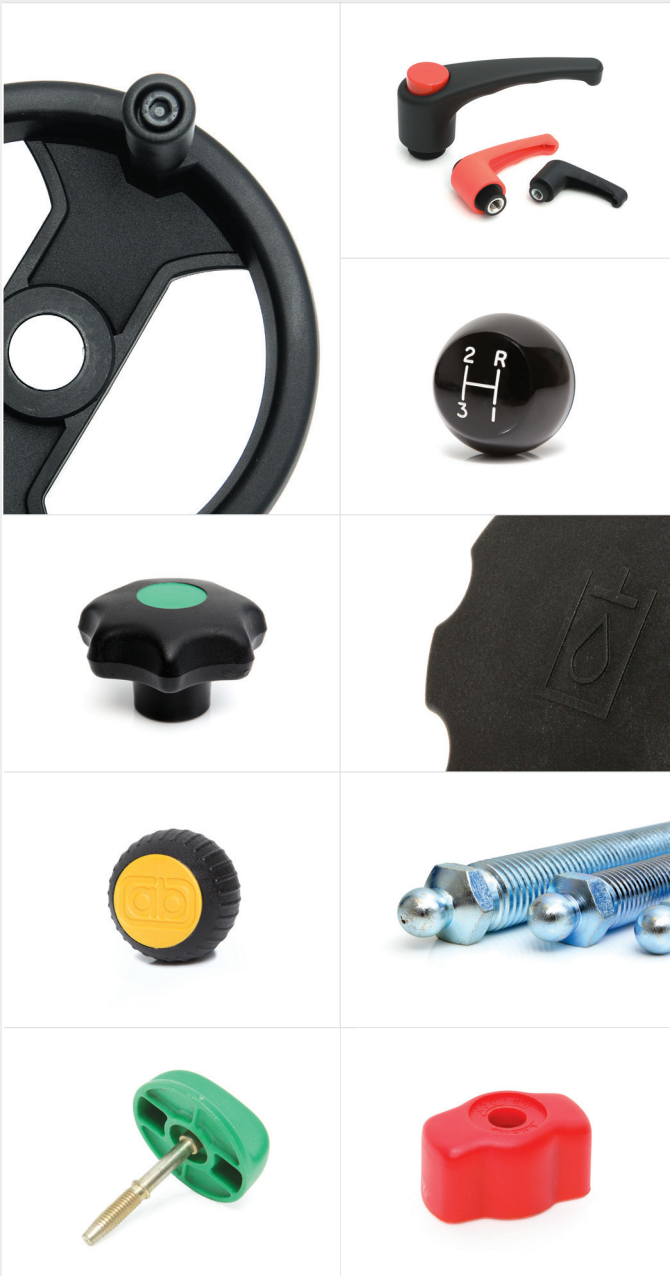
Diverse manufacturing capabilities and experienced on-site technical personnel allows Rencol Components to offer a wide range of product modifications and custom product solutions. We regularly adapt standard components or manufacture custom products to suit our customers' specific requirements. New tooling can be produced quickly and cost effectively with a typical MOQ of just 500 pieces.

Manufacturing Processes

Plastic & Metal Injection Moulding / Die casting / Machining / Forging / Stamping / Rapid Prototyping / 3D Printing

Modifications & Custom Options

Thread size & length / RAL Colours / Engraving / Pad-Printing & Screen-Printing / TPE Over mould / Materials / Finishes / Logos





Rencol COMPONENTS

Head Office (UK):

Unit 2 Avonbridge Trading Estate
Atlantic Road
Avonmouth
Bristol BS11 9QD
United Kingdom

Tel: +44 (0) 117 916 0090

Fax: +44 (0) 117 982 2235

Email: sales@rencol.com

Website: www.rencol.com

Office opening hours:

Monday to Friday
8.30 AM to 5.00 PM (GMT)