

# Rencol

COMPONENTS

INDUSTRIAL MANUFACTURING SINCE 1923



# Rencol

## COMPONENTS

INDUSTRIAL MANUFACTURING  
SINCE 1923

*Rencol's flexible manufacturing capabilities, engineering expertise, global supply chain and market knowledge allow us to develop cost-effective product solutions that exceed our customers' expectations.*

## Who we are

In the early twentieth century Rencol developed engineered plastic solutions ranging from electric car batteries and recharging stations to the plastic "Joylight" internal combustion engine.

By the 1970s our focus on components had emerged and the Rencol name became synonymous with high quality plastic knobs, handles and handwheels.

### Today, we continue to grow, adapt and innovate:

- Our product range is extensive, industry-standard and growing.
- Our manufacturing partners are in key international locations, each chosen for their expertise, compatibility with our values and cost effectiveness.
- Our distribution network is worldwide and expanding.
- Our global supply chain has been in successful continuous operation for over a decade.

## We are here to help

Exceptional customer service is central to our company philosophy. Our customer service team, on-site engineers, product designers and supply chain experts are here to advise and assist at all stages of the purchase and fulfilment process.

### Call or email to:

- Check price and availability
- Make technical queries and request product advice
- Request samples
- Place and progress your order
- Request CAD drawings

### Visit our website to:

- Request a quotation
- View product specifications and MOQs
- Find your local distributor
- Request CAD drawings
- Request a catalogue

**Tel:** +44 (0) 117 916 0090

**Fax:** +44 (0) 117 982 2235

**Email:** [sales@rencol.com](mailto:sales@rencol.com)

**Website:** [www.rencol.com](http://www.rencol.com)

### Office opening hours:

Monday to Friday

8.30 AM to 5.00 PM (GMT)



*Nick Dowden, 30 years with Rencol.  
Customer Service Manager*

# Index

## Technical Specifications & Key

Material performance data, tolerances, colour options, quality certifications and product icon key.



Page 4

## Model 01 HI Plastic Hinge

Page 5



## Model 02 HI Plastic Hinge

Page 6



## Model 03 HI Plastic Hinge

Page 7



## Model 04 HI Polished Metal Hinge

Page 8



## Model 05 HI Polished Metal Hinge

Page 9



## Modifications & Custom Components

Custom colours, threads, materials, sizes, finishes, etc.

Page 11



# Technical Specifications & Key

## Thermoplastic

Material: Nylon 6 + Polypropylene (PP)  
Working temperatures: Nylon up to 130°C peak and 80°C continuous use. Polypropylene maximum 70°C.  
Resistant to: alcohols, esters, aromatic hydrocarbons, dilute alkalis, ketones, oils, fuels, grease, fats, weatherability (including UV light - excludes coloured Nylon) and salt water.  
With PP also avoid halogenated hydrocarbons and flammable materials (can hold static charge).

## Reinforced Thermoplastic

Material: Nylon 6 glass filled  
Working temperature: up to 180°C peak, 110°C continuous use.  
Resistant to: alcohols, esters, aromatic hydrocarbons, dilute alkalis, ketones, oils, fuels, grease, fats, weatherability (including UV light) and salt water.

## Duroplast

Material: Phenolic Based Duroplast (PF)  
Working temperature: -30°C to 160°C  
Resistant to: diluted mineral acids, alcohols, chlorinated hydrocarbons, aromatic hydrocarbons, detergents, grease, oils, weatherability (including UV light). Avoid high pressure or high impact loads (can shatter).

## Soft-Touch Mouldings

Material: Polypropylene substrate, TPE over-mould. Rencol has standard parts already available in this design, used particularly extensively in both industrial and special needs market products.

## Brass

Material: BS2874 CZ121. Especially recommended for any materials likely to have continued exposure to temperatures below -30°C, where most steel grades become brittle. Also used as a marine grade material when nickel plated.

## Zinc Plated Steel

Material: EN1A leaded-bright zinc passivated.

## Stainless Steel

Material: Standard grade is 304. For medical, catering or marine use recommended grade is 316 - has high chloride resistance.

## Aluminium

Grades are 6061 and A380. Others available on request.

## Colours

Colour options include black, red, yellow, green, blue, white and grey. Other colours are available on request. If you would like to see the colours before ordering, samples can be provided free of charge.








## Thread Depths

Wherever possible thread depths are a minimum of 1.5 x the diameter of the thread.

## Tolerances

In general, our products are produced to the following tolerances:  
Bore sizes:  $\pm 0.1\text{mm}$  (0.004in)  
Outside dimensions:  $\pm 0.5\text{mm}$  (0.020in)  
Male thread length:  $\pm 1\text{mm}$  (0.040in)

## Key

-  **Colour options** - RAL colours on request.
-  **Heavy duty** - Particularly hard wearing item.
-  **Stainless steel** - Partly or totally stainless steel.
-  **Fixing from above**
-  **Fixing from below**
-  **Multi component build** - Assembly available.
-  **Soft touch** - TPE over mould. Oil resistant.



Rencol Components is **ISO 9001:2008 Certified**  
Our components are **REACH & RoHS Compliant**



**Material**

Acetal polymer (POM) with zinc plated steel countersunk screw.

**Pin material**

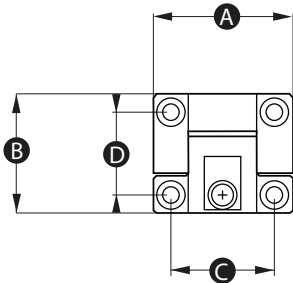
Polycarbonate

**Colour**

Black or white. Other RAL colours available (MOQs apply).

**Function**

The friction of this hinge can be adjusted by tightening or loosening the screw, giving you full flexibility and ease of use.



Part No.	A	B	C	D	Hole size (mm)	Colour
12824X	43	36.5	32	25	5.2	Black
10896Y	43	36.5	32	25	5.2	White
15058X	65	65	48	48	5.5	Black
15282S	65	65	48	48	5.5	White



**Material**

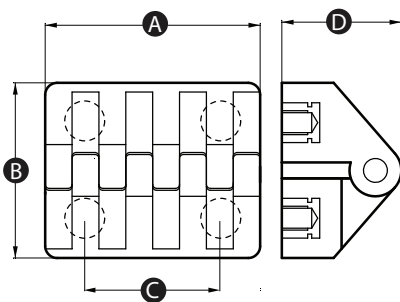
High impact resistant thermoplastic

**Colour**

Black. Other RAL colours available (MOQs apply).

**Thread material**

Brass



Part No.	A	B	C	D	Thread size
14277X	30	35	25	25	M5
14278T	54	44	30	29	M6

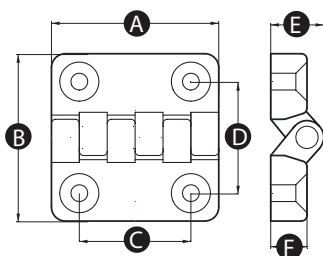


**Material**

High impact resistant thermoplastic

**Colour**

Black. Other RAL colours available (MOQs apply).



Part No.	A	B	C	D	E	F	Bore size (mm)
14279P	48	48	30	30	15.5	10.5	7
14280W	64	64	40	40	19	13	7

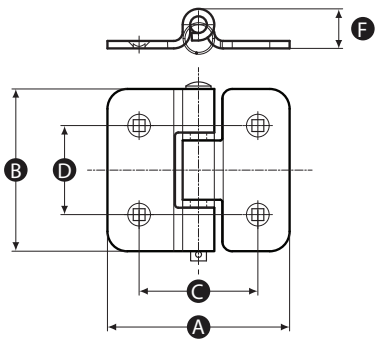


**Material**

Stainless steel 304

**Finish**

Electrolytic polish



Part No.	A	B	C	D	E	F	Square bore (mm)
15431Q	92	82	60	45	-	20	6



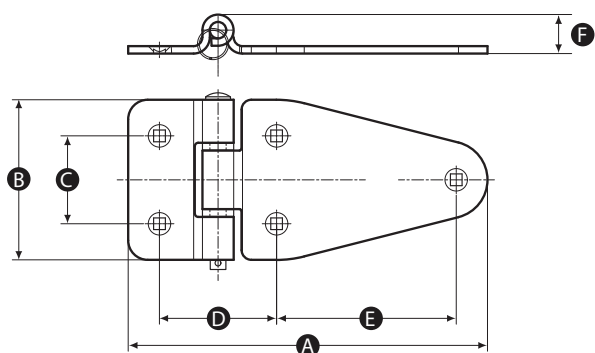


**Material**

Stainless steel 304

**Finish**

Electrolytic polish



Part No.	A	B	C	D	E	F	Square bore (mm)
15432X	184	82	45	60	92	20	6

A large grid of graph paper for taking notes, consisting of approximately 30 columns and 40 rows of small squares.

## Modifications & Custom Components

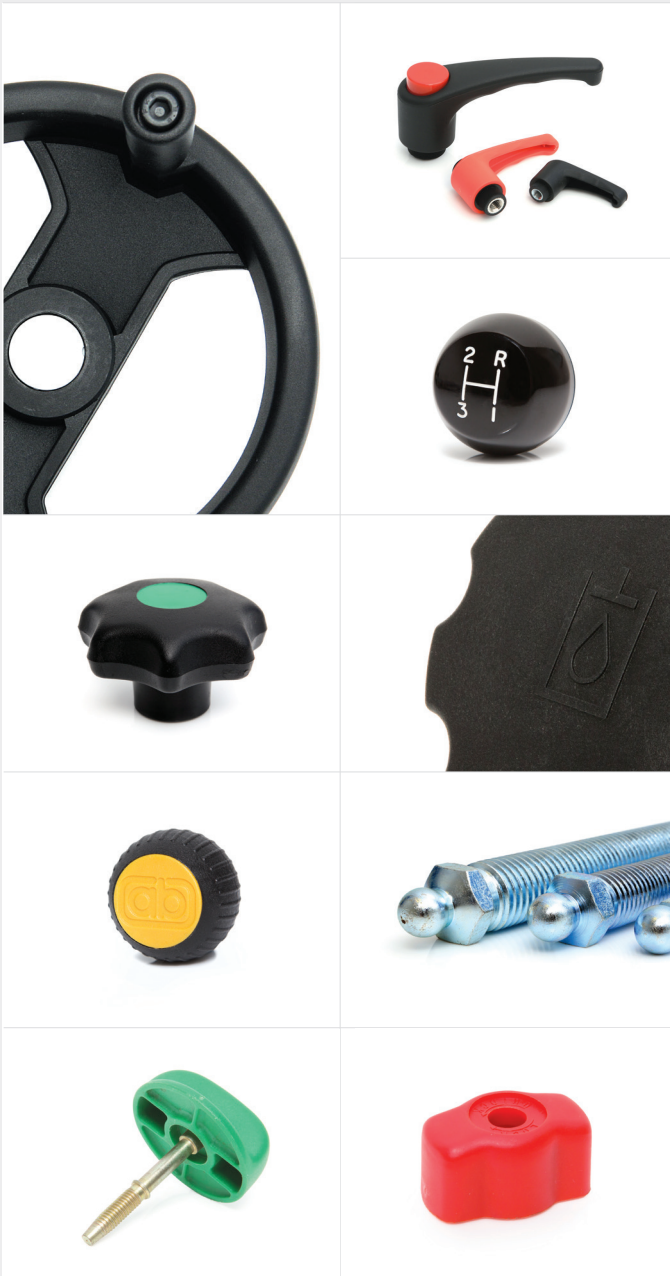
Diverse manufacturing capabilities and experienced on-site technical personnel allows Rencol Components to offer a wide range of product modifications and custom product solutions. We regularly adapt standard components or manufacture custom products to suit our customers' specific requirements. New tooling can be produced quickly and cost effectively with a typical MOQ of just 500 pieces.

### Manufacturing Processes

Plastic & Metal Injection Moulding / Die casting / Machining / Forging / Stamping / Rapid Prototyping / 3D Printing

### Modifications & Custom Options

Thread size & length / RAL Colours / Engraving / Pad-Printing & Screen-Printing / TPE Over mould / Materials / Finishes / Logos





## **Rencol** COMPONENTS

**UK Head Office:**

Unit 2 Avonbridge Trading Estate  
Atlantic Road  
Avonmouth  
Bristol BS11 9QD  
United Kingdom

**Tel:** +44 (0) 117 916 0090

**Fax:** +44 (0) 117 982 2235

**Email:** [sales@rencol.com](mailto:sales@rencol.com)

**Website:** [www.rencol.com](http://www.rencol.com)

**Office opening hours:**

Monday to Friday  
8.30 AM to 5.00 PM (GMT)