

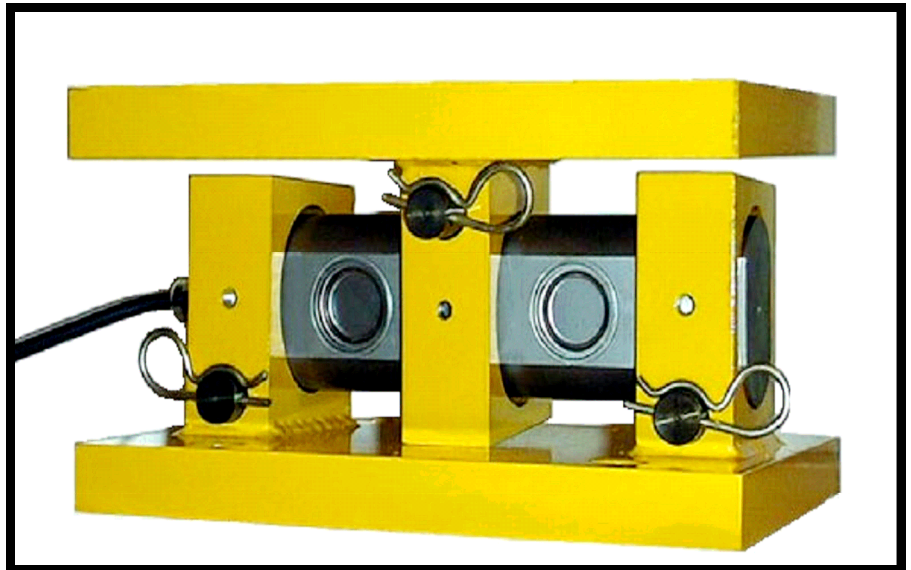


Vessel/tank weighing load cells

Series TNC 810

CAPACITIES 0.5 te to 100te

For Tank, Vessel & Hopper Weighing



- ▶ **Stainless Steel load cell**
- ▶ **Integral lift off prevention**
- ▶ **Simple Installation**
- ▶ **Eliminates need for tie rods**
- ▶ **Allows for mis-alignment of structure**
- ▶ **Sealed to IP67**
- ▶ **Three Year Warranty**

TNC 810

Technical Data

Standard load ranges	Te	0.5,1,2,5,7.5,10,15,20,50,100
Full Load output	mV/V	2.0 +/-0.25%
Excitation voltage (recommended) dc or ac	V	10
Excitation voltage (maximum) dc or ac	V	15
Safe service load	%	150
Ultimate load	%	300
Safe side load	%	100
Combined error (non-linearity & hysteresis)	%	<+/- 0.05
Repeatability	%	<+/- 0.03
Output at zero load	%	<+/- 1.0%
Input resistance	ohms	785 +/-20
Output resistance	ohms	700 +/-2
Creep after 30 minutes (20 deg C)	%	<+/- 0.05%
Operational temperature range	deg C	-20 to +80
Compensated temperature range	deg C	-10 to +40
Temperature coefficient of zero	%/C	<+/-0.005
Temperature coefficient of span	%/C	<+/-0.003
Environmental protection		IP67
Cable length standard	m	5
Insulation	M ohms	>2 G at 100V.dc

NOTE: All percentages related to Full Rated Load

Electrical Connections

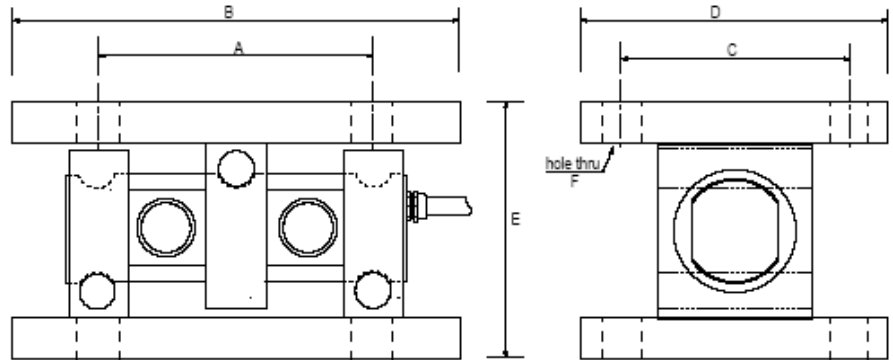
Red + input Green + output
Blue - input Yellow - output
Screen not connected to load cell

Mechanical Interface

Via 8 attachment holes

Construction

Load cell: Stainless Steel
Brackets: Mild steel, Zinc plated & Painted
Shafts: Stainless steel



All Dimensions in mm.

	Capacity	A	B	C	D	E	ØF
Size 1	0.5 – 5t	105	150	94	124	88	13.5
Size 2	2 – 20t	140	200	125	165	115	17.5
Size 3	20t – 50t	175	280	175	255	160	22
Size 4	100t	240	300	190	250	182	26

TNC's policy is one of continuous development and these specifications are subject to change without notice



Creating a pathway to your solution

Unit C3 Acre Business Park, Acre Road, Berkshire RG2 0SA.
 Telephone: 0118 9314107 Facsimile: 01189 9314971
www.tncelectronics.co.uk email: sales@tncelectronics.co.uk