

GF Piping Systems for Major Projects

+GF+

GEORG FISCHER
PIPING SYSTEMS

Materials and
References -

Building Services
Applications

GF Piping Systems for Major Projects

GF offer the largest range of piping system products for Building Services in the UK, all of which bear the GF hallmark of quality and reliability.



CHW - Chilled Water

INSTAFLEX & iFIT	0° to 95°C
AQUASYSTEM	0° to 95°C
COOL-FIT	-50° to 40°C
PE	-50° to 60°C
ABS	-40° to 60°C
Malleable Iron	-20° to 320°C

HWS - Hot water services

INSTAFLEX & iFIT	0° to 95°C
AQUASYSTEM	0° to 95°C
PVC-C	0° to 80°C
Malleable Iron	-20° to 320°C
PRIMOFIT	-20° to 105°C

HTG - Heating

INSTAFLEX & iFIT	0° to 95°C
AQUASYSTEM	0° to 95°C
Malleable Iron	-20° to 320°C
PRIMOFIT	-20° to 105°C

CWS - Cold Water

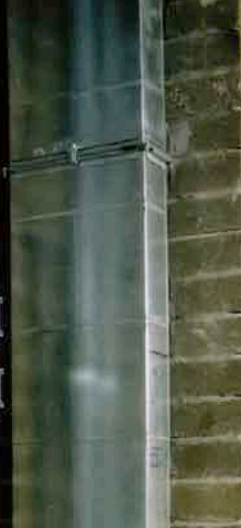
INSTAFLEX & iFIT	0° to 95°C
AQUASYSTEM	0° to 95°C
PVC-C	0° to 80°C
PE	-50° to 60°C
COOL-FIT	-50° to 40°C
ABS	-40° to 60°C
Malleable Iron	-20° to 320°C
PRIMOFIT	-20° to 105°C

	Chilled water CHW	Hot water HWS	Cold water CWS	Heating HTG	Compressed air
INSTAFLEX System 0 to 95°C 16 - 225mm	✓	✓	✓	✓	✓
AQUASYSTEM PP-R 0 to 95°C 20 - 125mm	✓	✓	✓	✓	
iFIT PB / ML 0 to 95°C 16 - 32mm	✓	✓	✓	✓	
PE System -50 to 60°C 20 - 630mm	✓		✓		
COOL-FIT -50 to 40°C 16 - 315mm	✓		✓		
ABS System -40 to 60°C 16-315mm	✓		✓		
PVC-C System 0 to 80°C 16-225mm		✓	✓		
Malleable Iron Fittings -20 to 320°C 1/8 - 4"	✓	✓	✓	✓	✓
PRIMOFIT -20 to 105°C 1/2 - 3"	✓	✓	✓	✓	✓

George Fischer Sales Limited, Paradise Way, Coventry CV2 2ST

Tel. 024 7653 5535, Fax. 024 7653 0450

email: uk.ps@georgfischer.com web: www.georgfischer.co.uk



INSTAFLEX PB

Typical Applications

- Building Services
- Hot and cold water services
- Chilled water systems
- Heating
- Compressed air lines



- Size range: 16 - 225mm
- Pressure: PN16 @ 20°C
- Temperature range 0°C to 95°C
- Thermal Conductivity: 0.32W/m°C
- Expansion/ Contraction: 0.13mm/m°C
- Approvals: WRAS, Kitemark, LR, GL, ABS, BV, DIBt, DNV, KTW, Mairede Paris, RINA
- Joining: Heat fusion (machine required), Electro fusion or Compression





iFIT (PB & ML)

Typical Applications

Building Services

Hot and cold water services

Chilled water systems

Heating

Compressed air lines

Size range: 16 - 32mm

Pressure: PN16 @ 20°C

Temperature range 0°C to 95°C

Thermal Conductivity: 0.43W/m°C,

PB 0.22W/m°C

Approvals: WRAS, DVGW, SVGW

Jointing: Push-Fit





ABS

Typical Applications

Water Treatment

Process cooling water

Secondary refrigeration

Slurries - mining industry

Air conditioning systems in buildings

Vacuum lines



Size range: 16 - 315mm

Pressure: PN10 @ 20°C

Temperature range -40°C to 60°C

Thermal Conductivity: 0.17W/m°C,

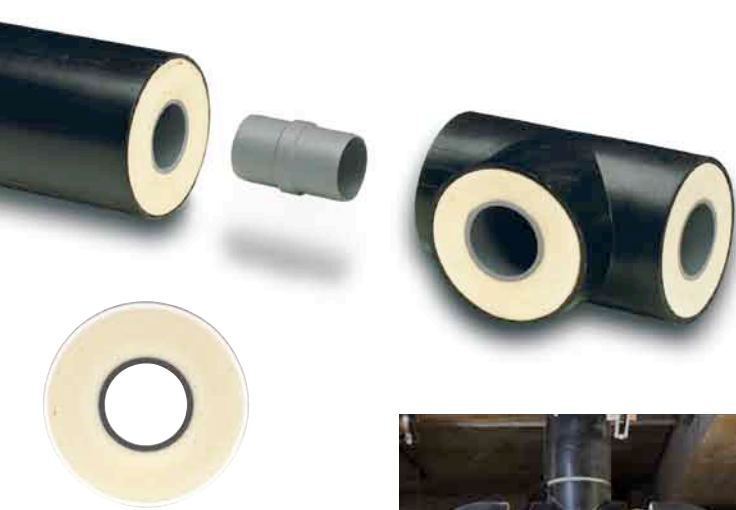
Expansion/Contraction: 0.1mm/m°C

Approvals: WRAS, LR, GL, ABS, BV, DIBt,

DNV, KTW, Mairede Paris, RINA

Joining: Solvent cement jointing

(TANGIT cement for ABS)



COOL-FIT

Typical Applications

Secondary refrigeration

Air conditioning systems
in buildings

Chilled water systems



Size range: 16 - 315mm

Pressure: PN10 @ 20°C

Temperature range -50°C to 40°C

Thermal Conductivity: 0.17W/m°C,

Expansion/Contraction: 0.04mm/m°C

Approvals: WRAS, LR, GL, ABS, BV, DIBt,

DNV, KTW, Mairede Paris, RINA

Joining: Solvent cement jointing
(TANGIT cement for ABS)





AQUASYSTEM

Typical Applications

- Building Services
- Hot & cold water services
- Chilled water systems
- Heating
- Compressed air lines

Size range: 20 - 125mm

Pressure: PN10 & PN20 @ 20°C

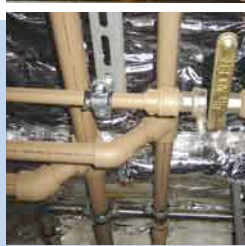
Temperature range: From 0°C to 95°C

Thermal Conductivity: 0.22W/m @ 20°C

Expansion/Contraction: 0.15mm/m°C & 0.04mm/m°C

Approvals: KIWA, WRAS, CSTB, Lloyds

Joining: Socket fusion, Electro fusion





PVC-C

Typical Applications

Hot & cold water services

Chemical process lines



Size range: 16 - 225mm

Pressure: PN16 @ 20°C

Temperature range 0°C to 80°C

Thermal Conductivity: 0.15W/m°C @ 20°C,

Expansion/Contraction: 0.7mm/m°C

Approvals: WRAS, GL, ABS, BV, DIBt,

RINA

Joining: Solvent cement jointing

(TANGIT for PVC-C & TANGIT Cleaning Fluid)



PE

Typical Applications

Building Services

Cold water services

Chilled water services



Queen Alexandra Hospital -
Portsmouth - Haydon
Mechanical & Electrical



Size range: 20 - 630mm

Pressure: PN10 & PN16 @ 20°C

Temperature range -50°C to 60°C

Thermal Conductivity: 0.43W/m°C,

Expansion/Contraction: 0.20mm/m°C

Approvals: WRAS, BSI Kitemark

Joining: Socket fusion, Butt fusion

& Electro fusion





Malleable Iron

Size range: 1/8" - 4"
Pressure: 25 bar up to 120°C
20 bar up to 320°C
Temperature range -20°C to 320°C
Thermal Conductivity: 50W/m°C @ 20°C,
Expansion/Contraction: 0.212mm/m°C
Approvals: FM Approval
Joining: R/Rp threads to ISO 7-1/
EN 10226-1

Typical Applications

- Hot & cold water services
- Heating
- Chilled water systems
- Sprinkler systems
- Compressed air lines



PRIMOFIT Compression Fittings

Size range: 1/2" - 3" steel, 20mm-63mm PE
Pressure: up to 16 bar
Temperature range -20°C to 105°C
Thermal Conductivity: 50W/m°C Expansion/
Contraction: 0.212mm/m°C
Approvals: GF Piping System Accredited
Test Laboratory, BSI Kitemark
Joining: Mechanical end load compression
fittings (no special tools required)

Typical Applications

- Building Services
- Heating
- Compressed Air
- Fuel Line
- Gas Services

George Fischer Sales Limited, Paradise Way, Coventry CV2 2ST
Tel. 024 7653 5535, Fax. 024 7653 0450

email: uk.ps@georgfischer.com web: www.georgfischer.co.uk



Wembley Stadium

London

Design: : Foster & Partners

Construction: 2003 - 2007

Seating Capacity: 90k

Using GF's ELGEF Electrofusion and PE moulded butt fusion fittings, to convey water to the new Wembley Stadium's 2,618 toilets, which Wembley National Stadium Limited (WNSL) estimate is more toilets than any other stadium in the world, is just one aspect of the contract which puts GF into the 'plumbing' record books.

A substantial amount of PE moulded butt fusion pipework was 'customised' off-site at GF's Coventry facility. This made a considerable contribution to reduction of on site working, amount of skilled labour required, shorter contract time and above all helped contain costs.





Greater London Authority

London

Client: Greater London Council

Installers: Axima

Application: Hot & Cold Water services and heating

Products:

Prefabricated INSTAFLEX





Queen Alexandra Hospital

Portsmouth

National Health Service

Installers: Haydon Mechanical
& Electrical

Prefabricated PE Manifolds & ELGEF
Electrofusion Couplings : 63 - 710mm
ABS Pipe and Fittings





Highbury Luxury Apartments

London

Client: Sir Robert McAlpine

Installers: N G Bailey

Application: Hot and Cold water services and heating

Products:

Prefabricated INSTAFLEX





Beetham Tower

Manchester

Client: Ian Simpson Associates

Installers: Rotary Northern

Construction: 2004 - 2006

2nd Tallest residential structure in UK

Products:

INSTAFLEX used for Hot & Cold water services, heating & chilled water services





Royal Albert Hall

London

Client: Royal Albert Hall

Installers: MJN Colston

Application: Hot and Cold water services and heating

Products:

INSTAFLEX





Edinburgh County Council

Edinburgh

Installers: FES Limited

Products:
COOL-FIT pre-insulated piping system was used for the chilled water services
20-110mm



Mercedes-Benz High Performance Engines

Mercedes-Benz Technology Centre

Major Projects Building Services

PE Electrofusion
Fittings



Royal Festival Hall

Mercedes-Benz High
Performance Engines



ROYAL FESTIVAL HALL

BUSINESS REPLY SERVICE

Licence No. CV 850

1

**George Fischer Sales Limited
Paradise Way
Coventry
CV2 2BR**

replyback

Name

Title

Company

Tel.

Fax.

email

Please send me information on Piping Systems in the following materials:

INSTAFLEX PB

AQUASYSTEM

IFIT (PB & ML)

PVC-C

ABS

PE

COOL-FIT

Malleable Iron &
PRIMOFIT

Please send me information on Specialist Systems:

Contain-It

Measurement &
Control Systems

Actuated Valves

Piping Systems for
Building Services

Utility Systems

Fabrication Service

Other (please specify)
.....

George Fischer Sales Limited,
Paradise Way, Coventry CV2 2ST
Tel. 024 7653 5535, Fax. 024 7653 0450
email: uk.ps@georgfischer.com
web: www.georgfischer.co.uk