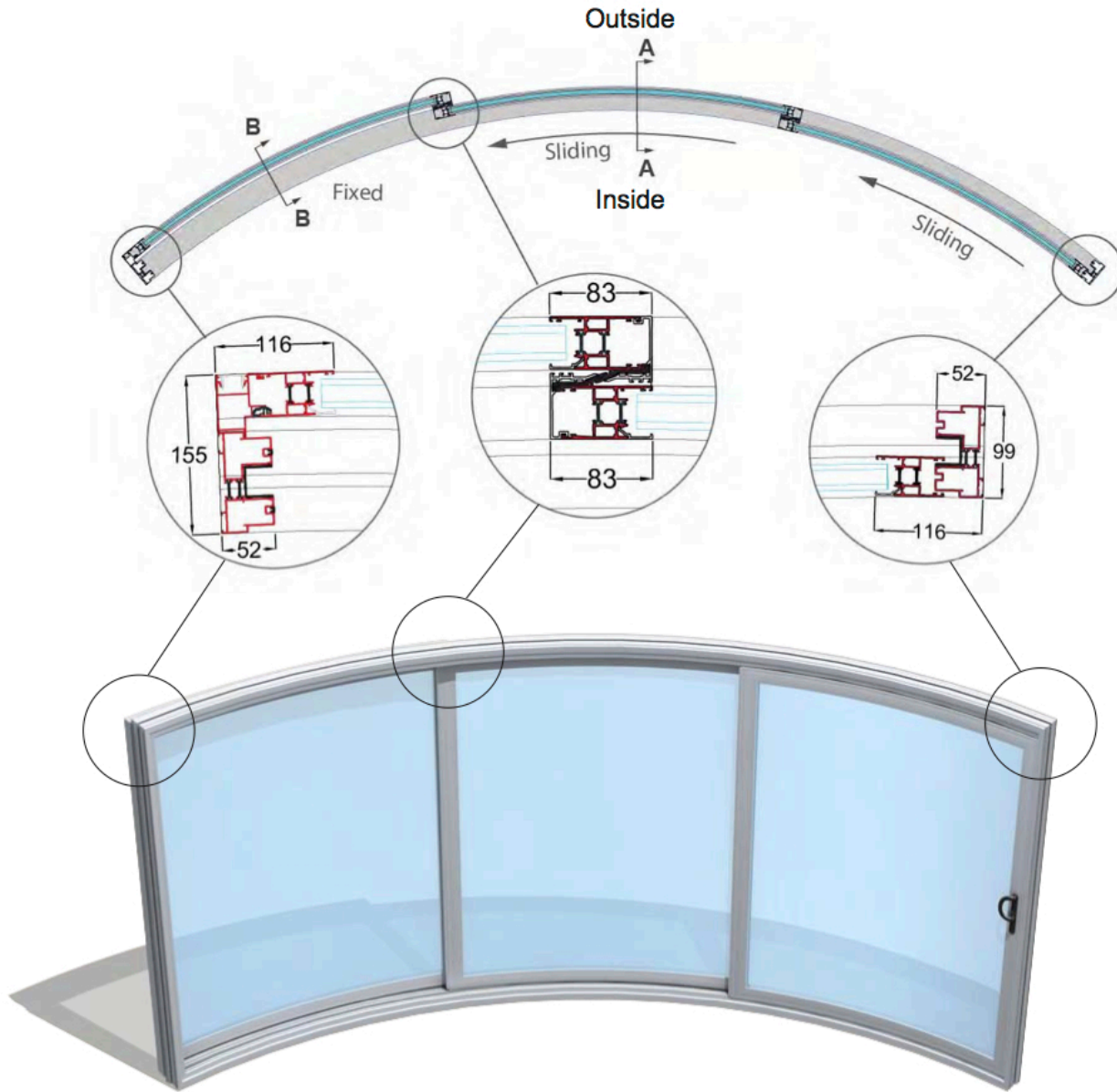
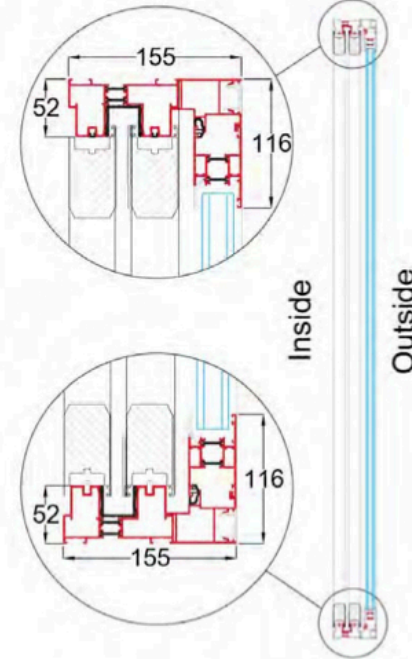


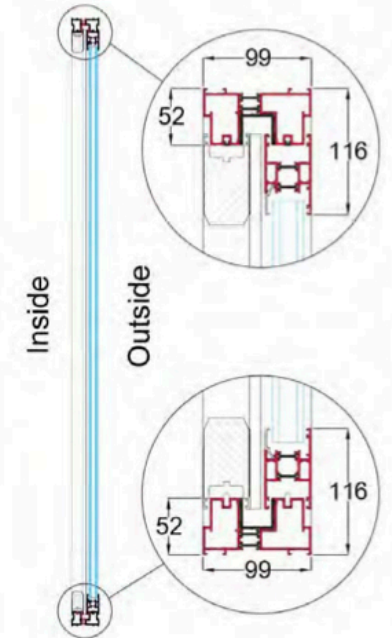
# Curved Door Model W3F (3 doors - 2 sliding, 1 fixed)



W3F Generic Section B-B



W3F Generic Section A-A



## Section profile structure

Twin Polyamide Thermally Broken 6063 T5 extruded aluminium profiles, stainless steel wheel track

## Paint/coating: 60-100 micron

Polyester powder coating in standard RAL colour, dual colour options available

## Glazing

28 mm Toughened Low-E Double glazing in three options of centre pane U value; 1.7 W/m<sup>2</sup>K, 1.5 W/m<sup>2</sup>K or 1.0 W/m<sup>2</sup>K

## Gaskets

EPDM (ethylene-propylene rubber) in black

**Recommended max height** 2600mm

**Recommended max length** 5250mm (1750mm per sash)

## Sliding mechanism

Regular sliding, bottom rollers

**Balconette**