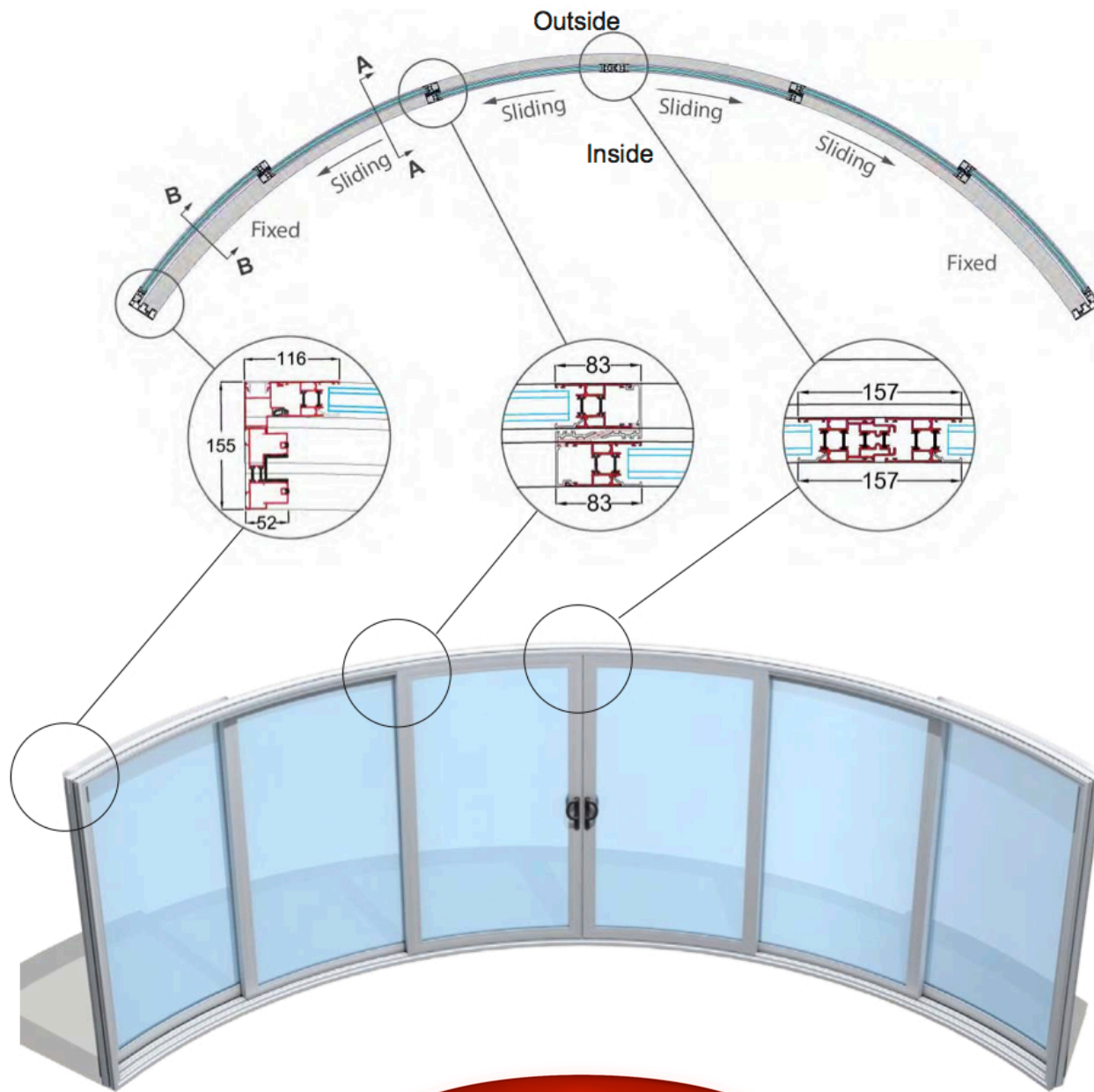
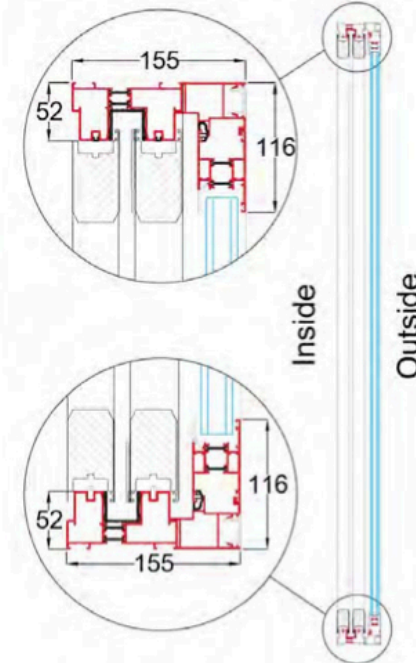


Curved Door Model W6F (6 doors - 4 sliding, 2 fixed)

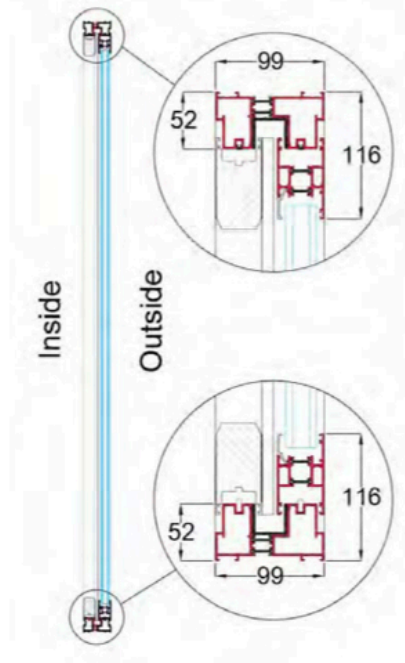


Balconette

W6F Generic Section B-B



W6F Generic Section A-A



Section profile structure

Twin Polyamide Thermally Broken 6063 T5 extruded aluminium profiles, stainless steel wheel track

Paint/coating: 60-100 micron

Polyester powder coating in standard RAL colour, dual colour options available

Glazing

28 mm Toughened Low-E Double glazing in three options of centre pane U value; 1.7 W/m²K, 1.5 W/m²K or 1.0 W/m²K

Gaskets

EPDM (ethylene-propylene rubber) in black

Recommended max height 2600mm

Recommended max length 10500mm (1750mm per sash)

Sliding mechanism

Regular sliding, bottom rollers