



## AirBench FN



### Controls

On/off switch or optional speed control wired to standard 13a plug for rapid installation.



### Filter monitoring

By differential pressure gauge



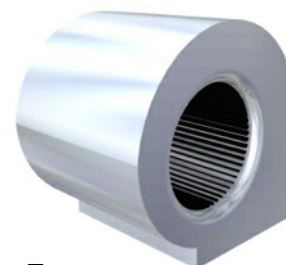
### Filters

Selected to suit the application from the full AirBench range.



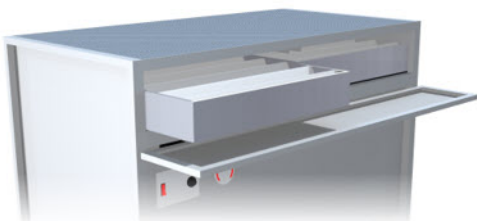
### Body

2mm steel plate, fully welded and powder coated, with hinged front cover for ease of maintenance.



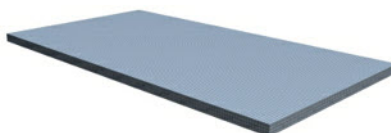
### Fan

High powered centrifugal fan  
\* 2 fans in larger units.



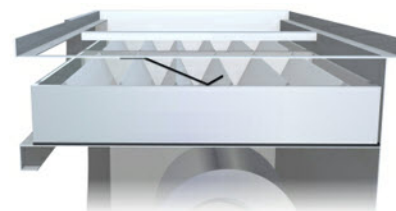
### Filter removal

Quickly and simply by sliding out through the hinged front cover.



### Surface

Heavy duty 3mm perforated steel plate with 4mm dia perforations, powder coated.  
\* In multiple sections on 975 deep units.



### Filter clamping

Spring clamped against purpose made soft rubber seals.



+44 (0) 1206 791191

sales@airbench.com

www.airbench.com

14 Grange Farm Road, Colchester CO2 8JW

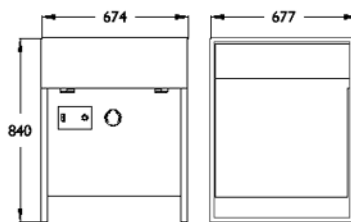




## Available Models

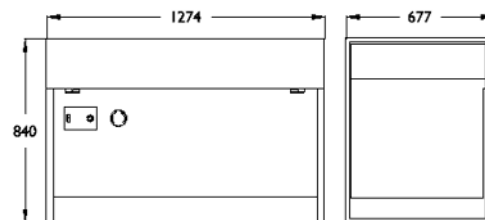
### FN066784

**Fan Type** Forward Curved Centrifugal  
**Fan Power** 170w  
**Airflow** 1000 m3/h - 1.5m/s at surface  
**Dimensions** 674 x 677 x 840 mm  
**Actual Ventilated Area** 610 x 656 mm



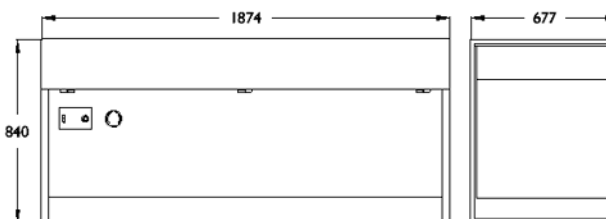
### FN126784

**Fan Type** Forward Curved Centrifugal  
**Fan Power** 550w  
**Airflow** 2000 m3/h - 1.5m/s at surface  
**Dimensions** 1274 x 677 x 840 mm  
**Actual Ventilated Area** 1210 x 656 mm



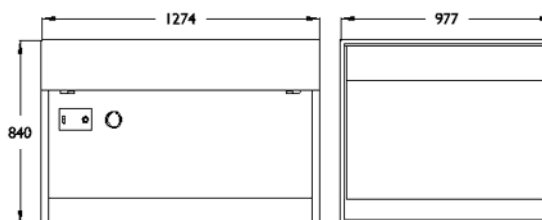
### FN186784

**Fan Type** Forward Curved Centrifugal  
**Fan Power** 570w  
**Airflow** 3000 m3/h - 1.5m/s at surface  
**Dimensions** 1874 x 677 x 840 mm  
**Actual Ventilated Area** 1810 x 656 mm



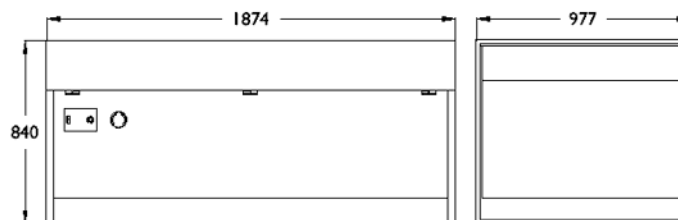
### FN129784

**Fan Type** Forward Curved Centrifugal  
**Fan Power** 570w  
**Airflow** 3000 m3/h - 1.5m/s at surface  
**Dimensions** 1274 x 977 x 840 mm  
**Actual Ventilated Area** 1210 x 956 mm



### FN189784

**Fan Type** 2 x Forward Curved Centrifugal  
**Fan Power** 2 x 570w  
**Airflow** 4500 m3/h - 1.5m/s at surface  
**Dimensions** 1874 x 977 x 840 mm  
**Actual Ventilated Area** 1810 x 956 mm



### Available Filter Configurations

- A: Dust
- H: Fine Dust
- F: Fine Dust - Two Stage
- B: Very Fine Dust
- L: HEPA Filtered
- E: Fume in Low Volumes
- S: Solder Fume
- C: Dust with some sparks

### General

**Power Supply** 240v, Single Phase - 110v available  
**Surface Loading** 150kg - Higher loadings on request  
**Finish** Textured grey powder coat - other finishes on request  
**Noise Level** 63 dBA average across range.

Specifications vary for some filter configurations - "A" configuration shown.

Dimensions nominal; specifications subject to change.

+44 (0) 1206 791191

sales@airbench.com

www.airbench.com

14 Grange Farm Road, Colchester CO2 8JW

