

DEMILBISS

DE
MI
BI
SS
G
mbH



DEVILBISS



LARIUS



Ransburg

BINKS



We supply

- spray paint kit
 - powder coating equipment,
 - spray booths
 - associated finishing products
- sourced from the world's foremost manufacturers, to meet your requirements for
- wood finishing
 - powder coating
 - contract decorating
 - heavy fabrication
 - Automatic plant
 - jobbing coating

The location of our company - centrally within the UK - enables us to provide an efficient and professional service to the majority of the country's industrial areas.

We are happy to track down spares and accessories for your spraying equipment, on a one off or regular basis.

Repair and refurbishment is carried out by our highly trained and experienced engineers, who can restore your existing equipment to its original state.

If your equipment fails, affecting your production output, take advantage of our equipment hire facility. We can undertake your urgent repairs while you continue to satisfy your customer orders.

To ensure that you get the best possible deals please contact our sales specialists.

Contact us if you have any other requirements.

Tel 01274 664668

Fax 01274 66338

www.sprayingequipment.co.uk

Our On Line Catalogue Contains

Spray Guns

Pages 3 - 8

Low Pressure Spray Systems

Page 9

High Pressure Pneumatic Systems

Pages 10 - 13

Electric Airless Spray Units

Pages 14 - 17

Personal Protective & Safety Equipment

Page 18

Spares & Accessories

Pages 19 - 20

Finishing Plant

Page 21

Powder Coating Equipment

Page 22



Spray Gun System Types



Gravity Fed Systems

Low material consumption (up to 5 litres per day)
Suitable for slightly and normally reduced material

Viscosity less than 40 seconds CA 4

Ideal for rapid changes of fluid

Cup capacity 0.6 L (20 oz)

No loss of fluid

Higher fluid flow compared to suction fed system

Easy flushing



Suction Fed Systems

Low fluid consumption (up to 5 litres per day)

Suitable for normally or highly reduced material

Suitable for fluid with viscosity of less than 05 seconds CA 4

Ideal for rapid changes of fluid

Cup capacity 1 L (33 oz)



Pressure Fed Systems

Material consumption starting from 3 litres per day

Suitable for slightly, normally or highly reduced material

Suitable for fluid of any viscosity

High rate of fluid flow

Can be used with a pressure pot, piston pump or diaphragm pump

Spray Guns

LARIUS

DEVILBISS

Principles of conventional spraying

Conventional spraying comes about by mixing the product with air as it leaves the gun. The product comes out of the nozzle under low pressure and is sprayed by a fan of compressed air coming from the aircap at around 45 - 90 psi. On pulling the trigger, the air is released first by the air valve and then the product is released by the needle. The complete assembly of the aircap, needle and nozzle is called the projector.

Hints from ISE's experts...

At the end of the spraying movement, immediately release the trigger to stop the product flow.

To achieve consistent application thickness, maintain the same motion for each pass of the gun and keep the spray perpendicular to the surface at all times.



Spray Guns



Suction, gravity and pressure feed available as EPA compliant, HVLP or conventional.

*Variable fan Airmix gun
MVX60,120 or 200 Airmix® gun kit*

VX14 Aircap
7.5 metre Fluid and air lines
In line mesh filter
Tungsten carbide seat



Spray Guns



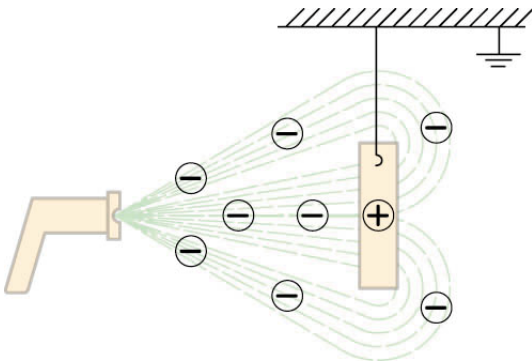
GTi Pressure

- First class atomisation and material distribution
- Reduced overspray and significant material savings
- Choice of either HVLP spray technology (No. 105 air cap) or Compliant technology (No. 110 air cap)
- Transfer efficiency comfortably in excess of the EPA specified 65%
- Tough, corrosion resistant anodised gun body
- Accurate repeatable settings from data markers on controls
- Lightweight parts to reduce operator fatigue
- Wide choice of fluid tips to suit materials and preferred flow rate
- Modular components for easier, faster servicing
- Designed for use with the full range of remote cups and pressure tanks



Electrostatic Spraying

Principles of electrostatic spraying



Used together with conventional or AIRMIX® spraying, the electrostatic effect delivers a higher transfer efficiency onto the surface. The fan of paint is electrically charged while the surface is grounded. The resultant electrostatic field changes the trajectory of the paint particles which are attracted towards the surface. This amounts to what we call the 'wrap-around effect' which increases the transfer efficiency and at the same time reduces overspray.

Composition of a typical electrostatic system

A standard electrostatic spraying set-up consists of a pump, a power supply, a spray gun and two hoses.

- The standard pump (or pressurised tank) can be chosen from the standard pneumatic or AIRMIX® range
- The power supply converts the main alternating current to a direct current and reduces the voltage



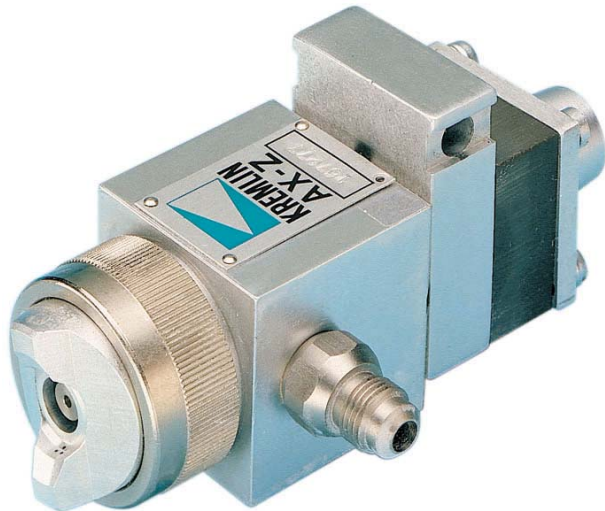
It contains a safety system whereby the electrostatic effect is only permitted while the gun is actually spraying. It also automatically reduces the voltage if the gun approaches a grounded area.

A setting on the box allows the voltage to be adjusted between 20 and 85 kV.

- The two hoses carry the atomising air and the product to the gun
- The fluid hose is chosen to suit the type of gun and the resistance of the product.
- A round or flat fan can be chosen, to suit the application.

Automatic spraying

Automatic spraying allows the user to increase productivity and improves the quality of work. The product is fed to the spray gun by means of a pump.



An automatic spraying installation can be installed in one of two ways:

- by means of moving automatic spray guns, where the parts are either fixed or moving

- by means of one or more fixed spray guns.

In the latter case, the parts can move in relation to the guns by rotating on automatic turntables or (for small, simple parts with mainly flat surfaces) by linear movement.



DEVILBISS



LARIUS



Low Pressure Spray Systems

Systems include diaphragm pumps and pressure feed tanks. Available for use with water and solvent based materials.

- low maintenance
- high capacity
- simple to operate
- 'direct from the can' spraying
- Colour changes in minutes



Tel 01274 664668

Fax 01274 66338

www.sprayingequipment.co.uk



High Pressure Pneumatic Spray Pumps

Available as airless and air-assisted airless kit:
many uses including production wood finishing
and heavy fabrication:

- high quality finish
- high speed application
- reduces paint consumption
- low overspray
- can handle high viscosity materials



High Pressure Pneumatic Spray Pumps

Available as airless and air-assisted airless kit:
many uses including production wood finishing and heavy fabrication:

- high quality finish
- high speed application
- reduces paint consumption
- low overspray
- can handle high viscosity materials



DEVILBISS



LARIUS



Tel 01274 664668

Fax 01274 66338

www.sprayingequipment.co.uk



High Pressure Pneumatic Spray Pumps



Available as airless and air-assisted airless kit:
many uses including production wood finishing
and heavy fabrication:

- high quality finish
- high speed application
- reduces paint consumption
- low overspray
- can handle high viscosity materials



Tel 01274 664668

Fax 01274 66338

www.sprayingequipment.co.uk

AIRMIX® Spray Equipment



- 40:25 Airmix® Package Features**
- .. 40 to 1 pressure ratio
 - .. 50cc out put per cycle
 - .. Stainless Steel
 - .. Water or Solvent based paints
 - .. High Pressure application (240bar/3480psi)
 - .. Large suction valve
 - .. Twin Gun Capability
 - .. Operate within a large range of viscosity
 - .. 25% to 10% savings compared to other (Conventional, Air-Assisted Airless equipment)

- Ø 40:25 Stainless Steel Pump
- Ø Inline Filters
- Ø "New" mvx Airmix Hand Gun
- Ø VX14 Aircap
- Ø Tip of your Choice
- Ø 7.5 Metre Air & Fluid Hoses
- Ø Air & Fluid Regulators
- Ø Wall or Trolley Mounted
- Ø Commissioning



Electric Airless Spray Units



These spray units are ideally suited for site work or other situations where compressed air is not readily available.

Principles of airless spraying

Airless spraying involves making a fluid pass through a small tip under high pressure.

Atomisation is processed only by this hydraulic pressure - without the need for additional air.



Only one fluid hose feeds the gun.

The feed pump must deliver a pressure between 60 and 90 bar, the precise value depends on the application.

The desired quality finish is dependent on viscosity, particle size, fluid pressure, tip size.

The fluid needle of the gun is activated by the trigger.

The tungsten carbide tip is housed in a n insert fitted in front of the seat.

For spraying quick drying paint or material with a high solid content. The use of a reversible tip ensures speedy unblocking.

The fan is determined by the tip: the orifice diameter affects the application flow rate and the angle at which the tip is milled determines the width of the fan.



Electric Airless Equipment



Cart mounted 'Storm 5'

110v electric airless spray system, complete with manual spray gun, three stage fluid filtration, pressure control, GF gauge and two reversible spray tips with a tip adapter; one tip is suitable for large area spraying and the other allows more control for bracketry and more intricate work.

Brief Specification:

Motor 1.8 kW / 110v (approx.
2.4hp)

Paint hose 10m o/a length

Pressure 0 - 3200 psi

Delivery 4.0 litres per minute
(max)

Weight 42 kg



Electric Airless Equipment

Larius GT is a high power membrane pump with outstanding performance.

It is suitable for spray painting in the building sector and for steel structural works.

It is sturdy yet handy, extremely easy to use and can carry out every type of spray painting.

It can be fitted with an electric motor or diesel engine.

With a gravity feed tank it is ideal for high viscosity products.

It may be also be coupled with an electrostatic CH60 airless spray gun.



Larius Dali

- Maximum delivery 4 litres /minute
- Maximum tip size .025
- Maximum pressure 250 bar
- 110 Volts
- 1.1 KW motor
- Weighs 38Kg



Personal Protection & Safety

ISE can supply all the personal protective and safety equipment you can possibly need, including:

- air fed breathing masks
- face masks
- coveralls
- hand cleansers.



Air Fed Mask

- A single air line supplies breathing and spraying air
- One piece high specification goggles are included
- The facepiece incorporates dual exhalation valves and inlet air diffuser
- Waistbelt incorporates odour filter and preset visor air regulator
- Outfit includes high quality gun hose (1.2 M x 8 mm bore)



Integral Style Air Fed Mask

- A single air line supplies breathing and spraying air
- Waistbelt incorporates odour filter and preset visor air regulator
- Visor is supplied with both foam and fabric face seal cassettes
- The visor is hinged with adjustable crown strap and ratchet headband

Spares & Accessories

For all types of spray equipment, together with consumable items such as both filters, chemicals, sanding pads, masking products.



Spray Booth Filter

- Up to 98% filtration efficiency
- Outlasts other filters three to five times
- High loading capacity - longer working life - low pressure drop
- Expansion strapping ensures correct spacing of filter corrugations
- Filter marked at every foot for ease of cutting
- Concertina design reduces storage and transportation costs
- 'Four face filtration'
- Bright white spray face - improves spray booth lighting conditions

The disposable paper filter consists of two sheets of heavy cardboard paper formed into double accordion type folds with staggered holes to provide a highly efficient filter. Paint laden air is drawn into the filter by the spray booth fan and is forced to change direction four times, causing particulate to adhere to the surfaces of the filter before exhausting to atmosphere. The large air openings in the filter allow high volumes of air to be exhausted without loss of efficiency as the media 'loads', resulting in a much longer life than other filter systems.

Finishing Plant



Spray booths, industrial ovens and automatic plant to suit your specific requirements.



Dry Filter Spraybooths with centrifan, manometer and 'full face' extraction system



Water wash spray booth

To improve efficiency and air movement within the enclosure, we provided a recessed channel for the overhead track system. This reduces contamination of the track mechanism and subsequently creates a clearer and safer workstation for the operator.



Typical Duct System

Top outlet, rises vertically, penetrates the roof and discharges to atmosphere at approximately 8m above ground level via an EPA compliant cowl.

Powder Coating Equipment

Including ovens, booths - tailored for both contract coaters and OEMs.



Airmix® systems



**ONLY
£2100**

20.25 Airmix® system

20.25 stainless steel pump (wall mounted)
Recirculation and high pressure filter
MVX120 Airmix® gun
VX14 aircap
Stainless steel needle seat
2 Inline mesh filters
7.5 metre air and fluid lines
and
3 FREE AIRMIX® TIPS
worth £204.75

40.25 Airmix® system

40.25 stainless steel pump (wall mounted)
Recirculation and high pressure filter
MVX 200 Gun
VX14 aircap
Tungsten carbide needle seat
2 Inline mesh filters
7.5metre air and fluid lines
and
3 FREE AIRMIX® TIPS
worth £204.75



**ONLY
£2400**

Variable Fan Airmix gun

MVX60, 120 or 200 Airmix® gun kit



VX14 Aircap
7.5 metre Fluid and air lines
In line mesh filter
Tungsten carbide seat
and
3 FREE AIRMIX® TIPS

Part number:
MVX60: 151260590
MVX120: 151260600
MVX200: 151260610

MVX Spray Gun

The first AIRMIX® spray gun with fan width adjustment; a benchmark for all applications. Its ergonomics have been worked on with particular care, being comprised of high quality, precision components. Moreover, it gives the user the ability to adjust the fan width without changing tips or modifying the usual settings.

Features/Benefits

- Ergonomic conception and light trigger, leading to less operator fatigue and improved productivity
- Quick fan width adjustment, leading to higher efficiency and productivity
- Stainless steel fluid passages means that water based and two component products can be used
- New design of tip and aircap gives outstanding spraying quality and reduced overspray

PMP150 Airspray Electrostatic system

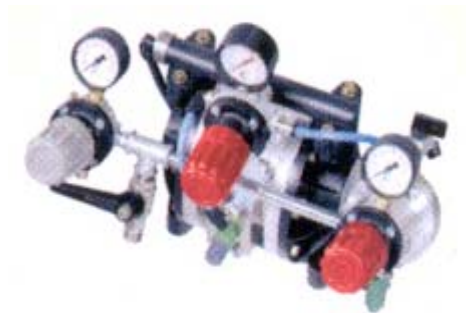
Airspray electrostatic systems



PMP150 Pump (wall mounted)
KMV Electrostatic gun
STD9 Power Pack
7.5metre fluid and air lines

PMP150 System

ONLY £3,100



Booths & Extraction 1



Booths & Extraction 2



Spray Equipment - High Pressure



Spray Equipment - Low Pressure



Airless - Contractor



Ducting Systems



Accessories



Special Applications

