

If there is one type of establishment which encapsulates the need for **SignsforSafety** it is educational premises. There is the need to protect the young and exuberant who are daily at risk, to control and direct the parents and visitors and to help the staff to address and manage the many health and safety issues.



Arrivals



Your School

Our College

Kingdom University

Sunny Nursery

Science laboratory

Goods Inwards

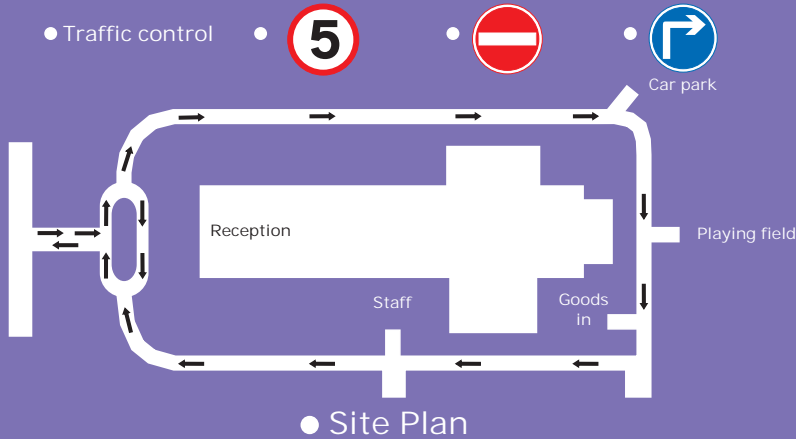
Astor block

Caretaker

Gym facilities

Your school name

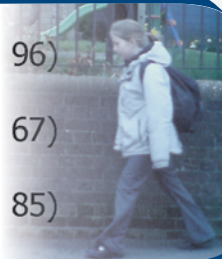
- Report to reception
- Drive slowly
- Drop zone
- Visitors parking
- Staff parking
- Disabled parking
- Traffic control



Eye Link

- Bespoke Signs (See page 94 - 96)
- Traffic Signs (See page 65 - 67)
- Information Signs (See page 84 - 85)

Signs for Safety



Signs must be readable (see page 3), follow the colour and symbol codes (see back of front page) and on a material suitable for the environment in which they reside (see page 2). Each section of the **SignsforSafety** book gives you the classes of signs but your risk assessments will determine the selection you need to make. Here are some examples.

Safety

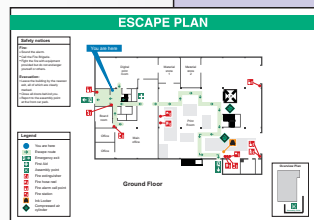
Information signs
see pages 84-85

Prohibition signs
see pages 32-35

Mandatory signs
see pages 28-31

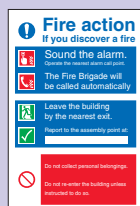
Posters
see pages 76-81

Glass markings
page 62



Fire plan
page 17

Reception



Fire signs
page 22-27



Zone chart frames
page 92



Fire Equipment see pages 22-27



Tapes see page 18



Panoramic sign
page 27



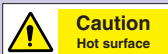
Fire door signs
pages 28-31

Canteen

Information
page 84-85

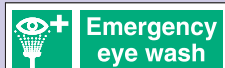


First aid signs
pages 68-69

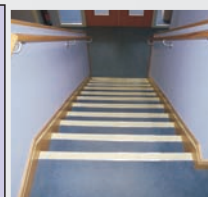


Laboratory

Bespoke sign



Page 69



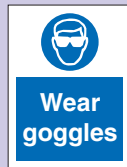
Stair nosing
page 19



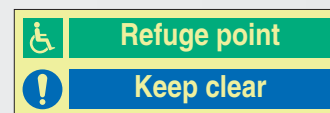
Kitchen & catering
pages 70-73



Page 48



Page 30



Evacuation route signs & way guidance system
pages 10-21



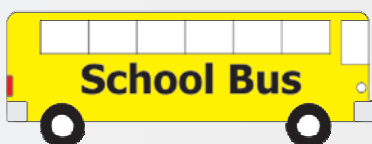
Children on board
page 84



Emergency lights
page 21

School Rules

Bespoke document



Motor vehicles
see page 35



Fire assembly point page 13

Both occupants and visitors should be able to navigate the school premises. While we provide a variety of standard signs at a cost effective price, a bespoke sign design/colour range may be preferable. Consult our Sales Team for ideas and/or design your own for us to manufacture. We also we have the ability to produce signs and posters in a variety of languages.



Road traffic signs pages 65-67

Direction

Information signs page 84

Mandatory sign page 30

Prohibition see page 34

Hanging door signs page 85

Swimming area

Caution Water depth 2.0m

Smoking area

Information signs pages 84-85

No entry to unauthorised personnel

Prohibition see pages 32-35

Warning Fire risk

Hazard sign page 37

Fuel Oil

Accidents must be reported

Mandatory sign page 31

Portable sign page 34

Disabled parking only

Visitors parking only

Road traffic signs page 66

Eye pod

Chose your message, colour and style

Contact our Sales Team.

Design Your Own

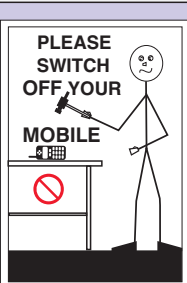
The security of people and property is important for the well being of the school community. Each community is different and the approach to security may differ enormously. However, if your messages are not clear neither will your defence be adequate should there be a serious lapse in security.



Security & Training



Security page 50



Private property. Keep out

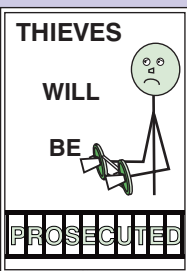
Visitors must wear their badge at all times



Security page 51 & 54



Polite signs page 82



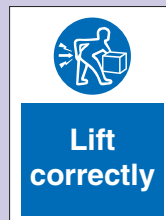
Polite signs page 82



Hazard page 39



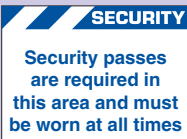
Red & White Barrier Tape. Page 19



Mandatory page 31

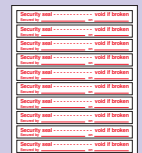


Security page 50



Security signs page 51 & 54

Security Office



Security signs page 53-55

Training room



Posters page 76-79



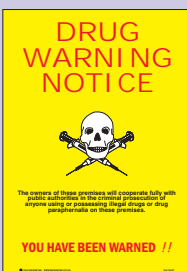
DVD page 24



Prohibition signs page 30-32



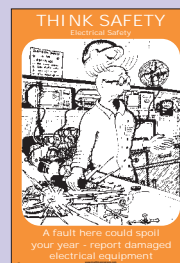
Road traffic signs 65-67



Posters page 77



Temporary Tie Tags page 58-59



Posters page 80-81



Eye Pod

The signs and posters indicated on pages 88-91 are only a brief guide to the signs available to help the Responsible Person. The risk assessments are vital and our design team is ready to help meet with your specific requirements.

... and there is more!