

The leading range of software for UK builders



PlansXpress



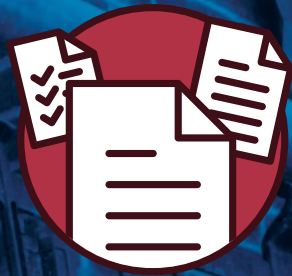
EstimatorXpress



3D Visual Estimating



Health & Safety Xpert



ContractsXpert



ProjectXpert

Successful projects start with HBXL Building Software

After 25 years as a builder I became so fed up with spending all hours agonising over estimates that I decided to find an easier way – and that’s essentially how HBXL began over a decade ago with one estimating software program. Now our 12,000 users, our associations with trade organisations, merchants and partners, all suggest that it was just what the industry was waiting for.

Now we have more programs and more people – highly knowledgeable advisors, a super-supportive help team and an all-important Research & Development unit. And we’re all working towards the same goal to improve the working processes within the industry to better every building firm’s chances of success – whether IT savvy or not, a Groundworker or a Roofer, a small business or a Property Developer.

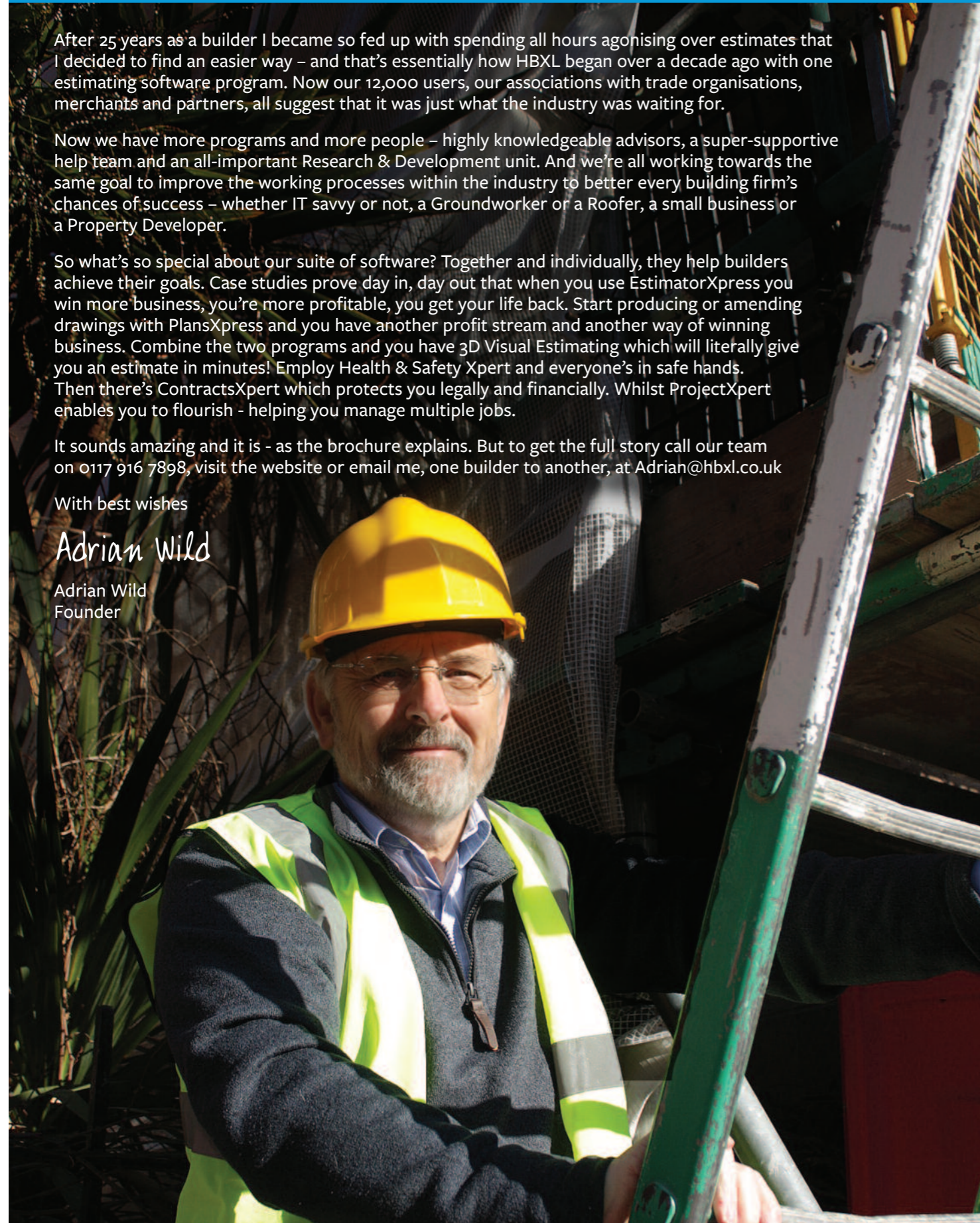
So what’s so special about our suite of software? Together and individually, they help builders achieve their goals. Case studies prove day in, day out that when you use EstimatorXpress you win more business, you’re more profitable, you get your life back. Start producing or amending drawings with PlansXpress and you have another profit stream and another way of winning business. Combine the two programs and you have 3D Visual Estimating which will literally give you an estimate in minutes! Employ Health & Safety Xpert and everyone’s in safe hands. Then there’s ContractsXpert which protects you legally and financially. Whilst ProjectXpert enables you to flourish - helping you manage multiple jobs.

It sounds amazing and it is - as the brochure explains. But to get the full story call our team on 0117 916 7898, visit the website or email me, one builder to another, at Adrian@hbxl.co.uk

With best wishes

Adrian Wild

Adrian Wild
Founder



Don't take our word for it...
read what our software users have to say!



EstimatorXpress saves time and money

“EstimatorXpress has really helped me save time and win work as it stands out from the other software in the amount of detail it includes in the estimate, it gives my customers confidence and peace of mind that there are no hidden costs which in turn helps the project run smoothly.”

Richard Vincent, R Vincent & Sons

Accurate, simple estimating

“Estimating is now so simple I just click, print and it’s out the door. Oakleafe isn’t the cheapest but because our estimates are so accurate we win more work. I know for a fact that the estimates we produce using EstimatorXpress have won us jobs. That’s why we’ve expanded so much.”

Lee Goodwin, Oakleafe Property Services



Across-the-board success

“My whole experience of the HBXL team, including the support I received from the tech guys was great. The software has given us the insight, knowledge and confidence to know that our prices are right. We are able to say now, that’s the price, no negotiation, if you don’t like it, we don’t want the business.”

Charles OKell, UK Pro Build

Less time spent costing

“Before using EstimatorXpress and PlansXpress to visually estimate, it could take me half a day to calculate a £25k estimate using my own specs, dimensions and tacking on a provisional for anything I missed out. Now my estimates are more comprehensive and that same job takes me at most 3 hours, saving me a lot of time!”

Peter Lindley, Proplas Developments



Support all the way

“They’re always extremely helpful even when I ask Noddy questions! The complimentary training webinars have been excellent and they’re extremely comprehensive- the guys don’t end the session until they’re happy that every question has been fully answered. I reckon my win rate is better than 50% now, which is all I can ask for. So I’m very pleased.”

Graham Saunders, Trentace

Much easier health & safety

“We use Health & Safety Xpert daily on site as well as the office in order to comply with the constant changes in the H&S regs such as risk assessments and method statements. It helps make the job a lot, lot easier. Health & Safety Xpert makes sure staff are working safely and how I want them to work.”

Mark Jones, MJ Building Services (Cornwall)





EstimatorXpress: Fast, accurate estimating software for extensions, new builds, renovations and more

On average users win 233% more business!

Team up with EstimatorXpress, the industry standard for estimating software and let us help you win more business. It's proven to improve your win rate!

We've created a system that will estimate any building job of any size and give you the tools to know exactly where your money is going and how much profit you're going to make.

For builders, subbies and specialist trades

It couldn't be easier with simple onscreen drawings to input dimensions. And unlike other software products, we provide you with all you need in one package for everything from extensions and new builds to lofts, renovations and small jobs. And if you are a specialist tradesman or contractor you can choose from our Trade editions. It costs the lot with 100% accuracy - all your materials, labour, plant and subbies - giving you a professional quote and a well-earned profit.

Cut your estimating time by 39% every year!

EstimatorXpress is actually saving builders over 260 hours each year on estimating, typing quotes, keeping prices up-to-date and scheduling material orders. That equates to over a months worth of time-saving each year thanks to speedy calculators, instant quotes and immediate reports! Not bad eh?!

Keeps prices accurate and up-to-date

Unlike other systems you don't need to spend ages keeping prices up-to-date. Only with EstimatorXpress can you choose to link to tens of thousands of live material prices from our selection of builder merchant partners. Alternatively we give you thousands of live prices with the HBXL Price Tracker™ database, or if you really want to you can choose to key in your own prices and keep them current - the choice is yours!



Soon you'll be racing through your estimating - just 5 minutes for a roof or one hour for a house.

Using our X-Connex™ connectivity combine with PlansXpress for 3D Visual Estimating. Produce architect-quality plans or simply trace an existing plan and take off an estimate in minutes. See pages 12 and 13.



You can link EstimatorXpress to live prices from the following merchants, term and conditions apply:

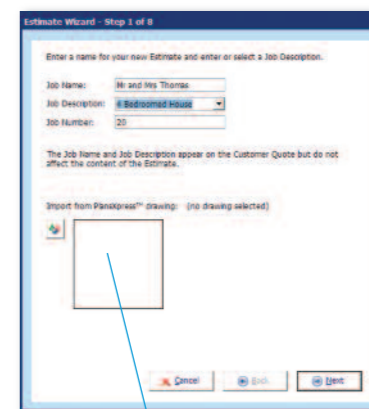


How does it work and where does it get its prices from?



Step 1. Choose your job

Use the Estimate Wizard to create each new estimate in these easy steps.

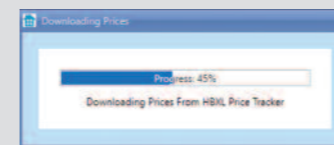


Even quicker!

Alternatively, import a set of plans from our PlansXpress software and watch the software price up the whole job automatically - in minutes!



Select your drawing and import it here.

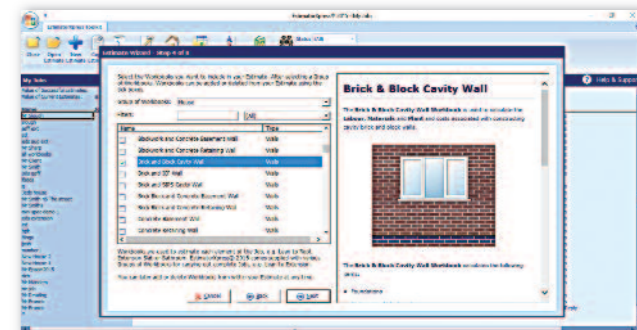


Connect to LATEST PRICES 24/7

Unique to EstimatorXpress - Price Tracker™ and a link to one of our many merchant partners puts latest materials costs at your fingertips - accurately and instantly!

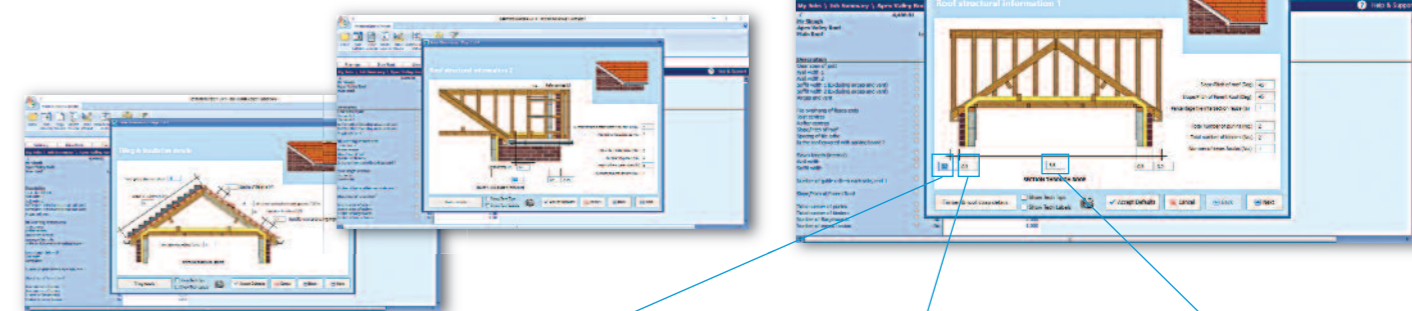
EstimatorXpress comes with over 1000 resources covering materials, labour and plant, so you don't have to build up a Price Book from scratch. Our exclusive Price Tracker internet technology links you to real world material rates to keep your estimates up-to-date. Opt to link to an online catalogue from one of our leading builders merchant partners (exclusive to EstimatorXpress) and get access to 100,000s of extra products at trade prices - and add your own suppliers too!

Really clever!



Step 2. Type in dimensions

Easily edit any dimensions that differ from your plans - virtually no typing required! No guesswork. Nothing is missed. Nothing is overlooked. Unlike other broad brush systems, it has calculated the lot in detail - materials, labour and plant!



See website for system requirements.

Simply click on the drawing to enter your dimensions.

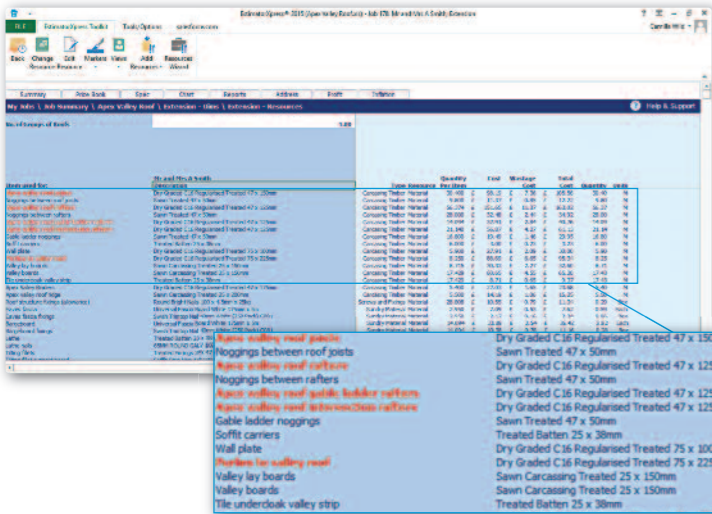
Many dimensions are pre-entered for you to speed up pricing the work.

Easily edit any that differ from your plans - virtually no typing required!

For more info, give us a call on 0845 1234 065 or 017 916 7898 or visit www.hbxl.co.uk

How much of the work does EstimatorXpress do for me?

Estimating is just so straightforward with EstimatorXpress. Having entered your dimensions into easy to understand pictures of what you are building – now look at how much it's done for you!



Step 3. Confirm resources

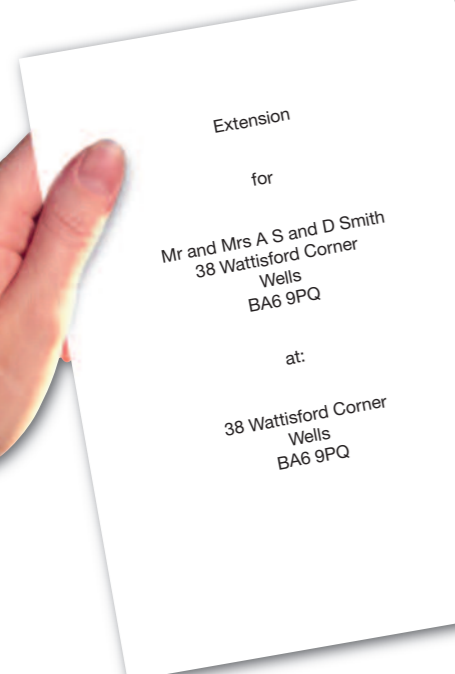
You won't find any other software with the flexibility of EstimatorXpress! It chooses the resources you commonly use for maximum time savings and you can then amend any material, labour or plant resources specific to the job on the fly for total accuracy. See the unit cost, the estimate rate, quantities and wastage. You can also save your resources as 'favourites' so it remembers the way you work for future projects.

Item Name	Quantity	Unit	Estimate Rate	Material	Labour	Plant	Wastage	Total
Dry Graded C16 Regularised Treated 47 x 150mm	30.400	£	98.19	£	7.36	£	105.56	30.40 M
Sawn Treated 47 x 50mm	9.800	£	11.37	£	0.85	£	12.22	9.80 M
Dry Graded C16 Regularised Treated 47 x 125mm	56.374	£	151.65	£	11.37	£	163.02	56.37 M
Sawn Treated 47 x 50mm	28.000	£	32.46	£	2.44	£	34.92	28.00 M
Dry Graded C16 Regularised Treated 47 x 125mm	14.094	£	37.91	£	2.84	£	40.75	14.09 M
Dry Graded C16 Regularised Treated 47 x 125mm	21.140	£	56.87	£	4.27	£	61.13	21.14 M
Sawn Treated 47 x 50mm	16.800	£	19.49	£	1.46	£	20.95	16.80 M
Treated Batten 25 x 30mm	6.000	£	3.00	£	0.23	£	3.23	6.00 M
Dry Graded C16 Regularised Treated 75 x 150mm	5.900	£	27.91	£	2.09	£	30.00	5.90 M
Dry Graded C16 Regularised Treated 75 x 225mm	8.750	£	68.69	£	6.45	£	75.14	8.75 M
Sawn Carcasing Treated 25 x 150mm	8.715	£	30.33	£	2.27	£	32.60	8.71 M
Sawn Carcasing Treated 25 x 150mm	17.429	£	60.65	£	4.55	£	65.20	17.43 M
Treated Batten 25 x 30mm	17.429	£	8.71	£	0.65	£	9.37	17.43 M

You can throw your calculator in the bin! It's automatically scheduled all the materials, labour and plant for the job in an instant!

Item Name	Quantity	Unit	Estimate Rate	Material	Labour	Plant	Wastage	Total
Apex valley roof joists	8	@	3.8	30.40	Dry Graded C16 Regularised Treated 47 x 150mm			
Nogging between roof joists	28	@	0.35	9.80	Sawn Treated 47 x 50mm			
Apex valley roof rafters	16	@	3.523	56.37	Dry Graded C16 Regularised Treated 47 x 125mm			
Nogging between rafters	80	@	0.35	28.00	Sawn Treated 47 x 50mm			
Apex valley roof gable ladder rafters	4	@	3.523	14.09	Dry Graded C16 Regularised Treated 47 x 125mm			
Apex valley roof intersection rafters	6	@	3.523	21.14	Dry Graded C16 Regularised Treated 47 x 125mm			
Gable ladder noggings	28	@	0.6	16.80	Sawn Treated 47 x 50mm			
Softit carriers	30	@	0.3	6.00	Treated Batten 25 x 30mm			
Wall plate	3	@	3.23	6.00	Treated Batten 25 x 30mm			

And it's automatically produced a complete cutting list from your joists and rafters to your tile nails too!



Step 4. Press print!

EstimatorXpress automatically writes up an impressive quote in Microsoft® Word - without you having to type a thing!

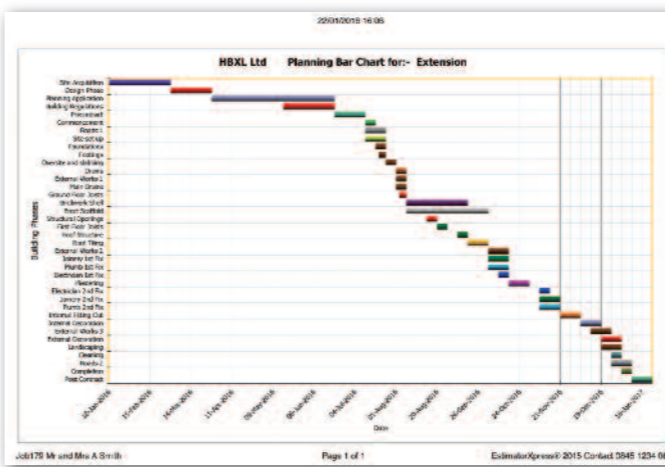
You can show as much or as little detail as you want with an option to put images on the quote, as shown here.

Really clever!



How does EstimatorXpress give me the edge?

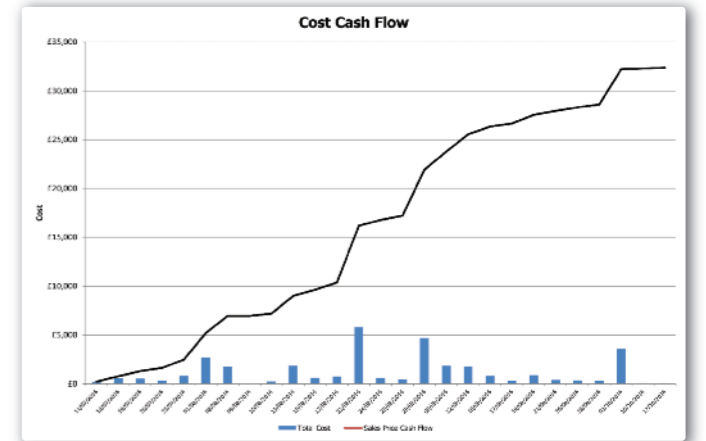
EstimatorXpress comes with over 80 automated reports including quotes, costings, schedules, profit forecasts and cash flow...



Build Phase	Resource	Item Costs	Wastage Costs	Total Costs
Brickwork Shell	Labour	£2,020.25	£0.00	£2,020.25
	Material	£3,129.73	£234.73	£3,364.46
Brickwork Shell Total		£5,149.98	£234.73	£5,384.71
Completion	Labour	£12.50	£0.00	£12.50
	Material	£0.00	£0.00	£0.00
Completion Total		£12.50	£0.00	£12.50
Drains	Labour	£846.61	£0.00	£846.61
	Material	£3,936.70	£295.25	£4,231.96
Drains Total	Labour	£809.67	£0.00	£809.67
	Material	£5,592.98	£295.25	£5,888.23
Electrician 1st Fix	Subcontractor	£300.00	£0.00	£300.00
	Material	£300.00	£0.00	£300.00
Electrician 1st Fix Total		£300.00	£0.00	£300.00
External Decoration	Labour	£33.50	£0.00	£33.50
	Material	£5.23	£0.39	£5.62
External Decoration Total		£38.73	£0.39	£39.12
Footings	Labour	£529.52	£0.00	£529.52
	Material	£572.52	£42.94	£615.46
Footings Total	Labour	£0.17	£0.00	£0.17
	Material	£1,102.21	£42.94	£1,145.15
Foundations	Labour	£561.85	£0.00	£561.85
	Material	£408.74	£30.66	£439.40
Foundations Total	Labour	£516.82	£0.00	£516.82
	Material	£1,487.41	£30.66	£1,518.07
Internal Decoration	Labour	£313.50	£0.00	£313.50
	Material	£56.90	£4.27	£61.17
Internal Decoration Total		£370.39	£4.27	£374.66

Build program

Get organised. Easily produce professional, full colour build programs with EstimatorXpress to ensure contractors are on site, on time, as well as impressing clients and the bank! Update your build program and all your reports will automatically be updated without you having to retype a thing!

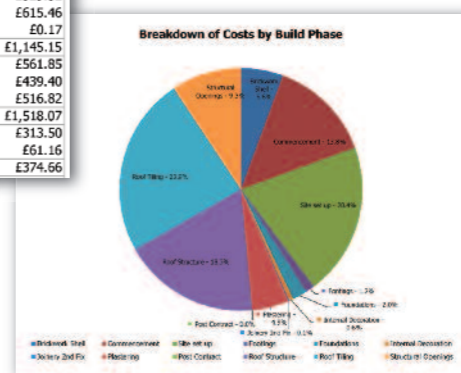


Cash flow chart

As you know, cash flow is king and critical to the success of any building business. Our cash flow reports allow you to control your finances and bank balance.

Costings

Detailed cost breakdowns show your costs precisely, so you know how they are incurred, helping you stick to budget!



Build Phase	Type	Description	Item Code	Quantity	Unit	Item Cost	Wastage Cost	Total Cost
Brickwork Shell	Material	Common Brick	100	1000	1000	100.00	0.00	100.00
		Header Brick	100	1000	1000	100.00	0.00	100.00
Brickwork Shell	Labour	Brickwork	100	1000	1000	100.00	0.00	100.00
		Brickwork	100	1000	1000	100.00	0.00	100.00
Foundations	Material	Concrete	100	1000	1000	100.00	0.00	100.00
		Reinforcement	100	1000	1000	100.00	0.00	100.00
Foundations	Labour	Foundations	100	1000	1000	100.00	0.00	100.00
		Foundations	100	1000	1000	100.00	0.00	100.00

Material and Labour schedules

They say that time is money. Use the automatically produced 'Just in Time' Material and Labour schedules to ensure you've got what you need on site, when you need it, to avoid costly delays to construction.

Due Date	Profit (Ex VAT)	Cumulative Profit
11/07/2016	£66.00	£66.00
18/07/2016	£168.55	£234.55
19/07/2016	£158.86	£393.41
20/07/2016	£98.50	£491.91
25/07/2016	£253.98	£745.89
01/08/2016	£816.67	£1,562.57
08/08/2016	£50.83	£1,613.40
09/08/2016	£0.05	£1,613.45
10/08/2016	£70.86	£1,684.31
15/08/2016	£590.03	£2,274.34
16/08/2016	£194.94	£2,469.28
17/08/2016	£227.41	£2,696.69
22/08/2016	£1,739.11	£4,435.80
24/08/2016	£178.01	£4,613.81
25/08/2016	£132.00	£4,745.81
29/08/2016	£1,414.31	£6,160.12
05/09/2016	£549.80	£6,709.92
12/09/2016	£532.29	£7,242.21
16/09/2016	£240.00	£7,482.21
17/09/2016	£90.00	£7,572.21
19/09/2016	£270.31	£7,842.52
21/09/2016	£18.58	£7,861.10
26/09/2016	£109.04	£7,970.14
28/09/2016	£90.00	£8,060.14
03/10/2016	£1,062.38	£9,122.52
10/10/2016	£20.04	£9,142.56
17/10/2016	£24.99	£9,167.55
Grand Total	£9,707.23	£9,707.23

PROFIT CHART

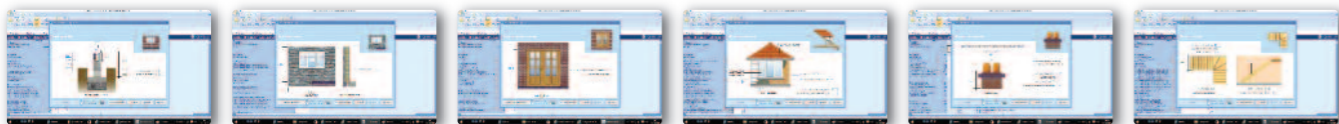
Use the clever, automatic profit analysis to see how much money you'll make on the job or project before you start!

Really clever!



What else can it do?

Hundreds of built-in calculators for different jobs mean you have the flexibility to estimate any domestic project from hanging a door to building a plot of houses! From foundations and footings, to the final lick of paint, EstimatorXpress will cost the lot – guiding you through every single phase of the job.



For more info, give us a call on 0845 1234 065 or 017 916 7898 or visit www.hbxl.co.uk



PlansXpress: Quickly and EASILY draw professional building plans, elevations and 3D models

It's easy and you have real control

Designed especially for general building works, PlansXpress is really straightforward to use helping you quickly and easily draw professional building plans and elevations! And we do mean easily! You don't need a degree in CAD software to start drawing!

Save fees and win more work

When competing with other builders for a job, PlansXpress can give you something extra to tip it in your favour. You'll be drawing your own architect quality plans to show off to customers AND you can submit planning applications in no time at all. You can also produce building regulation compliant working drawings including sections and notes, as well as 3D models and photo-realistic visualisations, using the 3D PhotoVisualiser plug-in. Think of it! Business winning 3D images, no more costly outsourcing – perhaps you can charge for your design services too!

CAD for all trades

PlansXpress can be used for all types of trades. Design houses, extensions, renovations, roofs, lofts, dormers or use to show room layouts, services and more.

PlansXpress can cater to any building need – lofts, extensions, new builds and more

PlansXpress is not just for new build. You can draft plans for extensions, loft conversions and renovation work or use it simply to create room layouts or place services and plumbing and electrics. Not to mention external works.

Automatic estimating from your plan

What makes PlansXpress such a clever piece of kit is its ability to help you produce a quote. Our unique X-Connex technology means that when you bring together PlansXpress and our estimating software, EstimatorXpress you can do clever things!

We call it Visual Estimating!

You can either draw your plan from scratch, or scan an existing printed plan or import a PDF, JPEG, DXF or DWG file and trace over the plan onscreen and apply all the necessary information on dimensions and materials.

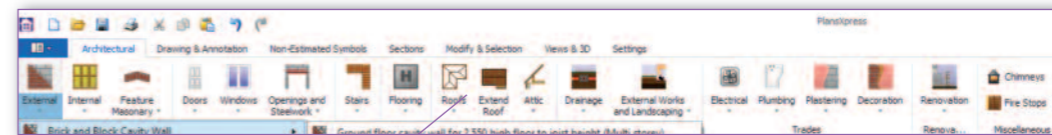
EstimatorXpress will take the data-rich plan and read all the dimensions and items on your plan and take off an instant estimate and quote. See pages 12 and 13, it's really clever!

Using our X-Connex™ connectivity combine with EstimatorXpress for 3D Visual Estimating. Simply trace an existing plan and take off an estimate in minutes. See pages 12 and 13.

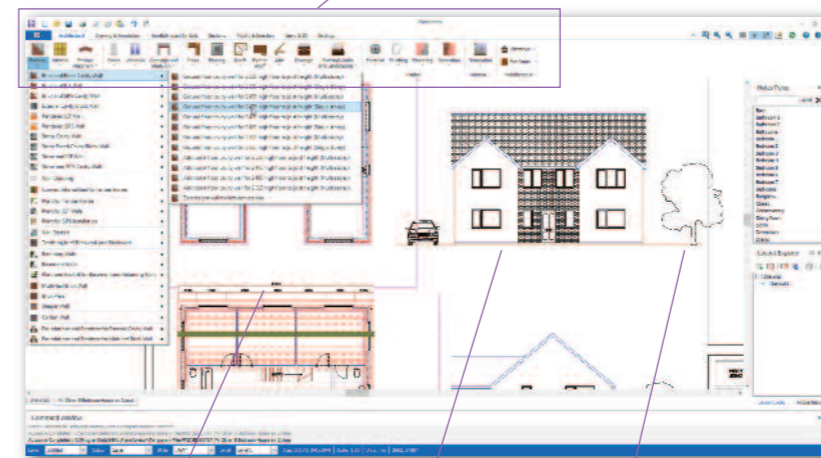


What is it that makes PlansXpress so easy?

Handy drawing tools specifically for construction



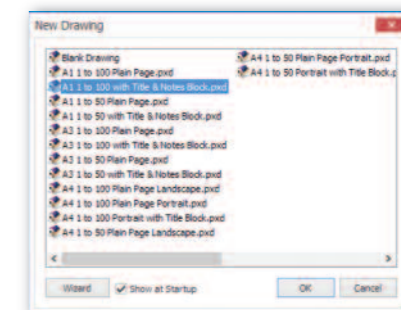
The wealth of construction drawing tools and architectural symbols it comes with out of the box means YOU can start drawing architect-quality drawings yourself.



Just one click to add dimensions to your plans. Automatically produces 2D elevations from your plans! Position your symbols and sections from our comprehensive library.

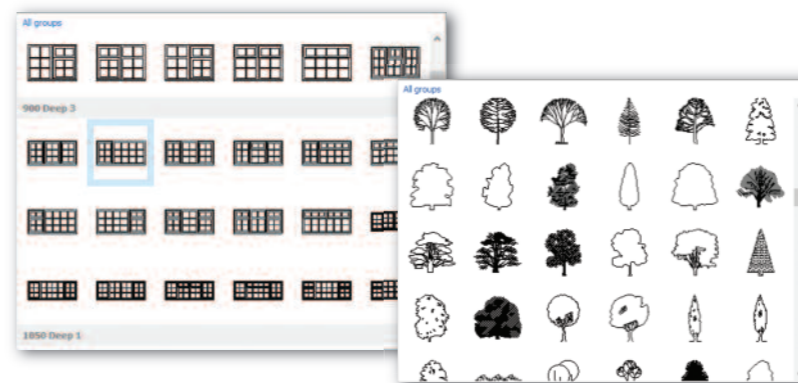
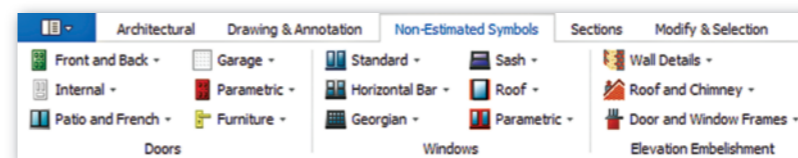
Pre-configured templates

Pick your template and scale to quickly set up your drawing and paper size.



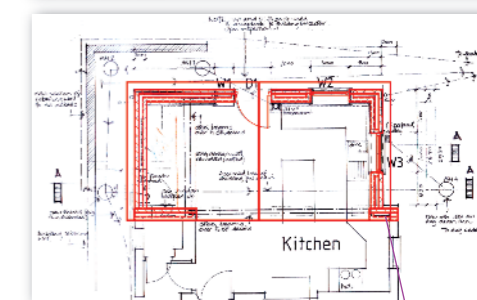
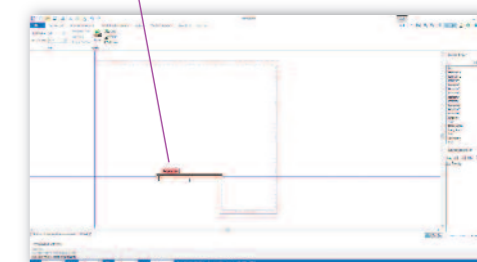
A big symbol library

Add doors and windows, stairs, electrics, plumbing, drainage, kitchens, bathrooms, furniture and landscaping etc.



Helpful construction lines

We give you construction lines to use as your guide to make sure your drawings are totally accurate.



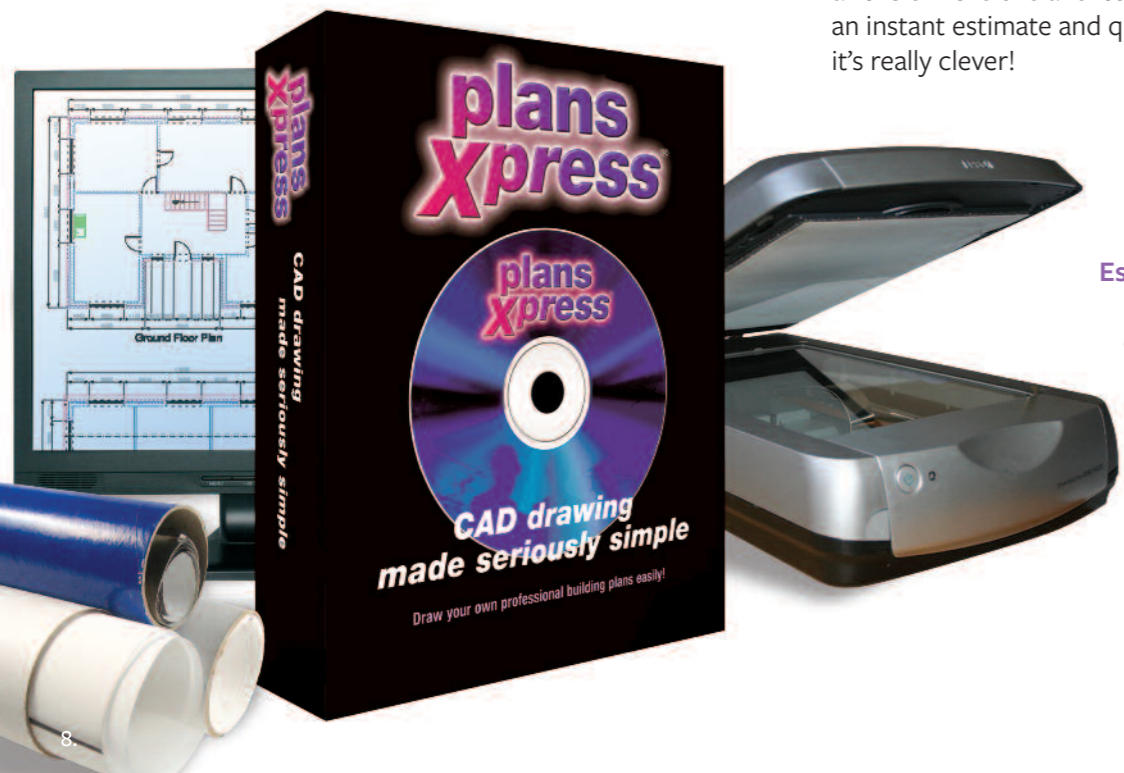
See website for system requirements.

PlansXpress enables you to work with existing plans. Simply import a file that you've been given or from a scan you've produced – and use the drawing tools to trace over the original drawing and make any changes. Combine with EstimatorXpress and you'll then be able to fully estimate entirely from the scan!

Really clever!

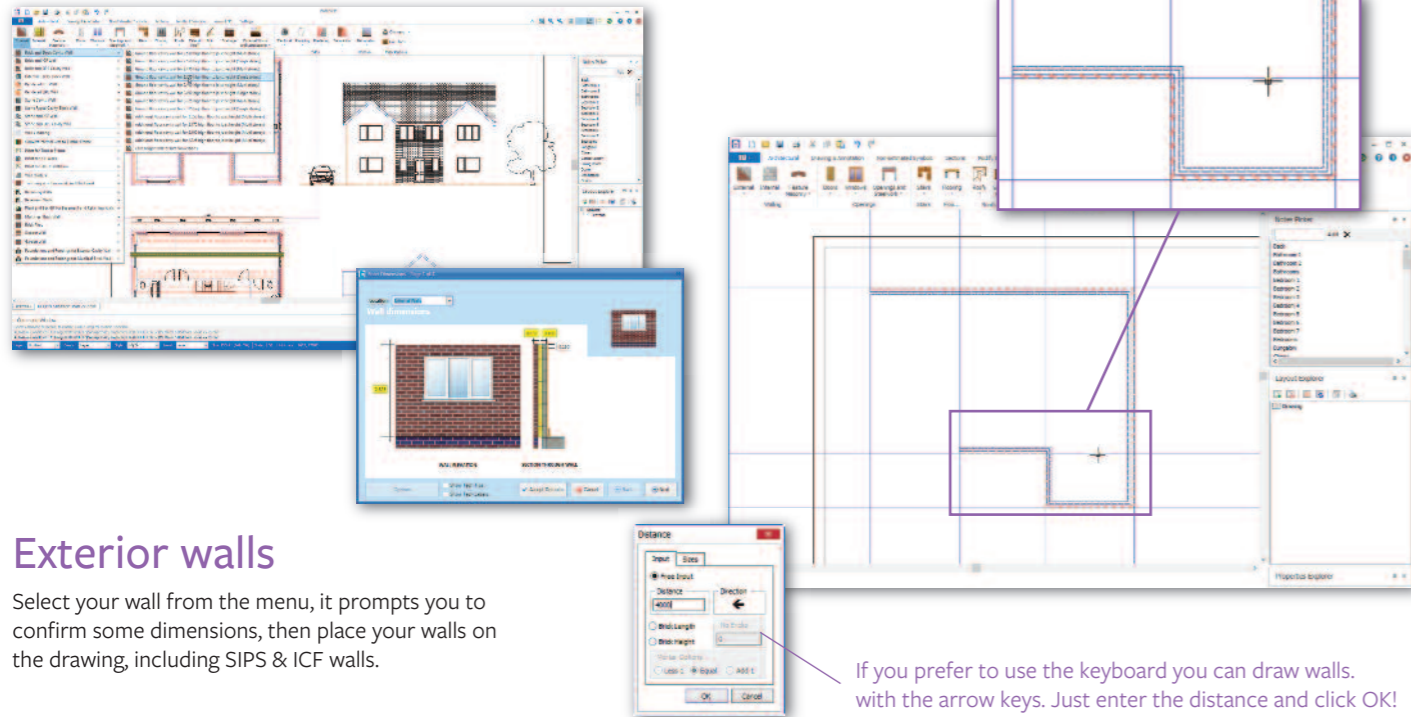


For more info, give us a call on 0845 1234 065 or 0117 916 7898 or visit www.hbxl.co.uk



How do I draw up my plans and elevations?

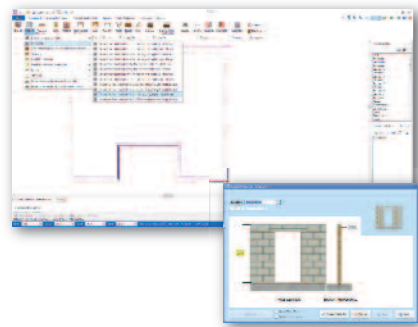
You don't need drawing skills - it's all click, click, drag and drop and your walls just snap into place. It's easy to learn. What's more it's just another click to add dimensions!



Exterior walls

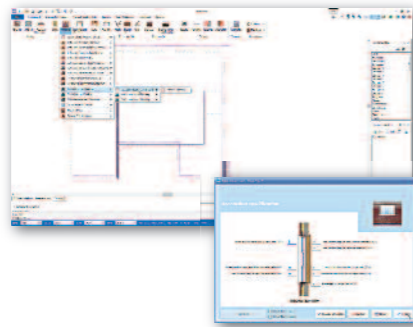
Select your wall from the menu, it prompts you to confirm some dimensions, then place your walls on the drawing, including SIPS & ICF walls.

If you prefer to use the keyboard you can draw walls with the arrow keys. Just enter the distance and click OK!



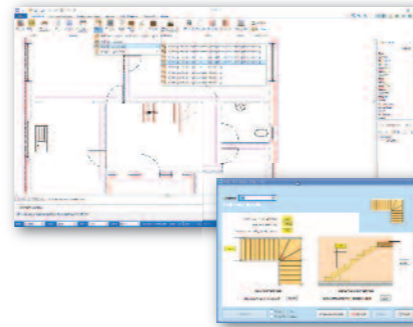
Interior walls

Internal walls are just as simple as drawing the external walls! Choose from the large range then place on the drawing, including SIPS & ICF walls.



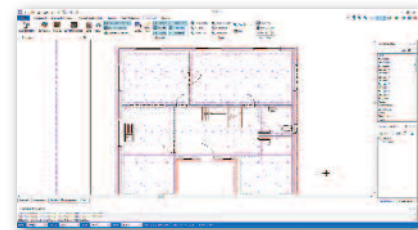
Windows & doors

Choose your windows and doors from the comprehensive library and place them on your walls. The software automatically slots them in.



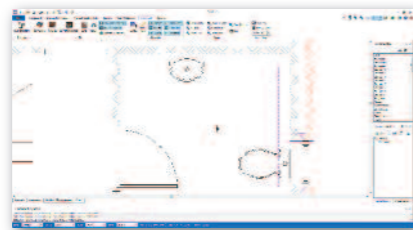
Stairs

Adding stairs couldn't be easier. Choose a pre-designed staircase from the menu and place on your plan in seconds.



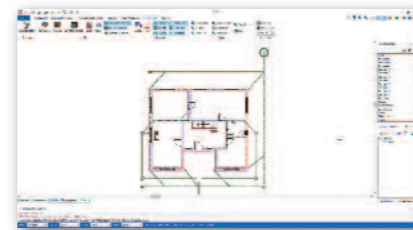
Floors & slabs

Select the type of floor from the menu and click around the corners of your walls to automatically draw the floors.



Plumbing & electrics

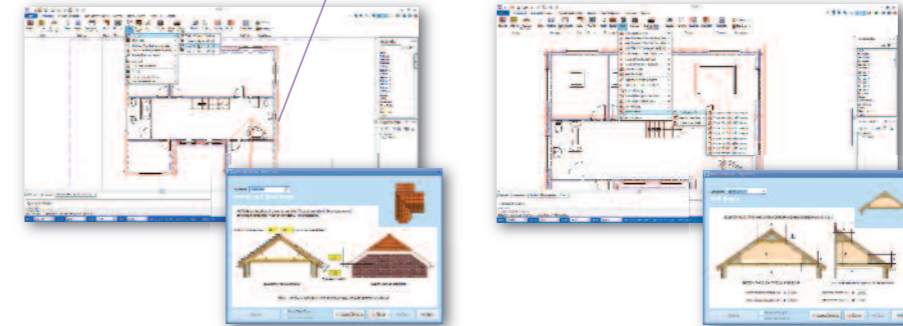
Add your plumbing and heating symbols from the extensive library as well as electrics, landscaping, furniture etc.



Drainage

You can also set out the drainage in no time... soil pipes, inspection chambers, manholes, drain runs and more.

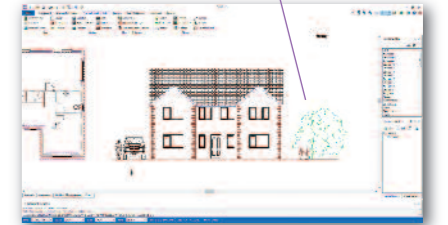
See how neatly the valley roof tees into the main roof. You can even add purlins, binders and drain pipes...



Roofing

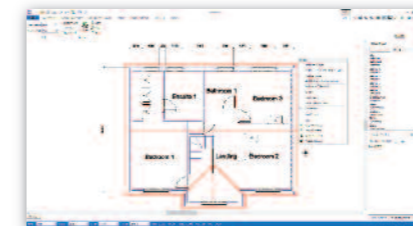
Select your roof from the menu and quickly customise. Choose from the 10+ roof styles, then click around the external supporting walls to place it, including SIPS roofs.

Add paths, patios, driveways, fencing and landscaping to create more realism to the drawing.



Lofts & renovations

Designing loft conversions, dormers and renovation work is simple too. Choose the relevant design tool, click onto the drawing and confirm details.



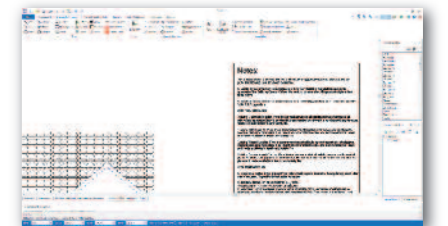
Click to show dimensions

Before printing, you can add dimensions with just one click!



Add sections

No need to draw your own! Just add sections from the library.



Add your notes

PlansXpress comes with a library of notes to add to your drawing ready for Building Regs. Better still, combine with EstimatorXpress to automatically generate notes for the specific drawing.

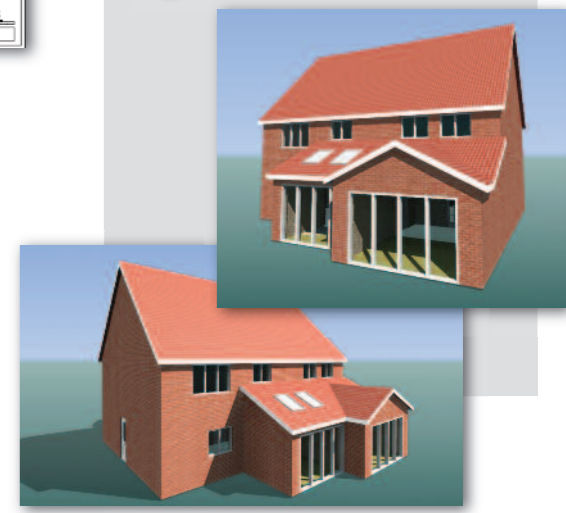
...and finally print

Print your working drawings in plan format or scale down for your office or home printer.



3D RENDERS

Plus get realistic photographic 3D rendering of your drawings with our 3D PhotoVisualiser plug-in. Available at an additional charge.



For more info, give us a call on 0845 1234 065 or 0117 916 7898 or visit www.hbxl.co.uk



3D Visual Estimating: Produce architect-quality plans and take off an estimate in minutes

The fastest way to estimate

Got two minutes? Well that's all the time it takes to price up a job, produce a schedule, Bill of Materials and more – straight off a plan using our groundbreaking 3D Visual Estimating software.

Think how many times you've wished you could get a take-off directly from the file given to you by your client or architect. Well now you can, thanks to the clever syncing of our two most popular products, EstimatorXpress and PlansXpress.

A powerful software duo for the busy builder

Imagine this scenario. Your client has plans from an architect – they want you to price the job but they want to make some adjustments. With 3D Visual Estimating you can do exactly what they want. Scan the plan, then once onscreen use speedy drag and drop tools to trace and make all the changes they need. Once you're finished simply export your PlansXpress plan into EstimatorXpress for a detailed estimate – in minutes.

Draft your own plans and price them almost instantly - a design and build dream

And another scenario; a client comes to you with a sketch of their dream project and they want you to price it up and get them through planning. You can draw the plans, without any previous CAD experience, because we've designed the software for CAD novices. It's even building you a 3D model as you go – super impressive! The software has all the tools you need to make drawing quality plans easy and fast. And then you price it in no time. The result? Everything you need to win the work – done and dusted in one hit.

Unique business-winning software

Our unique X-Connex technology means that as you are drawing your plans or tracing over existing ones, using the simple PlansXpress drawing tools, you are specifying the resources needed and taking off the dimensions at the same time. Having done this, you can then simply watch the plan become an estimate in EstimatorXpress before your eyes.

You only need input the details of the project once. In fact, it's not just a program that can improve your job win-rate by 230%, but a building revolution that will increase your efficiency and improve your profitability.

Using our X-Connex™ connectivity combine PlansXpress with EstimatorXpress for 3D Visual Estimating. Simply trace an existing plan and take off an estimate in minutes.

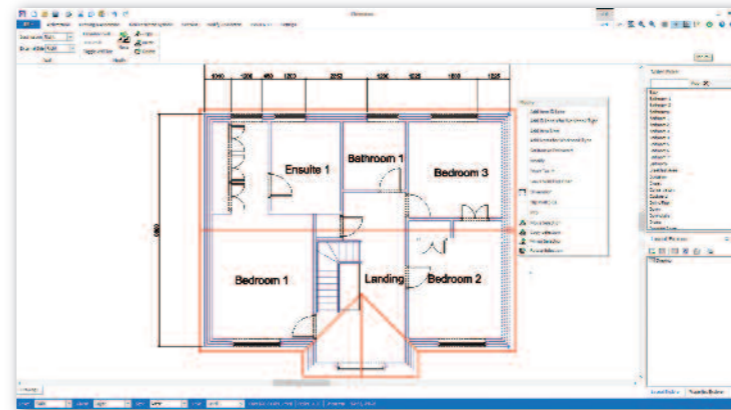


How do I produce an estimate direct from a drawing?

Here are three basic stages involved in producing an estimate using EstimatorXpress, from a plan imported into PlansXpress or a plan produced from scratch. With these two software packages you have 3D Visual Estimating and your business has become a force to be reckoned with!

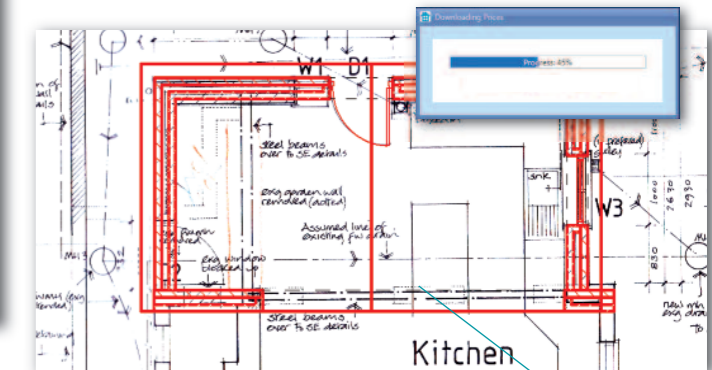
Step 1. Either draw from scratch

Use the drag and drop tools in PlansXpress to draw your plan. Designed for builders and not CAD pros, the software takes you through the drawing step by step. [See pages 8 to 11](#)



Or import or scan a plan and trace

Scan a set of existing printed plans or import a PDF, DWG, DXF CAD file, scaled JPEG or BMP file into PlansXpress. Once the plan is onscreen you can either add an extension for instance, using the PlansXpress drawing tools. Or if the plan is ready for estimating, simply trace over the area that you want to cost, again using the same drawing tools.

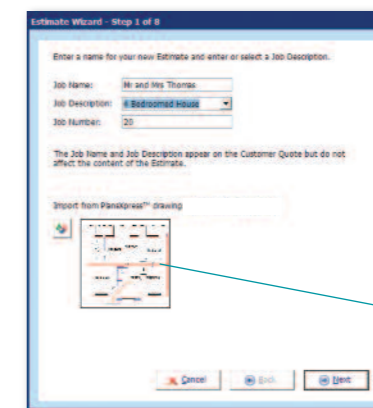


Step 2. Import the now data-rich plan into EstimatorXpress

Import the fully specified plan or tracing into EstimatorXpress and watch it cost the lot. [See pages 4 to 7](#)

Our X-Connex technology enables the super-clever calculators in EstimatorXpress to turn the data from the plan into quantities and costings.

Really clever!



As you draw or trace over an existing plan you are actually specifying what is being built.

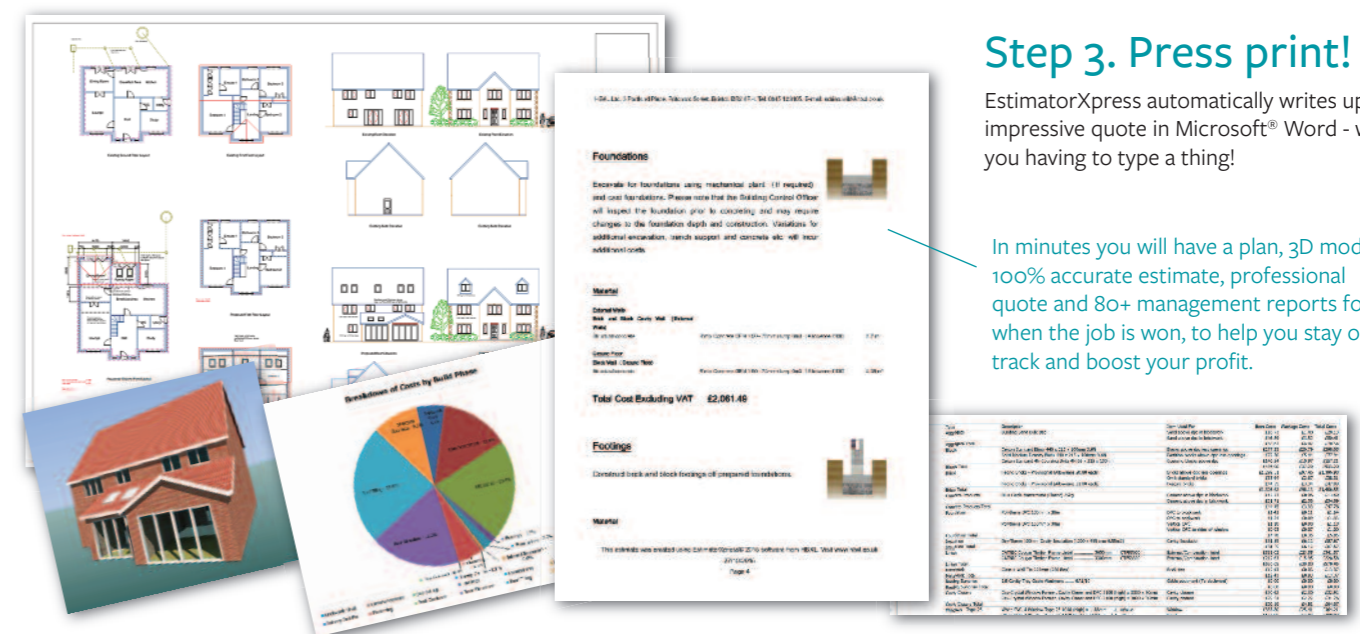


Select your drawing and import it here.

Step 3. Press print!

EstimatorXpress automatically writes up an impressive quote in Microsoft® Word - without you having to type a thing!

In minutes you will have a plan, 3D model, 100% accurate estimate, professional quote and 80+ management reports for when the job is won, to help you stay on track and boost your profit.



For more info, give us a call on 0845 1234 065 or 0117 916 7898 or visit www.hbxi.co.uk



Health & Safety Xpert: Helps you comply with CDM 2015 and takes the pain out of essential paperwork

The law applies to everyone

All building firms, no matter how small, have a duty of care to their employees and the general public. As far as reasonably possible, you must safeguard the health, safety and welfare at work of all on your site. That's the law.

Non-compliance can result in financial loss in the form of fines, Fees for Intervention, compensation in litigation cases (brought about by the public, employees or even ex-employees), plus site shut-downs or even a prison sentence.

These days customers and main contractors also want to see evidence of your health and safety standards even before you've won the job, so make sure you don't miss out on work by not having your paperwork in place.

Follow industry standards

Health & Safety Xpert is CDM 2015 compliant and CHAS compatible so you have all the right paperwork and information on hand to make sure you're following HSE regulations. After all, if it's not written down how can you prove you're doing it? It also comes with a handy guide (in plain English) detailing the regulations and documents you need to produce.

We do the hard work for you

It's just so easy, cutting down the time it would normally take by hand and at a fraction of the cost of a health and safety consultant. And MASSIVELY cheaper than an HSE fine! Plus, if you have EstimatorXpress, it'll use X-Connex technology to take off the information straight from your estimate and produce your paperwork automatically.

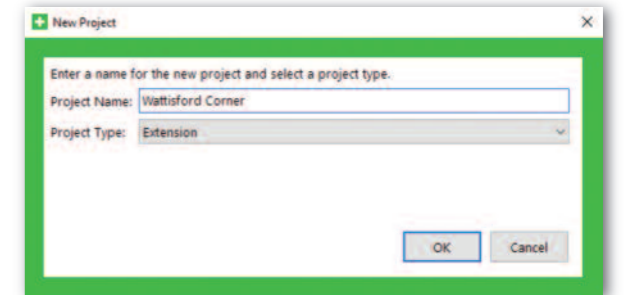
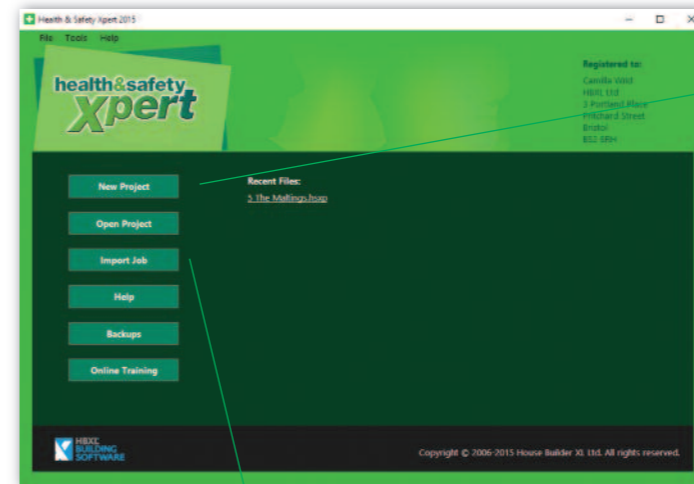
Added to which, thanks to 'HBXL Support & Updates' you're kept up-to-date with any changes in legislation – so you need never worry again about being behind the times!

Just how much of the work does it do for me?

Simply tell Health & Safety Xpert what you are building and it does the rest! Producing your health and safety paperwork is just so easy, dramatically cutting down the time it would normally take by hand! Of course you still need to act on the health and safety recommendations on site!

Step 1. Select the job

The New Project Wizard will guide you through the creation of all your health and safety paperwork. Just give the project a name and select the type of work you're doing.

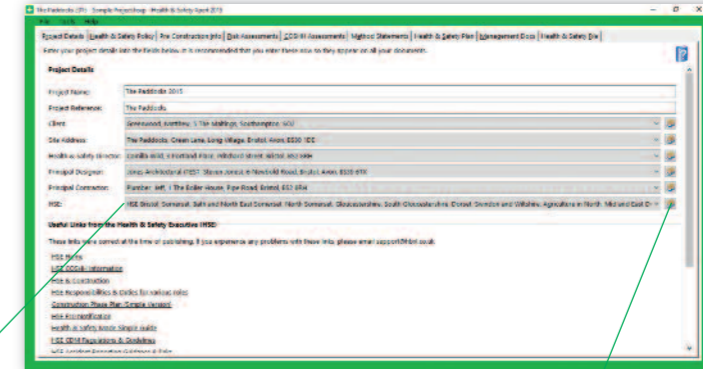


Even quicker!

Import your EstimatorXpress job into Health & Safety Xpert and it will automatically author all the relevant paperwork in seconds!



Comes populated with HSE, Local Authority, and Environment agency addresses...so you don't have to start from scratch each time!



Built-in address book which can synchronise with Microsoft Outlook™

Step 2. Give some details

Simply key in your client, the site address and how many people will be on site and you're ready to review all your documents. THEN PRESS PRINT!

CDM 2015 Regs compliant AND CHAS compatible

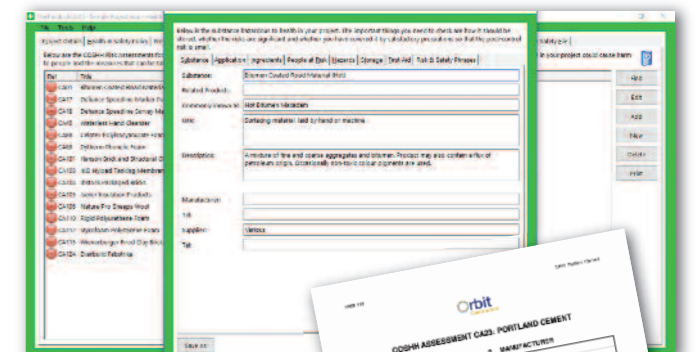
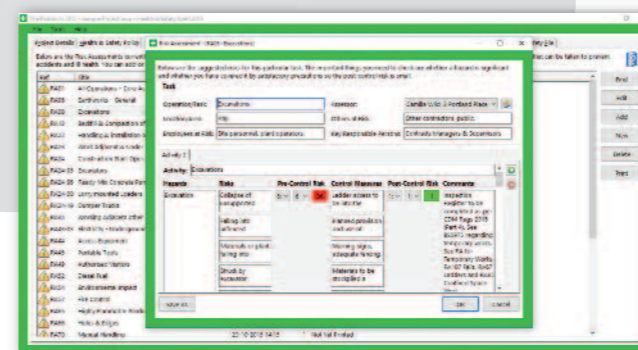
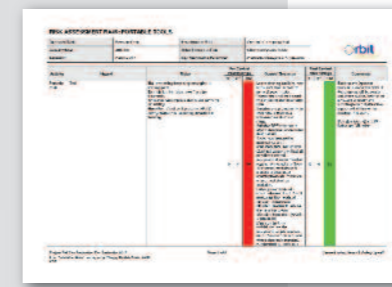
Use X-Connex™ connectivity to import an EstimatorXpress project into Health & Safety Xpert. With a click of a button the file will be analysed in order to select the relevant documents specific to the project, along with your client's details and site address. Then all you do is press print!



See website for system requirements.

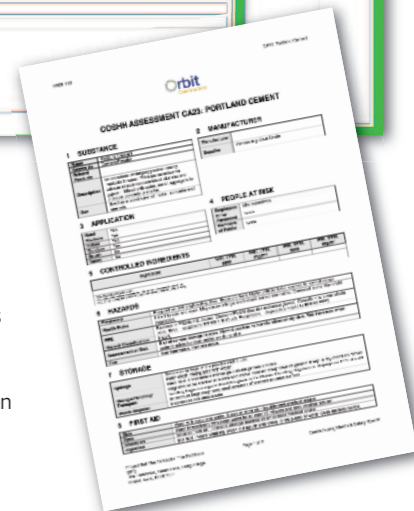
Risk Assessments

The software selects all the Risk Assessments you need for the job. Quickly review then print! No typing required! Or you can create your own.



COSHH Assessments

All the COSHH Assessments you might need for the hazardous substances on your building site. Or you can create your own.



For more info, give us a call on 0845 1234 065 or 017 916 7898 or visit www.hbxl.co.uk

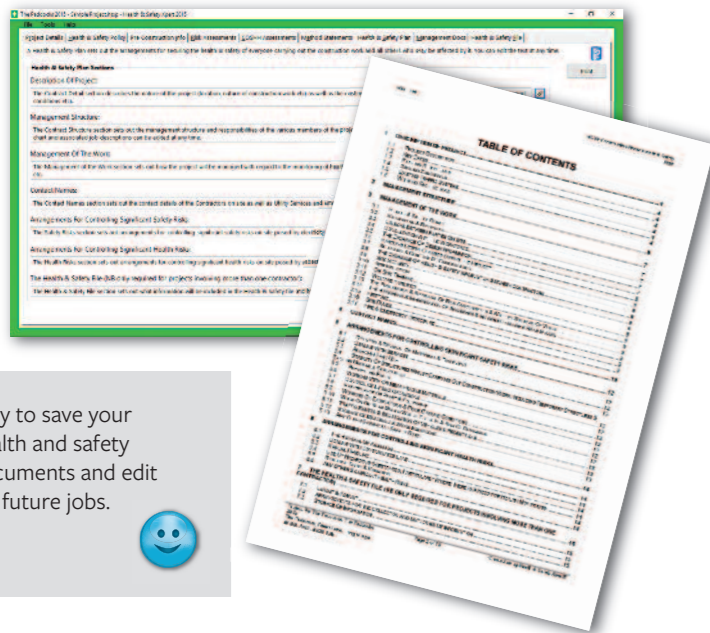


What other documents does Health & Safety Xpert produce?

Under CDM 2015 every building project needs a Construction Phase Health & Safety Plan and it's a client's legal responsibility to ensure construction work does not take place until the Principal Contractor has prepared a satisfactory plan. Health & Safety Xpert helps you produce this important document in minutes with guidance notes for you to enter site specific details.

Construction phase plan

The plan sets out your arrangements for ensuring the health & safety of everyone on site for each individual project. Health & Safety Xpert helps you produce this important document in minutes, providing you with guidance notes for you to enter site specific details. Review then print.

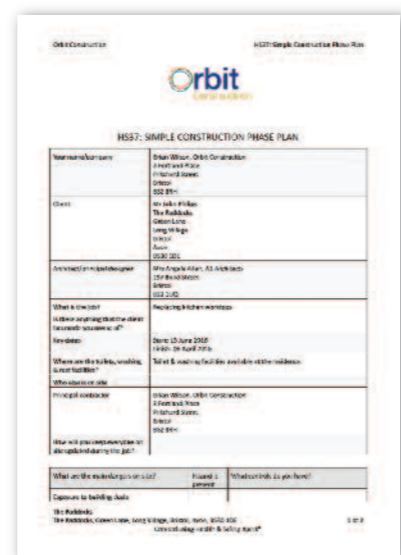


Easy to save your health and safety documents and edit for future jobs.



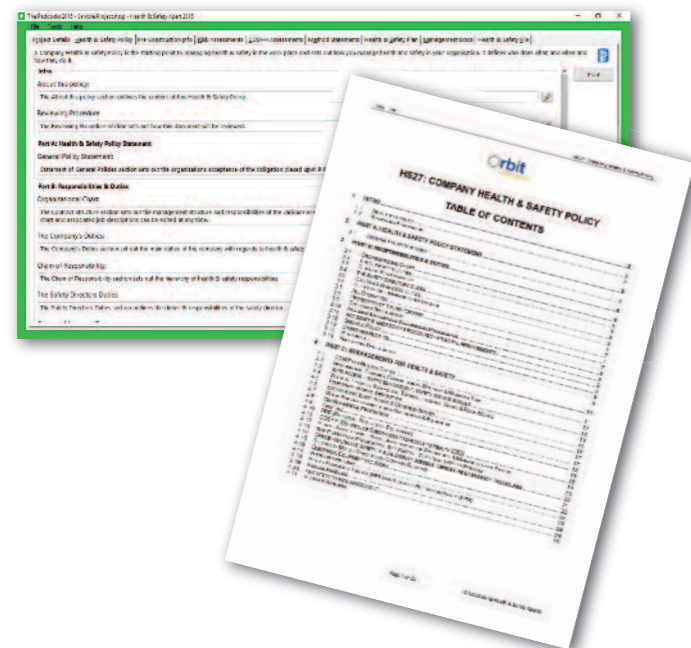
Simple Construction phase plan

When you're doing small-scale routine work, such as installing a bathroom or replacing a boiler, then a simple plan is usually sufficient. Health & Safety Xpert helps you produce this alternative document in minutes. Anything larger, and we'd recommend the full plan.



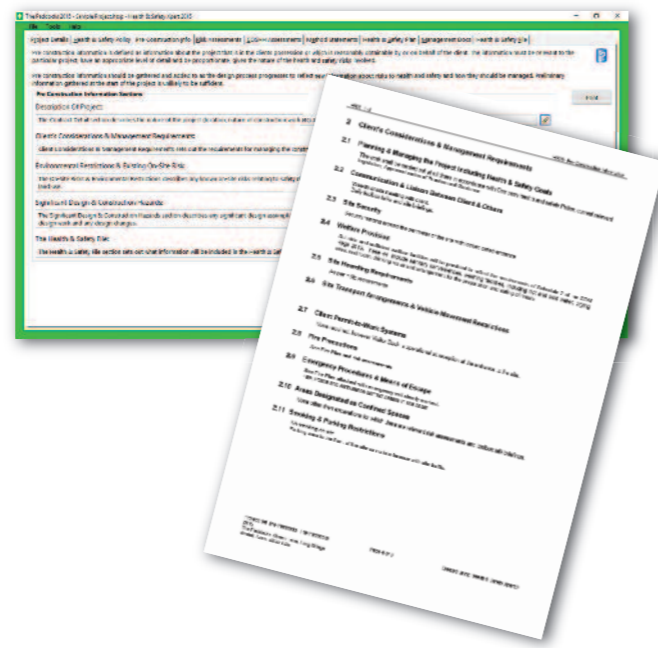
Company policy

Health & Safety Xpert also produces a comprehensive health and safety policy for your company – with no typing required! Just click print. This critical document defines your company's approach to health and safety, who does what and how they do it. Any firm with 5 or more employees needs to produce one.



Pre-construction info

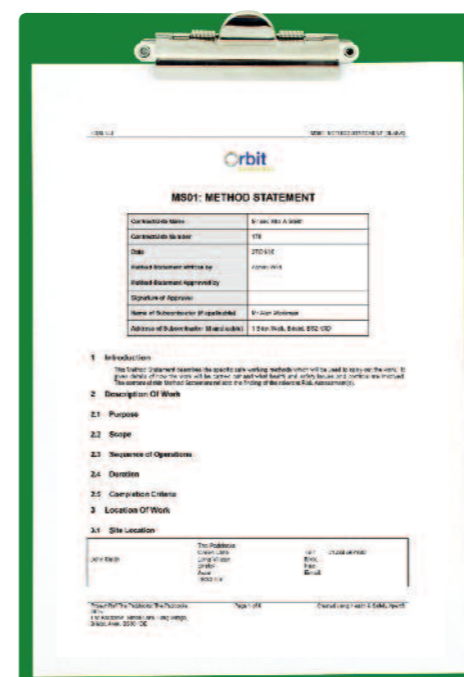
This document should be prepared by the Principal Designer for handover to the Principal Contractor so that they are fully aware of the project's health and safety requirements before construction.



It doesn't matter how small your company is - this is critical stuff! According to the Health & Safety at Work Act 1974 and Management of Health & Safety at Work Regulations 1999, both Risk and COSHH assessments are a legal requirement if you have 4 or more tradesmen or contractors on site. These extremely practical documents help you properly identify the risks on site and the steps that you can take to avoid them.

Method Statements

Method Statements must be completed when there are unforeseen, unplanned or specialist activities on site which are not covered by relevant risk assessments. Health & Safety Xpert will give you samples and guide you through writing them.



Site inspections

The Site Inspection will help you to carry out regular inspections of your sites to ensure high standards are maintained on site throughout the project.

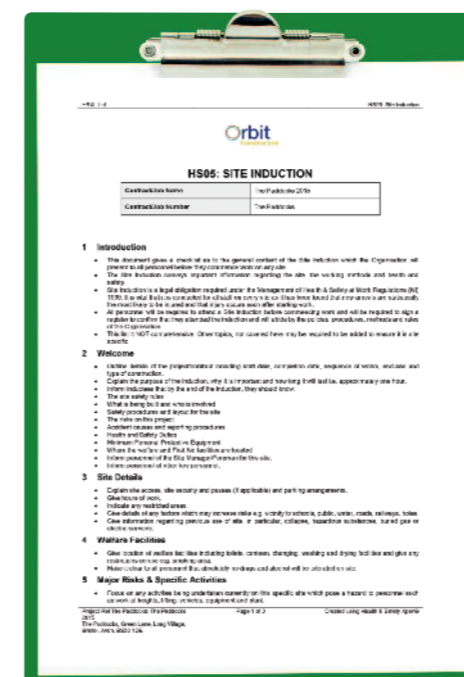
CDM 2015 and other health and safety laws oblige you to adopt a policy of accident prevention through the use of safe systems of work and inspections as well as ensuring the competency of the tradesmen you hire. Non-compliance can mean massive fines, site shut down or worse - a prison sentence. Health & Safety Xpert takes the pain away!

Really clever!



Site inductions

Under health and safety regulations an employer has a duty of care to its employees. Use the Site Induction included with Health & Safety Xpert as a guide for carrying out a thorough and adequate induction of all site personnel before they commence work.

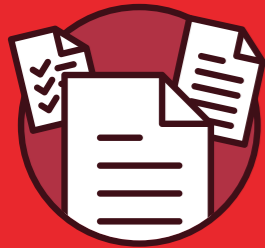


Including...

- Health & Safety Xpert documentation:
- Company Health & Safety Policy
- Risk Assessments
- COSHH Assessments
- Acknowledgement of Risk Assessments
- COSHH Cover Sheet
- Contractor Questionnaire
- Accident & Incident Record
- Accident & Incident Investigation Form
- PPE Register
- Toolbox Talks Register
- Toolbox Talks Training Record
- Pre-Construction Information Pack
- Construction Phase Health & Safety Plan
- Short Construction Phase Plan
- Plant Inspection Record
- Site Set Up Checklist
- Site Rules
- Site Induction
- Site Induction Register
- Site Attendance Register
- Fire Plan
- Noise Assessment
- Health & Safety Audit
- Site Inspection
- Permit to Work Electricals
- Permit to Work Excavations
- Permit to Work Asbestos
- Permit to Work Confined Spaces
- Permit to Work at Heights
- Hot Works Permit
- Permit Register
- Excavation Pre-Works Inspection
- Excavation Inspection Record
- Scaffolding Handover Certificate
- Harness Inspection Record
- Lifting Equipment Inspection Record.

Documents are CDM 2015 COMPLIANT

For more info, give us a call on 0845 1234 065 or 0117 916 7898 or visit www.hbxl.co.uk



ContractsXpert: Helps ensure you get paid on time and are legally covered

Top quality building contracts for the trade

HBXL understand the importance of making sure you're legally covered. We've teamed up with a legal expert to produce a Small Works Business-to-Business and Consumer Contract, as well as a Subcontract Contract.

The contracts include an introductory letter to cover the finer details, a 'Notice of the Right to Cancel', a 'Start Work Now Form', a 'Changing Work Form' and Cancellation Forms.

We've also included all relevant CDM 2015 regulations and you can even choose whether you want to be paid by Build Phase, milestone or every 'x' days so both you and your customer feel secure in knowing who is responsible for what.

Contracts that protect everyone

Consumer organisations now encourage homeowners to be wary of any builder who is unwilling to enter into a contract - with ContractsXpert you can instil your customer with confidence. You'll stand a greater chance of winning the work, being paid on time and being covered for all the work you've done.

We do the hard work for you

A user-friendly software package, ContractsXpert requires very little input from you. In fact, if you use X-Connex to take off project data from EstimatorXpress it will make it quicker still!

Easy to use - easy to understand

Here at HBXL we've packed bags of information into our practical contracts and made sure they're more comprehensive than ever. Let us keep you safe, not sorry.

Use X-Connex™ connectivity to import an EstimatorXpress project into ContractsXpert. With a click of a button it will automatically author all the relevant paperwork in a matter of seconds. Then all you do is press print!



See website for system requirements.

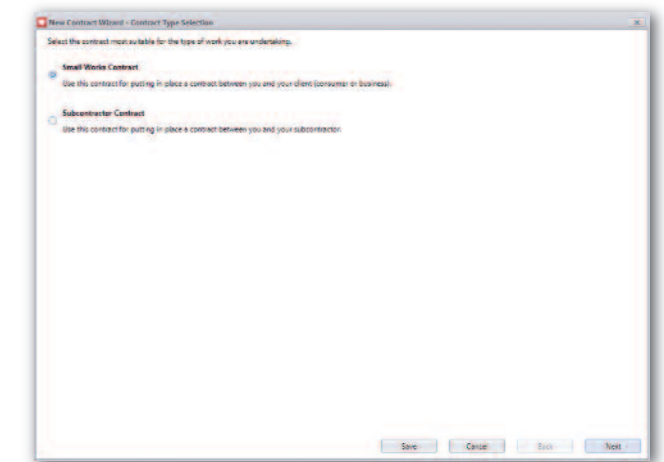
Complies with Doorstep Selling Regulations

So how easy is it to use ContractsXpert?



Step 1. Choose your contract

Select the most suitable contract and enter your project details quickly and easily.



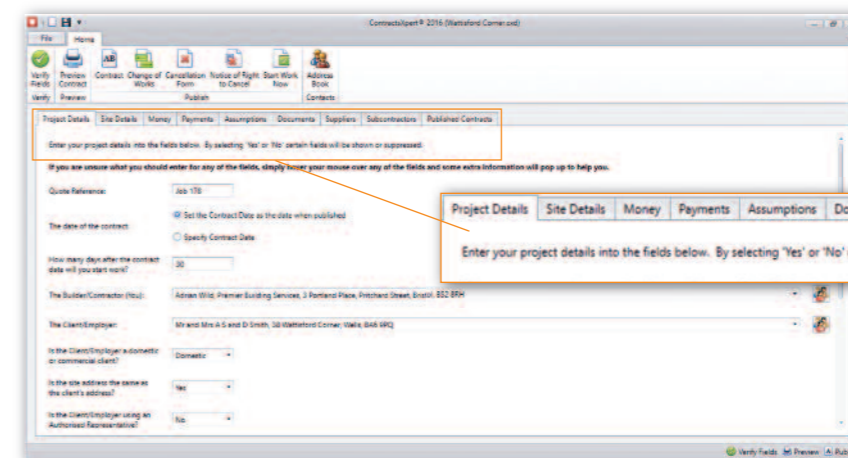
Even quicker!

Import your EstimatorXpress job into ContractsXpert and it will automatically author all the relevant paperwork in seconds!



Easy to create new contracts using the step-by-step wizard.

Easily manage your project. Track agreed changes to the work in your contract as the project progresses. Archive your contracts for future reference.



Step 2. Review

Once all the project details have been entered, quickly review and enter any fields as required.

Includes a Notice of the right to cancel document - essential in order to comply with Door Step Selling Regulations.

Really clever!

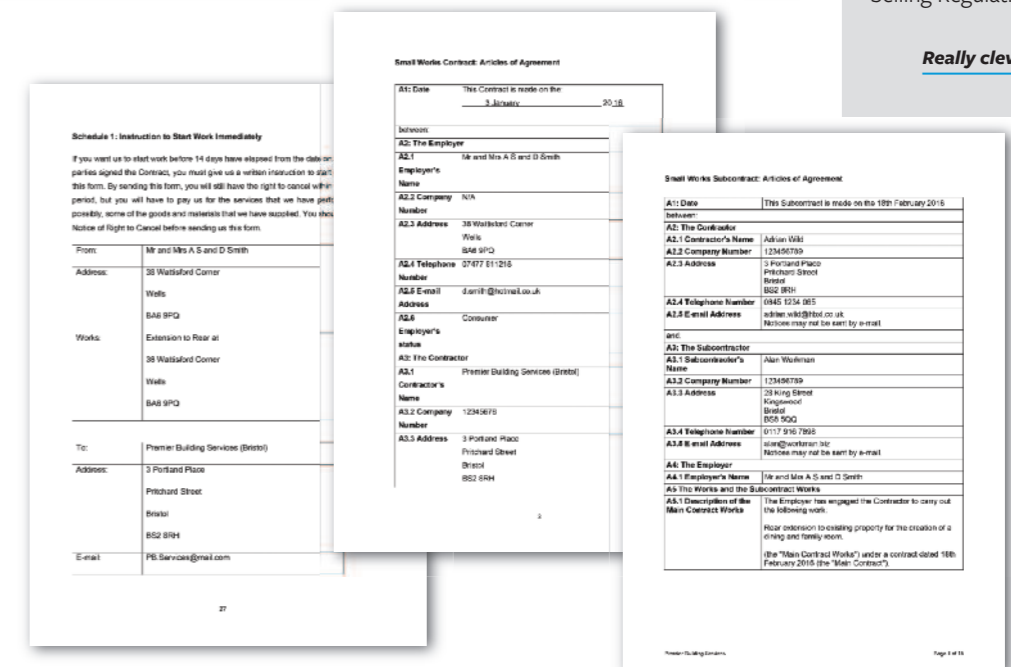


The software's built-in knowledge base writes the contract for you.



Step 3. Print!

That's all there is to it! Then print your comprehensive, easy to follow contract.



For more info, give us a call on 0845 1234 065 or 0117 916 7898 or visit www.hbxl.co.uk



ProjectXpert: Makes sure every project runs smoothly, on time and on budget

Project planning for building firms

ProjectXpert is aimed full square at building firms of all sizes. It's not just the big players who have to juggle multiple jobs. Maybe you have several extensions on the go at once? Maybe you do lots of small insurance jobs? Maybe you're managing a 10 house site? For any project or projects you want to manage more efficiently ProjectXpert puts you back in control.

Being tailor-made for the industry, ProjectXpert thinks the way you do. Simply list out the tasks, their likely durations when they start, when they'll finish and if anything has to finish before another phase can start. On top of which rather than simply listing costs like generic project management software would, it allows you to split the costs allocated to each phase into materials, labour and plant. It also has lots of functions specific to builders and will produce graphs and histograms to assist with cash flow management throughout the job.

Perfect combination

You can use ProjectXpert in tandem with EstimatorXpress allowing you to import your EstimatorXpress Gantt chart into it including all labour, material and plant costs. As you make amends on the job then export back to EstimatorXpress to reschedule all your deliveries and management reports.

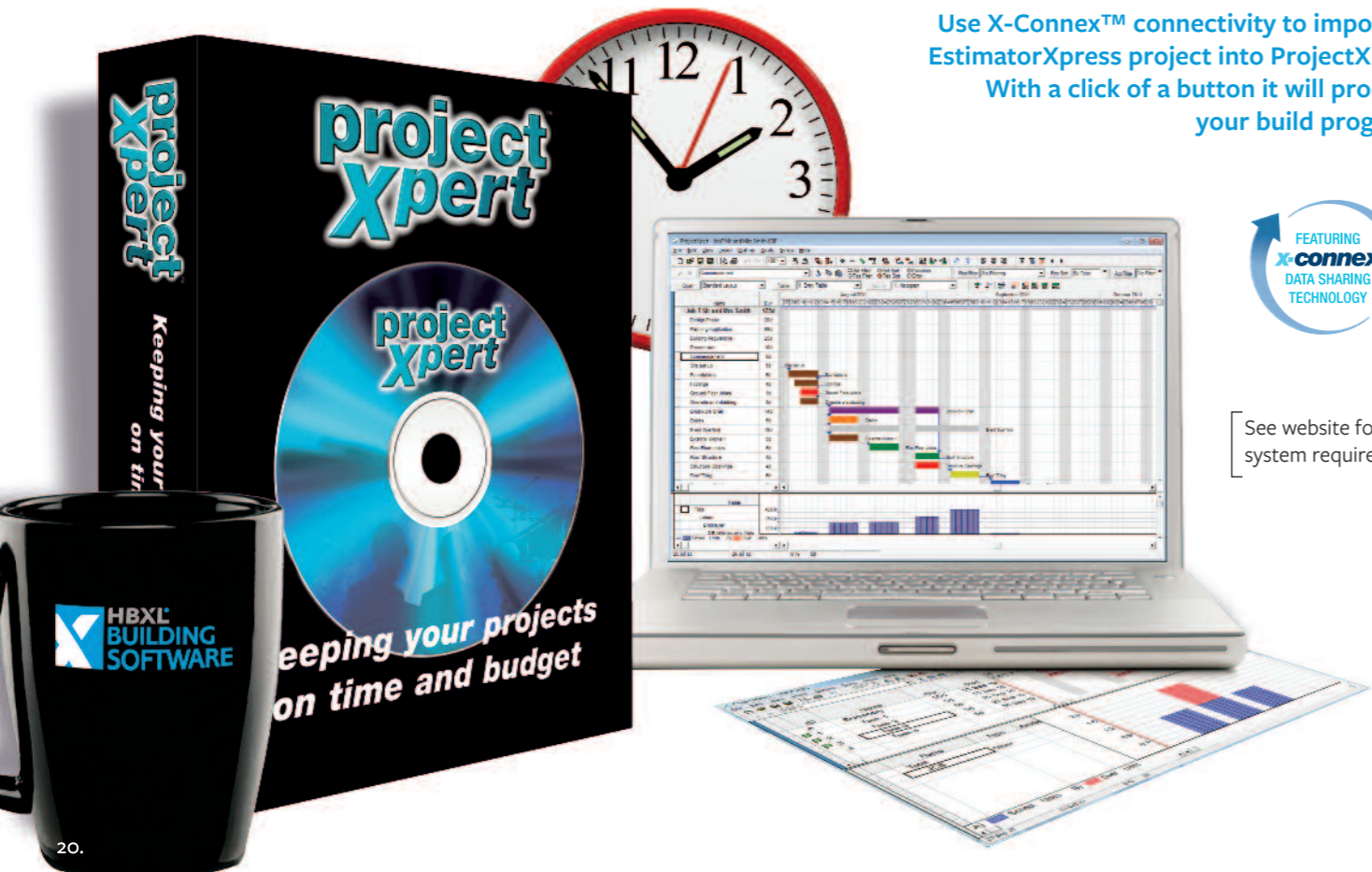
Ultimate efficiency from your projects

You might think that your spreadsheet and word processing systems are man enough for your requirements, but are they as profitable as they could be? Imagine being able to merge all the jobs you have on the go and see whether you can better utilise your labour, how your material is being distributed, where your equipment is on any one day. And how helpful would it be to email from the software to colleagues, sub-contractors and clients? Or see the impact of changes on the program to completion? Read on!

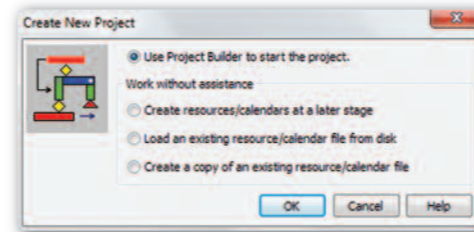
Use X-Connex™ connectivity to import an EstimatorXpress project into ProjectXpert. With a click of a button it will produce your build program.



See website for system requirements.

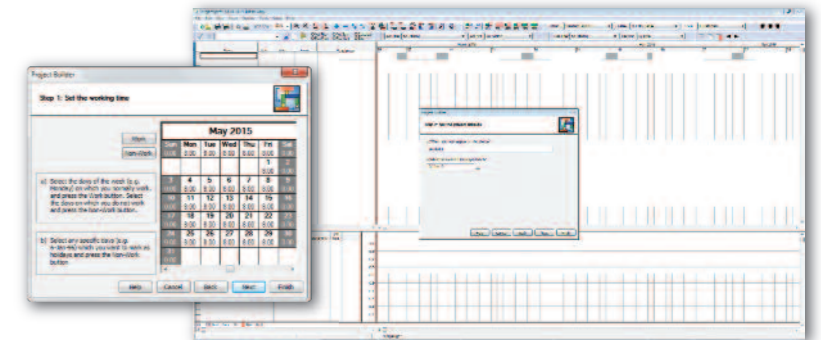


So I can track tasks, finances AND amends?



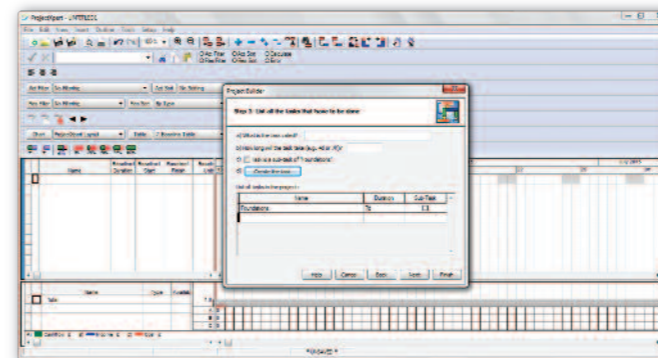
Step 1 and 2. Set up your Calendar & Project

It's easy to create a new project using the Project Builder. Enter your project details quickly and simply, giving your project a title, start date and tell it your hours of work e.g. 8am-5pm / 24/7 call out service or when you can't get access to site.



Even quicker still!

Import your EstimatorXpress job into ProjectXpert and it will automatically create your build program in seconds! It also imports all your resource and cost information to make Step 4 a doddle!

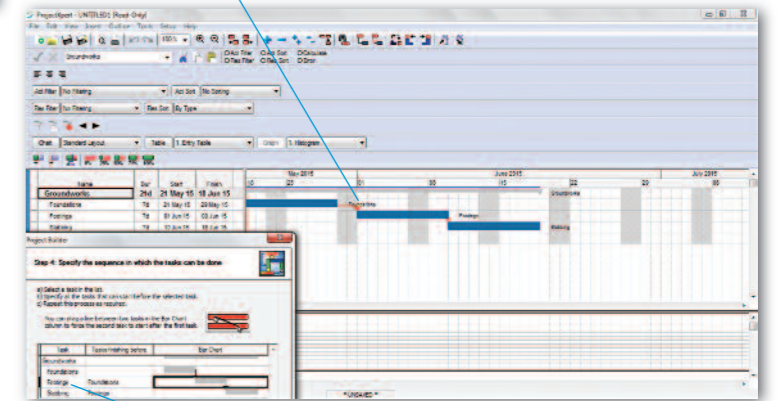


Step 3. Create tasks

ProjectXpert will build the chart as you go.

It's really quick! All you do is list the tasks that need to be carried out by entering them into the activity spreadsheet giving each a description, duration and start date.

You can define the dependencies between the phases to build your Critical Path to define the order in which tasks must occur.



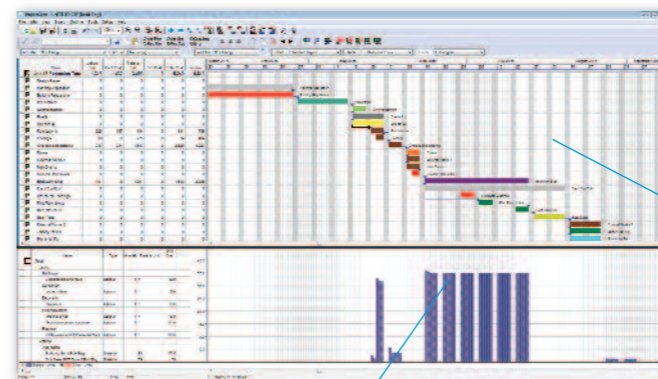
Happy with your build program? Store a baseline to provide you with a snap shot of what things should have been happening and when, versus any changes later made to the program. It will show as 'built versus program'.



Step 4. Assign resources and estimated costs

To use the software to the max, assign resources (such as materials, labour or plant) to each individual task and ProjectXpert will then give you charts to see where resources are over or under-allocated.

Note you can have sub phases too to indicate that these need to be completed in order for the main task to be completed.



Step 5. Print!

Keep everyone in the loop and improve communication between you and your contractors, your customers and not to mention the bank manager! Print multi-page/wall chart or copy to clipboard to be sent by email.

Text and graphic annotations can be placed anywhere on barchart/histogram.

You can also export your reports in to Microsoft Excel® and various accounting software packages for ultra flexibility!



Add payment dates to show the customer what they need to pay and when.

For more info, give us a call on 0845 1234 065 or 017 916 7898 or visit www.hbxl.co.uk



Our mission is to support you with help and advice every step of the way

We promise...

1. You'll get to speak to a human being in the UK - and if you call us out of hours our help team will phone you back first thing in the morning.
2. You can also speak to us by our website Live Chat service or email - whichever suits you. Responses are provided by a person - not a computer!
3. You'll get our knowledge and enthusiasm. Our team know the software back to front and have all been highly trained PLUS we have dedicated product specialists.
4. We're here to help. Ever practical we use gadgets like Logmein® which means we can log into your computer should you experience any difficulties. We hope you won't but if you do, we'll be onto it pronto so you're back up and running in no time!
5. We'll invest a minimum 25% of turnover back in to R&D to bring you the very latest software solutions and supply valuable printed, online or in-built tutorials with our software as standard. No cost cutting here!



Plenty of phone and online support

We call our support team super heroes because they are dedicated to serving builders day-in-day-out. Whatever the software issue they're there ensuring you grow in confidence and that you make the most of your software.



Helpful user-friendly guides

Support from day one. Invaluable resources written in plain English and with screen shots and diagrams, you'll soon be powering through your workload.

Straight-talking how-to-videos

We've created a catalogue of 'how-to videos' that cover the essential skills you'll need to learn to utilise your software to its full effect.



All combinations of training and remote learning

Online training, group training sessions UK wide, face-to-face training in your home or workplace - we can help you make the most of your software.

Regular evening webinars

Every month we hold a webinar to offer software demonstrations, tutorials and a Q&A session to help with any issues you might have with your new software.



Answers to all the FAQs

We're always happy to do some trouble-shooting and provide answers to typical questions, along with step-by-step guides to common concerns on the website.

What you get now and in the future

Your new software comes with a Support & Updates package that's free of charge in year one. This includes a user guide, unlimited telephone back-up, free internet tutorial videos, Knowledgebase and software updates. These updates happen regularly as we make software improvements or respond to changes in legislation. Renewing your Support & Updates year on year ensures you have the latest version and ongoing support and advice.



Get started now with a complimentary 14 day trial or book a no-obligation demo now





Our website is packed with information, samples, videos and case studies, along with a full calendar of events and webinars you can sign up for – plus instant ways to arrange a complimentary 14 day trial or no-obligation online demo. So visit www.hbxl.co.uk today!

We're ready to help 😊

