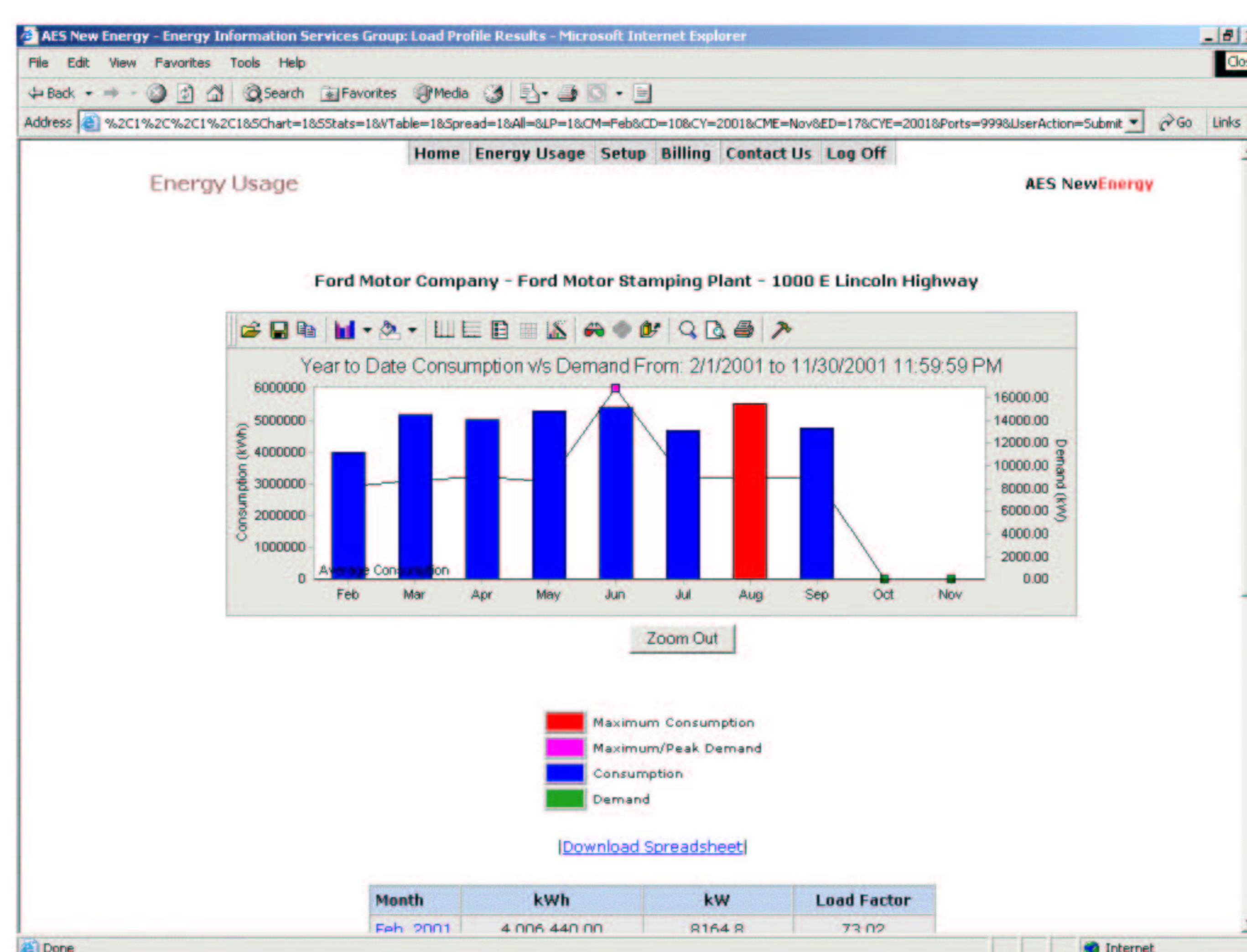


EnergyTracking

The EnergyTracking Internet-based tool automatically collects and manages valuable energy data and then translates the data into useful and actionable insights for the customer. EnergyTracking users gain control over their energy costs via a variety of interactive and automated analysis tools that are delivered via a convenient and easy-to-use web browser such as Internet Explorer.

EnergyTracking manages large volumes of historic data from many meters or loggers. It presents current data up to the last hour as well as historical data in both tabular and graphical form. EnergyTracking is equipped with a powerful set of automatic reporting and alarm tools that push information to users, reducing the frequency of visits to the website.



Sample Energy Usage Report

Features

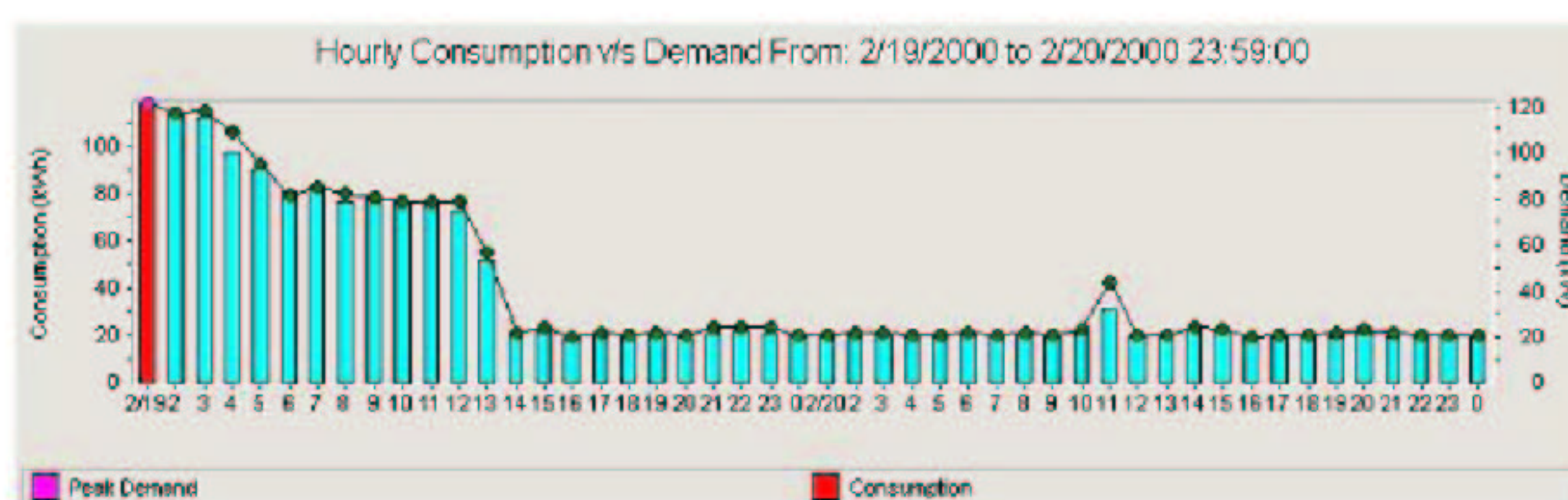
- Extensive, comprehensive resource for usage data, billing data and load curtailment management.
- Provides interval data by month, day, hour or by raw interval in an intuitive, easy to read manner.
- Customer may do comparative study on various periods on usage data and against predefined benchmarks.
- Provides bill or statement in .PDF file.
- Generates downloadable files in Excel or other desired formats.
- Reports on Monthly Usage Data.
- Auto generated reports and alarm notification sent in the form of email, fax and pager.

EnergyTracking

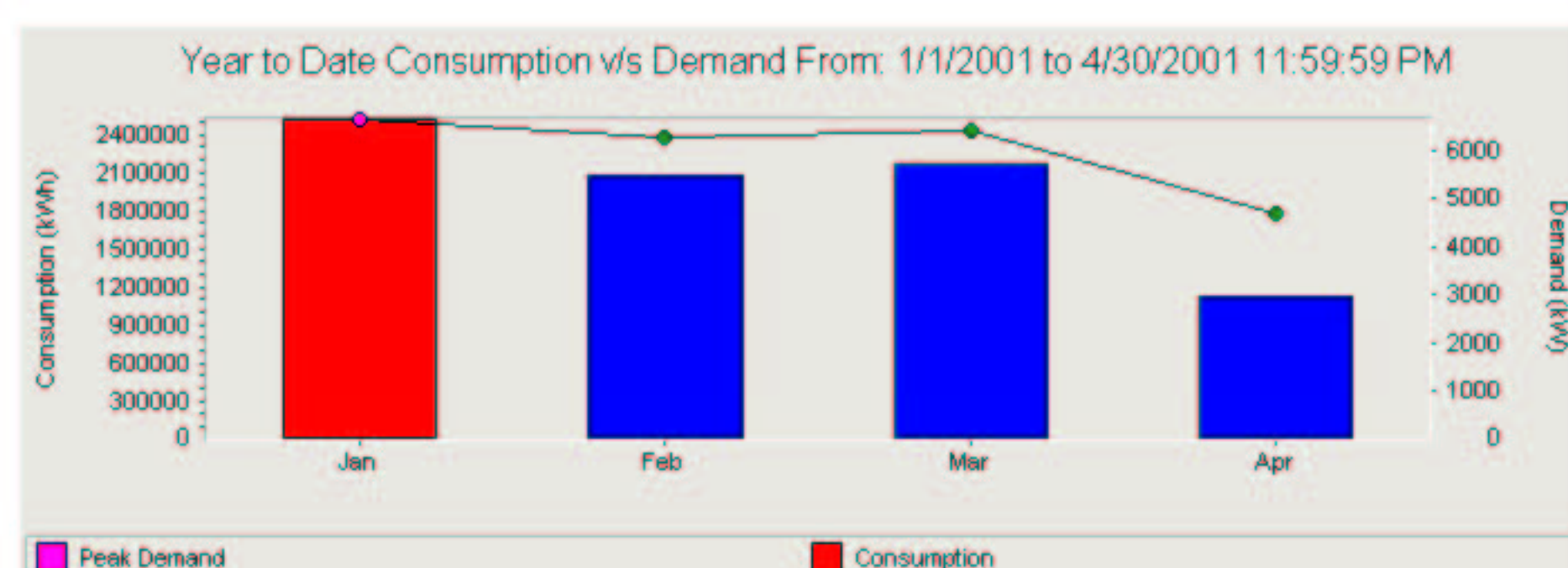
Sample Graphical Reports

Report Dispatch Confirmation

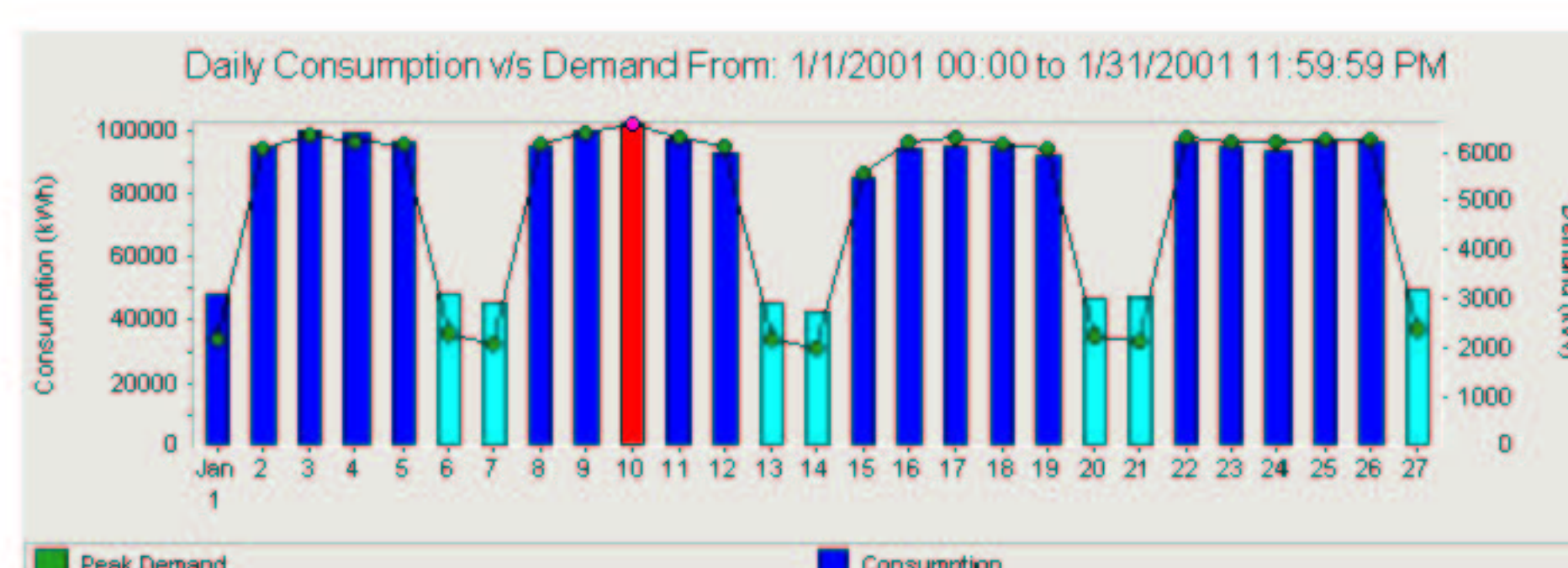
Sending Hourly Load Profile & Peak Demand Report to kmistry@energytracking.com...
This may take several minutes depending on the timespan of the report!



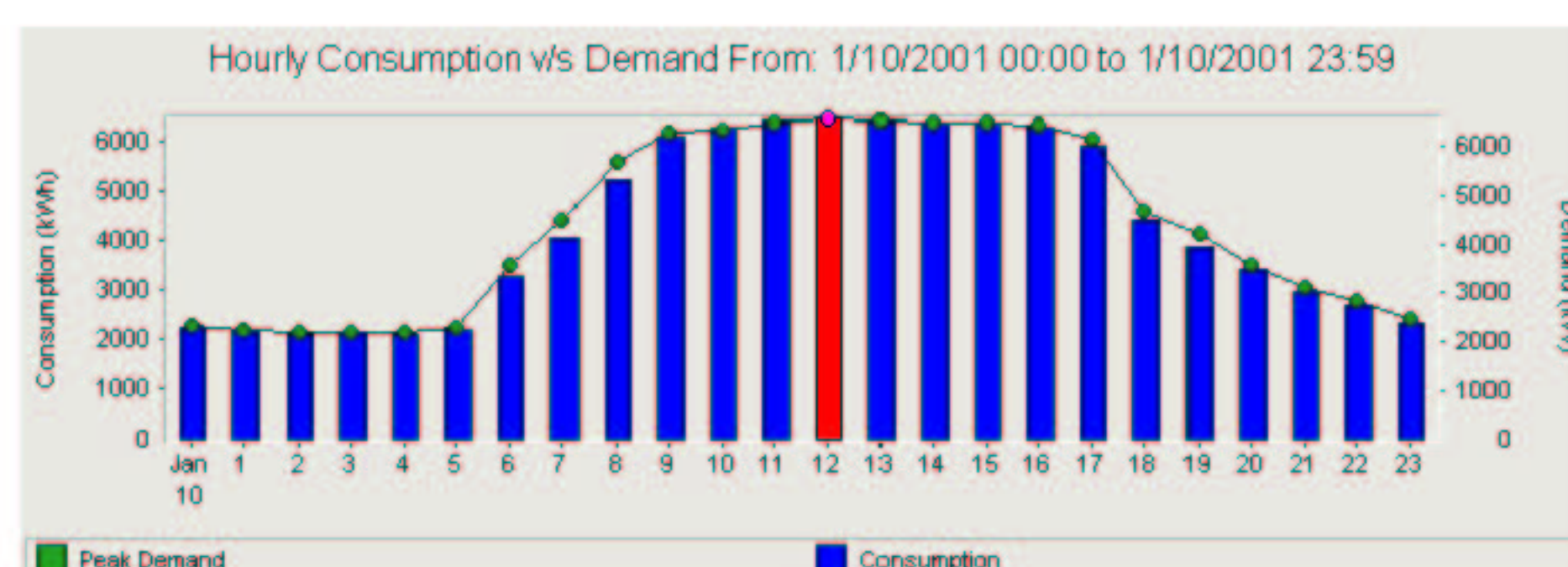
Energy Usage



Monthly



Daily



Hourly

Month	kWh	kW
Jan 2001	2,509,683.00	6,632.00
Feb 2001	2,073,086.00	6290.24
Mar 2001	2,156,749.00	6410.24
Apr 2001	1,115,329.00	4703.04
Totals	7,854,846.00	
Max Demand		6,632.00

These products are protected under patent pending.
Specifications are subject to change without notice.

Setsquare Energy Solutions Ltd
5b Valley Industries
Hadlow Road
Tonbridge
Kent TN11 0AH

Telephone: 01732 852555
Facsimile: 01732 852666
www.setsquare-energy.co.uk
info@setsquare-energy.co.uk