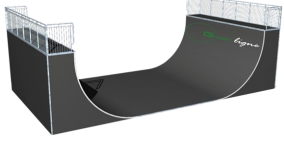


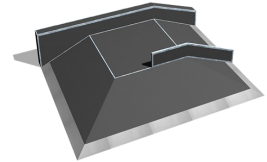
Roller Sports

Our wheeled sports equipment is designed and manufactured to comply with European standard BSEN 14974 : 2006 + A1 : 2010.

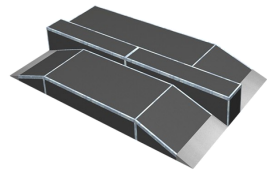
Strong galvanised steel frames are used with a choice of stainless steel, GRP or concrete surfaces. We can design a scheme that meets your budget from a single ramp or trick box to a complete skate park.



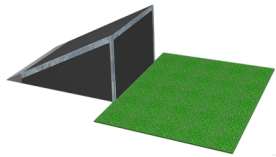
Half pipe



Pyramid



Double Launch Box



Bank



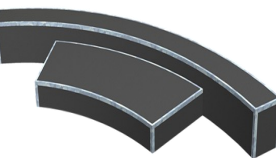
Competition pipe with channel



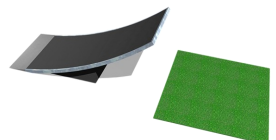
Rail



Quarter pipe



Rounded Curb



Kicker



Half pipe



Ollie box



Quarter pipe



Bank



Wave



Jump ramp



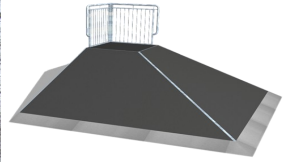
Rail



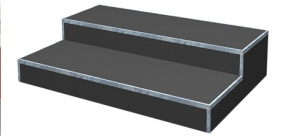
Table top with curb



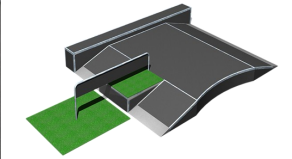
Picnic Table



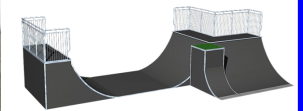
Corner Bank



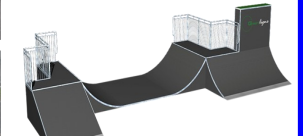
Ollie Box



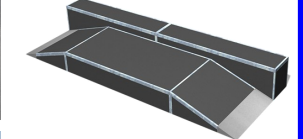
Fun box with rail and curb



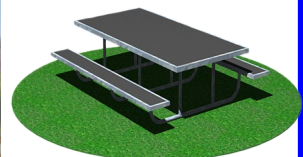
Kombi pipe



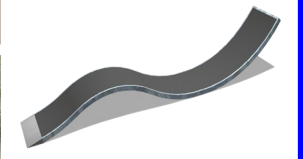
Kombi Pipe 2



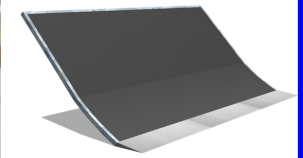
Launch Box



Picnic Table



New Wave



Wall Ramp