

XSCAN-A Series

<The Answer for Quality>

www.xavis.co.kr



► Application

- PCB, PCBA Surface Mounted Board, MLB, etc.
- μ BGA, BGA, CSP, ACF, Flip-Chip, FPCB
- Semiconductor Chip, Fine Pitch Electronic Components, etc.
- Engineering Plastic Injection Molding, Camera Module, etc.
- Rechargeable Batteries (incl. EV & ESS)

► Feature

- High Resolution FPD (Flat Panel Detector)
- Detector Tilt (50°)
- Large PCB Size Available (Table Size: 520 x 520mm)
- Navigation User interface
- Real 3D CT (option)
- Tube Focus Size: 5 μ m
- World class High resolution X-ray image
- Various Optional Functions (Rotation, CT, 3D)
- Easy to Use & User Friendly Operation

Xscan A-Series : Compact dimension using by Flat Panel Detector comparing to Image Intensifier Minimized the Magnification using by Detector Tilt comparing to Table Tilt Available to Large Size PCB

► Main Feature

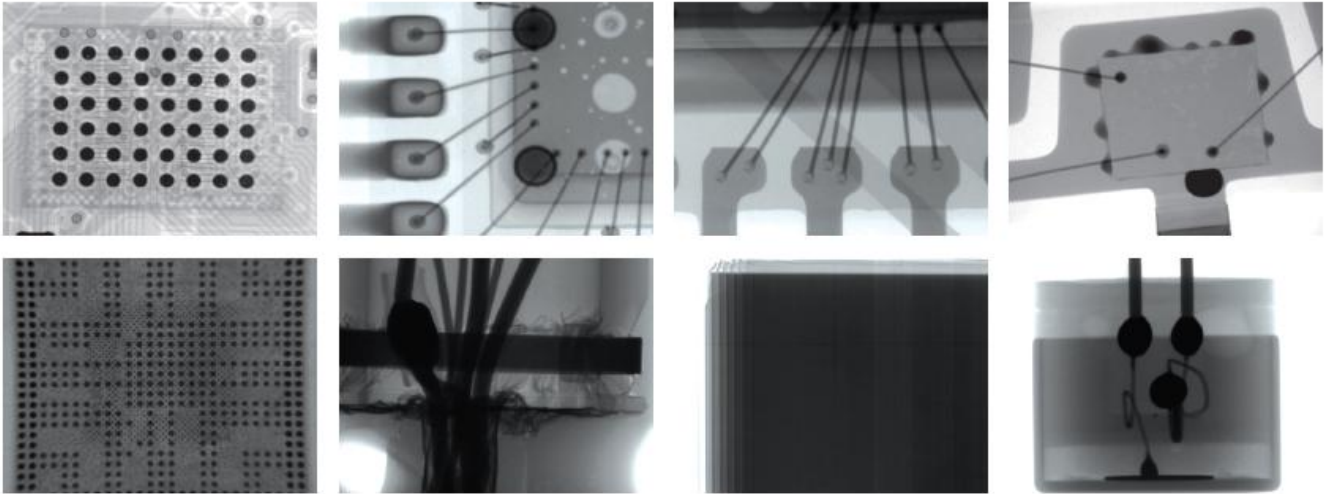
▽ High quality inspection system

- Focus size : 5 μ m
- Table size: 520 x 520 mm
- Detector : FPD(Flat Panel Detector)
- X-Y-Z stroke : 520 x 520 X 270mm, Tilt 50°

▽ User-friendly and easy-to-use

- Real time image filtering function
- Pseudo 3D image
- Navigation
- Visual error messages

► Inspection Image



► CT and 3D & Rendering Image



Specification		XSCAN-A090	XSCAN-A100B	XSCAN-A100	XSCAN-A130
Tube	Focus Size(standard)	5 μ m			
	Voltage / Current / Power	90kV / 200 μ A / 8W	100kV / 250 μ A / 10W	100kV / 200 μ A / 20W	130kV / 300 μ A / 39W
	Magnification	x148 / x308	x163 / x339	x177 / x368	x123 / x256
X-ray detector		2" FPD(Flat panel detector)			
Tilt angle		50° (Detector tilt)			
Manipulator		X, Y, Z, Tilt / Rotation(Optional)			
Table size		520 x 520mm			
Max. Sample Loading		5Kg			
X-ray leakage dose		1 μ Sv/h or less			
Dimension(W x D x H)		1360x 1440 x 1700			
Machine weight		Aprox.1,000Kg			Aprox.1,250Kg
Power supply		220 VAC Single Phase 50/60Hz			
Remark		CT and 3D Reconstruction Option			