

Newsletter

March 2016

NEW Electric Actuators Type EA25 - 250 Small & Light



- Great visibility with LED feedback
- Integrated limit switches OPEN/CLOSE/MIDDLE
- Integrated heating element
- Easy position detection & re-adjustment

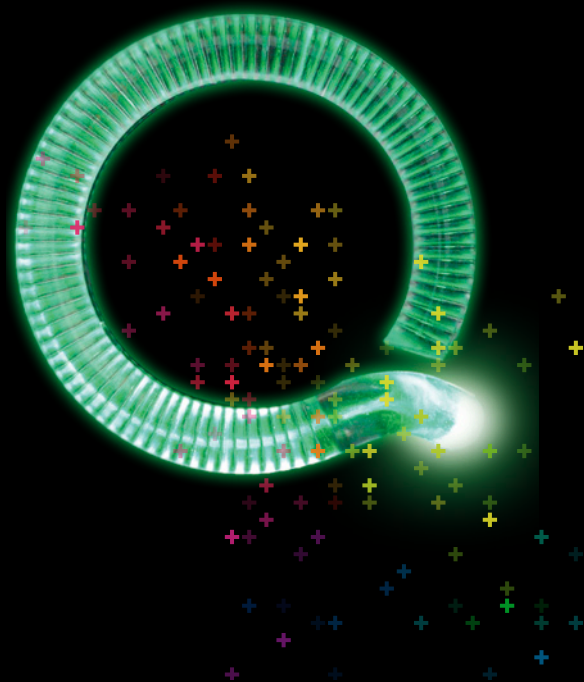
Product short spec

| Old | EA21 | EA31 | EA42 | |
|------------------|------|------|-------|-------|
| NEW | EA25 | EA45 | EA120 | EA250 |
| Peak Torque (Nm) | 25 | 45 | 120 | 250 |

Plug & Play Accessories

- Monitoring Board
- Positioner Board
- Fail-safe return unit
- Profi bus DP V0 - June 2016

With the new actuators, we have also released our new electric 2-way/3-way ball valves and butterfly valves.



[Click here to link to YouTube video](#)

[Click here for more information](#)

For electric actuated valves that are not online please contact the sales team for configuration.

George Fischer Sales Limited
Coventry, CV2 2ST
Phone 02476 535 535
uk.ps@georgfischer.com