

OPERATOR'S MANUAL



Model 88F Twincone[®] Magnet Wire Stripper

PRODUCTION WIRE PROCESSING EQUIPMENT

CARPENTER MODEL 88F TWINCONE MAGNET WIRE STRIPPER

IMPORTANT NOTICE

The products in this shipment left our facility in good working condition.

Their safe delivery is the responsibility of the carrier that delivered this shipment to you.

Our stated shipping terms are F.O.B. our facility at 110 Fairgrounds Drive, Manlius, NY 13104.

According to applicable laws, the responsibility for this shipment was transferred to you as soon as the carrier accepted the goods at our warehouse.

If concealed damage is discovered after unpacking this shipment, you must submit a damaged freight claim with the carrier. Carpenter Mfg. Co., Inc. cannot submit your claim for you.

In order for you to collect for concealed damage, the carrier must be notified within 5 days of the date you receive this shipment.

You must leave the damaged items and packing material as is (i.e. return all merchandise and all packing material to the shipping container) until the claim has been inspected by the carrier.

Also, the carrier will not accept a claim if the goods have been moved from the point of the carriers delivery to another street address.

If you have any questions or problems, please give us a call at 315.682.9176.

CARPENTER MODEL 88F TWINCONE MAGNET WIRE STRIPPER

****IMPORTANT****

PLEASE READ ENTIRE INSTRUCTIONS BEFORE OPERATING MACHINE

APPLICATION

The Model 88F is used on miniature coils and magnet wires in the 26 AWG and smaller range. Our TWINCONE stripping wheels allow close stripping to within 1/8" of a component body.

Two grades of TWINCONE stripping wheels are available:

#661 used for 26 to 33 AWG

#640 used for 34 to 48 AWG

SET UP

Turn Adjusting Knob **#1585** clockwise while moving the wire between the TWINCONE Stripping Wheels with and in and out motion until a successful strip has been achieved.

NOTE: Use only enough pressure on the TWINCONE Stripping Wheels to produce a clean strip.

OPERATION

Insert the wire between the TWINCONE Wheels to the desired strip length and then slowly withdraw the wire. On larger wires it may be necessary to repeat this process while rotating the wire 90 degrees.

CAUTION: On very fine wire it is important to keep the wire moving in a smooth motion. (Fiberglass will not readily reduce wire diameter but if the wire is held in one spot it will create heat and can cause the wire to fracture).

ELEVATING OR CHANGING WHEELS

Loosen Thumb Screw **#3877** and turn Wheel Guard **#1561** 90 degrees to the right and separate TWINCONES approximately 1/2". Using Wrench **#1620** as a lever, insert it into the Set Screw Collar located at the base of the wheel. Move the wrench back and forth to assist in elevating the TWINCONE about 1/4" up the wheel shaft. Now loosen the same Set Screw Collar, and elevate the collar to the base of the TWINCONE wheel. After both wheels have been elevated, break the "wheel tips" flush with the end of the shaft. As the TWINCONE wheels wear and are elevated, up to 80% of the wheel can be utilized.

TWINCONE WHEEL DRESSING

When new TWINCONE Wheels are installed or worn TWINCONE Wheels are elevated it is necessary to properly "dress" the wheels using the **#2998** Wheel Dresser. To perform this procedure turn the machine **ON** and turn the Adjustment Knob **#1585** to separate the TWINCONE Wheels far enough so that the Wheel Dresser can be inserted between them without making contact. Insert the Wheel Dresser and slowly turn the Wheel Adjustment Knob counter clockwise until light contact is made with the Wheel Dresser. Now move the Wheel Dresser **up** and **down** between the TWINCONE Wheels until the stripping surface of the TWINCONE Wheels are **Clean** and **Parallel** to each other.

NOTE: To achieve optimum stripping results it is important to keep the TWINCONE Stripping Wheels **Clean** and properly **Dressed**.

CARPENTER MODEL 88F TWINCONE MAGNET WIRE STRIPPER

WARRANTY

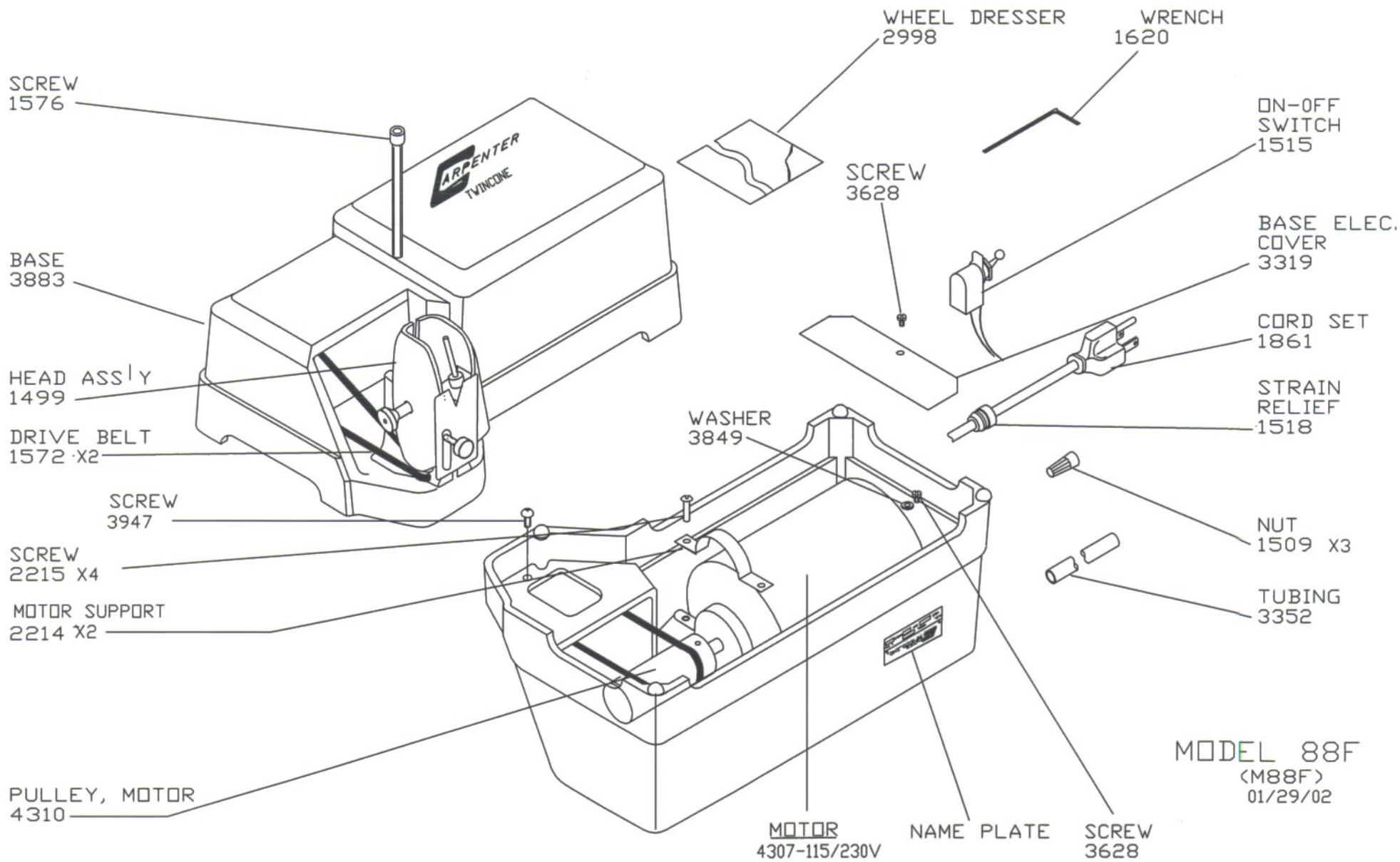
Carpenter Mfg. Co., Inc. manufactures its products to be free from defects in materials and workmanship. Should any defect occur within 1 year after shipment, Carpenter Mfg. Co., Inc. will at its option, exchange or repair the defective device.

Repairs or adjustments to equipment under warranty can be performed at our factory or at the customer location, at the option of Carpenter Mfg. Co., Inc. In most cases a 1-2 day turn around time will be necessary to repair equipment at our facility. When equipment is returned to our factory for repair or replacement, freight charges will be borne by the customer. Repaired or replaced equipment will be returned at Carpenter's expense via U.P.S. ground service. If alternate shipping is requested by the customer, the difference in shipping charges will be billed to the customer.

This is a limited warranty and is in lieu of all other representations and expressed and implied warranties (including the implied warranties of merchantability and fitness for use.) Under no circumstances shall Carpenter Mfg. Co., Inc. be liable for any incidental or consequential property damages or losses subsequent to misuse or improper maintenance of this equipment.

Not covered by this warranty are:

- Consumable parts (blades, belts, guides, springs, inserts, stripping wheels, etc.).
- Cosmetic problems (nicks, scratches, etc.).
- Damages caused by any repairs or modifications by unauthorized personnel.
- Abuse.
- Damage caused by shipping.
- Damage caused by environmental and/or atmospheric conditions.
- Damage caused by the use of contaminated compressed air.

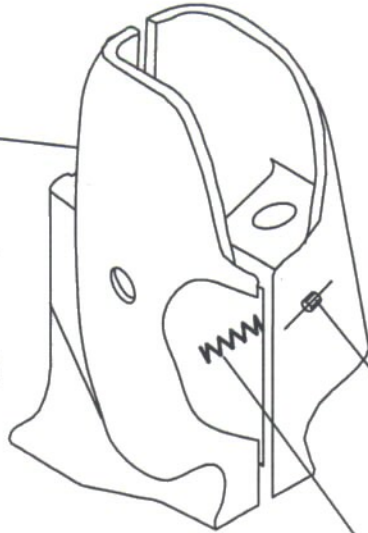


MODEL 88F
 (M88F)
 01/29/02

ADJ. ARM
1584

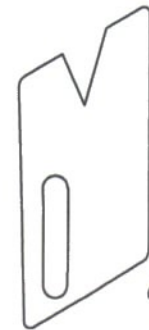
HEAD SUB ASS'Y
1581

ADJ. KNOB
1585



SET SCREW
1550 X2

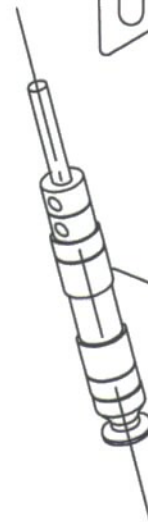
SPRING
1583



WHEEL GUARD
1561



SCREW ASS'Y
3877



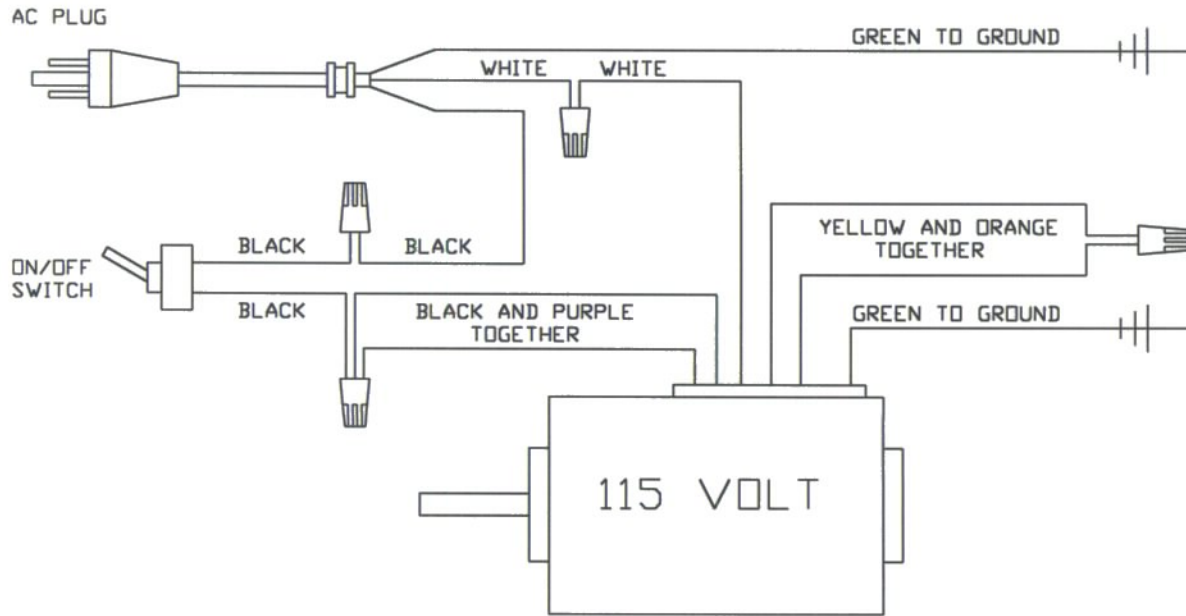
BEARING ASS'Y
1614 X2

1499
HEAD ASS'Y

1/27/00

WIRING DIAGRAM FOR REPLACEMENT MOTOR #4307

WIRING FOR 115 VOLT



WIRING FOR 230 VOLT

