

COMPLETE CONCEALED SOLUTIONS FOR WARDROBES

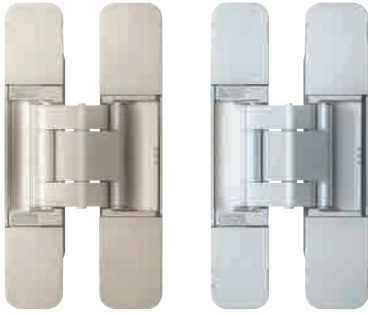


State of the art hardware for contemporary interiors

- Concealed hinges for larger doors
- Adjustability for perfect gap control
- Push-to-open magnetic catches for doors with no handles
- Straightener bars to strengthen thinner larger doors
- Sliding door mechanisms for wardrobes and room dividers

TN-401 concealed straightener bar

3-WAY ADJUSTABLE CONCEALED HINGE HES3D-120 and HES3D-E190



- Adjustable up/down, left/right and in/out
- Gives perfect post-fit gap adjustment
- Separates into two parts for easy installation
- HES3D-120 ideal for thinner doors 29mm
- HES3D-E190 for heavier doors up to 100kgs
- Smooth, reliable and robust seven link articulation

HEAVY DUTY CONCEALED HINGE J95-C24/25T



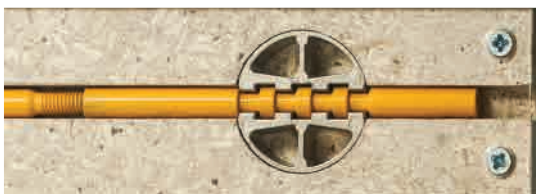
- Familiar design, just bigger
- Two hinges support doors up to 25kgs
- Doors can be up to 800mm wide
- Fully adjustable design
- Mounts into a 40mm hole for greater purchase
- Two parts snap together for easy installation
- Free swinging version available

MAGNETIC TOUCH LATCH (LONG STROKE) ML-120



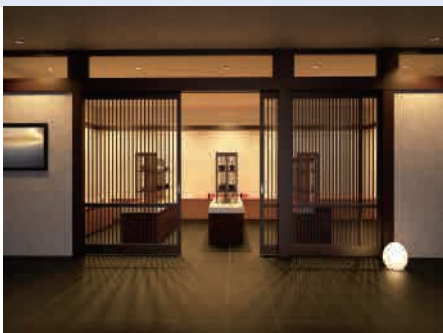
- Adds push-to-open functionality to doors
- Long throw mechanism really pushes door forward
- Reliable rotating cam latch mechanism
- Magnet has 2.4kgs retaining force
- ML-80 and ML-30 for smaller doors
- Non-magnetic touch latches also available

HIDDEN WARDROBE ADJUSTERS TN401



- Range of straightener bars to tension thinner doors
- TN-401 is adjustable from below
- Can be installed discreetly behind a panel
- Ideal for keeping larger doors strong and light
- Reduces number of hinges required
- Two units recommended per door

SLIDING DOOR MECHANISMS



- Complete range of sliding door mechanisms
- Light duty to heavy duty
- One door to multi door systems
- Bi-fold and pocket doors systems
- Optional soft-closing on all sliding systems
- Low profile can be mounted directly to ceiling
- No need for bottom rail gives a clean look