

CUPS WITH VULCANISED SUPPORT

1



These cups are specially designed for gripping moulded or drawn sheet metal and are largely used in the automotive sector. Their ground lip allows an immediate gripping of the load to be lifted as soon as contact is made and ensures perfect vacuum seal.

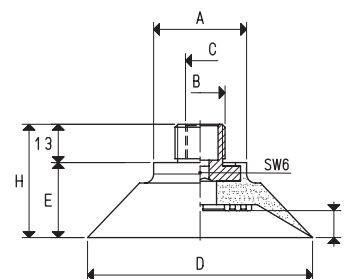
These cups are produced in a special compound called BENZ, able to withstand chlorine usually contained in the oils used for moulding and drawing the sheet metal.

The galvanised steel support is vulcanised onto the cup. They are obviously available also in natural para rubber and silicon.

CUPS WITH MALE VULCANISED SUPPORT

Art.	Force Kg	A Ø	B Ø	C Ø	D Ø	E	G	H	Support material	Weight g
08 50 40 *	4.90	31	G3/8"	--	50	16.0	6.5	29.0	steel	38.5
08 50 40 GR *	4.90	31	G3/8"	G1/8"	50	16.0	6.5	29.0	steel	38.5
08 75 40 *	11.04	31	G3/8"	--	75	25.0	9.0	38.0	steel	57.9
08 75 40 GR *	11.04	31	G3/8"	G1/8"	75	25.0	9.0	38.0	steel	57.9
08 100 40 *	19.62	32	G3/8"	--	100	26.0	9.0	39.0	steel	78.3
08 100 40 GR *	19.62	32	G3/8"	G1/8"	100	26.0	9.0	39.0	steel	78.3
08 100 50 *	19.62	32	G3/8"	--	100	30.5	15.0	43.5	steel	74.8
08 100 50 GR *	19.62	32	G3/8"	G1/8"	100	30.5	15.0	43.5	steel	74.8
08 50 40 1/4" *	4.90	31	G1/4"	--	50	16.0	6.5	29.0	steel	37.4
08 75 40 1/4" *	11.04	31	G1/4"	--	75	25.0	9.0	38.0	steel	57.6
08 100 40 1/4" *	19.62	32	G1/4"	--	100	26.0	9.0	39.0	steel	76.8
08 100 50 1/4" *	19.62	32	G1/4"	--	100	30.5	15.0	43.5	steel	74.3
08 50 40 M10 *	4.90	31	M10	--	50	16.0	6.5	29.0	steel	32.7
08 75 40 M10 *	11.04	31	M10	--	75	25.0	9.0	38.0	steel	49.9
08 100 40 M10 *	19.62	32	M10	--	100	26.0	9.0	39.0	steel	72.1
08 100 50 M10 *	19.62	32	M10	--	100	30.5	15.0	43.5	steel	70.2
08 50 40 M14 *	4.90	31	M14 x 1.5	--	50	16.0	6.5	29.0	steel	34.8
08 75 40 M14 *	11.04	31	M14 x 1.5	--	75	25.0	9.0	38.0	steel	54.9
08 100 50 M14 *	19.62	32	M14 x 1.5	--	100	30.5	15.0	43.5	steel	74.9

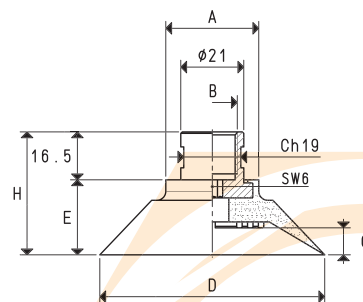
* Complete the code indicating the compound: B= BENZ rubber; N= natural para rubber; S= silicon



CUPS WITH FEMALE VULCANISED SUPPORT

Art.	Force Kg	A Ø	B Ø	D Ø	E	G	H	Support material	Weight g
08 50 40 F *	4.90	31	G3/8"	50	16.0	6.5	32.5	steel	49.5
08 75 40 F *	11.04	31	G3/8"	75	25.0	9.0	41.5	steel	68.3
08 100 40 F *	19.62	32	G3/8"	100	26.0	9.0	42.5	steel	89.3
08 100 50 F *	19.62	32	G3/8"	100	30.5	15.0	47.0	steel	88.8

* Complete the code indicating the compound: B= BENZ rubber; N= natural para rubber; S= silicon



3D drawings available at www.vuototecnica.net