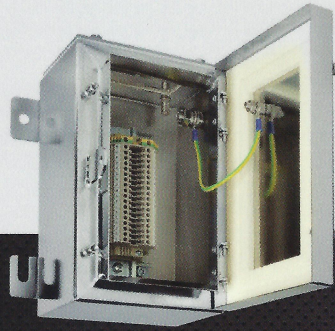


...revolutionise the way you buy your "Standard" ATEX Ex "e" enclosures

Typical sizes available in
2-3 days delivery



**No compromise,
no inconvenience,
no delay.**

JB Systems, a world renowned system integrator for Ex systems, has teamed up with index enclosures to offer an exclusive range of **electro** polished standard sized terminal enclosures with **2-3 day delivery** for use in the EU and especially in the harsh North Sea offshore industry.

[View sizes and full details overleaf >](#)



sira
CERTIFICATION



index

Visit www.jbsystems.co.uk

Email info@jbsystems.co.uk

Call +44 (0) 1296 489967

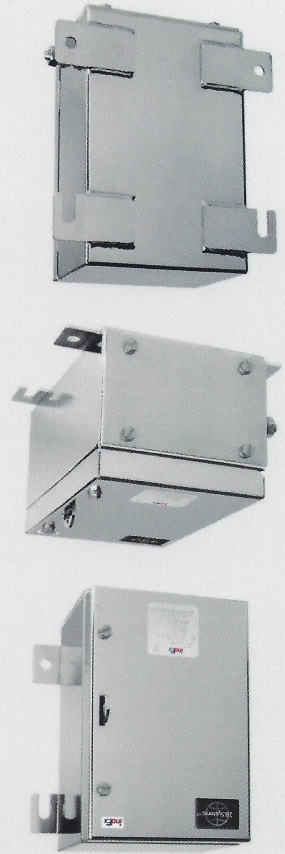
Encompassing the wealth of experience of both companies, we have the capability to offer a 2-3 day delivery of terminal enclosures in electro polish finish, 316l marine grade stainless steel and in the following sizes...



JB Systems Order code Height Width Depth Gland plate Lid Gauge Body Gauge Hinges Bolts

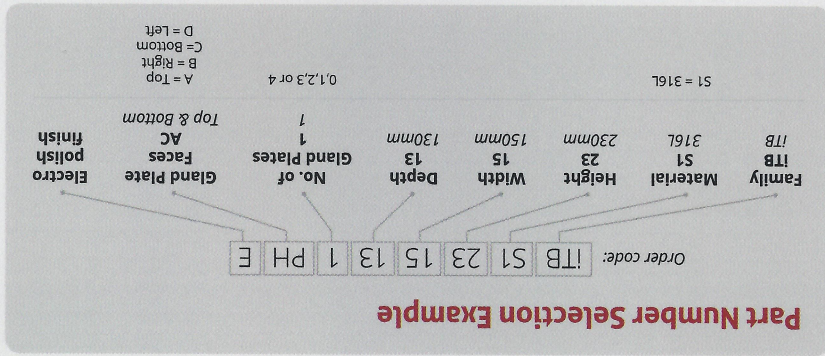
| | | | | | | | | | |
|--------------------------------|-----|-----|-----|------------|-----|-----|-----|---|---|
| !TBS12315131 (or 3) PHE | 229 | 152 | 133 | 1 or 3 | 1.2 | 2 | 2 | 2 | 2 |
| !TBS12626151 (or 3) PHE | 260 | 260 | 150 | 1 or 3 | 1.2 | 2 | 2 | 2 | 2 |
| !TBS13030151 (or 2,3,or 4) PHE | 306 | 306 | 150 | 1,2,3 or 4 | 1.2 | 2 | 2 | 2 | 2 |
| !TBS14538151 (or 3) PHE | 458 | 382 | 150 | 1 or 3 | 1.2 | 2 | 2 | 2 | 2 |
| !TBS14848151PH | 480 | 480 | 150 | 1 or 3 | 1.2 | 2 | 2 | 2 | 2 |
| !TBS11221209PHE | 120 | 120 | 90 | N/A | 1.2 | 1.2 | N/A | 4 | 4 |
| !TBS1151509PHE | 150 | 150 | 90 | N/A | 1.2 | 1.2 | N/A | 4 | 4 |
| !TBS1191910PHE | 190 | 190 | 100 | N/A | 1.2 | 1.2 | N/A | 4 | 4 |

Custom sizes available with optional finishes - also available with rapid delivery
So speak to our sales team now and stop letting your customers down!



We keep a significant stock of each size with options available complete with:

- **Entries** to your exact requirements.
- **Gland plate** options available.
- **Terminals:** a full range always in stock.
- **Mounting feet:** exact footprint to replace existing.
- **Mounting plates:** 1.5mm S5 or 2mm zinc.
- **Finish:** Electro polished. Options available.
- **Padlock hasp:** ITB range only.



Call +44 (0) 1296 489967

Email

info@jbsystems.co.uk

Visit

www.jbsystems.co.uk

index