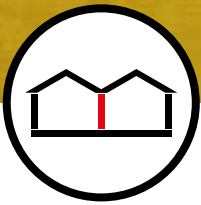


Party Wall Roll

April 2017



Description

Superglass Party Wall Roll is a lightweight, non-combustible glass mineral wool insulation roll. The flexible roll is cut at 3x455mm widths to fit between standard wall ties spacings and to allow easy installation and minimum on-site cutting and waste. Manufactured at a minimum density of 18kg/m³.

Application

Superglass Party Wall Roll is designed to provide thermal and acoustic insulation and help provide a zero u-value within masonry party or separating walls as described within Approved Document L1A (England & Wales) and Technical Handbook Section 6 (Scotland) respectively. Party Wall Roll may be used as a component in a number of Robust Details Solutions including proprietary systems E-WM-22, E-WM-23 & E-WM-27 (England & Wales) and V-WM-27 (Scotland). It may also be used in party wall systems which require on-site pre-completion (England & Wales) or post-completion (Scotland) acoustic testing.

When installed in a masonry party or separating wall in conjunction with effective edge sealing it will negate the effect of thermal bypass associated with such walls whilst not diminishing their acoustic performance.



Thermal Insulation

Party Wall Roll has a thermal conductivity of 0.036W/mK



Acoustic Insulation

Party Wall Roll provides excellent sound absorption performance.



Recycled Content

Party Wall Roll is manufactured from up to 84% recycled glass bottles.



BRE Green Guide Rating

Party Wall Roll has a Generic BRE Green Guide Rating of A+.



Fire Performance

Party Wall Roll has a fire classification of A1 non-combustible.

[teamworks]

www.superglass.co.uk

bim Available on
bimstore.co.uk

Your insulation team
Superglass

A **TECHNICOL** company

Party Wall Roll

Product dimensions and information						
Thickness (mm)	Length (m)	Width (mm)	Pack Area (m ²)	R-Value (m ² K/W)	Packs per pallet	Code
75	7.70	3x455	10.51	2.05	24	5873
100	5.75	3x455	7.85	2.75	24	5872
125	4.50	3x455	6.14	3.45	24	5874*
150	3.50	3x455	4.78	4.15	24	5869*

*Non-Standard Product

Density

Party Wall Roll is manufactured at a minimum density of 18kg/m³.

Thermal Performance

Party Wall Roll has a thermal conductivity of 0.036W/mK.

Fire Performance

Superglass products are classified as Euroclass A1 to BS EN 13501-1. Superglass products being non-combustible will not contribute towards a fire load.

Environment

Superglass products have zero Ozone Depletion Potential (ODP) and zero Global Warming Potential (GWP). The products are also CFC and HCFC free.

Recycled Content

Superglass products are manufactured from up to 84% recycled glass bottles which would otherwise go to landfill.

Quality

Superglass products are manufactured in accordance with BSI Quality Assurance Standard BS EN ISO 9001:2012.

Standards

Superglass products are manufactured in accordance with BS EN 13162:2015 and BS EN 13172:2015 for Factory made mineral wool products.

Durability

Superglass products are non-hygroscopic, will not rot, degrade or sustain vermin and will not encourage the growth of mould, bacteria or fungi.

Vapour Resistance

Superglass products offer negligible vapour resistance allowing vapour to pass freely through the insulation.

Handling & Storage

Superglass products are easy to handle, cut and install. The products are supplied compression packed in polythene to provide short term protection only. For long term protection, the product must be stored indoors or under a waterproof covering in order to protect from weather damage. The products should not be left permanently exposed to the elements.

Building Information Modelling (BIM)

BIM objects for this product can be downloaded from www.bimstore.co.uk or www.superglass.co.uk

Certification

CE Marked to BS EN 13162:2015.

A copy of the Party Wall Roll Declaration of Performance (DoP) ref: DOP0005 can be downloaded from the Superglass website.

Associated Products

TF Party Wall Slab
TF Party Wall Roll

Suitable for use in **robustdetails** masonry party walls

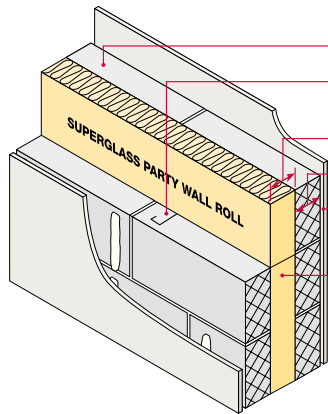
Superglass Party Wall Roll can be used in the following Robust Details specifications:

Robust Details Solutions - England & Wales				
Robust Detail	Minimum Cavity Width (mm)	Block Type & Density (kg/m ³)	Parge Coat Required	Wall Finish
E-WM-1	75	Dense Aggregate - 1850 to 2300	No	Wet Plaster
E-WM-2	75	Lightweight Aggregate - 1350 to 1600	No	Wet Plaster
E-WM-3	75	Dense Aggregate - 1850 to 2300	Yes	Render and gypsum-based board on dabs
E-WM-4	75	Lightweight Aggregate - 1350 to 1600	Yes	Render and gypsum-based board on dabs
E-WM-5	75	Besblock 'Star Performer' - 1528	Yes	Render and gypsum-based board on dabs
E-WM-6	75	Aircrete - 600 to 800	Yes	Render and gypsum-based board on dabs
E-WM-10	75	Aircrete - Thin Joint System - 600 to 800	Yes	Render and gypsum-based board on dabs
E-WM-11	100	Lightweight Aggregate - 1350 to 1600	Yes	Render and gypsum-based board on dabs
E-WM-12	75	Plasmor 'Aglite Ultima' - 1050	Yes	Render and gypsum-based board on dabs
E-WM-13	75	Aircrete - Thin Joint Untied System - 600 to 800	Yes	Render and gypsum-based board on dabs
E-WM-16	100	Dense Aggregate - 1850 to 2300	Yes	Render and gypsum-based board on dabs
E-WM-18	100	Dense Aggregate - 1850 to 2300	No	Wet Plaster
E-WM-19	100	Dense or Lightweight Aggregate - 1350 to 1600 or 1850 to 2300	Yes	Render and gypsum-based board on dabs
E-WM-21	100	Lightweight Aggregate - 1350 to 1600	No	Wet Plaster
E-WM-22	100	Lightweight Aggregate - 1350 to 1600 or Plasmor 'Aglite Ultima' - 1050	No	Gypsum-based board on dabs
E-WM-23	100	Aircrete - Standard and Thin Joint - 600 to 800	No	Gypsum-based board on dabs
E-WM-25	100	Porotherm - Thin Joint - n/a	Yes	Ecoparge gypsum-based board on dabs
E-WM-26	100	Besblock 'Star Performer' - 1528	No	Gypsum-based board on dabs
E-WM-27	75	Lightweight Aggregate - 1350 to 1600	No	Gypsum-based board on dabs
E-WM-29	75	Porotherm - Thin Joint - n/a	Yes	Ecoparge gypsum-based board on dabs

Robust Details Solutions - Scotland				
Robust Detail	Minimum Cavity Width (mm)	Block Type & Density (kg/m ³)	Parge Coat Required	Wall Finish
V-WM-11	100	Lightweight Aggregate - 1350 to 1600	Yes	Render and gypsum-based board on dabs
V-WM-19	100	Dense - 1850 to 2300 or Lightweight Aggregate - 1350 to 1600	Yes	Render and gypsum-based board on dabs
V-WM-21	100	Lightweight Aggregate 1350 to 1600	No	Wet Plaster
V-WM-27	75	Lightweight Aggregate - 1350 to 1600	No	Gypsum-based board on dabs

The above table is to be used as a guide only. Always refer to the Robust Details Handbook.

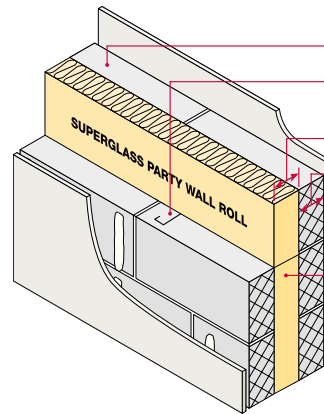
E-WM-22



- Block density:** 1350 to 1600 kg/m³ or Plasmor Aglite Ultima 1050kg/m³
- Wall Ties:** Approved Document E 'Tie type A'
- Cavity width:** 100mm (min)
- Block thickness:** 100mm (min), each leaf
- Wall finish:** Gypsum based board mounted on dabs (nominal 10kg/m²)
- Insulation:** Superglass Party Wall Roll

External flanking wall: Masonry (both leaves) with 50mm (min) cavity - fully filled or partially filled with Superglass Superwall Cavity Slabs or fully filled with Superglass Superwhite 34 Blown Cavity Insulation.

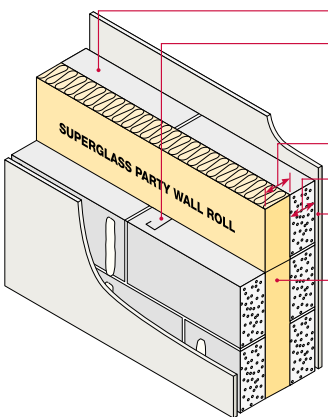
E-WM-27 & V-WM-27



- Blocks:** 1350 to 1600 kg/m³
- Wall Ties:** Approved Document E 'Tie type A'
- Cavity width:** 75mm (min)
- Block thickness:** 100mm (min), each leaf
- Wall finish:** Gypsum based board mounted on dabs (nominal 8kg/m²)
- Insulation:** Superglass Party Wall Roll

External flanking wall: Masonry (both leaves) with 50mm (min) cavity - fully filled or partially filled with Superglass Superwall Cavity Slabs or fully filled with Superglass Superwhite 34 Blown Cavity Insulation.

E-WM-23



- Block density:** 600 to 800kg/m³
- Wall Ties:** Approved Document E 'Tie type A'. For thin joint, wall ties must be Ancon Building Products Staifix HRT4 or Clan PWT4 at no more than 2.5 ties per square metre
- Cavity width:** 100mm (min)
- Block thickness:** 100mm (min), each leaf
- Wall finish:** Gypsum based board mounted on dabs (nominal 8kg/m²)
- Insulation:** Superglass Party Wall Roll

External flanking wall: Masonry (both leaves) with 50mm (min) cavity - fully filled or partially filled with Superglass Superwall Cavity Slabs or fully filled with Superglass Superwhite 34 Blown Cavity Insulation.

Benefits*

- Compliant with standard 12.5mm plasterboard (nominal 8kg/m² density).
- No parge coat required.
- Party Wall Thermal Bypass - Full-fill solution to aid zero u-value compliance.
- No requirement for pre/post-completion acoustic testing.
- Provides one insulation technique on-site when used in conjunction with Superglass Superwall Cavity Slab in external masonry walls.

*Benefits of E-WM-23 & E-WM-27

The requirements of the Robust Details Handbook should be strictly followed.

Superglass Insulation Limited

Thistle Industrial Estate, Kerse Road, Stirling, Scotland FK7 7QQ

Technical

Hotline: 0844 381 4022

Email: technical@superglass.co.uk

Fax: 01786 451245

Sales

Tel: 01786 451170

Email: sales@superglass.co.uk

Fax: 01786 451245

Follow us on:

www.facebook.com/superglassinsulationltd

www.twitter.com/superglassins

www.linkedin.com/company/superglass-insulation-ltd

www.pinterest.com/superglassins

[superglass_insulation](https://www.instagram.com/superglass_insulation)

All rights are reserved, including those of photomechanical reproduction and storage in electronic media. Commercial use of the processes and work activities presented in this document is not permitted. Extreme caution was observed when putting together the information, texts and illustrations in this document. Nevertheless, errors cannot quite be ruled out. The publisher and editors cannot assume legal responsibility or any liability whatever for incorrect information and the consequences thereof. The publisher and editors will be grateful for improvement suggestions and details of errors pointed out.

DS01:21436



Your insulation team
Superglass

A TECHNICAL company