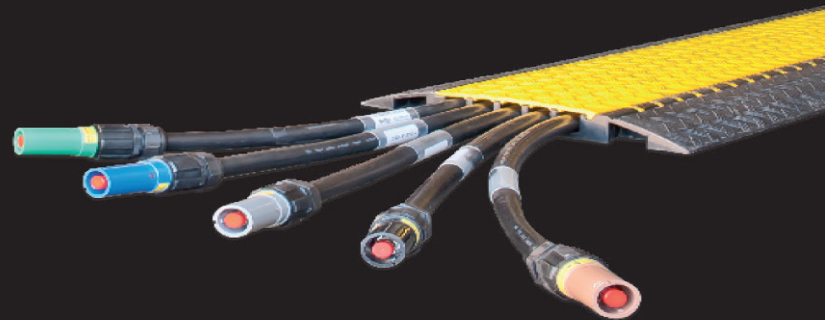


# gofer

Generator Hire & Power Distribution



**Rental Catalogue**

## ■ About Gofer

Gofer has been supplying temporary power service across the UK, since 1988. Our experience and commitment to quality within the industry sees us return annually to some of the best known events and companies in the country and we support more year upon year. Our policy of providing power “on time” and “on budget” is at the core of our business ethic, and we bring uninterrupted power to all sizes of events and industries.

As well as large outdoor festivals, we also support a wide range of other services: such as corporate and sporting events, fashion shows, film, TV, along with the construction and utility industries. Our professional power rental packages are tailor made to meet your exact requirements, whether you require a complete power infrastructure or short/long term distribution hire, we pride ourselves on offering a first class service each and every time for every customer.

## ▲ Contents

- 3 Electrical Cable**
- 4 Electrical Distribution**
- 8 Generators**
- 9 Fuel Tanks & Bowsers**
- 10 Site Lighting**
- 11 Cable Ramp**



## ■ How to request a quotation

### 1. Contact us.

Start by calling our office on 01473 282530 or emailing us on [info@gofer.co.uk](mailto:info@gofer.co.uk).

### 2. The Hire Details.

- What would you like to hire/hire requirements?
- The hire period:
  - Collection & return dates
  - or
  - Delivery & collection dates
- Contact details and delivery address (if necessary).

### 3. Company/ Hirer Details.

- Company/hire name.
- Company/hire address.
- Company/hire telephone number and email.
- Contact name of the person responsible for the hire.

### Payment & Invoicing

For new clients, we can accept BACS, Cash or Debit/Credit Card in advance of the hire starting. Card payments will be subject to a 3% card charge.

Account holders, please issue an official purchase order number along with the details of the hire when placing an order.

### Opening an account.

To open an account simply fill out and return our account application form. Once the application has been received we will then process the application and be in contact. Application forms can be requested from our finance department; [finance@gofer.co.uk](mailto:finance@gofer.co.uk)

## Single & Multi Core Cables

Gofer has a large stock of cables and electrical adapters, both single and three phase. Bespoke lengths and configurations are available upon request.

**16a 240v** 2.5mm 1P+N+E CEE Form plug & socket.



**32a 240v** 6.0mm 1P+N+E CEE Form plug & socket.



**63a 240v** 16mm 1P+N+E CEE Form plug & socket.



**125a 240v** 25mm 1P+N+E CEE Form plug & socket.



**32a 415v** 6.0mm 3P+N+E CEE Form plug & socket.



**63a 415v** 16mm 3P+N+E CEE Form plug & socket.



**125a 415v** 35mm 3P+N+E CEE Form plug & socket.



### Individual Single Core Cables available as:

- Lug to Lug.
- Power Lock to Power Lock.
- Lug to Power Lock.

**50mm** – 5, 10, 15, 25, 50 & 100 metres

**70mm** – 5, 10, 15, 25 & 50 metres

**95mm** – 5, 10, 15, 25 & 50 metres

**120mm** – 5, 10, 15, 25 & 50 metres

**240mm** – 5, 10, 15, 25 & 50 metres

| Multi-Core Cable Lengths |    |     |     |     |     |      |
|--------------------------|----|-----|-----|-----|-----|------|
|                          | 5m | 10m | 15m | 25m | 50m | 100m |
| <b>16a</b>               | •  | •   | •   | •   | •   | •    |
| <b>32a</b>               | •  | •   | •   | •   | •   | •    |
| <b>63a</b>               | •  | •   | •   | •   | •   |      |
| <b>125a</b>              | •  | •   | •   | •   | •   |      |
| <b>32a</b>               | •  | •   | •   | •   | •   | •    |
| <b>63a</b>               | •  | •   | •   | •   | •   | •    |



## Electrical Distribution

Power distribution is one of our key strengths. We carry a large stock of electrical distribution and cables in both single and three-phase. With a full range of electrical distribution to suit your requirements from 13Amp to 1600Amp, 240v to 415v.

Our range of distribution boards and boxes will see that any event is safely supported, with inlets from 16A single-phase up to 1250A three phase.

All of our products are protected by MCBs, RCDs, RCBOs and are fully tested and certified. Our equipment complies with all required standards.

### GDQ1

**INPUT**  
63A 1 $\phi$  230V

Overall RCD Protection.  
MCB Protection on each outlet.

**OUTPUT**  
2 x 32A 1 $\phi$  230V  
4 x 16A 1 $\phi$  230V



### GDR6

**INPUT**  
63A 3 $\phi$  400V

RCD Protection  
Each Phase.

**OUTPUT**  
1 x 32A 3 $\phi$  400V  
3 x 32A 1 $\phi$  230V  
12 x 16A 1 $\phi$  230V

### GDR2

**INPUT**  
63A 3 $\phi$  400V

Individual  
RCBO Protection.

**OUTPUT**  
3 x 32A 1 $\phi$  230V  
6 x 16A 1 $\phi$  230V

### GDR7

**INPUT**  
32A 3 $\phi$  400V

Overall RCD Protection.  
MCB Protection on each outlet.

**OUTPUT**  
3 x 32A 1 $\phi$  230V

### GDR5

**INPUT**  
63A 3 $\phi$  400V

Individual  
RCBO Protection.

**OUTPUT**  
1 x 32A 3 $\phi$  400V  
2 x 32A 1 $\phi$  230V  
6 x 16A 1 $\phi$  230V

### GDR9

**INPUT**  
63A 1 $\phi$  230V

**OUTPUT**  
2 x 16A 1 $\phi$  230V (RCBO)  
2 x 32A 1 $\phi$  230V (RCBO)



# Electrical Distribution

## GDR10 mk2

INPUT  
32A 3 $\phi$  400V

Overall RCD Protection.  
MCB Protection on each outlet.

OUTPUT

## GD3

INPUT  
125A 3 $\phi$  400V

OUTPUT  
3 x 125A 1 $\phi$  230V (MCB)



## GDR11

INPUT  
63A 3 $\phi$  400v

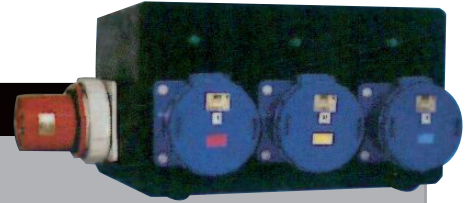
Individual  
RCBO Protection.

OUTPUT  
6 X 32A 1 $\phi$  230V

## GD4

INPUT  
63A 3 $\phi$  400V

OUTPUT  
3 x 63A 1 $\phi$  230V (MCB)



## GD1 mk1

INPUT  
125A 3 $\phi$  400V

OUTPUT  
2 X 63A 1 $\phi$  230V (MCB)  
1 x 32A 3 $\phi$  400V (MCB)  
3 x 32A 1 $\phi$  230V (RCBO)  
4 x 16A 1 $\phi$  230V (RCBO)



## GD5

INPUT  
125A 3 $\phi$  400V

OUTPUT  
2 x 63A 3 $\phi$  400V (MCB)  
3 X 63A 1 $\phi$  230V (MCB)



## GD1 mk2

INPUT  
125A 3 $\phi$  400V

OUTPUT  
1 x 63A 3 $\phi$  400V (MCB)  
1 X 63A 1 $\phi$  230V (MCB)  
1 x 32A 3 $\phi$  400V (MCB)  
3 x 32A 1 $\phi$  230V (RCBO)  
4 x 16A 1 $\phi$  230V (RCBO)



## GD6

INPUT  
125A 1 $\phi$  230V

OUTPUT  
2 x 63A 1 $\phi$  230V (MCB)



## GD2

INPUT  
125A 3 $\phi$  400V

OUTPUT  
2 x 63A 3 $\phi$  400V (MCB)



## GD8

INPUT  
125A 3 $\phi$  400V

OUTPUT  
4 x 32A 3 $\phi$  400V (MCB)



## GD11

**INPUT**  
63A 3ø 400V

**OUTPUT**  
1 x 32A 3ø 400V (MCB)  
6 x 32A 1ø 230V (RCBO)  
3 x 16A 1ø 230V (RCBO)



## GD12

**INPUT**  
125A 3ø 400V

**OUTPUT**  
1 x 63A 3ø 400V (MCB)  
2 x 32A 3ø 400V (MCB)  
6 x 32A 1ø 230V (RCBO)



## GD CSPLIT

**INPUT**  
32A 1ø 230V

**OUTPUT**  
2 x 16A 1ø 230V (MCB)



## GDL5633

**INPUT**  
400A Power Lock

**OUTPUT**  
1 x 125A 3ø 400V (MCB)  
5 x 63A 3ø 400V (RCD)



## GDL4 125

**INPUT**  
400A Power Lock

**OUTPUT**  
4 x 125A 3ø 400V (MCB)



## GDL600

**INPUT**  
600A Power Lock

**OUTPUT**  
2 x 125A 3ø 400V (MCB)  
4 x 63A 3ø 400V (RCD)



## GDL1

**INPUT**  
400A Power Lock

**OUTPUT**  
3 x 63A 3ø 400V (MCB)  
3 x 63A 1ø 230V (MCB)



## GDL4 Trip

**INPUT**  
400A Power Lock

**OUTPUT**  
400A Power Lock

Variable RCD Protection



## GDL2

**INPUT**  
400A Power Lock

**OUTPUT**  
1 x 125A 3ø 400V (MCB)  
2 x 63A 3ø 400V (MCB)  
2 x 32A 3ø 400V (MCB)  
6 x 32A 1ø 230V (RCBO)



## GD1175

**INPUT**  
Busbar 3ø 400V 1175A Max

**OUTPUT**  
2 x 400A Power Lock Vairable RCD  
3 x 125A 3ø 400V Vairable RCD



# Electrical Distribution

## GDL4633

**INPUT**  
400A Power Lock

**OUTPUT**  
4 x 63A 3ø 400V



## GDM2432

**INPUT**  
Busbar 3ø 400V

**OUTPUT**  
24 x 32A 1ø 230V



## GD TRIPS

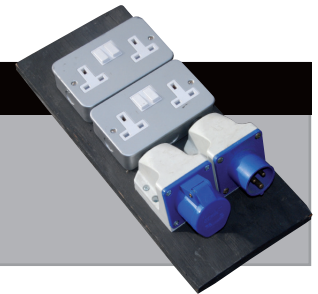
We have a large range of variable RCD units from 16A 1ø 230V to 400A 3ø 400V



## GD PLUG BOARDS

**INPUT**  
16A OR 32A 240V

**OUTPUT**  
13A 1ø 230V



## Splitters & Adaptors

A wide range of splitters and adaptors are available for hire.



## Automatic Mains Failure Panels (AMF)

These panels are designed for backing up an electrical supply which may be unreliable or it is critical to maintain continuity of service. (This is not a seamless change over.)



- 125A
- 250A
- 400A
- 800A
- 1600A
- 2000A



## Transformers

5kVA 240v 32a 1P+N+E incoming supply to 110v output.

4 x 16a 110v sockets  
2 x 32a 110v sockets  
Sockets protected with MCB's  
Size (L545 x W430 x H370mm)  
Heavy duty steel enclosure

10kVA 415v 32a 3P+N+E incoming supply to 110v output.

4 x 16a 110v sockets  
2 x 32a 110v sockets



## Event Power Generation

Gofer's event generator fleet supply instant power wherever you need it. The bespoke design specific for the events industry are silenced with highly finished canopies and electrical distribution mounted directly on each unit. Sets range from 4kVA to 150kVA and each set is trailer mounted for fast deployment, difficult access or sensitive areas with electrical distribution mounted onboard for ease of use.

We know how important it is that you have peace of mind at your event. To ensure a stable power supply we have a selection of AMF (Automatic Mains Failure) and synchronised systems available.



## Industrial Power Application

Industrial application generator sets are available from 4kVA through to 1250kVA with a selection of AMF (Automatic Mains Failure) and synchronised systems available.

### Industries served:

- Construction
- Agricultural
- Utilities
- Residential
- Telecoms
- Facilities Management
- Recycling
- Manufacturing

Our gen-sets feature a user friendly rugged design with long range internally bonded fuel tanks. We can provide site surveys, installations, logistics planning, fuel management and on site maintenance.





# Fuel Tanks & Bowsers

## Fuel Tanks and Bowsers

Long range bunded metal tanks are available to extend onsite fuel storage. These tanks can be piped into our generators which makes fuel handling cleaner, more manageable and environmentally friendly. Towable bowsers to the same specification are also available for distributing fuel around your site.

## Fuel Management

We can oversee your project if required by arranging your re-fuelling logistics and scheduling.

## Fuel Tanks & Bowsers Available

**10TCG** – 990 Litre (L1150 x W1150 x H1320mm)  
Weight unladen 550kg.

**20TCG** – 2000 Litre (L2300 x W1150 x H1320mm)  
Weight unladen 862kg.

**H10TCG** – 1000 Litre (L3020 x W1720 x H1755mm)  
Weight unladen 923kg.

Transcube Global (TCG) fuel tanks are bunded to COP regulations to ensure full environmental compliance with Pollution Prevention Guidelines PPG2.

- Stackable 2 high full or 3 high empty to reduce space.
- Full load lifting eyes, fork lift pockets & internally baffled to allow handling of the TCG full of fuel.
- Electric 12V fuel delivery pump with refuelling nozzle.
- 10TCG & H10TCG can be transported full without the need for ADR certification.

Highway tow fuel bowser UN approved IBC (Intermediate Bulk Container) for the transport of fuel under the ADR regulations.



**10TCG** – 990 Litre Fuel Tank.



**H10TCG** – 1000 Litre Fuel Bowser.



## Site Lighting

Our extensive lighting range consists of internal and external units. All fittings are pre-wired with 16a cee-form connectors.

### Metal Halide Flood Light

Available with Green, Blue, Magenta or White lamps.  
70w to 400w



### Fluorescent Lighting

4' and 5' single and twin models.



### Sodium Flood Lights

Yellow 70w to 400w



### Festoon

1m, 2m, 3m & 5m Spacings.



### Halogen Flood Lights

Halogen Flood Lights  
White 150w to 1500w.



### Twin Head Emergency Lights

Non-maintained.



### Emergency & Exit lights

3 hour maintained and non-maintained.



## Tower Lights

Our self generating units are housed in silent, road towable canopies. Suitable for many outdoor applications such as: construction, security, car parks, emergency incidents; plus event and sporting fixtures.

Key features include:

- 4 x 1000w Metal halide lamps
- Vertical hydraulic mast
- 360° Rotation
- Fully automated mast deployment
- Variable height to 9 meters
- 140 litre fuel tank
- 85 Hours running
- Auxillary 240v sockets
- Noise level 59 dB @ 7 meters
- Bio-degradable hydraulic oil



# Cable Ramp

## Defender Midi Cable Ramp

We hold large stocks of Cable Ramp, our 5 channel Midi system will ensure safe cable management throughout your event. The Defender Midi System features 5 cable ducts, moulded connectors, and supports up to Approx 5 tons per typical tyre imprint.

**Length:** approx. 900mm

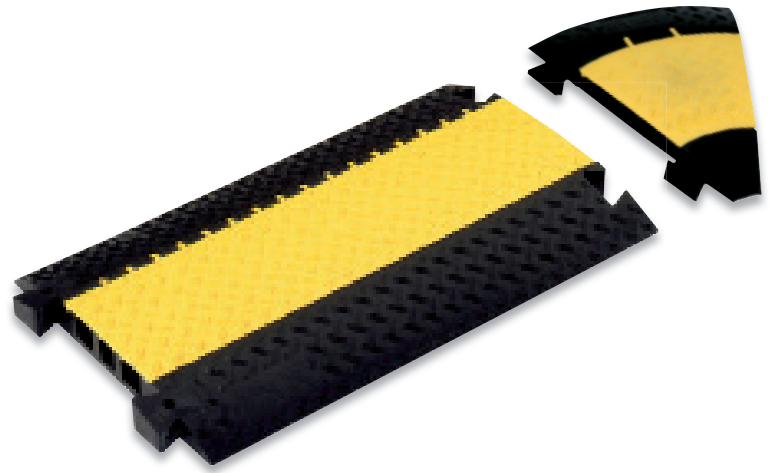
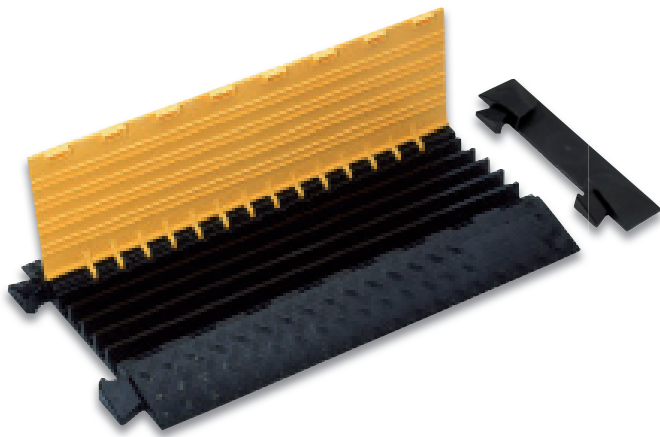
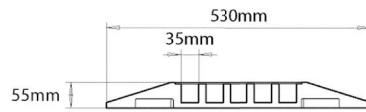
**Width:** approx. 500mm

**Ducts:** 5 cable ducts

**Width:** approx. 32mm

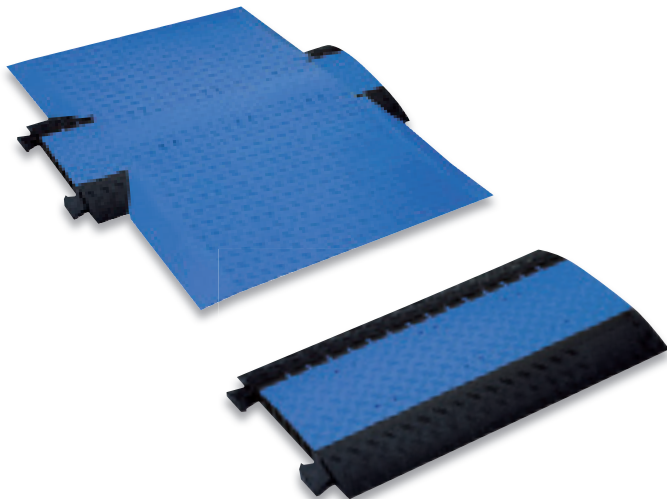
**Height:** approx. 35mm

**Weight:** approx. 10-12 KG



## Defender Wheel Chair Ramp

Professional cable protection combined with a practical solution to make the Defender MIDI cable crossovers.



## Rubber Matting Cable Cover

- Fine-grooved rubber mat black
- 3mm thick
- Width 700mm
- Length 10M
- Non-slip
- Weather proof
- Lays flat
- Coarsely patterned underside



## **Gofer Limited, a modern approach to generator & electrical distribution rental.**

Our professional rental solutions provide full technical support covering installations, logistics planning, fuel management, 24/7 service & breakdown cover.

### Industries Served:

- Events & Entertainment
- Construction
- Utilities
- Manufacturing
- Telecoms
- Facilities Management
- Recycling
- TV & Film

### **Gofer Limited**

Unit 7  
Arkwright Road  
Hadleigh Road Ind. Est.  
Ipswich  
Suffolk  
IP2 0UB

T: 01473 282530  
E: [info@gofer.co.uk](mailto:info@gofer.co.uk)

**[www.gofer.co.uk](http://www.gofer.co.uk)**

[facebook.com/goferltd](https://facebook.com/goferltd)



[twitter.com/gofer\\_ltd](https://twitter.com/gofer_ltd)



[instagram.com/gofer\\_ltd](https://instagram.com/gofer_ltd)



[linkedin.com/company/gofer-limited](https://linkedin.com/company/gofer-limited)

