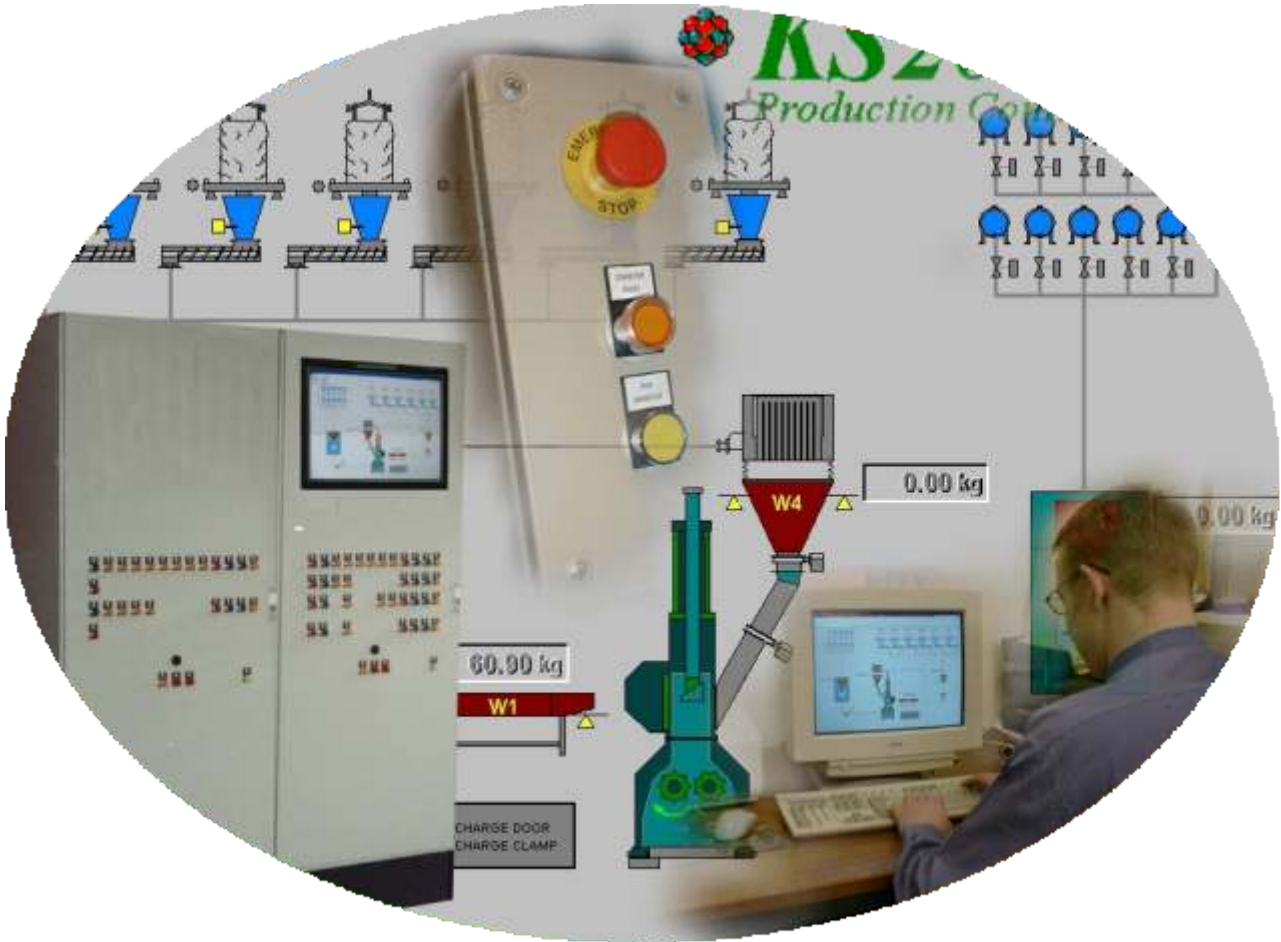




# CJ Waterhouse Co Ltd

MATERIALS HANDLING ▼ WEIGHING SYSTEMS ▼ PROCESS SOLUTIONS  
PLANT CONTROL ▼ AUTOMATION ▼ BESPOKE MACHINERY



## Control & Automation

Tel: +44 (0) 1636 610792

Web: [www.cjwaterhouse.co.uk](http://www.cjwaterhouse.co.uk)

Email: [info@cjwaterhouse.co.uk](mailto:info@cjwaterhouse.co.uk)



Unit 3 & 4 Telford Court, Telford Drive, Newark, Notts, NG24 2DX

# PROCESS CONTROL & AUTOMATION

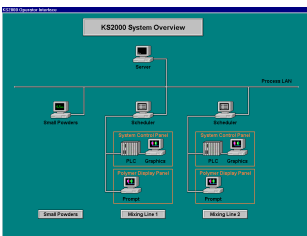
Control systems based on practical application and end user functionality are designed by our in-house engineering team to provide cost effective solutions to a variety of automation requirements.

Such applications ranging from simple 'stand alone' PLC control to sophisticated plant wide integrated manufacturing systems encompassing networked PC / PLC systems, capitalise on our expertise with all major PLC suppliers, Allen Bradley, Mitsubishi and Siemens and seek to employ standard off the shelf hardware available from multiple sources worldwide.



## KS-SERIES PRODUCTION CONTROL

The KS series Production Control Software has evolved through continuous development and customer liaison into our latest server based version, KS3000 running under Windows 7 Professional operating system, providing a fully integrated Production Control System for batching and mixing applications.



Component	Description	Stock	Lot	Date
01984	*** TEST COMPOUND	1	1	1/1/2010
01984	*** TEST COMPOUND	1	1	1/1/2010

Batch No	Time	Component	Description	Stock	Lot	Status
01984	1/1/2010	01984	DRAIN OP SUSPENSORS COMPT1	28	2818	Complete
01984	1/1/2010	01984	DRAIN OP SUSPENSORS COMPT2	28	2818	Complete
01984	1/1/2010	01984	DRAIN OP SUSPENSORS COMPT3	28	2818	Complete
01984	1/1/2010	01984	DRAIN OP SUSPENSORS COMPT4	28	2818	Complete
01984	1/1/2010	01984	DRAIN OP SUSPENSORS COMPT5	28	2818	Complete
01984	1/1/2010	01984	DRAIN OP SUSPENSORS COMPT6	28	2818	Complete
01984	1/1/2010	01984	DRAIN OP SUSPENSORS COMPT7	28	2818	Complete
01984	1/1/2010	01984	DRAIN OP SUSPENSORS COMPT8	28	2818	Complete
01984	1/1/2010	01984	DRAIN OP SUSPENSORS COMPT9	28	2818	Complete
01984	1/1/2010	01984	DRAIN OP SUSPENSORS COMPT10	28	2818	Complete
01984	1/1/2010	01984	DRAIN OP SUSPENSORS COMPT11	28	2818	Complete
01984	1/1/2010	01984	DRAIN OP SUSPENSORS COMPT12	28	2818	Complete
01984	1/1/2010	01984	DRAIN OP SUSPENSORS COMPT13	28	2818	Complete
01984	1/1/2010	01984	DRAIN OP SUSPENSORS COMPT14	28	2818	Complete
01984	1/1/2010	01984	DRAIN OP SUSPENSORS COMPT15	28	2818	Complete
01984	1/1/2010	01984	DRAIN OP SUSPENSORS COMPT16	28	2818	Complete
01984	1/1/2010	01984	DRAIN OP SUSPENSORS COMPT17	28	2818	Complete
01984	1/1/2010	01984	DRAIN OP SUSPENSORS COMPT18	28	2818	Complete
01984	1/1/2010	01984	DRAIN OP SUSPENSORS COMPT19	28	2818	Complete
01984	1/1/2010	01984	DRAIN OP SUSPENSORS COMPT20	28	2818	Complete
01984	1/1/2010	01984	DRAIN OP SUSPENSORS COMPT21	28	2818	Complete
01984	1/1/2010	01984	DRAIN OP SUSPENSORS COMPT22	28	2818	Complete
01984	1/1/2010	01984	DRAIN OP SUSPENSORS COMPT23	28	2818	Complete
01984	1/1/2010	01984	DRAIN OP SUSPENSORS COMPT24	28	2818	Complete
01984	1/1/2010	01984	DRAIN OP SUSPENSORS COMPT25	28	2818	Complete

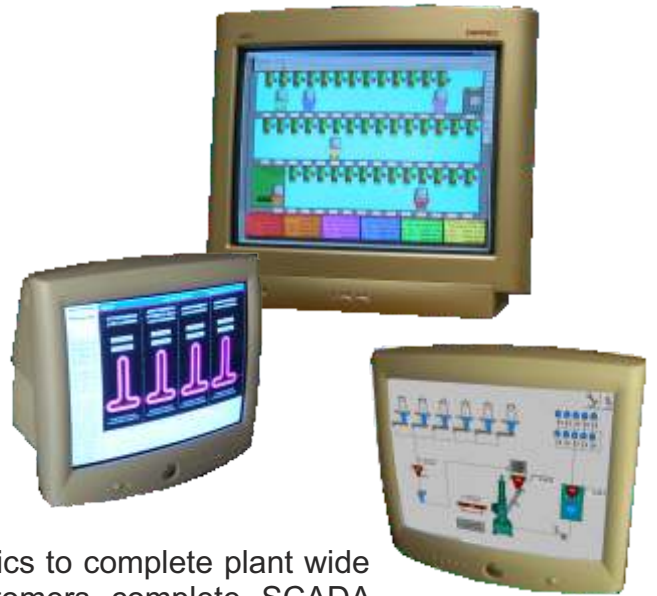
01984, \*\*\* TEST COMPOUND  
Batch 1 of 2  
kg  
0.000 kg  
Place New Bn. Press Start

The system, based on a standard database structure, incorporates material and compound databases, production scheduling, recipe handling, weighing and feeding control, mixing and downstream process control, material stock monitoring, batch reporting, error and alarm monitoring to provide a reliable and flexible control package.

With such standard Windows functionality systems can be implemented to incorporate real time monitoring, trending and SPC with further network integration allowing potential for interfacing with existing management systems and standard applications such as Microsoft Excel.

## SCADA

From Rubber Compounding Industries to Airport Baggage Handling Controls our diverse knowledge of a variety of SCADA & HMI systems enables us to provide a comprehensive control and data acquisition packages with clear and concise graphics and user interface.



With systems ranging from single machinery screen mimics to complete plant wide control and monitoring applications we offer our customers complete SCADA satisfaction. Combine this with our extensive experience of working with all major PLC's and you can be sure of a totally versatile system designed and developed to suit your exact needs.



## CONTROL PANEL DESIGN & BUILD

Whatever the application our team of skilled systems engineers are able to design the most appropriate control solution to suit each individual requirement

All control panels, incorporating PLC logic sequence and motor starters are designed and built in-house to our demanding standards ensuring high reliability and compliance with current Health & Safety requirements.

Our appreciation of the end users requirements and functionality together with our policy of flexibility ensure that we can tailor our supply to meet our customers specific requirements and implement the best possible control solution.





Tel: +44 (0) 1636 610792  
Web: [www.cjwaterhouse.co.uk](http://www.cjwaterhouse.co.uk)  
Email: [info@cjwaterhouse.co.uk](mailto:info@cjwaterhouse.co.uk)

MATERIALS HANDLING ▼ WEIGHING SYSTEMS ▼ PROCESS SOLUTIONS  
PLANT CONTROL ▼ AUTOMATION ▼ BESPOKE MACHINERY



Engineering Systems  
& Machinery for Manufacturing  
Industries

