



WINDOW TECHNOLOGY
DOOR TECHNOLOGY
AUTOMATIC ENTRANCE SYSTEMS
BUILDING MANAGEMENT SYSTEMS



WINDOW TECHNOLOGY – ORDER CATALOGUE

EURO-JET

The Tilt&Turn and Turn-Only hardware range

Edition 11/2014

Securing technology for you





EURO-JET Tilt&Turn and Turn-Only hardware systems

Basic characteristics and advantages 4-5

Order information

Variable handle height – 1-sashed	
Tilt&Turn sash	6-9
Turn-Only sash	10-13
Variable handle height – 2-sashed	
Passive sash	14-17
Tilt&Turn sash	18-21
Fixed handle height – 1-sashed	
Tilt&Turn sash	22-25
Turn-Only sash	26-29
Fixed handle height – 2-sashed	
Passive sash	30-33
Tilt&Turn sash	34-37
Frame components	38-43

Technical information

Application diagram	44
Rebate, screw and position dimensions	45-46
Notes on installation and setting	47-50
Drilling jigs, adjustment tools	51
List of installation drawings	52
List of abbreviations	53
Product information and intended use	54
5 year guarantee	55
Incorrect use and product performance	56
Duty to inform and to instruct	57
Product maintenance	58
Exclusion of liability / Copyright notice	59

EURO-JET Tilt&Turn and Turn-Only hardware systems

Basic characteristics and advantages



These top benefits speak for EURO-JET:

Greater flexibility

- Suitable for use by all window fabricators
- Manual and automated hardware installation possible.

More efficiency and convenience

- Fewer hardware components reduce costs in terms of material disposition, operations scheduling, and hardware installation.
- Reduced storage cost
- Time-saving installation
- Anti-slam device in the stay.
- The drive-gear is prepared for a clip-on fabricator's logo
- Solid drilling-jigs with funnel-shaped drill-bushings of hardened steel for stay-bearing, pivot-rest and drill-in hinge enable precise and efficient predrilling, making installation easier and preventing installation errors.
- Positively-locking drive-gear and stay-guide connection with the locking system.

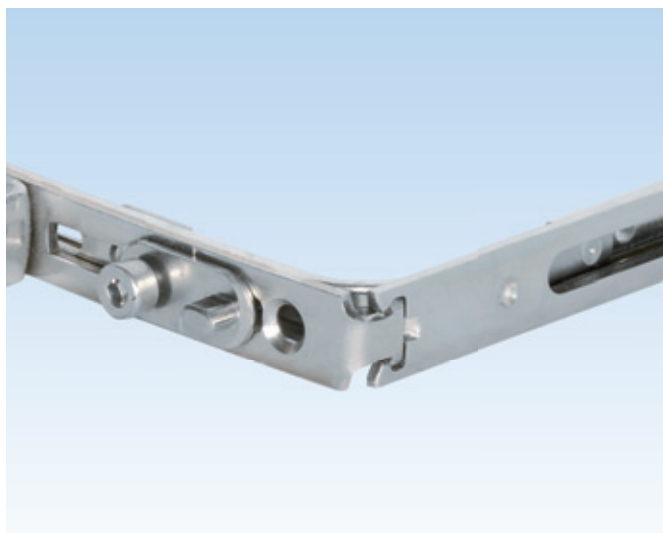
More quality

Surface quality is what counts. A well compounded finish lasts longer. Quality means more satisfaction.

- The finish that really got it! ferGUard*silver optimally and reliably protects all hardware parts against corrosion.

Further advantages

- Duplex locking cam with adjustable gasket pressure of ± 1 mm. The setting can be made with either a 4 or 6 mm Allen key.
- 5-year guarantee for the EURO-JET Tilt&Turn hardware range
- Set of cover caps also available in handy polythene bag
- Closed, slender, elegant design of the hinges: no visible screws or stay-bearing pins
- Reliable delivery due to modern logistics
- Competent technical advice from our in house and field service.
- Flush with the sash overlap
- Cover caps available in a large selection of colours



Optimum: positively-locking EURO-JET connection



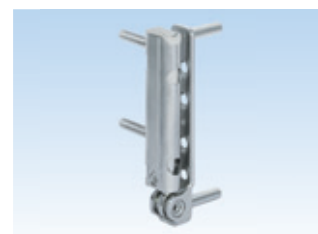
Decoupleable stay-hinge and stay-arm



Stay-arm mounted with stay-hinge and stay-bearing



Duplex locking cam with adjustable gasket pressure (± 1 mm). Adjustment with either 4 or 6 mm Allen key



Pivot-rest, drill-in hinge and adjusting cap

Product overview

Designation	Clearance [mm]	Sash overlap [mm]	Axis [mm]	Tested hardware load-bearing capacity [kg]	Max. sash rebate width [mm]	Max. sash rebate height [mm]	Version of pivot-rest with positioning pin [mm]
EURO-JET	12	18 / 20 / 22	9 / 13	100	1600	2450	3 mm and 6 mm \varnothing in diff. lengths

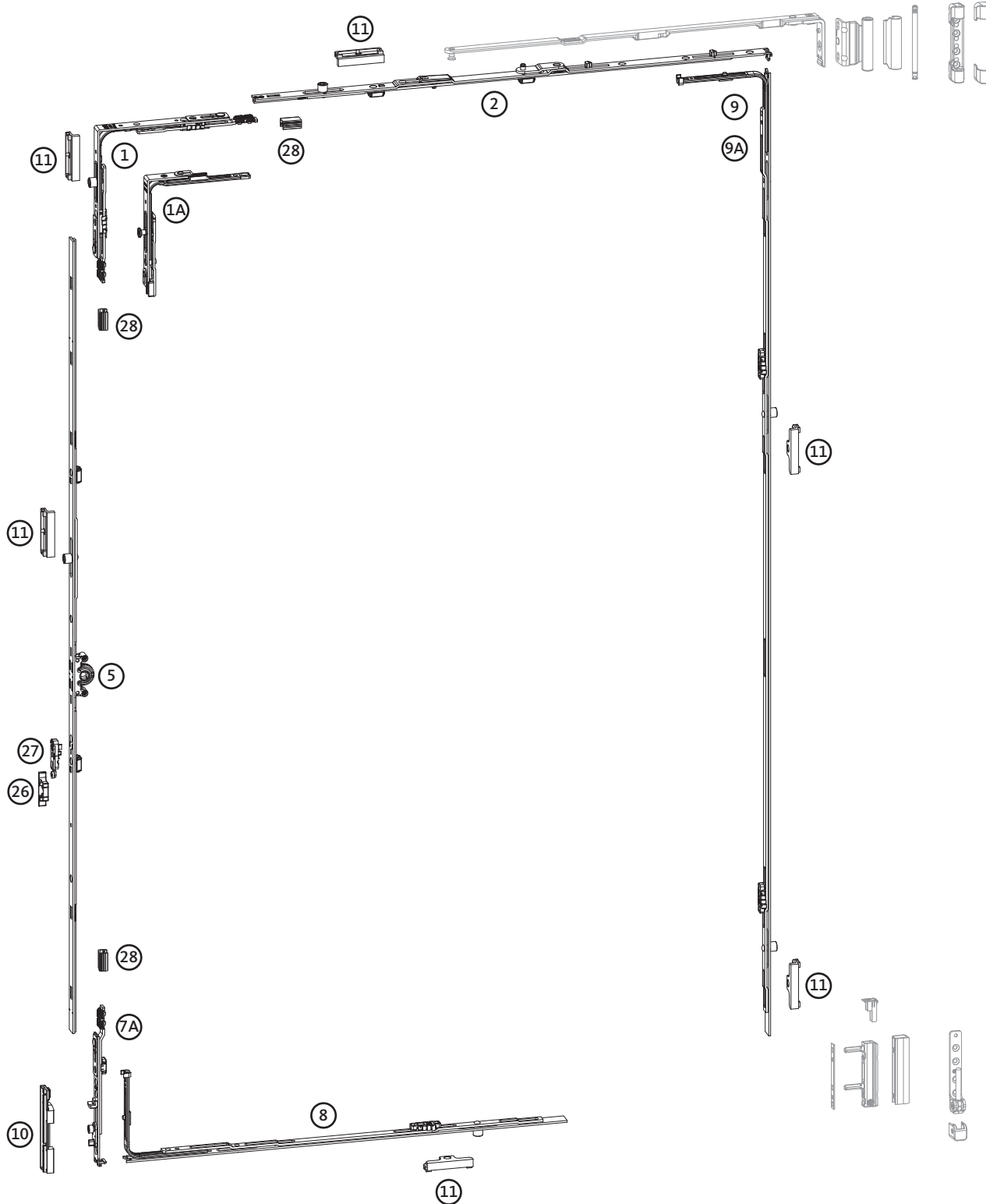
For all stated weights and dimensions, please refer to our application diagrams. For more information: www.g-u.com

EURO-JET Tilt&Turn hardware

1-sashed, variable handle height, axis 9 and 13 mm



max.
100 kg



Central locking system

Corner-drive

Item	SRW	Length	LC	Order number	PU
①	401-1600	160/160	1 [1]	6-35217-00-0-1	10
①A	280- 400	45/125	1 [2]	6-32238-00-0-1	10

[1] with Duplex locking cam
[2] with Cleverle locking cam

Stay-guide

Item	SRW	Length	LC	Order number	PU
②	280- 400 [1]	350	-	6-34995-03-0-1	10
	401- 500	350	-	6-34995-03-0-1	10
	501- 750	590	-	6-34995-06-0-1	10
	751-1000	840	1	6-34995-08-0-1	10
	951-1200	1040	1	6-34995-10-0-1	10
	1201-1450	1290	1	6-34995-12-0-1	10
	Additional stay				
	1301-1600 [2]			8-00734-00-0-1	10

[1] SRW 280-400 only with corner-drive S 6-32238
[2] SRW 1301-1600 use additional stay. Installation according to drawing no. 0.43291
Attention: can only be used in conjunction with stay-guide 6-34995-10

T&T drive-gear BS 15 – variable handle height

Item	SRH	Length	LC	G	Order number	PU
⑤	480- 590	270	-	240- 295	G-22080-00-0-1	10
	591- 750	430	-	295- 375	G-22081-00-0-1	10
	751-1200	880	1	375- 600	6-34212-00-0-1	10
	951-1450	1130	1	475- 725	6-34213-00-0-1	10
	1201-1700	1380	2	600- 850	6-34214-00-0-1	10
	1451-1950	1630	2	725- 975	6-34215-00-0-1	10
	1951-2450	2130	3	975-1225	6-34216-00-0-1	10

Bottom gear connector with side-tilter

Item	SRH	Order number	PU
⑦A	480- 590	6-32155-01-0-1	10
	591- 950	6-32155-02-0-1	10
	951-2450	6-32155-03-0-1	10

Centre lock - horizontal bottom

Item	SRW	Length	LC	Order number	PU
⑧	721-1100	530	1	6-34201-05-0-1	10
	1101-1350	740	1	6-34201-07-0-1	10
	1351-1600	1050	2	6-34201-10-0-1	10

Rod guide

Item	Description	Order number	PU
⑳	Rod guide (number as required) [1]	8-00805-00-0-0	100

[1] When cropping the faceplate less than 150 mm or when the notches are still visible after cropping, the rod guide should be positioned at least 65 mm before the faceplate end

Hinge-side centre lock – variable handle height

Item	SRH	Length	LC	Order number	PU
⑨	721-1100	530	1	6-34201-05-0-1	10
	1101-1350	740	1	6-34201-07-0-1	10
	1351-1700	1190	2	6-34201-12-0-1	10
	1701-2100	1450	2	6-34201-15-0-1	10
	2101-2450	1890	3	6-34201-19-0-1	10

Can be ordered alternatively

Item	SRH	Length	LC	Order number	PU
⑨A	721-1100	530	2	6-35596-05-0-1	10
	1101-1350	740	2	6-35596-07-0-1	10
	1351-1700	1190	3	6-35596-12-0-1	10
	1701-2100	1450	3	6-35596-15-0-1	10
	2101-2450	1890	4	6-35596-19-0-1	10

Frame components

Item	Description	Order number	PU
⑩	T&T striker [1]	profile-specific	100
⑪	Strikers [2]	profile-specific	100
⑳	Run-up stop for sash lifter [3]	profile-specific	100

[1] 1 pc.
[2] Number of strikers according to the total number of locking cams (LCs) of all components used
[3] In conjunction with sash lifter

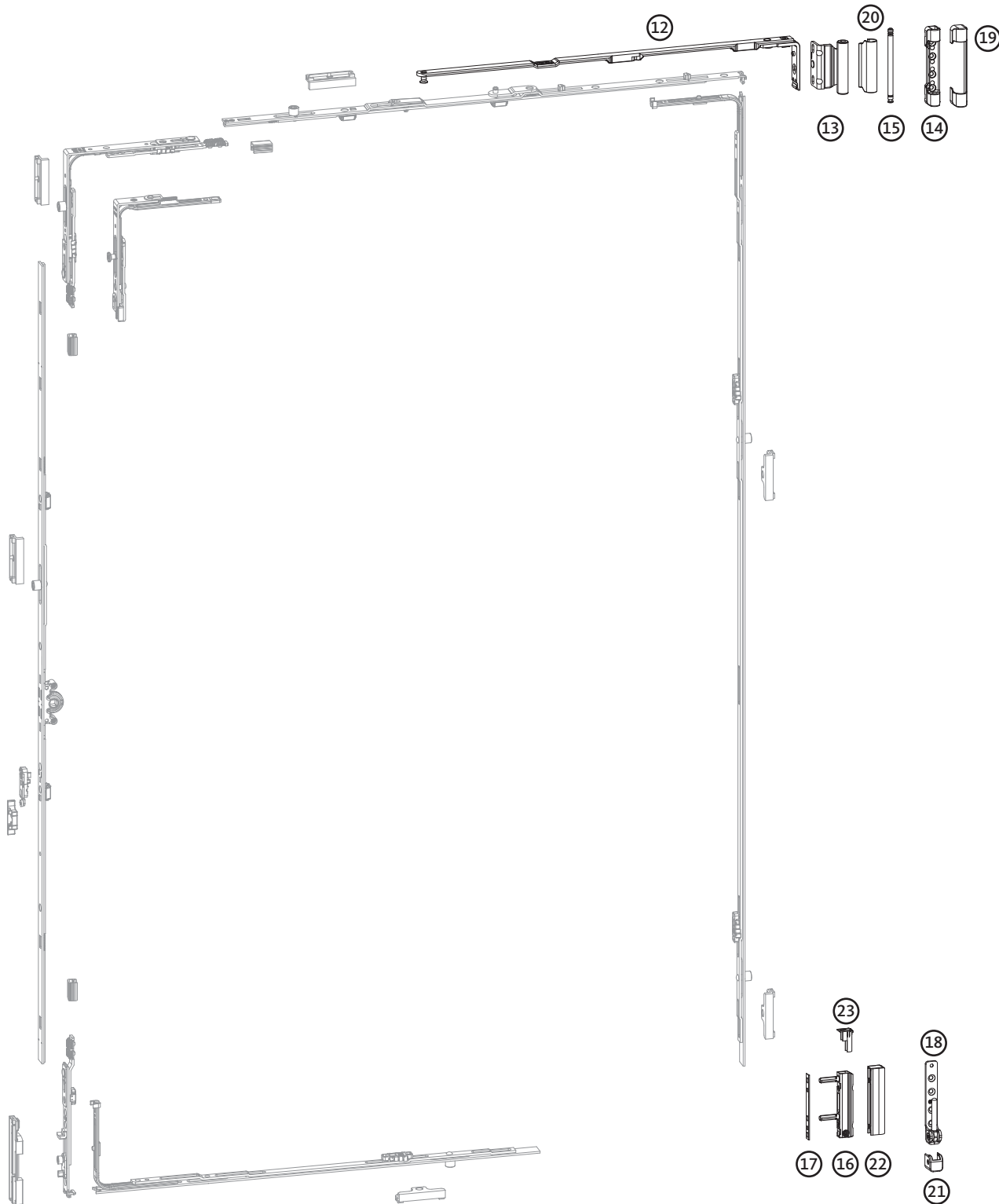
Optional: sash lifter

Item	Description	Order number	PU
㉑	Sash lifter with mishandling device [1]	6-29987-00-0-1	100

[1] Run-up stop is required

EURO-JET Tilt&Turn hardware

1-sashed, variable handle height, axis 9 and 13 mm



***Ordering example**

9-47334-01-0-□ cover cap for stay-bearing

Colour white

Colour

9-47334-01-0-□ = order number 9-47334-01-0-7

EURO-JET D Tilt&Turn hardware hinge side					
Item	Description	SRW	Order number	PU	Remarks
12	Tilt&Turn stay-arm	280- 500	6-36880-24-0-1	10	non-handed
		501- 750	6-36880-33-0-1	10	
		751-1200	6-36880-47-0-1	10	
		1201-1600	6-36880-63-0-1	10	
13	Stay-hinge	Axis 9		100	□□ Size according to sash overlap width 18, 20 or 22 mm
		6-36041-□□-0-1			
		Axis 13			
			6-36043-□□-0-1	100	
14	Stay-bearing, pin ø 3 mm, length = 2.5 mm		6-36026-03-0-1	100	
	Stay-bearing, pin ø 6 mm, length = 2.5 mm		6-36026-06-0-1	100	
15	Stay-bearing pin		9-48898-00-0-1	100	
16	Drill-in hinge, pin ø 6 mm, length = 23/23 mm		6-36180-01-0-1	100	
17	Packer for drill-in hinge	Pitch	Order number	PU	Remarks
		6°	9-48684-06-0-□	100	Colours: □ 5 = dark brown UC 5 □ 7 = traffic white RAL 9016
18	Pivot-rest up to 100 kg, pin ø 3 mm, length = 2.5 mm		6-36881-03-0-1	100	
	Pivot-rest up to 100 kg, pin ø 6 mm, length = 22 mm		6-36882-22-0-1	100	
19	Cover cap for stay-bearing	included in covers set K-18675-00-0-□	9-47334-01-0-□	100	Colours: □ 1 = silver EV1 (1N paint) □ 3N = brass colour (3N paint) □ 4 = medium bronze (4N paint) □ 5 = dark brown UC 5 □ 7 = traffic white RAL 9016
20	Cover cap for stay-hinge		9-47795-01-0-□	100	
21	Cover cap for pivot-rest		9-42683-00-0-□	100	
22	Cover cap for drill-in hinge		9-47783-01-0-□	100	
23	Adjusting cap		9-47426-00-0-1	100	

Order notes

- Load-bearing capacity of the hardware tested up to **100 kg** – see application diagram 0.45919
- Max. sash rebate width SRW 1600 mm
- Max. sash rebate height SRH 2450 mm

Installation drawings

- Central locking system: 0.44866
- Hinge side: 0.46740

Note

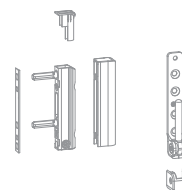
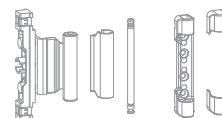
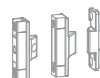
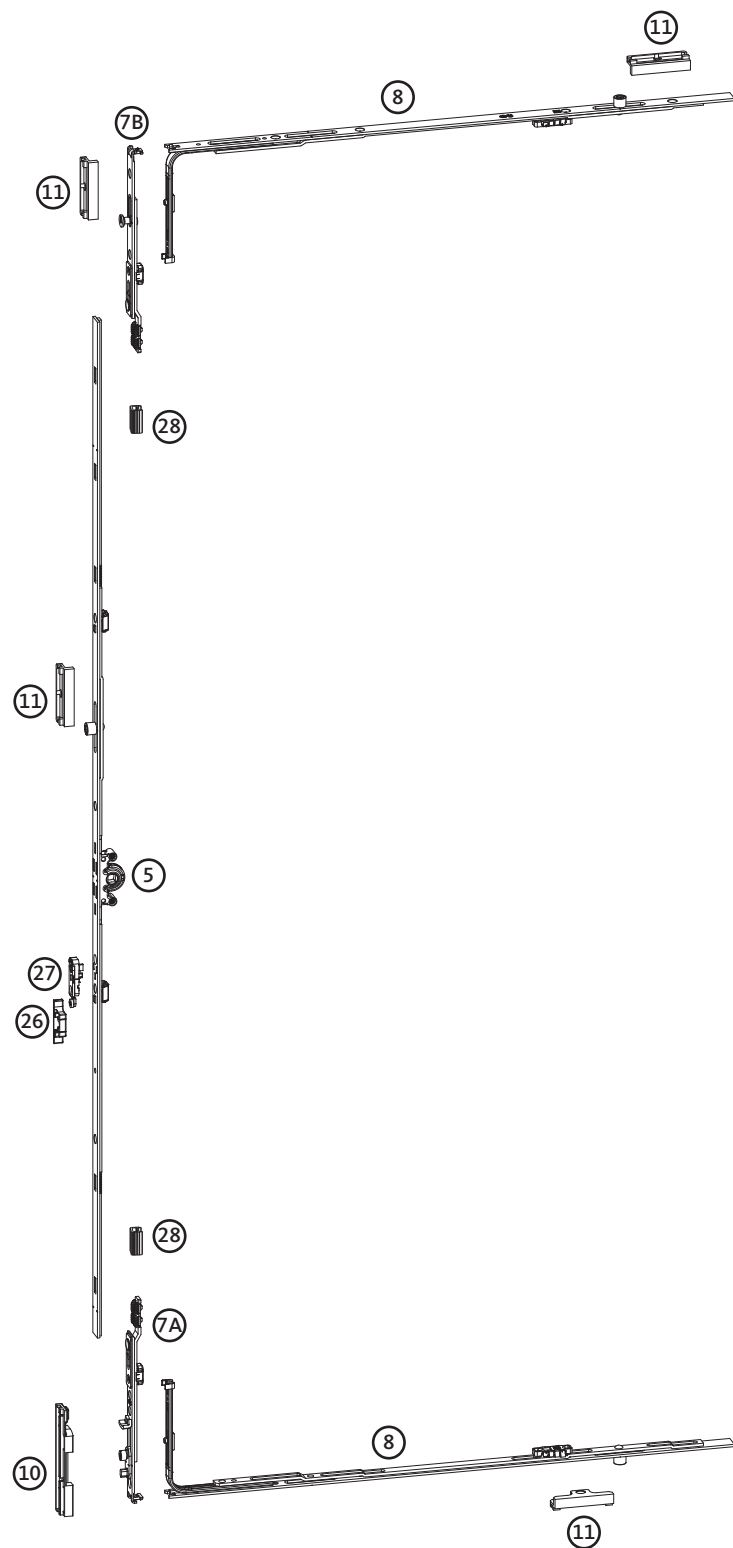
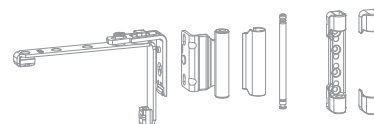
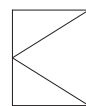
The product information of the system supplier, especially regarding design and fabrication, maximum sash dimensions and maximum sash weights as well as material qualities, e.g. linear expansions of profiles, must be observed.

EURO-JET Turn-Only hardware

1-sashed, variable handle height, axis 9 and 13 mm



max.
100 kg



T&T drive-gear BS 15 – variable handle height

Item	SRH	Length	LC	G	Order number	PU
⑤	480- 590	270	-	240- 295	G-22080-00-0-1	10
	591- 750	430	-	295- 375	G-22081-00-0-1	10
	751-1200	880	1	375- 600	6-34212-00-0-1	10
	951-1450	1130	1	475- 725	6-34213-00-0-1	10
	1201-1700	1380	2	600- 850	6-34214-00-0-1	10
	1451-1950	1630	2	725- 975	6-34215-00-0-1	10
	1951-2450	2130	3	975-1225	6-34216-00-0-1	10

Bottom gear connector with side-tilter

Item	Order number	PU
⑦A	6-32155-02-0-1	10

Extension piece 90° travel

Item	Order number	PU
⑦B	6-32104-00-0-1	100

Top and bottom centre lock

Item	SRW	Length	LC	Order number	PU
⑧	721-1100	530	1	6-34201-05-0-1	10
	1101-1350	740	1	6-34201-07-0-1	10
	1351-1600	1050	2	6-34201-10-0-1	10

Optional: sash lifter

Item	Description	Order number	PU
⑳	Sash lifter with mishandling device [1]	6-29987-00-0-1	100

[1] Run-up stop is required

Rod guide

Item	Description	Order number	PU
㉑	Rod guide (number as required) [1]	8-00805-00-0-0	100

[1] When cropping the faceplate less than 150 mm or when the notches are still visible after cropping, the rod guide should be positioned at least 65 mm before the faceplate end

Frame components

Item	Description	Order number	PU
㉒	T&T striker [1]	profile-specific	100
㉓	Strikers [2]	profile-specific	100
㉔	Run-up stop for sash lifter [3]	profile-specific	100

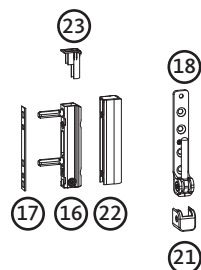
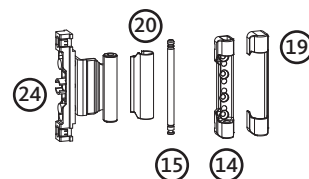
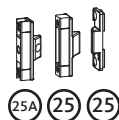
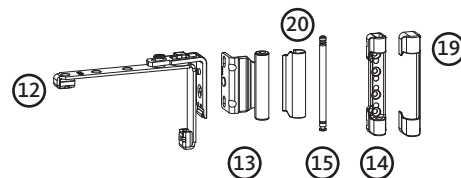
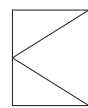
[1] 1 pc.

[2] Number of strikers according to the total number of locking cams (LCs) of all components used

[3] In conjunction with sash lifter

EURO-JET Turn-Only hardware

1-sashed, variable handle height, axis 9 and 13 mm



*Ordering example
 6-36044-□□-0-1 stay-hinge AX 13 mm
 Size 20 mm overlap

Size

6-36044-□□-0-1 = order number 6-36044-20-0-1

EURO-JET D hinge side Turn-Only hardware				
Item	Description	Order number	PU	Remarks
12	Turn-Only hinge	6-36848-00-0-1	10	non-handed
13	Stay-hinge	Axis 9		<input type="checkbox"/> Size according to sash overlap width 18, 20 or 22 mm The stay-hinges for Turn-Only sashes (6-36042/6-36044) have been designed with a lower axis than in the version for Tilt&Turn (6-36041/6-36043). This is to permit easier installation of the Turn-Only hinge in the hardware groove with the same tightness, as well as to allow the stay-bearing pin to be inserted more easily.
		6-36042- <input type="checkbox"/> <input type="checkbox"/> -0-1	100	
		Axis 13		
		6-36044- <input type="checkbox"/> <input type="checkbox"/> -0-1	100	
14	Stay-bearing, pin ø 3 mm, length = 2.5 mm	6-36026-03-0-1	100	
	Stay-bearing, pin ø 6 mm, length = 2.5 mm	6-36026-06-0-1	100	
15	Stay-bearing pin	9-48898-00-0-1	100	
16	Drill-in hinge, pin ø 6 mm, length = 23/23 mm	6-36180-01-0-1	100	
17	Packer for drill-in hinge	Pitch	Order number	PU
		6°	9-48684-06-0- <input type="checkbox"/>	100
				Colours: <input type="checkbox"/> 5 = dark brown UC 5 <input type="checkbox"/> 7 = traffic white RAL 9016
18	Pivot-rest up to 100 kg, pin ø 3 mm, length = 2.5 mm	6-36881-03-0-1	100	
	Pivot-rest up to 100 kg, pin ø 6 mm, length = 22 mm	6-36882-22-0-1	100	
19	Cover cap for stay-bearing	included in covers set K-18675-00-0- <input type="checkbox"/>	9-47334-01-0- <input type="checkbox"/>	100
20	Cover cap for stay-hinge		9-47795-01-0- <input type="checkbox"/>	100
21	Cover cap for pivot-rest		9-42683-00-0- <input type="checkbox"/>	100
22	Cover cap for drill-in hinge		9-47783-01-0- <input type="checkbox"/>	100
23	Adjusting cap	9-47426-00-0-1	100	
24	Centre rebate-hinge	Axis 9		from SRH 751 <input type="checkbox"/> Size according to sash overlap width 18, 20 or 22 mm
		6-36841- <input type="checkbox"/> <input type="checkbox"/> -0-1	100	
		Axis 13		
		6-36842- <input type="checkbox"/> <input type="checkbox"/> -0-1	100	
25	Centre-closer, concealed, sash part	9-40564-00-0-1	100	
	Centre-closer, concealed, frame part	profile-specific	100	
25A	Centre-closer, concealed, adjustable, sash part	6-34229-00-0-1	100	

Order notes

- Load-bearing capacity of the hardware tested up to **100 kg** – see application diagram 0.45919
- Max. sash rebate width SRW 1600 mm
- Max. sash rebate height SRH 2450 mm

Installation drawings

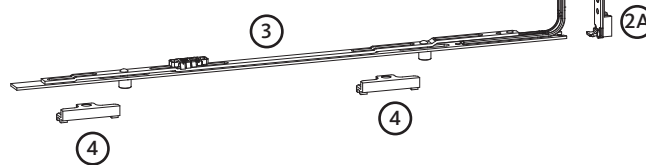
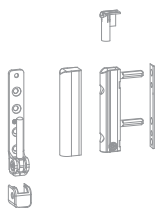
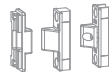
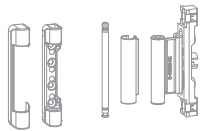
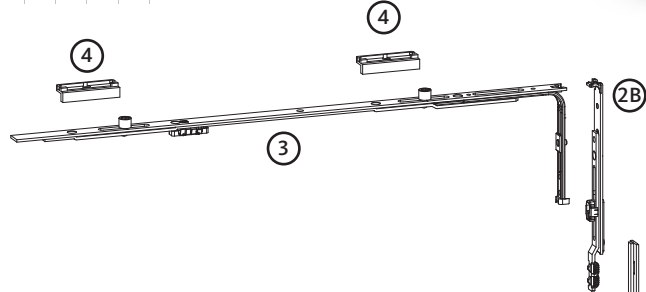
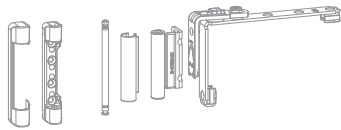
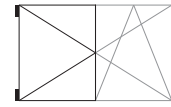
- Central locking system: 0.44866
- Hinge side: 0.46740

Note

The product information of the system supplier, especially regarding design and fabrication, maximum sash dimensions and maximum sash weights as well as material qualities, e.g. linear expansions of profiles, must be observed.

EURO-JET ZH passive-sash hardware

2-sashed, variable handle height, axis 9 and 13 mm



ZH lever-operated gear – variable handle height

Item	SRH		Order number	PU
①	741- 950		G-22170-00-0-1	10
	951-1450		G-22171-00-0-1	10
	1451-1950		G-22172-00-0-1	10
	1951-2450		G-22173-00-0-1	10

Gear connectors

Item	Description	Order number	PU
②A	Bottom gear connector	6-34998-00-0-1	100
②B	Top gear connector	6-32303-00-0-1	100

Top and bottom centre lock

Item	SRW	Length	LC	Order number	PU
③	-750	215	1	6-32010-00-0-1	10
	751-1350	530	2	6-35596-05-0-1	10
	1351-1600	740	2	6-35596-07-0-1	10

Rod guide

Item	Description	Order number	PU
②8	Rod guide (number as required) [1]	8-00805-00-0-0	100

[1] When cropping the faceplate less than 150 mm or when the notches are still visible after cropping, the rod guide should be positioned at least 65 mm before the faceplate end

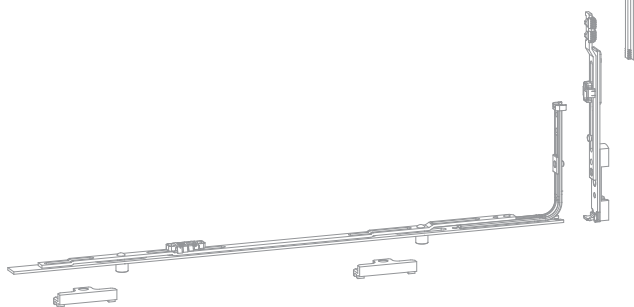
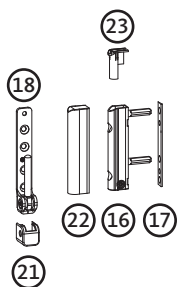
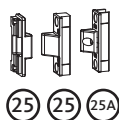
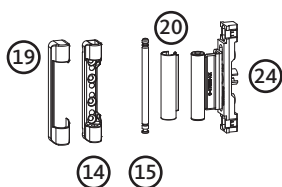
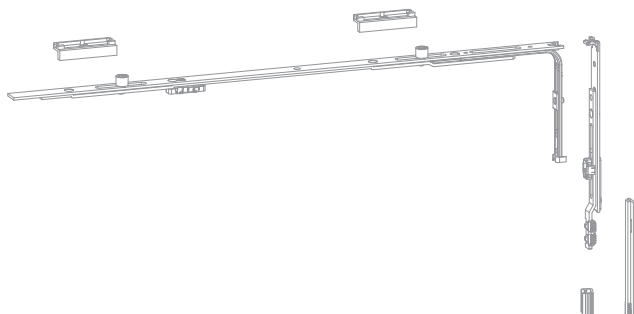
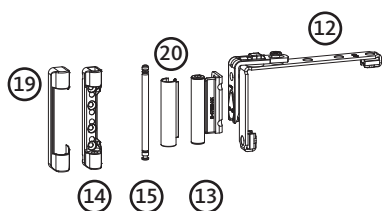
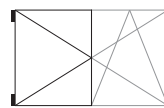
Frame components

Item	Description	Order number	PU
④	Strikers [1]	profile-specific	100

[1] Number of strikers according to the total number of locking cams (LCs) of all components used

EURO-JET ZH passive-sash hardware

2-sashed, variable handle height, axis 9 and 13 mm



***Ordering example**

9-47334-01-0-□ cover cap for stay-bearing

Colour white

Colour

9-47334-01-0-□ = order number 9-47334-01-0-7

Hinge side EURO-JET D passive-sash hardware				
Item	Description	Order number	PU	Remarks
12	Turn-Only hinge	6-36848-00-0-1	10	non-handed
13	Stay-hinge	Axis 9		<input type="checkbox"/> <input type="checkbox"/> Size according to sash overlap width 18, 20 or 22 mm The stay-hinges for Turn-Only sashes (6-36042/6-36044) have been designed with a lower axis than in the version for Tilt&Turn (6-36041/6-36043). This is to permit easier installation of the Turn-Only hinge in the hardware groove with the same tightness, as well as to allow the stay-bearing pin to be inserted more easily.
		6-36042- <input type="checkbox"/> <input type="checkbox"/> -0-1	100	
		Axis 13		
		6-36044- <input type="checkbox"/> <input type="checkbox"/> -0-1	100	
14	Stay-bearing, pin ø 3 mm, length = 2.5 mm	6-36026-03-0-1	100	
	Stay-bearing, pin ø 6 mm, length = 2.5 mm	6-36026-06-0-1	100	
15	Stay-bearing pin	9-48898-00-0-1	100	
16	Drill-in hinge, pin ø 6 mm, length = 23/23 mm	6-36180-01-0-1	100	
17	Packer for drill-in hinge	Pitch	Order number	PU
		6°	9-48684-06-0- <input type="checkbox"/>	100
				Colours: <input type="checkbox"/> 5 = dark brown UC 5 <input type="checkbox"/> 7 = traffic white RAL 9016
18	Pivot-rest up to 100 kg, pin ø 3 mm, length = 2.5 mm	6-36881-03-0-1	100	
	Pivot-rest up to 100 kg, pin ø 6 mm, length = 22 mm	6-36882-22-0-1	100	
19	Cover cap for stay-bearing	included in covers set K-18675-00-0- <input type="checkbox"/>	9-47334-01-0- <input type="checkbox"/>	100
20	Cover cap for stay-hinge		9-47795-01-0- <input type="checkbox"/>	100
21	Cover cap for pivot-rest		9-42683-00-0- <input type="checkbox"/>	100
22	Cover cap for drill-in hinge		9-47783-01-0- <input type="checkbox"/>	100
23	Adjusting cap	9-47426-00-0-1	100	
24	Centre rebate-hinge	Axis 9		from SRH 751 <input type="checkbox"/> <input type="checkbox"/> Size according to sash overlap width 18, 20 or 22 mm
		6-36841- <input type="checkbox"/> <input type="checkbox"/> -0-1	100	
		Axis 13		
		6-36842- <input type="checkbox"/> <input type="checkbox"/> -0-1	100	
25	Centre-closer, concealed, sash part	9-40564-00-0-1	100	
	Centre-closer, concealed, frame part	profile-specific	100	
25A	Centre-closer, concealed, adjustable, sash part	6-34229-00-0-1	100	

Order notes

- Load-bearing capacity of the hardware tested up to **100 kg** – see application diagram 0.45919
- Max. sash rebate width SRW 1600 mm
- Min. sash rebate height SRH 741 mm
- Max. sash rebate height SRH 2450 mm

Installation drawings

- Central locking system: 0.46573 + 0.44866
- Hinge side: 0.46740

Note

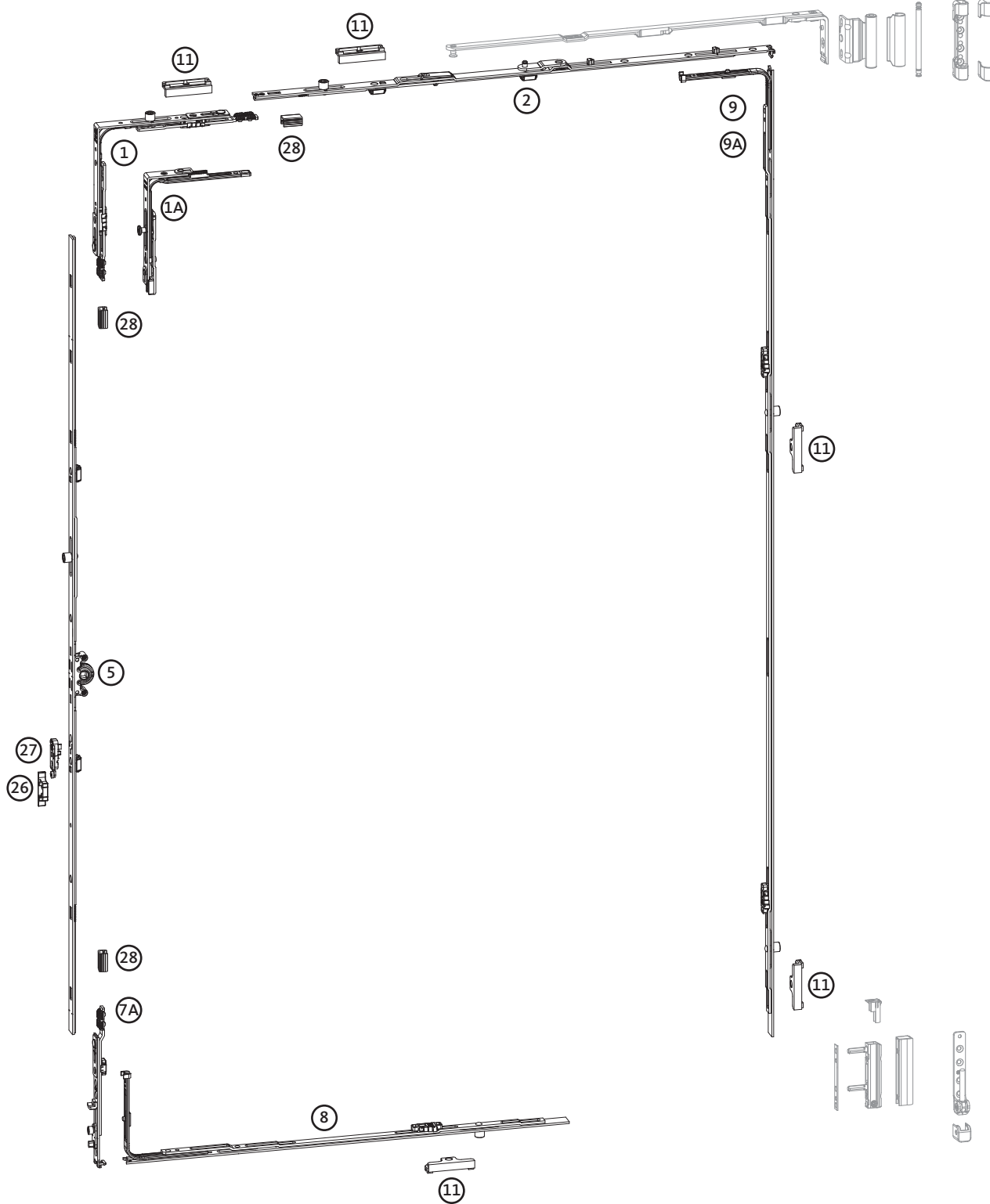
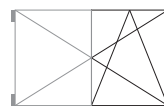
The product information of the system supplier, especially regarding design and fabrication, maximum sash dimensions and maximum sash weights as well as material qualities, e.g. linear expansions of profiles, must be observed.

EURO-JET Tilt&Turn hardware

2-sashed, variable handle height, axis 9 and 13 mm



max.
100 kg



Corner-drive

Item	SRW	Length	LC	Order number	PU
①	401-1600	160/160	1 [1]	6-35217-00-0-1	10
①A	280- 400	45/125	1 [2]	6-32238-00-0-1	10

[1] with Duplex locking cam

[2] with Cleverle locking cam

Stay-guide

Item	SRW	Length	LC	Order number	PU
②	280- 400 [1]	350	-	6-34995-03-0-1	10
	401- 500	350	-	6-34995-03-0-1	10
	501- 750	590	-	6-34995-06-0-1	10
	751-1000	840	1	6-34995-08-0-1	10
	951-1200	1040	1	6-34995-10-0-1	10
	1201-1450	1290	1	6-34995-12-0-1	10
Additional stay					
	1301-1600 [2]			8-00734-00-0-1	10

[1] SRW 280-400 only with corner-drive S 6-32238

[2] SRW 1301-1600 use additional stay. Installation according to drawing no. 0.43291
Attention: can only be used in conjunction with stay-guide 6-34995-10

T&T drive-gear BS 15 – variable handle height

Item	SRH	Length	LC	G	Order number	PU
⑤	480- 590	270	-	240- 295	G-22080-00-0-1	10
	591- 750	430	-	295- 375	G-22081-00-0-1	10
	751-1200	880	1	375- 600	6-34212-00-0-1	10
	951-1450	1130	1	475- 725	6-34213-00-0-1	10
	1201-1700	1380	2	600- 850	6-34214-00-0-1	10
	1451-1950	1630	2	725- 975	6-34215-00-0-1	10
	1951-2450	2130	3	975-1225	6-34216-00-0-1	10

Bottom gear connector with side-tilter

Item	SRH	Order number	PU
⑦A	480- 590	6-32155-01-0-1	10
	591- 950	6-32155-02-0-1	10
	951-2450	6-32155-03-0-1	10

Rod guide

Item	Description	Order number	PU
②8	Rod guide (number as required) [1]	8-00805-00-0-0	100

[1] When cropping the faceplate less than 150 mm or when the notches are still visible after cropping, the rod guide should be positioned at least 65 mm before the faceplate end

Centre lock - horizontal bottom

Item	SRW	Length	LC	Order number	PU
⑧	721-1100	530	1	6-34201-05-0-1	10
	1101-1350	740	1	6-34201-07-0-1	10
	1351-1600	1050	2	6-34201-10-0-1	10

Hinge-side centre lock – variable handle height

Item	SRH	Length	LC	Order number	PU
⑨	721-1100	530	1	6-34201-05-0-1	10
	1101-1350	740	1	6-34201-07-0-1	10
	1351-1700	1190	2	6-34201-12-0-1	10
	1701-2100	1450	2	6-34201-15-0-1	10
	2101-2450	1890	3	6-34201-19-0-1	10

Can be ordered alternatively

⑨A	721-1100	530	2	6-35596-05-0-1	10
	1101-1350	740	2	6-35596-07-0-1	10
	1351-1700	1190	3	6-35596-12-0-1	10
	1701-2100	1450	3	6-35596-15-0-1	10
	2101-2450	1890	4	6-35596-19-0-1	10

Optional: sash lifter

Item	Description	Order number	PU
②7	Sash lifter with mishandling device [1]	6-29987-00-0-1	100

[1] Run-up stop is required

Frame components

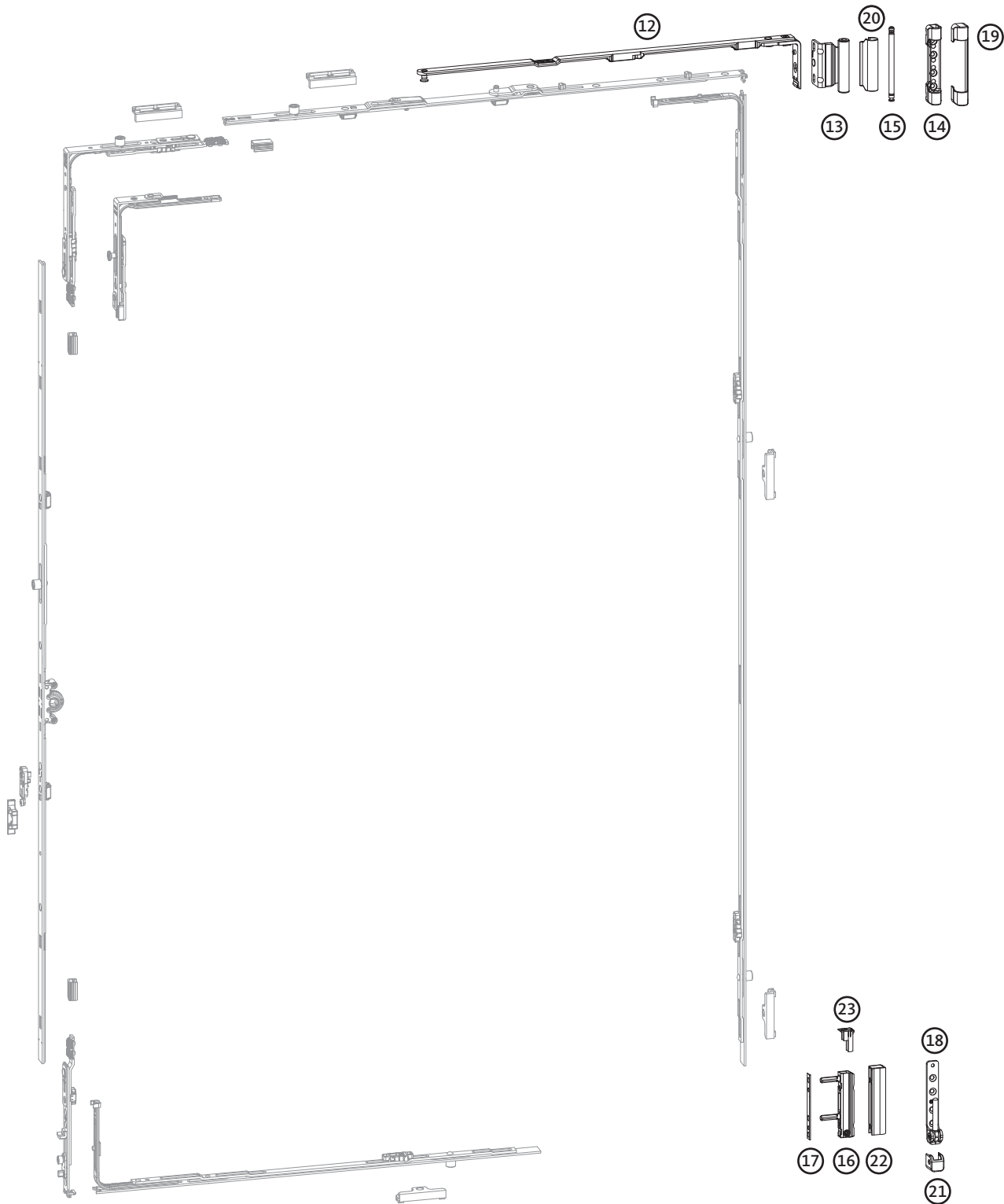
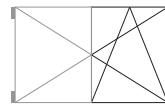
Item	Description	Order number	PU
①1	Strikers [1]	profile-specific	100
②6	Run-up stop for sash lifter [2]	profile-specific	100

[1] Number of strikers according to the total number of locking cams (LCs) of all components used

[2] In conjunction with sash lifter

EURO-JET Tilt&Turn hardware

2-sashed, variable handle height, axis 9 and 13 mm



***Ordering example**

6-36041-□□-0-1 stay-hinge AX 9 mm

Size 20 mm overlap

Size

6-36041-□□-0-1 = order number 6-36041-20-0-1

EURO-JET D Tilt&Turn hardware hinge side					
Item	Description	SRW	Order number	PU	Remarks
⑫	Tilt&Turn stay-arm	280- 500	6-36880-24-0-1	10	non-handed
		501- 750	6-36880-33-0-1	10	
		751-1200	6-36880-47-0-1	10	
		1201-1600	6-36880-63-0-1	10	
⑬	Stay-hinge	Axis 9		100	□□ Size according to sash overlap width 18, 20 or 22 mm
		6-36041-□□-0-1			
		Axis 13			
			6-36043-□□-0-1	100	
⑭	Stay-bearing, pin ø 3 mm, length = 2.5 mm		6-36026-03-0-1	100	
	Stay-bearing, pin ø 6 mm, length = 2.5 mm		6-36026-06-0-1	100	
⑮	Stay-bearing pin		9-48898-00-0-1	100	
⑯	Drill-in hinge, pin ø 6 mm, length = 23/23 mm		6-36180-01-0-1	100	
⑰	Packer for drill-in hinge	Pitch	Order number	PU	Remarks
		6°	9-48684-06-0-□	100	Colours: □ 5 = dark brown UC 5 □ 7 = traffic white RAL 9016
⑱	Pivot-rest up to 100 kg, pin ø 3 mm, length = 2.5 mm		6-36881-03-0-1	100	
	Pivot-rest up to 100 kg, pin ø 6 mm, length = 22 mm		6-36882-22-0-1	100	
⑲	Cover cap for stay-bearing	included in covers set K-18675-00-0-□	9-47334-01-0-□	100	Colours: □ 1 = silver EV1 (1N paint) □ 3N = brass colour (3N paint) □ 4 = medium bronze (4N paint) □ 5 = dark brown UC 5 □ 7 = traffic white RAL 9016
⑳	Cover cap for stay-hinge		9-47795-01-0-□	100	
㉑	Cover cap for pivot-rest		9-42683-00-0-□	100	
㉒	Cover cap for drill-in hinge		9-47783-01-0-□	100	
㉓	Adjusting cap		9-47426-00-0-1	100	

Order notes

- Load-bearing capacity of the hardware tested up to **100 kg** – see application diagram 0.45919
- Max. sash rebate width SRW 1600 mm
- Max. sash rebate height SRH 2450 mm

Installation drawings

- Central locking system: 0.46573 + 0.44866
- Hinge side: 0.46740

Note

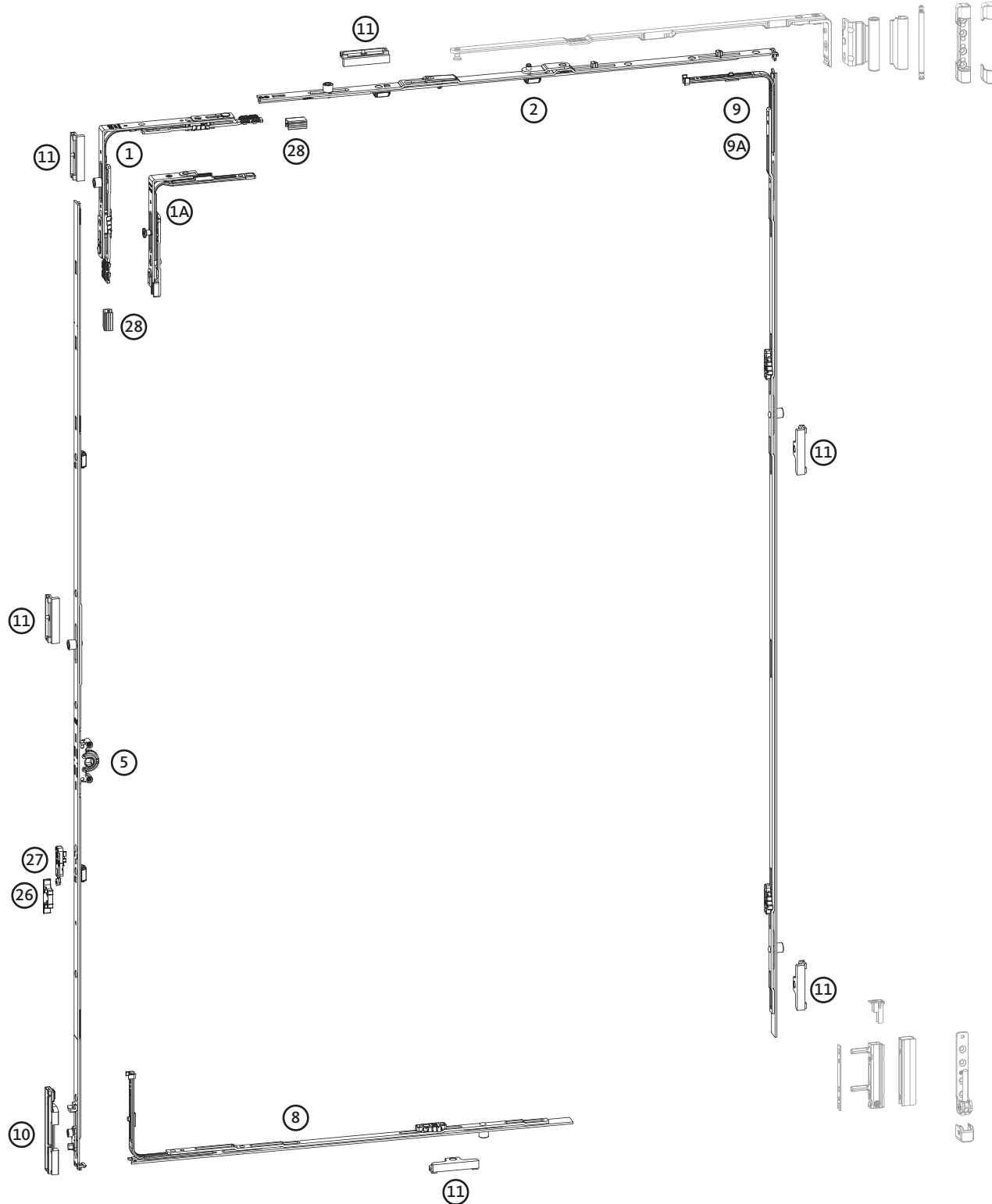
The product information of the system supplier, especially regarding design and fabrication, maximum sash dimensions and maximum sash weights as well as material qualities, e.g. linear expansions of profiles, must be observed.

EURO-JET Tilt&Turn hardware

1-sashed, fixed handle height, axis 9 and 13 mm



max.
100 kg



Central locking system

Corner-drive

Item	SRW	Length	LC	Order number	PU
①	401-1600	160/160	1 [1]	6-35217-00-0-1	10
①A	280- 400	45/125	1 [2]	6-32238-00-0-1	10

- [1] with Duplex locking cam
[2] with Cleverle locking cam

Stay-guide

Item	SRW	Length	LC	Order number	PU
②	280- 400	350	-	6-34995-03-0-1	10
	401- 500	350	-	6-34995-03-0-1	10
	501- 750	590	-	6-34995-06-0-1	10
	751-1000	840	1	6-34995-08-0-1	10
	951-1200	1040	1	6-34995-10-0-1	10
	1201-1450	1290	1	6-34995-12-0-1	10
	Additional stay				
	1301-1600			8-00734-00-0-1	10

- [1] SRW 280-400 only with corner-drive S 6-32238
[2] SRW 1301-1600 use additional stay. Installation according to drawing no. 0.43291
Attention: can only be used in conjunction with stay-guide 6-34995-10

T&T drive-gear BS 15 – fixed handle height

Item	SRH	Length	LC	G	Order number	PU
⑤	360- 490 [1]	363	-	155	G-22000-00-0-1	10
	450- 550	390	-	155	G-22001-00-0-1	10
	551- 720	560	-	200	G-22002-00-0-1	10
	721- 850	690	1	250	6-34219-03-0-1	10
	851-1100	940	1	400	6-34219-04-0-1	10
	1101-1350	1190	1	500	6-34219-05-0-1	10
	1351-1600	1440	2	600	6-34219-07-0-1	10
	1601-1850	1690	3	600	6-34219-08-0-1	10
	1851-2100	1940	3	980	6-34219-13-0-1	10
	2101-2350	2190	4	980	6-34219-14-0-1	10

- [1] SRH 360-450 only with anti-slam device with reduced tilt angle 9-38688-33

Rod guide

Item	Description	Order number	PU
②8	Rod guide (number as required) [1]	8-00805-00-0-0	100

- [1] When cropping the faceplate less than 150 mm or when the notches are still visible after cropping, the rod guide should be positioned at least 65 mm before the faceplate end

Centre lock - horizontal bottom

Item	SRW	Length	LC	Order number	PU
⑧	721-1100	530	1	6-34201-05-0-1	10
	1101-1350	740	1	6-34201-07-0-1	10
	1351-1600	1050	2	6-34201-10-0-1	10

Hinge-side centre lock – fixed handle height

Item	SRW	Length	LC	Order number	PU
⑨	721-1100	530	1	6-34201-05-0-1	10
	1101-1350	740	1	6-34201-07-0-1	10
	1351-1850	1190	2	6-34201-12-0-1	10
	1851-2100	1450	2	6-34201-15-0-1	10
	2101-2350	1890	3	6-34201-19-0-1	10

Can be ordered alternatively

⑨A	721-1100	530	2	6-35596-05-0-1	10
	1101-1350	740	2	6-35596-07-0-1	10
	1351-1850	1190	3	6-35596-12-0-1	10
	1851-2100	1450	3	6-35596-15-0-1	10
	2101-2350	1890	4	6-35596-19-0-1	10

Optional: sash lifter

Item	Description	Order number	PU
②7	Sash lifter with mishandling device [1]	6-29987-00-0-1	100

- [1] Run-up stop is required

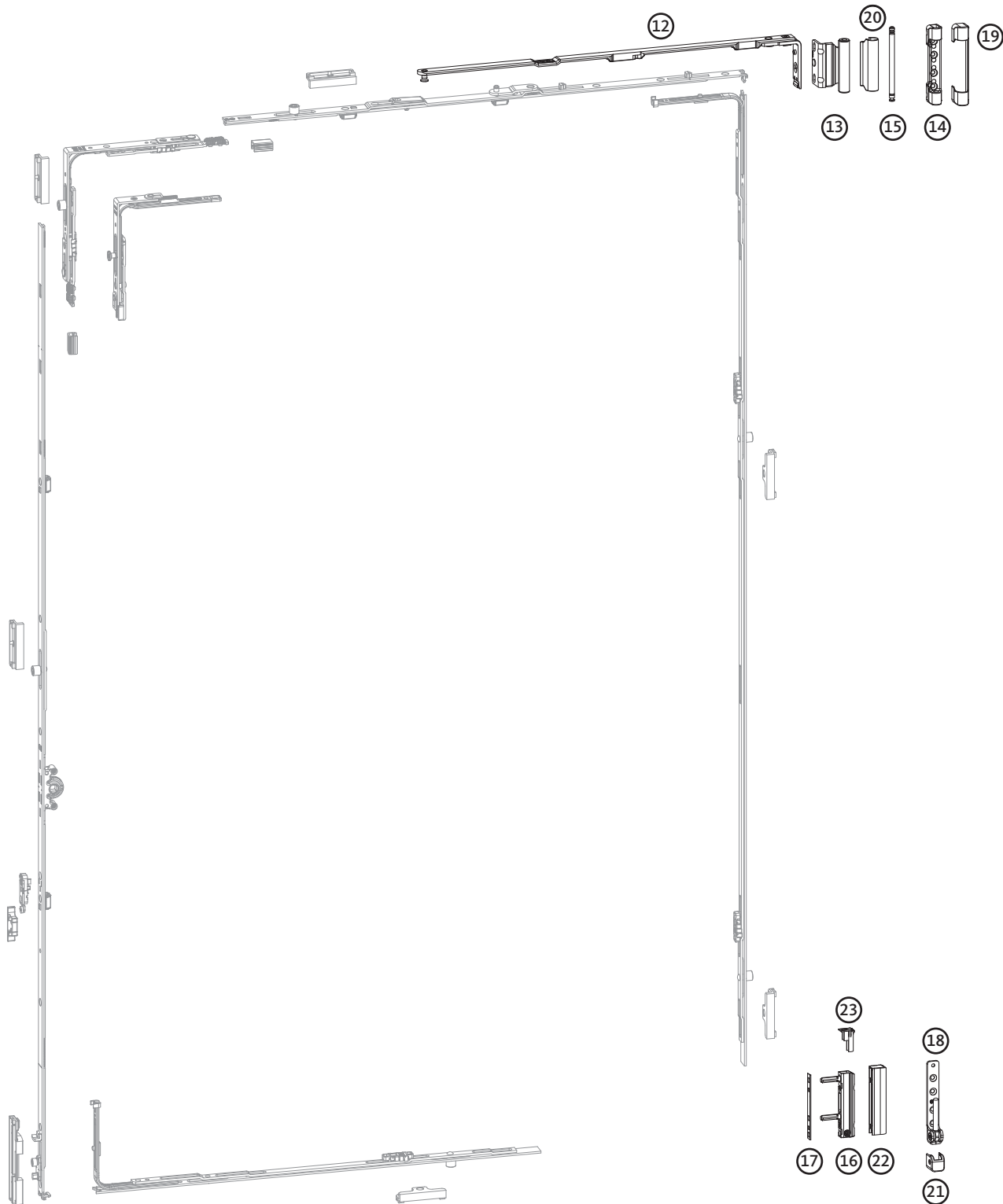
Frame components

Item	Description	Order number	PU
⑩	T&T striker [1]	profile-specific	100
⑪	Strikers [2]	profile-specific	100
②6	Run-up stop for sash lifter [3]	profile-specific	100

- [1] 1 pc.
[2] Number of strikers according to the total number of locking cams (LCs) of all components used
[3] In conjunction with sash lifter

EURO-JET Tilt&Turn hardware

1-sashed, fixed handle height, axis 9 and 13 mm



***Ordering example**

9-47334-01-0-□ cover cap for stay-bearing

Colour white

Colour

9-47334-01-0-□ = order number 9-47334-01-0-7

EURO-JET D Tilt&Turn hardware hinge side					
Item	Description	SRW	Order number	PU	Remarks
⑫	Tilt&Turn stay-arm	280- 500	6-36880-24-0-1	10	non-handed
		501- 750	6-36880-33-0-1	10	
		751-1200	6-36880-47-0-1	10	
		1201-1600	6-36880-63-0-1	10	
⑬	Stay-hinge	Axis 9		100	□□ Size according to sash overlap width 18, 20 or 22 mm
		6-36041-□□-0-1			
		Axis 13			
			6-36043-□□-0-1	100	
⑭	Stay-bearing, pin ø 3 mm, length = 2.5 mm		6-36026-03-0-1	100	
	Stay-bearing, pin ø 6 mm, length = 2.5 mm		6-36026-06-0-1	100	
⑮	Stay-bearing pin		9-48898-00-0-1	100	
⑯	Drill-in hinge, pin ø 6 mm, length = 23/23 mm		6-36180-01-0-1	100	
⑰	Packer for drill-in hinge	Pitch	Order number	PU	Remarks
		6°	9-48684-06-0-□	100	Colours: □ 5 = dark brown UC 5 □ 7 = traffic white RAL 9016
⑱	Pivot-rest up to 100 kg, pin ø 3 mm, length = 2.5 mm		6-36881-03-0-1	100	
	Pivot-rest up to 100 kg, pin ø 6 mm, length = 22 mm		6-36882-22-0-1	100	
⑲	Cover cap for stay-bearing	included in covers set K-18675-00-0-□	9-47334-01-0-□	100	Colours: □ 1 = silver EV1 (1N paint) □ 3N = brass colour (3N paint) □ 4 = medium bronze (4N paint) □ 5 = dark brown UC 5 □ 7 = traffic white RAL 9016
⑳	Cover cap for stay-hinge		9-47795-01-0-□	100	
㉑	Cover cap for pivot-rest		9-42683-00-0-□	100	
㉒	Cover cap for drill-in hinge		9-47783-01-0-□	100	
㉓	Adjusting cap		9-47426-00-0-1	100	

Order notes

- Load-bearing capacity of the hardware tested up to **100 kg** – see application diagram 0.45919
- Max. sash rebate width SRW 1600 mm
- Max. sash rebate height SRH 2350 mm

Installation drawings

- Central locking system: 0.44866
- Hinge side: 0.46740

Note

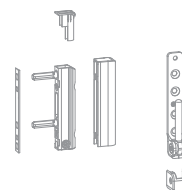
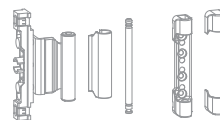
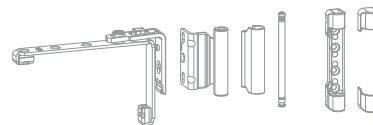
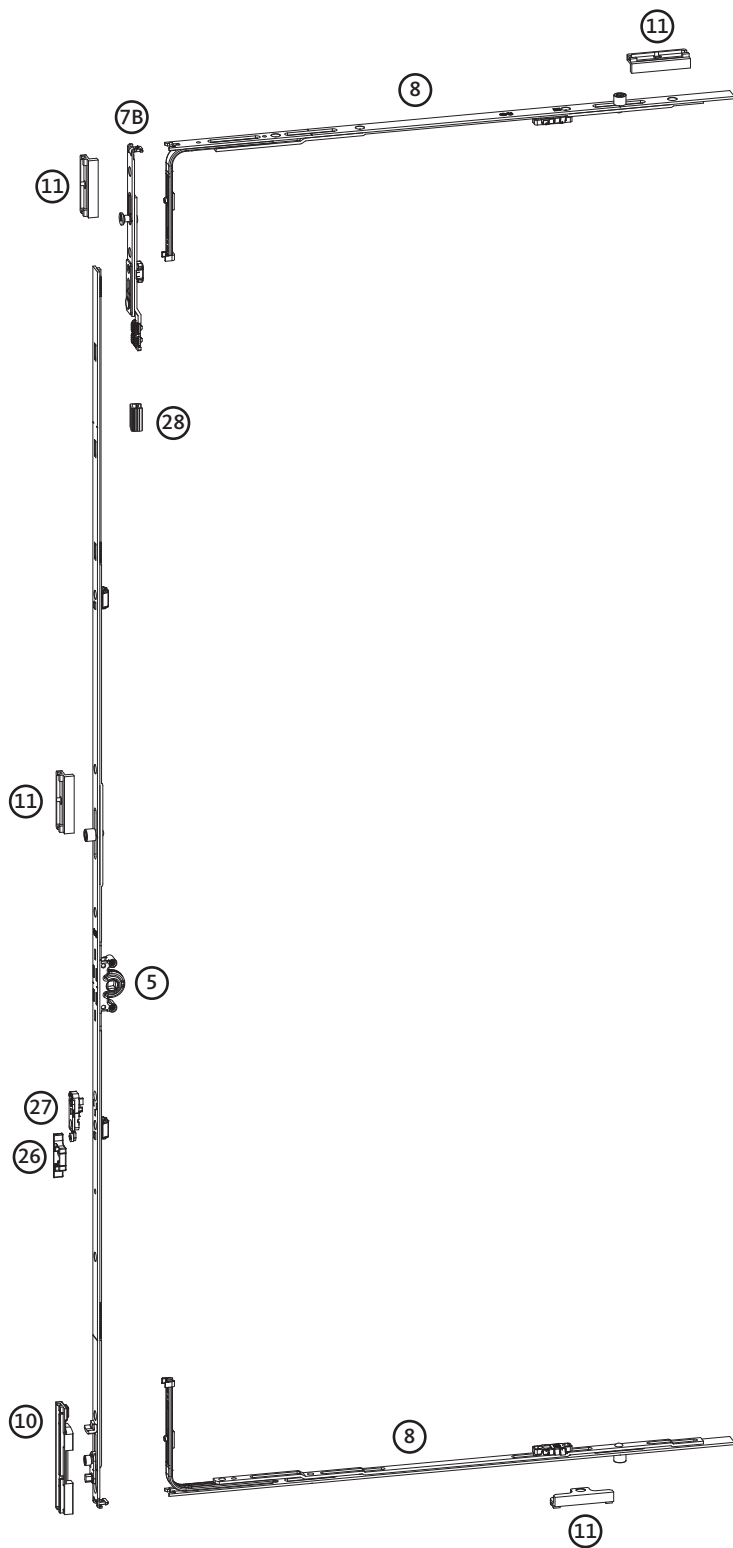
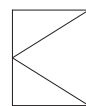
The product information of the system supplier, especially regarding design and fabrication, maximum sash dimensions and maximum sash weights as well as material qualities, e.g. linear expansions of profiles, must be observed.

EURO-JET Turn-Only hardware

1-sashed, fixed handle height, axis 9 and 13 mm



max.
100 kg



T&T drive-gear BS 15 – fixed handle height

Item	SRH	Length	LC	G	Order number	PU
⑤	360- 490 [1]	363	–	155	G-22000-00-0-1	10
	450- 550	390	–	155	G-22001-00-0-1	10
	551- 720	560	–	200	G-22002-00-0-1	10
	721- 850	690	1	250	6-34219-03-0-1	10
	851-1100	940	1	400	6-34219-04-0-1	10
	1101-1350	1190	1	500	6-34219-05-0-1	10
	1351-1600	1440	2	600	6-34219-07-0-1	10
	1601-1850	1690	3	600	6-34219-08-0-1	10
	1851-2100	1940	3	980	6-34219-13-0-1	10
	2101-2350	2190	4	980	6-34219-14-0-1	10

[1] SRH 360-450 only with anti-slam device with reduced tilt angle 9-38688-33

Frame components

Item	Description	Order number	PU
⑩	T&T striker [1]	profile-specific	100
⑪	Strikers [2]	profile-specific	100
⑫	Run-up stop for sash lifter [3]	profile-specific	100

[1] 1 pc.
 [2] Number of strikers according to the total number of locking cams (LCs) of all components used
 [3] In conjunction with sash lifter

Extension piece 90° travel

Item	Order number	PU
⑦B	6-32104-00-0-1	100

Top and bottom centre lock

Item	SRW	Length	LC	Order number	PU
⑧	721-1100	530	1	6-34201-05-0-1	10
	1101-1350	740	1	6-34201-07-0-1	10
	1351-1600	1050	2	6-34201-10-0-1	10

Optional: sash lifter

Item	Description	Order number	PU
⑳	Sash lifter with mishandling device [1]	6-29987-00-0-1	100

[1] Run-up stop is required

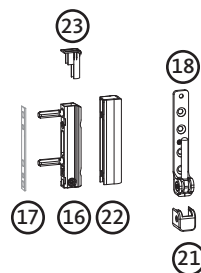
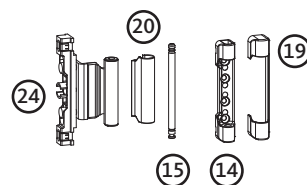
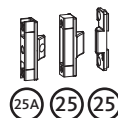
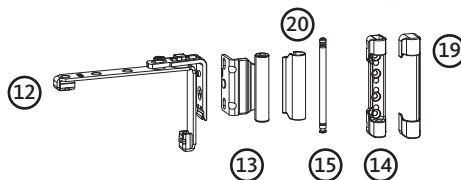
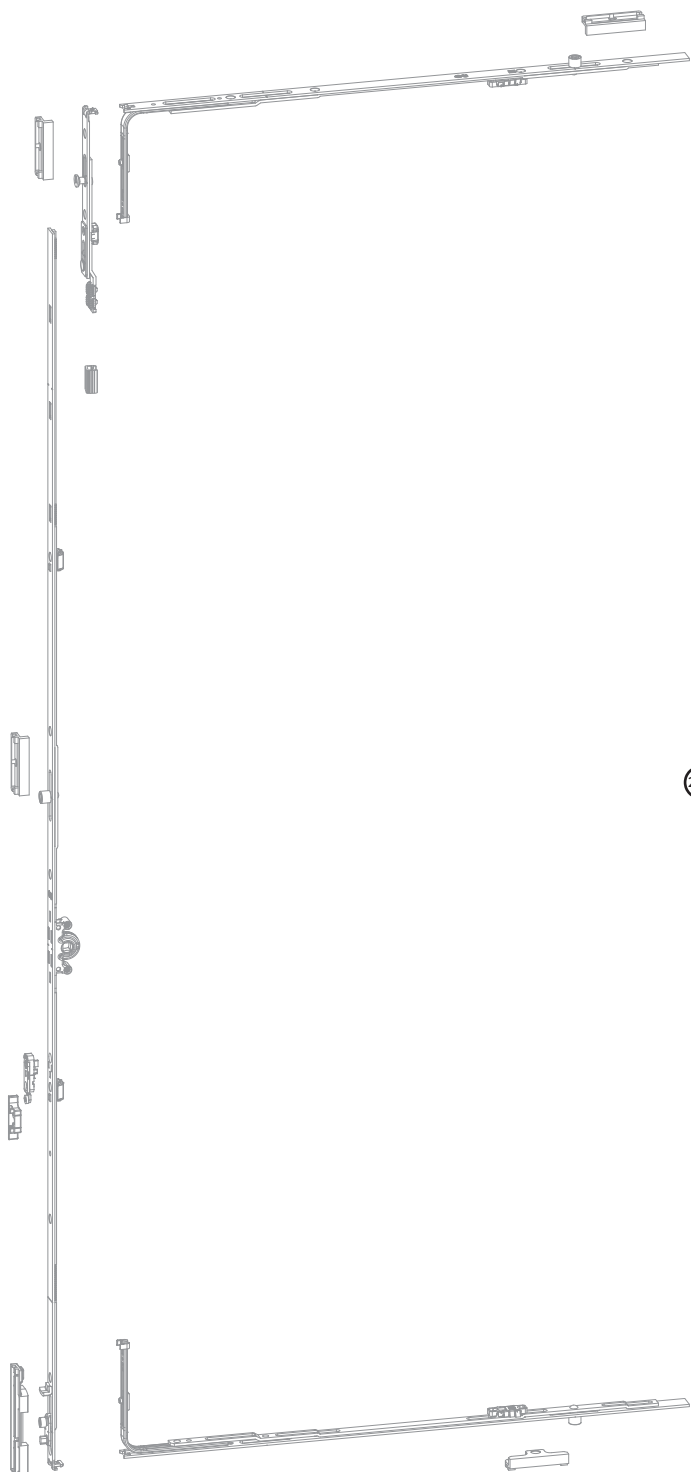
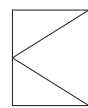
Rod guide

Item	Description	Order number	PU
㉑	Rod guide (number as required) [1]	8-00805-00-0-0	100

[1] When cropping the faceplate less than 150 mm or when the notches are still visible after cropping, the rod guide should be positioned at least 65 mm before the faceplate end

EURO-JET Turn-Only hardware

1-sashed, fixed handle height, axis 9 and 13 mm



***Ordering example**

6-36044-□□-0-1 stay-hinge AX 13 mm

Size 20 mm overlap

Size

6-36044-□□-0-1 = order number 6-36044-20-0-1

EURO-JET D hinge side Turn-Only hardware				
Item	Description	Order number	PU	Remarks
12	Turn-Only hinge	6-36848-00-0-1	10	non-handed
13	Stay-hinge	Axis 9		<input type="checkbox"/> <input type="checkbox"/> Size according to sash overlap width 18, 20 or 22 mm The stay-hinges for Turn-Only sashes (6-36042/6-36044) have been designed with a lower axis than in the version for Tilt&Turn (6-36041/6-36043). This is to permit easier installation of the Turn-Only hinge in the hardware groove with the same tightness, as well as to allow the stay-bearing pin to be inserted more easily.
		6-36042- <input type="checkbox"/> <input type="checkbox"/> -0-1	100	
		Axis 13		
		6-36044- <input type="checkbox"/> <input type="checkbox"/> -0-1	100	
14	Stay-bearing, pin ø 3 mm, length = 2.5 mm	6-36026-03-0-1	100	
	Stay-bearing, pin ø 6 mm, length = 2.5 mm	6-36026-06-0-1	100	
15	Stay-bearing pin	9-48898-00-0-1	100	
16	Drill-in hinge, pin ø 6 mm, length = 23/23 mm	6-36180-01-0-1	100	
17	Packer for drill-in hinge	Pitch	Order number	PU
		6°	9-48684-06-0- <input type="checkbox"/>	100
				Colours: <input type="checkbox"/> 5 = dark brown UC 5 <input type="checkbox"/> 7 = traffic white RAL 9016
18	Pivot-rest up to 100 kg, pin ø 3 mm, length = 2.5 mm	6-36881-03-0-1	100	
	Pivot-rest up to 100 kg, pin ø 6 mm, length = 22 mm	6-36882-22-0-1	100	
19	Cover cap for stay-bearing	included in covers set K-18675-00-0- <input type="checkbox"/>	9-47334-01-0- <input type="checkbox"/>	100
20	Cover cap for stay-hinge		9-47795-01-0- <input type="checkbox"/>	100
21	Cover cap for pivot-rest		9-42683-00-0- <input type="checkbox"/>	100
22	Cover cap for drill-in hinge		9-47783-01-0- <input type="checkbox"/>	100
23	Adjusting cap	9-47426-00-0-1	100	
24	Centre rebate-hinge	Axis 9		from SRH 751 <input type="checkbox"/> <input type="checkbox"/> Size according to sash overlap width 18, 20 or 22 mm
		6-36841- <input type="checkbox"/> <input type="checkbox"/> -0-1	100	
		Axis 13		
		6-36842- <input type="checkbox"/> <input type="checkbox"/> -0-1	100	
25	Centre-closer, concealed, sash part	9-40564-00-0-1	100	
	Centre-closer, concealed, frame part	profile-specific	100	
25A	Centre-closer, concealed, adjustable, sash part	6-34229-00-0-1	100	

Order notes

- Load-bearing capacity of the hardware tested up to **100 kg** – see application diagram 0.45919
- Max. sash rebate width SRW 1600 mm
- Max. sash rebate height SRH 2350 mm

Installation drawings

- Central locking system: 0.44866
- Hinge side: 0.46740

Note

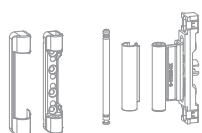
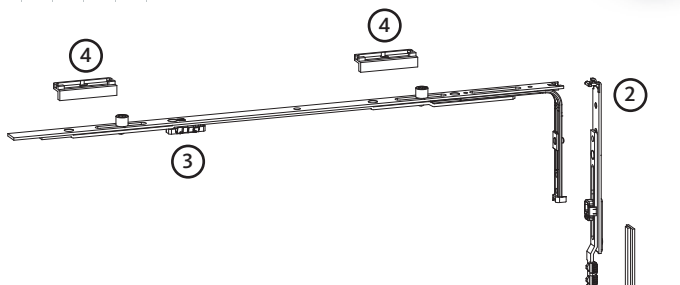
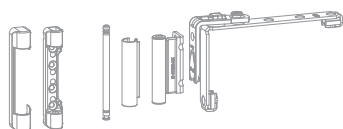
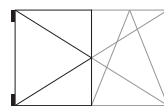
The product information of the system supplier, especially regarding design and fabrication, maximum sash dimensions and maximum sash weights as well as material qualities, e.g. linear expansions of profiles, must be observed.

EURO-JET ZH passive-sash hardware

2-sashed, fixed handle height, axis 9 and 13 mm

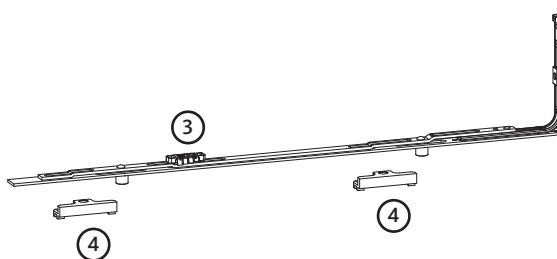
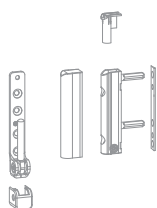


max.
100 kg



28

1



ZH lever-operated gear – ашчыў handle height

Item	SRH	G	Order number	PU
①	470- 720	230	G-22160-00-0-1	10
	721- 850	230	G-22161-00-0-1	10
	851-1100	230	G-22162-00-0-1	10
	1101-1350	230	G-22163-00-0-1	10
	1351-1600	230	G-22164-00-0-1	10
	1601-1850	230	G-22165-00-0-1	10
	1851-2100	516	G-22166-00-0-1	10
	2101-2350	516	G-22167-00-0-1	10

Top gear connector

Item	Order number	PU
②	6-32303-00-0-1	100

Top and bottom centre lock

Item	SRW	Length	LC	Order number	PU
③	-750	215	1	6-32010-00-0-1	10
	751-1350	530	2	6-35596-05-0-1	10
	1351-1600	740	2	6-35596-07-0-1	10

Rod guide

Item	Description	Order number	PU
⑳	Rod guide (number as required) [1]	8-00805-00-0-0	100

[1] When cropping the faceplate less than 150 mm or when the notches are still visible after cropping, the rod guide should be positioned at least 65 mm before the faceplate end

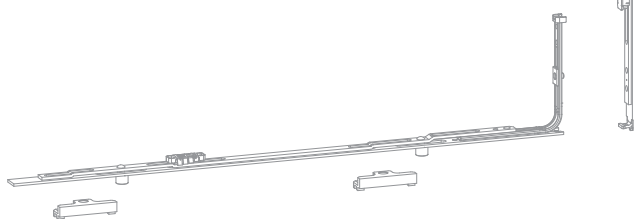
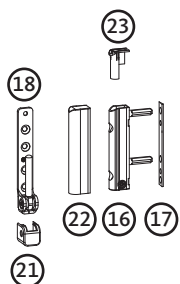
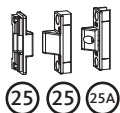
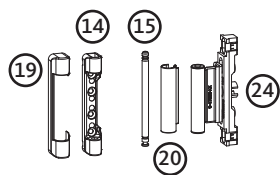
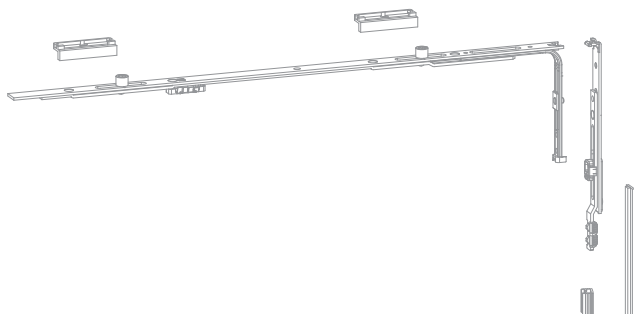
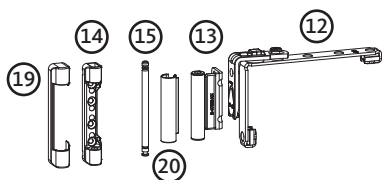
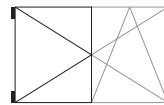
Frame components

Item	Description	Order number	PU
④	Strikers	profile-specific	100

[2] Number of strikers according to the total number of locking cams (LCs) of all components used

EURO-JET ZH passive-sash hardware

2-sashed, fixed handle height, axis 9 and 13 mm



***Ordering example**

9-47334-01-0-□ cover cap for stay-bearing

Colour white

Colour

9-47334-01-0-□ = order number 9-47334-01-0-7

Hinge side EURO-JET D passive-sash hardware

Item	Description	Order number	PU	Remarks
12	Turn-Only hinge	6-36848-00-0-1	10	non-handed
13	Stay-hinge	Axis 9		<input type="checkbox"/> Size according to sash overlap width 18, 20 or 22 mm The stay-hinges for Turn-Only sashes (6-36042/6-36044) have been designed with a lower axis than in the version for Tilt&Turn (6-36041/6-36043). This is to permit easier installation of the Turn-Only hinge in the hardware groove with the same tightness, as well as to allow the stay-bearing pin to be inserted more easily.
		6-36042- <input type="checkbox"/> <input type="checkbox"/> -0-1	100	
		Axis 13		
		6-36044- <input type="checkbox"/> <input type="checkbox"/> -0-1	100	
14	Stay-bearing, pin ø 3 mm, length = 2.5 mm	6-36026-03-0-1	100	
	Stay-bearing, pin ø 6 mm, length = 2.5 mm	6-36026-06-0-1	100	
15	Stay-bearing pin	9-48898-00-0-1	100	
16	Drill-in hinge, pin ø 6 mm, length = 23/23 mm	6-36180-01-0-1	100	
17	Packer for drill-in hinge	Pitch	Order number	PU
		6°	9-48684-06-0- <input type="checkbox"/>	100
18	Pivot-rest up to 100 kg, pin ø 3 mm, length = 2.5 mm	6-36881-03-0-1	100	
	Pivot-rest up to 100 kg, pin ø 6 mm, length = 22 mm	6-36882-22-0-1	100	
19	Cover cap for stay-bearing	included in covers set K-18675-00-0- <input type="checkbox"/>	9-47334-01-0- <input type="checkbox"/>	100
20	Cover cap for stay-hinge		9-47795-01-0- <input type="checkbox"/>	100
21	Cover cap for pivot-rest		9-42683-00-0- <input type="checkbox"/>	100
22	Cover cap for drill-in hinge		9-47783-01-0- <input type="checkbox"/>	100
23	Adjusting cap	9-47426-00-0-1	100	
24	Centre rebate-hinge	Axis 9		from SRH 751 <input type="checkbox"/> Size according to sash overlap width 18, 20 or 22 mm
		6-36841- <input type="checkbox"/> <input type="checkbox"/> -0-1	100	
		Axis 13		
		6-36842- <input type="checkbox"/> <input type="checkbox"/> -0-1	100	
25	Centre-closer, concealed, sash part	9-40564-00-0-1	100	
	Centre-closer, concealed, frame part	profile-specific	100	
25A	Centre-closer, concealed, adjustable, sash part	6-34229-00-0-1	100	

Order notes

- Load-bearing capacity of the hardware tested up to **100 kg** – see application diagram 0.45919
- Max. sash rebate width SRW 1600 mm
- Min. sash rebate height SRH 470 mm
- Max. sash rebate height SRH 2350 mm

Installation drawings

- Central locking system: 0.46572 + 0.44866
- Hinge side: 0.46740

Note

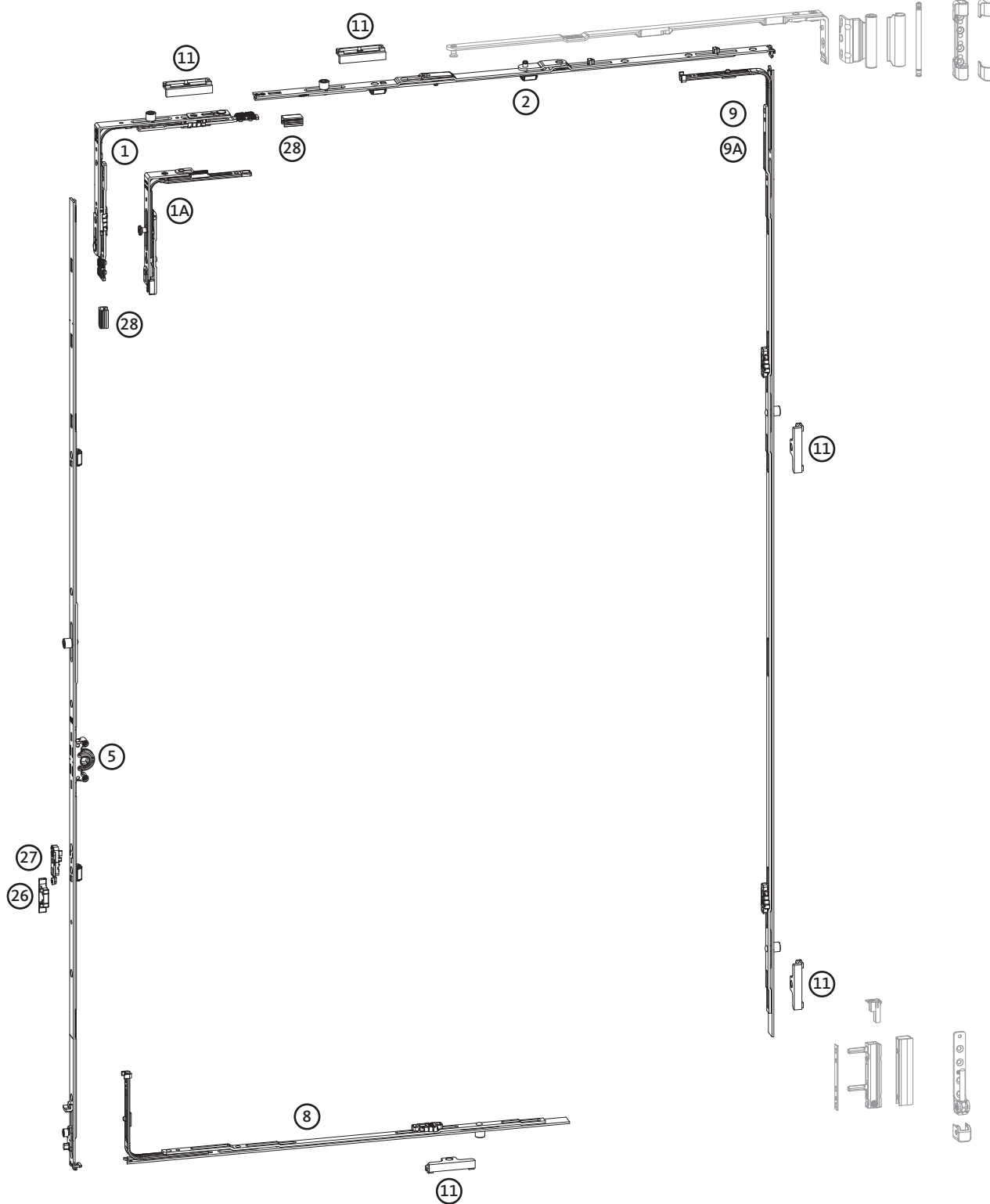
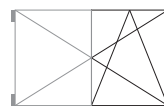
The product information of the system supplier, especially regarding design and fabrication, maximum sash dimensions and maximum sash weights as well as material qualities, e.g. linear expansions of profiles, must be observed.

EURO-JET Tilt&Turn hardware

2-sashed, fixed handle height, axis 9 and 13 mm



max.
100 kg



Central locking system

Corner-drive

Item	SRW	Length	LC	Order number	PU
①	401-1600	160/160	1 [1]	6-35217-00-0-1	10
①A	280- 400	45/125	1 [2]	6-32238-00-0-1	10

- [1] with Duplex locking cam
[2] with Cleverle locking cam

Stay-guide

Item	SRW	Length	LC	Order number	PU
②	280- 400 [1]	350	-	6-34995-03-0-1	10
	401- 500	350	-	6-34995-03-0-1	10
	501- 750	590	-	6-34995-06-0-1	10
	751-1000	840	1	6-34995-08-0-1	10
	951-1200	1040	1	6-34995-10-0-1	10
	1201-1450	1290	1	6-34995-12-0-1	10
	Additional stay				
	1301-1600 [2]			8-00734-00-0-1	10

- [1] SRW 280-400 only with corner-drive S 6-32238
[2] SRW 1301-1600 use additional stay. Installation according to drawing no. 0.43291
Attention: can only be used in conjunction with stay-guide 6-34995-10

T&T drive-gear BS 15 – fixed handle height

Item	SRH	Length	LC	G	Order number	PU
⑤	360- 490	363	-	155	G-22000-00-0-1	10
	450- 550	390	-	155	G-22001-00-0-1	10
	551- 720	560	-	200	G-22002-00-0-1	10
	721- 850	690	1	250	6-34219-03-0-1	10
	851-1100	940	1	400	6-34219-04-0-1	10
	1101-1350	1190	1	500	6-34219-05-0-1	10
	1351-1600	1440	2	600	6-34219-07-0-1	10
	1601-1850	1690	3	600	6-34219-08-0-1	10
	1851-2100	1940	3	980	6-34219-13-0-1	10
	2101-2350	2190	4	980	6-34219-14-0-1	10

- [1] SRH 360-450 only with anti-slam device with reduced tilt angle 9-38688-33

Rod guide

Item	Description	Order number	PU
②8	Rod guide (number as required) [1]	8-00805-00-0-0	100

- [1] When cropping the faceplate less than 150 mm or when the notches are still visible after cropping, the rod guide should be positioned at least 65 mm before the faceplate end

Centre lock - horizontal bottom

Item	SRW	Length	LC	Order number	PU
⑧	721-1100	530	1	6-34201-05-0-1	10
	1101-1350	740	1	6-34201-07-0-1	10
	1351-1600	1050	2	6-34201-10-0-1	10

Hinge-side centre lock – fixed handle height

Item	SRW	Length	LC	Order number	PU
⑨	721-1100	530	1	6-34201-05-0-1	10
	1101-1350	740	1	6-34201-07-0-1	10
	1351-1850	1190	2	6-34201-12-0-1	10
	1851-2100	1450	2	6-34201-15-0-1	10
	2101-2350	1890	3	6-34201-19-0-1	10

Can be ordered alternatively

⑨A	721-1100	530	2	6-35596-05-0-1	10
	1101-1350	740	2	6-35596-07-0-1	10
	1351-1850	1190	3	6-35596-12-0-1	10
	1851-2100	1450	3	6-35596-15-0-1	10
	2101-2350	1890	4	6-35596-19-0-1	10

Optional: sash lifter

Item	Description	Order number	PU
②7	Sash lifter with mishandling device [1]	6-29987-00-0-1	100

- [1] Run-up stop is required

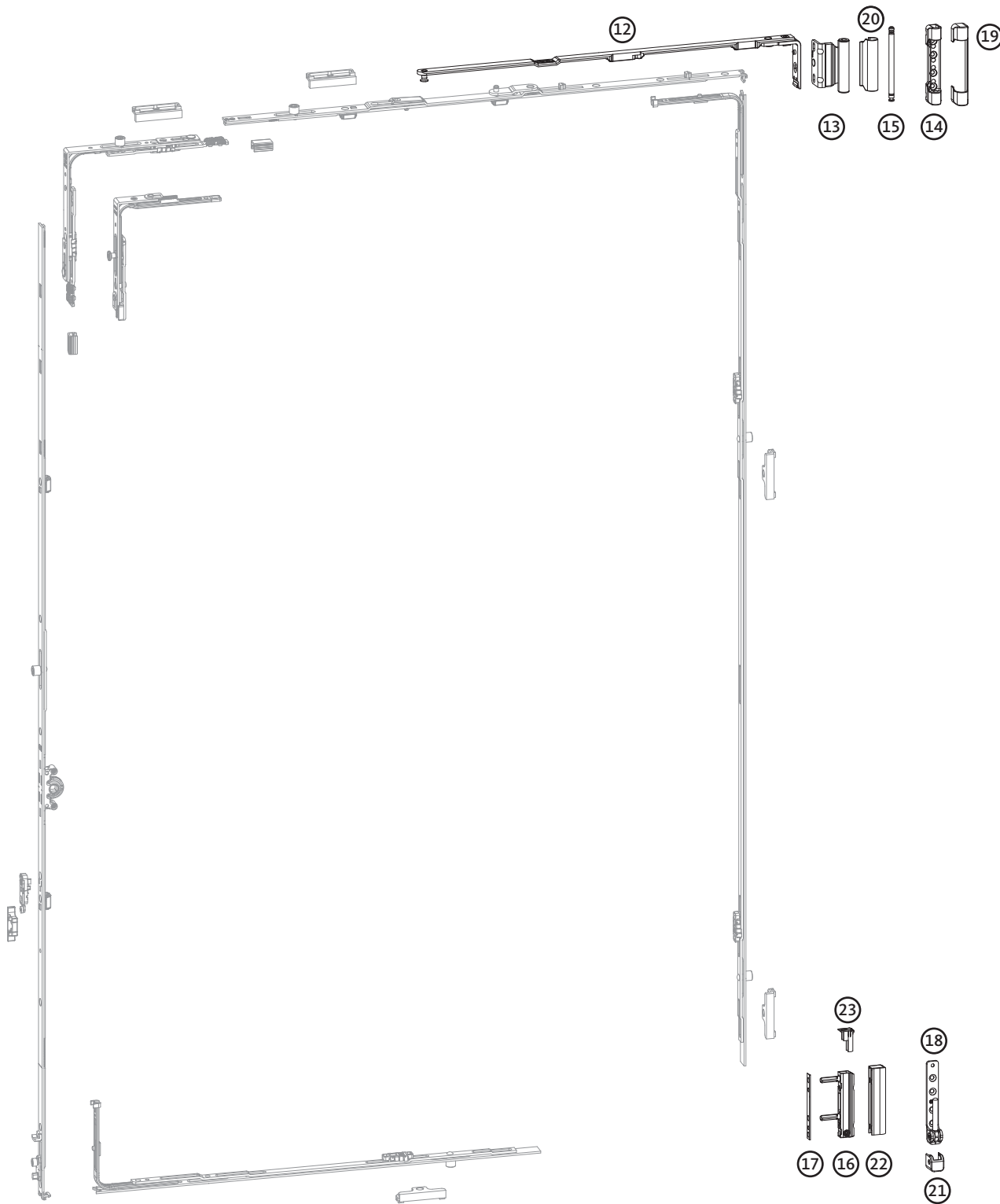
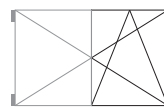
Frame components

Item	Description	Order number	PU
①1	Strikers [1]	profile-specific	100
②6	Run-up stop for sash lifter [2]	profile-specific	100

- [1] Number of strikers according to the total number of locking cams (LCs) of all components used
[2] In conjunction with sash lifter

EURO-JET Tilt&Turn hardware

2-sashed, fixed handle height, axis 9 and 13 mm



***Ordering example**

6-36041-□□-0-1 stay-hinge AX 9 mm

Size 20 mm overlap

Size

6-36041-□□-0-1 = order number 6-36041-20-0-1

EURO-JET D Tilt&Turn hardware hinge side					
Item	Description	SRW	Order number	PU	Remarks
12	Tilt&Turn stay-arm	280- 500	6-36880-24-0-1	10	non-handed
		501- 750	6-36880-33-0-1	10	
		751-1200	6-36880-47-0-1	10	
		1201-1600	6-36880-63-0-1	10	
13	Stay-hinge	Axis 9		100	□□ Size according to sash overlap width 18, 20 or 22 mm
		6-36041-□□-0-1			
		Axis 13			
			6-36043-□□-0-1	100	
14	Stay-bearing, pin ø 3 mm, length = 2.5 mm		6-36026-03-0-1	100	
	Stay-bearing, pin ø 6 mm, length = 2.5 mm		6-36026-06-0-1	100	
15	Stay-bearing pin		9-48898-00-0-1	100	
16	Drill-in hinge, pin ø 6 mm, length = 23/23 mm		6-36180-01-0-1	100	
17	Packer for drill-in hinge	Pitch	Order number	PU	Remarks
		6°	9-48684-06-0-□	100	Colours: □ 5 = dark brown UC 5 □ 7 = traffic white RAL 9016
18	Pivot-rest up to 100 kg, pin ø 3 mm, length = 2.5 mm		6-36881-03-0-1	100	
	Pivot-rest up to 100 kg, pin ø 6 mm, length = 22 mm		6-36882-22-0-1	100	
19	Cover cap for stay-bearing	included in covers set K-18675-00-0-□	9-47334-01-0-□	100	Colours: □ 1 = silver EV1 (1N paint) □ 3N = brass colour (3N paint) □ 4 = medium bronze (4N paint) □ 5 = dark brown UC 5 □ 7 = traffic white RAL 9016
20	Cover cap for stay-hinge		9-47795-01-0-□	100	
21	Cover cap for pivot-rest		9-42683-00-0-□	100	
22	Cover cap for drill-in hinge		9-47783-01-0-□	100	
23	Adjusting cap		9-47426-00-0-1	100	

Order notes

- Load-bearing capacity of the hardware tested up to **100 kg** – see application diagram 0.45919
- Max. sash rebate width SRW 1600 mm
- Max. sash rebate height SRH 2350 mm

Installation drawings

- Central locking system: 0.46572 + 0.44866
- Hinge side: 0.46740

Note

The product information of the system supplier, especially regarding design and fabrication, maximum sash dimensions and maximum sash weights as well as material qualities, e.g. linear expansions of profiles, must be observed.

Frame components

for 1-sashed windows and balcony-doors



Profile system PVC windows	Sash profile	Frame profile	Dummy mullion profile	Axis mm	Overlap mm/pitch	T&T striker (side-tilter) PU = 100	Standard striker PU = 100	Bullet-catch* PU = 100	Packer PU = 100	Run-up stop for sash lifter PU = 100	Centre-closer (frame part) PU = 100	
Accord												
Accord Contour 7.0 MD	A.FL 02	A.RA 01	A.ST 01	13.0	20/0°		9-38620-00-0-1	K-17118-00-0-1		9-40472-00-0-1	9-40866-00-0-1	
Acome												
Acome Crescendo				13.0	-/-							
Actual												
Actual A 600				13.0	-/0°	9-39728-00-L/R-1	9-39614-00-0-1					
Alphacan												
Alphacan Alpha 70-80	63 720	62 700		13.0	20/0°		9-42972-00-0-1	K-17118-00-0-1		9-40465-00-0-1	9-40866-00-0-1	
Alphacan Class	MB 00 G	MT 00 B	MS 75 B	13.0	20/0°	9-41978-00-L/R-1	9-41977-00-0-1				9-40565-12-0-1	
Alphacan Esthea	53-05	53-45		12.9	20/0°	E-18111-00-0-1	E-18104-00-0-1					
Alphacan Fersina Diplomat	ZOMI	ELMI	DUEB	9.1	21/0°	8-00940-00-0-0	9-36886-00-0-1			9-40460-00-0-1	9-40871-01-0-1	
Alphacan Fersina Master	ZOM	ELA	TAO 00	9.4	21.7/0°							
Alphacan Profilia 600	PF 096	PF 090		9.0	20/0°	8-00946-00-0-0	9-30146-06-0-1					
Alphacan Profilia MD 600	PE 611	PE 602		13.0	20/0°	9-38231-00-0-0	9-38115-00-0-1			9-40461-00-0-1	9-40565-05-0-1	
Aluplast												
Aluplast energeto 4000	140086	40007			19/0°	E-19223-00-L/R-1	9-38218-00-0-1	K-17139-00-0-1		9-40065-00-0-1		
Aluplast energeto 5000	50083	50003			24/0°		9-38218-00-0-1					
Aluplast energeto 8000	80086	80005			20/5°	9-36531-00-L/R-1	9-34907-00-0-1	K-17118-00-0-1 K-17747-00-0-1		9-40066-00-0-1	9-40866-00-0-1	
Aluplast Ideal 1000	100x22	100x01	120205	13.0	20/5°	E-19223-00-L/R-1	9-38218-00-0-1	K-17139-00-0-1		9-40066-00-0-1	9-40866-00-0-1	
Aluplast Ideal 2000	120022	120002	120204									
Aluplast Ideal 4000	140025	140002	140066									
Aluplast Ideal 5000	150025	150002	140250									
Aluplast Ideal 6000		160003			20/0°	E-19223-00-L/R-1	9-38218-00-0-1	K-17139-00-0-1		9-40066-00-0-1	9-40866-00-0-1	
Aluplast Ideal 7000	170007	140020										
Aluplast Ideal 8000	180x83	180x03										
Aluplast Signum 21	70	71	4143	9.0		8-00950-00-0-1	9-30146-04-0-1					
Aluplast Signum 25	2539	2534	2550	13.0		9-35772-00-0-1	9-35770-00-0-1	K-17747-00-0-1		9-40463-00-0-1	9-40565-07-0-1	
Aluplast Signum 26	2610	2601	2630				9-37325-00-L/R-1	9-34907-00-0-1			9-40565-10-0-1	
Asaspen												
Asaspen 70 mm	7053	7052	7059	13.0	20/0°	9-36531-00-L/R-1	9-42972-00-0-1	K-17118-00-0-1		9-40465-00-0-1	9-40866-00-0-1	
Atrya												
Atrya (Tryba) E 58	Z 74	L 65	T 32	9.0	20/5°	E-16073-00-0-1	E-16069-00-0-1					
Atrya (Tryba) T 58	Z 76 J	L 66/3J		13.0		E-18951-00-0-1	E-18949-00-0-1	K-17747-00-0-1		9-40465-00-0-1		
Atrya (Tryba) T 58/3	Z 76/3J	L 66/3J		13.1								
Brügmann												
Brügmann AD	HP 152	HP 102	HP 350	13.0	20/0°	9-36531-00-L/R-1	9-34907-00-0-1	K-17747-00-0-1		9-40465-00-0-1	9-40565-02-0-1	
Brügmann MD	HP 252	HP 202	HP 451									
Deceuninck												
Deceuninck 1800	P 1807	P 1801	P 400	13.0	21/0°	9-35469-00-L/R-1	9-36544-00-0-1	K-17044-00-0-1	9-30084-00-0-1 E-18310-00-0-1			
Deceuninck Mondial	P 2021	P 2000	P 2040		21/0°	9-35756-00-0-1	9-35737-00-0-1			9-40475-00-0-1	9-40565-03-0-1	
Deceuninck Mondial	P 2105	P 2100	P 2040		21/0°							
Deceuninck Zendow	3052	3001	3077		20/5°	E-21394-00-0-1			K-17118-00-0-1	E-21902-35-0-1	9-40565-06-0-1	
Deceuninck Zendow Upgrade	4040	4000	4031		20/5°		9-35508-00-0-1					
Dimex												
Dimex Komfort				13.0	20/0°	E-19223-00-L/R-1	9-34907-00-0-1	K-17139-00-0-1		9-40473-00-0-1		
Egeplast												
Egeplast				9.0	20/5°	9-34496-01-0-1	E-13534-15-0-1					
Fapes												
Fapes	82	81	85	9.0	22/0°	9-39513-00-L/R-1	9-39511-00-0-1	6-29892-10-0-1		9-40459-00-0-1	9-40871-02-0-1	
Funke												
Funke KS Helios				13.0	20/3°	E-19223-00-L/R-1	9-42972-00-0-1	K-17118-00-0-1		9-40465-00-0-1	9-40866-00-0-1	
Funke KS Phoenix												
Gealan												
Gealan S 3000	3090	3008	3080	13.0	20/0°	9-36089-00-0-1	9-35858-00-0-1	K-17890-00-0-1		9-40468-00-0-1	9-40565-04-0-1	
Gealan S 6000	6093	6008	6051			9-37866-00-L/R-1	9-37885-00-0-1					
Gealan S 7000 IQ	7093	7008	7302			9-36089-00-0-1	9-35858-00-0-1	K-17890-00-0-1			9-40468-00-0-1	9-40565-04-0-1
Gealan S 8000 IQ	8066	8008	8080									
Gromathic												
Gromathic System AD 3100	GM 3101	GM 3108	GM 3114	9.0	20/0°	9-35923-00-L/R-1	9-34202-00-0-1					
Gromathic System MD 3000	GM 3001	GM 3008	GM 3004	9.0	20/0°							
Hocoplast												
Hocoplast H 120	120-86	100-68	100-42	9.0	20/5°	E-11967-00-0-1	E-11968-00-0-1					
Home												
Home	F 84	B 80		9.0	20/6°	8-00936-00-0-1	9-30146-02-0-1	K-17044-00-0-1	9-30082-00-0-1			
Inoutic												
Inoutic AD	Z 10	L 10		13.0	21/0°		9-34492-00-0-1		9-30081-00-0-1	9-40467-00-0-1	9-40565-09-0-1	
Inoutic Deluxe	Z 710			13.0	-/-	9-35466-00-0-1		K-17044-00-0-1				
Inoutic Elite	Z 710	L 710		13.0	20/0°		9-34492-00-0-1		9-30081-00-0-1		9-40565-09-0-1	
Inoutic MD	ZM 1-4	LM 10		9.0		9-29653-00-0-1	9-31755-00-0-1			9-40467-00-0-1		
Inoutic MD 100	ZM 200	LM 200		13.0	21/0°		9-34492-00-0-1	K-17044-00-0-1	9-30081-00-0-1		9-40565-09-0-1	
Inoutic MD 100	ZM 100	LM 100		13.0	21/0°	9-35466-00-0-1	9-34492-00-0-1	K-17044-00-0-1	9-30081-00-0-1	9-40467-00-0-1	9-40565-09-0-1	
Inoutic Prestige	Z 184	L 176										

* The K-number includes a bullet-catch roller (sash part) with order number 9-45011-00-0-1

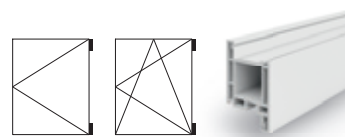


Profile system PVC windows	Sash profile	Frame profile	Dummy mullion profile	Axis mm	Overlap mm/° pitch	T&T striker (side-titrer) PU = 100	Standard striker PU = 100	Bullet-catch* PU = 100	Packer PU = 100	Run-up stop for sash lifter PU = 100	Centre-closer (frame part) PU = 100
Internova											
Internova 4KS	GF 4022	GR 4000	GS 4050	13.0	20/0°		9-43616-00-0-1	K-17118-00-0-1		9-40465-00-0-1	9-40866-00-0-1
Internova 6000	GF 6020	GR 6001	GS 6001								
Kompen											
Kompen KOM 900				13.0	-/-	9-36089-00-0-1	9-42972-00-0-1	K-17747-00-0-1		9-40465-00-0-1	9-40866-00-0-1
Kompen Thermoline KOM 600	KOM 602	KOM 605			20/0°						
LB-Profile											
LB-Profile PCD	CZ2-5	CL2-5		13.0	20/0°	9-36531-00-L/R-1	9-34907-00-0-1				
LB-Profile PCD	CZ2-5	CLM2-5-C									
Oxxo											
Oxxo Evolution				13.0	-/-						
Oxxo Sym					-/-						
Pakpen											
Pakpen				9.0	-/-	9-35923-00-L/R-1					
Pakpen Global Seri				13.0	-/-	9-40329-00-0-1	9-40328-00-0-1				
Pakpen Optimal				13.0	20/0°						
Panorama											
Panorama 3000	3015	3001		13.0	20/0°		9-41591-00-0-1	K-17118-00-0-1		9-40488-00-0-1	
Pimapen											
Pimapen S7500 Fantasia				13.0	20/0°	9-36089-00-0-1	9-42972-00-0-1				
Pimapen S6000				9.0		9-35923-00-L/R-1	9-34202-00-0-1				
Pimapen S6000				13.0		-/-	9-36089-00-0-1				
Plafen											
Plafen E-Line	EZ 60/77	EL 60/66		13.0	20/0°		9-42972-00-0-1				
Plastil											
Plastil Elodie				13.0	-/-	E-21035-03-L/R-1					
Plastival											
Plastival PF 5900	F 001	F 010	F 022	13.0	20/7°	E-18759-00-0-1	E-18736-00-0-1	K-17044-00-0-1	E-18773-00-0-1	E-21902-20-0-1	
Plustec											
Plustec Softline	FR 60 V	BR 66	ST 61	13.0	20/5°	9-38317-00-L/R-1	9-37135-00-0-1	K-17118-00-0-1			
Primo											
Primo 4000	3283	3282		13.0	20/-	E-19223-00-L/R-1	9-34907-00-0-1				
Profel											
Profel	P 602	P 601		9.0	20/0°	8-00961-00-0-1	9-30146-16-0-1				
Profex											
Profex 2000				13.0	-/-	9-35756-00-0-1					
Profine											
Profine Eurodur 3S	1411	1401	1440	13.0	20/4°	9-33682-00-L/R-1	9-33802-00-0-1	K-17118-00-0-1		9-40457-00-0-1	9-40565-00-0-1
Profine EuroFutur Classic	2411	2401	2441								
Profine EuroFutur Elegance	111	101	141								
Profine Gold	1463	1461	1440	12.9	20/2.5°	9-35832-00-L/R-1	9-35508-00-0-1	K-17044-00-0-1	9-30084-00-0-1	9-40469-00-0-1	9-40871-04-0-1
Profine KBE 58	318	306	134								
Profine KBE 70	375	370	385	13.0	20/0°	9-35832-00-L/R-1	9-35508-00-0-1	K-17118-00-0-1		9-40488-00-0-1	9-40565-06-0-1
Profine KBE 70	9375	9370									
Profine Kömmerling 88+	6211	6201	6306	13.0	20/4°	9-33682-00-L/R-1	9-33802-00-0-1	K-17895-00-0-1		9-40457-00-0-1	9-40565-00-0-1
Profine Trocal 88+	8221	8102	532100								
Profine Trocal 900	920100	910100	935100	9.0	20/0°	9-36102-00-0-1	9-41716-00-0-1	K-17044-00-0-1	9-30084-00-0-1	9-40476-00-0-1	9-40871-03-0-1
Profine Trocal Confort	120400	111000	130900			9-30806-03-0-1					
Profine Trocal Innovova 2000	520100	510100	532100	13.0	20/0°	9-37054-00-L/R-1	9-37137-00-0-1	K-17140-00-0-1		9-40785-00-0-1	9-40565-11-0-1
Profine Trocal Innovova 70 AD	620600	610100				9-36102-00-0-1	9-41716-00-0-1				
Profine Trocal Innovova 70 MD	520600	510300				9-37054-00-L/R-1	9-37137-00-0-1				
Profine Trocal Innovova 70 MD	520600	510300				9-36102-00-0-1	9-41716-00-0-1				
Pural											
Pural AD	P 009	P 002	SA/SI	9.0	18/0°	8-00932-00-0-1	9-41261-00-0-1	K-17044-00-0-1	9-41276-00-0-1	9-41277-00-0-1	
Pural MD	P 005	P 010	Z100Z110								
Rehau											
Rehau Brilliant-Design	550 060	550 000		13.0	20/0°	9-35772-00-L/R-1	9-35770-00-0-1	K-17139-00-0-1		9-40463-00-0-1	9-40565-07-0-1
Rehau Klima-Design	555 510	555 500									
Rehau Geneo	Z 57	72 AD	60								
Rehau Optimum/Platinum											
Rehau S 730	541 010	541 060	541 100	9.0	18/0°	9-35772-00-L/R-1	9-35770-00-0-1	K-17139-00-0-1		9-40463-00-0-1	9-40565-07-0-1
Rehau S 780	634 153	634 133	632 913								
Roloplast											
Roloplast 3-K	310	301	321	13.0	20/-		9-42972-00-0-1				
Roloplast 4-K	410	401	421	9.4			9-31115-00-0-1				
Roloplast 6-K	610	601	621	13.0			9-42972-00-0-1				

* The K-number includes a bullet-catch roller (sash part) with order number 9-45011-00-0-1

Frame components

for 1-sashed windows and balcony-doors

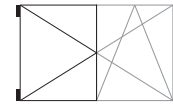


Profile system PVC windows	Sash profile	Frame profile	Dummy mullion profile	Axis mm	Overlap mm/° pitch	T&T striker (side-tilter) PU = 100	Standard striker PU = 100	Bullet-catch* PU = 100	Packer PU = 100	Run-up stop for sash lifter PU = 100	Centre-closer (frame part) PU = 100	
Roplasto												
Roplasto 6001 Plus S-AD	641300	619003		9.0	20/0°	8-00940-00-0-1	E-15061-00-0-1	K-17044-00-0-1	9-30082-00-0-1	9-40489-00-0-1		
Roplasto 6001 Plus S-AD	640200	619003										
Roplasto 6001 Plus S-MD	641300	610102	610700									
Roplasto 6001 Plus S-MD	640200	610172										
Roplasto 6002	671000	670100	673500	13.0	22/0°	9-35832-00-L/R-1	9-35508-00-0-1	K-17139-00-0-1		9-40488-00-0-1	9-40565-04-0-1	
Roplasto 7001	220204	210804										
Salamander												
Salamander bluEvolution 82 AD / MD				13.0	20/0°	9-36531-00-L/R-1	9-45847-00/01-0-1	K-17747-00-0-1		9-40465-00-0-1	9-40866-00-0-1	
Salamander bluEvolution	171 020	170 420	176 020	13.0	20/0°	9-37325-00-L/R-1	9-38218-00-0-1	K-17139-00-0-1		9-40466-00-0-1	9-40565-10-0-1	
Salamander Design 2D	211 025	210 020	216 020		20/R14							
Salamander Design 3D	211 220	110 220	*									
Salamander Design MD	111 026	110 036	116 025									
Salamander Streamline	251 020	250 220			20/0°		9-31750-00-0-1	K-17044-00-0-1	9-34861-00-0-1	9-40471-00-0-1		
Salamander Universal	201 020		206 030	9.0								
Salamander Universal	201 030											
Schüco												
Schüco Corona AS 60	8105	8101	8131	13.0	20/0°	E-19223-00-L/R-1	9-38218-00-0-1	K-17139-00-0-1		9-40065-00-0-1	9-40866-00-0-1	
Schüco Corona CT 60					-/-							
Schüco Corona CT 70	8586	8597	8574		20/0°	E-19223-01-L/R-1	9-38218-00-0-1	K-17747-00-0-1		9-40066-00-0-1	9-40866-00-0-1	
Schüco Corona MD 60	8121	8116	8137			E-19223-00-L/R-1		K-17139-00-0-1				
Sim												
Sim Heliance				13.0	-/-							
Socredis												
Socredis S33				13.0	-/-	E-20597-01-L/R-1						
Socredis Symbioline					-/-							
Stöckel												
Stöckel Ecostep	2260	2111		13.0	20/-	9-38677-00-0-1	9-37730-00-0-1					
Technal												
Technal Focus				9.0	-/-							
Thermoplast												
Thermoplast	AP024	AP021		9.0	20/0°		9-37790-00-0-1					
Thermoplast	AP302	AP301		13.0			9-34907-00-0-1					
Toundra												
Toundra				9.0	-/-							
Veka												
Veka 70				13.0	-/-	9-36531-00-L/R-1	9-45847-00-0-1	K-17747-00-0-1		9-40465-00-0-1	9-40866-00-0-1	
Veka Alphasline 90 MD	103,312	101,236	102,244		20/0°							
Veka Kietis					-/-							
Veka Softline 70 AD	103,197	101,086	102,196	13.0	20/0°	9-35923-00-L/R-1	9-34202-00-0-1	K-17044-00-0-1	E-20048-09-0-1	9-40464-00-0-1	9-40871-04-0-1	
Veka Softline AD	103,105	101,085										
Veka Softline AD	103,100	101,086										
Veka Softline MD	103,117	101,098										
Veka Topline AD	103,200	101,200	102,206	13.0		9-36531-00-L/R-1	9-45847-00-0-1	K-17747-00-0-1		9-40465-00-0-1	9-40866-00-0-1	
Veka Topline MD	103,220	101,220	102,226				9-42972-00-0-1					
VIVA												
VIVA-Plast				13.0	20/0°		9-42972-00-0-1	K-17118-00-0-1		9-40465-00-0-1	9-40866-00-0-1	
Weltplast												
Weltplast	552000	550000	562000	9.0	-/0°	9-29770-00-L/R-1	9-41364-00-0-1	K-17044-00-0-1	9-41595-00-0-1	9-41457-00-0-1		
Winsa												
Winsa	1102	1101	1161	13.0	20/0°		9-38115-00-0-1					
Wymar												
Wymar 2000	P 2204	P 2008		13.0	20/0°	9-35756-00-0-1	9-35737-00-0-1	K-17044-00-0-1	E-18310-00-0-1	9-40475-00-0-1		
Wymar 2500						9-42686-00-L/R-1	E-19550-32-0-1				9-42662-00-0-1	9-40565-04-0-1
Wymar 3000	3200	3000	3300			20/10°	9-41840-00-0-1	E-19550-62-0-1	K-17118-00-0-1		9-41864-00-0-1	9-41866-00-0-1

* The K-number includes a bullet-catch roller (sash part) with order number 9-45011-00-0-1

Frame components

for 2-sashed windows and balcony-doors without mullion



Profile system PVC windows	Sash profile	Frame profile	Dummy mullion profile	Axis mm	Overlap mm/°	Standard striker PU = 100	Dummy-mullion striker (vertical) PU = 100	Rebate lever	Packer lever-operated gear PU = 100	Shoot-bolt top PU = 100	Shoot-bolt bottom PU = 100	Striker 2-sashed PU = 100				
Accord																
Accord	503002	503001	503228	9.0	19/0°	9-34325-00-0-1	9-30146-01-0-1	ZK								
Accord Contour 7.0 MD	A.FL 02	A.RA 03	A.ST 01	13.0	20/0°	9-38620-00-0-1	E-13534-12-0-1									
Actual																
Actual A 600				13.0	-/0°	9-39614-00-0-1						9-36227-00-0-1				
Alphacan																
Alphacan Class	MB 00 G	MT 00 B	MS 75 B	13.0	20/0°	9-41977-00-0-1	E-13534-12-0-1			6-22917-00-0-1	6-22916-00-0-1	6-32346-00-0-1				
Alphacan Fersina Diplomat	ZOMI	ELMI	DUEB	9.1	21/0°	9-36886-00-0-1	9-30146-05-0-1			6-25170-00-0-1	6-25169-00-0-1	6-27837-00-0-1				
Alphacan Fersina Master	ZOM 01	ELA 02	TAO 00	9.4	21.7/0°	9-30146-07-0-1	9-30146-05-0-1	ZK	9-32035-05-0-1	6-25416-00-0-1	6-25415-00-0-1	6-27837-00-0-1				
Aluplast																
Aluplast Ideal 2000	120022	120002	120204	13.0	20/5°	9-34907-00-0-1	E-13534-12-0-1	ZH		6-22917-00-0-1	6-22916-00-0-1	9-36227-00-0-1				
Aluplast Ideal 4000	140025	140002	140066							6-22917-00-0-1	6-22916-00-0-1	9-36227-00-0-1				
Aluplast Ideal 5000	140020	140001	140250			9-38634-00-0-1			6-22917-00-0-1	6-22916-00-0-1	9-36227-00-0-1					
Aluplast Signum 21	70	71	4143	9.0	20/0°	9-30146-04-0-1	9-43809-00-0-1			6-22917-00-0-1	6-22916-00-0-1	8-00668-26-0-1				
Aluplast Signum 25	2539	2534	2550	13.0		9-35770-00-0-1	E-13534-12-0-1			6-22917-00-0-1	6-22916-00-0-1	9-35774-00-0-1				
Aluplast Signum 26	2610	2601	2630			9-34907-00-0-1				6-22917-00-0-1	6-22916-00-0-1	9-37907-00-0-1				
Atrya																
Atrya (Tryba) E 58	Z 74	L 65	T 32	9.0	20/5°	E-16069-00-0-1	9-43809-00-0-1	ZH								
Atrya (Tryba) T 58	AZ 76	L 65		13.0		E-18949-00-0-1				6-22917-00-0-1	6-22916-00-0-1	E-18950-00-0-1				
Atrya (Tryba) T 62	BS 100	NS 100	MC 100	9.0		E-16237-00-0-1	E-16237-00-0-1			6-25170-00-0-1	6-25169-00-0-1	E-14591-00-0-1				
Brüggmann																
Brüggmann 81	HF 410	HF 431	HF 438	9.0	20/0°	9-32616-00-0-1	9-30735-00-0-1	ZH								
Brüggmann AD	HP 152	HP 102	HP 350	13.0		9-34907-00-0-1	E-13534-12-0-1							6-22917-00-0-1	6-22916-00-0-1	9-36227-00-0-1
Brüggmann Euro 92	HF 952	HF 941	ZF 983	9.0		9-35745-00-0-1	9-35745-00-0-1	ZK								
Brüggmann MD	HP 252	HP 202	HP 451	13.0		9-34907-00-0-1	E-13534-12-0-1	ZH		6-22917-00-0-1	6-22916-00-0-1	9-36227-00-0-1				
Deceuninck																
Deceuninck 1800	P 1806	P 1801	P 400	8.7	21/0°	9-36544-00-0-1	E-13534-12-0-1	ZH								
Deceuninck Mondial	P 2020	P 2000	P 2040	13.0		9-35737-00-0-1							6-22917-00-0-1	6-22916-00-0-1	9-35741-00-0-1	
Deceuninck Mondial	P 2105	P 2100	P 2045										6-22917-00-0-1	6-22916-00-0-1	9-35741-00-0-1	
Dimex																
Dimex Komfort				13.0	20/0°	9-34907-00-0-1	E-13534-12-0-1			6-22917-00-0-1	6-22916-00-0-1	E-19222-00-0-1				
Dimex Super	7750		8510	9.0		9-34202-00-0-1	9-30627-00-0-1	ZK		9-35847-00-9-1	9-35848-00-9-1	8-00668-20-0-1				
Dongsan																
Dongsan (Korea)	1616	1604	1640	13.0	20/-	9-33802-00-0-1	E-13534-12-0-1	ZH		6-22917-00-0-1	6-22916-00-0-1	9-35251-10-0-1				
Edil																
Edil Oslo	P 1579	P 1590	P 1584	13.0	20/0°	9-38307-00-0-1	E-13534-12-0-1	ZH								
Edil Plastix	P 1472	P 1470	P 1180			9-30146-03-0-1	9-30146-03-0-1									
Edil Plastix	P 1576	P 1580	P 1684													
Egeprofil																
Edge profile Turkey				9.0	21/5°	9-33271-00-0-1	E-13534-12-0-1	ZH		6-22917-00-0-1	6-22916-00-0-1	8-00668-11-0-1				
Europlast																
Europlast 7000	R 7011	R 7001		9.0	21.2/5°	9-30146-09-0-1	9-30146-09-0-1	ZK								
Fapes																
Fapes	82	81	85	9.0	22/0°	9-39511-00-0-1	E-13534-12-0-1	ZH		6-22917-00-0-1	6-22916-00-0-1	6-30053-00-0-1				
Gealan																
Gealan S 3000	3090	3008	3080	13.0	20/0°	9-35858-00-0-1	E-13534-12-0-1	ZH		6-22917-00-0-1	6-22916-00-0-1	8-00668-19-0-1				
Gealan S 3000	3090		3301				9-35858-00-0-1	ZK								
Gealan S 6000	6093	6008	6051				9-37885-00-0-1	E-13534-12-0-1					ZH			
Gealan S 7000 IQ	7093	7008	7302				9-35858-00-0-1	9-35858-00-0-1					ZK	6-22917-00-0-1	6-22916-00-0-1	8-00668-19-0-1
Gealan S 7000 IQ	7093		7303													
Gealan S 8000	8066	8008	8080												E-13534-12-0-1	ZH
Gromathic																
Gromathic System AD 3100	GM 3101	GM 3108	GM 3114	9.0	20/0°	9-34202-00-0-1	9-34202-00-0-1	ZK	9-32035-03-0-1	6-24682-00-0-1	6-24681-00-0-1	8-00668-10-0-1				
Gromathic System MD 3000	GM 3001	GM 3008	GM 3004										6-24387-00-0-1	6-24387-00-0-1	8-00668-20-0-1	
Helmitin																
Helmitin KS	4-60115	4-60111	4-60124	12.3	20/0°	9-35714-00-0-1	9-35714-00-0-1	ZK	9-32035-05-0-1							
Helmitin KSL	4-60185	4-60180	4-60201				E-13534-12-0-1	ZH								
Hocoplast																
Hocoplast H 120	120-86	100-68	100-42	9.0	20/5°	E-11968-00-0-1	E-13534-12-0-1	ZH		6-22917-00-0-1	6-22916-00-0-1	8-00668-22-0-1				
Inoutic																
Inoutic AD	Z 10	L 10	SFZ 10	13.0	21/0°	9-34492-00-0-1	E-13534-12-0-1	ZH		6-22917-00-0-1	6-22916-00-0-1	9-38052-00-0-1				
Inoutic MD	ZM 1	LM 10	SFM 1	9.0		9-31755-00-0-1				6-22917-00-0-1	6-22916-00-0-1	8-00668-17-0-1				
Internorm																
Internorm	IF	LS		9.0	20/0°	9-30146-01-0-1	E-13534-12-0-1			6-22917-00-0-1	6-22916-00-0-1					
Intertec																
Intertec (Greiner)	GF 1020	GR 1001	GS 1050	9.0	20/0°	E-14339-00-0-1	E-14339-00-0-1	ZK				8-00668-22-0-1				
Intertec WD 70 (Greiner)	140001	140020	140050	13.0	20/0°	9-38634-00-0-1	E-13534-12-0-1	ZH		6-22917-00-0-1	6-22916-00-0-1	9-38635-00-0-1				
Ital																
Ital Plastick	07073ZE	07073EL	07073TC	10.0	20/0°	9-30146-04-0-1	9-30146-04-0-1	ZK		6-25416-00-0-1	6-25415-00-0-1	8-00668-04-0-1				
LB-Profile																
LB-Profile PAD	AZ 2-3	AL 1-3	MSZ-10	13.0	20/0°	9-34907-00-0-1	E-13534-12-0-1	ZH		6-22917-00-0-1	6-22916-00-0-1	9-36227-00-0-1				

Frame components

for 2-sashed windows and balcony-doors without mullion



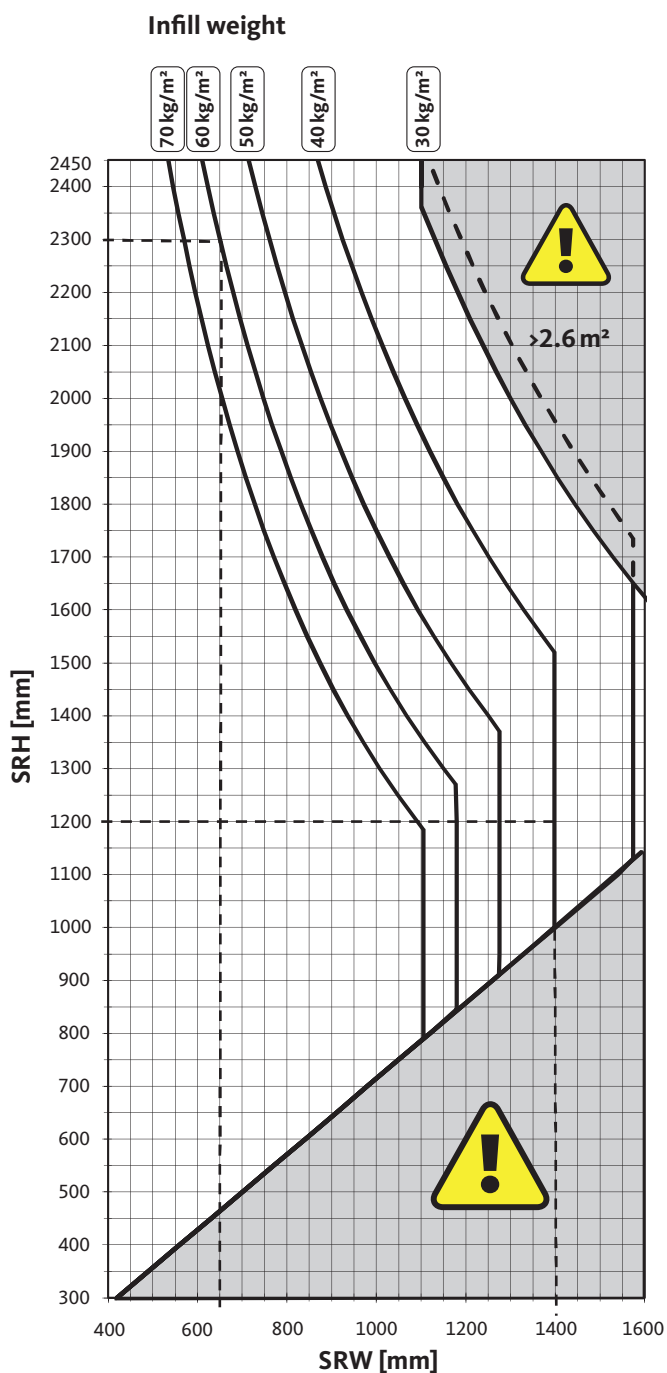
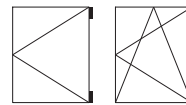
Profile system PVC windows	Sash profile	Frame profile	Dummy mullion profile	Axis mm	Overlap mm/°	Standard striker PU = 100	Dummy-mullion striker (vertical) PU = 100	Rebate lever	Packer lever-operated gear PU = 100	Shoot-bolt top PU = 100	Shoot-bolt bottom PU = 100	Striker 2-sashed PU = 100			
Milani															
Milani Resine-Plastalum 100	SER 125	SER 126	SER 149	13.0	20/0°	9-30146-03-0-1	9-30146-03-0-1	ZK							
Plastival															
Plastival PF 5900	F 001	F 010	F 022	13.0	20/7°	E-18736-00-0-1	E-18108-00-0-1	ZH		6-22917-00-0-1	6-22916-00-0-1	E-18737-00-0-1			
Plastmo															
Plastmo (DK)	6035040	6035025	6035085	9.0	20/0°	9-34202-00-0-1	9-34202-00-0-1	ZK	9-32035-03-0-1						
Plustec															
Plustec	FLR 70	BLR 80C	ST 61	13.0	20/5°	9-30146-01-0-1	9-30146-01-0-1	ZK							
Plustec 3K-System AD	FR 60 V	BR 66	ST 61			9-37135-00-0-1	9-38319-00-0-1								
Plustec 3K-System AD	FR 60 V	BR 66	ST 44				E-13534-12-0-1	ZH							
Primo															
Primo Serie 400	P 2379	P 2297	P 1899	9.0	20/12°	9-36878-00-0-1	9-36878-00-0-1			6-25416-00-0-1	6-25415-00-0-1	8-00668-17-0-1			
Profine															
Profine Dina (Spanien)	1753	1750	1755	12.9	20/4°	9-33802-00-0-1				6-26071-01-0-1	6-24387-01-0-1	9-35251-10-0-1			
Profine Eurodur 3S	1411	1401	1440	13.0						8-00975-00-0-1	Euro	6-26071-01-0-1	6-24387-01-0-1	9-35251-10-0-1	
Profine Eurodur 3S			1441	12.9						9-32275-00-0-1	Euro	6-26071-01-0-1	6-24387-01-0-1	9-35251-10-0-1	
Profine Eurodur 3S			SP 1108	13.0						9-32275-00-0-1					
Profine Eurodur 3S			1565	12.9						9-34451-00-0-1					
Profine Eurodur 3S			2411	2401						2441	13.0	E-13534-12-0-1			
Profine EuroFutur Classic			111	101						141	13.0	9-30748-05-0-1	ZH	6-22917-00-0-1	6-22916-00-0-1
Profine EuroFutur Elegance	1463	1461	1440	12.9						9-35508-00-0-1		6-22917-00-0-1	6-22916-00-0-1	9-35251-10-0-1	
Profine Gold auswärts	1482		1441	12.9						9-30146-11-0-1		6-26071-01-0-1	6-24387-01-0-1	9-35251-10-0-1	
Profine Innovina 2000	520100	510100	532100	13.0						20/0°	9-41716-00-0-1	E-13534-12-0-1	ZH		
Profine KBE 58	318	306	134	20/2.5°	9-31115-00-0-1	9-31115-00-0-1	ZK	9-32035-04-0-1	6-22917-00-0-1	6-22916-00-0-1	8-00668-16-0-1				
Profine KBE 58	317		734	9.0					E-13534-12-0-1	ZH					
Profine KBE 58	113	100	133	9.0					9-33663-00-0-1						
Profine KBE 58			731	13.0	9-35508-00-0-1	E-13534-12-0-1	ZH								
Profine KBE 70	375	370	385	13.0	E-15321-00-0-1	E-15321-00-0-1									
Profine Tritec	P 1472	P 1320	P 1659	8.0	20/0°	9-30806-00-0-1	9-30806-00-0-1	ZH							
Profine Trocal 900	920600	910100	935100	9.0	20/0°	9-30806-00-0-1	9-43809-00-0-1								
Profine Trocal 900	920100		935300	13.0		9-37137-00-0-1	E-13534-12-0-1	ZH							
Profine Trocal Confort	120400	111000	130900	13.0					6-22917-00-0-1	6-22916-00-0-1	9-37363-00-0-1				
Pural															
Pural	P 005	P 001	SA/SI	9.0	18/0°	9-30146-11-0-1	E-13534-12-0-1								
Ramplast															
Ramplast Ecotherm	302-01	301-01	304-01	9.0	20/0°	9-31115-00-0-1	E-13534-12-0-1	ZH							
Rehau															
Rehau Geneo	Z 57	72 AD		13.0	25/0°	9-44525-01-0-1	E-13534-12-0-1			6-22917-00-0-1	6-22916-00-0-1	6-34396-00-0-1			
Rehau S 711	551 020	551 150	551 050	9.0	20/0°	E-13685-00-0-1	E-13685-00-0-1	ZK							
Rehau S 730	541 010	541 060	541 100	13.0	18/0°	9-35770-00-0-1	E-13534-12-0-1								
Rehau S 780	634 153	634 133	632 913	9.0	18/0°	E-14339-00-0-1	E-14339-00-0-1								
Roplasto															
Roplasto 6001 Plus S-MD	641300	610102	610700	9.0	20/0°	E-13534-10-0-1	E-13534-10-0-1	ZK							
Salamander															
Salamander bluEvolution 82 AD / MD				13.0	20/0°	9-45847-00/01-0-1	E-13534-12-0-1	ZH		6-22917-00-0-1	6-22916-00-0-1	9-36227-00-0-1			
Salamander bluEvolution	171 020	170 420	176 020			9-38218-00-0-1				6-22917-00-0-1	6-22916-00-0-1	9-36227-00-0-1			
Salamander Design 2D	211 025	210 020	216 020			20/R14				9-38634-00-0-1	6-22917-00-0-1	6-22916-00-0-1	9-39613-00-0-1		
Salamander Design 3D	211 220	110 220				6-22917-00-0-1				6-22916-00-0-1	9-39613-00-0-1				
Salamander Design MD	111 026	110 036	116 025			6-22917-00-0-1				6-22916-00-0-1	9-39613-00-0-1				
Salamander Streamline	251 020	250 220				6-22917-00-0-1				6-22916-00-0-1	9-39613-00-0-1				
Salamander Universal			206 030	9.0	20/0°	9-31750-00-0-1	9-30146-01-0-1	9-32035-03-0-1							
Salamander Universal	201 020	200 020	206 022			9-31750-00-0-1	E-13534-12-0-1	ZH							
Schüco															
Schüco AS	700100	702100	718400	8.2	20/5°	9-30627-00-0-1	9-30627-00-0-1	ZK							
Schüco Corona AS 60	8105	8101	8131	13.0	20/0°	9-38218-00-0-1	E-13534-12-0-1	ZH		6-22917-00-0-1	6-22916-00-0-1	9-36227-00-0-1			
Schüco Corona CT 70	8586	8597	8574							6-22917-00-0-1	6-22916-00-0-1	9-36227-00-0-1			
Schüco Corona MD 60	8121	8116	8137							6-22917-00-0-1	6-22916-00-0-1	9-36227-00-0-1			
Schüco M+A	717903	726703	718303	8.2	20/5°	9-30627-00-0-1	9-30748-03-0-1	ZK							
Schüco MF	717800	717600	718200	9.0											
Soprofen															
Soprofen Serie T 62	BM 100	NS 100	ME 200	9.0	18/0°	E-16237-00-0-1	E-13534-12-0-1								
Spectus															
Spectus Windows	SW 09	SW 05	SW 51	9.0	20/15°	9-30146-05-0-1	9-30146-05-0-1	ZK		6-25416-00-0-1	6-25415-00-0-1	E-13035-00-0-1			
Technoplast															
Technoplast				13.0	20/0°	9-34542-00-0-1	9-34542-00-0-1			6-22917-00-0-1	6-22916-00-0-1	E-11575-00-0-1			



Profile system PVC windows	Sash profile	Frame profile	Dummy mullion profile	Axis mm	Overlap mm / °	Standard striker PU = 100	Dummy-mullion striker (vertical) PU = 100	Rebate lever	Packer lever-operated gear PU = 100	Shoot-bolt top PU = 100	Shoot-bolt bottom PU = 100	Striker 2-sashed PU = 100
Veka												
Veka Artline	103,210	101,210	102,211		20/0°	9-38250-00-0-1	9-43809-00-0-1	ZH				
Veka Compact				9.0		E-18979-00-0-1						
Veka Contour										6-22917-00-0-1	6-22916-00-0-1	E-19551-32-0-1
Veka Softline AD	103,197	101,086	102,196	13.0	20/0°	9-42972-00-0-1	E-13534-12-0-1	ZH				
Veka Softline AD	103,104		102,086				9-34202-00-0-1	ZK				
Veka Softline AD	103,102	101,085	102,118	9.0		9-34202-00-0-1	E-13534-12-0-1	ZH				
Veka Softline MD	103,116	101,098	102,106				9-30146-11-0-1	Euro		6-26071-01-0-1	6-24387-01-0-1	6-27092-00-0-1
Veka Topline AD	103,200	101,200	102,206	13.0		9-42972-00-0-1	E-13534-12-0-1	ZH		6-22917-00-0-1	6-22916-00-0-1	9-36227-00-0-1
Veka Topline MD	103,220	101,220	102,226									
Weltplast												
Weltplast	552000	550000	562000	9.0	-/0°	9-41364-00-0-1	E-13534-12-0-1	ZH		6-22917-00-0-1	6-22916-00-0-1	9-41456-00-0-1
Wymar												
Wymar 2500				13.0	20/0°	E-19550-32-0-1	E-13534-12-0-1	ZH		6-22917-00-0-1	6-22916-00-0-1	E-19551-32-0-1
Wymar 3000	3200	3000	3300		20/10°	9-41839-00-0-1					6-22917-00-0-1	6-22916-00-0-1

Application diagram

for sash weights up to maximum 100 kg – drawing no. 0.45919



Prerequisite for using the application diagram:

- Verifications of the attachment of load-bearing components on the window system by the window fabricator according to the TBDK directive with the following forces:
 - on the stay-bearing with 2710 N
 - on the pivot-rest with 2890 N
- Glass reduction $CG \geq 28$ mm
- Profile weight $PW \leq 3.25$ kg/m

Attention:

The maximum sash weight of 100 kg is only permitted in certain areas of the application diagram.

Only sash formats appearing to the left of the respective glass weight graph are permissible.

■ Format not permitted

Reading examples:

1. Filling weight 60 kg/m²
With SRW = 650 mm, the max. SRH = 2300 mm, which corresponds to a maximum sash weight of 100 kg.
2. Filling weight 40 kg/m²
With SRW = 1200 mm, the max. SRH = 1400 mm, which corresponds to a maximum sash weight of 80 kg.

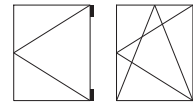
This application diagram is only valid in conjunction with the appropriate installation drawing 0.46740.

For notes on intended use, see 0-46789.

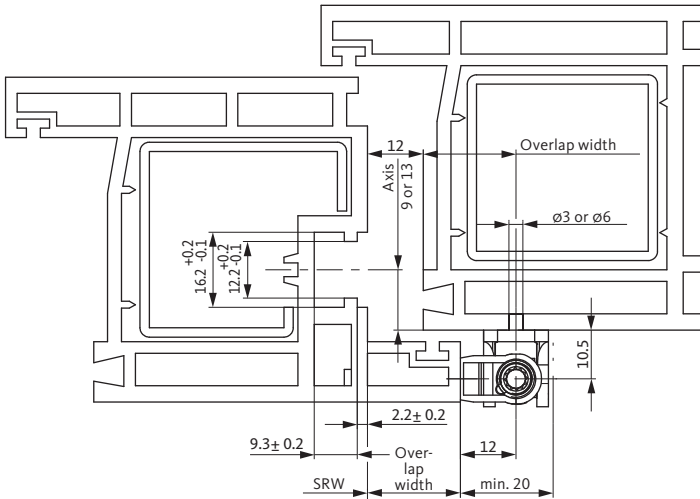
Test and calculation basis:

- Tilt&Turn test acc. to QM 328 or RAL GZ 607/3 Appendix 2:
 - 15,000 Tilt&Turn cycles
 - 10,000 turn cycles
- Test format:
 - SRW 1300 x SRH 1200 : 100 kg

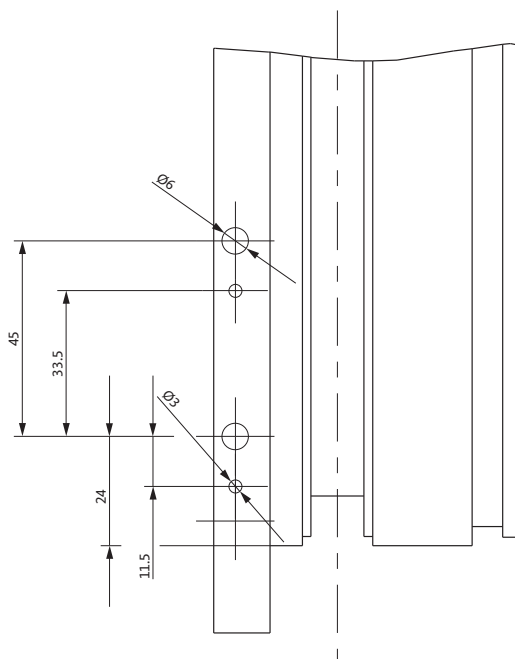
Note: The product information of the system supplier, especially regarding design and fabrication, maximum sash dimensions and maximum sash weights as well as material qualities, e.g. linear expansions of profiles, must be observed.



Hinge dimensions EURO-JET D



EURO-JET D drill-in hinge screw and position dimensions without (turn-restriction) brake

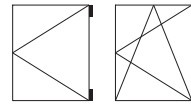


Drilling jigs for drill-in hinge

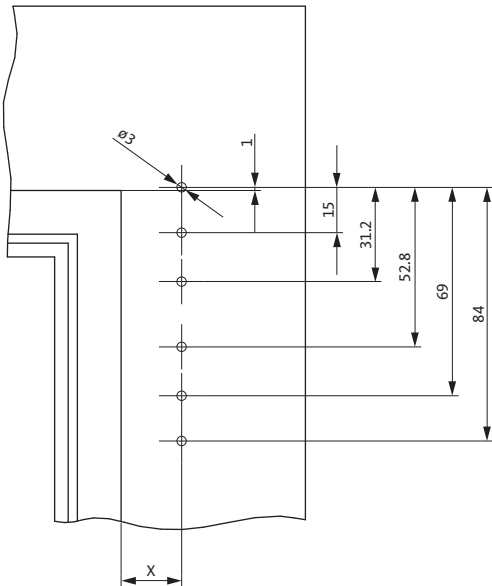
Order number	Axis
6-27410-09-0-00	9 mm
6-27410-13-0-00	13 mm

Note: The product information of the system supplier, especially regarding design and fabrication, maximum sash dimensions and maximum sash weights as well as material qualities, e.g. linear expansions of profiles, must be observed.

Rebate, screw and position dimensions



Screw and position dimensions EURO-JET D stay-bearing and pivot-rest



Dimension X = setting the overlap width on the drilling jig scale

Dimension X = overlap (18, 20 or 22 mm)

Drilling jig for pivot-rest and stay-bearing, drilling diameter 3 mm

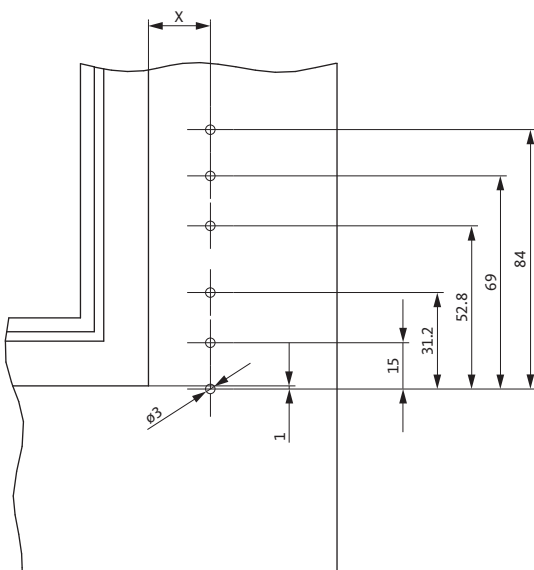
Order number	for profile systems
6-27412-04-0-00	Standard
6-27412-01-0-00	e.g. Gealan S3000, Wymar
6-27412-02-0-00	e.g. Brüggmann AD, Roplasto, Veka, KBE
6-27412-03-0-00	e.Bg. Aluplast, Rehau, Salamander 2D, Trocal, Schüco Corona

Further profile systems are available on request

Drilling jig for pivot-rest and stay-bearing, drilling diameters 3 mm and 6 mm

Order number	for profile systems
6-27412-54-0-00	Standard
6-27412-51-0-00	e.g. Gealan S3000, Wymar
6-27412-52-0-00	e.g. Brüggmann AD, Roplasto, Veka, KBE
6-27412-53-0-00	e.Bg. Aluplast, Rehau, Salamander 2D, Trocal, Schüco Corona

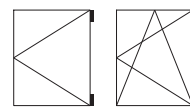
Further profile systems are available on request



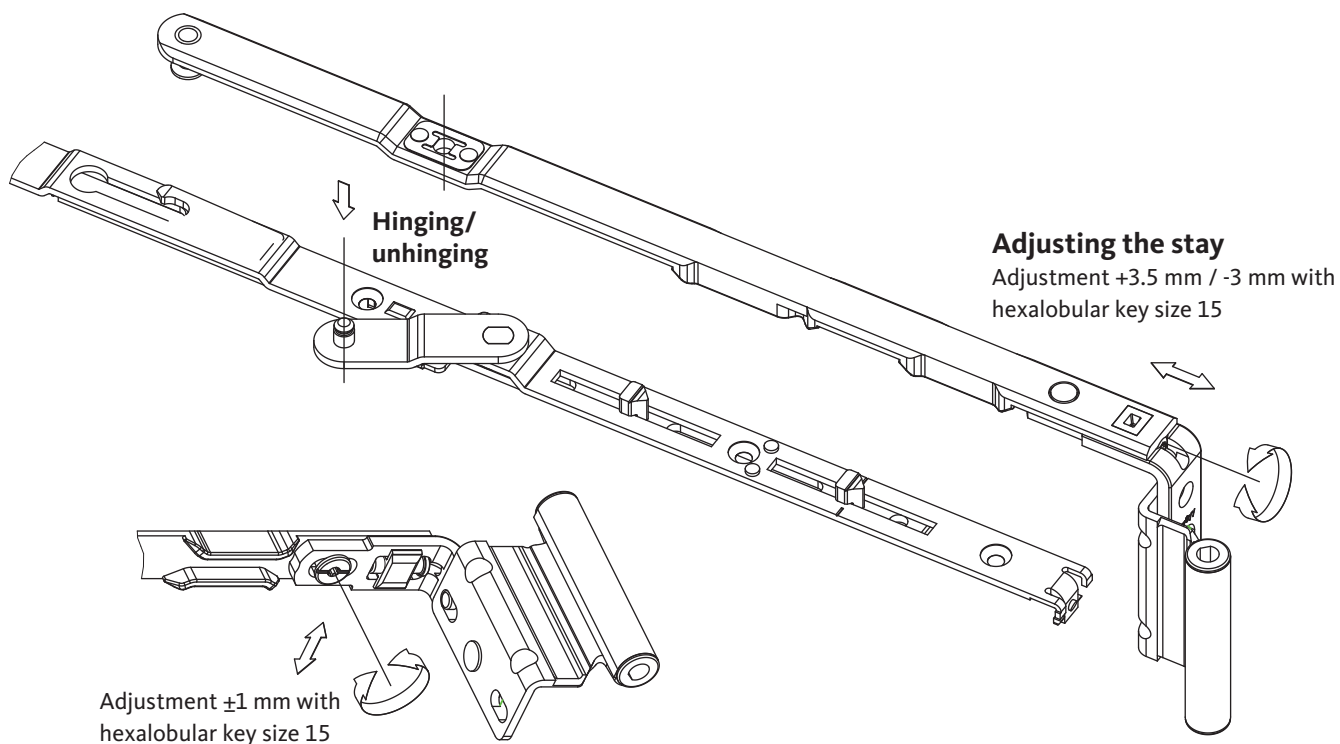
Dimension X = setting the overlap width on the drilling jig scale

Dimension X = overlap (18, 20 or 22 mm)

Note: The product information of the system supplier, especially regarding design and fabrication, maximum sash dimensions and maximum sash weights as well as material qualities, e.g. linear expansions of profiles, must be observed.



Hinging and unhinging the stay

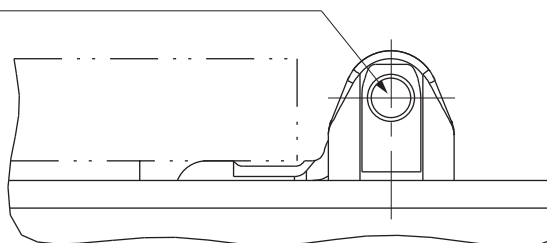


Installing the stay-bearing pin

ATTENTION:

- Close sash
- Turn handle in tilt position
- Push in the stay-bearing pin flush with the stay-bearing - from below

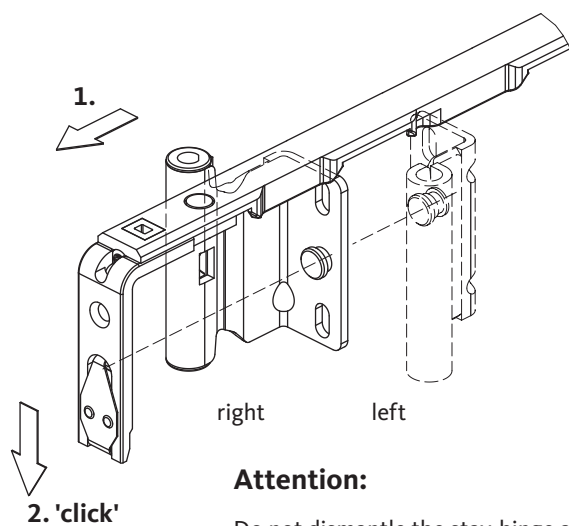
Slightly lift sash on drive-gear side for easier mounting. Tighten the stay-bearing pin with tool 6-37291 or a screwdriver with slotted end 5x1 mm.



Notes on installation and setting



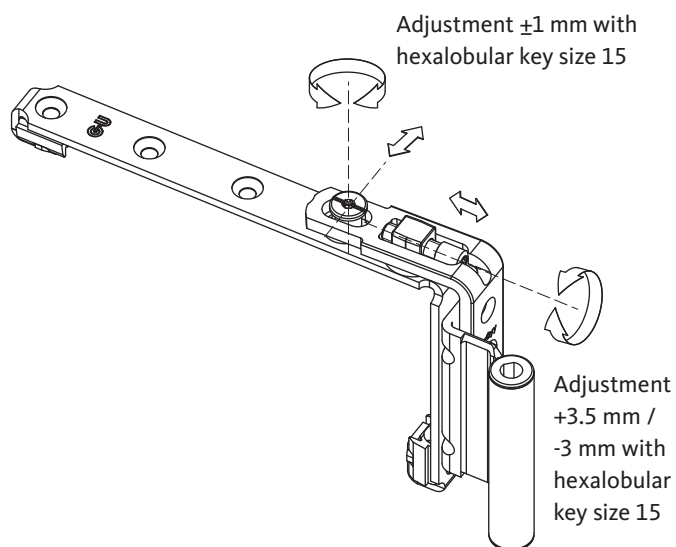
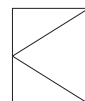
Installing the Tilt&Turn stay-hinge



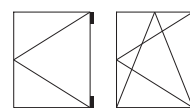
Attention:

Do not dismantle the stay-hinge again after the audible "click"

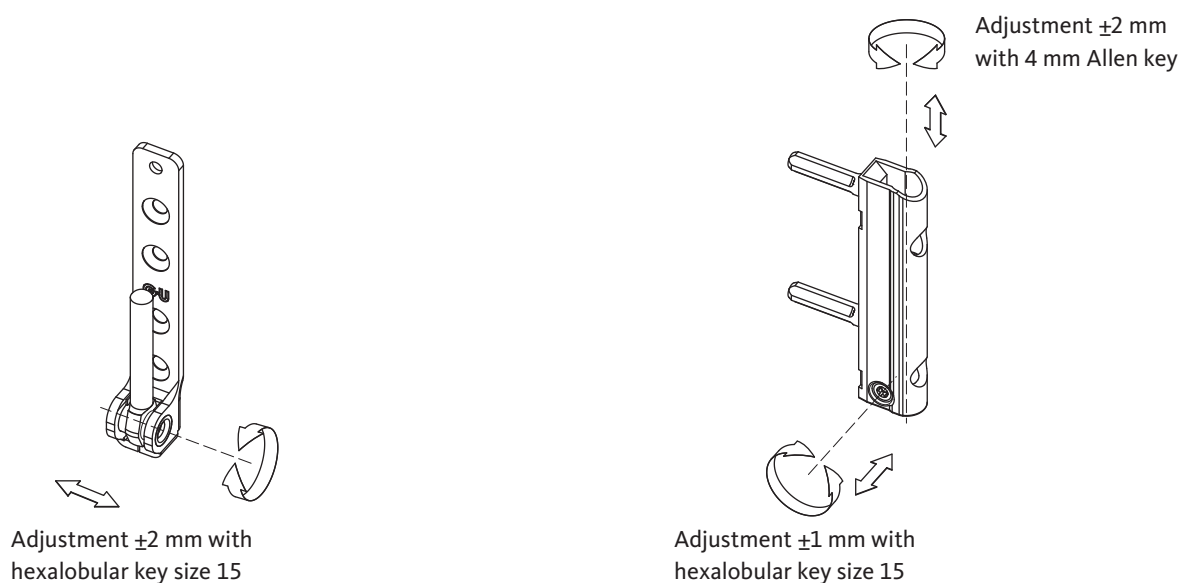
Adjusting the Turn-Only hinge



Note: The product information of the system supplier, especially regarding design and fabrication, maximum sash dimensions and maximum sash weights as well as material qualities, e.g. linear expansions of profiles, must be observed.

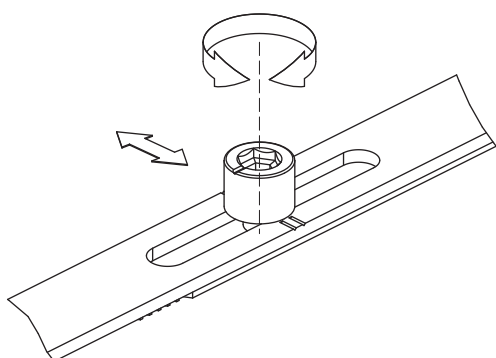


Adjusting on pivot-rest and drill-in hinge

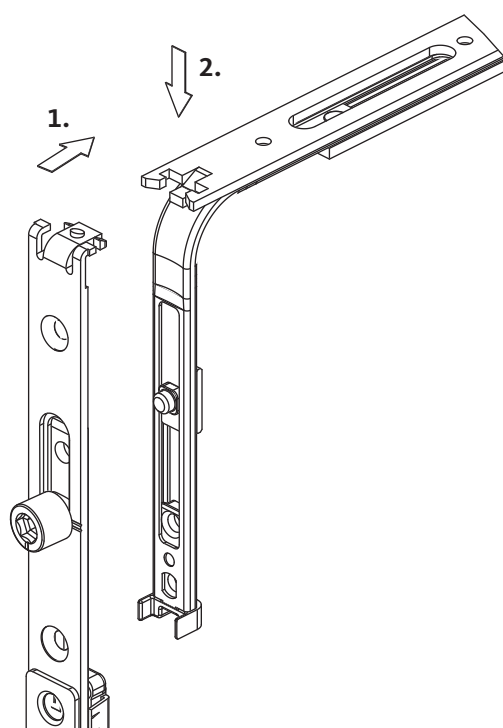


Adjusting the Duplex locking cam

Gasket pressure ± 1 mm with 4 and 6 mm Allen key

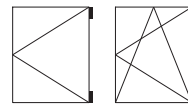


Hinging the central locking system

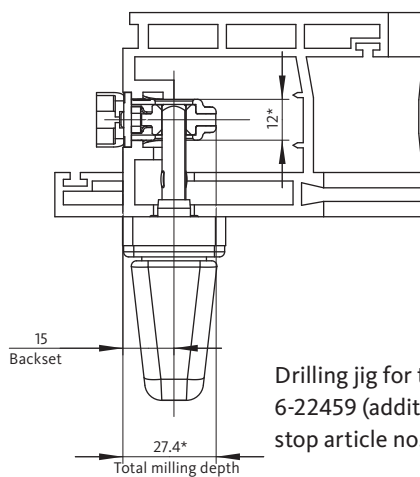
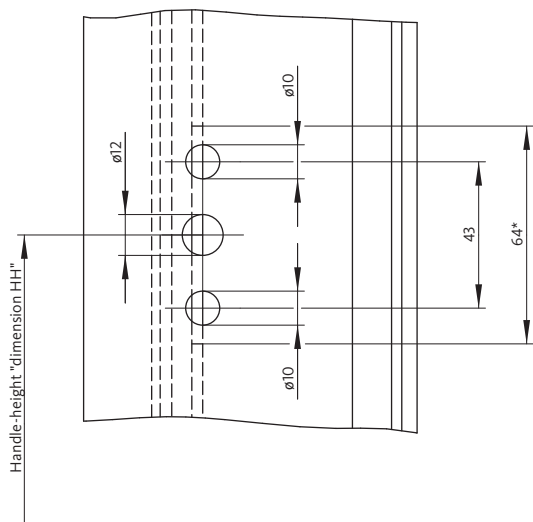


Note: The product information of the system supplier, especially regarding design and fabrication, maximum sash dimensions and maximum sash weights as well as material qualities, e.g. linear expansions of profiles, must be observed.

Notes on installation and setting



Drive-gear installation dimensions

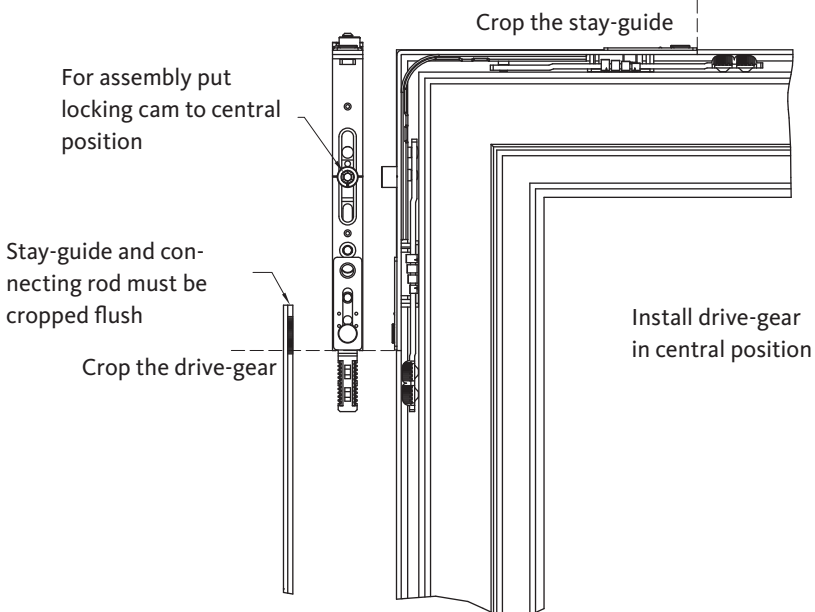


Drilling jig for turn handle article no. 6-22459 (additionally for FHH drive-gear: stop article no. 9-27406)

* Milling dimension of drive-gear case

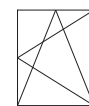
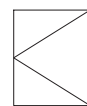
Cropping the drive-gear and stay-guide

Stay-guide and connecting rod must be cropped flush



Note: The product information of the system supplier, especially regarding design and fabrication, maximum sash dimensions and maximum sash weights as well as material qualities, e.g. linear expansions of profiles, must be observed.

Overview for ordering drilling jigs and adjusting tools



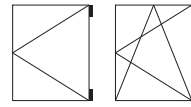
Drilling-jigs

Application	Designation	PU	Order number	
Installing the pivot-rest and stay-bearing	EURO-JET D Tilt&Turn hardware, EURO-JET D Turn-Only hardware			
	Drilling-jig for drill-in hinge			
	9 mm axis	1	6-27410-09-0-0	
	12.9 mm axis	1	6-27410-13-0-0	
	Drilling jig for drill-in hinge with optional adjustable gasket pressure			
	9 mm axis	1	6-29167-00-0-0	
	13 mm axis	1	6-29167-13-0-0	
	Drilling jig for pivot-rest and stay-bearing, drilling diameter 3 mm			
	Standard version	1	6-27412-04-0-0	
	Profile-specific drilling jigs		1	6-27412-03-0-0
			1	6-27412-02-0-0
			1	6-27412-01-0-0
	Drilling jig for pivot-rest and stay-bearing, drilling diameters 3 and 6 mm			
	Standard version	1	6-27412-54-0-0	
Profile-specific drilling jigs		1	6-27412-53-0-0	
		1	6-27412-52-0-0	
		1	6-27412-51-0-0	
Installation of strikers	1 set of positioning jigs for strikers, fixed handle height, striker length 55 mm	1	6-32644-00-0-0	
	1 set of positioning jigs for strikers, variable handle height, striker length 55 mm	1	6-32645-00-0-0	
Installation of turn handle	Drilling jig for turn handle, drive-gear with 15 mm backset	1	6-22459-00-0-0	
	Stop for 6-22459 (for fixed handle height)	1	9-27406-00-0-1	
Centre-closer	Drilling jig for centre-closer for screwing on K-14239-**-0-*	1	G-13154-12-0-0	
Striker installation on 2-sashed windows and balcony-doors	Positioning jig for 2-sashed windows and balcony-doors with symmetrical division	1	6-32963-00-0-1	

Adjustment tools

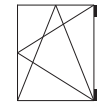
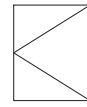
Application	Designation	PU	Order number	
Stay-arm, drill-in hinge, Rebate corner-hinge, pivot-rest Locking cam	Ratchet wrench bit driver	1	H-00866-00-0-0	
	Flexible bit-holder with flexible shank	1	H-00757-00-0-0	
	Bits for bit-wrench and bit-holder			
	Size	Length mm		
	Torx 15 bit	15	1	H-00822-15-0-0
	Torx 15 bit	50	1	H-00819-15-0-0
	Torx 15 bit	75	1	H-00820-15-0-0
	4 mm Allen bit	50	1	H-01419-50-0-0
	Torx wrench	Size Torx 15	1	H-00809-15-0-0
	L-shaped Torx wrench	Size Torx 15	1	9-43631-00-0-6
	Allen key	Size 4	1	9-43631-64-0-6
	Adjusting tool, complete with bit-wrench and bits		1	6-37291-00-0-1
	Adjusting tool, complete version as fan		1	6-37845-00-0-1
	Pull-handle for stay-bearing pin		1	6-38513-01-0-9
	4 mm adjusting tool U-shaped		1	9-43631-64-0-0
	15 mm Torx adjusting tool U-shaped		1	9-43631-00-0-6
	15 mm Torx adjusting tool L-shaped		1	9-43886-00-0-0
15 mm Torx adjusting tool T-handle		1	H-00346-15-0-0	

List of installation drawings



EURO-JET installation drawings

Drawing number	Description		
0.44866-DD-0-0	Central locking system	Tilt&Turn and Turn-Only hardware	Fixed and variable handle height
0.46740-DD-0-0	Hinge side	Tilt&Turn and Turn-Only hardware	Hinge side D
0.46572-DD-0-0	Lever-operated gear	Passive-sash hardware	Fixed handle-height
0.46573-DD-0-0	Lever-operated gear	Passive-sash hardware	Variable handle-height
0.43291-DD-0-0	Additional stay	Tilt&Turn hardware	Axis 9 and 13 mm
0.45919-DD-0-0	Application diagram	Tilt&Turn and Turn-Only hardware	Sash weights up to max. 100 kg



Sorting in alphabetical order

Abbreviation	Description
CV	Cover cap
SM	Surface-mounted
PN	Pin
Tu-On	Turn-Only windows or balcony-doors
T&T	Tilt&Turn windows or balcony-doors
BS	Backset
CH	Corner-hinge
DIH	Drill-in hinge
PR	Pivot-rest
CD	Corner-drive
ST	Sash thickness
RCH	Rebate corner-hinge
SRW	Sash rebate width
SRH	Sash rebate height
SW	Sash weight
LOG	Lever-operated gear
HH	Handle height
GR	Drive-gear
FHH	Fixed handle height (drive-gear)
VHH	Variable handle height (drive-gear)
Ti-On	Tilt-Only window
FHH	Fixed handle height
L	left
WB	with (turn-restriction) brake
AX	Axis
WOB	without (turn-restriction) brake
PC	Profile cylinder
R	right
SSG	Stay-guide
SA	Stay-arm
SH	Stay-hinge
SB	Stay-bearing
SBP	Stay-bearing pin
STR	Striker
LC	Locking cam
TBDK	Directive: Attachment of load-bearing components of Turn-Only and Tilt&Turn hardware
OL	Overlap (generally refers to the overlap width)
OLW	Overlap width
OLH	Overlap height
PU	Packaging unit
CL	Centre lock
VHH	Variable handle height
VHBE	Directive: Hardware for windows and balcony-doors, guidelines/advice for end-users
VHBH	Directive: Hardware for windows and balcony-doors, guidelines/advice on the product and on liability
ZH	Lever-operated gear with riveted-on toggle lever
ZK	Lever-operated gear with loose toggle lever
CLS	Central locking system



Hardware versions

Turn-Only and Tilt&Turn hardware

Definition

For the purpose of this definition, Turn-Only and Tilt&Turn hardware is single-handle Turn-Only and Tilt&Turn hardware for windows and balcony-doors in building construction. Their purpose is to put window and balcony-door sashes in a turn-only position, or a tilt position which is restricted by the design of the stay, by operating a hand lever.

Use

Turn-Only and Tilt&Turn hardware is used for vertically installed windows and balcony-doors made of timber, PVC, aluminium or steel and combinations of these materials. For the purpose of this definition, conventional Turn-Only and Tilt&Turn hardware locks window and balcony-door sashes, or puts them into different ventilation positions. As a rule, the opposing force of a gasket must be overcome when closing.

Additional hardware for Turn-Only and Tilt&Turn hardware, fanlight hardware

Definition and use

For the purpose of this definition, rebate stays as well as security and cleaning stays in fanlight openers limit the tilting movement of the window sash once the stay has been detached. The catch position thus achieved is slightly larger than the opening width achieved by the opening stay. Rebate and cleaning stays also hold the window sash in the cleaning position. For the purpose of this definition, hardware for coupled sashes consists of hinges that allow the coupled sash to be opened to clean the inner surfaces of the glass and couplings that lock the coupled sash on the side opposite the hinge. Operation of the coupled sash hardware for any other purpose other than cleaning the glass does not correspond to the intended use. For the purpose of this definition, window friction stays restrict the movement of Turn-Only sashes and of Tilt&Turn sashes in turning position – e.g. by means of friction. Depending on the intensity of the friction, they have the effect of fixing the sash in position without limiting the opening. For the purpose of this definition, hanging bearings are Tilt-Only hinges that, due to the position of their centre of rotation and because a maximum dimension for the sash overlap of the window sash below is taken into account, allow the tilt sash to be opened by 180°. When this additional hardware is used, the product information on the main hardware and information on its intended use must be observed.

Deviating use – Exclusion of liability

Any deviating usage is considered as unintended use and leads to exclusion of liability.

Notes regarding use restrictions

Opened balcony-door and window sashes as well as window and balcony-door sashes that are not locked or put in the tilt position only provide a shielding function and do not satisfy the requirements for joint impermeability, resistance to driving rain, sound insulation, thermal insulation and burglar inhibition. Windows and balcony-doors must be closed and locked if wind or draughts are present. Wind and draughts are present if the window or balcony-door opens and closes of its own accord without control in one of the opening positions due to air pressure/suction. Window and balcony-door sashes can only be fixed in the open position with additional locking hardware.

Necessity of special agreements in case of extended requirements

Burglar-inhibiting windows and balcony-doors and windows and balcony-doors for wet rooms and for use in environments whose air contains aggressive and corrosive substances require hardware with performance characteristics that are harmonised and agreed separately for each individual application. Their resistance to wind loads when closed and locked depends on the construction of the relevant window and balcony-door. If it is necessary to absorb specified wind loads (according to EN 12210 for example – especially testing pressure p3), suitable hardware combinations must be coordinated and agreed on the basis of the window or balcony-door construction and frame material. Generally the hardware as defined in 1.1 meets the requirements of barrier-free apartments (e.g. according to DIN 18040). However, corresponding hardware combinations and installations are required in the windows and balcony-doors that must be coordinated and agreed separately.



5-year guarantee for the EURO-JET Tilt&Turn hardware range

In addition to the statutory rights in accordance with general sales, supply & payment conditions, GRETSCH-UNITAS GmbH Baubeschläge offers its contractual partners in purchase contracts the following guarantee on all load-bearing parts (with the exception of electronic components) supplied within the scope of the GU EURO-JET hardware programme:

Guarantee promise

GRETSCH-UNITAS GmbH Baubeschläge guarantees all load-bearing parts against breakage during the guarantee period, providing the guarantee conditions are complied with.

The **guarantee period** is 5 years, beginning with the delivery of the goods (§ 477 German Civil Code).

The performance of the guarantee is specified as follows:

In the event of any material breakage, a replacement will be delivered free of charge. Should any parts be discontinued, then an alternative part of equal specification will be delivered. Any such parts claimed under the terms of this guarantee will be delivered to the delivery address of the original sales invoice.

Terms of guarantee

The guarantee is deemed valid only on condition that the hardware has been installed and operated correctly and in full accordance with the manufacturers' guidelines and that the following maintenance works have been carried out provably at least once a year:

- Operational check and lubrication of all moving parts and locking points. Only cleaning agents that do not affect the corrosion protection may be used.
- The surface is subject to guarantee only if it has not been affected by aggressive substances from the frame material, any paint finish or the environment.
- All size and weight limitations as specified in the installation instructions shall be adhered. All security-relevant hardware components must be checked regularly for secure fixing and wear and tear. If necessary, fixing screws must be re-tightened or replaced. Adjustment, parts replacement and hinging/unhinging of opening sashes are to be carried out by specialists only.

In the event of any claim, a written notification within the guarantee period and within 6 months of the product failure is required. Claims under the guarantee shall be time-barred after 6 months following the incident which led to the claim.

Our warranty liability in accordance with the provisions in our General Terms and Conditions is not limited by this promise of guarantee within the duration of the statutory warranty period. Likewise, the statutory warranty liability is not extended by this guarantee promise. The terms of this guarantee are limited to the criteria above and do not cover any associated damages, assembly/disassembly costs or consequential loss claims.

Exclusion of liability

The products of the Gretsch-Unitas Group are permanently adapted and developed to meet the growing demands of the market.

We also reserve the right to make changes serving to advance the state of the art.

Further reasons for modification may be:

- global technical development
- changes and adaptations in the product range
- adaptation to changed laws and technical standards

The content of our documents was compiled with the greatest possible care. However, we accept no responsibility for errors or inaccuracies in relation to representation and description of the products.

Thank you for your understanding.



Misuse

Misuse – by which is meant use of the product not in accordance with the intended use – of the aforementioned hardware for balcony-doors and windows specifically refers to the following cases in particular:

- if obstructions are placed in the opening area between the frame and sash, thus making its intended use more difficult or preventing it altogether,
- if additional loads act on the window or balcony-door sashes (i.e. children swinging on these),
- if window and balcony-door sashes are pushed or even slammed in a manner which is not in accordance with their intended purpose or is not controlled (e.g. due to wind) with the result that either the hardware, frame materials or other individual parts of the window sashes or balcony-doors are damaged or destroyed or where consequential damage could occur,
- if persons reach between the sash and frame or if a person or parts of the body are in this area (danger to life and limb) when closing (or pushing shut).

Referring to fanlight hardware in particular

- if the stay-arms are not engaged and secured in compliance with the manufacturer's instructions.
- if, with the opening stay unhinged, the window sash is not put into the appropriate cleaning position.

Product performance – information on application by manufacturer

Maximum sash weights

The sash weights and maximum sash dimensions prescribed by the manufacturer for the individual hardware versions must not be exceeded. The component with the lowest permissible load capacity determines the max. sash weight. Application diagrams and assignment of components must be observed.

Additionally with fanlight hardware

Apart from the sash weight, the distance between the sash's centre of gravity and its pivotal point is decisive for determining the maximally allowed sash dimensions. When determining the maximum sash size and the number of coupled sashes, it is important to observe the manufacturer's instructions referring to the particular type of drive.

Sash sizes

The application diagrams in the planning documents, product catalogues or hardware installation instructions show the relationships between the permissible sash widths and sash heights and different glass weights or total glass thicknesses. The sash dimensions or orientation (portrait or landscape format) thus determined – as well as the maximum sash weight – must on no account whatsoever be exceeded.

Composition of the hardware

The specifications of the manufacturer regarding hardware configuration (e.g. use of additional stays, design of hardware for burglar-inhibiting window and balcony-door sashes, etc.), are binding.



Duty to inform and to instruct

In order to fulfil the duty to inform and instruct and also carry out maintenance work, the following documents in particular are available and must be forwarded via every intermediary and fabricator through to the end customer:

- Planning documents
- Product catalogues
- Hardware installation instructions
- Maintenance and care instructions and operating instructions, hereafter referred to as a whole or in part as "Product information" only for short.

In order to ensure the reliability of the corresponding function of windows and balcony-doors:

- planners must obtain and observe the "Product information" from the manufacturer or specialist retailer,
- specialist retailers must observe the "Product information" – particularly in relation to advertising measures – and hand this to the next dealer and/or fabricator with the instructions also to pass these on to their purchaser,
- fabricators must observe the "Product information" and in particular pass the maintenance and care instructions and operating instructions to the clients and users.

Use for similar hardware

The possible variants within the individual hardware systems – e.g. Tilt-Only and Top-Hung sash hardware, or those that offer a ventilation position instead of or in addition to the tilt position where the sash is parked parallel in order to produce a continuous all-round gap – must be dealt with in a similar fashion in terms of product information and intended use, misuse, product performance, product maintenance and duty to inform and instruct, depending on the relevant characteristics. Information provided by the Lock and Hardware Industry Trade Association e. V. Velbert Postfach 10 03 70, D-42503 Velbert.

The following documentation concerning the correct handling of hardware for windows and balcony-doors with detailed information and explanatory pictograms can be downloaded from the association's website (<http://www.fvsb.de/ggsb/richtlinien.asp>):

- Hardware for windows and balcony-doors Guidelines/advice on product and liability
- Hardware for windows and balcony-doors Guidelines/advice for end users
- Attachment of load-bearing components for Turn-Only and Tilt&Turn hardware with definitions for Turn-Only and Tilt&Turn hardware and also possible installation positions.



General notes

Safety-relevant hardware components must be checked at least once a year to ensure they are secure and not worn. If necessary, fixing screws must be re-tightened or replaced. Furthermore the following verifiable maintenance work must be carried out at least once a year:

- Operational check and lubrication of all moving parts and locking points.
- Only cleaning agents and care products that do not interfere with the corrosion protection of the hardware may be used.

Adjustment work on the hardware – particularly in the area of pivot-rests or stays – as well as parts replacement and hinging/unhinging of the opening sashes, must be carried out by specialists only. When a surface treatment is applied – e.g. painting or varnishing – to the window and balcony-doors, all hardware components must be excluded from the treatment and therefore protected against contamination.

Maintaining the finish quality

Electrolytically applied zinc coatings are not affected by normal room climates, providing condensation does not form on the hardware components or condensation that occasionally forms is able to quickly dry. To maintain the surface quality of the hardware components on a lasting basis and prevent defects as a result of corrosion, observe the following points without fail:

- The hardware or rebate areas must be sufficiently ventilated – especially in the construction phase – to ensure they are not exposed directly to the effects of moisture or condensation. Ensure by taking appropriate (and lasting) measures that moist room air cannot condense in the rebate areas.
- The hardware must be kept free of deposits and contamination by construction materials (building dust, gypsum plaster, cement, etc.). Any plaster, mortar or similar must be removed prior to hydration with water.
- Aggressive vapours (e.g. caused by formic acid or acetic acid, ammonia, amine or ammonia compounds, aldehyde, phenols, chlorine, tannic acid, etc.) may promote rapid corrosion of the hardware components when combined with even small amounts of condensation. These kind of vapours must therefore be kept away from the window without fail.
- With windows and balcony-doors made of oak timber or another species containing a high proportion of (tannic) acid, make sure by applying a suitable surface treatment to the window that these substances cannot evaporate from the timber. The hardware must not come into direct contact with an untreated timber surface.
- Furthermore, acetic or acid cure sealants or sealants containing the ingredients referred to above must not be used as both direct contact with the sealant as well as the vapours it produces can attack the surface of the hardware.
- The hardware must only be cleaned using mild, pH-neutral cleaning agents in diluted form. Aggressive cleaners containing acid with all the ingredients referred to above or scouring agents must not be used on any account whatsoever.



Exclusion of liability

The information provided in this published document consists of product descriptions. This is general information based on our experience and tests and therefore does not take any specific application into account. No claims for compensation can be made on the basis of the product descriptions.

Although we have made every attempt to ensure the information provided here is accurate, it is non-binding. It should be adapted to the respective construction projects, usage and specific on-site demands.

The published document has been compiled to the best of our knowledge. The Gretschi-Unitas Group accepts no liability for any errors. The document is subject to modifications during the course of technical developments.

The product images shown in the published document may differ from the actual product.

Copyright notice

© All illustrations and texts in this published document are protected by copyright. Unless otherwise stated in the image credits, the rights belong to the Gretschi-Unitas Group. Any use of copyright protected materials without the consent of the holder of the rights is prohibited.



WINDOW TECHNOLOGY
DOOR TECHNOLOGY
AUTOMATIC ENTRANCE SYSTEMS
BUILDING MANAGEMENT SYSTEMS

Gretsch-Unitas GmbH
Baubeschlage
Johann-Maus-Str. 3
D-71254 Ditzingen
Tel. + 49 (0) 7156 301-0
Fax + 49 (0) 7156 301-77980

BKS GmbH
Heidestr. 71
42549 Velbert, Germany
Tel. + 49 (0) 2051 201-0
Fax + 49 (0) 2051 201-9733

www.g-u.com

Securing technology for you

