



### New Products:

#### **MB Hercules Ex**

Explosion Proof handheld UV light

#### **GX Orion**

Remote controlled overhead UV Light

#### **MB Iris**

Camera mounted UV Light

#### **MB Poseidon**

Blue handheld Light



# LABINO NDT





**ADVANCED NDT LTD**

[www.advanced-ndt.co.uk](http://www.advanced-ndt.co.uk)

Labino AB  
50 Countries – 80 Distributors – 25 Service Centers





# Contents



Introduction 4

## **LABINO LED LAMPS** 5

Summary of features 6

Summary of ASTM, ISO and PRIMES compliance 7

*New!*

MB Hercules Ex 8

*New!*

MB Zeus, MB Hermes, MB Iris and MB Poseidon 10

BB Helios and BB Ikaros 13

*New!*

GX Orion 16

UVG3 and UVG5 19

## **LABINO RADIOMETER/PHOTOMETER** 22

Apollo 1.0 22

## **LABINO MPXL LAMPS** 24

Summary of features 25

SuperXenon 50 W  
and SuperXenon 35 W 26

Compact and DUO 35 W 28

TrAc Light and TrAc Light PRO 30



” Innovative thinking  
and products is  
business as usual ”

**Warm greetings** to you from the Labino team, the global leader in high quality UV Inspection lights and measurement instruments.

It is often said by business leaders that innovation is everything. At Labino innovative thinking and products is business as usual. That is why browsing through this brochure you will find products that are original and cannot be found elsewhere. We are proud to be a source of inspiration for the industry with our first to market products. Enjoy using our explosion proof UV lights, water proof UV lights, wireless UV meters and more.

Over the years, Labino raised the bar with products of uncompromising quality and reliability that are in compliance with a wide range of Industry standards such as ASTM E3022-15 and ISO 3059-12, as well as PRIMES requirements such as Rolls-Royce RRES 90061, Airbus AITM6-1001, USAF, The Boeing Co., Pratt & Whitney.

Labino products are present in over 50 countries via distributors and service centres for local support. NDT technicians in the aerospace sector, military, transportation, oil and gas, mining, inspection shops, alternative energy, and more have trusted Labino products since 1994. My personal commitment is to continuously develop unique high quality products and serve you with a sense of responsibility. If you have any questions, suggestions or complaints please contact me directly at [lisel.athanasiadis@labino.com](mailto:lisel.athanasiadis@labino.com). My kindest regards to you and your team,



**Lisel Athanasiadis**  
Managing Director



## NDT Industries

We find solutions to your specific needs:



### AEROSPACE

All PRIMES have a choice of a Labino UV light that complies with their respective internal requirements



### MARITIME

Durable and waterproof products tested to function in extreme weather conditions



### DEFENSE

Products built to comply with military specifications and standards



### PIPELINES

All Labino handheld lamps have a battery option for field inspections



### AUTOMOTIVE

Light and compact lights used 24 x 7 in a serial production environment



### OIL & GAS

Explosion proof products keep your personnel and physical assets safe

# Labino LED Lamps

**We thoroughly investigate the specific needs of every industry and design unique products that address them.**

**Labino offers** a wide range of LED lamps, equipped with a variety of features, to satisfy the needs of UV light users in all industries engaging with magnetic particle and liquid penetrant inspections. Labino products are especially designed to offer convenience without compromising performance. The key characteristic of all Labino LED products is that they weigh less than many comparable products on the market today and they are extremely durable.

At Labino we thoroughly investigate the specific needs of every industry and design unique products that address them. In critical industries such as aerospace, oil & gas and defense where the risk of an explosion is high, safety should be a priority. We are introducing to the market the first handheld explosion proof UV inspection light, MB Hercules Ex. This product prevents the loss of life and protects your assets.

Our LED product portfolio has grown even more with MB Iris, MB Poseidon, and GX Orion. All our LED products have been tested against industry standards such as ASTM E3022-15, EN ISO 3059-12 and specifications of PRIMES such as Rolls-Royce RRES 90061 and Airbus AITM6-1001. A summary of product compliance is provided in this section.

### New LED Products

MB Hercules Ex has successfully completed all tests leading to the ATEX certification for Group II, Zone II (Certificate: ITS17ATEX402144X), IECEx, NFPA 70 Article 500 for Class I (divisions II locations), the Salt Fog Test as per MIL-STD-810F, and the Explosive Atmosphere Test as per MIL-STD-810G. This unique product complies with ASTM E3022-15, Rolls-Royce RRES 90061 and Airbus AITM6-1001.

Labino's LED overhead inspection lamp, GX Orion, is a modular system that can be used to cover large areas. There are three different models to choose from, remote controlled with multiple UV intensities, UV on/off button only, UV and visible light on/off buttons only.

MB Iris is an extremely compact light that can be used together with automated systems that incorporate cameras to inspect hard to reach areas.

MB Poseidon is a blue light with 440 nm wavelength.

## Summary of features available with each LED Model

Labino AB LED UV Lights	Built in White Light LED	Initial UV Intensity at 38 cm (15") ( $\mu\text{W}/\text{cm}^2$ )	Number of LED's	Weight	Battery Option	Mains Option	White Light Block Filter	Beam Size (> 1 200 $\mu\text{W}/\text{cm}^2$ )	Available Power
<b>GX SERIES – OVERHEAD LIGHT</b>									
<b>GX Orion</b> REMOTE	X	1 500-7 000	10	2.6 kg (5.8 lbs)	–	X	X	330 mm X 230 mm	100v-230v
<b>GX Orion</b> UV & WH	X	≈ 7 000	10	2.5 kg (5.5 lbs)	–	X	X	330 mm X 230 mm	100v-230v
<b>GX Orion</b> UV	–	≈ 4 500	10	2.5 kg (5.5 lbs)	–	X	X	260 mm X 180 mm	100v-230v
<b>BB SERIES – HANDHELD LIGHT</b>									
<b>BB Helios</b>	–	≈ 8 500	9	Mains: 1.2 kg (2.64 lbs) Battery: 1.7 kg (3.74 lbs)	X	X	X	Ø 275 mm (10.8 ")	100v-230v 100v-230v
<b>BB Ikaros</b>	–	≈ 4 000	9	Mains: 1.2 kg (2.64 lbs) Battery: 1.7 kg (3.74 lbs)	X	X	X	Ø 250 mm (9.8 ")	100v-230v
<b>MB SERIES – HANDHELD LIGHT</b>									
<b>MB Hercules Ex</b>	–	≈ 4 000	4	888 grams (2.0 lbs)	X	–	X	Ø 190 mm (7.5 ")	100v-230v
<b>MB Zeus</b>	X	≈ 4 000	4	Mains: 732 grams (1.6 lbs) Battery: 781 grams (1.7 lbs)	X	X	X	Ø 200 mm (7.9 ")	100v-230v
<b>MB Zeus</b> with Athena	X	≈ 4 000	4	800 grams (1.8 lbs)	X	–	X	Ø 200 mm (7.9 ")	100v-230v
<b>MB Hermes</b>	–	≈ 4 000	4	Mains: 732 grams (1.6 lbs) Battery: 781 grams (1.7 lbs)	X	X	X	Ø 190 mm (7.5 ")	100v-230v
<b>MB Hermes</b> with Athena	–	≈ 4 000	4	800 grams (1.8 lbs)	X	–	X	Ø 190 mm (7.5 ")	100v-230v
<b>MB Iris</b>	–	≈ 4 000	4	568 grams (1.3 lbs)	–	X	X	Ø 190 mm (7.5 ")	100v-230v
<b>MB Poseidon</b>	–	Blue Light (440 nm)	4	Mains: 732 grams (1.6 lbs) Battery: 781 grams (1.7 lbs)	X	X	X	–	100v-230v
<b>UVG SERIES – FLASHLIGHT / HEADLIGHT</b>									
<b>UVG<sub>3</sub></b> Spotlight	–	≈ 25 000	1	Battery: 211 grams (7.4 oz)	X	–	X	Ø 30 mm (1.2 ")	100v-230v
<b>UVG<sub>3</sub></b> Midlight	–	≈ 8 000	1	Battery: 211 grams (7.4 oz)	X	–	X	Ø 100 mm (3.9 ")	100v-230v
<b>UVG<sub>3</sub></b> Floodlight	–	≈ 3 000	1	Battery: 211 grams (7.4 oz)	X	–	X	Ø 130 mm (5.1 ")	100v-230v
<b>UVG<sub>5</sub></b> Spotlight	–	≈ 25 000	1	Battery: 211 grams (7.4 oz)	X	–	X	Ø 30 mm (1.2 ")	100v-230v
<b>UVG<sub>5</sub></b> Midlight	–	≈ 8 000	1	Battery: 211 grams (7.4 oz)	X	–	X	Ø 100 mm (3.9 ")	100v-230v
<b>UVG<sub>5</sub></b> Floodlight	–	≈ 3 000	1	Battery: 211 grams (7.4 oz)	X	–	X	Ø 130 mm (5.1 ")	100v-230v

PLEASE NOTE: The above models are in compliance with the above ASTM and ISO standards as well as industry specifications as indicated on the table above irrespective of the power source (Battery or Mains).





Compliance with relevant ASTM and ISO Standards as well as Industry Engineering specifications

Labino AB LED UV Lights	Built in White Light LED	UV Intensity at 38 cm (15") (µW/cm <sup>2</sup> )	COMPLIES WITH ASTM E3022-2015 Standard	COMPLIES WITH Rolls-Royce RRES 90061 Specification	COMPLIES WITH Airbus AITM-1001 Testing Method	COMPLIES WITH Fract & Whitney Requirements	COMPLIES WITH The Boeing Co Requirements	COMPLIES WITH ISO 3059-12 Standard	COMPLIES WITH USAF Requirements	
<b>GX SERIES – OVERHEAD LIGHT</b>										
<b>GX Orion</b> REMOTE	X	1 500-7 000	X	-	-	-	-	X	-	
<b>GX Orion</b> UV & WH	X	≈ 7 000	X	-	-	X	-	X	-	
<b>GX Orion</b> UV	-	≈ 4 500	X	X	X	X	X	X	X	
<b>BB SERIES – HANDHELD LIGHT</b>										
<b>BB Helios</b>	-	≈ 8 500	X	-	-	X	-	X	X	
<b>BB Ikaros</b>	-	≈ 4 000	X	X	X	X	X	X	X	
<b>MB SERIES – HANDHELD LIGHT</b>										
<b>MB Hercules Ex</b>	-	≈ 4 000	X	X	X	X	X	X	X	
<b>MB Zeus</b>	X	≈ 4 000	X	X	X	X	-	X	-	
<b>MB Zeus</b> with Athena	X	≈ 4 000	X	X	X	X	-	X	-	
<b>MB Hermes</b>	-	≈ 4 000	X	X	X	X	X	X	X	
<b>MB Hermes</b> with Athena	-	≈ 4 000	X	X	X	X	X	X	X	
<b>MB Iris</b>	-	≈ 4 000	X	X	X	X	X	X	X	
<b>MB Poseidon</b>	-	Blue Light (440 nm)	-	-	-	-	-	-	-	
<b>UVG SERIES – FLASHLIGHT / HEADLIGHT</b>										
<b>UVG<sub>3</sub></b> Spotlight	-	≈ 25 000	-	-	-	-	-	X	-	
<b>UVG<sub>3</sub></b> Midlight	-	≈ 8 000	X	-	-	X	-	X	X	
<b>UVG<sub>3</sub></b> Floodlight	-	≈ 3 000	X	-	X	X	X	X	X	
<b>UVG<sub>5</sub></b> Spotlight	-	≈ 25 000	-	-	-	-	-	X	-	
<b>UVG<sub>5</sub></b> Midlight	-	≈ 8 000	X	-	-	X	-	X	X	
<b>UVG<sub>5</sub></b> Floodlight	-	≈ 3 000	X	-	X	X	X	X	X	

PLEASE NOTE: The above models are in compliance with the above ASTM and ISO standards as well as industry specifications as indicated on the table above irrespective of the power source (Battery or Mains).



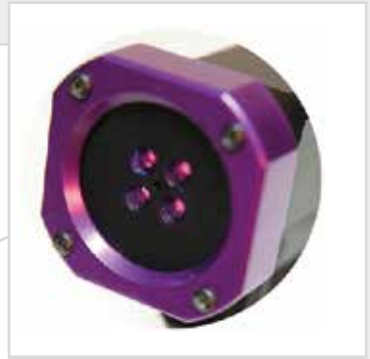
# MB Hercules Ex

Explosion proof handheld UV inspection light to safeguard your human resources and physical assets.



**ON/OFF SWITCH**

On/Off switch at the back prevents accidental activation.



**FOUR UV LEDs WITH WHITE LIGHT BLOCK FILTERS**

Four high quality UV LEDs with respective high quality white light block filters that do not suffer from solarization.



**BATTERY POWERED**

MB Hercules Ex is powered with two rechargeable batteries for ease of use in field inspections and tight work spaces.



**CHARGE BATTERIES WITHOUT REMOVING FROM THE LAMP**

A charger with an internal connector can be used to charge batteries without removing them from the lamp. Charger must not be used in explosive atmospheres.





**MB Hercules Ex** is an extremely durable product specifically developed for use in areas where the risk of an explosion is high. Use of explosion proof products is often required in Offshore Oil Rigs, Refineries, Aerospace, and Defense. It has successfully completed extremely tough tests, amongst them tests for thermal conditioning, Impact Tests, Drop Tests, IP tests that led to the ATEX certification (Certificate: ITS17ATEX402144X). This unique product is suitable for use in extreme weather conditions varying from 104° Fahrenheit (+ 40° Celsius) to minus 4° Fahrenheit (- 20° Celsius).

Furthermore, Hercules Ex has successfully completed all tests and audits leading to its certification for IECEx, NFPA 70 Article 500 for Class I (divisions II locations) and the United States military tests, Salt Fog Test and Explosive Atmosphere Test. It has an ingress protection marking of IP66.

This unique light is battery powered, it has four UV LEDs and has an intensity of 4,000 µw/cm<sup>2</sup>. A charger is supplied with each lamp enabling users to charge the batteries without removing them from the lamp. Charging of batteries should only take place outside explosive atmospheres.

This unique product complies with ASTM E3022-15, Rolls-Royce RRES 90061 and Airbus AITM6-1001. A certificate of conformity is provided with every light as well as a 12 month warranty.

**FACTS ABOUT MB HERCULES EX**

Output Characteristics	MB Hercules Ex
Intensity	≈ 4 000 µw/cm <sup>2</sup>
Visible light	<1 Lux / 0.09 fc
Beam > 1 200 µw/cm <sup>2</sup>	Ø 190 mm (7.5 ")

At a distance of 38 cm (15 inches)

**TECHNICAL DATA**

	MB Hercules Ex
UV LED:	4
Wavelength:	365 nm (peak) +/- 5 nm
Estimated LED life time:	30 000 hours
UV-B:	100% free from UV-B
Filter:	White light block filter
Power supply:	Battery
Weight:	888 grams (2.0 lbs)
Battery running time:	3 hours (+/- 5%)



**EXPLOSIVE ATMOSPHERE CERTIFICATIONS**

ATEX certified for Group II, Zone II (Certificate: ITS17AT-EX402144X), IECEx, NFPA 70 Article 500 for Class I (divisions II locations), Explosive Atmosphere Test as per MIL-STD-810G.



**OPERATE THE LAMP AS MAINS WHILE CHARGING BATTERIES**

A separate PSU supplied can charge the batteries. This charger can only be used outside explosive atmospheres.



**PACKAGE INCLUDES:**

Lamp, Car Charger, Four Batteries, UV Block Goggles, External Charger for wall outlet, Carrying Case, Charging Power Supply.

# MB Zeus and MB Hermes MB Iris and MB Poseidon



Certified with an ingress protection marking of IP68 Waterproof, this light and compact lamp has been designed for heavy industries with a very difficult operating environment.



**FOUR UV LEDs WITH WHITE LIGHT BLOCK FILTERS**

Four high quality UV LEDs with respective high quality white light block filters that do not suffer from solarization.



**ON/OFF SWITCH**

On/Off switch at the back prevents accidental activation.



**BATTERY INDICATOR**

Four colors: green, yellow, orange and red – signal the user when the batteries are over 75%, 50-75%, 25-50% and below 25% charged respectively. With less than 10% left the red signal starts flashing.



**OPERATE THE LAMP AS MAINS WHILE CHARGING BATTERIES**

The battery version can operate like mains while charging the batteries via a connector at the back of the head.



**MB MAINS ON A FLEXIBLE ARM**

The mains version can be mounted on a flexible arm. The flexible arm can be supplied by Labino.



**BATTERY OR MAINS POWERED**

Powered with your choice of either two rechargeable batteries for ease of use in field inspections and tight work spaces or via Mains. The cable length is customizable. The mains version has a squared pin hole that can mount on a flexible arm.



**MB Series products Zeus, Hermes and Iris** are lights with UV output. They are compact and weigh less than many comparable products but are extremely robust in nature, designed for heavy industries with very difficult operating environments. The mains operated model weighs just 732 grams (1.6 lbs) and the battery operated model weighs just 781 grams (1.7 lbs). The Iris weigh 568 grams (1.3 lbs). MB Poseidon is a light with blue output.

The MB Series family of products has been specifically designed to meet the ASTM E3022-15 and ISO 3059-12 standards as well requirements set by the PRIMES. The optics used in the MB Series meet the Rolls-Royce RRES 90061 specification. The beam profile of the UV light is extremely homogenous without any footprints showing from the LEDs, shades, dark spots or other disturbing defects.

**MB Zeus**

MB Zeus has been tested to comply with both ASTM E3022-15 and ISO 3059-12 standards as well as the Airbus AITM6-1001. It generates an intensity of approximately 4 000 µw/cm<sup>2</sup> at 38 cm (15 inches) and is equipped with a white light LED for after inspection. The running time of the battery version is 2 hours.

**FACTS ABOUT MB ZEUS**

Output Characteristics	MB Zeus
Intensity	≈ 4 000 µw/cm <sup>2</sup>
Visible light	<1 Lux / 0.09 fc
Beam > 1 200 µw/cm <sup>2</sup>	Ø 200 mm (7.9 ")

At a distance of 38 cm (15 inches)

**MB Hermes**

MB Hermes has been tested to comply with both ASTM E3022-15 and ISO 3059-12 standards as well as with the internal requirements of all PRIMES mentioned on page 7 including Rolls-Royce RRES 90061 and Airbus AITM6-1001. It generates an intensity of approximately 4 000 µw/cm<sup>2</sup> at 38 cm (15 inches) and it does not have a white light LED. The running time of the battery version is 3 hours.

**FACTS ABOUT MB HERMES**

Output Characteristics	MB Hermes
Intensity	≈ 4 000 µw/cm <sup>2</sup>
Visible light	<1 Lux / 0.09 fc
Beam > 1 200 µw/cm <sup>2</sup>	Ø 200 mm (7.9 ")

At a distance of 38 cm (15 inches)



**MB BATTERY MODELS WITH SPRAY CAN HOLDER ATHENA**

An innovative accessory that can be mounted on any Zeus or Hermes battery model and allows the NDT Inspector to operate the spray can simultaneously with a strong UV light that is in compliance with ASTM E3022 and the PRIMES requirements listed on page 7.



**MB IRIS FITS EVERYWHERE**

Iris does not have a handle and therefore can be easily mounted on camera equipment designed to fit in tight spaces. It is particularly in use by aerospace companies as it is in compliance with ASTM E3022 and the PRIMES requirements listed on page 7.



**BATTERY VERSION PACKAGE INCLUDES:**

Lamp, Car Charger, Four Batteries, UV Block Goggles, External Charger for wall outlet, Carrying Case, Power supply for charging batteries while operating.



**MAINS VERSION PACKAGE INCLUDES:**

Lamp with 2.5 meter (8 feet) cord, Power Supply Unit 100-240V AC, AC power cord, UV Block Goggles, Carrying Case. The cord can be customized to the length of your choice.

**MB Iris**

MB Iris is an extremely compact light. It is used together with automated systems that incorporate cameras to inspect hard to reach areas such as pipes interior. Iris has been tested to comply with both ASTM E3022-15 and ISO 3059-12 standards as well as with the internal requirements of all PRIMES mentioned on page 7, including Rolls-Royce RRES 90061 and Airbus AITM6-1001. It generates an intensity of approximately 4 000 μw/cm<sup>2</sup> at 38 cm (15 inches). Iris comes only as mains and it is supplied with a mounting bracket.

**FACTS ABOUT MB IRIS**

Output Characteristics	MB Iris
Intensity	≈ 4 000 μw/cm <sup>2</sup>
Visible light	<1 Lux / 0.09 fc
Beam > 1 200 μw/cm <sup>2</sup>	Ø 200 mm (7.9 ")

At a distance of 38 cm (15 inches)

**MB Poseidon**

MB Poseidon is an actinic blue light LED lamp offering a peak wavelength of 440 nm +/- 5 nm. Blue light method is suitable for detection of defects where ambient light is present. To ensure adequate contrast, inspection shall be carried out with the yellow contrast goggles supplied. MB Poseidon is designed in to be in compliance with SIS-CEN/TR 16638:2014.

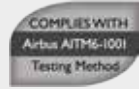
**TECHNICAL DATA**

	MB Zeus, MB Hermes and MB Iris
UV LED:	4
Wavelength:	365 nm (peak) +/- 5 nm
Estimated LED life time:	30 000 hours
UV-B:	100% free from UV-B
Filter:	White light block filter
Power supply:	Battery and Mains
Weight Battery:	781 grams (1.7 lbs)
Weight Mains:	732 grams (1.6 lbs)
Weight MB Iris:	568 grams (1.3 lbs)

Accessories for MB Series

	MB Zeus, Hermes, Iris and Poseidon
UV Block Visor	
UV Block Goggles XC	
Flexible Arm	
Friction Arm	
Rubber Bumper	
Protection PSU Bracket	
Magnet for PSU	
Customized Carrying Case	
Thumb Screws for Battery Lid	

# BB Helios and BB Ikaros



Powerful handheld UV light that produces a large beam, useful for covering large areas, widely used either in the field, on an MPI bench or a penetrant line.



**NINE UV LEDS WITH WHITE LIGHT BLOCK FILTERS**

Nine high quality UV LEDs with respective high quality white light block filters that do not suffer from solarization.



**POWERED VIA BATTERY AND MAINS (DUO) OR JUST MAINS**

Powered with your choice of either battery and mains or just mains. The battery version (referred to as DUO) can also be used as mains and operate the lamp while charging the battery.



**BB BATTERY (DUO) OR MAINS ON A FLEXIBLE ARM**

All BB Series models can be mounted on a flexible arm with the help of a handle adaptor. The flexible arm can be supplied by Labino.



**ON/OFF SWITCH**

On/Off switch at the back prevents accidental activation.



**BB MAINS WITH CABLE WINDER**

The mains version can be mounted on a cable winder with a 9.5 meter (31 feet) cable.



**BATTERY VERSION PACKAGE INCLUDES:**

Lamp, UV Block Goggles, Power supply for charging batteries while operating.



**MAINS VERSION PACKAGE INCLUDES:**

Lamp with 2 meter (6.6 feet) cord, Power Supply Unit 100-240V AC, AC power cord, UV Block Goggles.

**BB Series products Helios and Ikaros** are lights with a powerful and wide UV output. They provide large coverage and weigh less than many comparable products. The mains operated model weighs just 1.2 kg (2.6 lbs) and the battery operated model weighs just 1.7 kg (3.7 lbs). They are widely used for field inspections or on an MPI bench. BB Series lamps have an ingress protection marking of IP65.

The BB Series family of products has been specifically designed to meet the ASTM E3022-15 and ISO 3059-12 standards as well requirements set by the PRIMES. The optics used in the BB Series meet the Rolls-Royce RRES 90061 specification. The beam profile of the UV light is extremely homogenous without any footprints showing from the LEDs, shades, dark spots or other disturbing defects.

**BB Helios**

BB Helios has been tested to comply with both ASTM E3022-15 and ISO 3059-12 standards. It generates an intensity of approximately 8 500  $\mu\text{w}/\text{cm}^2$  at 38 cm (15 inches). The running time of the battery version is 3.5 hours.

**FACTS ABOUT BB HELIOS**

Output Characteristics	BB Helios
Intensity	$\approx 8\ 500\ \mu\text{w}/\text{cm}^2$
Visible light	$<1\ \text{Lux} / 0.09\ \text{fc}$
Beam $> 1\ 200\ \mu\text{w}/\text{cm}^2$	$\varnothing\ 275\ \text{mm}\ (10.8\ \text{''})$

At a distance of 38 cm (15 inches)

**BB Ikaros**

BB Ikaros has been tested to comply with both ASTM E3022-15 and ISO 3059-12 standards as well as with the internal requirements of all PRIMES described on page 7, including Rolls-Royce RRES 90061 and Airbus AITM6-1001. It generates an intensity of approximately 4 000  $\mu\text{W}/\text{cm}^2$  at 38 cm (15 inches) and it does not have a white light LED. The running time of the battery version is 3,5 hours.

**FACTS ABOUT BB IKAROS**

Output Characteristics	BB Ikaros
Intensity	$\approx 4\ 000\ \mu\text{W}/\text{cm}^2$
Visible light	$< 1\ \text{Lux} / 0.09\ \text{fc}$
Beam $> 1\ 200\ \mu\text{W}/\text{cm}^2$	$\varnothing\ 250\ \text{mm}\ (9.8\ \text{''})$

At a distance of 38 cm (15 inches)

**TECHNICAL DATA**

	BB Helios and Ikaros
UV LED:	9
Wavelength:	365 nm (peak) +/- 5 nm
Estimated LED life time:	30 000 hours
UV-B:	100% free from UV-B
Filter:	White light block filter
Power supply:	Battery and mains (DUO) or just mains
Weight DUO:	1.7 kg (3.7 lbs)
Weight Mains:	1.2 kg (2.6 lbs)
MB Helios Battery running time:	3,5 hours (+/- 5%)
MB Ikaros Battery running time:	3,5 hours (+/- 5%)

Accessories for BB Series

	BB Helios and Ikaros
UV Block Visor	
UV Block Goggles XC	
Cable winder	
Handle adaptor	
Flexible Arm	
Friction Arm	
Mounting Yoke and brackets for stationary mounting	
Protection PSU Bracket	
Magnet for PSU	
Protection clear glass filter	
Customized Carrying Case	



# GX Orion

Modular overhead UV system that allows you to design the desired covered area by mounting together multiple units. GX Orion is the only overhead UV system on the market that is certified with an ingress protection marking of IP68 Waterproof, making it an extremely useful tool for inspection areas with excessive liquids.



**OPERATE VIA A FOOT PEDAL OR A POWER BUTTON**

Can be used as an on/off switch for the UV light to activate the last used intensity and the last recorded timer setting.

**WITH A PLC INTERFACE**

Orion comes with a PLC interface which can be used to monitor the UV light from a computerized panel.



**WITH UV ON/OFF BUTTON ONLY**

Orion comes with a UV only option as well.



**WITH UV AND WHITE LIGHT ON/OFF BUTTON ONLY**

Orion comes with a UV and white light only option as well.



**REMOTE CONTROLLED**

A remote control allows you to switch on/off the UV and White Light, change the intensity and set up the timer from a distance.



**GLASS SURFACE WITH 10 UV LEDs AND 1 WHITE LIGHT**

Glass surface prevents damage on sensitive components such as filters and LEDs.





Labino's LED overhead inspection lamp, GX Orion, is a modular system that can be used to cover large areas. GX Orion is the only overhead UV system on the market that is certified with an ingress protection marking of IP68 Waterproof, making it an extremely useful tool for inspection areas with excessive liquids. There are three different models to choose from, remote controlled with multiple UV intensities, UV on/off button only, and UV and visible light on/off buttons only.

The GX Series family of products has been specifically designed to meet the ASTM E3022-15 and ISO 3059-12 standards as well requirements set by the PRIMES. The optics used in the GX Series meet the Rolls-Royce RRES 90061 specification. The beam profile of the UV light is extremely homogenous without any footprints showing from the LEDs, shades, dark spots or other disturbing defects.

All GX Orion models have a built-in PLC interface designed to connect to your PLC system. You can chose a "mother" or a "slave" GX Orion unit, with or without remote panel, with or without on/off power switches and still be able to monitor the unit completely through your computer via the PLC interface.

**GX Orion REMOTE**

GX Orion REMOTE has been tested to comply with both ASTM E3022-15 and ISO 3059-12 standards. It generates an intensity that can be adjusted to vary from approximately 1 500 to 7 000  $\mu\text{w}/\text{cm}^2$  at 38 cm (15 inches). It has a powerful white light that can generate 1 000 lux (93 fc) at 30 cm (12 inches). A remote control allows you to switch on/off the UV and White Light, change the intensity and set up the timer from up to 5 meters (16 feet) away.

**FACTS ABOUT GX ORION REMOTE**

Output Characteristics	GX Orion REMOTE
Intensity	$\approx 1\,500 - 7\,000 \mu\text{w}/\text{cm}^2$
Visible light	$< 1 \text{ Lux} / 0.09 \text{ fc}$
Beam $> 1\,200 \mu\text{w}/\text{cm}^2$	330 mm x 230 mm

At a distance of 38 cm (15 inches)



**THREE GX ORION REMOTE MOUNTED TOGETHER ON THE SHORT SIDE**

Multiple GX Orion REMOTE "slave" units can be mounted on a "mother" unit either on the long side or the short side.



**THREE GX ORION REMOTE MOUNTED TOGETHER ON THE LONG SIDE**

Multiple GX Orion REMOTE "slave" units can be mounted on a "mother" unit either on the long side or the short side.



**THREE GX ORION UV MOUNTED TOGETHER ON THE SHORT SIDE**

Multiple GX Orion UV "slave" units can be mounted on a "mother" unit either on the long side or the short side.



**THREE GX ORION UV & WH MOUNTED TOGETHER ON THE SHORT SIDE**

Multiple GX Orion UV & WH "slave" units can be mounted on a "mother" unit either on the long side or the short side.

**GX Orion<sup>UV & WH</sup>**

GX Orion<sup>UV & WH</sup> has been tested to comply with both ASTM E3022-15 and ISO 3059-12 standards. It generates an intensity of approximately 7 000  $\mu\text{W}/\text{cm}^2$  at 38 cm (15 inches). It has a powerful white light that can generate 1 000 lux (93 fc). This model does not have a remote, it comes with one UV and one white light ON/OFF button.

**FACTS ABOUT GX ORION<sup>UV & WH</sup>**

Output Characteristics	GX Orion <sup>UV &amp; WH</sup>
Intensity	$\approx 7\,000\ \mu\text{W}/\text{cm}^2$
Visible light	<1 Lux / 0.09 fc
Beam > 1 200 $\mu\text{W}/\text{cm}^2$	330 mm x 230 mm

At a distance of 38 cm (15 inches)

**GX Orion<sup>UV</sup>**

GX Orion<sup>UV</sup> has been tested to comply with both ASTM E3022-15 and ISO 3059-12 standards as well as with the internal requirements of all PRIMES mentioned on page 7, including Rolls-Royce RRES 90061 and Airbus AITM6-1001. It generates an intensity of approximately 4 500  $\mu\text{W}/\text{cm}^2$  at 38 cm (15 inches). This model does not have a remote, it comes with one UV ON/OFF button.

**FACTS ABOUT GX ORION<sup>UV</sup>**

Output Characteristics	GX Orion <sup>UV</sup>
Intensity	$\approx 4\,500\ \mu\text{W}/\text{cm}^2$
Visible light	<1 Lux / 0.09 fc
Beam > 1 200 $\mu\text{W}/\text{cm}^2$	260 mm x 180 mm

At a distance of 38 cm (15 inches)

**TECHNICAL DATA**

	GX Orion
UV LED:	10
Wavelength:	365 nm (peak) +/- 5 nm
Estimated LED life time:	30 000 hours
UV-B:	100% free from UV-B
Filter:	White light block filter
Power supply:	Mains
Weight:	2.6 kg (5.8 lbs)



**GX ORION "MOTHER" PACKAGE INCLUDES:**

GX Orion lamp of your choice, 4 Stainless steel bars for mounting, 4 chains with snap links, Power Supply Unit, cable between PSU and GX unit, cable between PSU and wall socket.



**GX ORION "SLAVE" PACKAGE INCLUDES:**

GX Orion lamp with UV & WH or only UV LEDs, 2 stainless steel bars and 1 cable connection for assembly short side to short side, 2 stainless steel brackets and 1 cable connection for assembly long side to long side, 4 chains with snap links.

Accessories for GX Series

	GX Orion
UV Block Visor	
UV Block Goggles XC	
Foot Pedal	
Power Button	

# Labino<sup>®</sup> Torch Light <sup>UVG2</sup>



Small (16 cm) and Light (211 grams)

365 nm | >25 000  $\mu\text{W}/\text{cm}^2$  | Spotlight  
365 nm | >10 000  $\mu\text{W}/\text{cm}^2$  | Midlight  
365 nm | >2 500  $\mu\text{W}/\text{cm}^2$  | Floodlight

MAKES IT BRIGHT

- The Labino<sup>®</sup> Torch Light<sup>UVG2</sup> is a small-sized, lightweight, UV-A LED flashlight designed for quick inspections in “hard-to-reach” spots.
- The lamp measures 15.9 cm long (6.3 inches) and weighs 211 gram (7.4 oz), battery included.
- The Labino<sup>®</sup> Torch Light<sup>UVG2</sup> produces a variety of ultraviolet beams ranging from 25 000  $\mu\text{W}/\text{cm}^2$  to 2 500  $\mu\text{W}/\text{cm}^2$  at a distance of 38 cm (15 inches), depending on your choice of Spotlight, Midlight or Floodlight beam.
- The Labino<sup>®</sup> Torch Light<sup>UVG2</sup> contains one (1) ultraviolet light emitting diode (LED). The LED creates UV light that peaks at 365 nm making it suitable for industrial, leakage and security applications.
- Full power is reached instantly. The on/off button is positioned in the back of the lamp to prevent accidental activation.
- At full charge the battery provides up to 3 hours of use. Recharge from a normal outlet or vehicle with included chargers. Each kit also includes an extra battery.
- **DESIGN YOUR OWN DOUBLE KIT:** You can design your own double kit with two UVG torches by including your choice of two UVG2 torches or 1 UVG2 and 1 UVG3 or 1 UVG2 and one white light.



UVG SINGLE KIT

UVG DOUBLE KIT



## TECHNICAL SPECIFICATIONS:-

### Light Beam

- Spotlight**  $\approx > 25\,000\ \mu\text{W}/\text{cm}^2$  at 38 cm (15 inches)  
Ø 30 mm (total area with a minimum intensity of  $1200\ \mu\text{W}/\text{cm}^2$  at 38 cm)  
Visible light:  $< 8\ \text{Lux} / 1.86\ \text{fc}$
- Midlight**  $\approx > 10\,000\ \mu\text{W}/\text{cm}^2$  at 38 cm (15 inches)  
Ø 100 mm (total area with a minimum intensity of  $1200\ \mu\text{W}/\text{cm}^2$  at 38 cm)  
Visible light:  $< 5\ \text{Lux} / 0.46\ \text{fc}$
- Floodlight**  $\approx > 2\,500\ \mu\text{W}/\text{cm}^2$  at 38 cm (15 inches)  
Ø 130 mm (total area with a minimum intensity of  $1200\ \mu\text{W}/\text{cm}^2$  at 38 cm)  
Visible light:  $< 2\ \text{Lux} / 0.18\ \text{fc}$

### LED

- 1 UV LED
- Wave length (peak): 365 nm

### Battery

- 2200 mAh Lithium-Ion, 3.7 volts
- Running time: approx. 3.0 hrs
- Charging time: approx. 8.0 hrs
- Requires (1) batteries to operate
- Equipped with a current regulator to keep the intensity stable when the battery fades

### Charger

- One 100-240 VAC charger for use from electrical outlet
- One (1) 12 V charger for use in vehicle via cigarette lighter
- Capacity: two batteries can be charged simultaneously connection

### Dimensions

- Length: 15.9 cm (6.3 inches)
- Weight excluding battery: 166 gr (5.8 oz)
- Weight including battery: 211 gr (7.4 oz)

### The Labino Single Torch Light Kit

- 1 UV LED flashlight
- Charger for use from electrical outlet
- Charger for use in vehicle via cigarette lighter connection
- Two (2) batteries (1+1 extra)
- Belt holster
- UV Block glasses (optional)
- Carrying case (optional)

### Certificates

- IP65 approved for dust and temporary water jet
- All components included in the Labino Torch Light lamp comply with RoHS

ADVANCED NDT LTD

[www.advanced-ndt.co.uk](http://www.advanced-ndt.co.uk)

### Advanced NDT Limited

Orchard House, Orchard Close  
Severn Stoke, Worcester, WR8 9JJ, England

Tel: 01905 371460 Fax: 01905 371477

Web: [www.advanced-ndt.co.uk](http://www.advanced-ndt.co.uk)

Email: [sales@advanced-ndt.co.uk](mailto:sales@advanced-ndt.co.uk)

[www.labino.com](http://www.labino.com)



## 365 nm | Hands Free | Spotlight or Midlight

- The Labino® UVG4-HEAD Spotlight is a small-sized, lightweight, UV-A LED Head Lamp designed to release the user's hands during inspection.
- The lamp can be adjusted in three different angles, the operator can switch angle of the light during inspection. The rubber bands are adjustable and designed to fit helmets, or to be attached directly on the head. The battery is located in the back of the structure and therefore there are no loose cables hanging from the lamp.
- The Labino® UVG4-HEAD contains one (1) ultraviolet light emitting diode (LED). The LED creates UV light that peaks at 365 nm making it suitable for industrial, leakage and security applications.
- Full power is reached instantly. The on/off button is positioned in the back of the lamp to prevent accidental activation.

## MAKES IT BRIGHT

- At full charge the battery provides up to 3 hours of use. Recharge from a normal outlet or vehicle with included chargers. The kit also includes an extra rechargeable battery.



## TECHNICAL SPECIFICATION

### UV LED

- UV source: UV A LED (1)
- Intensity:
  - Spotlight: >35 000  $\mu\text{w}/\text{cm}^2$  at 15 cm  
>25 000  $\mu\text{w}/\text{cm}^2$  at 38 cm  
>14 000  $\mu\text{w}/\text{cm}^2$  at 60 cm  
>8 000  $\mu\text{w}/\text{cm}^2$  at 100 cm
  - Midlight: >32 000  $\mu\text{w}/\text{cm}^2$  at 15 cm  
>10 000  $\mu\text{w}/\text{cm}^2$  at 38 cm  
>4 500  $\mu\text{w}/\text{cm}^2$  at 60 cm  
>1 800  $\mu\text{w}/\text{cm}^2$  at 100 cm
- Visible light:
  - Spotlight: < 7 Lux (<0.65 fc)
  - Midlight: < 5 Lux (< 0.46 fc)
- Wave length: 365 nm
- Irradiated diameter at a distance of 38 cm):
  - Spotlight: 30 mm (1.2 inches)
  - Midlight: 100 mm (3.9 inches)

### Battery

- 2200 mAh Lithium-Ion, 3.7 volts
- Equipped with a current regulator to keep the intensity stable when the battery fades
- Running time: approx. 3 hrs
- Charging time: approx. 8 hrs
- Requires one (1) battery to operate



### Charger

- One (1) 100-240 VAC charger for use from electrical outlet
- One (1) 12 V charger for use in vehicle via cigarette lighter connection
- Capacity: two batteries can be charged simultaneously

### The Labino® UVG4-HEAD Kit

- UVG4-HEAD Lamp
- Charger for use from electrical outlet
- Charger for use in vehicle via cigarette lighter connection
- Two (2) batteries (1+1 extra)

### Certificate

- All components included in the Labino Torch Light lamp are RoHS certified according to 2002/95/EG
- CE marked
- IP65 classified, dust and temporary water jetting proof

### ADVANCED NDT LTD

[www.advanced-ndt.co.uk](http://www.advanced-ndt.co.uk)

### Advanced NDT Limited

Orchard House, Orchard Close  
Severn Stoke, Worcester, WR8 9JJ, England  
Tel: 01905 371460 Fax: 01905 371477  
Web: [www.advanced-ndt.co.uk](http://www.advanced-ndt.co.uk)  
Email: [sales@advanced-ndt.co.uk](mailto:sales@advanced-ndt.co.uk)

### Dimensions

- Weight inc. battery: 271 gr (9.4 oz)

Labino AB shall not be held liable for any errors or omissions resulting from the test procedures that were used in validating performance of any Labino AB product nor for unforeseen errors or omissions in digital or printed material.



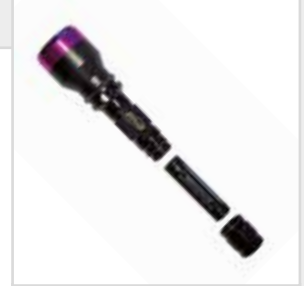
# UVG3 and UVG5

Small, light and powerful, UVG3 torch is inspectors' most convenient tool for quick inspections. UVG5, a compact, light and adjustable headlight frees your hands during inspections.



**ONE UV LED WITH WHITE LIGHT BLOCK FILTER**

A high quality UV LED with respective high quality white light block filter that does not suffer from solarization.



**BATTERY POWERED**

Powered by a battery that can be recharged either by a cigarette outlet in a vehicle or a wall outlet. Both chargers are supplied with each unit.



**BELT HOLSTER**

Each UVG3 torch is supplied with a belt holster.

**ADJUSTABLE RUBBER BAND**

Adjustable rubber bands fit directly on the head and/or helmets.



**ADJUSTABLE LIGHT**

The lamp can be adjusted to three different angles.



**ON/OFF SWITCH**

On/Off switch is positioned at the back to prevent accidental activation.



**TORCH ON TRIPOD**

UVG3 torches can be mounted on a Labino tripod.



**UVG3 TORCH PACKAGE INCLUDES:**

Lamp, Car Charger, Two Batteries, External Charger for wall outlet, belt holster, wrist band.



**UVG3 KIT (SINGLE) PACKAGE INCLUDES:**

Lamp, Car Charger, Two Batteries, UV Block Goggles, External Charger for wall outlet, carrying case, belt holster, wrist band.

**UVG Series products UVG3 and UVG5** are small and compact lights with a powerful output that offer convenience during quick inspections. UVG3 torch weighs just 211 grams (7.4 oz) and the UVG5 headlight weighs just 271 grams (9.4 oz). The UVG Series family of products has been specifically designed to meet the ASTM E3022-15 and ISO 3059-12 standards as well as requirements set by the PRIMES.

**UVG3**

UVG3 midlight and floodlight have been tested to comply with both ASTM E3022-15 and ISO 3059-12 standards. The UVG3 floodlight also complies with Airbus AITM6-1001. The midlight and floodlight generate an intensity of approximately 8 000 µw/cm<sup>2</sup> and 3 000 µw/cm<sup>2</sup> respectively at 38 cm (15 inches). The running time is 4.5 hours.

**Design your own single or double UVG torch kit**

UVG torch series is available with just the lamp or as a kit. Kits include a carrying case and UV goggles. Design your own kit with one or two torches of any kind.

**FACTS ABOUT UVG3**

Output Characteristics	UVG3 Midlight	UVG3 Floodlight
Intensity	≈ 8 000 µw/cm <sup>2</sup>	≈ 3 000 µw/cm <sup>2</sup>
Visible light	<1 Lux / 0.09 fc	<1 Lux / 0.09 fc
Beam > 1 200 µw/cm <sup>2</sup>	Ø 100 mm (3.9")	Ø 130 mm (5.1")

At a distance of 38 cm (15 inches)

**TECHNICAL DATA**

UVG3 and UVG5	
UV LED:	1
Wavelength:	365 nm (peak) +/- 5 nm
Estimated LED life time:	30 000 hours
UV-B:	100% free from UV-B
Filter:	White light block filter
Power supply:	Battery
Weight UVG3:	211 grams (7.4 oz)
Weight UVG5:	271 grams (9.4 oz)
UVG3 Battery running time:	4.5 hours (+/- 5%)
UVG5 Battery running time:	4.5 hours (+/- 5%)



**UVG5**

UVG5 midlight and floodlight have been tested to comply with both ASTM E3022-15 and ISO 3059-12 standards. The UVG5 floodlight also complies with Airbus AITM6-1001. The midlight and floodlight generate an intensity of approximately 8 000  $\mu\text{W}/\text{cm}^2$  and 3 000  $\mu\text{W}/\text{cm}^2$  respectively at 38 cm (15 inches). The running time is 4.5 hours.





**FACTS ABOUT UVG5**

Output Characteristics	UVG5 Midlight	UVG5 Floodlight
Intensity	$\approx 8\ 000\ \mu\text{W}/\text{cm}^2$	$\approx 3\ 000\ \mu\text{W}/\text{cm}^2$
Visible light	<1 Lux / 0.09 fc	<1 Lux / 0.09 fc
Beam > 1 200 $\mu\text{W}/\text{cm}^2$	$\varnothing 100\ \text{mm}\ (3.9\ \text{''})$	$\varnothing 130\ \text{mm}\ (5.1\ \text{''})$

At a distance of 38 cm (15 inches)

Accessories for UVG Series

**UVG3 and UVG5**

UV Block Visor	
UV Block Goggles XC	
Tripod	
Customized Carrying Case	



**UVG3 KIT (DOUBLE) PACKAGE INCLUDES:**

Two lamps, Car Charger, Three Batteries, UV Block Goggles, External Charger for wall outlet, carrying case, two belt holsters, two wrist bands.



**UVG5 HEADLIGHT PACKAGE INCLUDES:**

Lamp, Car Charger, Two Batteries, External Charger for wall outlet.



# Apollo 1.0

Radiometer/photometer measuring UV and visible light via a wireless sensor, traceable to NIST.



**WIRELESS SENSOR**

Measures up to a distance of 5 feet (16 meters) from the Reader unit.



**BATTERY POWERED**

Reader unit powered by three "AA" batteries that last 100 hours of active measurement. Sensor unit powered by one "1/2 AA" lithium battery that lasts 600 hours of active measurement.



**RED LCD SCREEN**

Red LCD screen for easy readings in a dark environment and a peak function to identify the highest reading.



**An instrument for accurate measurement** of UV-A irradiation and visible illumination. Extra engineering effort is taken to make an accurate measurement of visible light emission from a UV-A lamp by incorporating a superior band pass filter containing only non-fluorescent filters. The instrument provides fast measurement as it offers auto ranging and concurrent measuring of visible light and UV-A irradiation. It is ergonomic and easy to use due to its light weight chassis, wireless sensor unit and compact size. Apollo 1.0 is traceable to NIST (USA's National Institute of Standards and Technology).

Sensor measurements and transmission of data is done via Bluetooth. The wireless sensor enables the user to measure from a distance of up to five meters. This feature ensures that the sensor unit is stable and no movement occurs from connecting cables during measurement. Each sensor unit has both the UV and White light sensors incorporated on it.

Apollo 1.0 comes as a single kit or as a double kit. The single kit includes one reader unit and one wireless sensor unit. A double kit includes one reader unit and two wireless sensor units. As only the sensor needs to be send for calibration, the double kit is a convenient tool so that operations are never disrupted. Please note that Aerospace companies that are audited by Nadcap must send in both the reader and the sensor when calibrating.

The meter features hold and peak functions. The Hold function stores the present value measured and the Peak button stores the highest value measured.

**SPECTRAL SPECIFICATION APOLLO 1.0**

<b>UV Light Sensor</b>	
<b>Spectral Range:</b>	300 nm to 400 nm
<b>Sensitivity Region (FWHM):</b>	325 nm to 395 nm
<b>Operation Range:</b>	0 to 50,000 $\mu\text{W}/\text{cm}^2$
<b>Accuracy:</b>	UV Light: +/- 4 %
<b>White Light Sensor</b>	
<b>Spectral Range:</b>	400 nm to 700 nm
<b>Sensitivity Region (FWHM):</b>	485 nm to 600 nm
<b>Operation Range:</b>	0 to 10 000 Lux (1 000 fc)
<b>Accuracy:</b>	Visible Light: +/- 3 %



**APOLLO 1.0 SINGLE KIT PACKAGE INCLUDES:**  
 Reader unit, Sensor unit, Calibration certificate, Carrying case.



**APOLLO 1.0 DOUBLE KIT PACKAGE INCLUDES:**  
 Reader unit, two sensor units, Calibration certificate, Carrying case.



## NDT Industries

We find solutions to your specific needs:



WIND POWER



MINING



SPACE



NUCLEAR



REFINERY



INFRASTRUCTURE

# Labino MPXL Lamps

These highly durable products with an easy to operate design offer more UV intensity and less weight, making your job easier and more efficient.

**Labino MPXL lamps** are available with a variety of features to give operators of black lights the opportunity to choose what best suits their needs. The choice of a model depends on the conditions under which an operator is using these lamps. Does an inspection need to cover small areas or large areas? Does it involve difficult structures and therefore a lighter lamp is required? Do they simply need more power or less power can suffice? We can accommodate all needs. Simply choose among the available features below.

Labino MPXL lights utilize 50 W and 35 W lamps. Depending on the model, choose between battery operated or mains operated or choose both (SuperXenon). Labino's new model, the SuperXenon, can carry a powerful 50 W lamp generating very high intensity and the docking battery can be switched into mains, and vice versa. Both power supplies can be used on the same unit. Most models are less than 3 kg (6.6 lbs) and are available with your choice of "no handle" (for easy mounting on benches or other areas), a "top handle" or a "pistol handle". All Labino MPXL models are available with spotlight, midlight or floodlight beam.



Summary of features available with each Led Model

Labino AB LED UV Lights	One housing	Two housings (luminary/ ballast)	Battery	Mains	UV Intensity *	Beam Profile (> 1 200 µW/cm²) *
<b>SX SERIES – HANDHELD LIGHT</b>						
<b>SuperXenon 50 W</b> Spotlight	×	–	×	×	60 000 µW/cm²	Ø 140 mm
<b>SuperXenon 50 W</b> Midlight	×	–	×	×	17 000 µW/cm²	Ø 230 mm
<b>SuperXenon 50 W</b> Floodlight	×	–	×	×	5 800 µW/cm²	Ø 290 mm
<b>SuperXenon 35 W</b> Spotlight	×	–	×	×	45 000 µW/cm²	Ø 125 mm
<b>SuperXenon 35 W</b> Midlight	×	–	×	×	10 000 µW/cm²	Ø 200 mm
<b>SuperXenon 35 W</b> Floodlight	×	–	×	×	4 000 µW/cm²	Ø 250 mm
<b>135 SERIES – 35 W HANDHELD LIGHT</b>						
<b>Compact</b> Spotlight	×	–	–	×	45 000 µW/cm²	Ø 125 mm
<b>Compact</b> Midlight	×	–	–	×	10 000 µW/cm²	Ø 200 mm
<b>Compact</b> Floodlight	×	–	–	×	4 000 µW/cm²	Ø 250 mm
<b>DUO</b> Spotlight	–	×	–	×	45 000 µW/cm²	Ø 125 mm
<b>DUO</b> Midlight	–	×	–	×	10 000 µW/cm²	Ø 200 mm
<b>DUO</b> Floodlight	–	×	–	×	4 000 µW/cm²	Ø 250 mm
<b>TrAc Light</b> Spotlight	×	–	×	–	45 000 µW/cm²	Ø 125 mm
<b>TrAc Light</b> Midlight	×	–	×	–	10 000 µW/cm²	Ø 200 mm
<b>TrAc Light</b> Floodlight	×	–	×	–	4 000 µW/cm²	Ø 250 mm
<b>TrAc Light PRO</b> Spotlight	–	×	×	–	45 000 µW/cm²	Ø 125 mm
<b>TrAc Light PRO</b> Midlight	–	×	×	–	10 000 µW/cm²	Ø 200 mm
<b>TrAc Light PRO</b> Floodlight	–	×	×	–	4 000 µW/cm²	Ø 250 mm

\* At a distance of 38 cm (15 inches)

# SuperXenon 50 W and SuperXenon 35 W

Light handheld device producing an extremely high UV intensity for use either inhouse or on the field by simply switching the docking device of mains with battery, both fit on the same lamp.



**TOP HANDLE**

A top handle can be chosen instead of the pistol handle.



**NO HANDLE**

No handle can be chosen and instead add a mounting bracket for fixed installation.



**ON/OFF SWITCH**

On/Off switch at the back prevents accidental activation.



**BATTERY OR MAINS POWERED**

Powered with your choice of either a rechargeable battery or via Mains equipped with a 2.8 meter (9 feet) long extendable cord. You can switch between a battery and mains on the same lamp, both devices fit to the same lamp.

## Accessories for SX Series

**Labino SuperXenon 50 W UV lamp** is one of the most powerful handheld UV lamps on the market. The 50 W Xenon bulb generates an extremely high UV intensity, providing a very clear excitation of fluorescent material. This lamp makes it possible to search very large areas. You can use a floodlight reflector and still see excitations in daylight and at great distances. The Labino SuperXenon is also available with a 35 W UV bulb.

This lamp contains the electronics and bulb in a single housing and is available with no handle – add a mountain bracket instead, a pistol handle as well as a top handle. This product can be operated using two different power systems

### TECHNICAL DATA

SuperXenon 50 W and SuperXenon 35 W	
Power:	50 W or 35 W
Wavelength:	365 nm (peak) +/- 5 nm
Estimated UV bulb life:	2 000 hours
UV-B:	100% free from UV-B
Filter:	White light block filter
Power supply:	Battery or Mains
Weight Battery:	1.4 kg (3.1 lbs)
Weight Mains:	1.9 kg (4.2 lbs)
SuperXenon 50 W Battery running time:	1 hours (+/- 5%)
SuperXenon 35 W Battery running time:	1 hours (+/- 5%)

SuperXenon 50 W and SuperXenon 35 W	
UV Block Visor	
UV Block Goggles XC	
Protection PSU Bracket	
Magnet for PSU	
Customized Carrying Case	
Friction arm	

– battery as well as mains. The mains model weighs just 1.4 kg (3.1 lbs) and the battery operated model weighs 1.9 kg (4.2 lbs). The battery is a docking battery. You can easily replace to a new battery and charge the used one. You can also switch between a battery and mains on the same lamp by switching the docking devices – both fit to the same lamp. The mains model is equipped with a 2.8 meter (9 feet) long extendable cord.

Each lamp obtains full power in 5-15 seconds and can be switched on and off whenever used, without pre-cooling.

### FACTS ABOUT SuperXenon 50 W

Output Characteristics	SuperXenon 50 W Spotlight	SuperXenon 50 W Midlight	SuperXenon 50 W Floodlight
Intensity	≈ 60 000 μw/cm <sup>2</sup>	≈ 17 000 μw/cm <sup>2</sup>	≈ 5 800 μw/cm <sup>2</sup>
Visible light	<13 Lux / 1.3 fc	<5 Lux / 0.5 fc	<2 Lux / 0.2 fc
Beam > 1 200 μw/cm <sup>2</sup>	Ø 140 mm (5.5 ")	Ø 230 mm (9.1 ")	Ø 290 mm (11.4 ")

### FACTS ABOUT SuperXenon 35 W

Output Characteristics	SuperXenon 35 W Spotlight	SuperXenon 35 W Midlight	SuperXenon 35 W Floodlight
Intensity	≈ 45 000 μw/cm <sup>2</sup>	≈ 10 000 μw/cm <sup>2</sup>	≈ 4 000 μw/cm <sup>2</sup>
Visible light	<10 Lux / 1.0 fc	<3 Lux / 0.3 fc	<2 Lux / 0.2 fc
Beam > 1 200 μw/cm <sup>2</sup>	Ø 125 mm (4.9 ")	Ø 200 mm (7.9 ")	Ø 250 mm (9.8 ")

# Compact and DUO 35 W

High UV intensity and great portability.



**COMPACT PH135 – PISTOL HANDLE**

A pistol handle can be selected instead of the top handle.



**COMPACT H135 – NO HANDLE**

No handle can be selected and instead add a mounting bracket for fixed installation.



**DUO P5135 – PISTOL HANDLE SHORT**

Two-part lamp consisting of a light weight luminary unit with pistol handle and a ballast (electronics) unit can be selected.



**DUO OSH135 – TOP HANDLE SHORT**

Two-part lamp consisting of a light weight luminary unit with top handle and a ballast (electronics) unit can be selected.



**DUO S135 – NO HANDLE**

Two-part lamp consisting of a light weight luminary unit with no handle and a ballast (electronics) unit can be selected.



**Labino Compact and DUO UV lamps** are operated via mains only. These 35 W UV lamps generate a very high UV intensity, suitable for inspections in heavy industries with very difficult operating environments.

The Labino Compact lamp contains a trigger ballast (electronics) and a bulb in a single housing, making it easier for the operator to use and move around large inspection areas, it weighs 2.3 kg (5 lbs).

The Labino DUO is a two-part lamp consisting of a light weight luminary unit and a ballast (electronics) unit. The

luminary unit weighs just 1.2 kg (2.6 lbs) and works best for time consuming and repetitive inspections within the same location. The ballast unit weighs 1.5 kg (3.3 lbs). This product is accompanied with two cords, a 3.0 meter (9.8 feet) cord that connects the luminary unit with the ballast unit and a 2.0 meter cord for the outlet.

Each lamp obtains full power in 5-15 seconds and can be switched on and off whenever used, without pre-cooling. 135 Series lamps have an ingress protection marking of IP65.

**FACTS ABOUT COMPACT AND DUO 35 W**

Output Characteristics	Compact and DUO 35 W Spotlight	Compact and DUO 35 W Midlight	Compact and DUO 35 W Floodlight
Intensity	≈ 45 000 μw/cm <sup>2</sup>	≈ 10 000 μw/cm <sup>2</sup>	≈ 4 000 μw/cm <sup>2</sup>
Visible light	<10 Lux / 1.0 fc	<3 Lux / 0.3 fc	<2 Lux / 0.2 fc
Beam > I 200 μw/cm <sup>2</sup>	Ø 125 mm (4.9 ")	Ø 200 mm (7.9 ")	Ø 250 mm (9.8 ")

**TECHNICAL DATA**

	Compact and DUO 35 W
Power:	35 W
Wavelength:	365 nm (peak) +/- 5 nm
Estimated UV bulb life:	2 000 hours
UV-B:	100% free from UV-B
Filter:	White light block filter
Power supply:	Mains
Weight Compact:	2.3 kg (5 lbs)
Weight DUO:	Luminary 1.2 kg (2.6 lbs) Ballast 1.5 kg (3.3 lbs)

**Accessories for 135 Series**

	Compact and DUO 35 W
UV Block Visor	
UV Block Goggles XC	
Protection PSU Bracket	
Magnet for PSU	
Customized Carrying Case	
Friction arm	

# TrAc Light and TrAc Light PRO

High UV intensity and great portability.



**TRAC LIGHT**

Electronics, battery and bulb in a single housing.



**TRAC LIGHT PRO**

Two-part lamp consisting of electronics and luminary.



**Labino TrAc Light and TrAc Light PRO** are battery operated. Each unit is equipped with a 35 W lamp that creates a very robust UV intensity.

The Labino TrAc Light lamp contains the trigger ballast (electronics), battery and bulb in a single housing. It weighs 2.3 kg (5.1 lbs). The battery has a running time of 1.3 hours and each unit is equipped with a current regulator to keep the intensity stable when the battery fades.

The Labino TrAc Light PRO is a two-part lamp consisting of a light weight luminary unit and a ballast (electronics) unit. The luminary unit weighs just 1.1 kg (2.4 lbs) and the ballast unit weighs 2.4 kg (5.3 lbs). The battery has a running time of 2.5 hours.

Each lamp obtains full power in 5-15 seconds and can be switched on and off whenever used, without pre-cooling. 135 Series lamps have an ingress protection marking of IP65.

**TECHNICAL DATA**

TrAc Light and TrAc Light PRO	
Power:	35 W
Wavelength:	365 nm (peak) +/- 5 nm
Estimated UV bulb life:	2 000 hours
UV-B:	100% free from UV-B
Filter:	White light block filter
Power supply:	Battery
Weight TrAc Light:	2.3 kg (5.1 lbs)
Weight TrAc Light PRO:	Luminary 1.1 kg (2.4 lbs) Ballast 2.4 kg (5.3 lbs)
Battery running time TrAc Light:	1.3 hour (+/- 5%)
Battery running time TrAc Light PRO:	2.5 hour (+/- 5%)

Accessories for 135 Series

TrAc Light and TrAc Light PRO	
UV Block Visor	
UV Block Goggles XC	
Protection PSU Bracket	
Magnet for PSU	
Customized Carrying Case	
Friction arm	

**FACTS ABOUT TRAC LIGHT AND TRAC LIGHT PRO**

Output Characteristics	TrAc Light and TrAc Light PRO Spotlight	TrAc Light and TrAc Light PRO Midlight	TrAc Light and TrAc Light PRO Floodlight
Intensity	≈ 45 000 μw/cm <sup>2</sup>	≈ 10 000 μw/cm <sup>2</sup>	≈ 4 000 μw/cm <sup>2</sup>
Visible light	<10 Lux / 1.0 fc	<3 Lux / 0.3 fc	<2 Lux / 0.2 fc
Beam > 1 200 μw/cm <sup>2</sup>	Ø 125 mm (4.9 ")	Ø 200 mm (7.9 ")	Ø 250 mm (9.8 ")

# Labino® UV Blocking Spectacles “Armamax”



**MAKES IT BRIGHT**

## LIGHT WEIGHT | UV BLOCKING

These clear lens spectacles offer 99.9 % protection against ultraviolet radiation, provide optimum viewing contrast and help reduce eye fatigue. The spectacles are lightweight and fit comfortably on the face, even

over prescription glasses. Curved temples and raised nose bridge offer a precise fit. Side arm panels offer additional eye protection. The side panels are frosted and brow guard sections reduce glare and reflections.



## TECHNICAL SPECIFICATION

### Description

- Heat resistance: up to 130°C
- Weight: 46g
- Lens Color: Clear

### Frame

- One-piece black nylon frame with integrated side protection
- Superior protection integrated to the front bar
- Universal nose piece moulded in the lens

### Lenses

- Clear polycarbonate lens with anti-scratch coating
- Optical quality class 1 (no distortion)
- 99,9 % UV filtration up to 385 nm (in conformity with EN 166)
- Visible light transmittance = 92 %

### DISTRIBUTOR:

#### **ADVANCED NDT LTD**

[www.advanced-ndt.co.uk](http://www.advanced-ndt.co.uk)

#### **Advanced NDT Limited**

Orchard House, Orchard Close  
Severn Stoke, Worcester, WR8 9JJ, England

**Tel:** 01905 371460 **Fax:** 01905 371477

**Web:** [www.advanced-ndt.co.uk](http://www.advanced-ndt.co.uk)

**Email:** [sales@advanced-ndt.co.uk](mailto:sales@advanced-ndt.co.uk)

090918

# Labino® UV Blocking Spectacles “XC”



**MAKES IT BRIGHT**

## SUPER FIT | UV BLOCKING

These clear lens spectacles offer 99.9 % protection against ultraviolet radiation, provide optimum viewing contrast and help reduce eye fatigue. The spectacles are lightweight and fit comfortably on the face. Adjustable temples

and lenses with flexible nosepiece. Extra flexible frame and easily replaceable lenses - they can be changed easily without replacing the entire frame for a longer product life and cost savings.



## TECHNICAL SPECIFICATION

### Description

- Heat resistance: up to 130°C
- Weight: 31 gr
- Lens Color: Clear

### Frame

- Adjustable temples
- Easily replaceable lenses
- Lenses with flexible nosepiece

### Lenses

- Clear polycarbonate lens with anti-scratch coating
- Optical quality class 1 (no distortion)
- 99,9 % UV filtration up to 385 nm (in conformity with EN 166)
- Visible light transmittance = 92 %

### DISTRIBUTOR:

**ADVANCED NDT LTD**

[www.advanced-ndt.co.uk](http://www.advanced-ndt.co.uk)

**Advanced NDT Limited**

Orchard House, Orchard Close  
Severn Stoke, Worcester, WR8 9JJ, England

**Tel:** 01905 371460 **Fax:** 01905 371477

**Web:** [www.advanced-ndt.co.uk](http://www.advanced-ndt.co.uk)

**Email:** [sales@advanced-ndt.co.uk](mailto:sales@advanced-ndt.co.uk)

# Labino® Face Shield



**MAKES IT BRIGHT**

## ADJUSTABLE | UV BLOCKING |

2 784 possible adjustments makes it unique. Through its many adjustable features, the Bionic face shield gives the most comfortable fit in the industry.

The shield has got an extended top of head and chin protection and a large superior-quality visor for maximum visibility.

The visors are easily replaced and available in different materials, tints and finishes to better suit individual needs.



**Hard hat Adapter**

### ADVANCED NDT LTD

[www.advanced-ndt.co.uk](http://www.advanced-ndt.co.uk)

#### Advanced NDT Limited

Orchard House, Orchard Close  
Severn Stoke, Worcester, WR8 9JJ, England

Tel: 01905 371460 Fax: 01905 371477

Web: [www.advanced-ndt.co.uk](http://www.advanced-ndt.co.uk)

Email: [sales@advanced-ndt.co.uk](mailto:sales@advanced-ndt.co.uk)

## TECHNICAL SPECIFICATION

### Technical description

- Incredible adjustability - 2784 possible wearer positions
- Fully adjustable ratchet headgear
- Fully adjustable headband
- Multiple visor tilt positions
- Extra soft cushioning on all parts of the shield in contact with the head
- Breathable extra-soft sweatband is removable for easy washing and replacement
- Comfortable fit with goggles or respirators
- Locking mechanism for more complete safety

### Lens

- Clear polycarbonate lens with anti-scratch coating
- Optical quality class 1 (no distortion)
- 99,9 % UV filtration up to 385 nm
- Visible light transmittance = 92 %

### Standards

In conformity with Standard:

- EN166

### Accessories

- Hard hat Adapter
- Extra Visor
- Sweat Band

090918



**Labino Contacts**

**Corporate Mailing and Visiting Address:**

LABINO AB  
Fågelsångsvägen 16,  
186 42 Vallentuna  
SWEDEN

**Customer Service & Sales:**

Phone: +46 8 83 90 70  
[labino@labino.com](mailto:labino@labino.com)

**Technical Support:**

Phone: +46 8 83 90 70  
[technicalsupport@labino.com](mailto:technicalsupport@labino.com)

**Accounting and Finance:**

Phone: +46 8 83 90 70  
[accounting@labino.com](mailto:accounting@labino.com)

[www.labino.com](http://www.labino.com)

**Advanced NDT Limited**

Orchard House, Orchard Close  
Severn Stoke, Worcester, WR8 9JJ, England

**Tel:** 01905 371460 **Fax:** 01905 371477

**Web:** [www.advanced-ndt.co.uk](http://www.advanced-ndt.co.uk)

**Email:** [sales@advanced-ndt.co.uk](mailto:sales@advanced-ndt.co.uk)