

Vertical Awning

Fitting vertical awning into some places makes them look more esthetic, this type of awning has the advantages below:

*Two-piece carter, for easy assembly and repair

*Wall support, without any gaps

*Ceiling support using a small aluminum (16x10mm) which covers the gap between the ceiling and the carter



Vertical Awning

Technical features

Maximum Dimensions

To cover an area of 450 x 350 cm

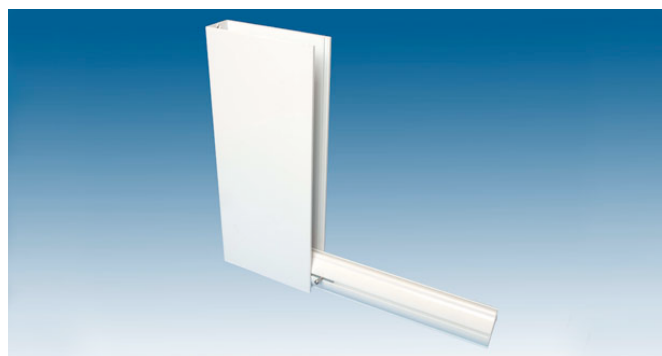


Operating System

Can be manual with a handle or tubular motor with a switch

Framework Colour

White colour RAL 9016 as standard,
Special powder coating available in other RAL
colours (price increase)



Side channels & front bar



Cassette ceiling and
wall fitting

