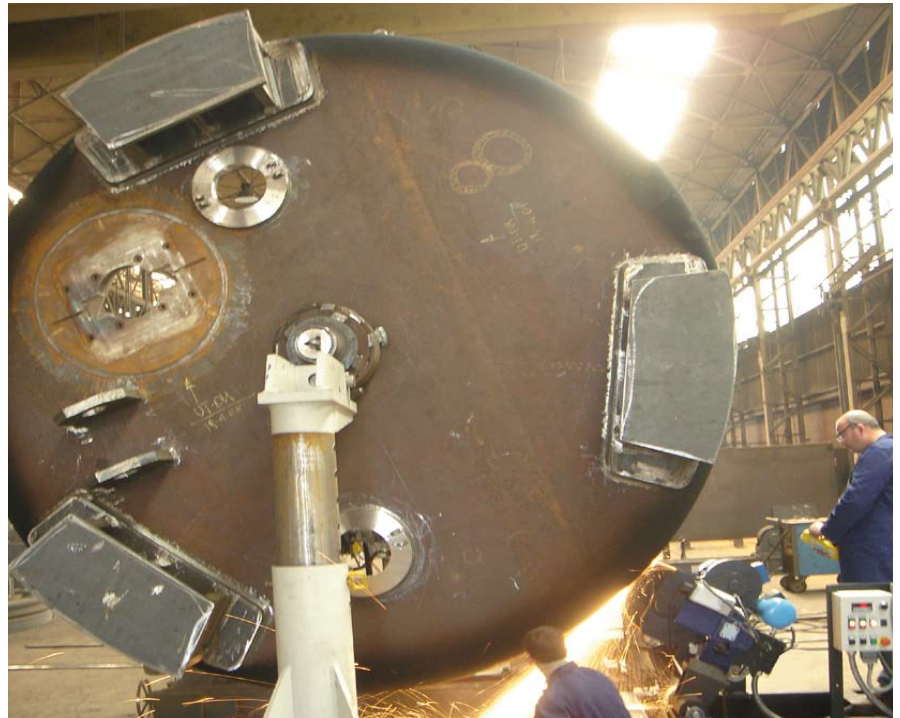


G400 Grinder



Pipe Beveling Machines
Pipe Cutting Machines
Grinding Machines
Pipe Stands and Clamps
Pipe Purging
Plate Bevelers
Heat Exchanger, Boiler & Bundle

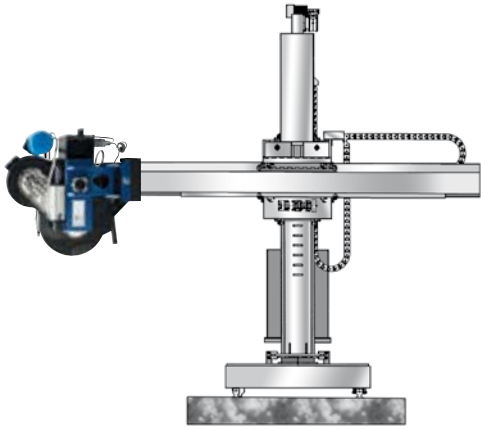
 **GBC UK** 
THE CUTTING & BEVELLING EXPERTS

The GBC G400 is a light, powerful, compact and versatile grinder, suitable for rapidly carrying out the main process of back grinding root runs on boiler vessels etc .

- back gouging for welding root removal
- polishing of dish ends, vessels, cones, poles etc
- tack - welded edges preparation by grinding
- welding seam over-thickness removal



GBC G400 shown mounted on trolley, during typical back grinding operation, circumferential on O.D. of pressure vessel. The trolley allows easy handling and moving of the grinding head.

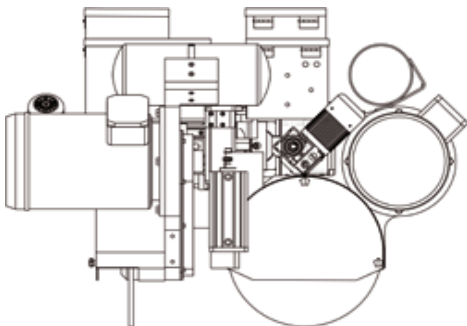


GBC G400 mounted on column welding boom arm, equipped with needle bearing kit for 360° rotation. This layout allows for back grinding circumferential, longitudinal, outside and inside on large diameter vessels.



G 400 Grinder head feeding system is pneumatic with compensation which retracts the feeding piston when it senses meeting ovality.

Operator can restore the correct feeding rate of grinding disc on the vessel.



Grinding head can turn of 90° for dedicated set up when performing longitudinal back gouging (mounted on column welding boom arm only).



Advantages

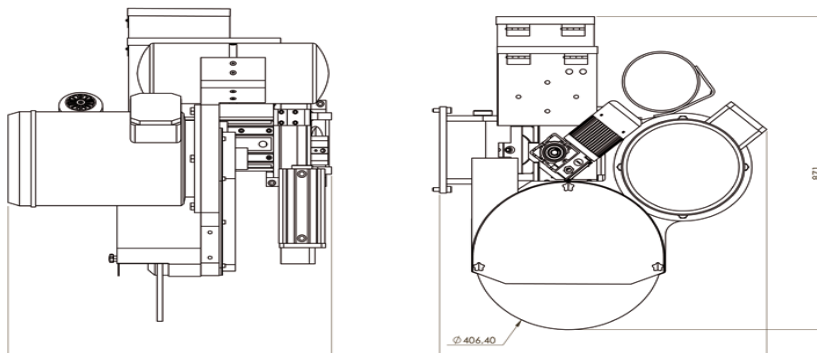
The GBC G400 Grinder, is the latest development for all grinding operations during boiler and pressure vessel manufacturing, with the result of following advantages compared with manual execution by single operator with angle grinder:

- Time - save up 80% for back gouging operation
- High material rate removal
- No thermal alteration (heat affected zone) of welding area
- Consistent material removal around the whole circumference
- Vibrations free
- Safety & working condition improvement
- Drop of injury on duty (grinding sparks, tendinitis, sprains, stress fractures) due to extended angle grinder handling time

TECHNICAL FEATURES

O.D. Circular gauging mini diam.	mm	500
Longitudinal outside gauging mini diam.	mm	500*
Longitudinal inside gauging mini diam.	mm	1500
Max grinding disc diam.	mm	400
Grinding disc thickness	mm	8-16
Motor power	Kw	9,0
Max grinding wheel cutting speed	m/s	65
Max diam. flap wheel	mm	300
Flap wheel width	mm	40-75
Feeding stroke	mm	135
Drifting stroke	mm	95
Max grinding depth	mm	80**

Min. tube elevation from ground 1 meter
If using brand new grinding wheel





GBC Industrial Tools Ltd
7 Drakes Drive
Crendon Business Park
Long Crendon
HP18 9FE

T: 01844 201 555
F: 01844 201 454

sales@gbc-uk.com
www.gbc-uk.com