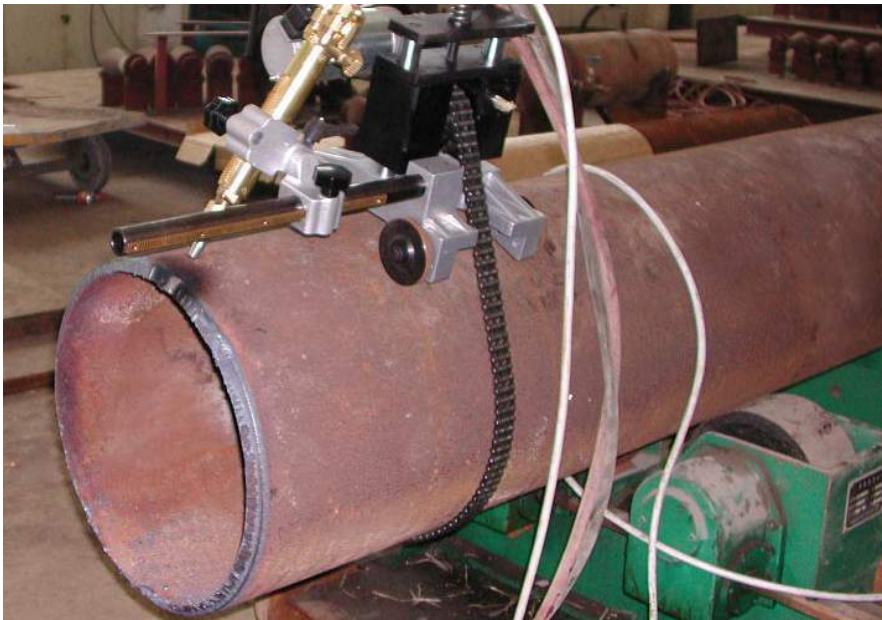


GB CUT HD 4"-80" HEAVY DUTY PIPE CUTTING MACHINE



WORKING RANGE:
4" – 80" OUTER DIAMETER

WHEELS POSITIONS:
THREE POSITIONS (FOR O.D.
4"-16"/16"-32"/32"-80")

TORCH SET UP AXIS:
THREE AXIS

ROTATION:
MANUAL OR LOW VOLTAGE
MOTORIZED KIT WITH REMOTE
CONTROL

VOLTAGE⁽¹⁾:
220 VOLT (DIFFERENT VOLTAGE
UPON REQUEST)
VOLTAGE IN THE MOTOR: 24 VOLT
⁽¹⁾ FOR MOTORIZED KIT VERSION

The GB CUT can cut & bevel pipes from 4" to 80" diameter. The torch is mounted in a holder which can be adjusted through 3 axes for perfect positioning. Double link chain and adjustable wheel positions enable the GB CUT to perform precise, square cuts.

Available in manual or motorised versions.

The motorisation kit can also be fitted retrospectively.



Adjustable torch holder



Motorised version