

May 2017

View in your browser

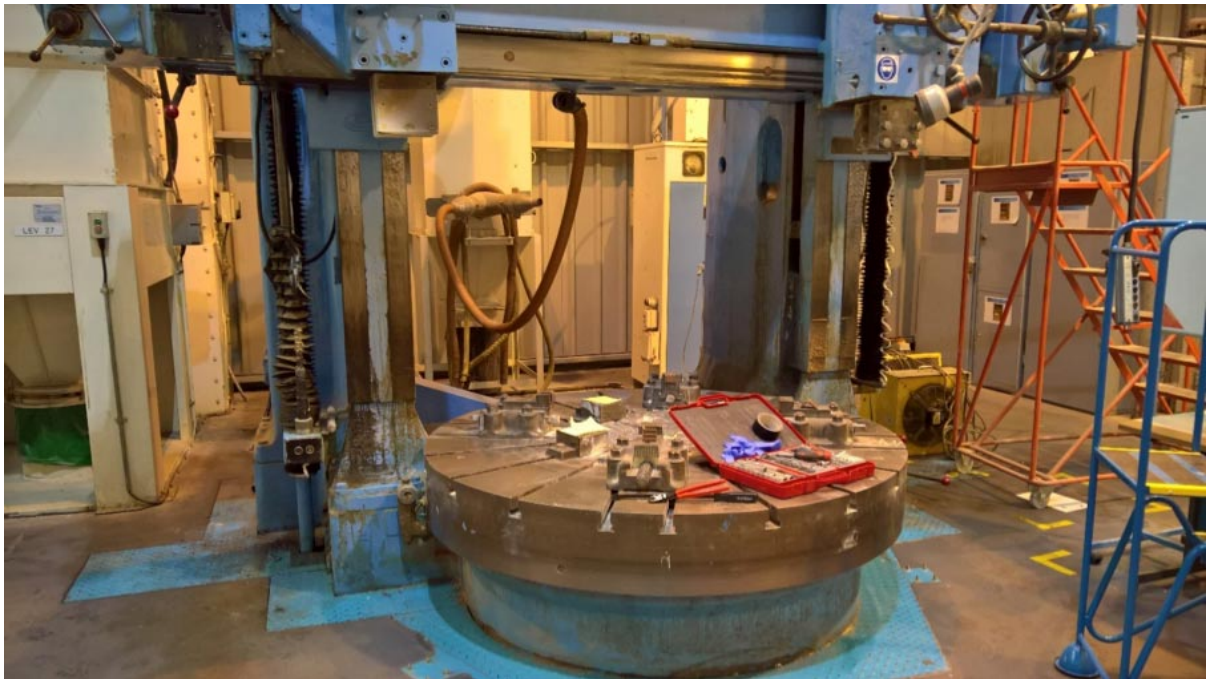


May 2017 Machinery Guarding - case study

Vertical Turning Lathe Guards & Vertical Boring Machine Guards

Machine Covers Limited and our partner company ISS Safety Limited were recently instructed to supply, install and integrate machinery guarding for the machine below. This instruction was based on the recommendations we outlined in our PUWER/risk assessment survey of the customer's production machinery.

- machine before guarding -



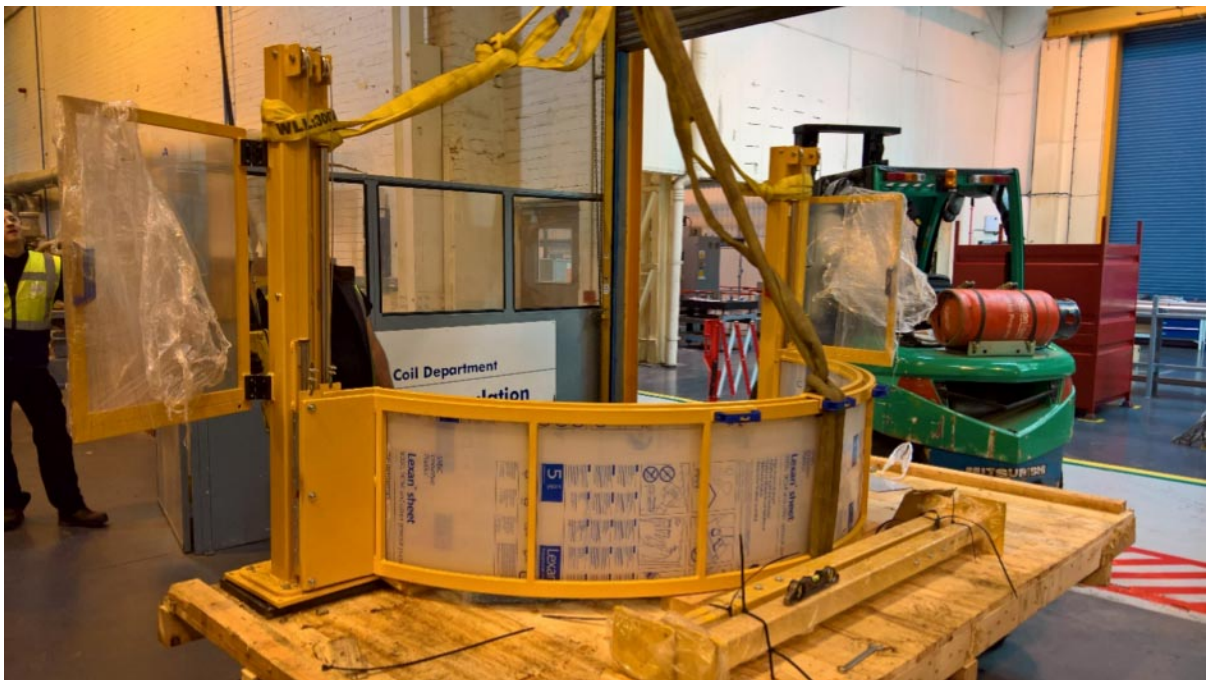
The Repair2 TGS range of guarding is by far the best option available as it provides the highest level of protection and is the most user friendly. In our opinion this range offers the best vertical turning lathe guards and vertical boring machine guards available.

The TGS range is available with single or double curved 500mm-high

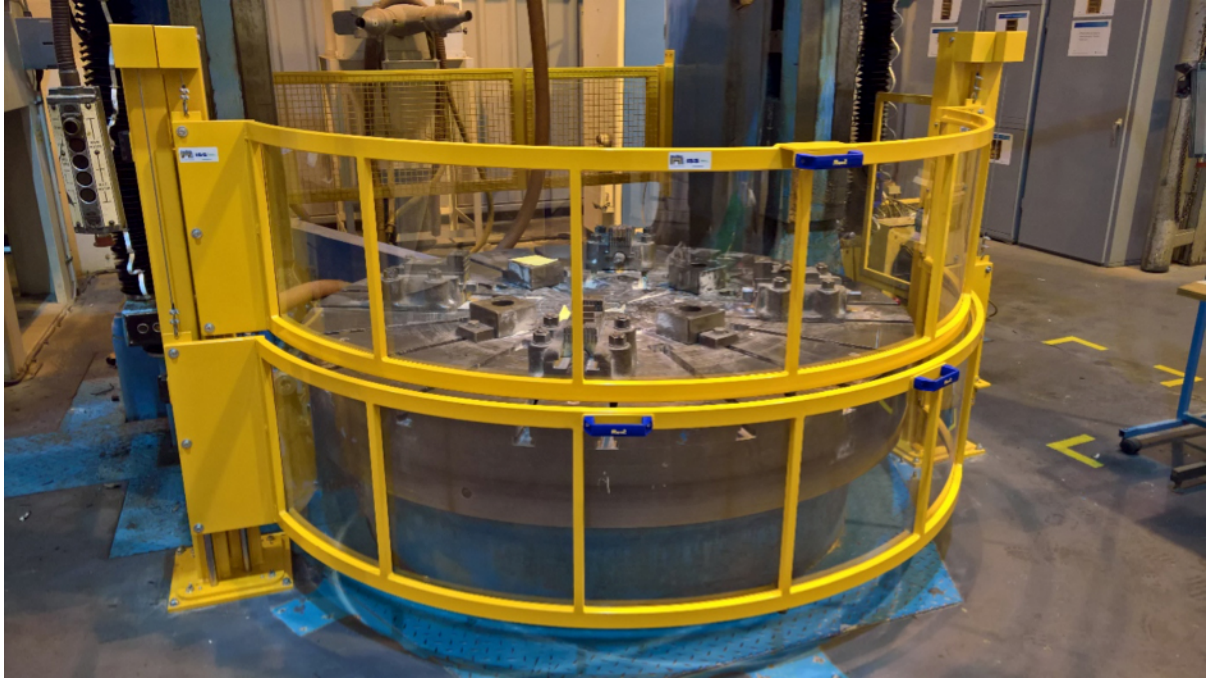
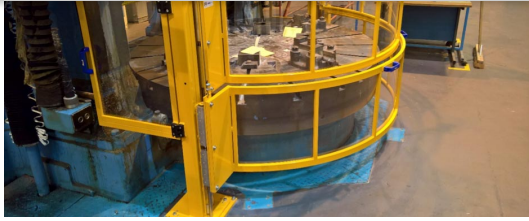
and are fully counterbalanced, thus avoiding any manual handling issues.

- New guard during installation -

- The guard is anchored to the ground on a double plate.
- This system allows for final alignment on an uneven floor.
- The hinged side screens are manufactured and supplied to suit.
- Standard interlocking (supplied) is with a 2NC-1NO IP67 tongue switch.
- Solenoid interlocking is optional.



- New guard installed -



- view the video of the machine after installation -



- Electrical integration of the TGS guard by our partner company
ISS Safety Limited -

guard is fitted with solenoid controlled tongue switches which allow the guard and gate to be opened only when the table has stopped rotating.

The rotational speed is detected by a Standstill Monitoring Safety Relay. When it has stopped, a push button illuminates indicating that the guard can be unlocked by pressing the button. When the guard is open, the table can only be 'jogged' for set up and clocking by pressing the hold to run push button. When the guard is closed, the machine can be operated normally.



The rear hinged gate is rarely used but is locked when the table is rotating and can only be unlocked when it has stopped. When the gate is opened an emergency stop is initiated. The table cannot be jogged or started with the rear gate open.

- Other examples of vertical turning lathe guards & vertical boring machine guards -



The standard range TGS01CM (1 screen) - TGS02 (2 screens)

- 1TGS01CM1500 - Sliding guard for vertical lathe (1 screen) with micro up to Dia. 1500 h 500
- 1TGS01CM1700 - Sliding guard for vertical lathe (1 screen) with micro up to Dia. 1700 h 500
- 1TGS01CM2000 - Sliding guard for vertical lathe (1 screen) with micro up to Dia. 2000 h 500
- 1TGS02CM1500 - Sliding guard for vertical lathe (2 screens) with micro up to Dia. 1500 h 500 ea
- 1TGS02CM1700 - Sliding guard for vertical lathe (2 screens) with micro up to Dia. 1700 h 500 ea
- 1TGS02CM2000 - Sliding guard for vertical lathe (2 screens) with micro up to Dia. 2000 h 500 ea

speed control and jog control on request.

For more information or to arrange a visit please email
info@machinecovers.co.uk
or call us on 01452 770166

This email was sent to you by Machine Covers Limited.
Contact info@machinecovers.co.uk or +44 (0)1452 770166 for more information

This email was sent to <<Email Address>>
[why did I get this?](#) [unsubscribe from this list](#) [update subscription preferences](#)
Machine Covers · Stancombe Works · Stroud Road · Bisley, Gloucestershire GL6 7NQ · United Kingdom



MailChimp