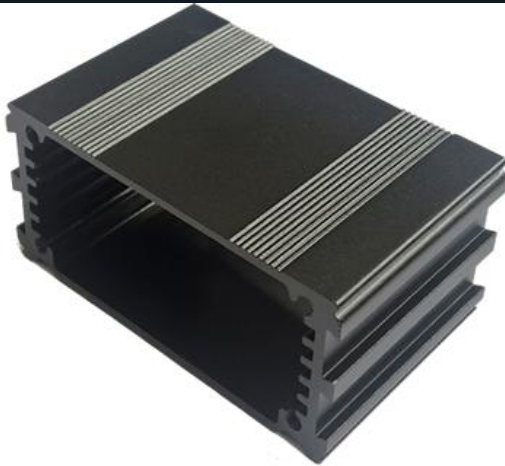


Series 1 Enclosures & Product Accessories



Series 1 Enclosures are available in standard lengths of 40mm, 80mm and 120mm with custom enclosure lengths available upon request. Standard colour options include black, blue, red & silver, but we can offer any custom colour. Black and silver can be purchased individually whilst blue and red have a minimum order quantity of 10 pieces. All enclosures are supplied with

2 End Plates & 8 Assembly Screws as standard.

The Series 1 Enclosure is able to house a circuit board with a maximum width of 55mm, with a maximum PCB component width of 50mm, with a maximum PCB component height of 18-20mm depending on orientation with any length required. If you have a narrower circuit board we can offer carrier plates, which will be customised to fit your specific circuit board. Carrier plates are sold individually and are only available in silver.

Accessories for Series 1 Enclosures include Aluminium or ABS Mounting Brackets used to secure the enclosure to walls, doors, bulkheads and any other surface. Aluminium or Acrylic End Plates both can be fully customised to meet your specifications. Acrylic End Plates are ideal for RF/WI-FI capabilities. ABS End Caps supplied with assembly screw cap covers to prevent misuse or damage from impacts and falls. Sealing Kits protect to IP65 or IP66 rating depending on whether the washers are used.

Series 1 Enclosures - PCB Dimensions

PCB Width	Max PCB Width for Components	Max Component Height
55mm	50mm	18 - 20mm

Custom Enclosure Lengths / Carrier Plates are available on request.

Series 1 Enclosures - Customisation Services

Service	Milled Holes	Punched Holes	Colour Anodised	Printed Text	Other Options
Extrusion	Yes	No	Yes	Yes	Custom Lengths
End Plates	Yes	Yes	Yes	Yes	Milled From Solid

Series 1 Enclosures - Length & Colour Options

Series 1 Enclosures - Length 40mm

Did you know Custom Colours & Lengths are available on request.

Part No	Colour	Length	Width	Height
S1-040-BK	Black	40mm	63.5mm	30mm
S1-040-BL	Blue			
S1-040-RD	Red	1.57"	2.50"	1.18"
S1-040-SI	Silver			

Black & Silver MOQ 1+ / Blue & Red MOQ 10+

Series 1 Enclosures - Length 80mm

Did you know Custom Colours & Lengths are available on request.

Part No	Colour	Length	Width	Height
S1-080-BK	Black	80mm	63.5mm	30mm
S1-080-BL	Blue			
S1-080-RD	Red	3.15"	2.50"	1.18"
S1-080-SI	Silver			

Black & Silver MOQ 1+ / Blue & Red MOQ 10+

Series 1 Enclosures - Length 120mm

Did you know Custom Colours & Lengths are available on request.

Part No	Colour	Length	Width	Height
S1-120-BK	Black	120mm	63.5mm	30mm
S1-120-BL	Blue			
S1-120-RD	Red	4.72"	2.50"	1.18"
S1-120-SI	Silver			

Black & Silver MOQ 1+ / Blue & Red MOQ 10+

Series 1 Enclosures Product Accessories

Assembly Screws

Part No	Colour	Screw Type	Pack Size
ST-8-BK	Black	Self Tapping	Pack of 8
ST-8-SI	Silver		
TF-8-BK	Black	Thread Forming	
TF-8-SI	Silver		


ABS Protective End Caps


Part No	Colour	
S1-EB-BK	Black	Protect the enclosure and provides an elegant finish. Only available in Black.

Aluminium & Acrylic End Plates

Part No	Colour	
Material - Aluminium		 <p>At KGA Enclosures, our End Plates can be customised to meet your specifications. Holes and slots in the end plates for power cables and connectors. Text, graphics and a logo in full high colour definition printing can be applied to enable users to identify the product connectors or any cable fittings. We can customise any out our end plates and the minimum order quantity if 10 pieces.</p>
S1-EP-BK	Black	
S1-EP-BL	Blue	
S1-EP-RD	Red	
S1-EP-SI	Silver	
Material - Acrylic		
S1-AP-BK	Black	
S1-AP-CL	Clear	
S1-AP-SM	Smoke	

Mounting Lugs

Part No	Colour	
ML-BL	Black	

Mounting Brackets		
Part No	Colour	 <p>Extruded Aluminium Mounting Brackets allow for mounting of Series 1 - 4 & KFL Range 1 - 4 Enclosures to walls panels, bulkheads and any other surface. The mounting brackets are secured into place once the end plates are secured down onto the enclosure.</p>
Length 40mm		
MB-040-BK	Black	
MB-040-BL	Blue	
MB-040-RD	Red	
MB-040-SI	Silver	
Length 80mm		
MB-080-BK	Black	
MB-080-BL	Blue	
MB-080-RD	Red	
MB-080-SI	Silver	

Carrier Plates		
Part No	Carrier Size (mm)	<p>Carrier plates are designed to fit in to the internal slots in the extrusion and provide a surface to mount circuit boards where the internal dimensions on the enclosure and circuit board do not match. The plates are made out of 1.5mm thick plain aluminium, the surface is unfinished and can be customised with holes, slots, and mounting holes.</p>
S1-CAR-040	40 x 55	
S1-CAR-080	80 x 55	
S1-CAR-120	120 x 55	
Custom Enclosures Lengths available on request.		

Sealing Kits		
Part No	Colour	<p>Sealing Kit for IP65. Comprises of 2 Silicone Foam seals & 8 Polythene Washers.</p>
S1-SK-BK	Black	
S1-SK-WH	White	