

JPCONCRETE

Ballast Weight & Kentledge Blocks



BALLAST WEIGHT & KENTLEDGE BLOCKS

PRODUCT OVERVIEW

If you require precast concrete ballast weight and/or kentledge blocks for your project, we can supply a range of units for the job. We also offer a hire service for the blocks.

We can supply standard sizes or project-specific blocks if you require different dimensions. From design through to lifting method, we are there to help all the way. We can even deliver them on a craned vehicle to offload and place the units for you.

Alternatively, we can ship the units on a flatbed vehicle. If ordering from stock, we can usually deliver the units the very next day. However, for custom or more complicated orders, the lead time can vary between 1 and 2 weeks.

PRODUCT DIMENSIONS

UNIT WEIGHT (KG)	H (MM)	W (MM)	L (MM)
500	650	450	800
1000	750	750	750
1944	1000	900	900
2400	1000	1000	1000
5760	600	2000	2000

(500kg block features 600mm fork recess)

HOARDING BLOCK

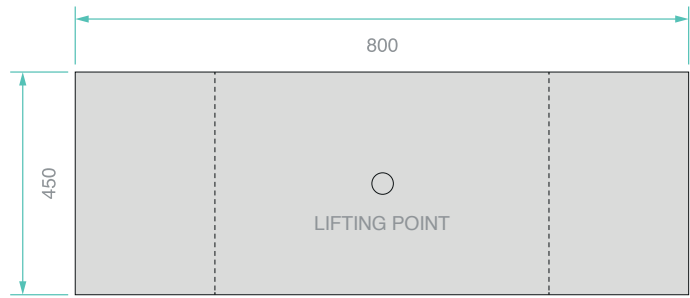
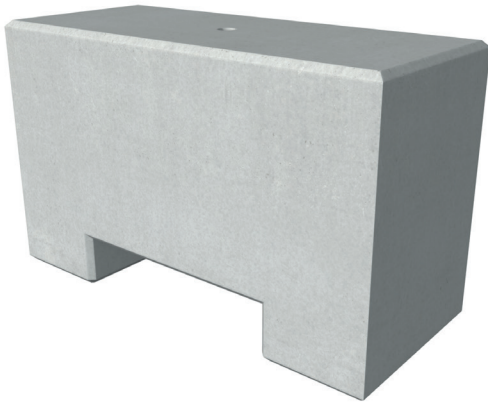
UNIT WEIGHT (KG)	H (MM)	W (MM)	L (MM)
2500 (approx)	800	450	3000



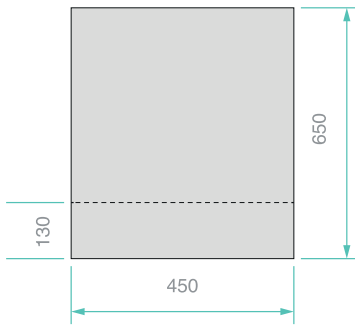
JPCONCRETE

500KG MARQUEE BLOCK

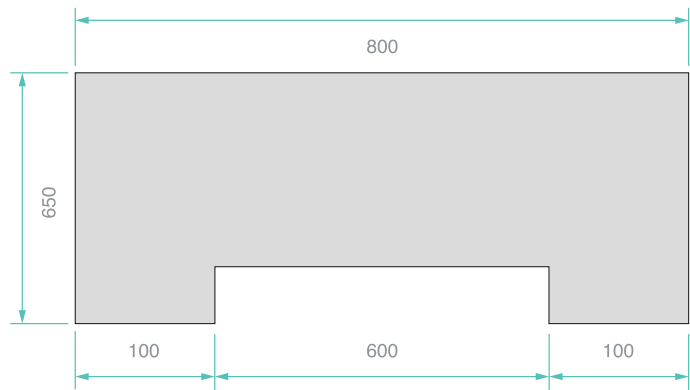
UNIT WEIGHT: 500KG



PLAN VIEW



FRONT VIEW

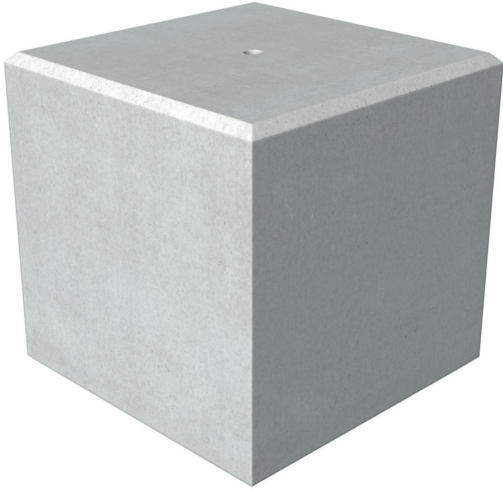


SIDE VIEW

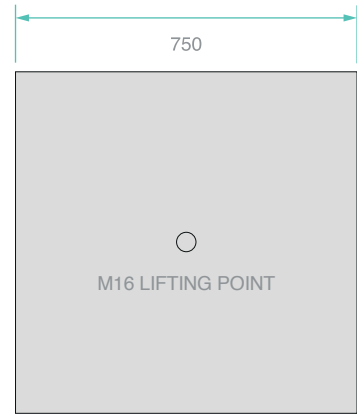
MARQUEE BLOCK UNIT DIMENSIONS

UNIT WEIGHT (KG)	H (MM)	W (MM)	L (MM)
500	650	450	800

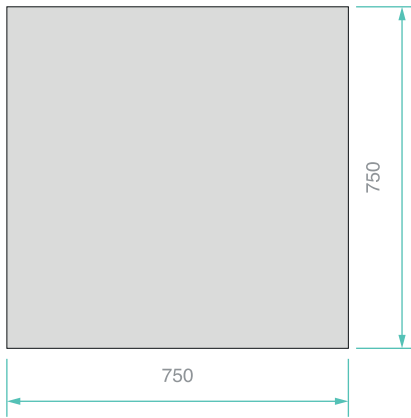
1000KG BALLAST BLOCK



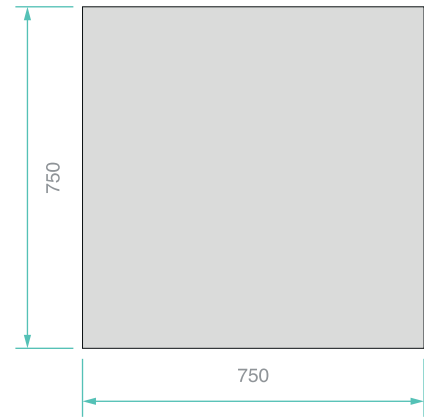
UNIT WEIGHT: 1000KG



PLAN VIEW



FRONT VIEW



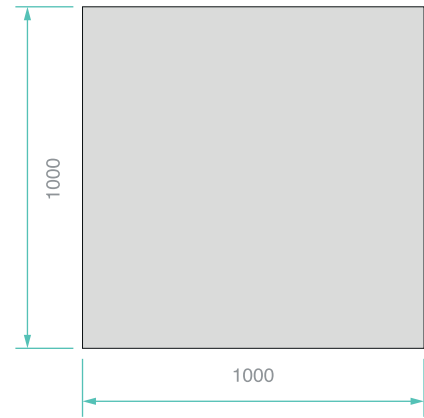
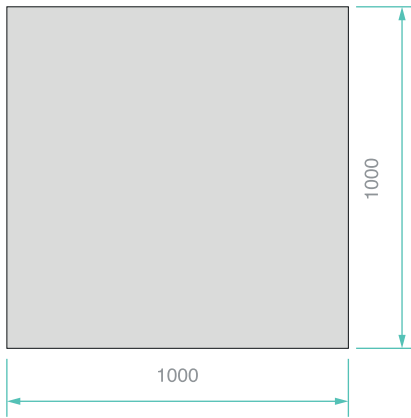
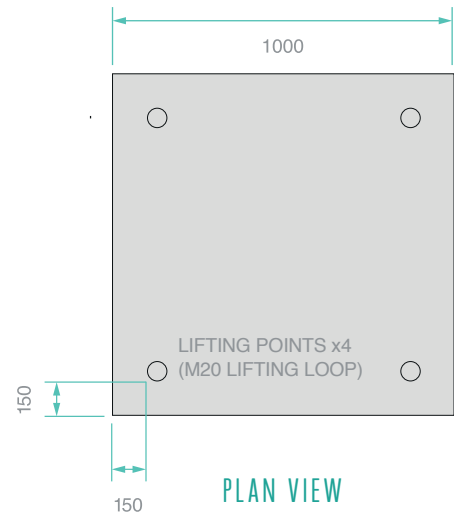
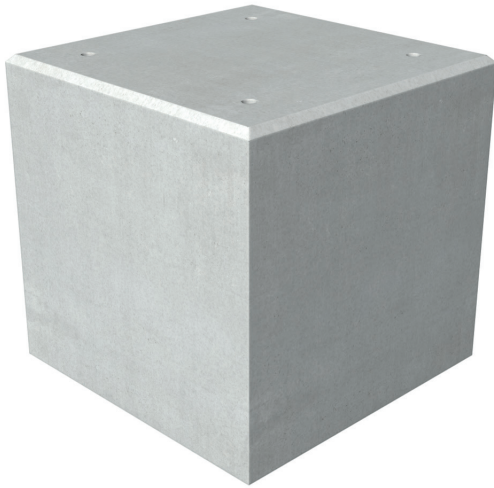
SIDE VIEW

BALLAST BLOCK UNIT DIMENSIONS

UNIT WEIGHT (KG)	H (MM)	W (MM)	L (MM)
1000	750	750	750

2400KG BALLAST BLOCK

UNIT WEIGHT: 2400KG

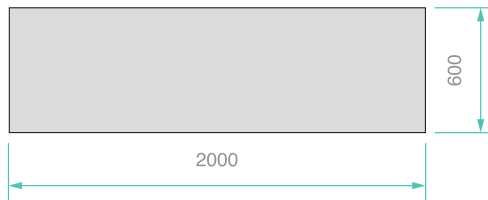
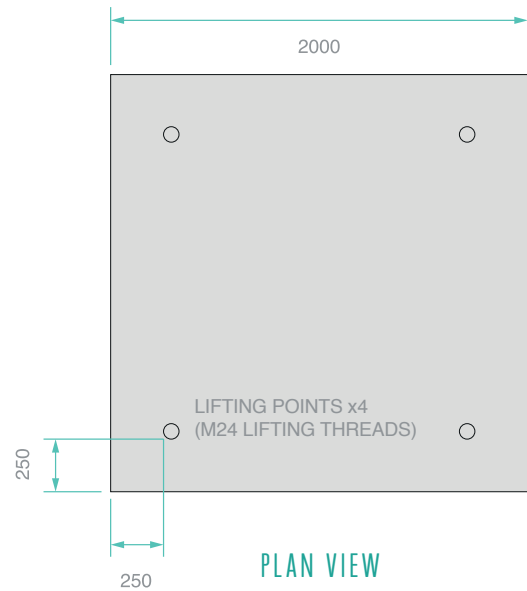
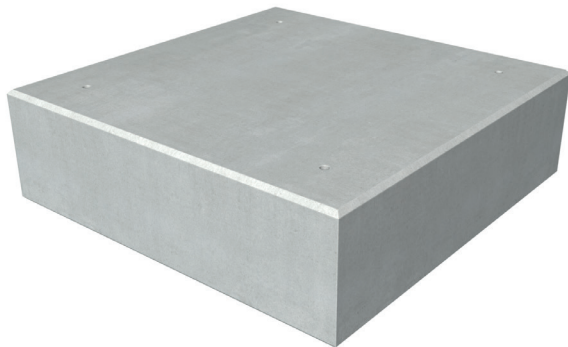


BALLAST BLOCK UNIT DIMENSIONS

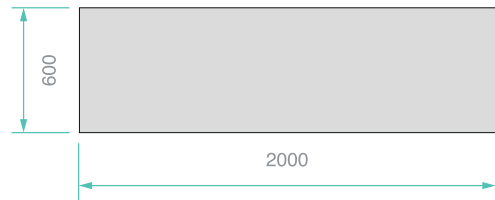
UNIT WEIGHT (KG)	H (MM)	W (MM)	L (MM)
2400	1000	1000	1000

5760KG BALLAST BLOCK

UNIT WEIGHT: 5760KG



FRONT VIEW



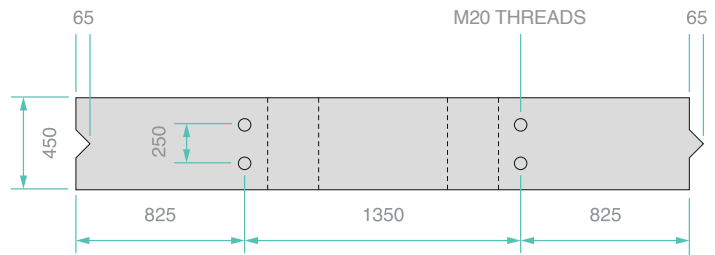
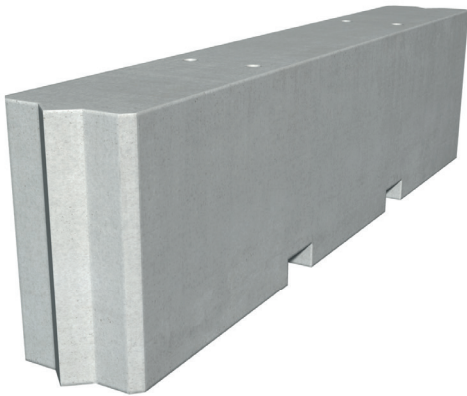
SIDE VIEW

BALLAST BLOCK UNIT DIMENSIONS

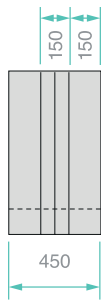
UNIT WEIGHT (KG)	H (MM)	W (MM)	L (MM)
5760	600	2000	2000

3000MM HOARDING BLOCK

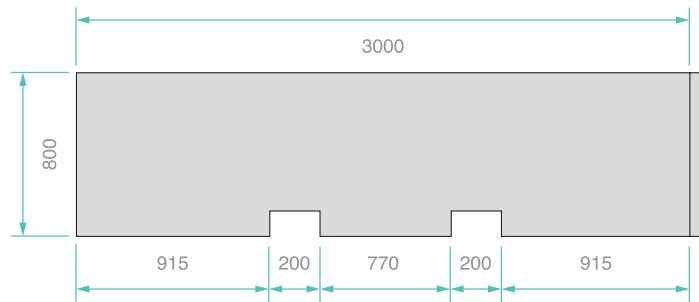
UNIT WEIGHT: 2500KG APPROX



PLAN VIEW



FRONT VIEW



SIDE VIEW

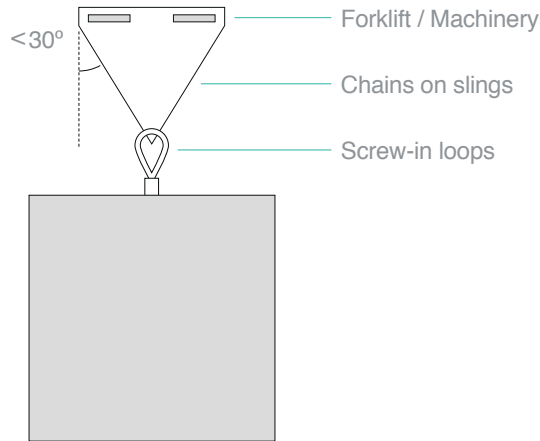
HOARDING BLOCK UNIT DIMENSIONS

UNIT WEIGHT (KG)	H (MM)	W (MM)	L (MM)
2500 (approx)	800	450	3000



HANDLING INSTRUCTIONS FOR BALLAST BLOCKS

Lifting chains must be no more than 30° angle from vertical



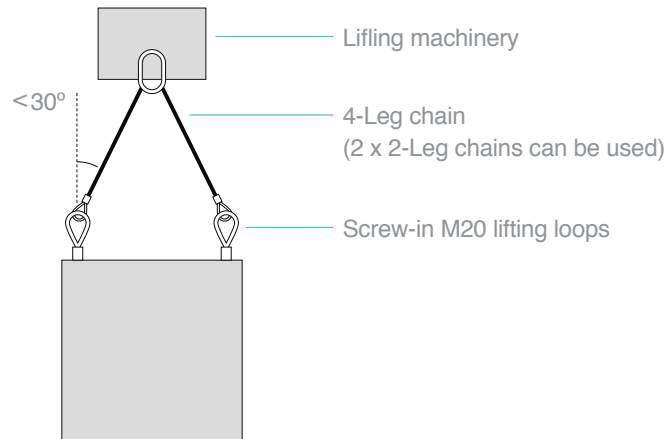
These handling instructions are for guidance purposes only and a full site risk assessment and method statement should be undertaken by the client..

- 1 Unless otherwise agreed your ballast blocks will arrive on the back of an artic lorry (flatbed or curtain sider). If you need a flatbed then please make sure you specify this when confirming the order.
- 2 Your ballast blocks will be supplied with 1 no lifting loop. These screw into the top of the ballast block.
- 3 You will need chains or straps that have been checked and are suitable to lift the required weight.
- 4 The lifting loops need to be fully screwed into the sockets on the top of the ballast blocks.
- 5 Chains or straps need to be put through the lifting loops, and then attached to a suitable piece of machinery - generally a forklift or telehandler.
- 6 Please ensure the lifting loops are lifting at 30 degrees from vertical or less.
- 7 **AT NO TIME SHOULD ANY PERSON GO UNDER THE BLOCKS WHILE THEY ARE IN THE AIR.**



HANDLING INSTRUCTIONS FOR 2400KG BALLAST BLOCKS

Lifting chains must be no more than 30° angle from verticle



These handling instructions are for guidance purposes only and a full site risk assessment and method statement should be undertaken by the client..

- 1 Unless otherwise agreed your ballast blocks will arrive on the back of an artic lorry (flatbed or curtain sider). If you need a flatbed then please make sure you specify this when confirming the order.
- 2 Your ballast blocks will be supplied with x4 M20 Lifting Loops. These screw into the cast-in threads on the top face of the block.
- 3 You will need 4-Leg chains or straps with the necessary lifting capacity. (if you need these provided we can do so at cost).
- 4 The lifting loops need to be fully screwed into the sockets on the top of the ballast blocks.
- 5 Chains or straps need to be put through the lifting loops, and then attached to a suitable piece of machinery - generally a forklift or telehandler.
- 6 Please ensure the lifting loops are lifting at 30 degrees from vertical or less.
- 7 **AT NO TIME SHOULD ANY PERSON GO UNDER THE BLOCKS WHILE THEY ARE IN THE AIR.**

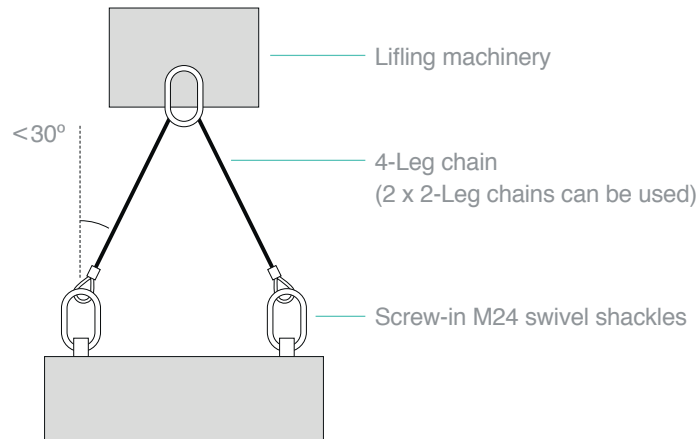




JPCONCRETE

HANDLING INSTRUCTIONS FOR 5760KG BALLAST BLOCKS

Lifting chains must be no more than 30° angle from vertical



These handling instructions are for guidance purposes only and a full site risk assessment and method statement should be undertaken by the client..

- 1 Unless otherwise agreed your ballast blocks will arrive on the back of an artic lorry (flatbed or curtain sider). If you need a flatbed then please make sure you specify this when confirming the order.
- 2 Your ballast blocks will be supplied with x4 M24 swivel shackles. These screw into the cast-in threads on the top face of the block.
- 3 You will need 4-Leg chains or straps with the necessary lifting capacity. (if you need these provided we can do so at cost).
- 4 The swivel shackles need to be fully screwed into the sockets on the top of the ballast blocks.
- 5 Chains or straps need to be put through the M24 swivel shackles, and then attached to a suitable piece of machinery - generally a forklift or telehandler.
- 6 Please ensure the lifting loops are lifting at 30 degrees from vertical or less.
- 7 AT NO TIME SHOULD ANY PERSON GO UNDER THE BLOCKS WHILE THEY ARE IN THE AIR.

