



205 SERIES

DIGILINK - "UNDERHOOK WEIGHING"

Designed and built to meet demanding applications in the workshop, factory or field.

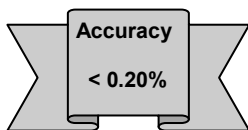
Rugged lightweight alloy construction - 12 tonne link weighs only 1.9kg

- Standard range 5 to 150 tonne
- Shackle units to 500 tonne
- Accuracy < 0.20%
- Supplied with all you need to do the job
- Simple & Easy to use
- Clear easy to read calculator style remote control
- Hold function for peak load
- Tare function
- Display selectable for pounds or kilograms
- Programmable hand held unit
- Long life rechargeable NiCad batteries complete with charger
- Low battery warning & automatic power-down
- Housed and protected in a practical tough waterproof case
- Wireless version 210 Series available
- Designed for use with standard lifting shackles

***Up to 100tonne**

Portable weighing for: -

- ◆ Load testing
- ◆ General loading
- ◆ Checking test weights
- ◆ Bollard pull testing
- ◆ Winch testing



RELIABILITY

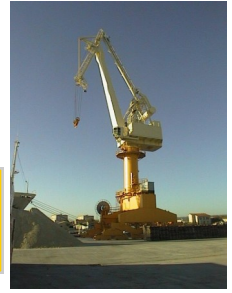
DESIGNED & MANUFACTURED BY...

VERSATILITY

LOADWISE INTERNATIONAL LIMITED

SIMPLICITY

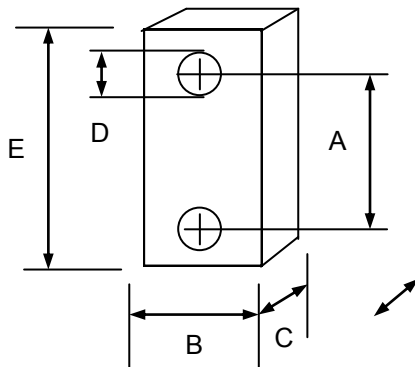




LEADERS IN INSTRUMENTATION AND ANCILLARY EQUIPMENT FOR THE LIFTING INDUSTRY

The *Loadwise Digilink* is a precision strain-gauged load cell constructed from high strength aluminium with an anodised finish to provide corrosion protection. Combining high quality, accuracy and reliability in a compact low weight unit. All the electronics are contained within the hand-held display controller, which includes a leather carry case and shoulder / hand straps. The unit is supplied with a third party test certificate; *Loadwise* recommend that units are checked for accuracy annually and offer a calibration service. The *Digilink* is self programmable for calibration under controlled conditions.

Dimensions and weights for standard models



Shackles to 500 tonne

Capacity	A	B	C	øD	E	WEIGHT (kg)
Up to 5 tonne	108	105	40	30	164	1.4
12 tonne	120	105	40	38	210	1.9
25 tonne	131	125	55	53	255	4.0
35 tonne	147	135	55	60	305	5.0
50 tonne	170	150	75	73	345	9.0
100 tonne	228	220	123	100	455	27.0
150 tonne	258	260	123	120	520	40.0
200 tonne	295	290	159	135	630	65.0

250 & 500 tonne *Digilinks* are available on application

TECHNICAL SPECIFICATION

Display: LCD, 4.5 x 6mm digits, Dimensions: 150mm x 83mm x 35mm, Weight: 0.40kg
 Temperature range: -10°C to +60°C
 Proof load: 150% of maximum rated load (M.R.L.)
 Ultimate overload: 500% (M.R.L.)
 Accuracy: 0.20% Full scale deflection (F.S.D.)
 Hysteresis: < 0.1% of rated output (R.A.)
 Non-Linerarity: <0.1% R.A.
 Sensitivity: 1.5mV/V
 Excitation: 10VDC
 Power supply: NICAD rechargeable batteries giving 10 hours continuous use, with automatic power down to conserve battery.
 Environmental protection: IP66
 Controls: On/Off, Tare, Hold & Units
 Connections: 6 pin bayonet lock connector (MIL-C-26482-10-6P)

Presented by: