



# PB9000

1GbE, PoE, KVM, Central Management  
4K Video Distribution



# Features

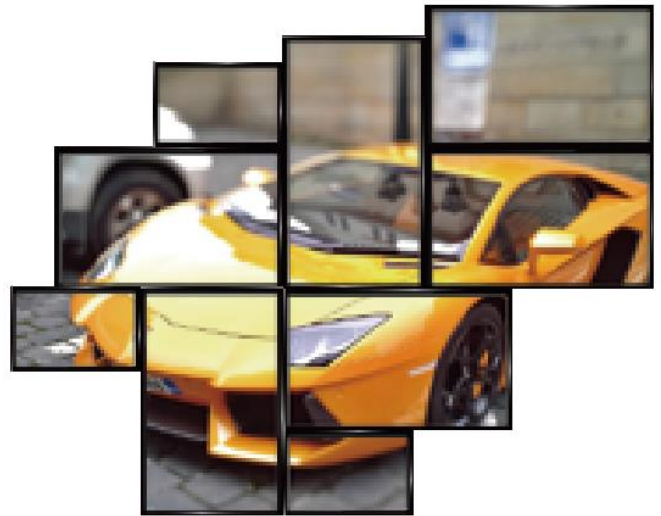
## Videowalls

Supports up to 9 x 9 screens

Asymmetric or symmetric screen arrangements for unique installations

Up to 4K resolution supported

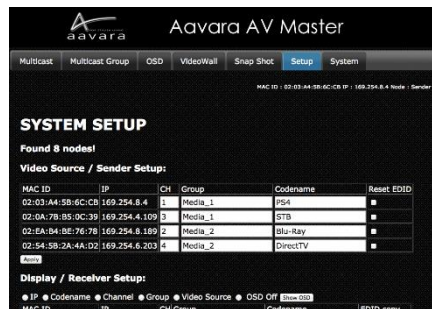
Easy web interface configuration



## Central Device Management



Endpoint management, auto-searches for active devices



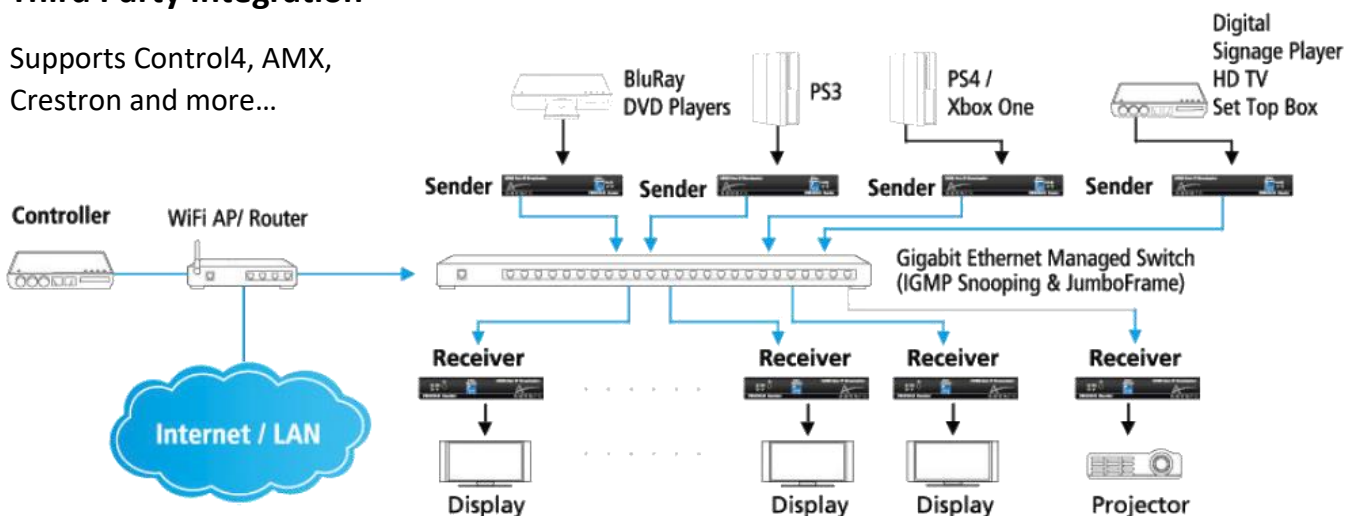
Configure multicast groups using easy-to-use web interface



Videowall configuration

## Third Party Integration

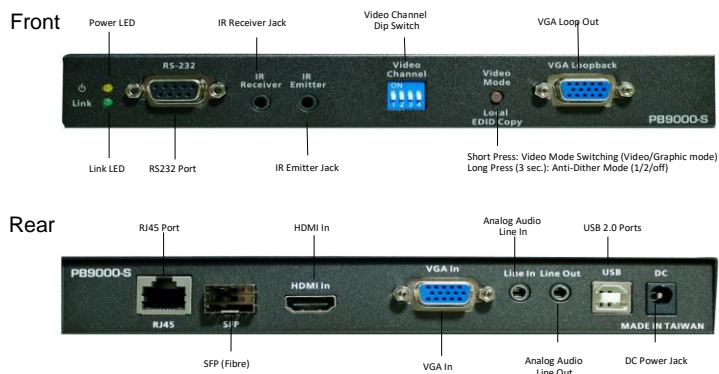
Supports Control4, AMX, Crestron and more...



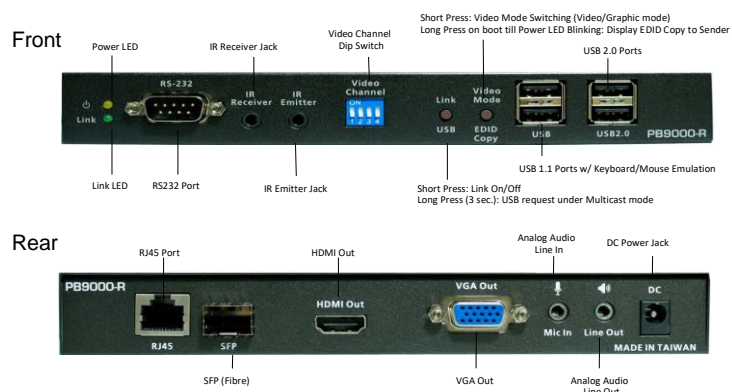
# Specifications

IP Network		
Connection topology	1-to-1, 1-to-many, many-to-1, many-to-many	
Connection type	RJ-45 Cat-5 and SFP Fibre	
Switch requirements	1GB Managed Ethernet / Fibre Switch (with IGMP & 8K Jumbo Frame)	
Point-to-point (Max distance)	UTP: 120 metres; Fibre: Kilometres (varies per GBIC / SFP module)	
PoE support	PoE IEEE 802.3af	
Bandwidth (bit rates)	10 Mbps – 800 Mbps (User selectable)	
Video		
Video interfaces	Sender	Input: HDMI (Supports DVI), VGA. Output: VGA loop out. HDCP 2.2
	Receiver	Output: HDMI (Supports DVI), VGA
Max supported video resolutions	Progressive	HDMI: 2160p/60Hz (YUV 4:2:0) in, 2160p/30Hz out DVI: 1920x1200p/60Hz. VGA: 1920x1080p/60Hz
	Interlace	1080i/60Hz, 480i/60Hz
Latency	2160p up to 30Hz: 33m/s; 1080p up to 60Hz: 16m/s; 720p up to 60Hz: 16m/s. Equal to 1 frame in most circumstances	
Video scaling	Built-in scaler to downscale or upscale resolutions	
3D HDMI support	Yes, uses HDMI 2.0. 3D: TnB, SbS, F.P	
EDID Management	Fully manageable, copy and customise for compatibility	
Audio		
Digital pass-thru (HDMI)	Up to 8 channels LPCM (Uncompressed), Dolby TrueHD, ATMOS, DTS-HD	
Analog pass-thru (3.5mm jack)	Sender to receiver; Receiver to sender (Unicast mode only)	
Audio extraction	HDMI input (2 Ch LPCM (32KHz-96KHz) to analog output	
Audio embedder	HDMI & Analog audio input, output HDMI video and audio out	
Control		
USB	Sender: 1x USB 2.0 Type B. Receiver: 2x USB 2.0 Type A, 2x USB 1.1 Type A. HID emulation	
RS-232	Pass-thru (between sender and receiver), IP commands (300-115200bps)	
Infrared	Sender to receiver; receiver to sender	
Videowall		
Max screens	9 x 9 matrix via web or IP command control	
Image control	Rotate: 0°, 90°, 180°, 270°. Horizontal, vertical flip. Video stretch, mirroring	
Scaling	4K video input, receiver able to downscale to 1080p video output	
Arrangements	Asymmetric and symmetric arrangements supported	

## Sender



## Receiver



If you have any questions, contact us at [sales@tukans.com](mailto:sales@tukans.com) or on 01904 720617