



Model SSM-3 with control panel

AUTOMATIC, CONSISTENT IN-LINE SCRAP REPROCESSING

The ScrapSaver volumetrically feeds ground light density film scrap to the extruder feed screw in a stable, consistent flow. Conair trim systems handle all kinds of film and sheet waste and return it directly to the extruder at rates of 25% or more.

Direct in-line reprocessing of scrap material eliminates scrap handling costs and the risk of cross-contamination. Scrap inventory and labor expenses are significantly reduced and additional heat histories associated with secondary re-pelletizing or densifying operations are eliminated.

DIRECT CLOSED-LOOP RECLAIM INCREASES PROFITS

The ScrapSaver delivers a consistent ratio of ground scrap and virgin pellets. Two hoppers maintain component segregation until discharge approximately 1/2 - 1 inch {12-25 mm} above the screw flights. An agitator auger in the fluff hopper ensures reliable feeding of the scrap, while the virgin pellets are gravity fed. To optimize scrap re-feed rates and protect process stability, pellets enter the flights in an annular ring surrounding the fluff. This creates a consistent flight-to-flight mix ratio and provides a steady, and consistent flow of material.

Four different auger sizes are available to match extruder sizes up to eight (8) inch {200 mm}. Scrap re-feed rates are typically up to 25% of overall extruder throughput, but higher rates may be possible depending on the extruder feed section, screw design and the end-product being extruded.

■ Long life motor and gearboxes

The vertical scrap auger is driven with a reliable AC inverter motor. The drive system comes equipped with multi-level current overload protection with alarm status to protect against premature drive and gearbox failure.

■ Won't overfeed or underfeed the process

The ScrapSaver follows any change in the extruder throughput rate. The following circuit provides consistent feed, avoids "cramming" the flights and eliminates related extruder surging. A low speed cut-out and an internal level sensor with delay timer controls the scrap granulator roll feed to prevent overfeeding.

■ Agitation prevents bridging

Agitator arms on the auger are designed to prevent bridging in the ScrapSaver machine and keep a consistent flow of ground scrap into the extruder.

■ Inexpensive operation

Automated system virtually eliminates operator involvement and scrap handling costs.

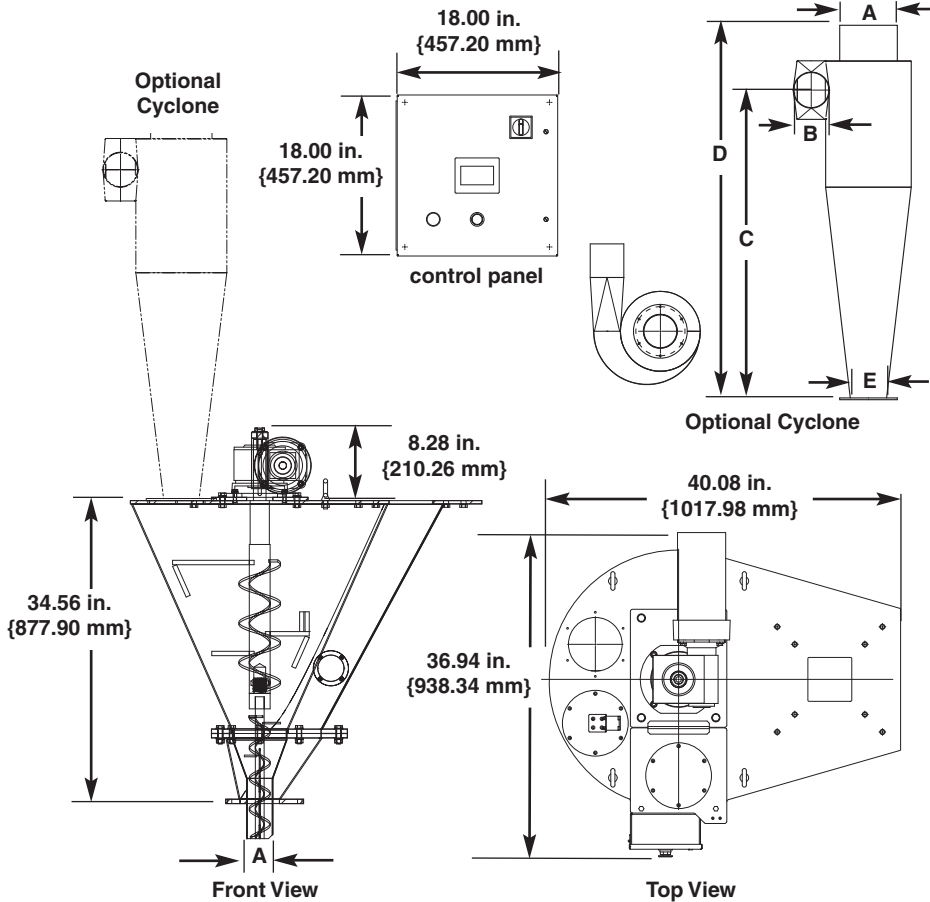
■ Additive feeder side mount

A replaceable sight glass accommodates TrueFeed and other additive feeders for direct input to the ScrapSaver pellet feed chute.



SPECIFICATIONS

SCRAPSAVER™ SSM MODELS 2-5



FEATURES

- Remote mounted touch screen operator interface displays motor load and speed
- Current overload protection with alarm
- Control panel: 18 inches {457.2 mm} wide x 18.3 inches {464.82 mm} high x 8 inches {203.2 mm} deep
- NEMA 12 enclosure
- Variable speed AC drive
- Extruder screw following circuit
- Internal level indicator
- Scrap chamber bridge breaker
- Mild steel material contact surfaces
- Custom designed machine mount flange
- Virgin pellet and scrap view ports
- Virgin pellet drain
- Safety interlocks

OPTIONS

- High efficiency cyclone with optional filter
- Pellet inlet adapter
- Additive feeder port
- Diverter valve (feeds two ScrapSaver™ machines from a single source)

SPECIFICATION NOTES:

Specifications may change without notice. Consult a Conair representative for the most current information.

MODEL	SSM-2	SSM-3	SSM-4	SSM-5
Performance Characteristics				
A - Auger tube size at outlet inches {mm}	1.5 {38.1}	2.5 {63.5}	3.5 {88.9}	4.5 {114.3}
Maximum scrap rate ft ³ /hr {l/hr}	10 {283}	30 {850}	75 {2124}	150 {4248}
Minimum extruder sizes inches {mm}	2.0 {50.8}	3.0 {76.2}	4.0 {101.6}	5.0 {127}
Capacity ft³ {l}				
Virgin chamber	0.5 {14}	0.5 {14}	0.5 {14}	0.5 {14}
Scrap chamber	2.5 {70}	2.5 {70}	2.5 {70}	2.5 {70}
Auger motor Hp {kW}	1.5 {1.12}	1.5 {1.12}	1.5 {1.12}	1.5 {1.12}
Approximate Weight lb {kg}				
Shipping	600 {272}	600 {272}	600 {272}	600 {272}
Voltage Total amps				
400V/3 phase/50 Hz			3.3	
460V/3 phase/60 Hz			3.1	

Optional Cyclone

MODEL	CYC-4	CYC-5	CYC-6	CYC-8
Performance Characteristics				
Dimensions inches {mm}				
A - Exhaust outlet	7 {177.8}	8 {203.2}	10 {254}	14 {355.6}
B - Inlet	4 {101.6}	5 {127.0}	6 {152.4}	8 {203.2}
C - Inlet height	37.25 {946.2}	43 {1092.2}	53 {1346.2}	79.5 {2019.3}
D - Overall height	46.25 {1174.75}	52 {1320.8}	63 {1600.2}	91.5 {2324.1}
E - Material outlet	4.0 {101.6}	5.0 {127.0}	5.5 {139.7}	6.0 {152.4}
Maximum CFM rating	375	500	850	1600
Use with blower	FB-1	FB-1.5	FB-3	FB-7.5

