

**control
water
solutions**



**Effective Water
Treatment Solutions for
the Industrial Market**



CONTROL WATER SOLUTIONS PROVIDE PRODUCTS AND SERVICES TO WATER TREATMENT INDUSTRY ORGANISATIONS WHETHER THEY BE LARGE CHEMICAL SUPPLIERS THAT REQUIRE A MEANS OF MONITORING AND DOSING THEIR CHEMICALS OR MAINTENANCE COMPANIES INSTALLING AND MAINTAINING WATER TREATMENT APPLICATIONS.

> Company

Established in 2008 we have quickly become the supplier of choice for many water treatment companies throughout UK & Europe. Our systems are at work 24 hours a day, 365 days a year, helping to keep industry moving and improving the control of your process water treatment application. Although our main focus previously has been focused around cooling water/cooling tower applications we can also provide equipment & services for many other dosing applications.

> Quality

Our equipment is manufactured to meet stringent guidelines using the very latest technology and the most durable materials. Our experienced design team and fully equipped test facilities ensure that our equipment is among the most reliable and robust you can find.

> Service & Support

Customers benefit from the highest possible levels of service & support throughout the life of our products. We believe the support we offer is as important as the equipment we provide. This includes a full after sales service, product testing, commissioning and either on-site or in-house repair.

“Our goal is to offer customers the most effective solution in products & support .”

> Products

Control Water Solutions can offer a comprehensive range of equipment products for many different industrial water applications, a major part of which is dedicated to the treatment of evaporative cooling towers, chillers, steam boilers and other process water applications.

The types or groups of companies in our customer base therefore include,

- Chemical suppliers
- Water treatment installation and maintenance companies
- Swimming pool installation and maintenance companies
- Engineering companies that do boiler installation and maintenance
- Commercial plant & fruit growers that dose nutrients into irrigation water
- Poultry farmers that require chemical dosing into poultry drinking water
- Any other company that is involved with chemical dosing in any way.

If this is you then feel free to give us a call to discuss your requirements...



> Products

Get the best solution with our range of user friendly controllers that offer reliable yet cost effective control whatever your industrial water treatment application. With an ATM style programming menu & large LCD graphic display program setup is simple & intuitive.

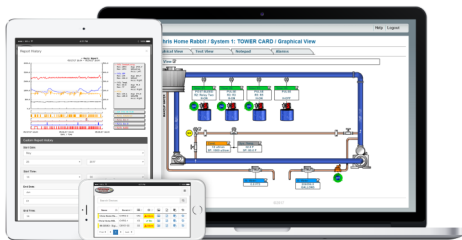
COOLING TOWER & BOILER CONTROL DOSING SYSTEMS

MEGATRON RANGE

The *MegaTron* range of controllers have been specifically designed to maintain & control the correct water chemistry in evaporative cooling towers & boilers. Conductivity bleed maintains the correct solids/TDS level whilst selectable feed timers control scale build up and bacteria growth. Available for use on either a single or multiple systems, each can be configured quickly & easily to suit your particular application.

Monitoring & control options include

- Conductivity
- Make up Conductivity
- pH & ORP
- Temperature
- Inhibitor feed on timed or proportion basis
- Timed feed of biocides
- Digital Inputs



REMOTE MONITORING

With *WebAdvantage* communications package you are able to monitor and control your controller from any computer that has access to the internet. You can also view history graphs, get data logs and create custom reports whilst email alerts keep you informed of any alarm conditions.

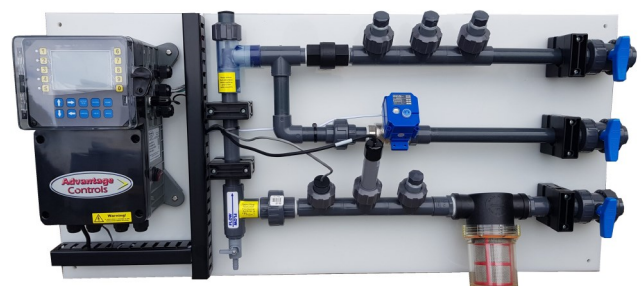


WebAdvantage3

CUSTOMISED WALL MOUNTED DOSING PACKAGES

CONTROLLER MOUNT BOARDS

Controller mount boards are a simple & cost effective way to make installation on site easy. The controller is mounted onto a polypropylene board including electrodes, flow switch assembly & a sample manifold which includes quick release type injection tees, inline basket strainer, non-return valve and isolation valves.



PROCESS WATER CONTROL SOLUTIONS

Precise Analysis & Control of

- pH
- Chlorine
- Bromine
- Chlorine Dioxide
- Hydrogen Peroxide
- Peracetic Acid
- Ozone



INSTRUMENTS & ANALYSERS

A range of Multifunction controllers which have been developed as a high performance instrument employing sophisticated technology to measure a wide range of different parameters.



Features

- Microprocessor Control with LCD display
- Available in single or dual channel versions
- Selectable control modes
 - Pulse Frequency (PFM)
 - Pulse Width (PWM)
 - Pulse Interval (PI & PID)
- IP65 Rating

AMPEROMETRIC SENSORS & ELECTRODES



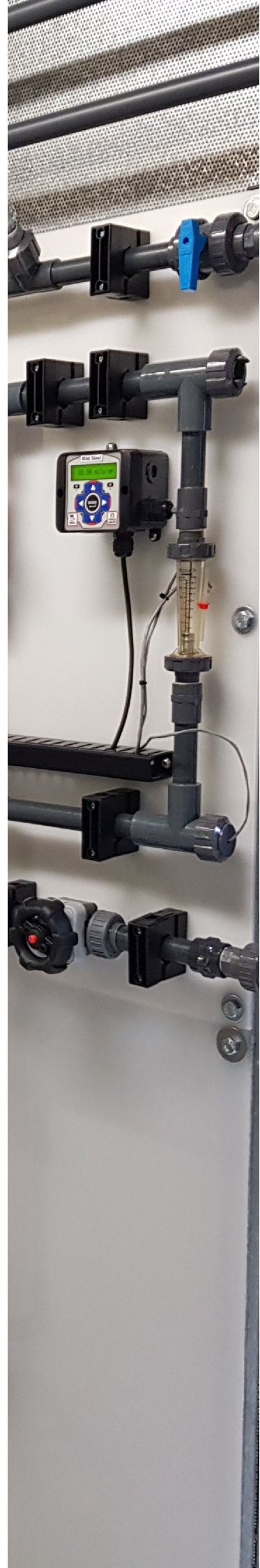
Features

- Long Life
- Quick measurement response
- No zero calibration required
- Low impedance so long cable runs can be used
- Temperature compensation included
- Low operating costs

CHLORINE DIOXIDE GENERATORS

Chlorine Dioxide is a powerful oxidizing agent excellent for disinfection control. Ideal applications for Chlorine Dioxide are wide and include combatting legionella in building installations and disinfection of small cooling water systems.

We can supply a range of different direct injection units capable of producing rates of 8g/h to 400g/h.



CHEMICAL DOSING PUMPS

EziDOS Solenoid Driven Metering Pumps

The EziDOS range of chemical metering pumps are available in either vertical or horizontal mount version with a choice of control methods making them suitable for use in a wide range of applications. Outputs range from 1L/Hr to 100L/Hr with pressures from 0 Bar to 20 Bar.

Features

- Wall & Foot Mount options
- Manual, pulse or mA input control
- Level switch to indicate empty status
- Flow monitoring with alarms
- Wetted materials, PVDF, PTFE, Viton, EPDM
- Ceramic Double Ball Valves
- De-gassing heads for Chlorine based chemicals
- Multifunction back pressure & relief valves
- Metric Connections



Peristaltic Pumps

- Fixed and Variable speed types
- Single/Dual channel timer versions

Motor Driven Metering Pumps

- High Flow/pressure combinations
- Direct Diaphragm or Piston Diaphragm



ACCESSORIES

We provide a comprehensive range of accessories as well as a full range of spare in case of breakdown which can be despatched quickly via our fast track delivery service

Accessories include

- Chemical Tanks & Bunds
- Water Meters
- Motorised Bleed Valves
- Brominators
- Solid Feed Systems
- Corrosion Coupon Racks



Effective Solutions For Water Treatment ...



**control
water
solutions**



Control Water Solutions are part of the Control Water Group, where our vision is simple, to be the market leading provider of process water treatment equipment and solutions by using the latest technology all backed up by credible expertise and unrivalled service and support.

10
CELEBRATING
YEARS

 **UK Office:**

Unit 10, The Towers
Foley Business Park
Foley Avenue
Kidderminster
Worcestershire
DY11 7QL
United Kingdom

Tel: +44(0)1562 743656

info@controlwatersolutions.co.uk
www.controlwatersolutions.co.uk