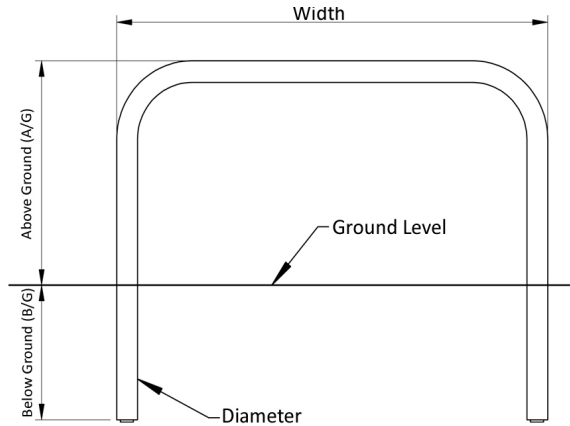




Hooped Perimeter Barrier 48mm Diameter Galvanised, Concrete In

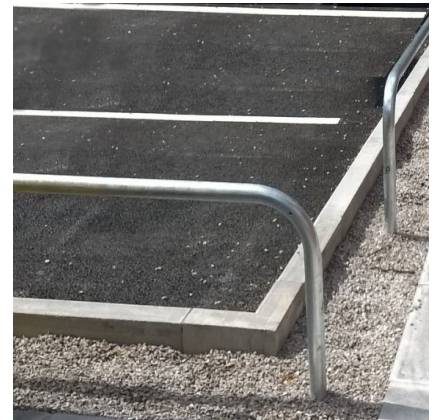


Perimeter Barriers are designed to help secure site perimeters and provide a permanent obstacle to vehicle access, to mark boundaries, define trolley parks and protect vulnerable door entrances and exits.

Suited to sites where aesthetics and security are equally important, perimeter barriers are commonly found outside car showrooms acting as protection for the cars on the forecourt without impeding a customer's view of the vehicles.

Available in a variety of heights and widths, available as concrete in, bolt down or removable for occasional access.

Available as galvanised as standard. Stainless steel, galvanised and colour coated available extra.



Part Number	Description, Height above ground x overall width	Weight (kg)
138 174 828	500 x 500 Galvanised - Concrete In	5kg
138 174 830	500 x 1000 Galvanised - Concrete In	7kg
138 174 834	500 x 1500 Galvanised - Concrete In	9kg
138 174 833	500 x 2000 Galvanised - Concrete In	11kg
138 174 851	750 x 1000 Galvanised - Concrete In	9kg
138 174 857	750 x 1500 Galvanised - Concrete In	11kg
138 174 863	750 x 2000 Galvanised - Concrete In	12kg
138 174 865	1000 x 1000 Galvanised - Concrete In	11kg
138 174 873	1000 x 1500 Galvanised - Concrete In	12kg
138 174 880	1000 x 2000 Galvanised - Concrete In	14kg

Product details

- 3mm wall thickness
- Concrete in 300mm (below ground)
- Colour coated options available extra

Installation & use

Bolt down to a suitable concrete surface.
Telescopic, removable and concrete in are supplied with welded fixing spikes to ensure firm ground anchorage into concrete.
Telescopic, removable and concrete in require a suitable excavated hole for installing into concrete.
Products are guaranteed for 12 months (if installed and used correctly).



www.autopa.co.uk
+44 (0)1788 550556

AUTOPA Limited
Cottage Leap, Rugby, Warwickshire CV21 3XP

