



SUNCOMBE

CIP, BIOWASTE & PROCESS SOLUTIONS

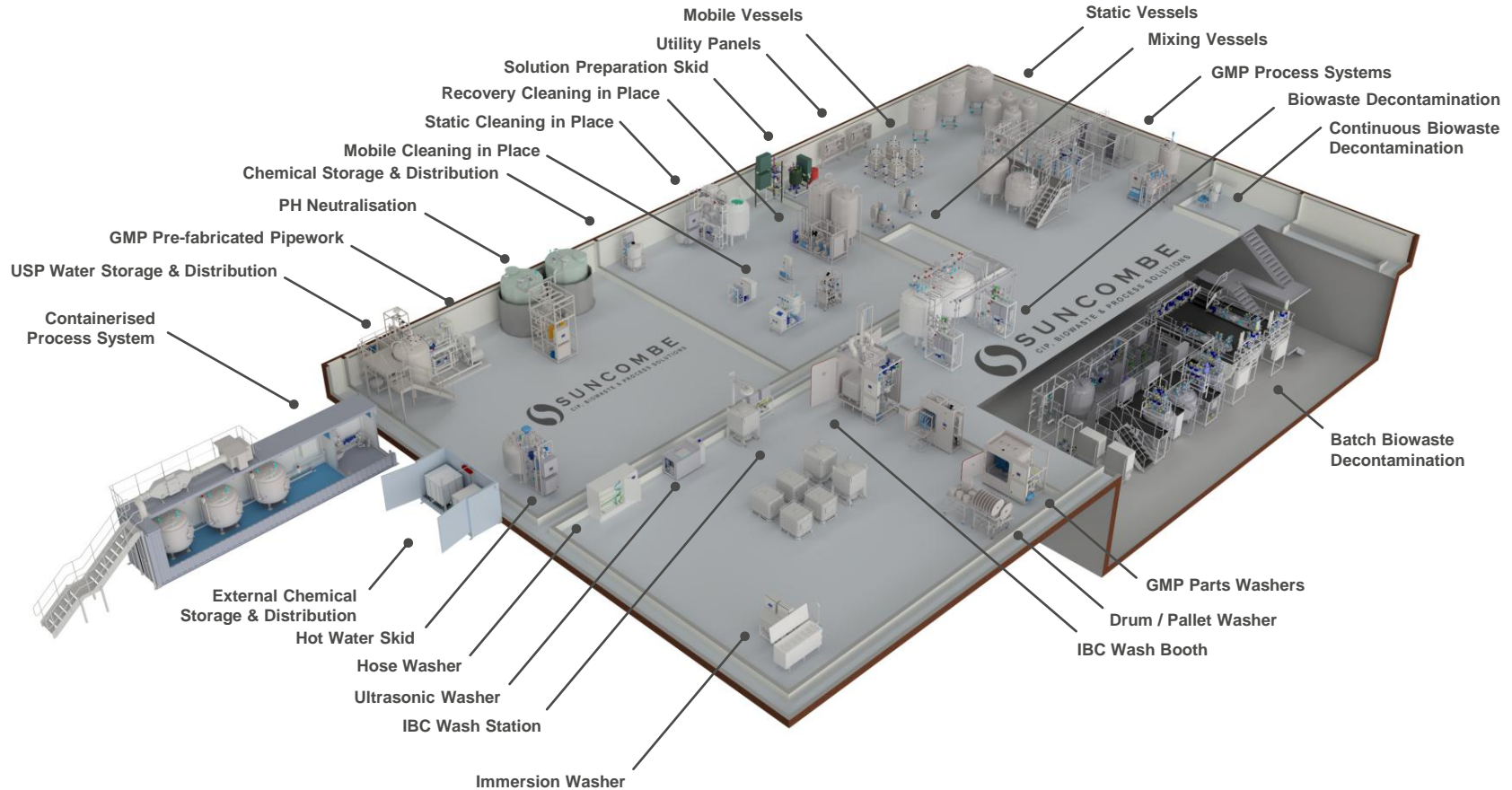
MobileCIP™



Suncombe Ltd, Jade House, Lockfield Avenue, Brimsdown, Enfield, Middlesex, EN37JY, United Kingdom

T +44(0)20-8443-3454 F +44(0)20-8443-3969 E info@suncombe.com W www.suncombe.com

www.suncombe.com



Product Portfolio

MobileCIP™ Introduction

The MobileCIP™ is a Total Loss Cleaning In Place system supplied worldwide to the BioPharm, Healthcare, Cosmetics, Personal Care, Food, Dairy, Beverage and other Processing Industries. Designed and developed to be mobile to allow the entire system to be moved to its point of use. Manual or automatically operated, the systems can be used for cleaning Tanks, Vessels, Vats, Fermenters, Mixers, Processors, Pipework, Valves, Isolators, Mills, Coaters, Filters, Pumps, Dryers and Fillers.

CIP Liquid Storage

Incorporating a 316L Stainless steel sanitary CIP storage vessel for storing, batching and delivering CIP fluids. Complete with control and safety instrumentation.

CIP Delivery

Incorporating a 316L Stainless steel variable speed pump the system can be tuned to your equipment, ensuring that the optimum CIP parameters are achieved every time whilst minimising liquid and energy usage and time.

Detergent Dosing

One to four liquid dosing systems, which can be incorporated within any recipe step at any concentration, complete with dosing safeguards including low detergent confirmation and detergent dosed volume confirmation, as well as pump priming facilities.

Validation/ Documentation

The lifecycle approach is adopted (DQ, FAT, SAT, IQ & OQ) with validation being key to every stage of the development process, including Factory Acceptance Testing (FAT), SAT and Qualification.

Example Uses

- » Cleaning in Zoned Areas
- » Cleaning in Separated areas
- » Cleaning Development
- » Trials
- » Periodic Cleaning
- » Batch Cleaning
- » CIP Familiarisation
- » Laboratory & Pilot Plant CIP

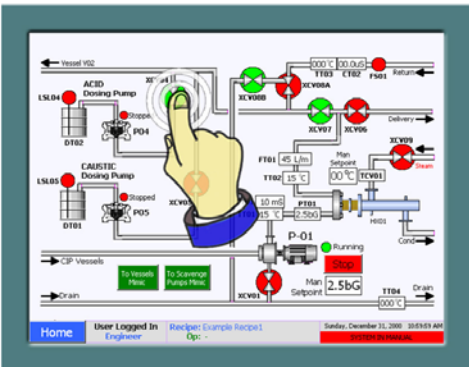
Automation System

The Integrated CIPSuite™ automation packages are designed to be operator friendly and simple to use whilst providing flexibility and optimisation. Reliable and robust, they have been developed over the last 10 years in co-ordination with clients operations staff, engineers and validation staff. They encompass all elements required to provide a controllable, repeatable automatic system.

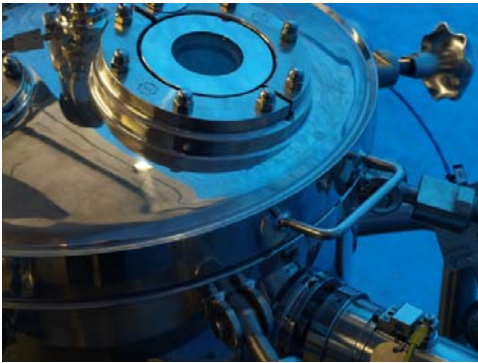
A range of automation levels are available, starting from low level semi-automated systems, through low and mid level PLC and HMI versions, to advanced SCADA based systems. All levels are designed with the facilities required to provide a repeatable automated cycle.



Level 1000 Basic System



Level 3000 Advanced System



Pressure Vessel

Sanitary designed 316L stainless steel pressure vessel, Typically designed to PD5500, BS EN 13445 or ASME VIII intent.



Manufacturing Standards

- 316 stainless steel product contact parts, 304 non-contact parts, Hastelloy and Duplex Stainless
- ASME BPE, 3A, cGMP standards, fully drainable, crevice free.
- Enclosed head orbital welding to EN287/15614
- T.I.G. Welding; using an argon gas purge, using a computer controlled enclosed head orbital welding plant, carried out by technicians coded to EN 287, to Suncombe procedures coded to EN ISO 15609, tested to EN ISO 15614 Part 1.
- ASME BPE standard Pipework, fully annealed, chemistry to ASTM A-269, manufactured to ASTM A -270, and 3A Standard.

CIPSuite™ 2 to 4 Versatile Recipe Control

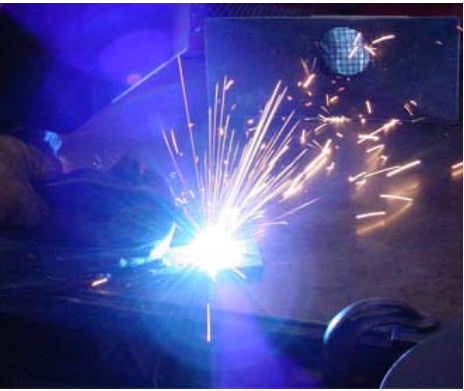
Build your own recipe/operational method from sequences, including:

- Flush to drain
- Pre-rinse
- Chemical make-up
- Recirculation Cleaning
- Single Pass Cleaning
- Final rinse
- Drain
- Air Purge
- Self CIP



Key Features

- 316L Stainless steel wetted parts and 316/304 stainless steel non-wetted parts
- Sloping design and smooth, crevice-free construction
- EPDM, PTFE FDA-approved elastomers
- Atmospheric vents or heated vent filter options
- BioPharma Diaphragm valves and instrumentation
- Certified surface finishes to 0.4 ra and optionally electropolished
- Fully self-draining including pump housing
- High power electrical liquid heating for fast heatup times
- One to four liquid dosing systems including dosing confirmation
- Fully adjustable cycle parameters including temperatures, pressures and times
- Available with Conductivity controllers for detergent concentration and pure water.
- Easy maintenance
- Two fixed and two swivel non-marking castors
- Can be fitted with stainless steel covers
- ATEX versions available for solvent use and/or aqueous use in zoned areas



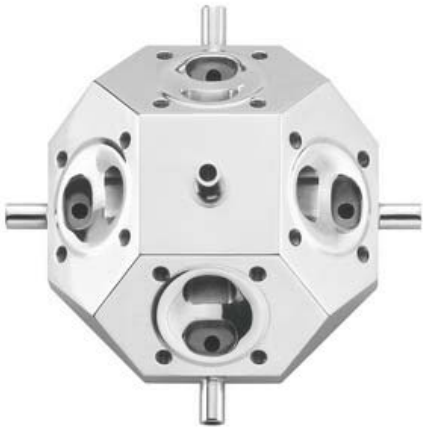
Instrumentation

High quality analytical and process instrumentation.



Process Valves

Sanitary and sterile process routing valves providing mixproof, dead leg free routing.



Filter Housings

Single or multi-element sanitary housings with heaters and 0.2 µm filters from 316L stainless steel, Hastelloy and Duplex Stainless

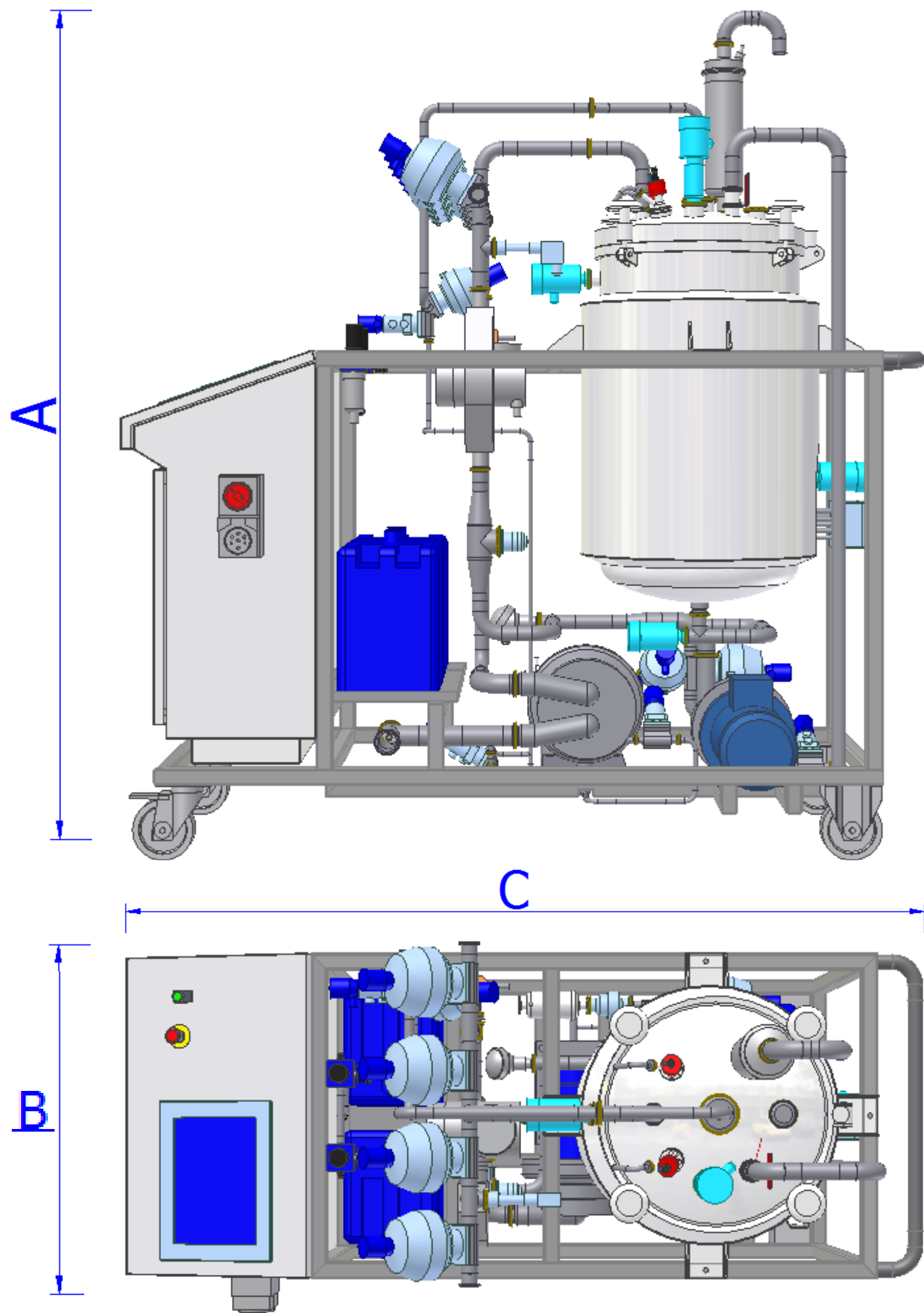


Sanitary Pump

In built Sanitary Centrifugal feed and liquid ring return pumps

ASME BPE Pipework and Triclamp Fittings





Part #	Tank Volume Litres	Flowrate litres per minute	Head Pressure barg	Dimensions mm		
				A	B	C
MobileCIP™60 - 1 Tank	150	60	4.5	1,750	850	1,900
MobileCIP™60 - 2 Tank	2 x 150	60	4.5	1,750	850	2,350
MobileCIP™60 - 2 Tank – square	2 x 150	60	4.5	1,750	1,400	1,400
MobileCIP™100 - 1 Tank	250	100	4.5	1,950	1,050	2,050
MobileCIP™100 - 2 Tank	2 x 250	100	4.5	1,950	1,050	2,550
MobileCIP™150 - 1 Tank	350	150	4.5	1,950	1,050	2,250
MobileCIP™150 - 2 Tank	2 x 350	150	4.5	1,950	1,050	2,850