



**SUNCOMBE**  
CIP, BIOWASTE & PROCESS SOLUTIONS

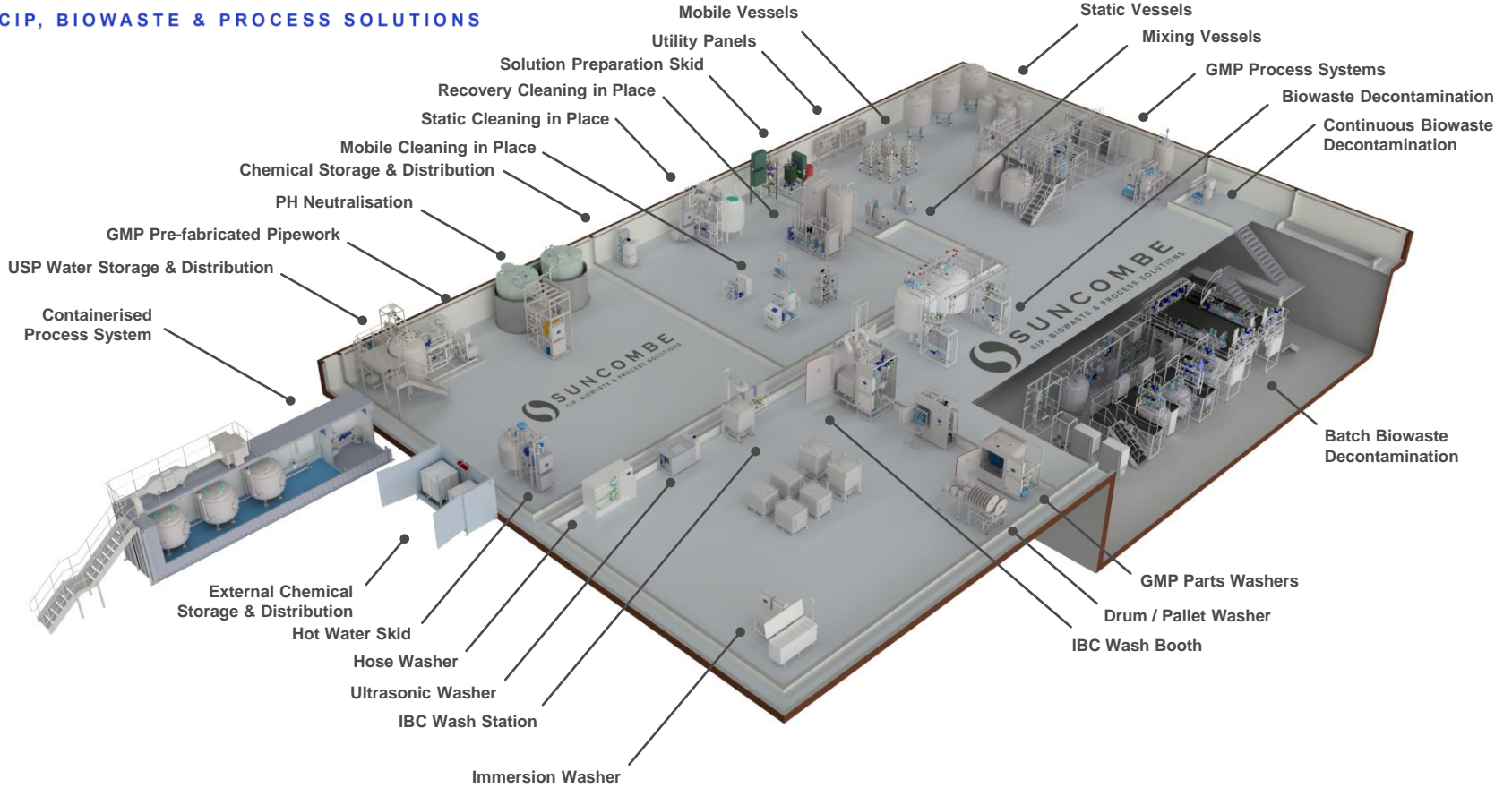
# SteriWasher™



Suncombe Ltd, Jade House, Lockfield Avenue, Brimsdown, Enfield, Middlesex, EN37JY, United Kingdom

T +44(0)20-8443-3454 F +44(0)20-8443-3969 E [info@suncombe.com](mailto:info@suncombe.com) W [www.suncombe.com](http://www.suncombe.com)

[www.suncombe.com](http://www.suncombe.com)



**The SteriWasher™**

The **SteriWasher™** Parts Washer is an innovative new robust, heavy duty validateable Parts Washer, developed for use in the pharmaceutical, biotech, food, beverage, healthcare and other critical sectors. Accessed via a robust hinged door, the washing chamber is constructed from 316 stainless steel and is of hygienic construction. Employing a combination of specially developed variable duty spray technologies, the washer provides high energy impingement washing together with low energy flushing chosen by a simple recipe selection.



**Manufacturing Standards**

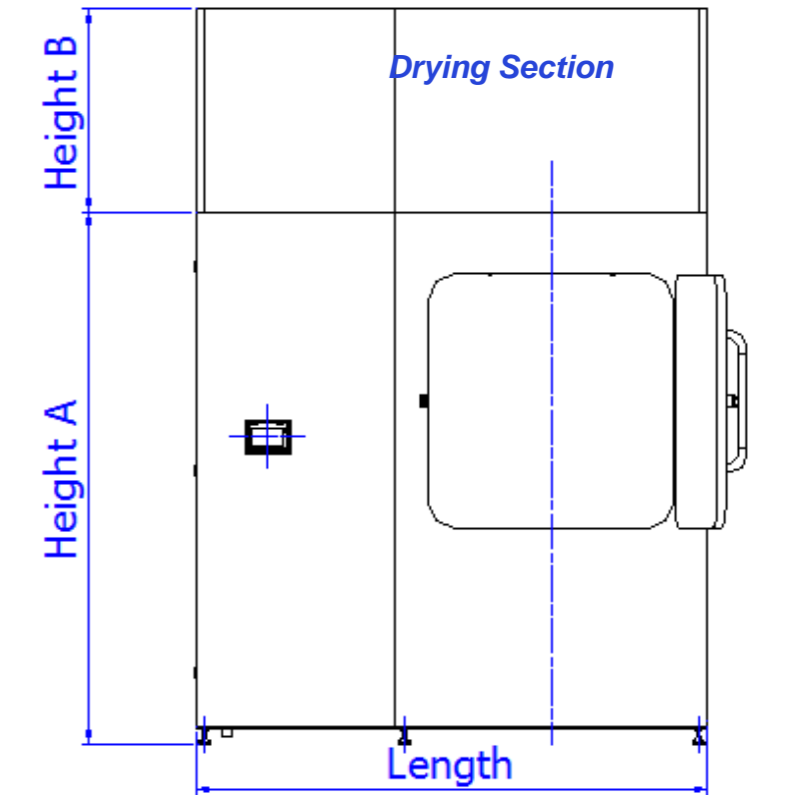
- 316 stainless steel product contact parts, 304 non-contact parts, Hastelloy and Duplex Stainless
- Option for Sanitary finish or ASME BPE finish
- T.I.G. Welding; using an argon gas purge, using a computer controlled enclosed head orbital welding plant, carried out by technicians coded to EN 287, to Suncombe procedures coded to EN ISO 15609, tested to EN ISO 15614 Part 1.
- ASME BPE, GAMP, EHEDG, 3A, cGMP standards, fully drainable, crevice free.

**Range Details**

The range is available with a number of chamber sizes starting from 0.6 m x 0.6m x 0.6m to the largest size of 1.5 m x 1.5 m x 1.5 m, with bespoke variants available with any chamber size to suit your requirements. Incorporating crevice free internals, the washers are fitted with an air tight, leakproof inflatable door seal for total product and washing containment. Incorporating standard or bespoke racks with individual locations for validated cleaning, which are removeable and can be loaded onto mobile trolleys for loading and unloading, the washers are available with a single door or two door versions for pass-through requirements. Available in single door, straight-through two door or 90 degree two door pass-through versions, the washers are built from 316 stainless steel to cGMP, EHEDG, ASME BPE and GAMP standards and can be freestanding or integrated into your facility, located in your wash area or clean rooms.

**Functionality**

The **SteriWasher™** Parts Washers utilise existing and new technologies to provide an environmentally friendly, low water and energy usage washing facility in production and research environments for equipment ranging from critical small parts and tools to large mixers, drums and containers.



**Inflatable Door Seal**



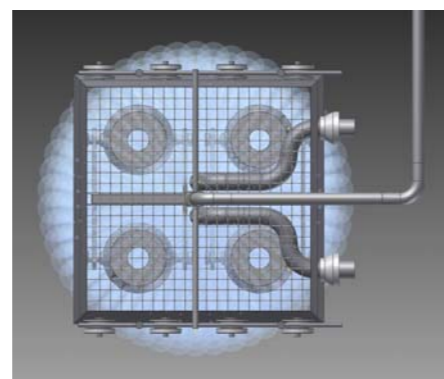
**Internal Finish**



**Automation System**

The Integrated CIPSuite™ automation packages are designed to be operator friendly and simple to use whilst providing flexibility and optimisation. Reliable and robust, they have been developed over the last 10 years in co-ordination with clients operations staff, engineers and validation staff. They encompass all elements required to provide a controllable, repeatable automatic system.

Available with 4 levels of automation systems, from Suite#1, a single recipe system, to Suite#4, a 100 recipe system with full traceability and electronically compliant reporting, the Washers intuitive operator interface includes a colour HMI with full equipment visualisation and 10 levels of password protection. Complete with self-diagnostic features, the operator interface allows configuration of the cycle steps which include up to three concentration controlled chemical washes, hot water, cold water, variable temperatures, pressures and flowrates and HEPA cooling and drying facilities.



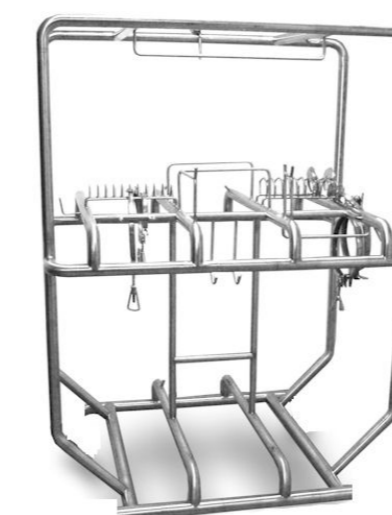
**3D Spray Modelling**



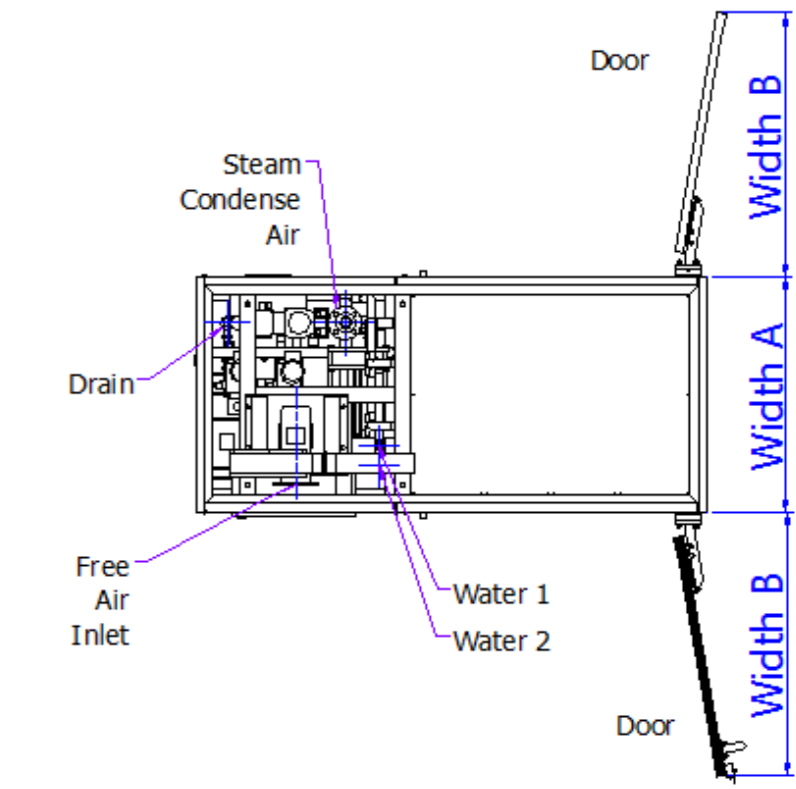
**Split Loading Rack**



**For Pallet Washing**



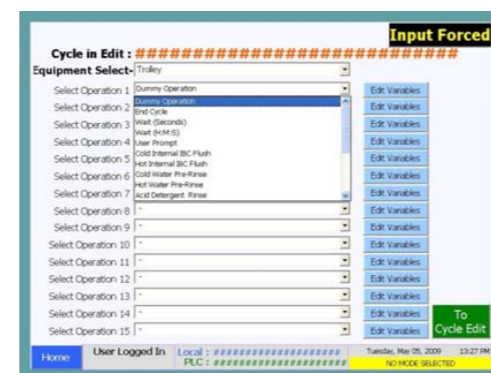
**Bespoke Washing Rack**



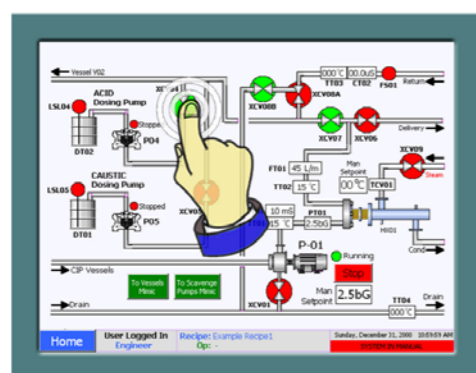
**CIPSuite™ 1 to 4 Versatile Recipe Control**

Build your own recipe/operational method from sequences, including:

- Flush to drain
- Pre-rinse
- Chemical make-up
- Recirculation Cleaning
- Single Pass Cleaning
- Final rinse
- Drain
- Air Purge
- Self CIP



**Level 1000 Basic System**



**Level 3000 Advanced System**

Part #	Chamber Dimensions mm			External Dimensions mm				
	Width	Length	Height	Width A	Width B	Height A	Height B	Length
<b>SteriWasher™600</b>	630	630	800	830	500	1800	800	1600
<b>SteriWasher™1/600</b>	1000	630	800	1100	900	1800	800	1600
<b>SteriWasher™800</b>	800	800	970	1000	700	1800	800	1800
<b>SteriWasher™1/800</b>	1000	800	800	1100	900	1800	800	1800
<b>SteriWasher™1000</b>	1000	1000	1170	1100	900	2000	1000	2000
<b>SteriWasher™1250</b>	1250	1250	1420	1350	1100	2000	1000	2500
<b>SteriWasher™1500</b>	1500	1500	1670	1700	1200	2000	1000	2500