



## Keep cold and contaminated air outside

Due to its broad range, the EASYAIR water-supplied or electric air curtain can be used in any sort of open entrance, such as in shops, supermarkets, builder's merchants, offices and hospitals.

The air curtain is suitable for an installation height of up to 4.10 metres and is available in widths from 1.0 to 3.0 metres.

The use of a three-row heat exchanger means that the EASYAIR air curtain is energy efficient. The water-supplied air curtain is supplied as standard for a low water temperature of 80/60°C. The conversion table may be used for other water temperatures.

By using a thermostatic 3-way valve, the air outlet temperature of the air curtain can be kept constant.

Suitable for use in shops, offices, hospitals and factories.

#### Features:

- Extensive range
- Standard white finish in RAL 9010
- Simple installation
- Easy to maintain

In addition, available on request:

- EASYAIR EC with DX changer for heating and / or cooling
- EASYAIR Hybrid: combination of water-fed and electric air curtain.

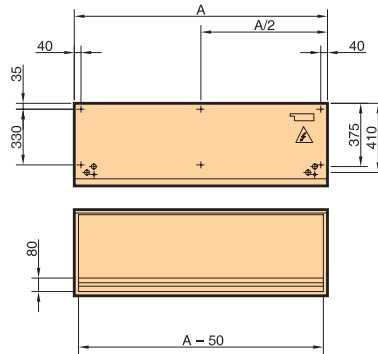
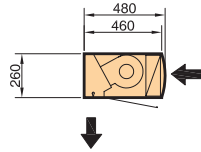
EASYAIR types M and L will be standardly delivered with a speed controlled low noise EC-fan. For type LXX this is available on request. Advantages:

- The highest efficiency in case of speed control
- Up to 50% energy saving in case of partial load
- Almost completely linearly adjustable
- Long lifetime
- Low noise level
- Integrated electronic thermal protection

# Dimensions

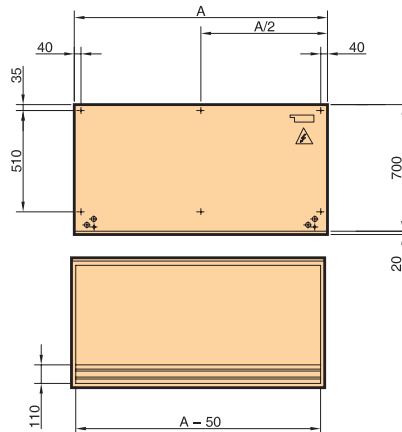
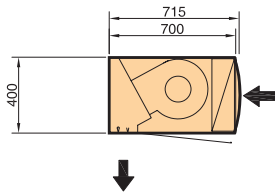
## TYPE S/M/L

- Lengths A (mm)  
 1.000  
 1.500  
 2.000  
 2.500  
 3.000



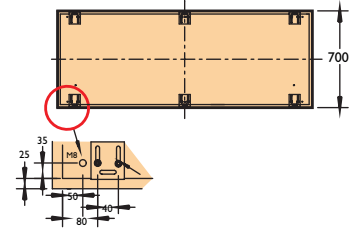
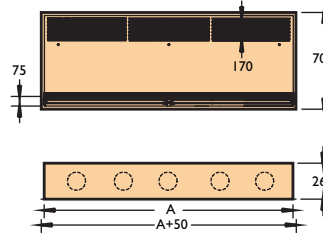
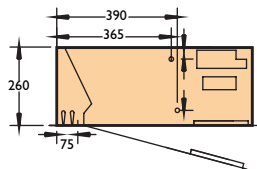
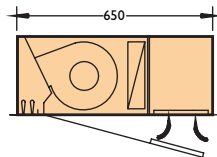
## TYPE LX

- Lengths A (mm)  
 1.000  
 1.500  
 2.000  
 2.500  
 3.000



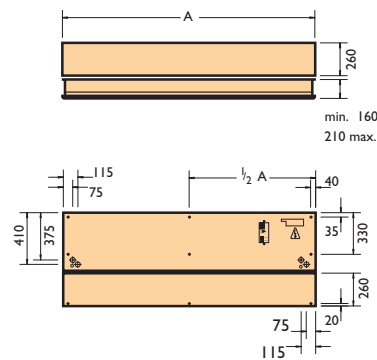
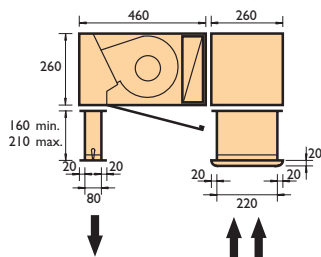
## RECESSED MODEL TYPE R-S/M/L

- Lengths A (mm)  
 950  
 1.150  
 1.450  
 1.750  
 1.950  
 2.350  
 2.450  
 3.000



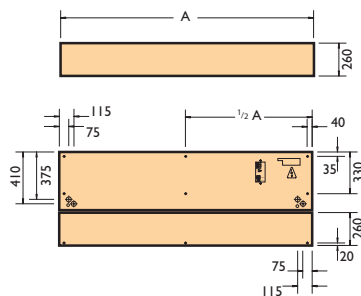
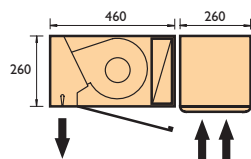
## INSTALLATION KIT

Above the suspended ceiling



## INSTALLATION KIT

Flush mounted with the suspended ceiling



Type	Length	Air displacement	Heating capacity of water 80/60 - T 20 °C	Water-side resistance water 80/60 - T 20 °C	Water connection	Connection of voltage of heating element	Electrical heating capacity	Connection voltage of fans	Nominal power	Current fan	Sound pressure	Weight
	mm	m <sup>3</sup> /h	kW	kPa	Inside wire	V (50Hz)	kW	V (50Hz)	kW	A	dB(A)*	kg
Easyair S with AC-fan - recommended mounting height (lower side of air curtain) max. 2,4 m												
S 1000 P	1000	1200	10,17	4,68	2 x 3/4"	–	–	I ~ 230	0,37	1,66	50	45
S 1500 P	1500	1800	14,13	3,24	2 x 3/4"	–	–	I ~ 230	0,56	2,49	52	76
S 2000 P	2000	2400	20,34	9,00	2 x 3/4"	–	–	I ~ 230	0,74	3,32	53	106
S 2500 P	2500	3000	24,84	4,32	2 x 3/4"	–	–	I ~ 230	0,93	4,15	54	135
S 3000 P	3000	3600	26,02	4,30	2 x 3/4"	–	–	I ~ 230	1,11	4,98	58	162
S 1000 E	1000	1200	–	–	–	3 ~ 400	3/6/9	I ~ 230	0,37	1,66	50	45
S 1500 E	1500	1800	–	–	–	3 ~ 400	4/8/12	I ~ 230	0,56	2,49	52	76
S 2000 E	2000	2400	–	–	–	3 ~ 400	6/12/18	I ~ 230	0,74	3,32	53	106
S 2500 E	2500	3000	–	–	–	3 ~ 400	6/12/18	I ~ 230	0,93	4,15	54	135
S 3000 E	3000	3600	–	–	–	3 ~ 400	6/12/18	I ~ 230	1,11	4,98	58	162
Easyair M with EC-fan - recommended mounting height (lower side of air curtain) max. 2,8 m												
M 1000 P	1000	1816	11,30	5,20	2 x 3/4"	–	–	I ~ 230	0,30	2,10	58	45
M 1500 P	1500	2724	15,70	3,60	2 x 3/4"	–	–	I ~ 230	0,50	3,10	59	60
M 2000 P	2000	3632	22,60	10,00	2 x 3/4"	–	–	I ~ 230	0,60	4,10	60	75
M 2500 P	2500	4540	27,60	4,80	2 x 3/4"	–	–	I ~ 230	0,80	5,13	61	80
M 3000 P	3000	6356	29,70	5,60	2 x 3/4"	–	–	I ~ 230	0,90	7,20	62	100
M 1000 E	1000	1816	–	–	–	3 ~ 400	3/6/9	I ~ 230	0,30	2,10	58	45
M 1500 E	1500	2724	–	–	–	3 ~ 400	4/8/12	I ~ 230	0,50	3,10	59	60
M 2000 E	2000	3632	–	–	–	3 ~ 400	6/12/18	I ~ 230	0,60	4,10	60	75
M 2500 E	2500	4540	–	–	–	3 ~ 400	6/12/18	I ~ 230	0,80	5,13	61	80
M 3000 E	3000	6356	–	–	–	3 ~ 400	10/20/30	I ~ 230	0,90	7,20	62	100
Easyair L with EC-fan - recommended mounting height (lower side of air curtain) max. 3,2 m												
L 1000 P	1000	2724	15,50	2,27	2 x 3/4"	–	–	I ~ 230	0,50	3,10	60	50
L 1500 P	1500	3632	22,60	7,30	2 x 3/4"	–	–	I ~ 230	0,60	4,10	61	65
L 2000 P	2000	5448	33,50	5,50	2 x 3/4"	–	–	I ~ 230	0,90	6,15	62	80
L 2500 P	2500	6356	39,60	7,50	2 x 3/4"	–	–	I ~ 230	1,10	7,20	63	105
L 3000 P	3000	7264	34,00	7,20	2 x 3/4"	–	–	I ~ 230	1,20	8,20	64	125
L 1000 E	1000	2724	–	–	–	3 ~ 400	5/10/15	I ~ 230	0,50	3,10	60	50
L 1500 E	1500	3632	–	–	–	3 ~ 400	7,5/15/22,5	I ~ 230	0,60	4,10	61	80
L 2000 E	2000	5448	–	–	–	3 ~ 400	10/20/30	I ~ 230	0,90	6,15	62	110
L 2500 E	2500	6356	–	–	–	3 ~ 400	10,7/21,4/32	I ~ 230	1,10	7,20	63	142
L 3000 E	3000	7264	–	–	–	3 ~ 400	10,7/21,4/32	I ~ 230	1,20	8,20	64	172
Easyair LXX with AC-fan - recommended mounting height (lower side of air curtain) max. 4,1 m												
LXX 1000 P	1000	5120	26,10	15,45	2 x 1 1/4"	–	–	I ~ 230	1,40	6,10	63	100
LXX 1500 P	1500	7680	41,00	17,54	2 x 1 1/4"	–	–	I ~ 230	2,10	9,10	64	130
LXX 2000 P	2000	10240	55,80	18,36	2 x 1 1/4"	–	–	I ~ 230	2,80	12,10	65	180
LXX 2500 P	2500	12800	70,30	18,71	2 x 1 1/4"	–	–	I ~ 230	3,50	15,20	66	210
LXX 3000 P	3000	14200	67,00	19,60	2 x 1 1/4"	–	–	I ~ 230	4,10	18,20	68	250

\* Measured at 3m.

Conversion table

T <sup>a</sup> Water °C	T <sup>a</sup> Air + 15°C	T <sup>a</sup> Air + 18°C	T <sup>a</sup> Air + 20°C
100/80	1,56	1,49	1,44
90/70	1,34	1,26	1,22
80/60	1,11	1,05	1
70/50	0,89	0,82	0,78
60/40	0,67	0,61	0,56
55/35	0,56	0,5	0,45

# Accessories – additional sections



Connecting cable between controller and air curtain



Thermostatic three-way valve



Room thermostat

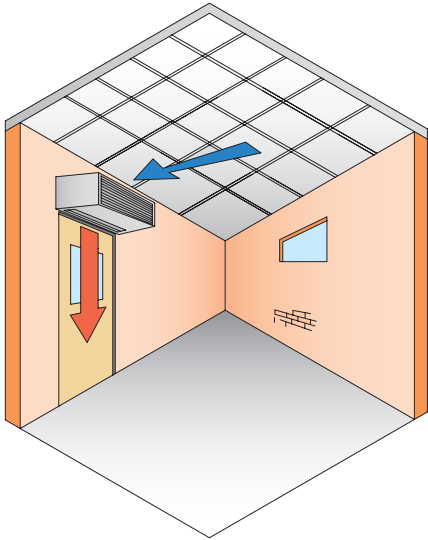


Door contact

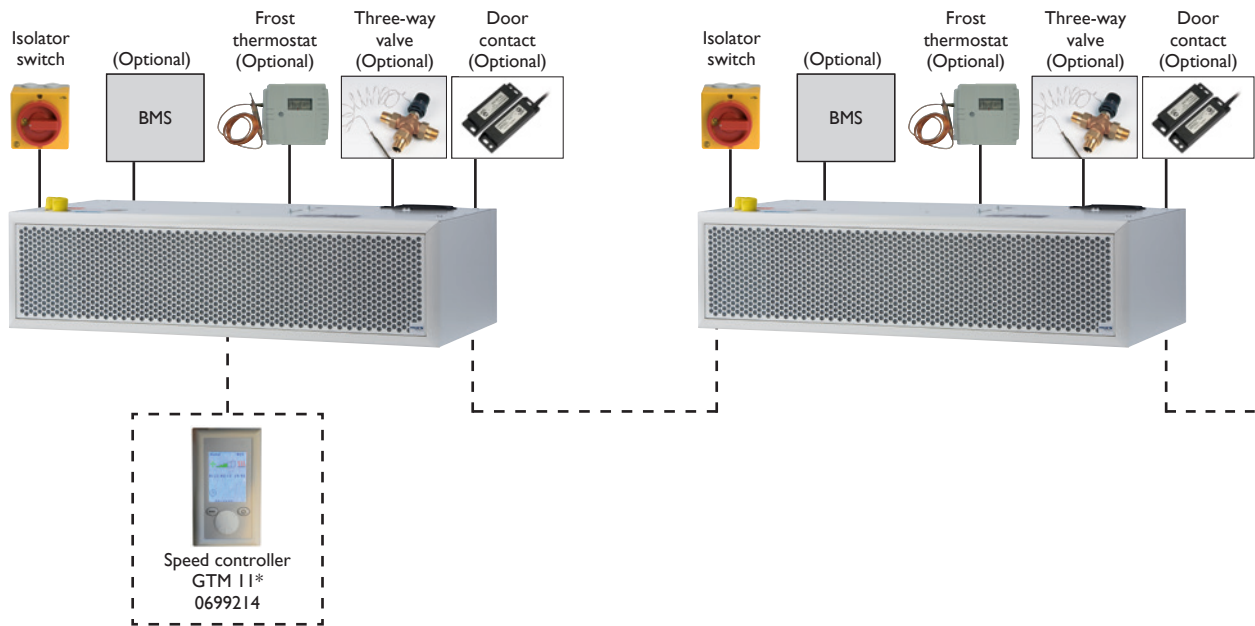


Ceiling fixing set

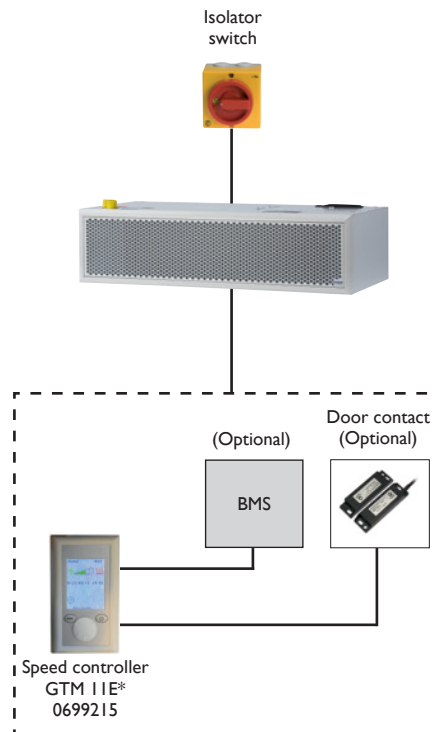
# Assembly/location suggestions



## EASYAIR P (hot water air curtain)



## EASYAIR E (electrically heated air curtain)



\* All Easyair air curtains are standardly delivered with a GTM II(E) speed controller



**mark**<sup>®</sup>  
CLIMATE TECHNOLOGY  
FEELS BETTER, WORKS BETTER  
[WWW.MARKCLIMATE.COM](http://WWW.MARKCLIMATE.COM)

**Distributed by**  
Adremit Limited.  
Unit 5A Commercial Courtyard, Duke Street, Settle,  
North Yorkshire, United Kingdom. BD24 9RH  
T: +44 (0) 1729 824 108  
W: [www.puravent.co.uk](http://www.puravent.co.uk)  
E: [info@puravent.co.uk](mailto:info@puravent.co.uk)

