

WeatherTone®

Pre-finished weatherboard system

VULCAN
CLADDING SYSTEMS



WeatherTone® pre-finished weatherboard

The varied woodgrain texture gives the natural timber look, and the timber-based plank feels solid like wood. It offers the best of both worlds – the warmth and feel of timber weatherboard without the problems associated with real wood, especially colour change.

Classic – traditional interlocking Shiplap, WideVee and Lapboard styles

Lively – natural woodgrain with 2-tone stained effect paint

Sustainable – SFI certified timber; uses most of the tree!



Contents

WeatherTone® overview	Page 5
WeatherTone® plank profiles	Page 6
Corners and accessories	Page 8
Typical details	Page 10
Batten installation	Page 14
Colour range	Back cover

Main picture: *Lapboard 9" Sand, Watford*

Right: *Shiplap Bright Cedar, Leighton Buzzard*

Left: *WideVee Walnut; Shiplap Natural Cedar; Lapboard 9" Dark Oak*





WeatherTone® overview

Introduction

With the increasing popularity of decorative external cladding in new build projects and 'facade lift' older buildings, and the increase of lightweight, modular-framed construction and rapid dry systems, the need for a truly modern timber system such as WeatherTone® has never been greater. Vulcan Cladding Systems has the weatherboard solution for every project and the experience to sort out the details.

WeatherTone® is ideal in both commercial and domestic situations for lightweight weather protection, to replace failed cladding or as an architectural feature; it provides the look and feel of timber cladding without the installation and maintenance problems associated with real wood. This system brings peace of mind and long term cost savings; where real wood tends to split and change colour, WeatherTone® is stable and colourfast – a truly modern construction material.

Product range

The planks are 3660mm long (12'), available in up to 17 colour options in 3 styles, WeatherTone® has the ideal choice for every project:

- Shiplap 280 mm cover (1.02m²) - horizontal
- WideVee 280 mm cover (1.02m²) - vertical
- Lapboard 9" 199 mm cover (0.72m²) - horizontal

The system includes a complete range of colour matched accessories for every stock plank: exterior grade latex acrylic caulking, aluminium powder coated corner posts, channels, drip trims, joints and vent sections. The standard aluminium corner post range is extensive, including woodgrain texture. Special colour matched angles and trims made to order. Customers should reserve stock at an early stage of the project.

Applications

WeatherTone® is suited wherever weatherboard is required:

- Commercial or domestic projects
- New build and renovation
- Overcladding and lightweight rainscreen
- Conservation areas to give traditional appeal
- Factory-produced buildings, park homes, garden offices
- Traditional buildings, houses and schools

Manufacture

WeatherTone® production process premium fibres of mixed hardwoods (using the entire tree), breaks these down into 100% natural wood fibres, combines them with a 6% mix of resin, wax and alum, and compresses them under extreme heat and pressure. The surface treatment consists of 5 separate coats of acrylic paint (environmentally safe water-based formula) baked on at high temperature.

Advantages

WeatherTone® offers considerable advantages to both builders and end-users:

- Lively appearance of wood, with knots and saw marks
- 17 standard colours including 2-tone wood colours
- No fading, mellowing or darkening with the sunlight
- Full range of colour matched trims and accessories
- Durable, engineered with added resin, wax and alum
- No timber selection to avoid defective wood
- Fixing quicker and cheaper; relatively lightweight 8kg/m²
- Can be cut just like ordinary timber weatherboard
- Less waste than with real timber products
- Treated to resist insect and fungal attack
- Excellent warranties of a modern construction material
- Sustainable, manufactured with forestry-certified timber
- Re-paintable surface

Installation

WeatherTone® is easy to fit using ordinary carpenters tools. Battens and breather membranes must be used, providing a continuously ventilated dry airflow, allowing the cladding and the building to breathe. WeatherTone® must be properly installed. Battens must be firmly fixed at correct centres and configuration. Vulcan can assist with any unusual details or any other advice.

Maintenance

A twice yearly wash should be carried out using warm water and mild household detergent, followed by a rinse with clean water. Abrasive cleaners, chemicals and solvents must not be used. Clean by hand, never with a pressure washer. WeatherTone® is re-paintable. For full maintenance and painting details contact Vulcan sales office.

Warranty

WeatherTone® has 5 year 100% labour and materials warranty, 10 year paint limited warranty, and 15 year substrate limited warranty, all subject to correct installation and cleaning. For full warranty details contact Vulcan sales office.

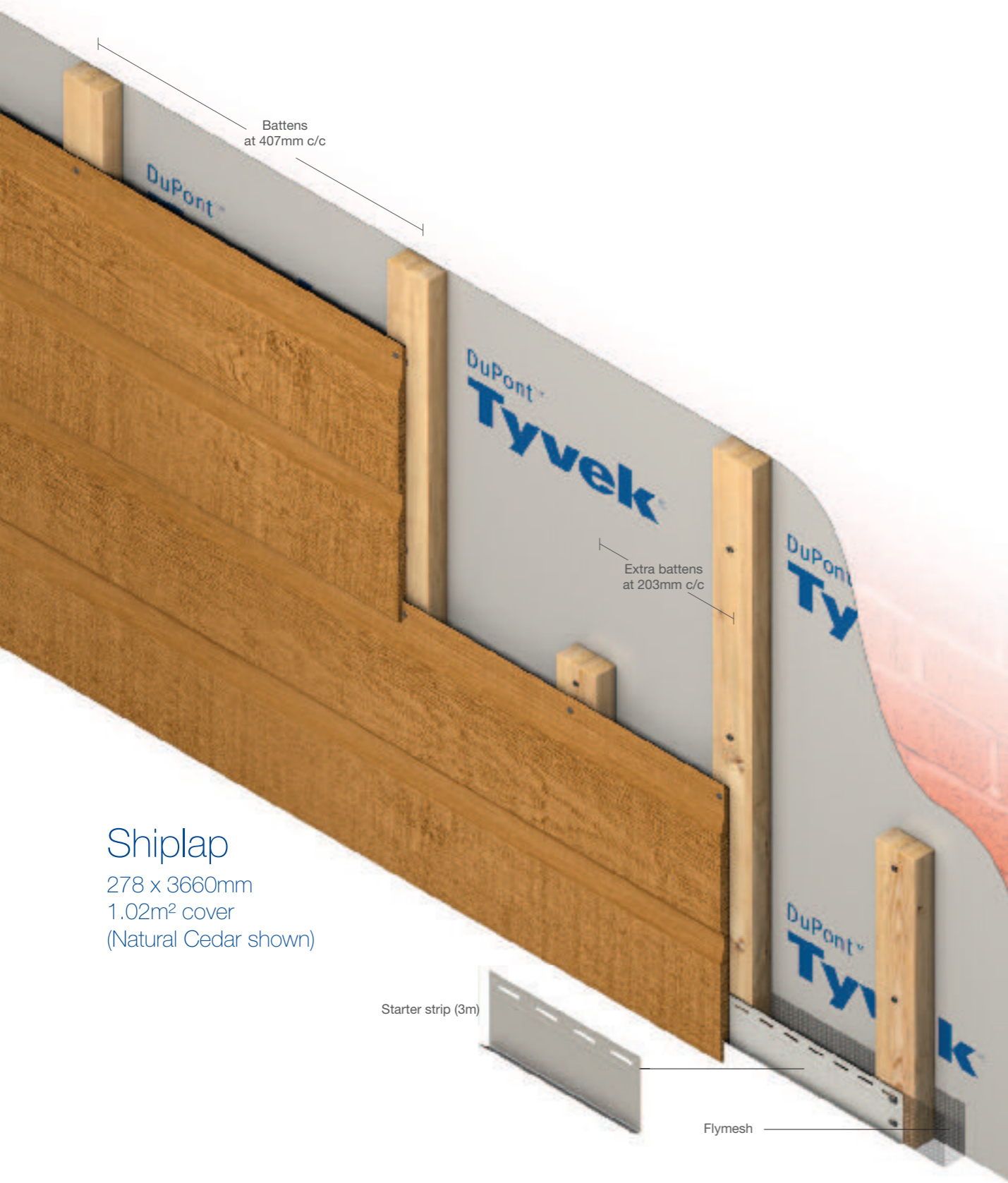
Contact

Sales and technical enquiries:
 Tel: 020 8681 0617
 Fax: 020 8256 5977
 Email: sales@vulcansystems.co.uk
 Web: www.vulcansystems.co.uk/weathertone



Left: Shiplap Granite, Northampton

WeatherTone® plank profiles



Shiplap

278 x 3660mm
1.02m² cover
(Natural Cedar shown)

WideVee
278 x 3660mm
1.02m² cover
(Walnut shown)



Lapboard 9"

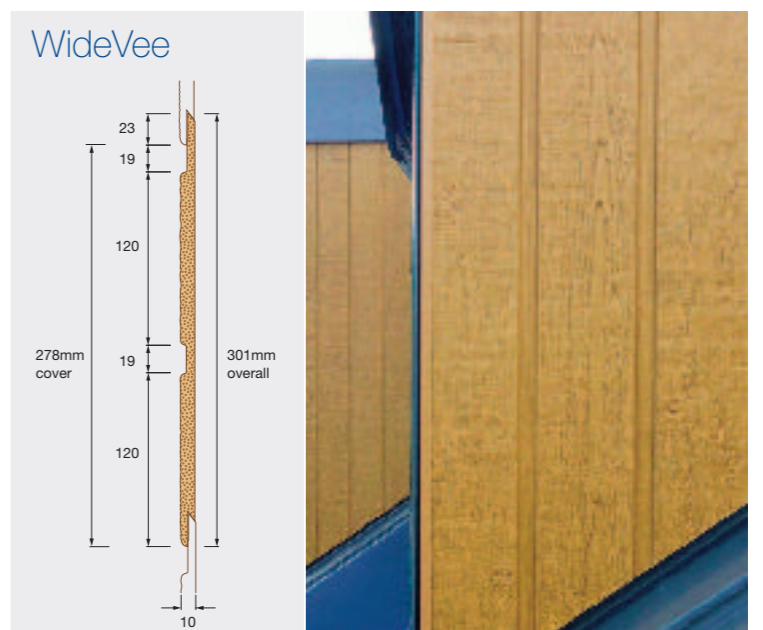
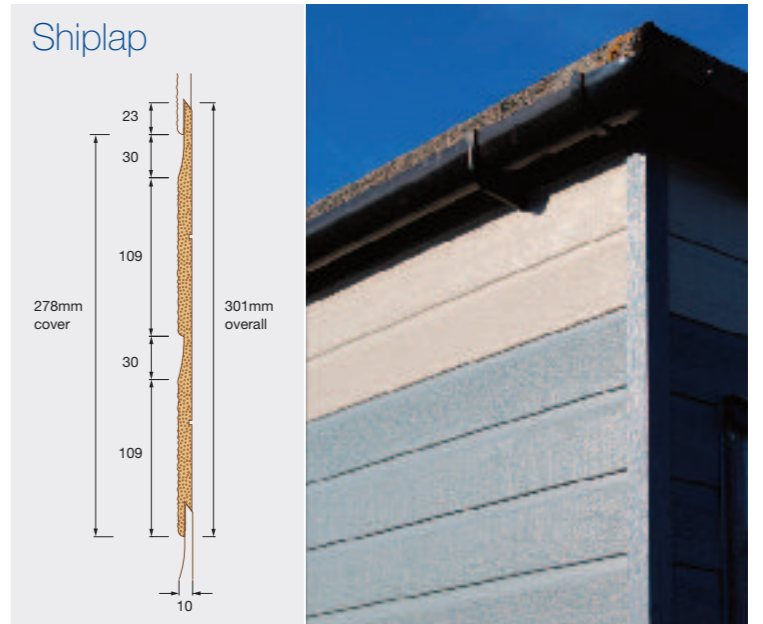
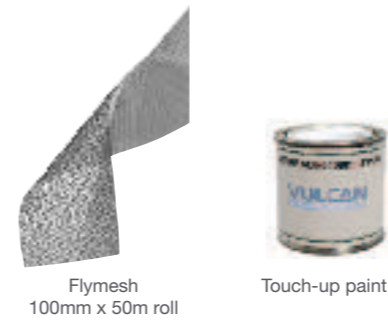
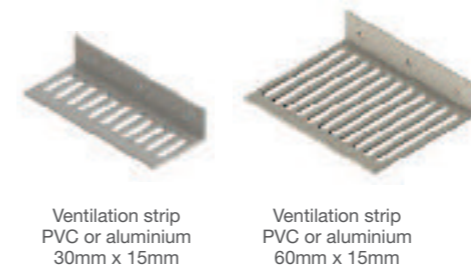
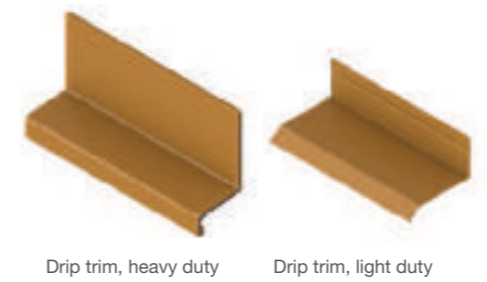
198 x 3660mm
0.72m² cover
(Dark Oak shown)

WeatherTone® accessories

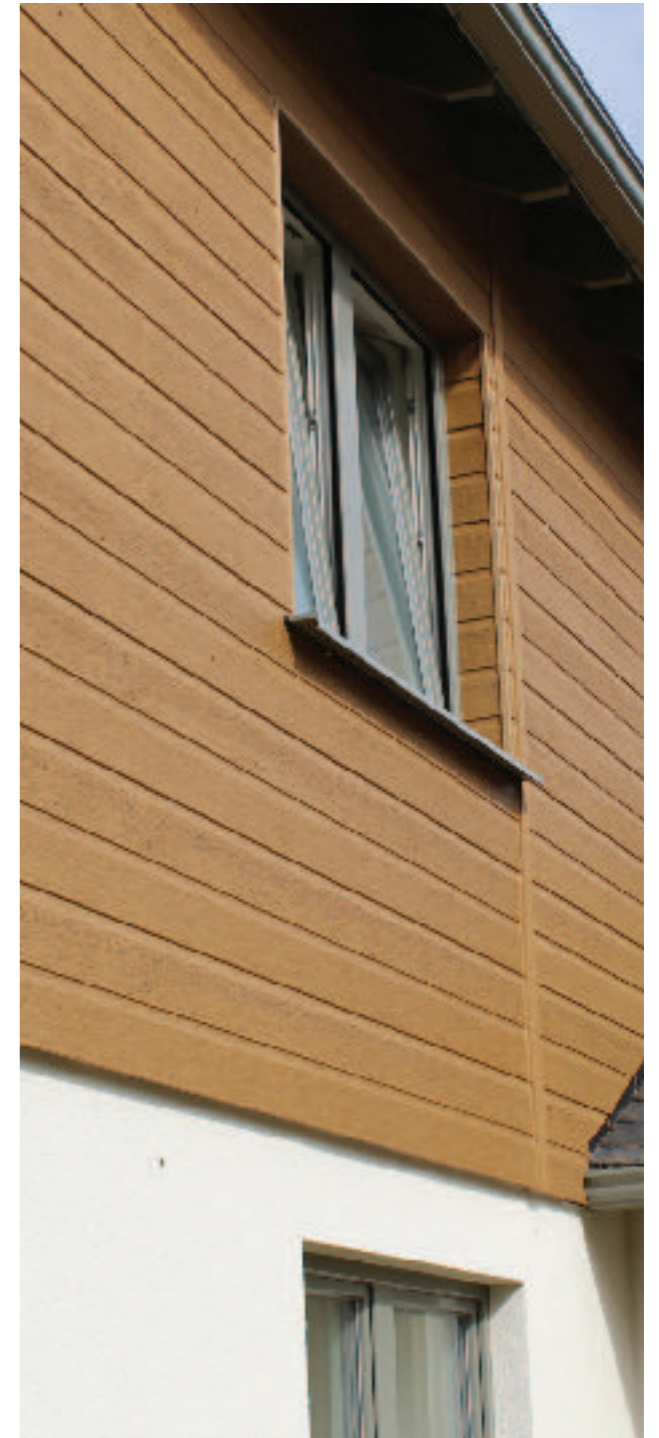
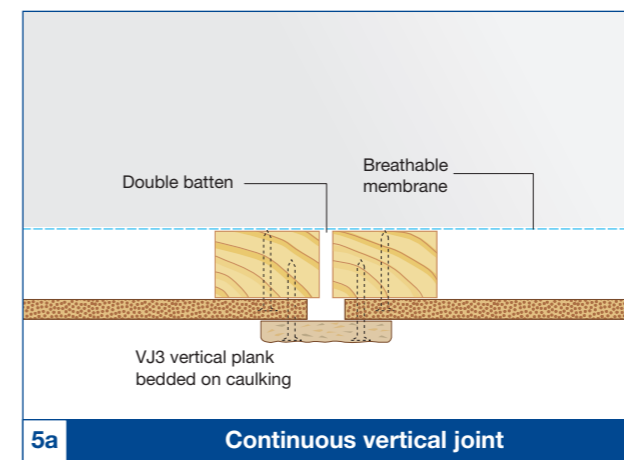
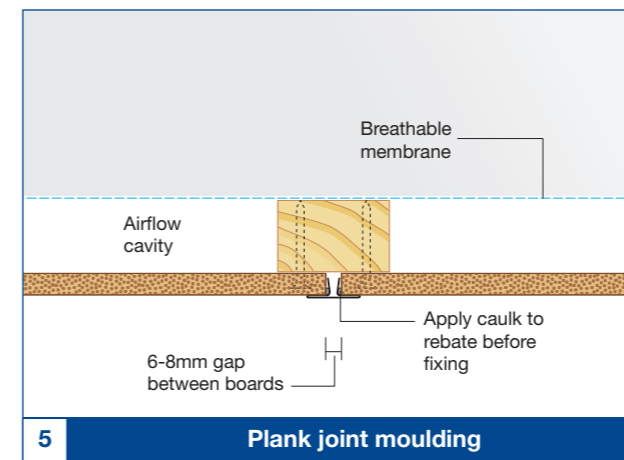
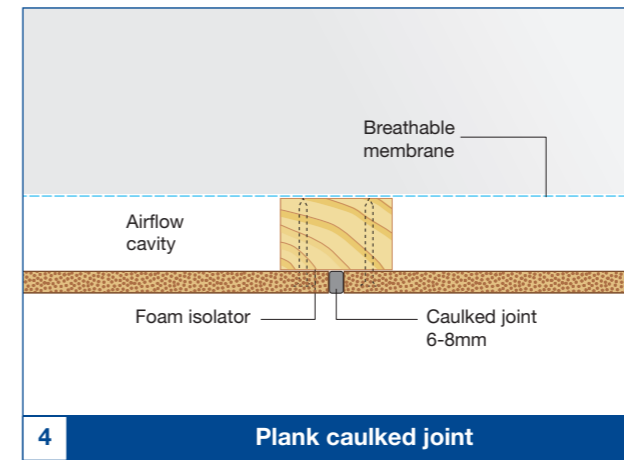
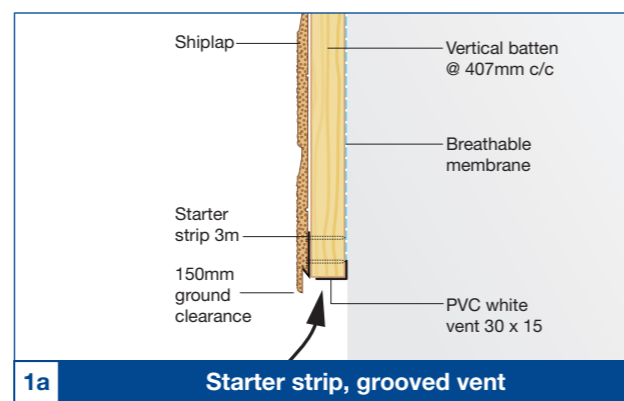
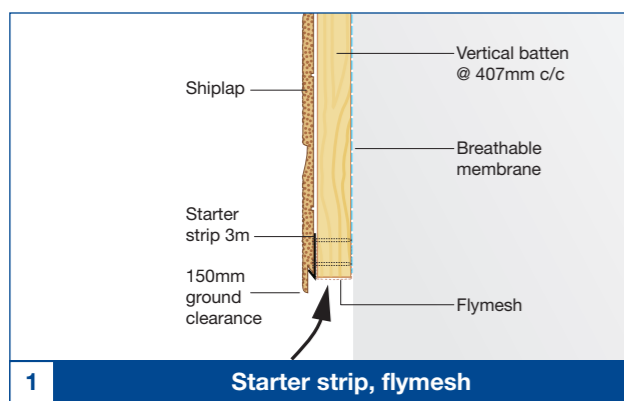
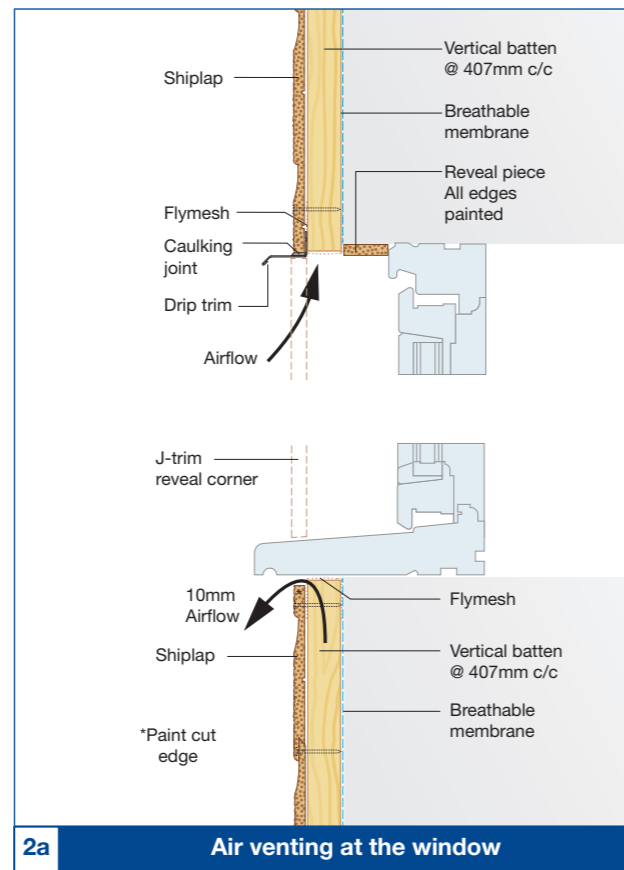
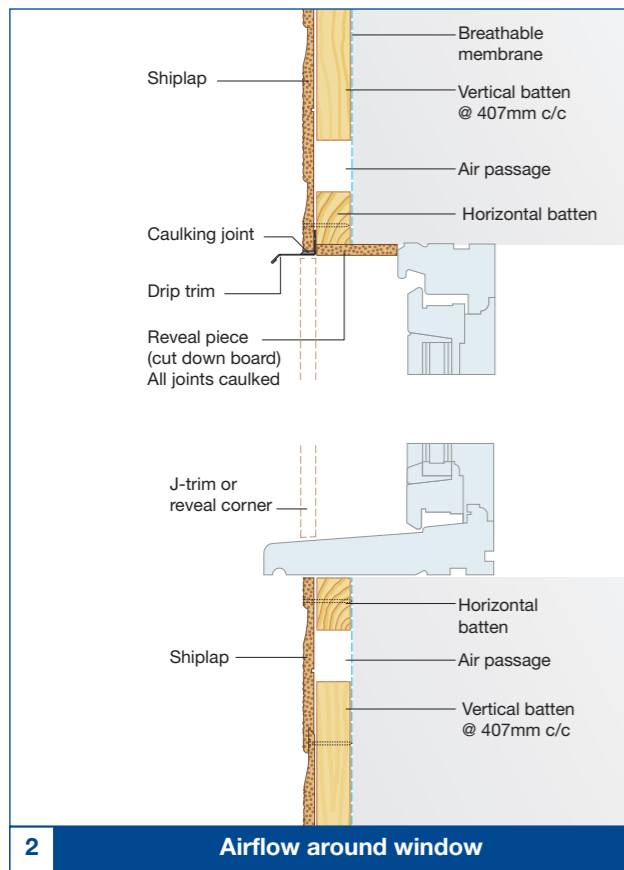
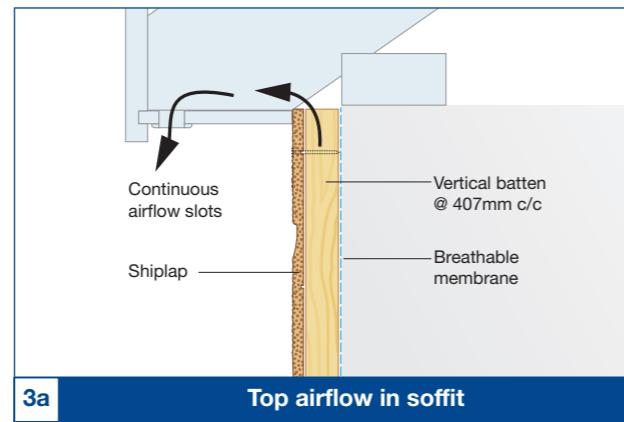
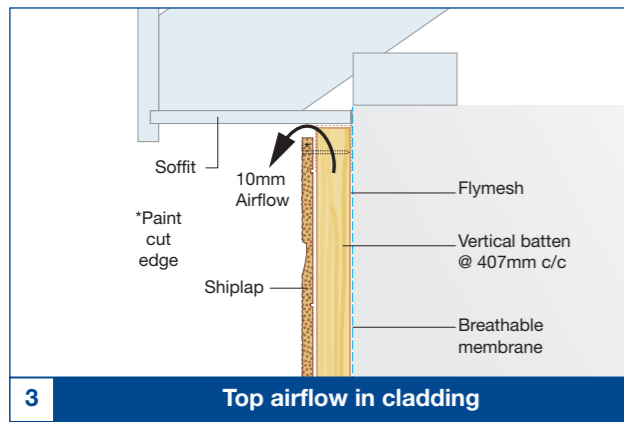
Complete range of WeatherTone® trims: Vulcan colour coated aluminium corners, drip and J-trims are best cut with a fine-toothed metal cutting blade. The coloured caulking adds the finishing touch to a fully sealed cladding. Aluminium trims and corners are 3m long. Special trim sections can be made to order.



CAD details are available on request.
 DuPont™, Tyvek® and FireCurb™ are trademarks or registered trademarks of E.I. du Pont de Nemours and Company or its affiliates.



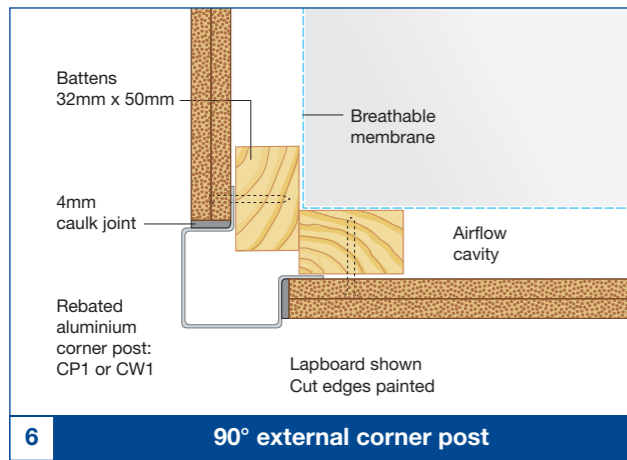
Typical details



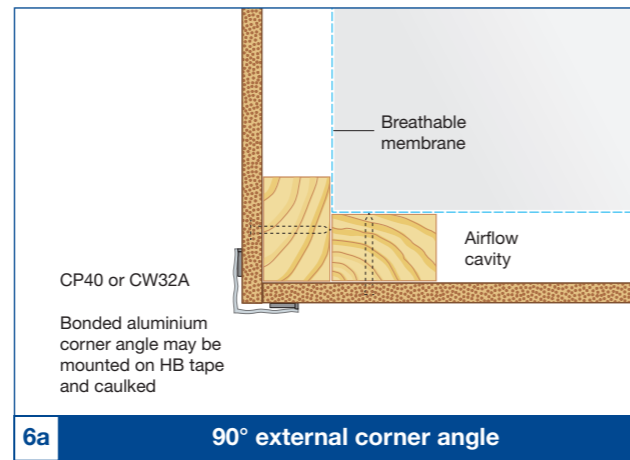
Notes

1. Further details on pages 12-13.
2. For domestic and commercial batten layouts see page 14.
3. For batten sizes see page 14.
4. See also Details 14 and 15 for other base vent situations, e.g. at dwarf walls and dormer windows.
5. Special corner sections can be produced to order. Please contact the Vulcan Sales office for more information:
Tel: +44 (0) 208 681 0617
Email: sales@vulcansystems.co.uk

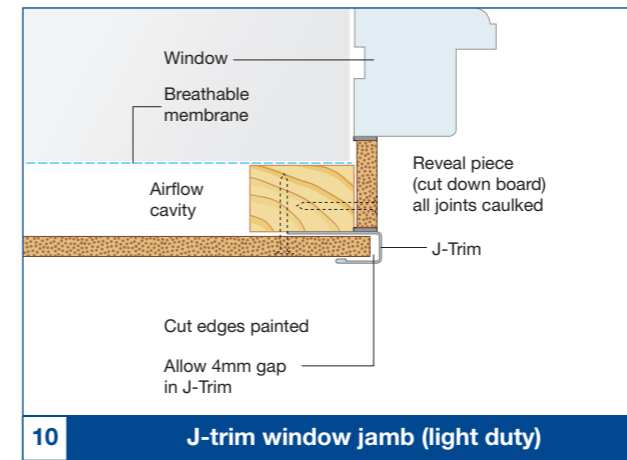
Typical details continued



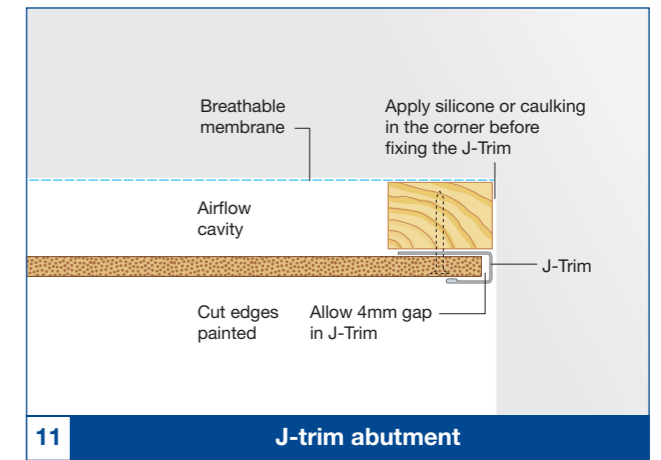
6 90° external corner post



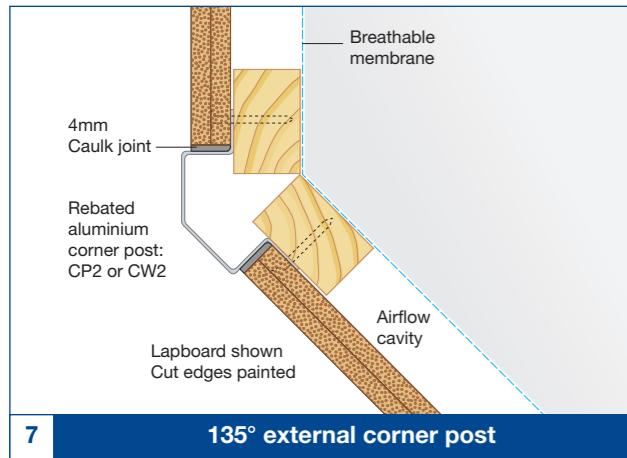
6a 90° external corner angle



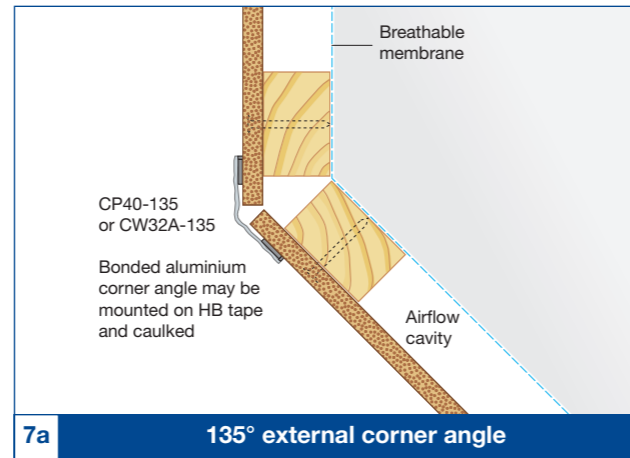
10 J-trim window jamb (light duty)



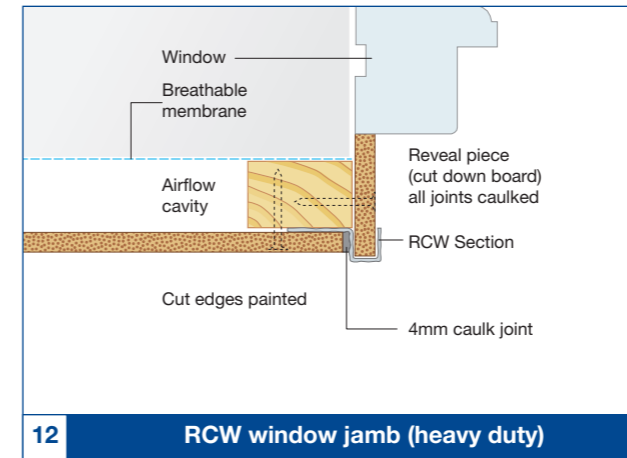
11 J-trim abutment



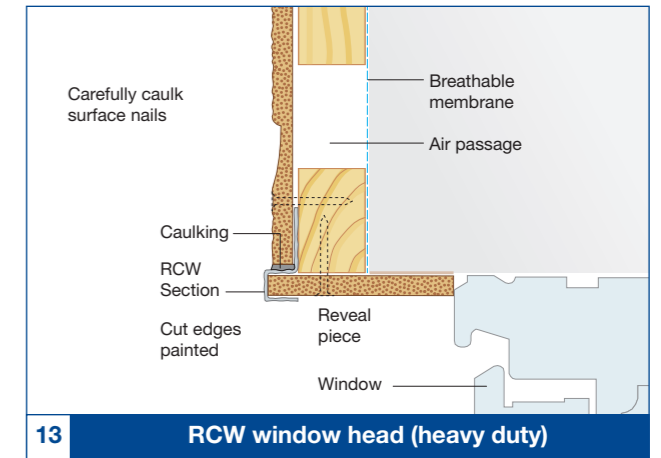
7 135° external corner post



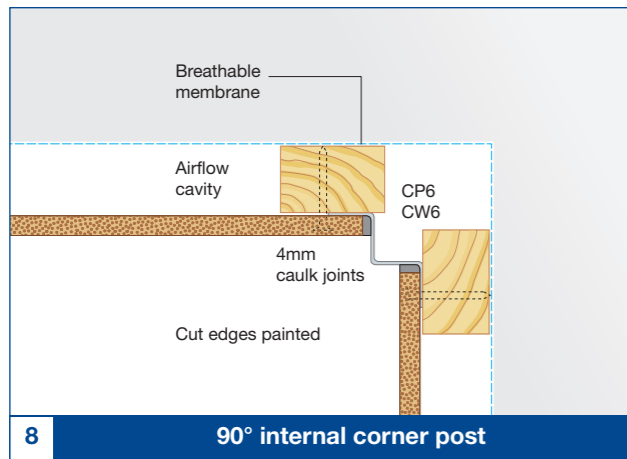
7a 135° external corner angle



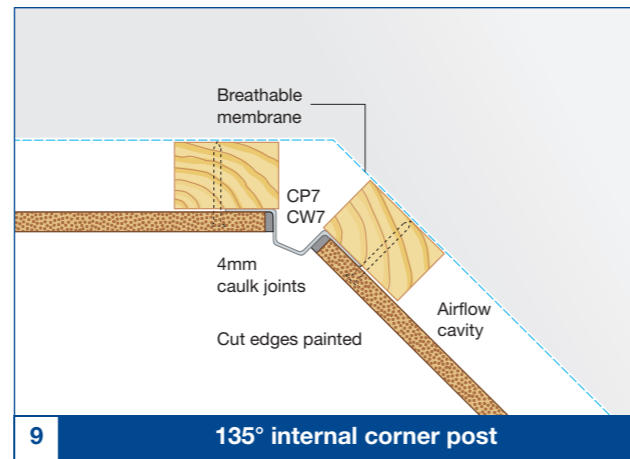
12 RCW window jamb (heavy duty)



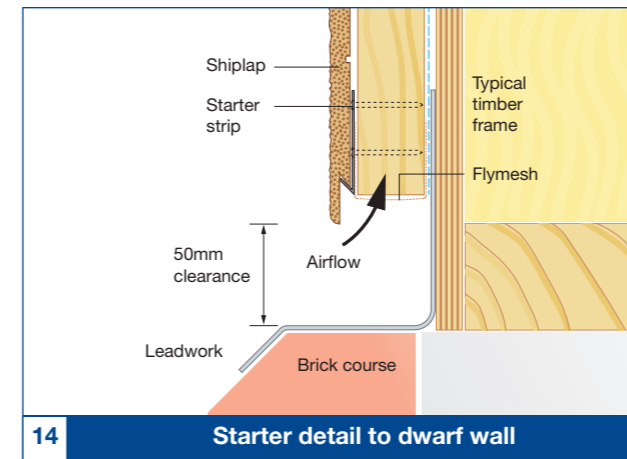
13 RCW window head (heavy duty)



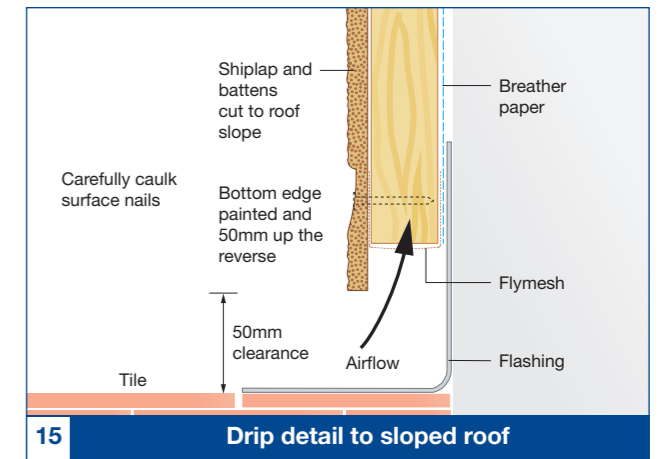
8 90° internal corner post



9 135° internal corner post



14 Starter detail to dwarf wall



15 Drip detail to sloped roof

Installation

Batten installation

WeatherTone® as with any timber cladding, continuous airflow from bottom to top is vital for long term stability of the plank and battens (i.e. the 'chimney effect').

We have illustrated some typical fixing details on domestic and commercial properties. Study relevant details on pages 10-13 before battening. If details are not followed the warranties will be invalid and costly adjustments will be necessary. Vulcan can accept no responsibility for incorrect installation.

Sequence of work

Battening for Shiplap and Lapboard 9" (horizontal clad):

- 1 Attach breather membrane to the building at suitable height (see Tyvek options on page 8)
- 2 Bottom of battens minimum 170-180mm above ground level to give cladding clearance of 150mm.
- 3 Fix corner battens and pack to bring to vertical.
- 4 Using string lines, pack battens to create a straight facade.
- 5 Fix battens around door/windows and pack to string line.
- 6 Fix intermediate battens at maximum 407mm centres with ALL details as below.
- 7 Fix extra battens 200mm long at the bottom.

Battening options for WideVee (vertical clad):

OPTION 1: Counter battens maximum 407mm centres in both directions

or

OPTION 2: To keep cavity depth to a minimum, battens can be fixed at 278mm centres, i.e. one vertical batten per board.

All airflow instructions below must be followed.

Where WeatherTone® is used for Fascias, ensure complete bottom to top airflow, and battens at max 407mm centres.

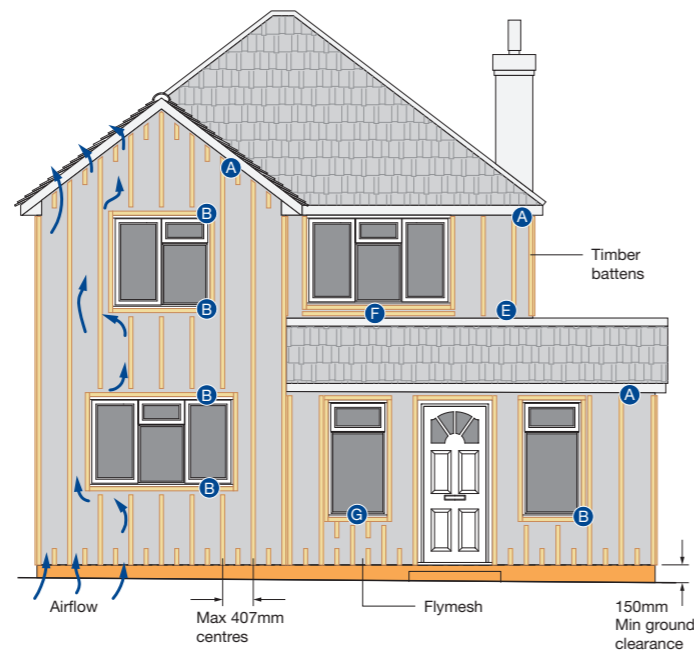
Batten notes

- Below soffit – cut vertical battens 10-15mm short and fit flymesh. At top of gable, add short vertical battens to add fixing points for angle-cut planks.
- Narrow windows (less than 2m wide) surround with battens. Cut vertical battens 50mm short above and below to allow airflow around the window.
- Below windows wider than 2m, cut vertical battens 10-15mm short and fit flymesh (no horizontal battens below window).
- Above windows wider than 2m, cut vertical battens level with window head and fit flymesh (no horizontal battens above window).
- Above lean-to roof, leadwork should be installed before breather membrane and battens. Vertical battens to be cut 50mm above the roof level.
- Shallow detail below windows – always ensure full airflow (i.e. with horizontal batten as shown or short vertical battens as B).

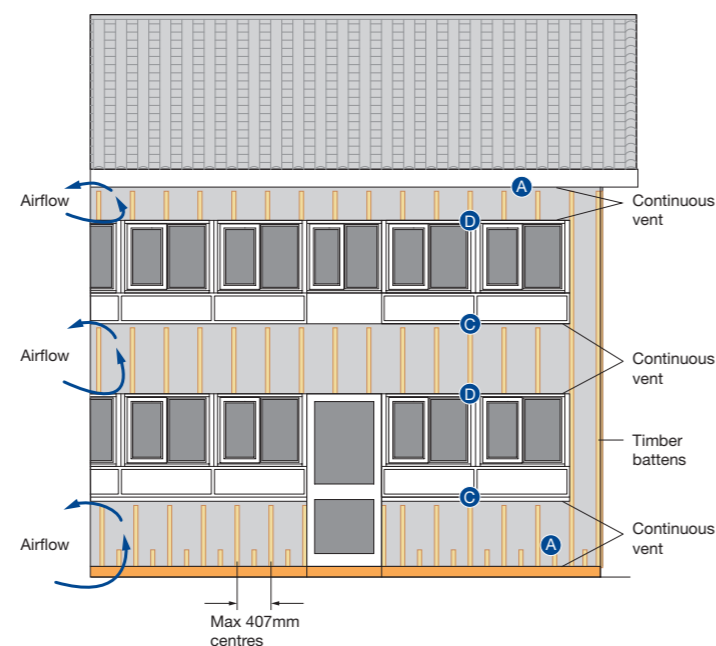
Batten sizes

Battens to brickwork 32mm x 50mm (1¼" x 2") treated
Battens to timber frame 25mm x 50mm (1" x 2") treated

Domestic



Commercial



Plank installation

Prior to fixing WeatherTone®

Store outside under a white waterproof sheet or in an unheated building so boards acclimatise. Store on flat pallet supplied. Do not install faulty or damaged planks.

When battens are solidly fixed, the flymesh fitted and the ventilation passages around windows are complete, install WeatherTone® planks as below (refer also to pages 6-7):

- 1 Fix the corner posts first if they are rebated type i.e. CP2. The bottom of the corner should run past the battens: (20mm for Shiplap; 25mm for Lapboard).
- 2 For horizontal planks (Shiplap and Lapboard 9") fix the continuous Starter strip level with the bottom of battens. Fix the Starter with 2 nails per batten (detail 1)
- 3 Firmly place the first plank into the Starter strip; check it is fully engaged; plank ends must always be nailed to a batten. For the stick-on corners i.e. CW32A (detail 6A) the planks run to the corner. For rebated type corners i.e. CP2 (detail 6) allow 3-4mm caulking gap against corners.
- 4 Fix planks to the battens with stainless steel ringshank nails in the top nailing groove at max 407mm centres. Nail heads should be flush, hidden by the next row.
- 5 Joints between planks (see page 11) – options:
Caulked Joint, i.e. with no joint moulding. Apply isolator tape to the batten before fixing the plank. The joints are filled with colour matched caulk; (detail 4 and caulking note below), or:
Joint Moulding: staggered plank joints using Textured plank profile. Leave 6-8mm joint gap (detail 5), or:
Vertical Joint: planks fixed in-line, in 3670mm bays; leave gap of 10mm between boards (detail 5A)
- 6 Locate next row of planks by interlocking the edges.
- 7 When engaged equally all along, push upper plank down firmly onto fixed plank. *Important* use a plank off-cut and hammer to fully connect the planks. Do not crush the edges.
- 8 Keep dry – seal cut ends with touch up paint before fixing, and prevent water getting in on the reverse side (shield the unfinished cladding from rain at night using plastic sheet). Joints should be sealed as you go along.

9 *Important* Sleeve and seal ventilator grilles or holes through the cladding to prevent warm, moist air from the building getting to the reverse.

10 Countersink exposed fixings and seal with colour matched caulking. Do not smear around the hole.

Fixing WideVee planks

- 11 Fixed to vertical battens at nominal 278mm centres. We recommend you fix only 5 battens ahead to make sure the planks align with the batten every time.
- 12 Starter Strip can be used vertically for secret fixing. The last plank is normally face fixed and pointed with caulking.
- 13 Use an off-cut and hammer to fully connect the planks.

Caulked joints

Apply foam isolator tape behind boards, so the caulking does not touch the batten. Colour matched latex caulking should be applied immediately after fixing. Joint gap should be 6-8mm between planks; 3-4mm against corners or trims. Caulking dries quickly so should be applied carefully to limit the need for tooling.

Store caulking in a dry area between 10-30°C. To make caulking easy to use warm the tube against radiator.

- Ensure that surfaces are clean and free of dust, grease or silicone etc. Use a standard silicone gun. Cut caulking nozzle square and slightly wider than joint. Puncture the end of the tube just before use.
- Apply caulking with a uniform pressure to fill space between boards, forming a slight bulge that will level when dry.
- Extra caulking may be required after the first application has dried, or due to movement with weathering. Keep spare tube for twice-yearly maintenance.

Touch up/exterior paint

Touch up paint must be applied with a cotton bud to the damaged area only. Site applied paint often weathers differently to the factory finish, therefore it is not possible to fully disguise damaged areas. For areas larger than 25mm diameter the plank may need to be replaced.

Exterior paint can be used if the WeatherTone is correctly prepared. For full maintenance and paint details contact Vulcan sales office.



Battens with airflow around windows



Use ordinary wood tools



Use an off-cut and hammer to fully connect the planks



Plank cuts painted – use stainless steel ringshank nails



Dutch Green

Pine Forest

Granite

Slate Blue

Storm Green

Light Grey

Almond

White

Cream

Sand

Khaki

Bright Cedar

Natural Cedar

Dark Oak

Walnut

Chestnut Red

Black



VULCAN

CLADDING SYSTEMS

Vulcan Cladding Systems
4 Imperial Way, Airport Industrial Estate, Croydon CR0 4RR
Tel: +44 (0) 208 681 0617 Fax: +44 (0) 208 256 5977
sales@vulcansystems.co.uk www.vulcansystems.co.uk

Due to printing limitations, colours shown are for guidance only