

# Test chamber for lithium-ion energy storage devices

The battery test chambers are suitable for aging and performance tests on lithium ions cells and modules. To ensure safety during the tests, the chambers are matched on the EUCAR hazard level 6.

## Application:

Cells and modules are tested at different temperatures with and without a current supply to measure performance.

## Safety features::

- Class 2 independent temperature safety device when temperature is set to 120 °C
- Temperature range limited to 120 °C on the controller
- Stainless steel pressure relief flap installed in the middle of the top of the unit
- Enhanced door lock mechanism with reinforced brackets
- H<sub>2</sub>, CO, O<sub>2</sub> monitoring system
- Nitrogen purge
- LCO<sub>2</sub> Fire suppression



## YOUR BINDER CONTACT:

Fon: +49 (0) 7462/2005-0  
E-Mail: [info@binder-world.com](mailto:info@binder-world.com)

[www.binder-world.com](http://www.binder-world.com)





**REVERSIBLE PRESSURE RELIEF FLAP**

Pressure relief flap with an additional relieving spring as a safety measure in the event of faults



**NITROGEN PURGE**

Nitrogen purges into chamber to reduce the oxygen content in the inner chamber

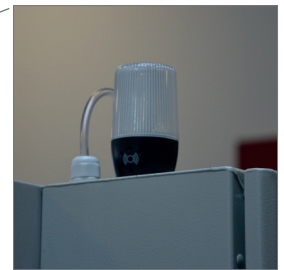


**CO2 FIRE SUPPRESSION**

Triggering the CO2 compressed gas cylinder about emergency stop, exceeding a CO concentration value or one temperature increase in the test room.



**TEMPERATURE RANGE LIMITED TO 120°C ON THE CONTROLLER**



**SIGNAL LAMP**

Acoustic sounder and optical alert at different operating modes



**DOOR-LOCKING MECHANISM WITH STRONG CLOSING BRACKETS ON THE SIDE**

Access port for introducing external measuring instruments



**GAS DETECTION**

The detection of a fire is done by measuring the CO concentration. The H2 concentration is also monitored to detect battery cell over-heating. O2 is also monitored and can be reduced to minimise risks.

**FURTHER ADJUSTMENTS AVAILABLE ON REQUEST:**

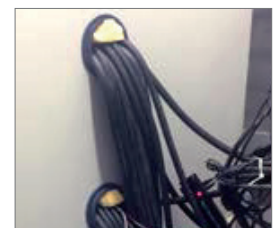
Lithium-Ionen units are converted by our BINDER INDIVIDUAL department according to special customer requirements, and equipped with additional functions.



Program sequence display using indicator lamps



Electromechanical door lock mechanism controlled in a program and/or manually



Additional access ports available in almost all sizes and locations

\*Operator is responsible for ultimate safety measures