



smart
PIMS[®]

Permanently installed monitoring system



Remote Asset- Integrity Monitoring

Measuring Metal Loss with
Installed Ultrasonic Sensors & IoT



2 Opus Park, Lockheed Close, Preston Farm Ind Est,
Stockton TS18 3BP UK

Tel: +44 164 255 55 75

Email: inspection@ndtgsl.co.uk

Web: www.ndtgsl.co.uk

Productivity advantage

Sensor Networks, Inc. is a US-based IoT technology company specializing in networked installed ultrasonic sensor systems engineered for precision, scalability and versatility in safety-critical, energy-sector assets. Our unique, patent-pending product and service offering helps customers cost-effectively manage their corrosion and erosion measurement challenges with plant piping, vessels and other components—both for regulatory compliance and improved asset management.

Metal loss due to corrosion & erosion is a major issue and cost for:

- Refineries: overhead crude lines and naphthenic acid corrosion
- Chemical plants: hydrofluoric acid corrosion
- Oil production facilities: sand erosion
- Mid-stream assets: general ID corrosion and individual pit monitoring
- Electric power generators: FAC and MIC
- Any PSM-regulated sites: compliance and loss prevention

A fundamental tenet of any asset-integrity strategy is to accurately measure metal loss so it can be properly managed. Sensor Networks' smartPIMS provides that as a safe and cost-effective solution.

“Measure It, Manage It”

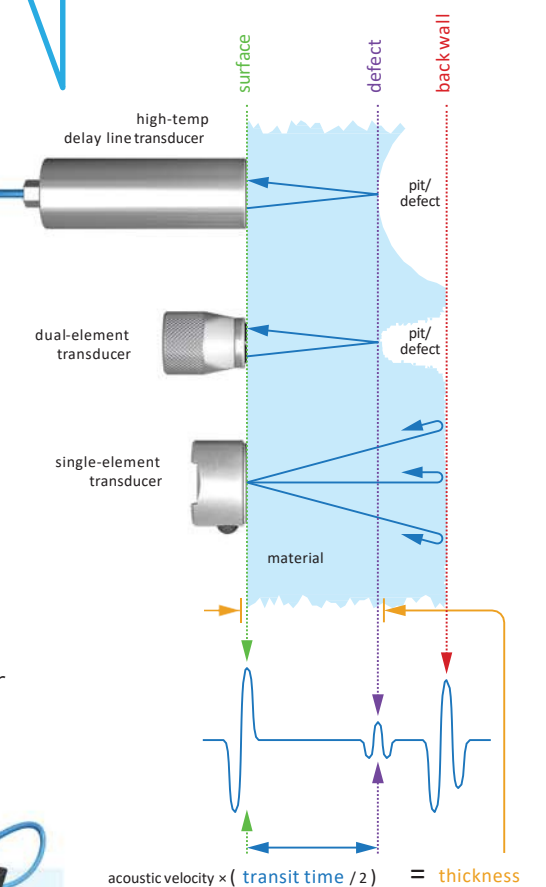


Multiple cable-drops of installed sensors can be manually accessed above grade with a tablet PC and dataPIMS™.

Ultrasound

Ultrasonic nondestructive testing (NDT) is a 70-year-old, proven, established and refined technology. Recent advances with microelectronics, software, wireless communications and the “internet of things” have made “installed ultrasound” an extremely attractive and cost-effective solution for corrosion & erosion monitoring.

- Safe. Non-invasive to the asset's pressure boundary.
- Absolute in its ability to directly measure remaining wall thickness. (Not a proxy for wall loss.)
- Extremely accurate to 0.001" (0.025 mm), with ability to measure down to 0.040" (1 mm) in carbon steel, especially for fixed-location probes.
- Rugged, reliable and portable. Low recurring maintenance costs.
- Versatile and cost-effective.



For long-term installations, including underground or harsh environments, the transducer is encapsulated for extended protection.

Installed sensors are ideally suited for monitoring areas of active metal loss due to corrosion/erosion.



smartPIMS components, software and systems are highly configurable, from just a few sensors to thousands of TMLs per network—and available for purchase, rent or as a service. Leveraging the low-cost and ubiquitous aspects of the Internet and wireless networks—including cellular—systems can be more easily and cost-effectively installed and maintained at most industrial facilities.

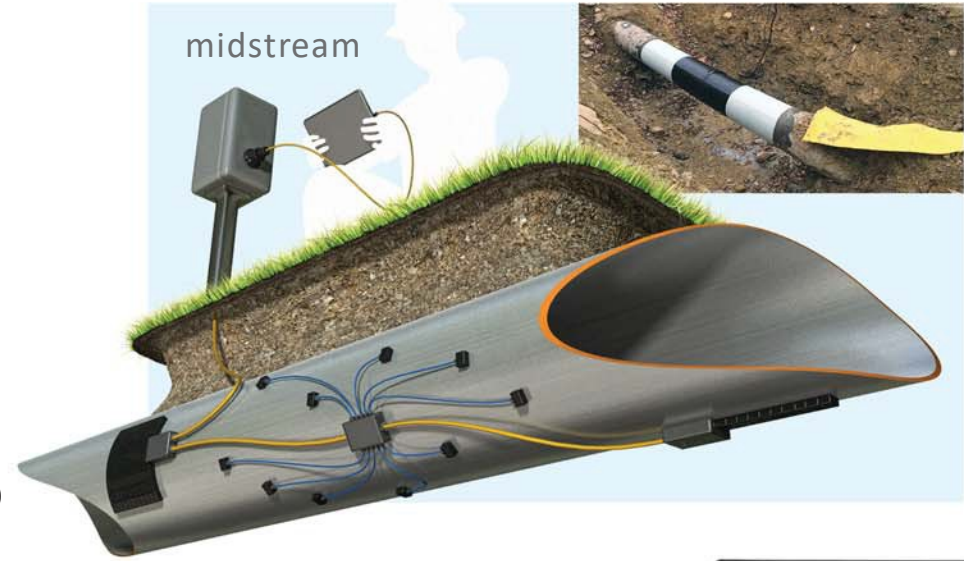


Flexible matPIMS linear or area arrays, with 16 ultrasonic elements can be wrapped around pipes and elbow extrados, with up to 1,000' (305m) of cable.

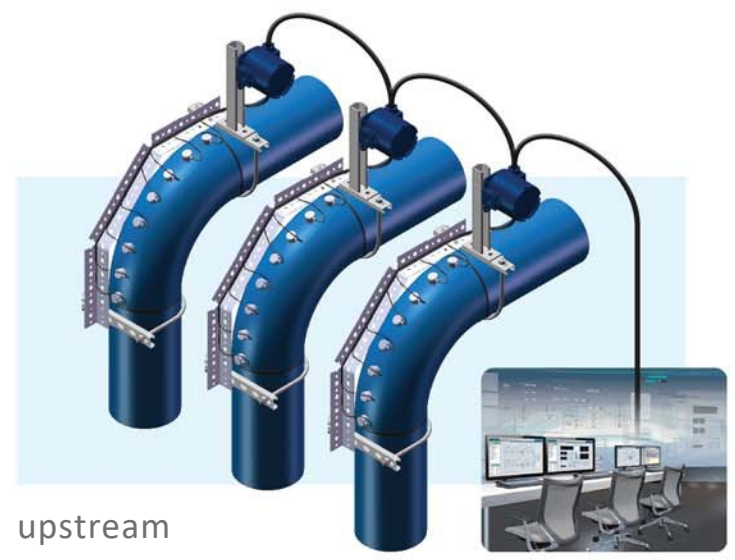
Wired solutions

Best suited for:

- Buried installations
- Integration with plant control systems via Modbus/RS485
- Lowest hardware cost per TML/CML
- Manual, automated and integrated data collection options
- High data-collection frequency (>2X/day) incl. control room
- Data-logging model can take & store 3,000 readings. (batteries req'd)
- Resistance to RF interference



Modbus tablet systems address buried pipe and mobile assets (tanker cars and trailers) that require accurate, repeatable, infrequent measurements.



upstream

Modbus control room systems are ideal for offshore platforms when wired directly into the asset's plant control system or DCS. The installed sensors provide automatic closed-loop monitoring of the production process.

Wireless solutions

Best suited for:

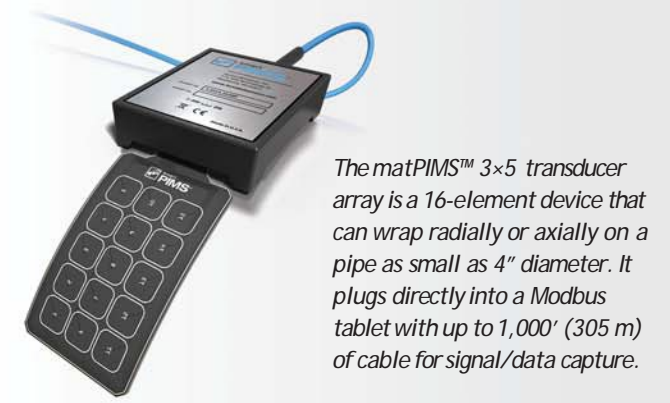
- Situations where wiring is cost prohibitive or impractical
- Fully-automated and integrated data collection
- Measurement intervals less than twice daily
- Periodic repositioning



Cellular systems are battery powered, environmentally sealed, self-contained, CI, D2 safety rated and 100% autonomous. Programmed to turn-on at any desired periodic time interval and powering up to 8 dual-element or 16 single-element probes, the smartPIMS device transmits all data and measurements to the cloud/web portal. These units transmit the data using secure HTTPS-SSL encryption protocols.



midstream

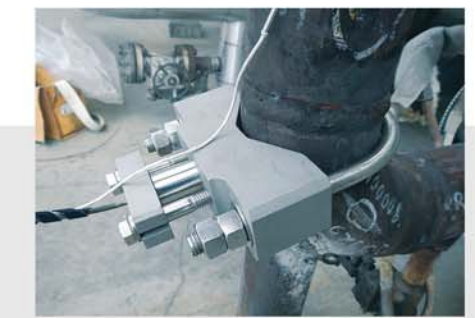


The matPIMS™ 3x5 transducer array is a 16-element device that can wrap radially or axially on a pipe as small as 4" diameter. It plugs directly into a Modbus tablet with up to 1,000' (305 m) of cable for signal/data capture.



SNI's Pit-track™ hardware/software solution can monitor the growth of many individual pits with a high degree of thickness resolution.

downstream



Transducer model XD-201 is an ultra-high temp probe which can operate in 900° F (500° C) continuous-duty service. These probes and their temperature-measuring RTDs are mechanically clamped onto the plant asset.

up to 32 daisy-chained transmitters per cable drop

maximum number of dual-element transducers per transmitter:

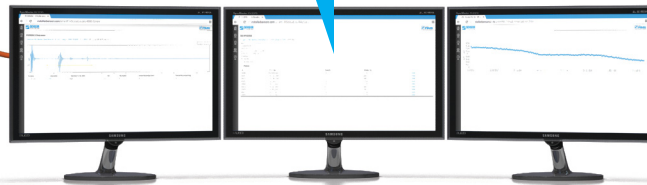
8

networked to control room for continuous remote measurement

direct link to tablet PC for on-demand field datalogging

maximum number of single-element high-temp transducers per transmitter:

16



Remote, Permanently-Installed Wall Thickness Monitoring.

smartPIMS Modbus is an ultrasonic transducer network that can automate wall-thickness measurement and flaw monitoring of your most critical plant assets.

- Installation of up to 512 TMLs (or 256 dual-element probes) on a single multi-drop network.
- View real-time data from any connected tablet PC or your control room.
- Upload for cloud-based data viewing and analysis.

productivity

cost savings

data integrity

safety

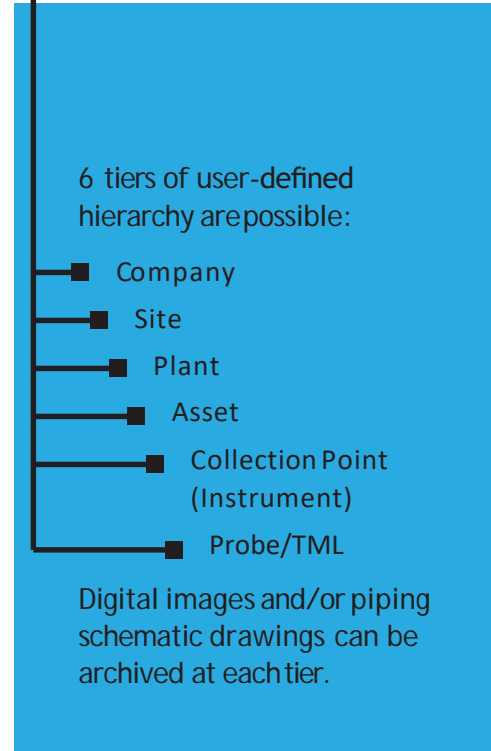
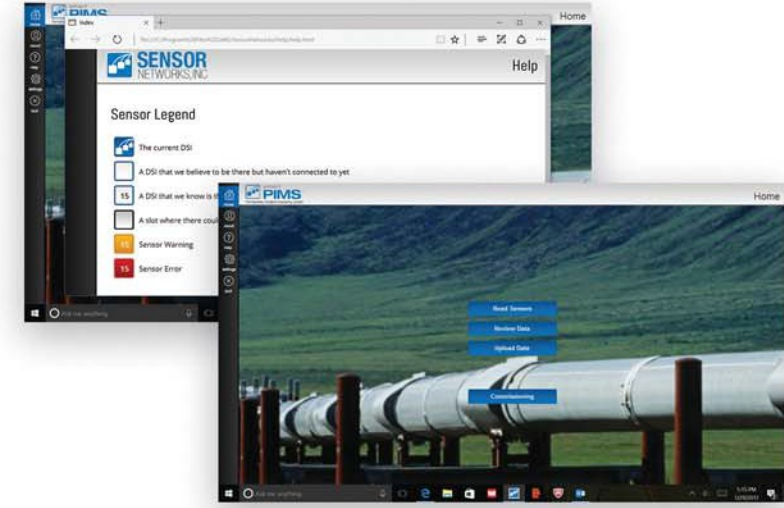
Data Flow & Management

with webPIMS™ and dataPIMS™

AWS-hosted cloud-based data management system for ultrasonic thickness measurements from installed UT sensors.

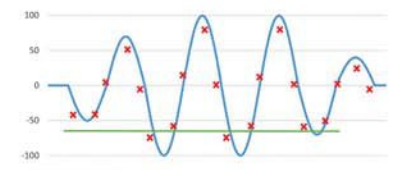
webPIMS can automatically or manually receive data from ultrasonic sensors for web-based display, storage, trending and analysis. Users can access this data from anywhere with an internet-enabled device such as a PC, tablet or smart phone.

An intuitive user's interface allows easy access to stored images or pdf drawings of the actual installed set-up. Temperature sensors at the TMLs record the asset's temperature while software automatically compensates for thermal changes.



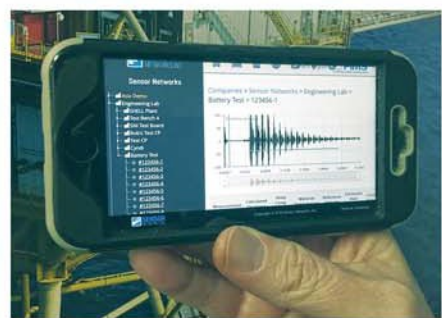
dataPIMS™ software is used for system setup, commissioning, calibration, data-logging, data-uploading and CSV file export.

The smartPIMS & webPIMS products store the digitized RF waveform from every thickness reading. Changes in wall thickness, due to corrosion and/or erosion, can be accurately trended while metal-loss rates are precisely calculated using statistical noise-reduction algorithms. Per-TML alarms can be set for either minimum thickness or a maximum metal-loss rate.

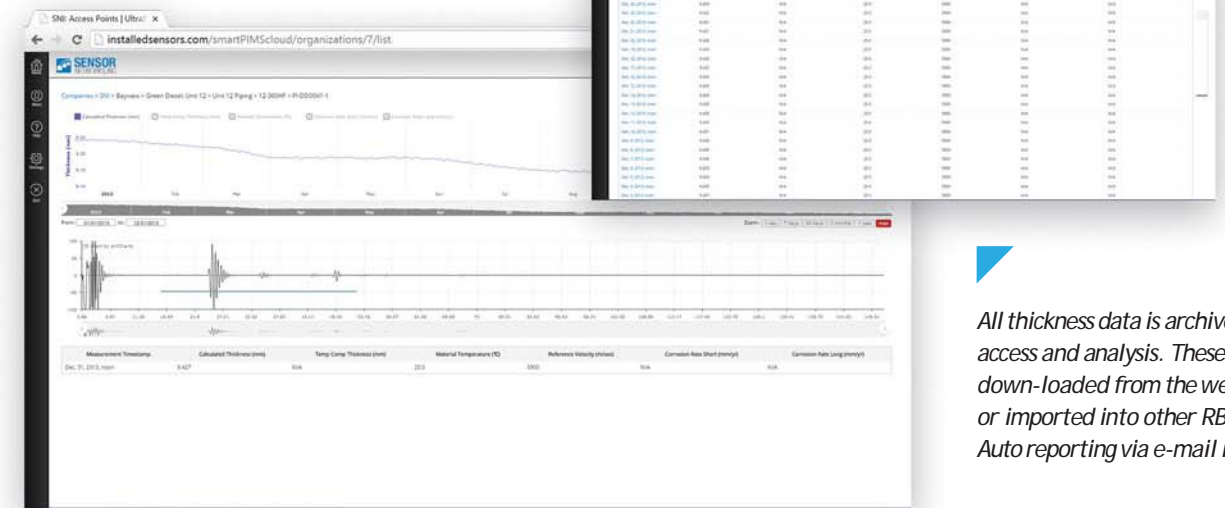


Measurement Timestamp	Asset	Measurement (mm)	Calculated Thickness (mm)	Temp Comp (mm)	Warning Thickness (mm)	Minimum Thickness (mm)	Corrosion Rate (mm/yr)	Corrosion Rate (mm/yr)	Warning Corrosion Rate (mm/yr)	Maximum Corrosion Rate (mm/yr)
Dec 19, 2015, 7:13 a.m.	Asset Name	42300	NA	0.0007	0.0750	NA	NA	NA	NA	NA
Dec 18, 2015, 7:13 a.m.	Asset Name	42300	NA	0.0007	0.0750	NA	NA	NA	NA	NA
Dec 17, 2015, 7:13 a.m.	Asset Name	42300	NA	0.0007	0.0750	NA	NA	NA	NA	NA
Dec 16, 2015, 7:13 a.m.	Asset Name	42300	NA	0.0007	0.0750	NA	NA	NA	NA	NA
Dec 15, 2015, 7:13 a.m.	Asset Name	42300	NA	0.0007	0.0750	NA	NA	NA	NA	NA
Dec 14, 2015, 7:13 a.m.	Asset Name	42300	NA	0.0007	0.0750	NA	NA	NA	NA	NA
Dec 13, 2015, 7:13 a.m.	Asset Name	42300	NA	0.0007	0.0750	NA	NA	NA	NA	NA
Dec 12, 2015, 7:13 a.m.	Asset Name	42300	NA	0.0007	0.0750	NA	NA	NA	NA	NA
Dec 11, 2015, 7:13 a.m.	Asset Name	42300	NA	0.0007	0.0750	NA	NA	NA	NA	NA
Dec 10, 2015, 7:13 a.m.	Asset Name	42300	NA	0.0007	0.0750	NA	NA	NA	NA	NA
Dec 9, 2015, 7:13 a.m.	Asset Name	42300	NA	0.0007	0.0750	NA	NA	NA	NA	NA
Dec 8, 2015, 7:13 a.m.	Asset Name	42300	NA	0.0007	0.0750	NA	NA	NA	NA	NA
Dec 7, 2015, 7:13 a.m.	Asset Name	42300	NA	0.0007	0.0750	NA	NA	NA	NA	NA
Dec 6, 2015, 7:13 a.m.	Asset Name	42300	NA	0.0007	0.0750	NA	NA	NA	NA	NA
Dec 5, 2015, 7:13 a.m.	Asset Name	42300	NA	0.0007	0.0750	NA	NA	NA	NA	NA
Dec 4, 2015, 7:13 a.m.	Asset Name	42300	NA	0.0007	0.0750	NA	NA	NA	NA	NA
Dec 3, 2015, 7:13 a.m.	Asset Name	42300	NA	0.0007	0.0750	NA	NA	NA	NA	NA
Dec 2, 2015, 7:13 a.m.	Asset Name	42300	NA	0.0007	0.0750	NA	NA	NA	NA	NA
Dec 1, 2015, 7:13 a.m.	Asset Name	42300	NA	0.0007	0.0750	NA	NA	NA	NA	NA

webPIMS data can be easily accessed from any mobile device or smartphone.



Executive Summary view shows the GPS location of your assets, the in-or-out-of-spec status and an exportable tabular summary with time /date stamp and temperature status. Ultrasonic test data can be automatically uploaded to this cloud app via SNI's cellular smartPIMS device, at any periodic time interval or manually via the tablet-based Modbus system.



All thickness data is archived for easy future access and analysis. These files can be down-loaded from the web for further analysis or imported into other RBI software platforms. Auto reporting via e-mail is easily set-up.



specifications

cellular

transmitter

type cellular (3G/4G-LTE)
 encryption type SSL
 model no. smartPIMS Cell
 battery type Li D-cell, 3.6 VDC, qty. 2
 battery life 5 years (typical, based on 1 reading/day)
 ultrasonic system
channels 16 ultrasonic, 1 temperature
pulser voltage ±5V bipolar square wave
analog frequency 1-10 MHz (-3dB)
gain -10dB to +70dB
digitizer frequency 40 Msps
certification Class 1, Div. 2
 enclosure
type instrumentation housing
material aluminum
rating NEMA 4X, IP66
temperature range -4°F to +140°F (-20°C to +60°C)
dimensions 5.44" × 5.59" × 5.11" (138 × 140 × 130mm)
weight 5.2 lbs. (2.36 kg)

Modbus

transmitter

model no. smartPIMS Modbus and Modbus DL
Modbus DL with batteries can collect and store 3,000 thickness readings.
 protocol Modbus
 communication RS-485, 2-wire, max. 1000' (305m)
 power 10-20 VDC
 ultrasonic system and enclosure [same as cellular model]

tablet datalogger

performance
processor . . . Intel i5-4200U 1.6GHz w/ 3MB L3 cache (dual-core)
memory 8 GB RAM
storage M2-SATA SSD, 64 GB
operating system Windows 10

connections network power, data via RS-485-to-USB adapter

physical
drop/shock resistance MIL-STD-810G
environmental IP65, 14-131°F (-10 to +55 °C)
dimensions/weight 11.4" × 7.48" × 0.78" / 2.73 lbs.

transducers

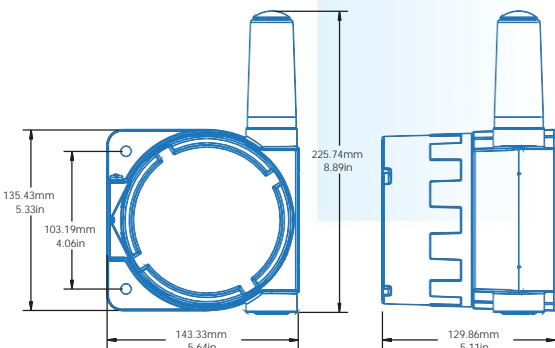
transducer cable

type CO-ax, ¼" dia.
 maximum length to transducer standard 10' (3.0m), custom to 50' (15.2m)

transducers

	single-element contact	dual-element contact	delay-line contact	matPIMS
<i>model</i>	XD-101	XD-301	XD-201	XD-401
<i>application</i>	general purpose	severe pitting	ultra-high temp	general wall loss
<i>frequency</i>	5 MHz	5 MHz	7 MHz	7.5 MHz
<i>active area (dia.)</i>	0.25" / 6.35mm	0.375" / 10mm	0.375" / 10mm	0.25" / 6.35mm
<i>overall (dia. x h)</i>	1.0 × 1.0" 25.4 × 25.4 mm	0.75 × 0.75" 19 × 19 mm	0.8 × 2.25" 20.3 × 57.2 mm	1.0 × 9.12" 25.4 × 231.6 mm
<i># of transducers</i>	1-16	1-8	1-16	16 (1 reference, 15 active)
<i>resolution</i>	0.001" / 0.025mm	0.001" / 0.025mm	0.001" / 0.025mm	0.001" / 0.025mm
<i>thickness range*</i>	0.200-6.0" 5.1-150.0mm	0.040-6.0" 1.0-150.0mm	0.125-1.0" 3.0-25.0mm	0.125-6.0" 3.0-150.0mm
<i>temp range</i>	-5 to +150 °F -20 to +80 °C	-5 to +300 °F -20 to +150 °C	-5 to +932 °F -20 to +500 °C	-5 to +150 °F -20 to +80 °C
<i>attachment</i>	magnet/adhesive	magnet/adhesive	mechanical clamp	adhesive

*minimum resolutions stated as typical values, but will vary with pipe condition



Sensor Networks®, smartPIMS®, webPIMS™, matPIMS™, dataPIMS™ and Pit-Track™ are trademarks of Sensor Networks, Inc. ©2017. All rights reserved.

