

# RISER DOORS



# PERFORMANCE & QUALITY

CNC manufactured to order in the UK to international standards.

Whether you are the designer, the contractor, or responsible for maintenance of the building, Profab Access Riser Doors meet all of your demands. Security, Fire Protection, Functionality & Led by Design to be aesthetically discreet.

A full portfolio of doors with lock and frame options, and excellence in bespoke design to solve all of your access requirements without compromise.

Quality at the core of the business and leading the field in accreditation.

## CERTIFIRE® TESTED TO 4 HOURS



## 4000 SERIES

60•120•240

TRUSTED PERFORMANCE

Exova Warrington Certificate

UL Labs Chicago



### BENEFITS

- ❑ Fast & Simple to Install
- ❑ Seamless Aesthetic Finish
- ❑ Even Frame/Door Gap Adjustment
- ❑ Single, Double & Multi-Leaf Configurations
- ❑ Fully Recyclable at End Of Life

### STANDARD FEATURES

- ❑ Certifire Fire Rated to 240 Minutes
- ❑ UL Labs Certificated to 120 Minutes
- ❑ 35dB Acoustic Shielding as Standard
- ❑ Airtight to Part L
- ❑ Frame Construction: 1.5mm Zintec Steel
- ❑ Door Construction: 1.2mm Zintec Steel
- ❑ Rockwool Core Door Leaf
- ❑ Intumescent Smoke Seal
- ❑ Fully Welded Rigid Box Section Frame
- ❑ Multi-Point Locking
- ❑ Concealed Continuous Piano Hinge
- ❑ Fully Polyester Powder Coated Matt RAL 9010
- ❑ Suitable for Finishing On-Site

### OPTIONS

- ❑ 36, 42 and 44dB Acoustic Upgrades (ACU)
- ❑ Up to 80 Minutes Insulation
- ❑ Choice of Frame Profiles to suit Finishing Requirements
- ❑ Flush Frame Skirting Profile
- ❑ Shadow Gap Frame Profiles
- ❑ 2 or 3 Point Multi Locking
- ❑ Visible or Concealed Escutcheon
- ❑ Left or Right Handed Opening
- ❑ Removable Safety Handrails to BS6180:2011 (SHR)
- ❑ Door Closers

### BIM LEVEL 2

Profab Access riser doors are available to download now as objects for use in your current and future projects.



NBS National BIM LIBRARY

BF-3HS-SD-SHR



PF-2PL-SD-SHR

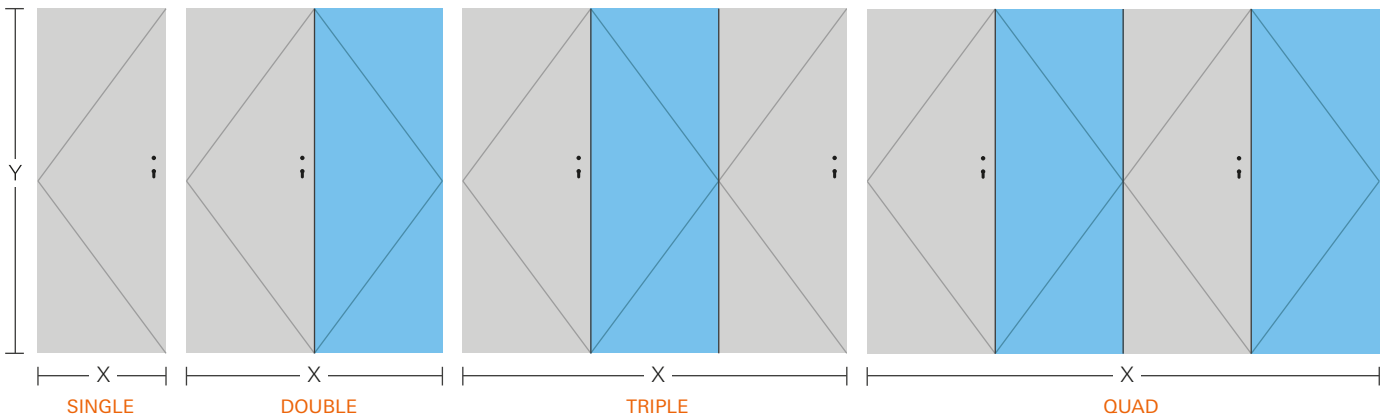


DPF-3HS-SD-ACU44



## TYPICAL RISER DOOR CONFIGURATIONS

Full height single, double, triple & quad door leaf sets. Maximum door leaf size: 1.0m x 3.1m for 120 minutes fire rating, CERTIFIRE certification.



X & Y: Specified As Outer Frame Measurements

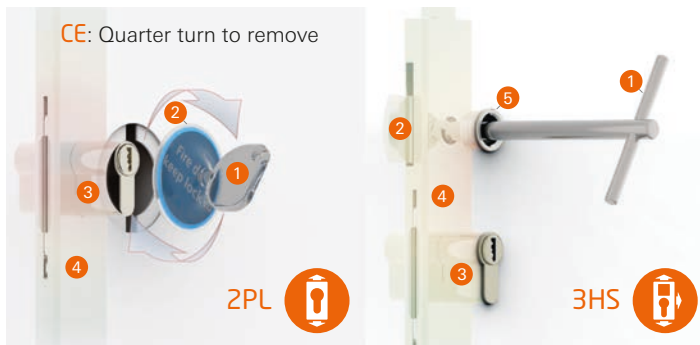
Y: Hinge Side

■ Locking Door Leaf

■ Non-Locking Door Leaf

## MULTI-POINT LOCKING OPTIONS

Euro Profile cylinder locks are employed throughout our range of TRUSTED ACCESS SOLUTIONS riser doors, to prevent unauthorised access.



### 2PL: TWO POINT LOCKING

- 1 Suction Cup
- 2 CE: Concealed Escutcheon Plate (Patent Pending)
- 3 Euro Profile Cylinder Lock
- 4 Locking Assembly: Engages Top & Bottom

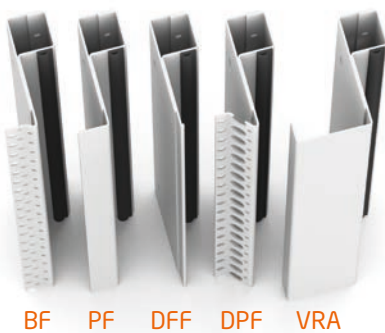
### 3HS: THREE POINT HIGH SECURITY LOCKING

- 1 T Bar Key: Used to Unlatch & Pull Door Leaf Open
- 2 Secondary Locking
- 3 Euro Profile Cylinder Lock
- 4 Locking Assembly: Engages Top, Bottom & Lock Side
- 4 Stainless Steel Collar (White Plastic Plug Removed)

## FRAME PROFILE OPTIONS

A comprehensive choice of frame profiles are available as standard to suit all wall finishes.

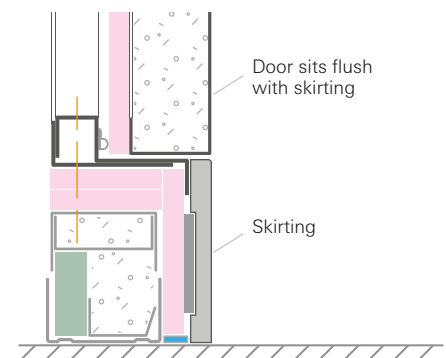
All FRAME DEPTHS: 91.5mm **S** Standard frame **O** Optional frame



### TO SUIT APPLICATION

- BF: Beaded Frame **S**  
*Ideal for Tape and Jointing/Skimming*
- PF: Picture Frame **S**  
*Ideal for Retro Fitting/Finished Areas*
- DFF: Dutch Folded Frame **O**  
*Ideal for Masonry/Blockwork*
- DPF: Deep Plaster Frame **O**  
*Ideal for wet plastering/float and set*
- VRA: Visible Raised Architrave **O**  
*Ideal for Retro Fitting/Finished Areas and Creating Shadow Gaps*

FLUSH TO SKIRTING PROFILE OPTION  
AVAILABLE UPON REQUEST



## SAFETY HANDRAILS OPTION

Option where void cavity presents a danger to service maintenance.



### SHR

Each handrail is secured with 4 fixing bolts for strength.  
Allow 45mm in addition to standard frame depth where fitted.


SPECIFY AS DESIRED

## SIZE INFORMATION

Profab Access Riser Doors are manufactured to suit your requirements. Our team will assist you to determine the correct specification and dimensions for your project.


*Please Note:*  
Product design is subject to change and may not be identical to those pictured.

## SALES/TECHNICAL ENQUIRIES

 +44 (0)1827 719 051

 [technical@profabaccess.com](mailto:technical@profabaccess.com)

## CONNECT WITH US

 [profabaccess.com](http://profabaccess.com)

 [profabaccesspanels](https://www.facebook.com/profabaccesspanels)

 [@accesspanels](https://twitter.com/accesspanels)

Profab Access Ltd  
Unit C-D  
Riversdale House  
Riversdale Road  
Carlyon Road Ind Est  
Atherstone  
Warwickshire  
UK  
CV9 1FA



FS 668263  
ISO 9001 & ISO 14001

