



 **HOWE GREEN**

Quality Access Covers for Floor, Wall and Ceiling



HSE 75 series

Bluewater



7500 series

Manchester United



1050 series

Royal Exchange



5000 series

Ely Cathedral



7500 series
Colouredge

Stormont Castle

Contents

An introduction to Howe Green	1
Access Covers product overview	2-3

Access Covers for hard floors	4-5
2500 Series	6-7
3500 Series	6-7
5000 Series	8-11
7500 Series	12-15
1050 Series	16-17
HSE 75 Series	18-19
5 Bar Series	20-21
Colouredge	20-21

Access Covers for flexible floors	22-23
Visedge	24-25
Visedge DS	26-27
Visedge VR	26-27

Access Covers for walls and ceilings	28-29
Waldor 50	30-31
Tile-A-Door+	30-31
Maghatch	32-33
Combihatch	32-33

Installation guides and sitework details	
Access Covers for hard floors	34
Access Covers for flexible floors	35
Access Covers for walls and ceilings	36

Case Study	37
Special orders	38

Channel Drain Solutions	39
--------------------------------	-----------

Floor access cover maintenance	
Cover Skate	40

An introduction to Howe Green

Howe Green is a leading manufacturer of fabricated metal floor, wall and ceiling access covers providing innovative, practical, economical solutions for accessing concealed services in floors, walls and ceilings.

The company has developed a respected brand name and a worldwide reputation for quality, customer care and service. For over 30 years Howe Green has been at the forefront of design and innovation in the highly specialised architectural building products sector. We supply premium quality aluminium and stainless steel access covers for a range of applications to a diversity of customers. Our aim is simple - to provide building services professionals with an innovative, practical solution to resolve the problem of accessibility to concealed services, quickly, safely and cost effectively.

Howe Green access covers can be found in all types of locations including airports, factories, hospitals, hotels, offices, railway stations, schools, shopping centres, universities, sports stadiums, swimming pools and conservatories.

Why work with Howe Green?

Expertise

Our expertise in the floor access cover market has evolved from "hands on" knowledge of working with Terrazzo flooring. This practical experience has given Howe Green a real understanding of the constraints that architects, designers, engineers and building services professionals have to work within. Our products have been designed to provide customers with innovative, practical solutions to everyday problems.

You require easy and cost effective access to concealed services. Access that looks good, complies with Health and Safety regulations, fulfils the building owner's duty of care and has been manufactured with due consideration of the environment.

Howe Green has the expertise to meet your requirements.

Quality

Quality remains at the heart of Howe Green's manufacturing process. Quality is maintained through the use of the best materials, investment in plant and equipment, the continuous review and refinement of production processes and the operation of strict quality guidelines and rigorous testing. Much of our product development is customer driven. Precision manufacturing to order ensures that you never have to "make do", we will manufacture to your exact specification with no time or cost penalty.

Quality is never an issue at Howe Green.

Service

Design innovation, product quality, technical support and customer service are the essential elements of the Howe Green service package. By focusing on providing

flexibility in these key areas and following a "can do" culture we can ensure we meet the particular demands of individual customers.

Relationships are important to us and trust is the foundation of any relationship. Howe Green customers know they can trust us, we can be relied upon to deliver, to respond to their requirements and to offer a truly flexible service.

With Howe Green it is all about you!

Values

Howe Green is a family business and has been built on the traditional values of respect, trust and honesty. These values form the foundation for all activities undertaken within the business. Our team and network of suppliers are valued and respected, we work together to ensure the best possible products and service are delivered to our customers - every day.

Enjoy a working relationship with Howe Green built on respect, trust and honesty.

Environment

We are committed to protecting the environment and try to ensure the materials we use and our manufacturing processes have minimal environmental impact.

By keeping informed of developments and trends in green building design and refurbishment Howe Green can apply this knowledge to the issue of energy efficiency and sustainability at the point of product design.

Howe Green takes a proactive approach to environmental issues.

Access cover product overview

Cover type	Typical finishes	Performance	Depth	Options	Min. size	Max. size
Floor Access Covers						
2500 series Stainless Steel access cover trims	Solid hardwood floors Timber strip flooring Heavy duty laminate flooring	Light duty Pedestrian Trolley load	25mm (1")	Single cover	150 x 150mm (6 x 6")	900 x 900mm (35 ⁷ / ₁₆ x 35 ⁷ / ₁₆ ")
3500 series Aluminium cover	All types of hard floor finish: Ceramic tiles, Marble, Terrazzo, Concrete, Resin, Parquet floors	Light duty Pedestrian Trolley load	35mm (1 ³ / ₈ ")	Single cover Duct covers	100 x 100mm (4 x 4") 100mm (4") span	250 x 250mm (9 ⁷ / ₁₆ x 9 ⁷ / ₁₆ ") 200mm (8") span, any length
5000 series Aluminium cover	All types of hard floor finish: Ceramic tiles, Marble, Terrazzo, Concrete, Resin, Parquet floors	Light duty Pedestrian Trolley load	50mm (2")	Single cover Duct covers Multipart covers	150 x 150mm (6 x 6") 100mm span (4") As required	750 x 750mm (29 ¹ / ₂ x 29 ¹ / ₂ ") 600mm span, (23 ³ / ₈ ") any length As required
5000 series Stainless Steel cover	All types of hard floor finish: Ceramic tiles, Marble, Terrazzo, Concrete, Resin, Parquet floors	Light duty Pedestrian Trolley load	50mm (2")	Single cover Duct covers Multipart covers	150 x 150mm (6 x 6") 100mm span (4") As required	750 x 750mm (29 ¹ / ₂ x 29 ¹ / ₂ ") 600mm span, (23 ³ / ₈ ") any length As required
7500 series Aluminium cover	All types of hard floor finish: Ceramic tiles, Marble, Terrazzo, Concrete, Resin, Parquet floors	Medium duty Up to 5 tonne wheel load	75mm (3")	Single cover Duct cover Multipart covers	150 x 150mm (6 x 6") 100mm span (4") As required	900 x 900mm (35 ⁷ / ₁₆ x 35 ⁷ / ₁₆ ") 900mm span, (35 ⁷ / ₁₆ ") any length As required
7500 series Stainless Steel cover	All types of hard floor finish: Ceramic tiles, Marble, Terrazzo, Concrete, Resin, Parquet floors	Medium duty Up to 5 tonne wheel load	75mm (3")	Single cover Duct cover Multipart covers	150 x 150mm (6 x 6") 100mm span (4") As required	900 x 900mm (35 ⁷ / ₁₆ x 35 ⁷ / ₁₆ ") 900mm span, (35 ⁷ / ₁₆ ") any length As required
1050 series Stainless Steel cover	All types of hard floor finish including external grade paving slabs such as granite and concrete	Heavy duty 6.5 tonne wheel load	105mm (4 ¹ / ₈ ")	Single cover Duct cover Multipart covers	150 x 150mm (6 x 6") 150mm span (6") As required	900 x 900mm (35 ⁷ / ₁₆ x 35 ⁷ / ₁₆ ") 900mm span, (35 ⁷ / ₁₆ ") any length As required
HSE 75 series Hinged Aluminium cover	All types of hard floor finish: Ceramic tiles, Marble, Terrazzo, Concrete, Resin, Parquet floors	Medium duty Up to 5 tonne wheel load	75mm (3")	Single cover Duct cover	550 x 550mm (21 ³ / ₈ x 21 ³ / ₈ ") 550mm span (21 ³ / ₈ ")	1000 x 1000mm (39 ³ / ₈ x 39 ³ / ₈ ") 900mm span (35 ⁷ / ₁₆ ")
HSE 75 series Hinged Stainless Steel cover	All types of hard floor finish: Ceramic tiles, Marble, Terrazzo, Concrete, Resin, Parquet floors	Medium duty Up to 5 tonne wheel load	75mm (3")	Single cover Duct cover	550 x 550mm (21 ³ / ₈ x 21 ³ / ₈ ") 550mm span (21 ³ / ₈ ")	1000 x 1000mm (39 ³ / ₈ x 39 ³ / ₈ ") 900mm span (35 ⁷ / ₁₆ ")

Cover type	Typical finishes	Performance	Depth	Options	Min. size	Max. size
Floor Access Covers						
5 Bar series aluminium tread plate covers	All types of hard floor finish: Ceramic tiles, Marble, Terrazzo, Concrete, Resin	Light duty Pedestrian Trolley load	50mm (2")	Single cover Duct covers	150 x 150mm (6 x 6") 150mm span (6")	1000 x 1000mm (39 ³ / ₈ x 39 ³ / ₈ ") 1000mm span, (39 ³ / ₈ ") any length
Visedge series Aluminium cover	All types of flexible flooring: Vinyl, Linoleum, Rubber, Some carpets	Light duty Pedestrian Trolley load	50mm (2")	Single cover Duct covers Multipart covers	150 x 150mm (6 x 6") 150mm span (6") As required	1000 x 1200mm (39 ³ / ₈ x 47 ¹ / ₈ ") 1000mm span, (39 ³ / ₈ ") any length As required
Visedge DS series Aluminium securing edge trim	Suitable for flexible sheeting, such as vinyl and linoleum, and for hard paving, such as ceramic tiles. Securing trim with weldable pvc edge designed to enable two differing floor finishes, such as vinyl and terrazzo to be finished flush.	Light duty Pedestrian Trolley load		Supplied in packs of 5		2 metre lengths (78 ¹ / ₂ ")
Visedge DS series Aluminium securing edge trim	Suitable for flexible sheeting, such as vinyl and linoleum, and for hard paving, such as ceramic tiles. Designed to protect the edge of the final flooring when it has been laid on top of another surface.	Light duty Pedestrian Trolley load		Supplied in packs of 5		2 metre lengths (78 ¹ / ₂ ")
Wall Access Covers						
Waldor 50 Stainless Steel wall access cover	Tiled walls	New build and refurbishment	50mm (2")		300 x 300mm (11 ³ / ₈ x 11 ³ / ₈ ")	900 x 600mm (35 ⁷ / ₁₆ x 23 ³ / ₈ ")
Tile-A-Door+ Removable wall access cover	Tiled walls	New build and refurbishment	24 mm (1 ¹ / ₈ ")			0.16 m ² (1.7ft ²)
Maghatch Steel Wall access hatch	Plaster walls	New build and refurbishment	1.2mm (¹ / ₈ ")		210 x 210mm, (8 ¹ / ₈ x 8 ¹ / ₈ ") removeable panel 150 x 150 mm (6 x 6")	As required, removable panel 250 x 250 mm (9 ⁷ / ₈ x 9 ⁷ / ₈ ")
Combihatch Mild Steel Wall access panel	Plaster walls	New build and refurbishment	70mm (2 ³ / ₈ ")	Single leaf non-fire rated Double leaf non-fire rated Single leaf fire rated Double leaf fire rated	300 x 300mm (11 ³ / ₈ x 11 ³ / ₈ ") 300 x 300mm 300 x 300mm	1000 x 1000mm (39 ³ / ₈ x 39 ³ / ₈ ") 1000 x 1000mm 1026 x 662mm (40 ³ / ₈ x 26 ¹ / ₈ ") 756 x 756mm (29 ³ / ₈ x 29 ³ / ₈ ") 1026 x 600mm (40 ³ / ₈ x 23 ³ / ₈ ")
Ceiling Access Covers						
Combihatch Mild Steel Ceiling access panel	Plaster ceilings	New build and refurbishment	70mm (2 ³ / ₈ ")	Single/Double leaf non-fire rated Single leaf fire rated	300 x 300mm (11 ³ / ₈ x 11 ³ / ₈ ") 300 x 300mm (11 ³ / ₈ x 11 ³ / ₈ ")	1000 x 1000mm (39 ³ / ₈ x 39 ³ / ₈ ") 900 x 600mm (35 ⁷ / ₁₆ x 23 ³ / ₈ ")

Floor access covers for hard floor finish

Every type of hard flooring finish can be accommodated within the range of Howe Green floor access covers including ceramic tiles, marble, terrazzo, resin and parquet and even external grade finishes such as paving slabs, granite and concrete.

Features and benefits

Materials

The majority of the Howe Green range of floor access covers for hard floor finishes can be manufactured in either aluminium or stainless steel, giving you the freedom to choose the material most suitable to your particular project.

Configuration

To ensure total versatility our floor access covers can be used singly, in continuous runs as duct covers or over large areas as a multipart cover.

Sizes

Howe Green floor access covers are custom made to your exact specification, between stated maximum and minimum sizes. Our investment in plant and equipment ensures custom made products can be manufactured without incurring a time or cost surcharge – to save you time and money.

Tolerances In Accordance With BS EN 22768-1:1993 - ISO 2768-1: 1989 - Class C.

Quality

Every aspect of our floor access covers has been designed and manufactured with quality in mind: Covers are precision made to avoid distortion. Lifting blocks are anchored to the inner frame. Stainless steel securing bolts are stiletto heel proof. Top edge seal on aluminium covers helps prevent dirt, grout or grinding waste ingress. Base plates and reinforcement are galvanised steel to resist corrosion, contact our Technical Department if products are to be used in a corrosive environment such as swimming pools.

Fitting

Quick and easy to install ensuring minimum disruption, full installation instructions provided. Access to network of skilled installation experts is available if required.

Easy access

Howe Green floor access covers provide easy access to under floor services using lifting keys to remove the access cover. Cover sections are tapered for easy removal and frame sections give good key to bedding mortar.

Load bearing capacities

Various load bearing capacities, from light duty or pedestrian to a heavy duty pneumatic wheel loading, up to 6.5 tonne, ensure the suitability of the Howe Green range of access covers whatever the location.

Fire ratings

Fire ratings up to three hours are available on most floor access covers.

Weight

The weight of the access cover should be taken into account where ease of handling is an important consideration. In all cases reference should be made to the Manual Handling Operations Regulations 1992, which implement European Directive 90/269/EEC. If loads are excessive, consideration should be given to the use of hydraulic lifters, or our HSE 75 range.

HSE 75 Series is a gas spring assisted hinged access cover designed specifically for situations where either frequent access is required or ease of handling is critical.

Optional extras

In order to give you exactly the floor access cover you require a number of optional extras are available:

Double seals on the 5000, 7500, 1050 and HSE 75 series to provide the highest levels of hygiene and security.

Brass, stainless steel or coloured high impact pvc show edges on aluminium 5000 and 7500 series ensure aesthetic choice.

Underside release hatch available on HSE 75 series.

2500 Series

Stainless Steel Single Cover Trims - Pages 6-7

Floor access covers trims for pedestrian traffic



2500 Series

3500 Series

Aluminium Single Cover/Duct Cover - Pages 6-7

Floor access covers for pedestrian traffic



3500 Series

5000 Series

Aluminium Single Cover/Duct Cover/Multipart Cover - Pages 8-9

Stainless Steel Single Cover/Duct Cover/Multipart Cover - Pages 10-11

Floor access covers for pedestrian traffic



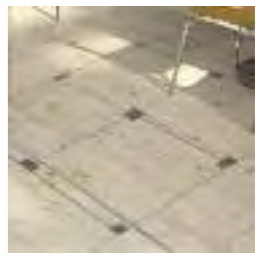
5000 Series

7500 Series

Aluminium Single Cover/Duct Cover/Multipart Cover - Pages 12-13

Stainless Steel Single Cover/Duct Cover/Multipart Cover - Pages 14-15

Floor access covers for cars and light delivery vehicles



7500 Series

1050 Series

Stainless Steel Single Cover/Duct Cover/Multipart Cover - Pages 16-17



1050 Series

HSE 75 Series

Aluminium Single Cover/Duct Cover - Pages 18-19

Stainless Steel Single Cover/Duct Cover - Pages 18-19

Hinged floor access covers for cars and light delivery vehicles



HSE 75 Series

5 BAR Series

Aluminium Tread Plate Covers - Pages 20-21

Tread plate covers for pedestrian traffic

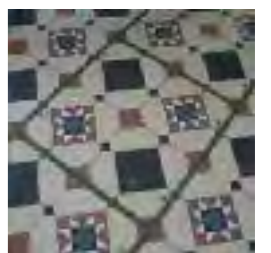


5 BAR Series

Colouredge

Pages 20-21

High impact pvc show edge to blend with the flooring



Colouredge

Typical specification clause for 2500 series

Recessed floor access / duct* cover and frame trims shall be Howe Green Ltd 2500 series manufactured from stainless steel and fitted with stainless steel securing bolts. Overall outer frame sizes shall be† mm x† mm. Covers are to be supplied with† sets of combined lifting/securing keys. All to be manufactured and supplied by Howe Green Ltd, Marsh Lane, Ware, Hertfordshire, SG12 9QQ, Great Britain, and installed in accordance with the manufacturer's installation details and sitework guide.

* Delete as appropriate. † Insert appropriate numbers & quantities

2500 Series

Stainless Steel Single Cover Trims

Floor access covers trims for pedestrian traffic



2500 Series

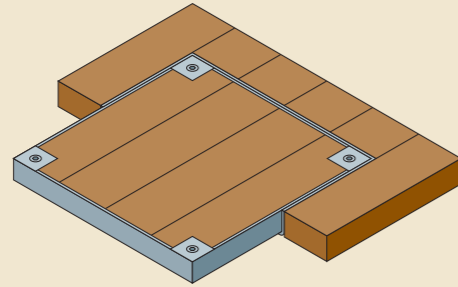
Single Cover

Typical floor finishes

All types of heavy duty timber floors.

Performance

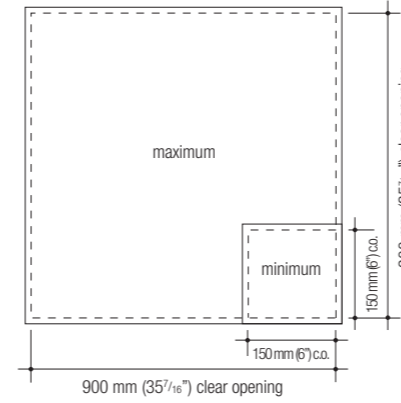
Pedestrian traffic (including wheeled trolleys, sack trucks etc.) only.



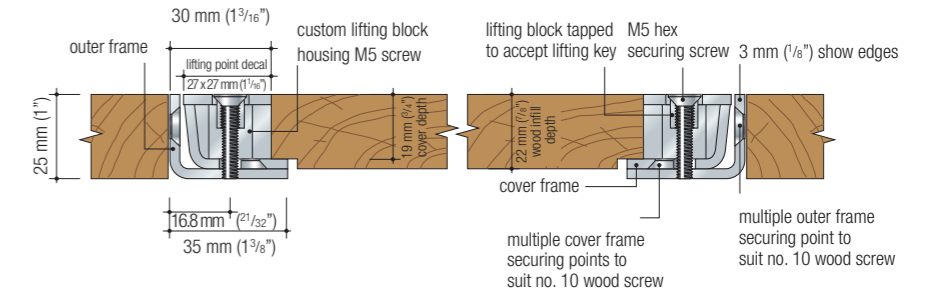
Size

Overall frame size = clear opening + 70 mm (2 3/4").
e.g. 250 x 250 mm (9 7/8 x 9 7/8") clear opening = 320 x 320 mm (12 5/8 x 12 5/8") overall frame.

Maximum / minimum sizes



Cross section showing timber sub-floors



Typical specification clause for 3500 series

Recessed floor access / duct* covers and frames shall be Howe Green Ltd 3500 series with aluminium show edge, dirt seal and mechanically jointed corners, galvanised baseplate sealed on seating with socket head securing bolts/ unsealed with blanking bolts*. Sizes shall be as shown on contract drawings nos† Covers are to be supplied complete with† sets of combined lifting/securing keys. All to be manufactured and supplied by Howe Green Ltd, Marsh Lane, Ware, Hertfordshire, SG12 9QQ, Great Britain, and installed in accordance with the manufacturer's installation details and sitework guide.

* Delete as appropriate. † Insert appropriate numbers & quantities

3500 Series

Aluminium Single Cover/Duct Cover

Floor access covers for pedestrian traffic



3500 Series

Single Cover

Typical floor finishes

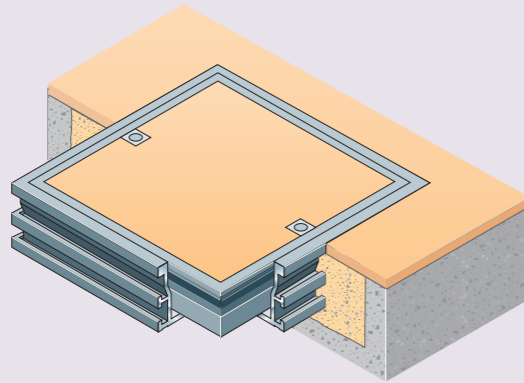
Ceramic tiles, marble, terrazzo, concrete, resin, wood and all hard floors.

Performance

Pedestrian traffic (including wheeled trolleys, sack trucks etc.) only.

Options

Sealed and secured.



Size

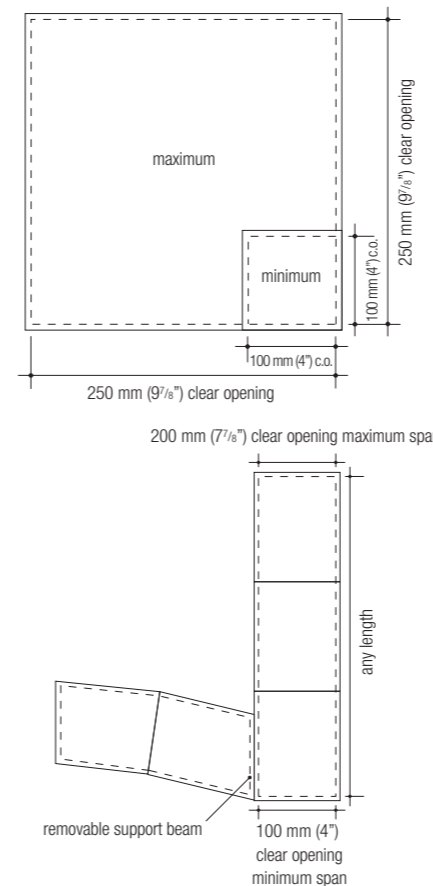
Overall frame size = clear opening + 97 mm (3 7/8").
e.g. 200 mm (7 7/8") clear opening = 297 mm (11 11/16") overall frame width.

Weight

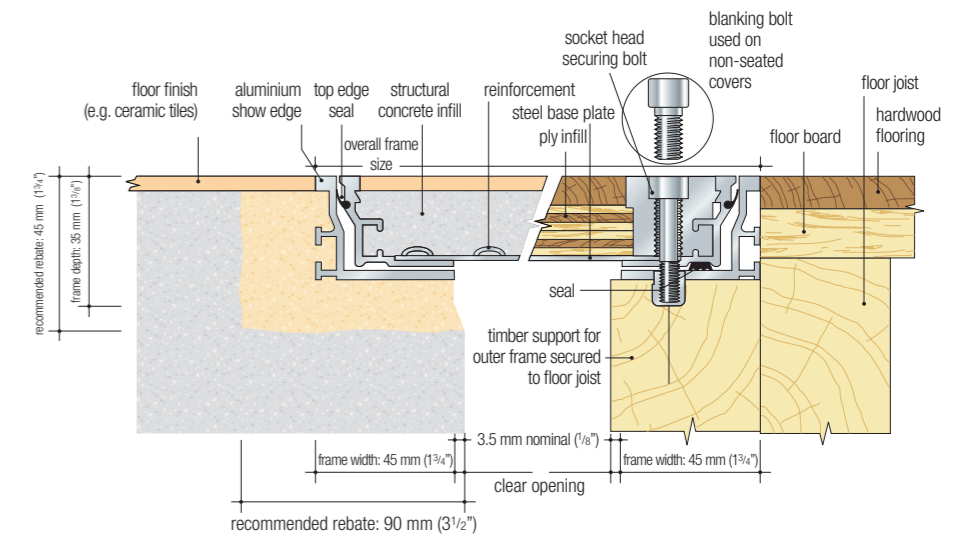
A 3500 series cover when filled with concrete weighs approx. 60 kg/m² (12 1/2 lbs/ft²).

See installation guide on page 34.

Maximum / minimum sizes



Cross section showing concrete and timber sub-floors



Typical specification clause for 5000 series

Recessed floor access / duct / multipart* covers and frames shall be Howe Green Ltd 5000 series with 1 hour fire rating to BS 476: Part 20: 1987, continuously fastened aluminium / brass / Colouredge*, top edge dirt seal and mechanically jointed corners, galvanised baseplate and reinforcement, double sealed with socket head securing bolts/unsealed with blanking bolts*. Sizes shall be as shown on contract drawings nos† Covers to be supplied complete with† sets of combined lifting / securing keys. All to be manufactured and supplied by Howe Green Ltd, Marsh Lane, Ware, Hertfordshire, SG12 9QQ, Great Britain, and installed in accordance with the manufacturer's installation details and sitework guide.

* Delete as appropriate. † Insert appropriate numbers & quantities

5000 Series

Aluminium Single Cover/Duct Cover/Multipart Cover

Floor access covers for pedestrian traffic



5000 Series

Single Cover

Typical floor finishes

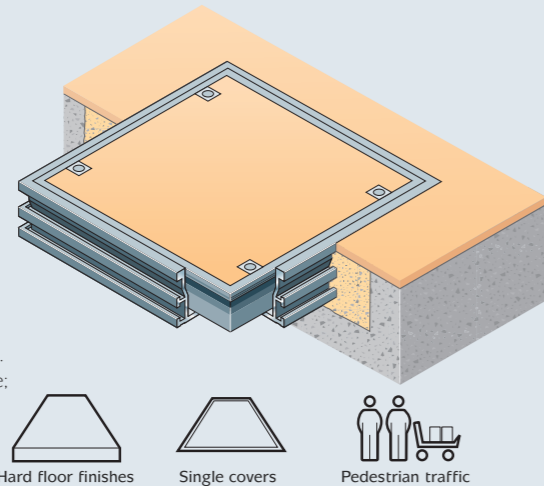
Ceramic tiles, marble, terrazzo, concrete, resin, wood and all hard floors.

Performance

Pedestrian traffic (including wheeled trolleys, sack trucks etc.) only.

Options

Every cover is available with a choice of aluminium or brass show edge, and matching lifting blocks, or Colouredge high impact pvc edges with aluminium lifting blocks (see website). Double seal. 1 hour fire rating to BS 476: Part 20: 1987 available; ask for indicative test report.



Size

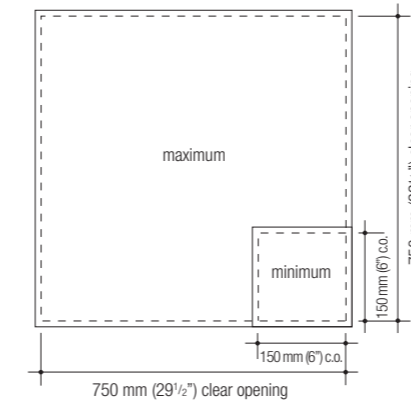
Overall frame size = clear opening + 120 mm (4 3/4").
e.g. 600 x 600 mm (23 3/8" x 23 3/8")
clear opening = 720 x 720 mm (28 3/8" x 28 3/8")
overall frame.

Weight

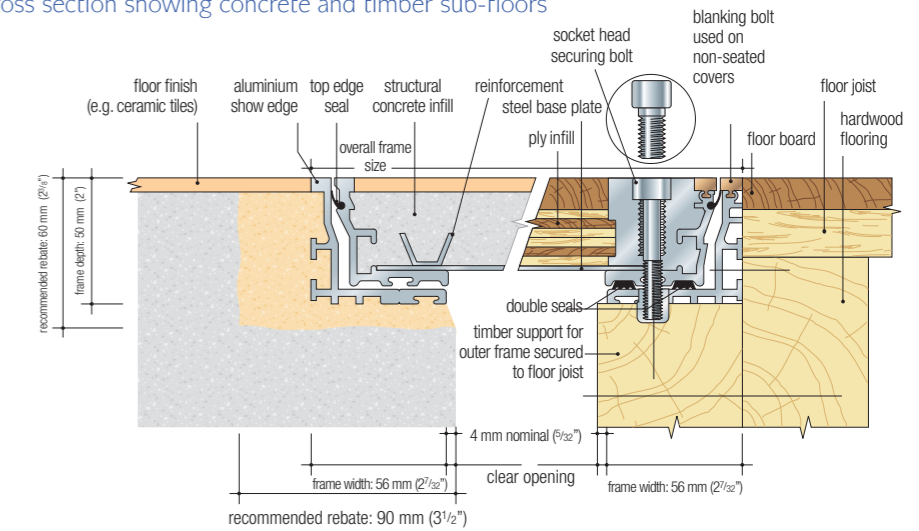
A 5000 series cover when filled with concrete weighs approx. 90kg/m². (18 1/2 lbs/ft²).

See installation guide on page 34.

Maximum / minimum sizes



Cross section showing concrete and timber sub-floors



Duct Cover

Typical floor finishes

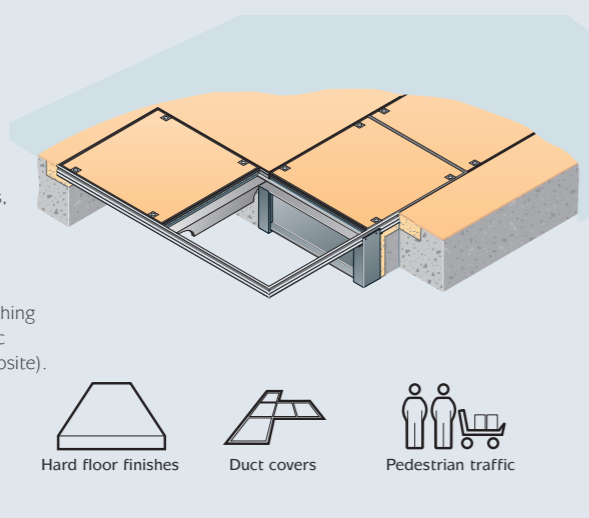
Ceramic tiles, marble, terrazzo, concrete, resin, wood and all hard floors.

Performance

Pedestrian traffic (including wheeled trolleys, sack trucks etc.) only.

Options

Every cover is available with a choice of aluminium or brass show edge, and matching lifting blocks, or Colouredge high impact pvc edges with aluminium lifting blocks (see website). Double seal.



Size

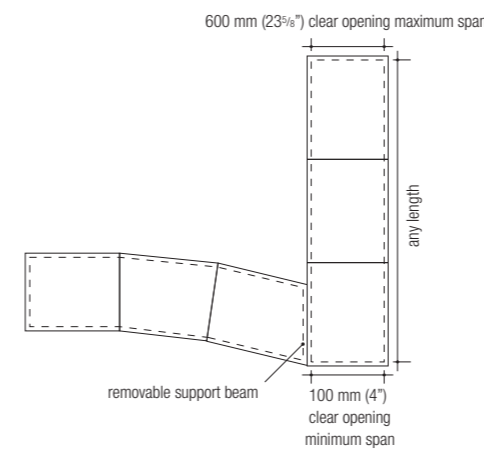
Overall frame size = clear opening + 120 mm (4 3/4").
e.g. 600 mm (23 3/8") clear opening = 720 mm (28 3/8") overall frame.
Subject to correct infill/installation.

Weight

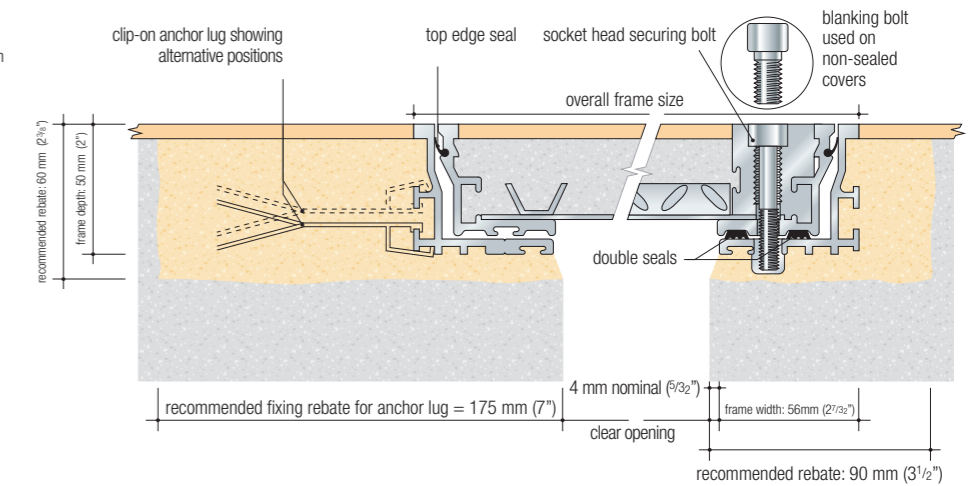
A 5000 series cover when filled with concrete weighs approx. 90 kg/m² (18 1/2 lbs/ft²).

See installation guide on page 34.

Typical layout



Cross section showing anchor lugs and locking / lifting detail



Multipart Cover

Typical floor finishes

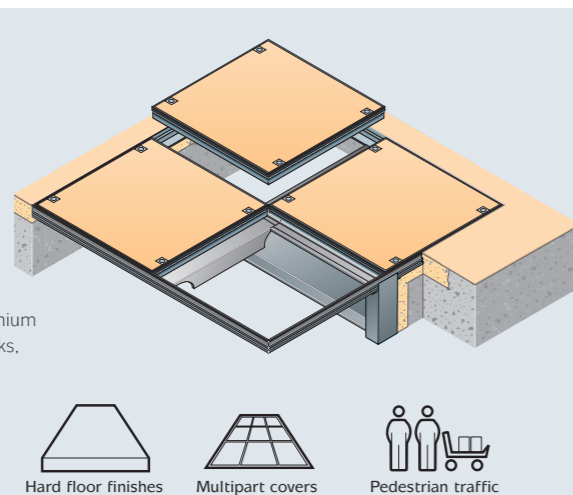
Ceramic tiles, marble, terrazzo, concrete, resin, wood and all hard floors.

Performance

Pedestrian traffic (including wheeled trolleys, sack trucks etc.) only.

Options

Every cover is available with a choice of aluminium or brass show edge, and matching lifting blocks, or Colouredge high impact pvc edges with aluminium lifting blocks (see website). Double seal.



Size

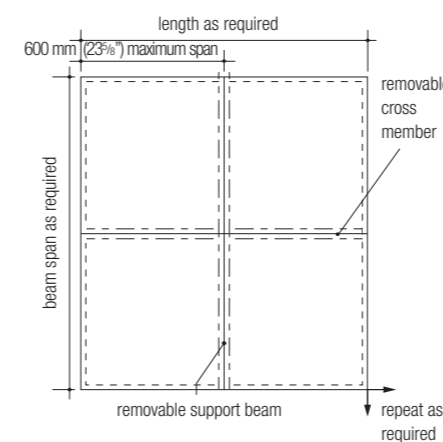
Because of the potentially complex design of multipart layouts, Howe Green recommend early consultation with their Technical Department to achieve the optimum and most economical layout for the given installation.

Weight

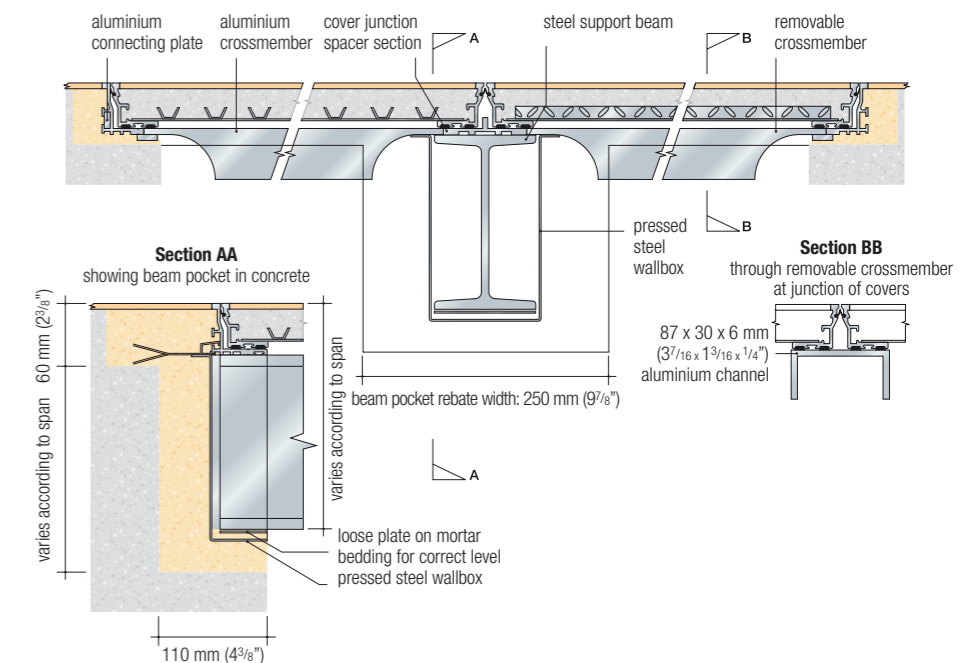
A 5000 series cover when filled with concrete weighs approx. 90 kg/m² (18 1/2 lbs/ft²).

See installation guide on page 34.

Typical layout



Cross section showing removable support beam and cross members



Typical specification clause for 5000 series

Recessed floor access / duct / multipart* covers and frames shall be Howe Green Ltd 5000 series with 1 hour fire rating to BS 476: Part 20: 1987*, stainless steel with galvanised baseplate and reinforcement, double sealed with socket head securing bolts / unsealed with blanking bolts*. Sizes shall be as shown on contract drawings nos† Covers are to be supplied complete with† sets of combined lifting/securing keys. All to be manufactured and supplied by Howe Green Ltd, Marsh Lane, Ware, Hertfordshire, SG12 9QQ, Great Britain, and installed in accordance with the manufacturer's installation details and sitework guide.

* Delete as appropriate. † Insert appropriate numbers & quantities

5000 Series

Stainless Steel Single Cover/Duct Cover/Multipart Cover

Floor access covers for pedestrian traffic



5000 Series

Single Cover

Typical floor finishes

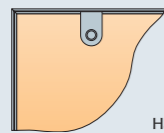
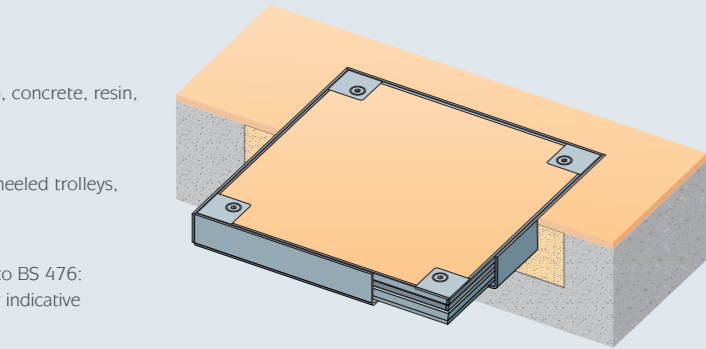
Ceramic tiles, marble, terrazzo, concrete, resin, wood and all hard floors.

Performance

Pedestrian traffic (including wheeled trolleys, sack trucks etc.) only.

Options

Double seal. 1 hour fire rating to BS 476: Part 20: 1987 available; ask for indicative test report. Inset lifting points.



Hard floor finishes

Single covers



Pedestrian traffic

Size

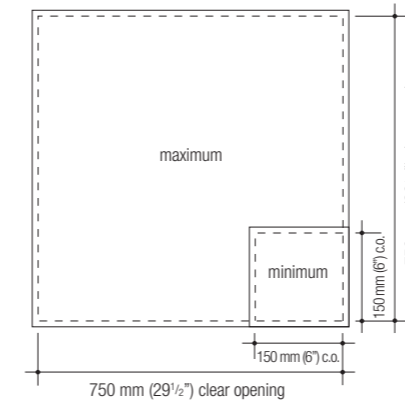
Overall frame size = clear opening + 130 mm (5 1/8").
e.g. 600 x 900 mm (23 3/8" x 35 3/8")
clear opening = 730 x 1030 mm (29 x 40 5/8")
overall frame.

Weight

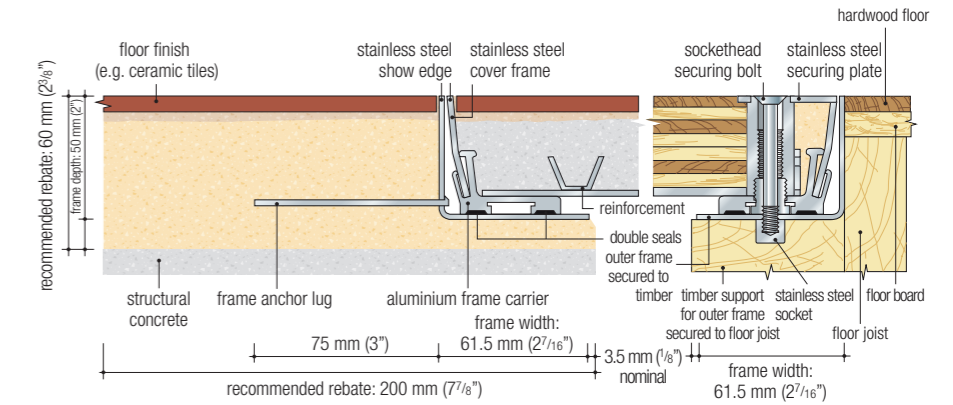
A 5000 series cover when filled with concrete weighs approx. 90 kg/m² (18 1/2 lbs/ft²).

See installation guide on page 34.

Maximum / minimum sizes



Cross section showing concrete and timber sub-floors



Duct Cover

Typical floor finishes

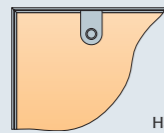
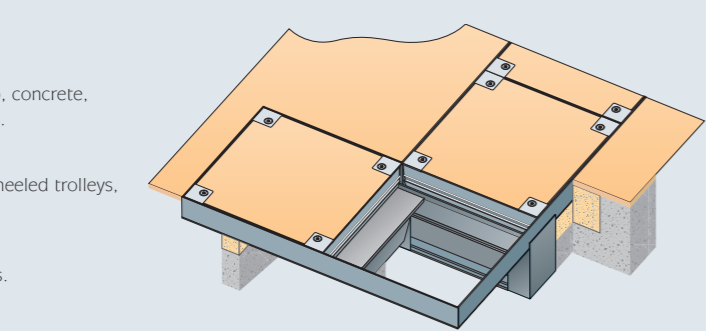
Ceramic tiles, marble, terrazzo, concrete, resin, wood and all hard floors.

Performance

Pedestrian traffic (including wheeled trolleys, sack trucks etc.) only.

Options

Double seal. Inset lifting points.



Hard floor finishes

Duct covers



Pedestrian traffic

Size

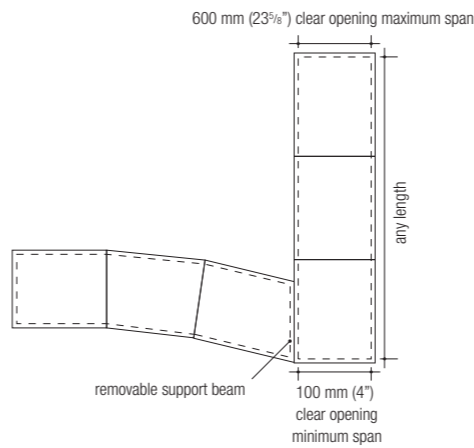
Overall frame size = clear opening + 130 mm (5 1/8").
e.g. 550 mm (21 5/8") clear opening = 680 mm (26 5/8") overall frame width.
Subject to correct infill/installation.

Weight

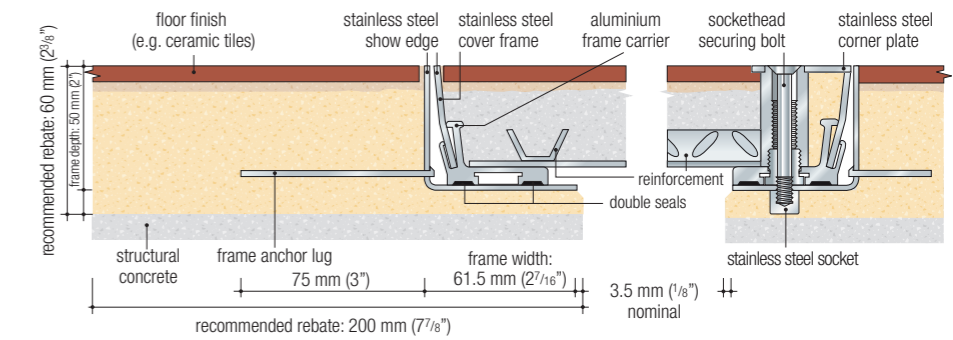
A 5000 series cover when filled with concrete weighs approx. 90 kg/m² (18 1/2 lbs/ft²).

See installation guide on page 34.

Typical layout



Cross section showing anchor lugs and locking / lifting detail



Multipart Cover

Typical floor finishes

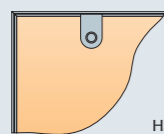
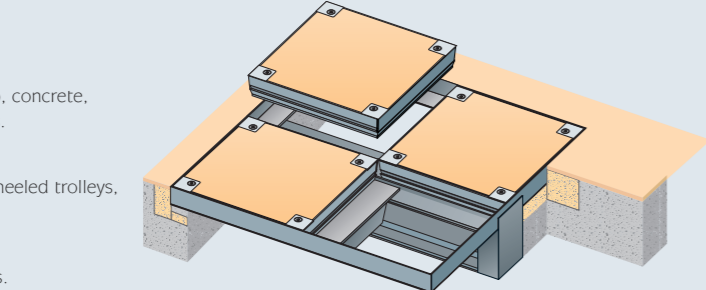
Ceramic tiles, marble, terrazzo, concrete, resin, wood and all hard floors.

Performance

Pedestrian traffic (including wheeled trolleys, sack trucks etc.) only.

Options

Double seal. Inset lifting points.



Hard floor finishes

Multipart covers



Pedestrian traffic

Size

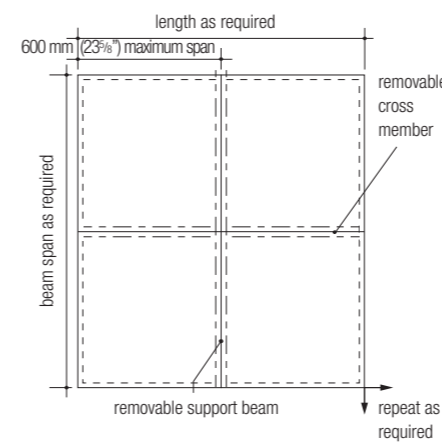
Because of the potentially complex design of multipart layouts, Howe Green recommend early consultation with their Technical Department to achieve the optimum and most economical layout for the given installation.

Weight

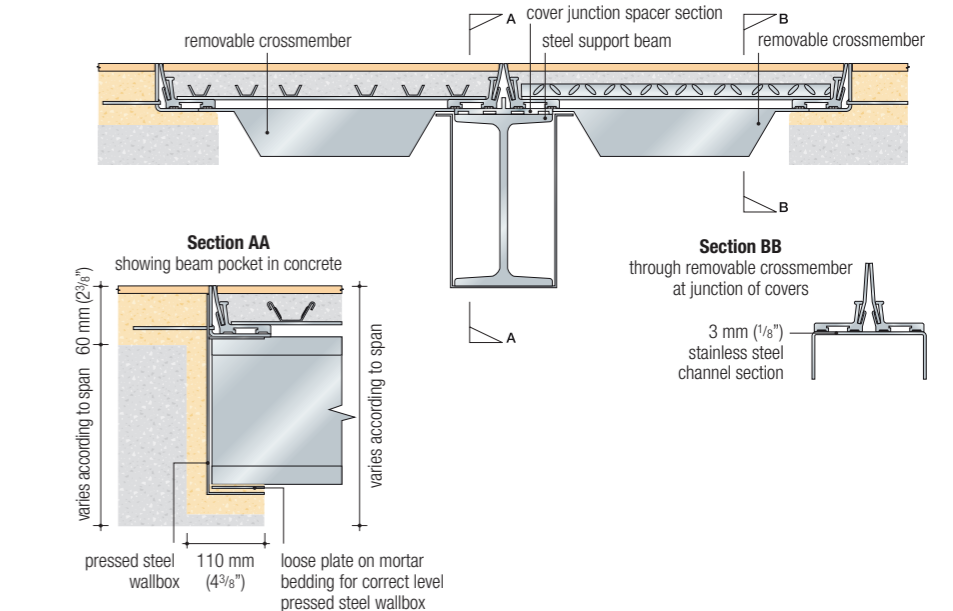
A 5000 series cover when filled with concrete weighs approx. 90 kg/m² (18 1/2 lbs/ft²).

See installation guide on page 34.

Typical layout



Cross section showing removable support beam and cross members



Typical specification clause for 7500 series

Recessed floor access / duct / multipart* covers and frames shall be Howe Green Ltd 7500 series, with 3 hour fire rating to BS 476: Part 20: 1987*, aluminium / brass / Colouredge* top edge dirt seal and mechanically jointed corners, stainless steel base plate and reinforcement, double sealed with socket head securing bolts / unsealed with blanking bolts*. Sizes shall be as shown on contract drawings nos† Covers to be supplied complete with† sets of combined lifting / securing keys. All to be manufactured and supplied by Howe Green Ltd, Marsh Lane, Ware, Hertfordshire, SG12 9QQ, Great Britain, and installed in accordance with the manufacturer's installation details and sitework guide.

* Delete as appropriate. † Insert appropriate numbers & quantities

7500 Series

Aluminium Single Cover/Duct Cover/Multipart Cover

Floor access covers for cars and light delivery vehicles



7500 Series

Single Cover

Typical floor finishes

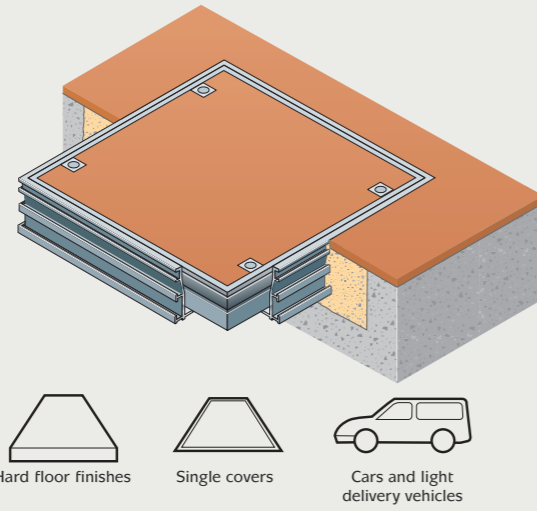
Ceramic tiles, marble, terrazzo, concrete, resin, wood and all hard floors.

Performance

Up to 5 tonne pneumatic tyre wheel load (cars and light delivery vehicles).

Options

Every cover is available with a choice of aluminium or brass show edge, and matching lifting blocks, or Colouredge high impact pvc edges with aluminium lifting blocks (see website). Double seal. 3 hour fire rating to BS 476: Part 20: 1987 available; ask for indicative test report.



Size

Overall frame size = clear opening + 120 mm (4 3/4") e.g. 600 x 900 mm (23 3/8 x 35 3/8") clear opening = 720 x 1020 mm (28 3/8 x 40 1/2") overall frame. Subject to correct infill/installation (see separate guide).

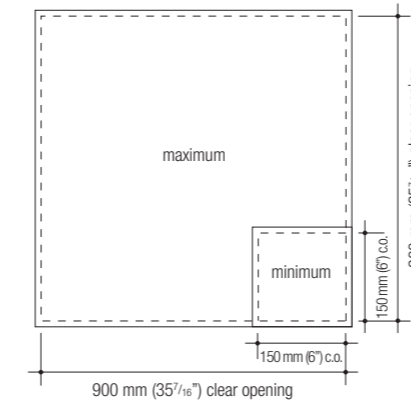
Performance Note: Trucks with small wheels and solid tyres, such as pallet rollers, may limit sizes to less than the stated maximum span. Alternatively, greater spans may be used, but at reduced loadings.

Weight

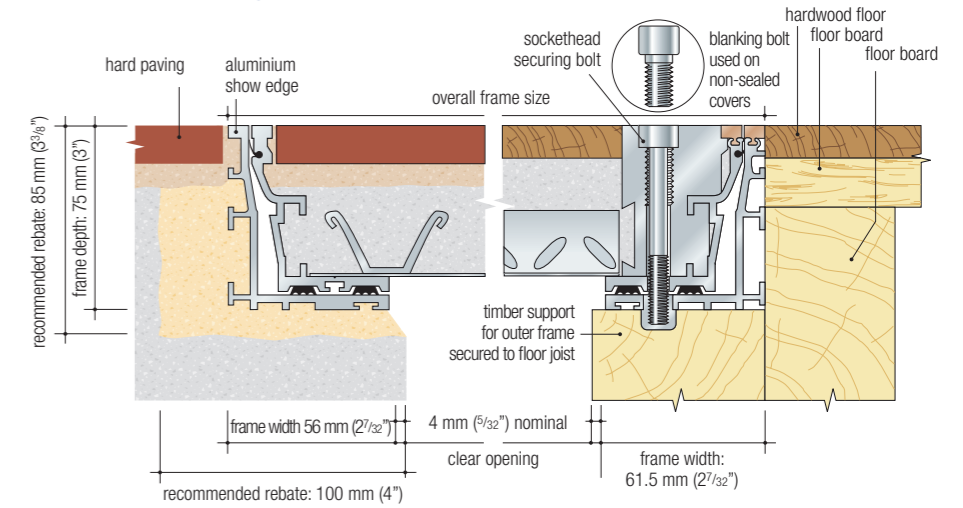
A 7500 series cover when filled with concrete weighs approx. 155 kg/m² (32 lbs/ft²).

See installation guide on page 34.

Maximum / minimum sizes



Cross section showing concrete and timber sub-floors



Duct Cover

Typical floor finishes

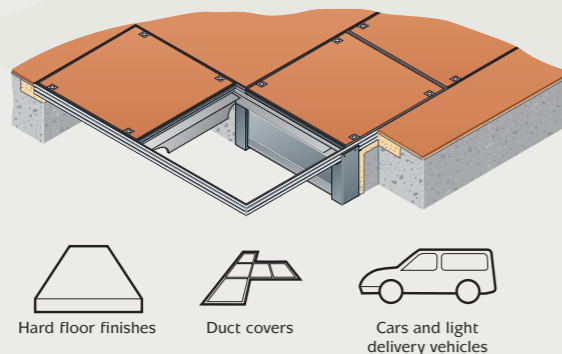
Ceramic tiles, marble, terrazzo, concrete, resin, wood and all hard floors.

Performance

Up to 3 tonne pneumatic tyre wheel load (cars and light delivery vehicles).

Options

Every cover is available with a choice of aluminium or brass show edge, and matching lifting blocks, or Colouredge high impact pvc edges with aluminium lifting blocks (see website). Double seal. 2 hour fire rating to BS 476: Part 20: 1987 available; ask for indicative test report.



Size

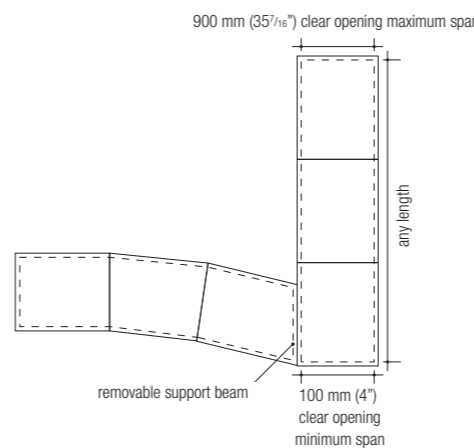
Overall frame size = clear opening + 120 mm (4 3/4") e.g. 550 mm (21 5/8") clear opening = 670 mm (26 3/8") overall frame width. Subject to correct infill/installation (see separate guide).

Weight

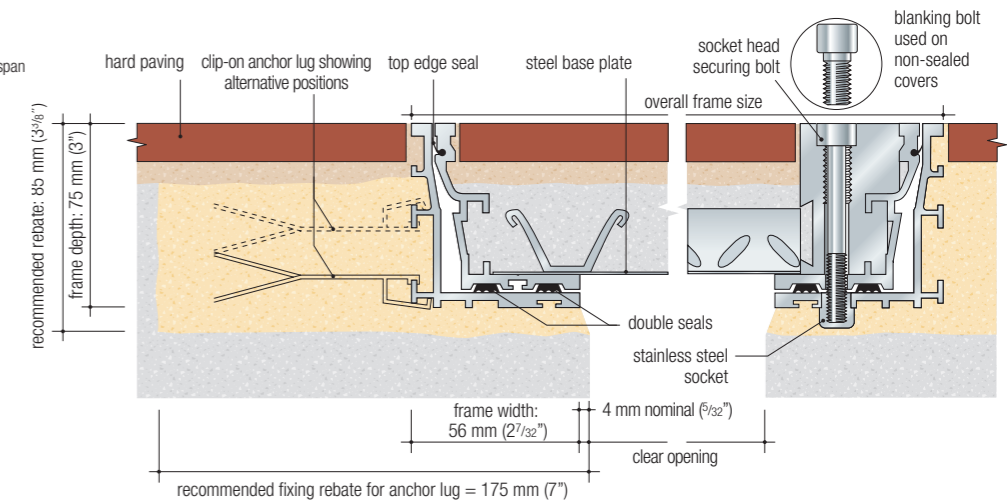
A 7500 series cover when filled with concrete weighs approx. 155 kg/m² (32 lbs/ft²).

See installation guide on page 34.

Typical layout



Cross section showing anchor lugs and locking / lifting detail



Multipart Cover

Typical floor finishes

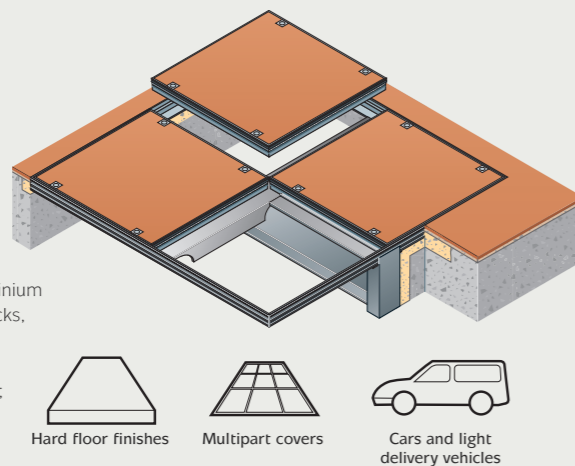
Ceramic tiles, marble, terrazzo, concrete, resin, wood and all hard floors.

Performance

Up to 3 tonne pneumatic tyre wheel load (cars and light delivery vehicles).

Options

Every cover is available with a choice of aluminium or brass show edge, and matching lifting blocks, or Colouredge high impact pvc edges with aluminium lifting blocks. Double seal. 2 hour fire rating to BS 476: Part 20: 1987 available; ask for indicative test report.



Size

Because of the potentially complex design of multipart layouts, Howe Green recommend early consultation with their Technical Department to achieve the optimum and most economical layout for the given installation.

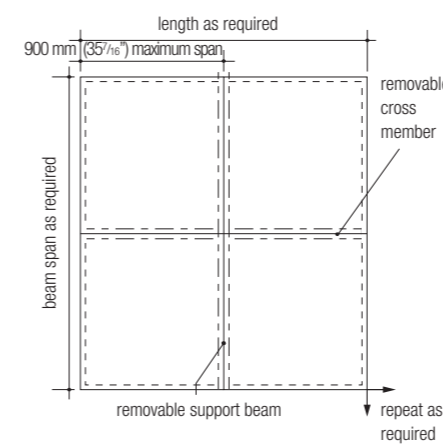
See also general notes on cover.

Weight

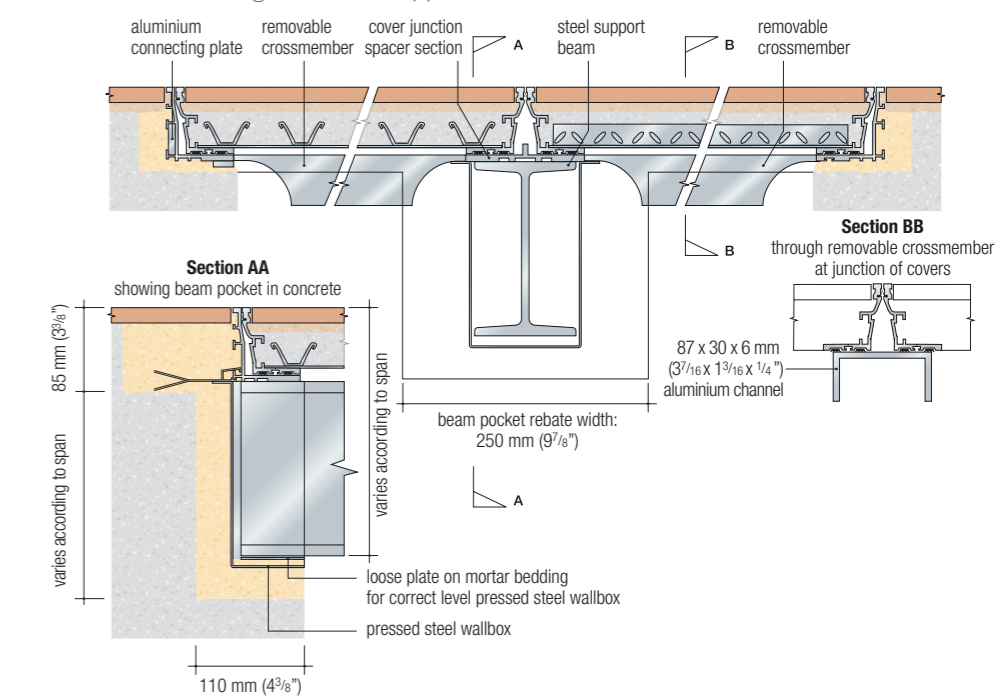
A 7500 series cover when filled with concrete weighs approx. 155 kg/m² (32 lbs/ft²).

See installation guide on page 34.

Typical layout



Cross section showing removable support beam and cross members



Typical specification clause for 7500 series

Recessed floor access / duct / multipart* covers and frames shall be Howe Green Ltd 7500 series, stainless steel, with 3 hour fire rating to BS 476: Part 20: 1987*, galvanised base plate and reinforcement, double sealed with socket head securing bolts / unsealed with blanking bolts*. Sizes shall be as shown on contract drawings nos† Covers to be supplied complete with† sets of combined lifting / securing keys. All to be manufactured and supplied by Howe Green Ltd, Marsh Lane, Ware, Hertfordshire, SG12 9QQ, Great Britain, and installed in accordance with the manufacturer's installation details and sitework guide.

* Delete as appropriate. † Insert appropriate numbers & quantities

7500 Series

Stainless Steel Single Cover/Duct Cover/Multipart Cover

Floor access covers for cars and light delivery vehicles



7500 Series

Single Cover

Typical floor finishes

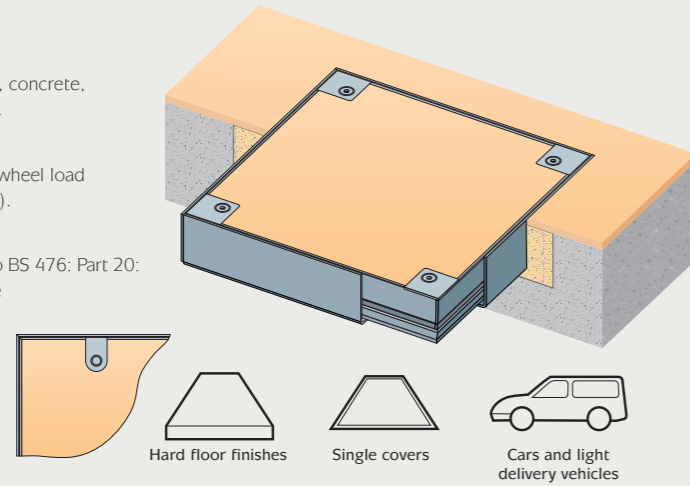
Ceramic tiles, marble, terrazzo, concrete, resin, wood and all hard floors.

Performance

Up to 5 tonne pneumatic tyre wheel load (cars and light delivery vehicles).

Options

Double seal. 3 hour fire rating to BS 476: Part 20: 1987 available; ask for indicative test report. Inset lifting points.



Size

Overall frame size = clear opening + 130mm (5 1/8")
e.g. 600 x 900 mm (23 3/8 x 35 3/8")
clear opening = 730 x 1030 mm (29 x 40 5/8")
overall frame.

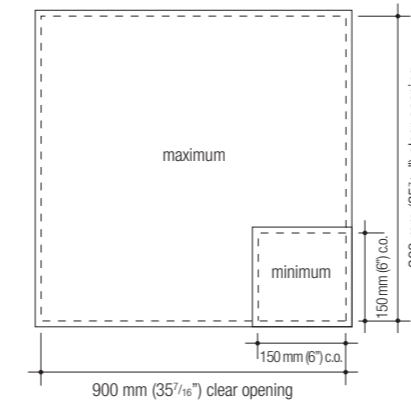
Performance Note: Trucks with small wheels and solid tyres, such as pallet rollers, may limit sizes to less than the stated maximum span. Alternatively, greater spans may be used, but at reduced loadings.

Weight

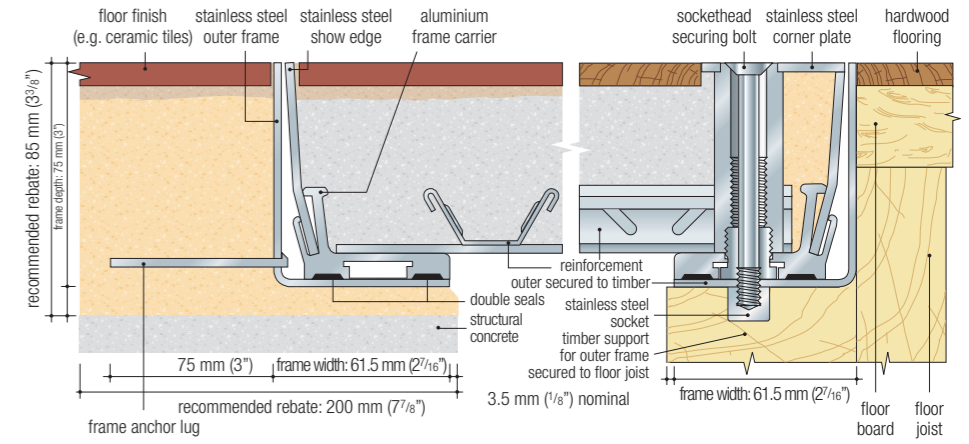
A 7500 series cover when filled with concrete weighs approx. 155 kg/m² (32 lbs/ft²).

See installation guide on page 34.

Maximum / minimum sizes



Cross section showing concrete and timber sub-floors



Duct Cover

Typical floor finishes

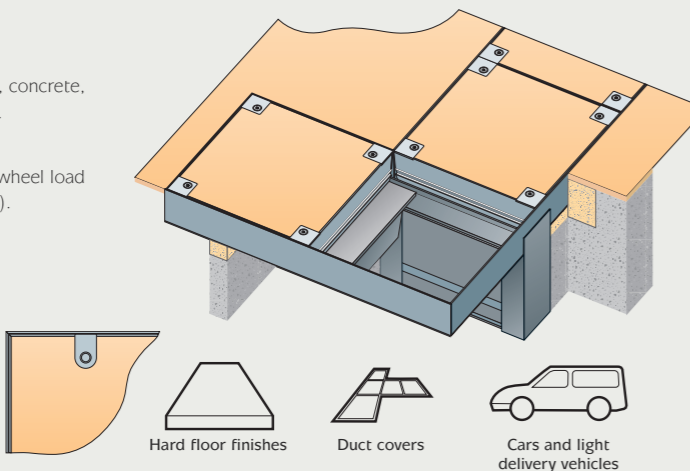
Ceramic tiles, marble, terrazzo, concrete, resin, wood and all hard floors.

Performance

Up to 3 tonne pneumatic tyre wheel load (cars and light delivery vehicles).

Options

Double seal. 2 hour fire rating to BS 476: Part 20: 1987 available; ask for indicative test report. Inset lifting points.



Size

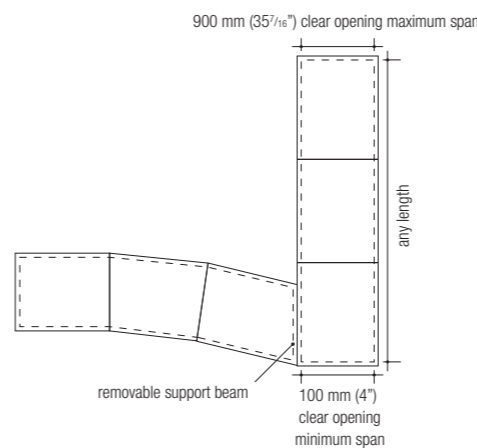
Overall frame size = clear opening + 130 mm (5 1/8")
e.g. 550 mm (21 3/2") clear opening = 680 mm (26 3/2") overall frame width.
Subject to correct infill/installation.

Weight

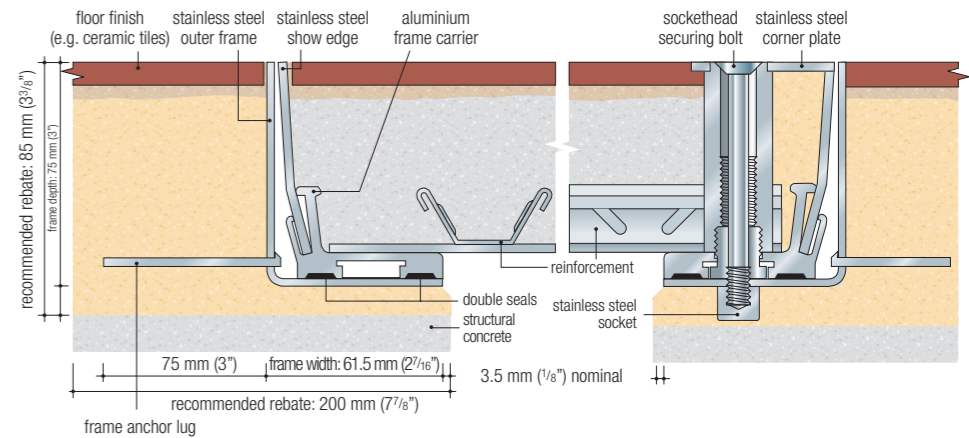
A 7500 series cover when filled with concrete weighs approx. 155 kg/m² (32 lbs/ft²).

See installation guide on page 34.

Typical layout



Cross section showing anchor lugs and locking / lifting detail



Multipart Cover

Typical floor finishes

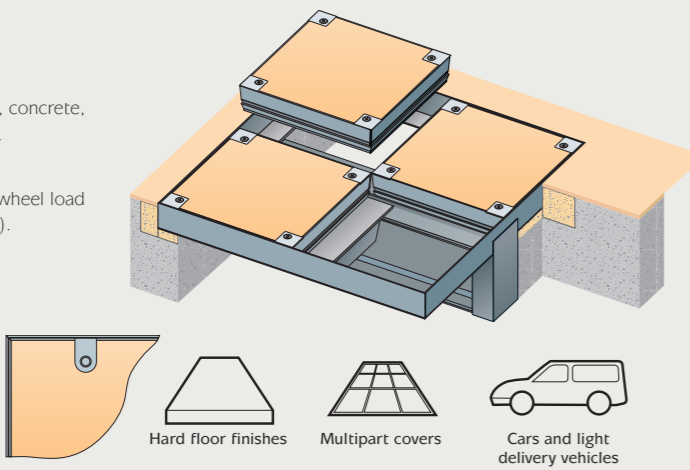
Ceramic tiles, marble, terrazzo, concrete, resin, wood and all hard floors.

Performance

Up to 3 tonne pneumatic tyre wheel load (cars and light delivery vehicles).

Options

Double seal. 2 hour fire rating to BS 476: Part 20: 1987 available; ask for indicative test report. Inset lifting points.



Size

Because of the potentially complex design of multipart layouts, Howe Green recommend early consultation with their Technical Department to achieve the optimum and most economical layout for the given installation.

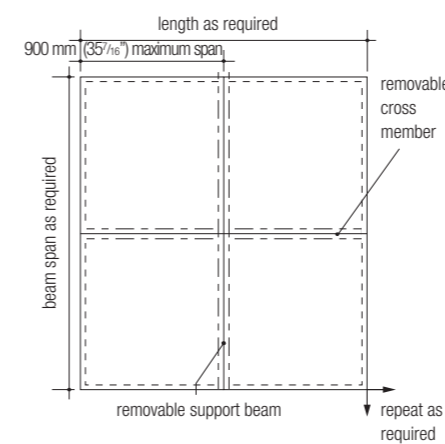
See also general notes on cover.

Weight

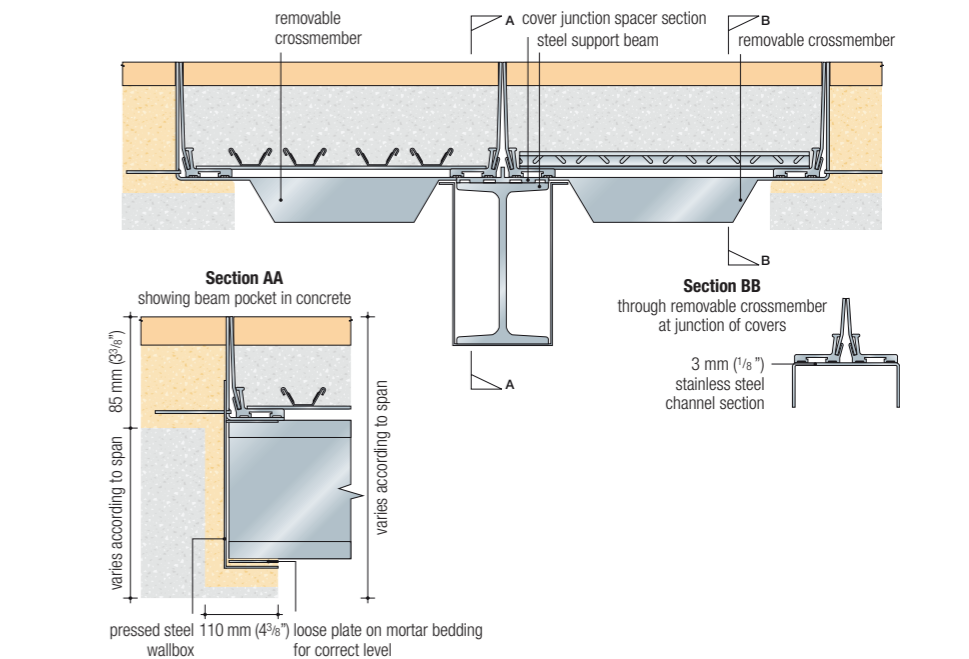
A 7500 series cover when filled with concrete weighs approx. 155 kg/m² (32 lbs/ft²).

See installation guide on page 34.

Typical layout



Cross section showing removable support beam and cross members



Typical specification clause for 1050 series

Recessed floor access / duct / multipart* covers and frames shall be Howe Green Ltd 1050 series, with 2 hour fire rating to BS 476: Part 20: 1987*, stainless steel with galvanised base plate and reinforcement, double sealed with socket head securing bolts/ unsealed with blanking bolts*. Sizes shall be as shown on contract drawings nos† Covers to be supplied complete with....† sets of combined lifting/ securing keys. All to be manufactured and supplied by Howe Green Ltd, Marsh Lane, Ware, Hertfordshire, SG12 9QQ, Great Britain, and installed in accordance with the manufacturer's installation details and sitework guide.

* Delete as appropriate. † Insert appropriate numbers & quantities

1050 Series

Stainless Steel Single Cover/Duct Cover/Multipart Cover



1050 Series

Single Cover

Typical floor finishes

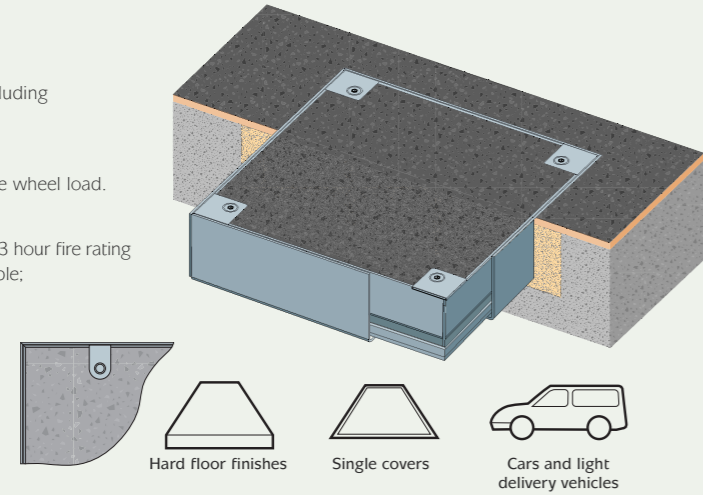
External grade paving slabs including granite and concrete.

Performance

Up to 6.5 tonne pneumatic tyre wheel load.

Options

Double seal. Inset lifting points. 3 hour fire rating to BS 476: Part 20: 1987 available; ask for indicative test report.



Hard floor finishes

Single covers



Cars and light delivery vehicles

Size

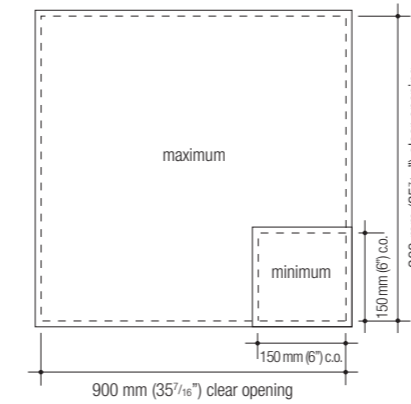
Overall frame size = clear opening + 130mm (5 1/8")
e.g. 600 x 900 mm (23 3/8 x 35 3/8")
clear opening = 730 x 1030 mm
(29 x 40 7/8") overall frame.

Weight

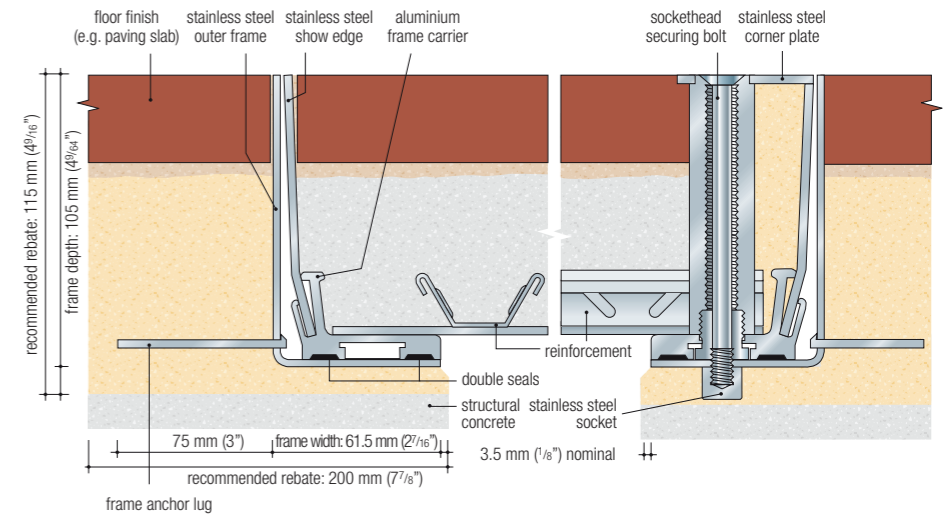
A 1050 series cover when filled with concrete weighs approx. 220 kg/m² (45 lbs/ft²).

See installation guide on page 34.

Maximum / minimum sizes



Cross section showing concrete and timber sub-floors



Duct Cover

Typical floor finishes

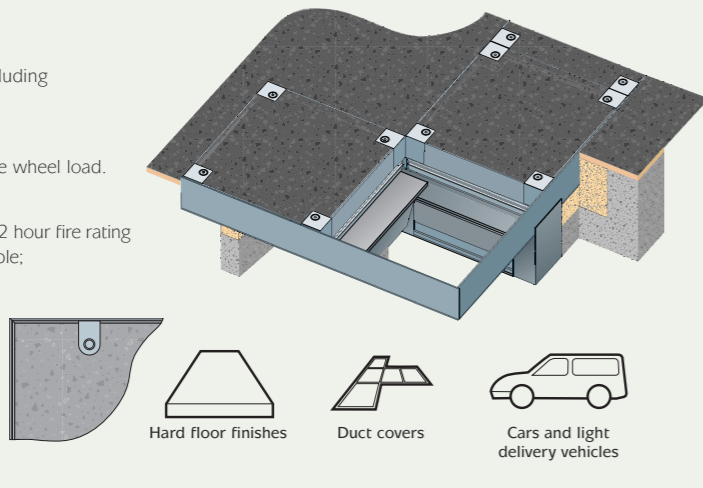
External grade paving slabs including granite and concrete.

Performance

Up to 6.5 tonne pneumatic tyre wheel load.

Options

Double seal. Inset lifting points. 2 hour fire rating to BS 476: Part 20: 1987 available; ask for indicative test report.



Hard floor finishes

Duct covers



Cars and light delivery vehicles

Size

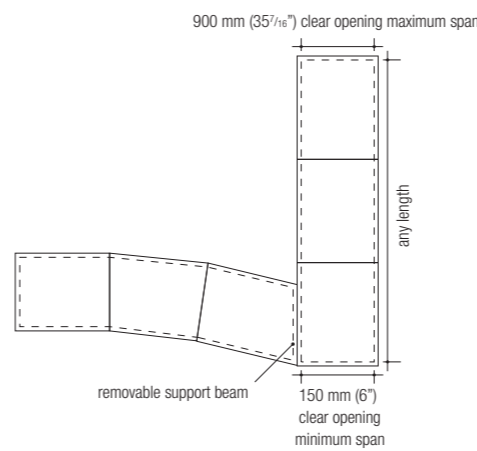
Overall frame size = clear opening + 130 mm (5 1/8")
e.g. 550 mm (21 5/8") clear opening = 680 mm (26 3/8") overall frame width.
Subject to correct infill/installation.

Weight

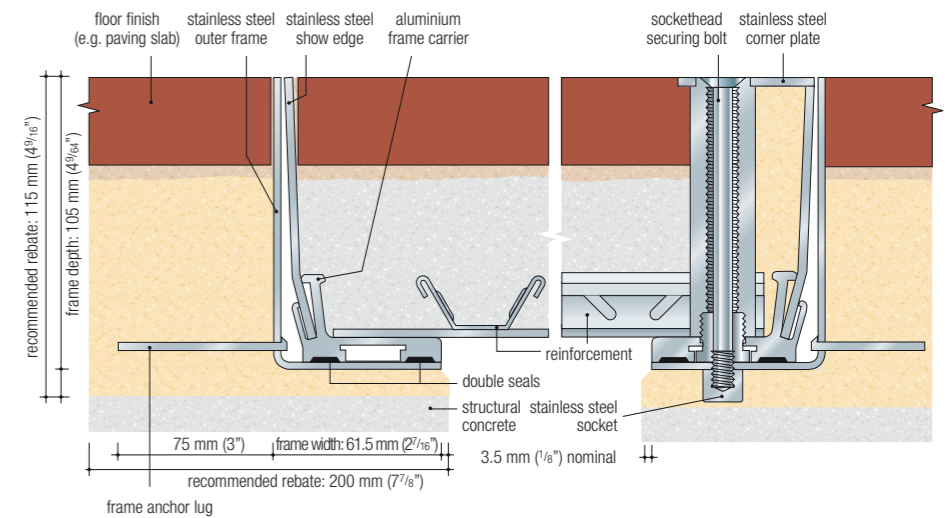
A 1050 series cover when filled with concrete weighs approx. 220 kg/m² (45 lbs/ft²).

See installation guide on page 34.

Typical layout



Cross section showing anchor lugs and locking / lifting detail



Multipart Cover

Typical floor finishes

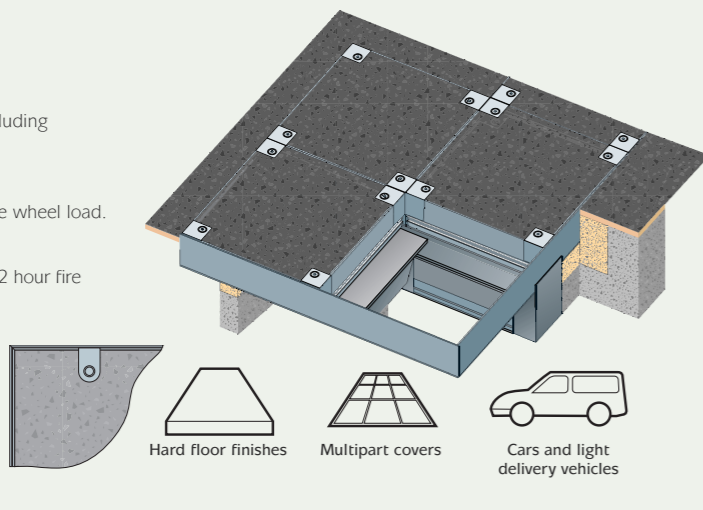
External grade paving slabs including granite and concrete.

Performance

Up to 6.5 tonne pneumatic tyre wheel load.

Options

Double seal. Inset lifting points. 2 hour fire rating to BS 476: Part 20: 1987 available; ask for indicative test report.



Hard floor finishes

Multipart covers



Cars and light delivery vehicles

Size

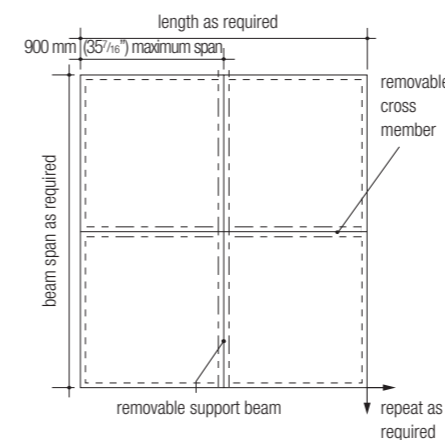
Because of the potentially complex design layout of multipart layouts, Howe Green recommends early consultation with their Technical Department to achieve the optimum and economical layout for the given installation.

Weight

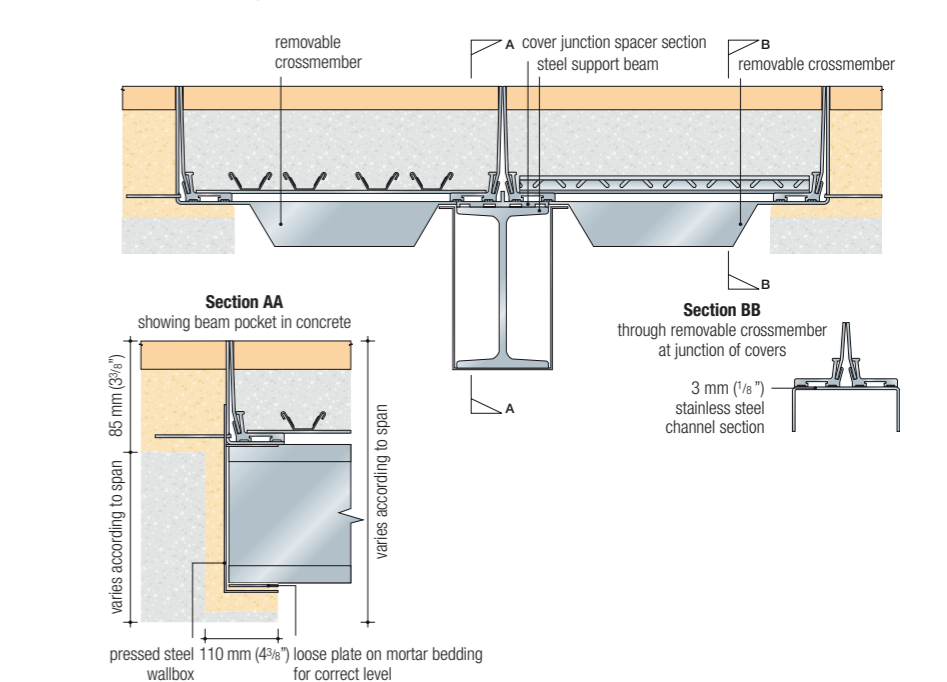
A 1050 series cover when filled with concrete weighs approx. 220 kg/m² (45 lbs/ft²).

See installation guide on page 34.

Typical layout



Cross section showing removable support beam and cross members



Typical specification clause for HSE 75 series

Recessed floor access hatch shall be Howe Green Ltd HSE 75 series, with fire rating to BS 476: Part 20: 1987*, aluminium / stainless steel show edge*, hatch to be fitted with concealed multi-link hinges, gas springs, galvanised base plate, reinforcement and double seal, top and underside release / top release only*.
 Sizes shall be as shown on contract drawings nos† Covers to be supplied complete with† sets of combined lifting/securing keys.
 All to be manufactured and supplied by Howe Green Ltd, Marsh Lane, Ware, Hertfordshire, SG12 9QQ, Great Britain, and installed in accordance with the manufacturer's installation details and sitework guide.

* Delete as appropriate. † Insert appropriate numbers & quantities

Single Cover / Duct Cover

Typical floor finishes

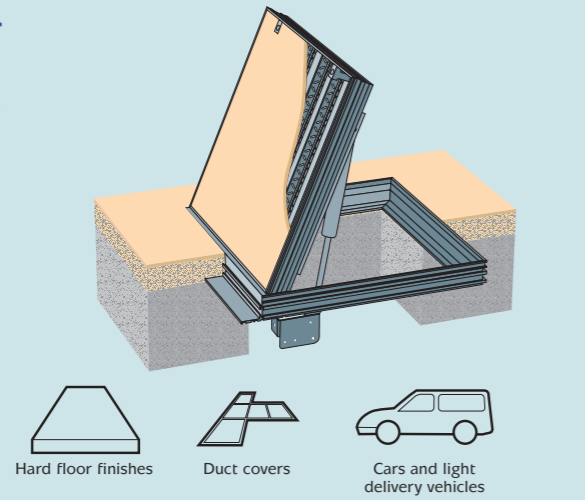
Ceramic tiles, marble, terrazzo, concrete, resin, wood and all hard floors.

Performance

Up to 5 tonne pneumatic tyre wheel load (cars and light delivery vehicles).

Options

Double Seal. 3 hour fire rating to BS 476: Part 20: 1987 available; ask for indicative test report. Under side release hatch.



Size

Overall top of frame size (when looking as drawing) = clear opening + 133 mm (5 1/4"). The 2 sides not shown above are 60mm (2 3/8"), so the clear opening to overall dimension in that plane is + 120mm (4 3/4") e.g. 600 x 600 mm (23 3/4" x 23 3/4") clear opening = 733 x 720 mm (28 7/8" x 28 3/8") overall top of frame.

Weight

A HSE 75 series access hatch when filled and installed correctly will require a maximum force of 20kg (45 lbs) to open.

Performance Note: Trucks with small wheels and solid tyres, may limit sizes to less than the stated maximum span. Alternatively, greater spans may be used, but at reduced loadings.

See installation guide on page 34.

Typical specification clause for HSE 75 series

Recessed floor access hatch shall be Howe Green Ltd HSE 75 series, with fire rating to BS 476: Part 20: 1987*, aluminium / stainless steel show edge*, hatch to be fitted with concealed multi-link hinges, gas springs, galvanised base plate, reinforcement and double seal, top and underside release / top release only*.
 Sizes shall be as shown on contract drawings nos† Covers to be supplied complete with† sets of combined lifting / securing keys.
 All to be manufactured and supplied by Howe Green Ltd, Marsh Lane, Ware, Hertfordshire, SG12 9QQ, Great Britain, and installed in accordance with the manufacturer's installation details and sitework guide.

* Delete as appropriate. † Insert appropriate numbers & quantities

Single Cover / Duct Cover

Typical floor finishes

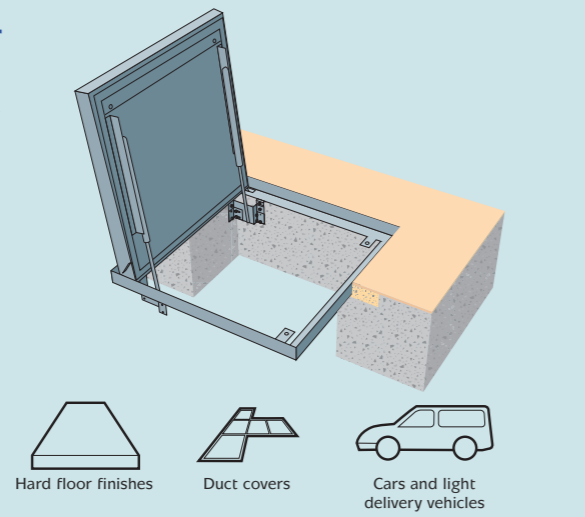
Ceramic tiles, marble, terrazzo, concrete, resin, wood and all hard floors.

Performance

Up to 5 tonne pneumatic tyre wheel load (cars and light delivery vehicles).

Options

Double Seal. 3 hour fire rating to BS 476: Part 20: 1987 available; ask for indicative test report. Under side release hatch.



Size

Overall frame size = clear opening + 147 mm (5 7/8") e.g. 600 mm (23 3/4") clear opening = 747 mm (29 1/2") overall frame width.

Weight

A HSE 75 series access hatch when filled and installed correctly will require a maximum force of 20 kg (45 lbs) to open.

See installation guide on page 34.

HSE 75 Series

Aluminium Single Cover/Duct Cover

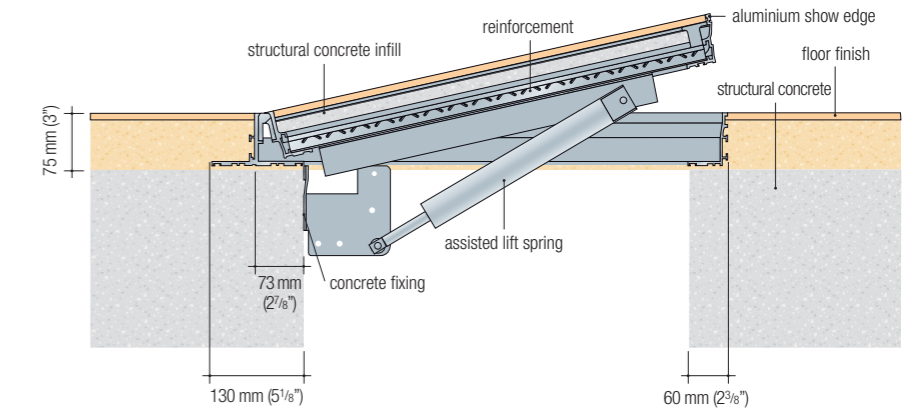
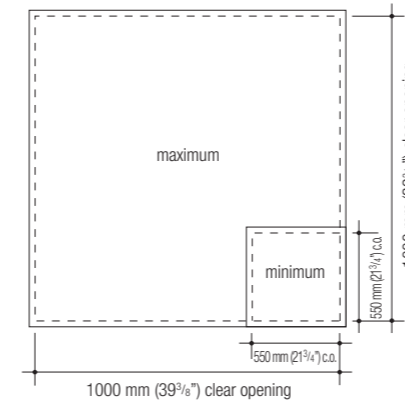
Hinged floor access covers for cars and light delivery vehicles



HSE 75 Series

Cross section showing timber sub-floors

Maximum / minimum sizes



HSE 75 Series

Stainless Steel Single Cover/Duct Cover

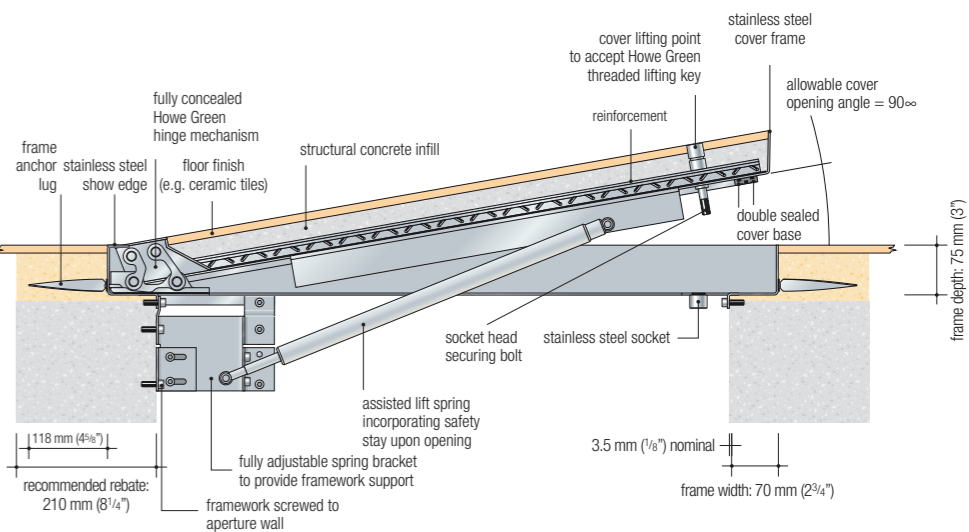
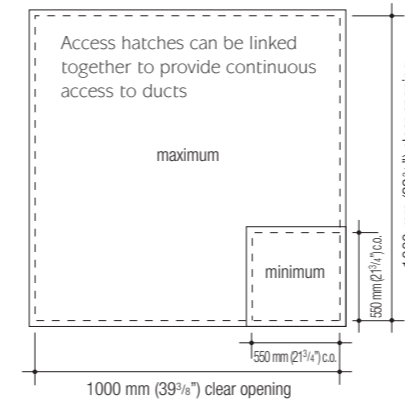
Hinged floor access covers for cars and light delivery vehicles



HSE 75 Series

Cross section showing concrete sub-floor

Maximum / minimum sizes



Typical specification clause for 5 BAR series

Aluminium access covers shall be Howe Green Ltd 5 Bar series, with aluminium tread plate lid, reinforced as required, single seal*, quick release stainless steel fasteners. Sizes shall be as shown on contract drawings nos† Covers to be supplied complete with† sets of combined lifting / securing keys. All to be manufactured and supplied by Howe Green Ltd, Marsh Lane, Ware, Hertfordshire, SG12 9QQ, Great Britain, and installed in accordance with the manufacturer's installation details and sitework guide.

* Delete as appropriate. † Insert appropriate numbers & quantities

5 BAR Series
Aluminium Tread Plate Covers
 Tread plate covers for pedestrian traffic



5 BAR Series

Tread Plate Cover

Typical floor finishes

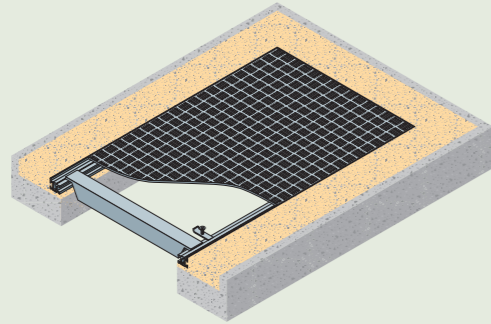
Ceramic tiles, terrazzo, concrete, resin and all hard floors.

Performance

Pedestrian traffic (including wheeled trolleys, sack trucks etc.) only. Consult the Howe Green Technical Department for heavier loadings.

Options

Single Seal.



Size

Overall frame size = clear opening + 82 mm (3 1/4").
 e.g. 600 mm (23 5/8") clear opening = 682 mm (26 7/8") overall frame.

Performance Note: Trucks with small wheels and solid tyres, such as pallet rollers, may limit sizes to less than the stated maximum span. Alternatively, greater spans may be used, but at reduced loadings.

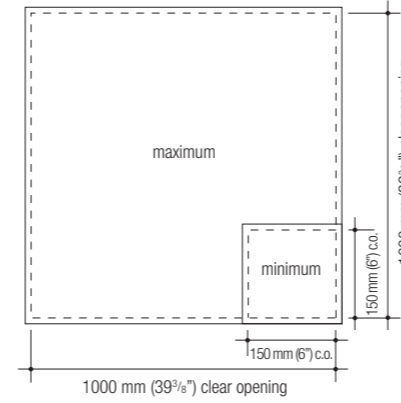
Weight

A 5 Bar series access cover weighs 18 kg/m² (3 3/4 lbs/ft²).

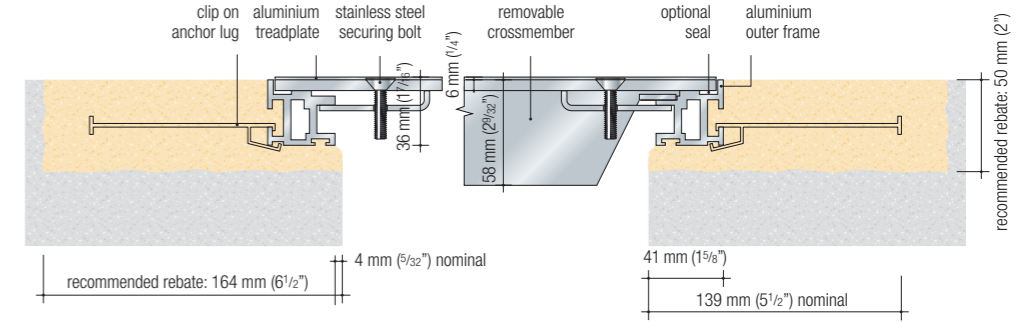
See installation guide on page 34.



Maximum / minimum sizes



Cross section showing concrete sub-floor



Colouredge
 High impact pvc show edge to blend with the flooring

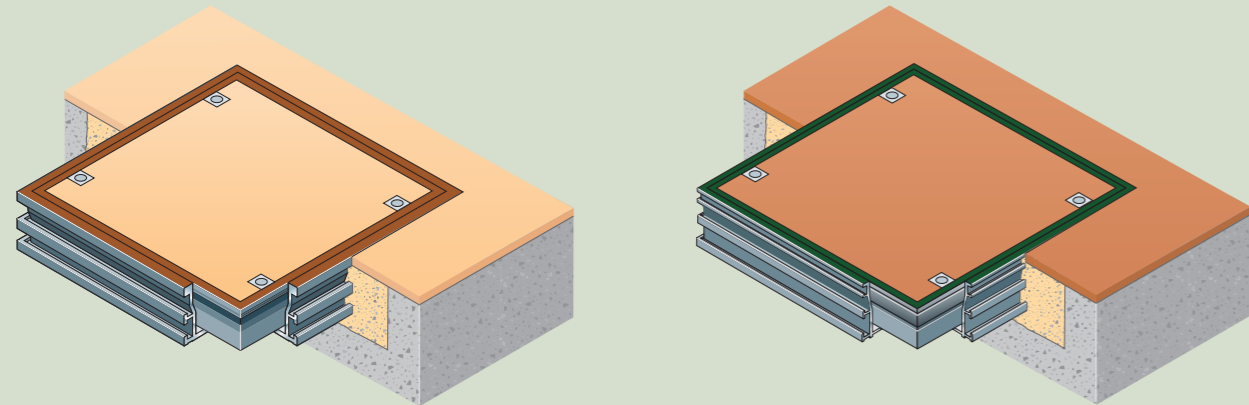


Colouredge

High impact pvc show edge to blend with the flooring and ensure an even greater level of aesthetic appeal.

Colouredge is available in the following colour options:

- Black
- Forest Green
- White
- Slate Grey
- Terracotta
- Sandstone
- Solid Brass



Floor access covers for flexible floor finish

Howe Green offers the Visedge series of floor access covers that have been specially designed for sheet flooring such as PVC, linoleum and rubber and some carpets.

Features and benefits

Materials

The Visedge series of floor access covers for flexible floor finishes is manufactured from aluminium with a galvanised steel deck.

Configuration

To ensure total versatility the Visedge series of floor access covers can be used singly, in continuous runs as duct covers or over large areas as a multipart cover.

Sizes

Howe Green Visedge floor access covers are custom made to your exact specification, between stated maximum and minimum sizes. Our investment in plant and equipment ensures custom made products can be manufactured without incurring a time or cost surcharge – to save you time and money.

Quality

Every aspect of our Visedge series of floor access covers has been designed and manufactured with quality in mind:

Covers are precision made to avoid distortion

A tough, lightweight, corrosion resistant access cover solution.

Crimped corners allow the access cover and frame to lie flush with the flooring.

Available with a top edge seal to help prevent dirt and water ingress.

Galvanised steel base plates and reinforcement to resist corrosion. Contact our Technical Department if products are to be used in a corrosive environment such as swimming pools.

Fitting

Quick and easy to install ensuring minimum disruption, full installation instructions provided. Access to network of skilled installation experts is available if required.

Easy access

Howe Green floor access covers provide easy access to under floor services using lifting keys to remove the access cover.

Load bearing capacities

A light duty access cover with a load bearing capacity suitable for pedestrian traffic, including wheeled trolleys and sack trucks.

Fire ratings

Fire ratings up to three hours are available on most floor access covers.

Aluminium securing edge trims to seal and protect junctions between flexible flooring and hard flooring.

Visedge DS

The Visedge DS secures and protects the edge of the flexible flooring when it has been laid on top of another surface. The Visedge DS is designed for limited depth application and pedestrian traffic.

Visedge VR

The Visedge VR is a vinyl edge securing trim with weldable pvc edge designed to enable two differing floor finishes, such as vinyl and terrazzo to be finished flush. The Visedge VR anchors the perimeter of the flexible flooring to prevent the ingress of water and to protect the edge profile of the adjoining hard floor finish. It forms an impermeable, flat, hygienic and permanent joint. The Visedge VR is designed for limited depth application and pedestrian traffic.

Visedge Series

Aluminium Single Cover/Duct Cover/Multipart Cover - Pages 24-25

Floor access covers trims for pedestrian traffic



Visedge Series

Visedge DS Series

Aluminium Securing edge trim for limited depth application - Pages 26-27

Securing edge trim for pedestrian traffic

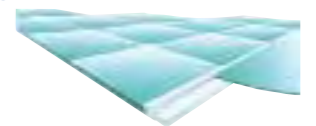


Visedge DS Series

Visedge VR Series

Aluminium Securing edge trim for limited depth application - Pages 26-27

Securing edge trim for pedestrian traffic



Visedge VR Series

Typical specification clause for Visedge series

Aluminium access covers and duct/multipart covers* and frames shall be Howe Green Ltd Visedge series with top edge dirt seal, weldable pvc securing edge, mechanically jointed corners, double sealed on seating and fitted with securing bolts. Sizes shall be as shown on contract drawings nos† Covers are to be supplied complete with† sets of combined lifting/securing keys. All to be manufactured and supplied by Howe Green Ltd, Marsh Lane, Ware, Hertfordshire, SG12 9QQ, Great Britain, and installed in accordance with the manufacturer's installation details and sitework guide.

* Delete as appropriate. † Insert appropriate numbers & quantities

Visedge Series Aluminium Single Cover/Duct Cover/Multipart Cover



Visedge Series

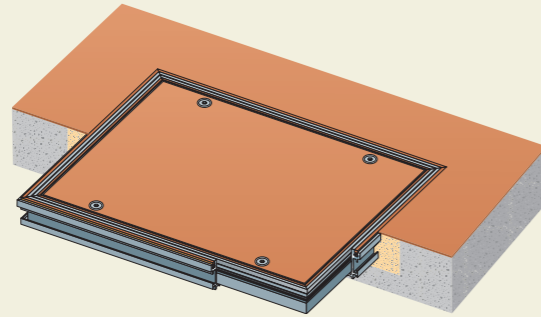
Single Cover

Typical floor finishes

Vinyl, linoleum, rubber, all flexible floor coverings and some carpets.

Performance

Pedestrian traffic (including wheeled trolleys, sack trucks etc.) only. Consult the Howe Green Technical Department for heavier loadings.



Size

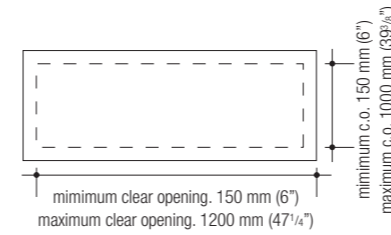
Overall frame size = clear opening + 137 mm (5 1/2").
e.g. 600 x 600 mm (23 3/8" x 23 3/8")
clear opening = 737 x 737 mm (29 1/2" x 29 1/2")
overall frame width.

Weight

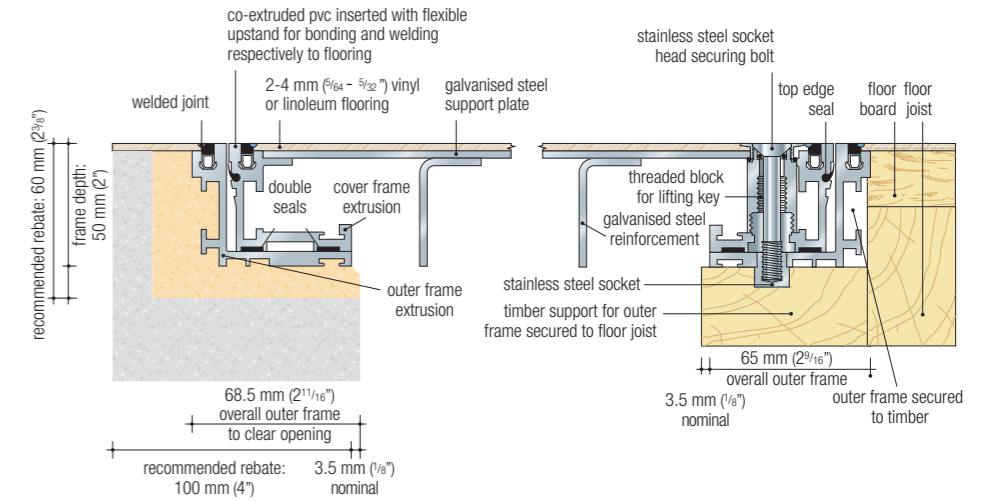
A Visedge series cover weighs approx. 55 kg/m² 11 1/4 lbs/ft².

See installation guide on page 35.

Maximum / minimum sizes



Cross section showing concrete and timber sub-floors



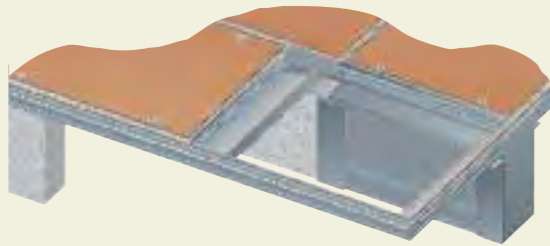
Duct Cover

Typical floor finishes

Vinyl, linoleum, rubber, all flexible floor coverings and some carpets.

Performance

Pedestrian traffic (including wheeled trolleys, sack trucks etc.) only. Consult the Howe Green Technical Department for heavier loadings.



Size

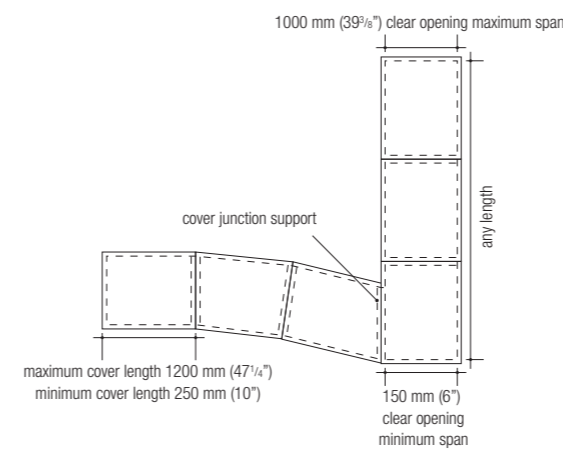
Overall frame size = clear opening + 137 mm (5 1/2").
e.g. 600 mm (23 3/8") clear opening = 737 mm (29 1/2") overall frame.
Subject to correct installation.

Weight

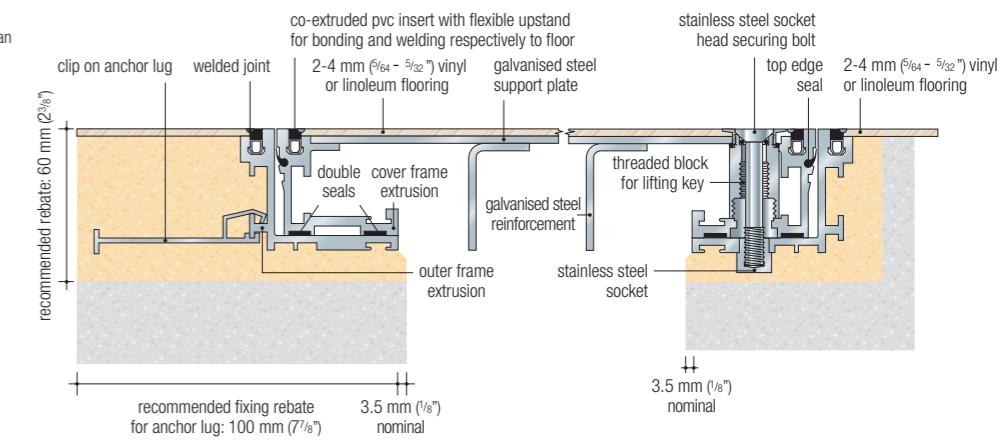
A Visedge series cover weighs approx. 55 kg/m² 11 1/4 lbs/ft².

See installation guide on page 35.

Typical layout



Cross section showing anchor lugs and locking / lifting detail



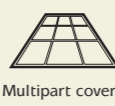
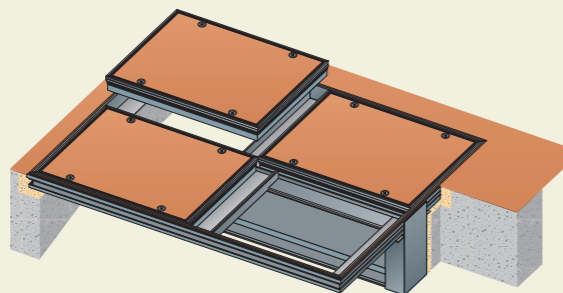
Multipart Cover

Typical floor finishes

Vinyl, linoleum, rubber, all flexible floor coverings and some carpets.

Performance

Pedestrian traffic (including wheeled trolleys, sack trucks etc.) only. Consult the Howe Green Technical Department for heavier loadings.



Size

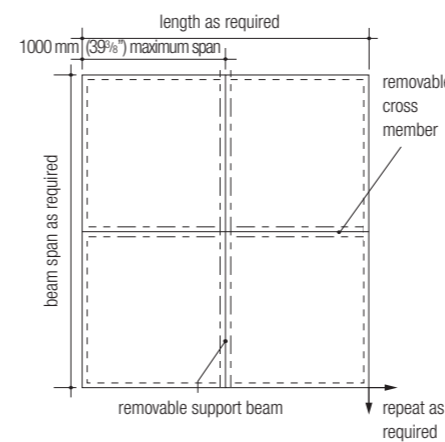
Because of the potentially complex design of multipart layouts, Howe Green recommend early consultation with their Technical Department to achieve the optimum and most economical layout for the given installation. Subject to correct installation. Removable support beams are finished with red primer.

Weight

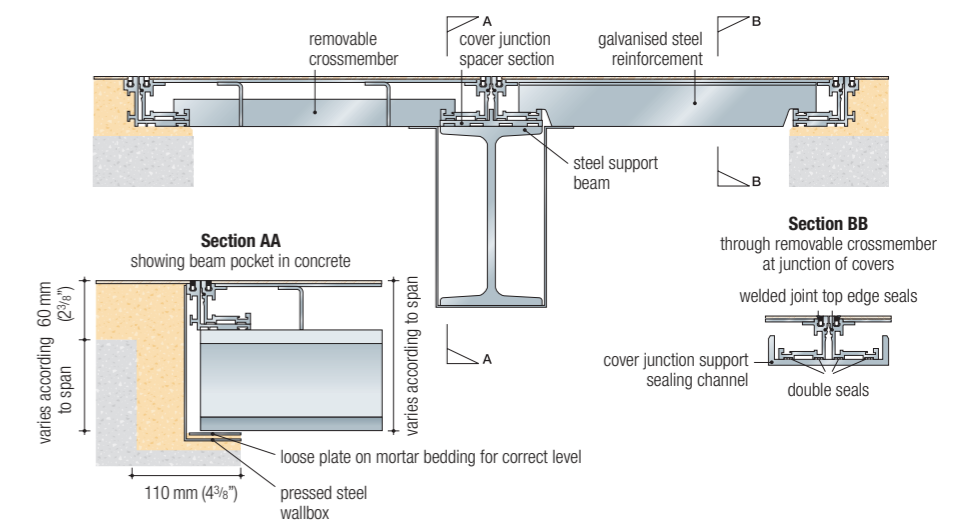
A Visedge series cover weighs approx. 55 kg/m² 11 1/4 lbs/ft².

See installation guide on page 35.

Typical layout



Cross section showing removable support beam and cross members



Typical specification clause for Visedge DS series

Vinyl edge securing trim shall be Howe Green Ltd Visedge DS. Total quantity =† No. 2.0 metre lengths. All to be manufactured and supplied by Howe Green Ltd, Marsh Lane, Ware, Hertfordshire, SG12 9QQ, Great Britain, and installed in accordance with the manufacturer's installation details and sitework guide.

* Delete as appropriate. † Insert appropriate numbers & quantities

Visedge DS Series

Aluminium Securing edge trim for limited depth application

Securing edge trim for pedestrian traffic

Visedge DS Series

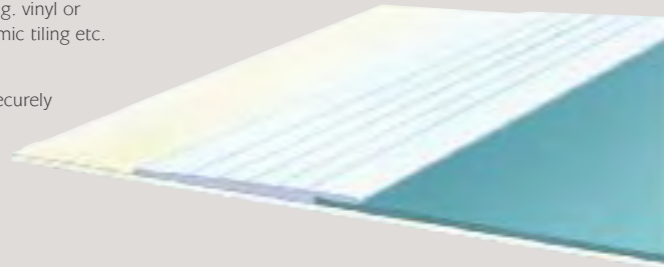
Securing Edge Trim

Typical floor finishes

For junctions of flexible sheeting, e.g. vinyl or linoleum and hard paving, e.g. ceramic tiling etc.

Performance

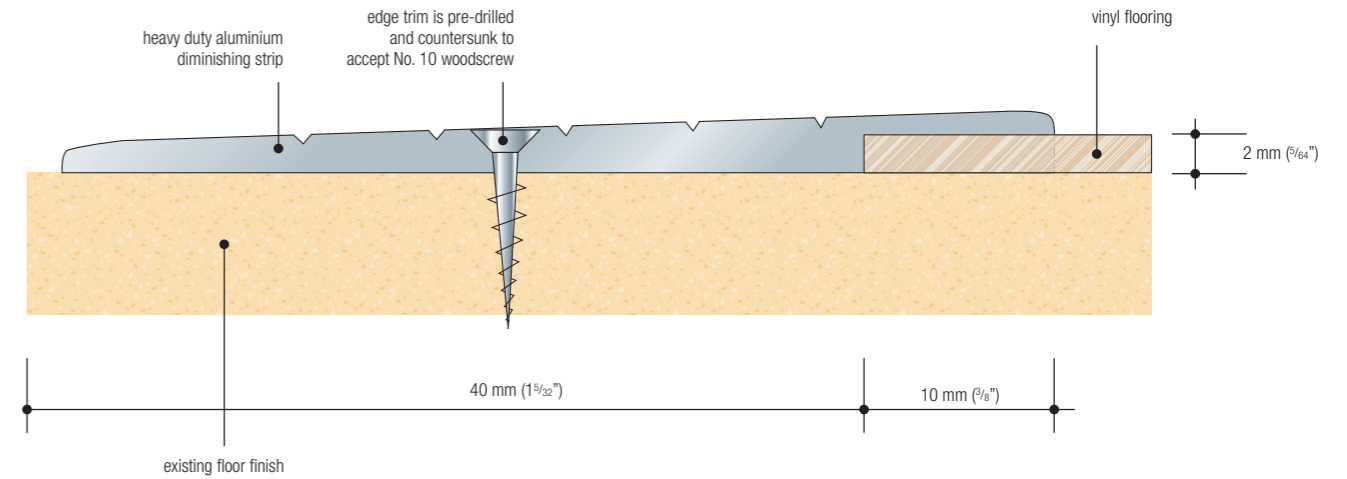
Visedge DS is designed to anchor securely the perimeter of the vinyl flooring.



Size

Visedge DS is stocked in packs of 5 No. 2.0 metre (78½") lengths. Any quantity of 2.0 metre (78½") lengths can be supplied. Subject to correct infill/installation. See installation guide on page 35.

Section at paving junction



Typical specification clause for Visedge VR series

Vinyl edge securing trim shall be Howe Green Ltd Visedge VR with weldable pvc securing edge. Total quantity =† No. 2.0 metre lengths. All to be manufactured and supplied by Howe Green Ltd, Marsh Lane, Ware, Hertfordshire, SG12 9QQ, Great Britain, and installed in accordance with the manufacturer's installation details and sitework guide.

* Delete as appropriate. † Insert appropriate numbers & quantities

Visedge VR Series

Aluminium Securing edge trim for limited depth application

Securing edge trim for pedestrian traffic

Visedge VR Series

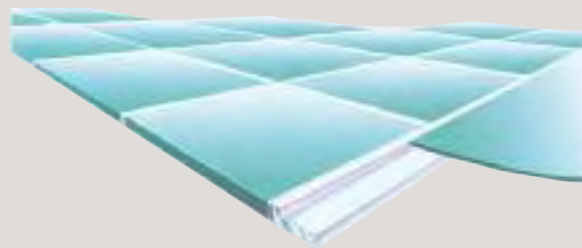
Securing Edge Trim

Typical floor finishes

For junctions of flexible sheeting, e.g. vinyl or linoleum and hard paving, e.g. ceramic tiling etc.

Performance

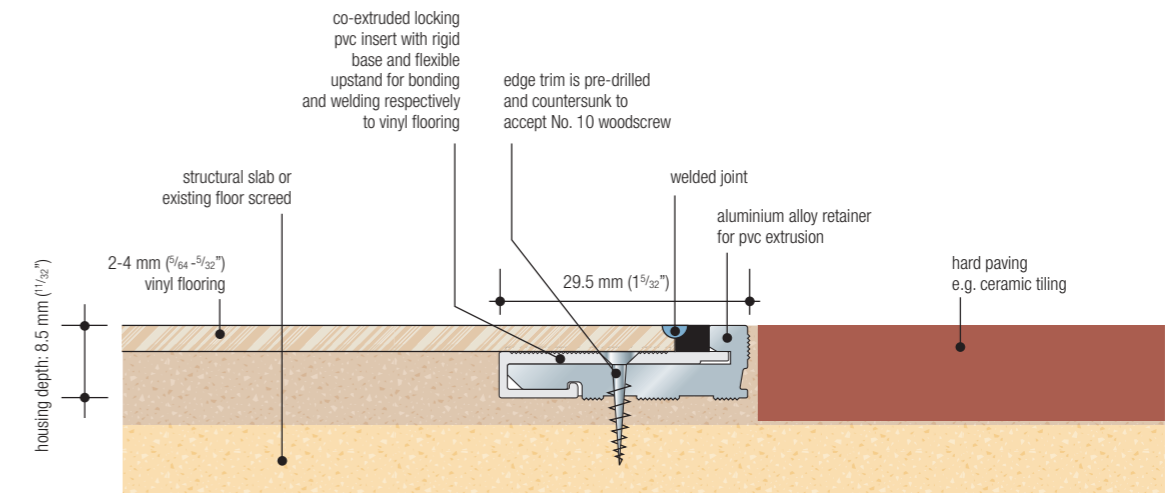
Visedge VR is designed to anchor securely the perimeter of the vinyl sheeting to prevent the ingress of water and to protect the edge profile of the adjoining ceramic tile paving.



Size

Visedge VR is stocked in packs of 5 No. 2.0 metre (78½") lengths. Any quantity of 2.0 metre (78½") lengths can be supplied. See installation guide on page 35.

Section at paving junction



Access covers for walls and ceilings

Howe Green offers a range of steel access panels designed to access concealed services located in walls and ceilings.

The Waldor 50 is suitable for walls with tiled finishes up to 12 mm ($\frac{15}{32}$ ") thick where regular access is required. The Tile-A-Door+ is designed for areas where occasional access is required and can accept a tiled finish up to 12 mm ($\frac{25}{64}$ ").

The Maghatch is suitable for plaster walls and the Combihatch for plaster walls and ceilings, both are supplied ready primed to accept a paint finish. The Maghatch offers an economical solution for areas where infrequent access is required and the Combihatch is recommended for regular access.

Features and benefits

Materials

The range of Howe Green wall and ceiling access covers are manufactured from corrosion resistant steel.

Configuration

The Combihatch access cover is available as a single or double leaf for both walls and ceilings.

Sizes

Howe Green wall and ceiling access covers are manufactured to order in 1 mm increments, to your exact specification, between the stated maximum and minimum sizes. Our investment in plant and equipment ensures custom made products can be manufactured without incurring a time or cost surcharge – to save you time and money.

Quality

Every aspect of our wall and ceiling access covers has been designed and manufactured with quality in mind:

Covers are precision made to ensure accurate and unobtrusive installation.

Maintenance free.

Fitting

Quick and easy to install ensuring minimum disruption, full installation instructions provided. Access to our network of skilled installation experts is available if required.

Easy access

Howe Green wall and ceiling access covers provide easy access to concealed services.

Fire ratings

A fire rating of up to one hour is available on Combihatch access covers for walls and ceilings.

Optional extras

In order to give you exactly the wall or ceiling access cover you require a number of optional extras are available:

Waldor 50

Doors can be fitted with either "push pull" concealed or security locks.

Stainless steel show edge is available for both the door and frame.

Tile-A-Door+

Special finishes – for example brushed stainless steel.

Maghatch

Special finishes – for example brushed stainless steel.

Combihatch

Covers can be fitted with either budget or security locks.

Outer frames can incorporate a plaster bead or picture frame surround.

Special finishes – for example brushed stainless steel.

Waldor 50

Stainless Steel - Pages 30-31

For access through tiled wall surfaces



Waldor 50

Tile-a-Door+

Pages 30-31

For access through wall surfaces



Tile-a-Door+

Maghatch

Pages 32-33

For access through wall surfaces

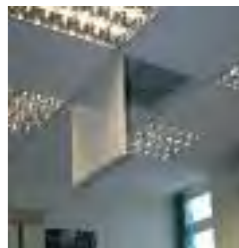


Maghatch

Combihatch

Pages 32-33

For access through walls and ceilings



Combihatch

Typical specification clause for Waldor 50 series

Wall access panels shall be Howe Green Ltd Waldor 50 Series manufactured from stainless steel with a patented concealed hinge and fitted with a push pull/security lock*, the cover and outer frame are to be fitted with a stainless steel edge trim*. Door sizes shall bemm H XmmW. All to be manufactured and supplied by Howe Green Ltd, Marsh Lane, Ware, Herts, SG12 9QQ, Great Britain, and installed in accordance with the manufacturers details and site work guide.

* Delete as appropriate.

Waldor 50 Stainless Steel

For access through tiled wall surfaces



Waldor 50

Introduction

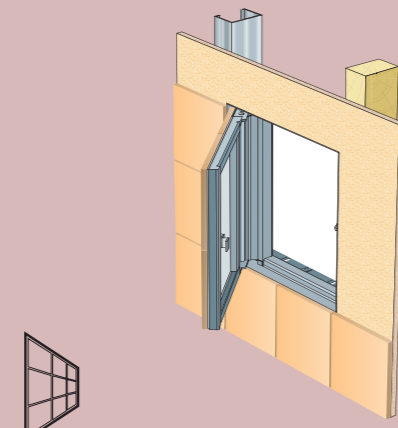
The Howe Green Waldor 50 access panel is designed to give access to concealed services within tiled walls.

Composition and manufacture

Manufactured from 1.5mm thick corrosion resistant stainless steel with patented concealed hinge.

Options

The doors can be fitted with either "push pull" concealed or security locks. Also available is an optional stainless steel show edge for both the door and frame.



Tiled Walls

Size

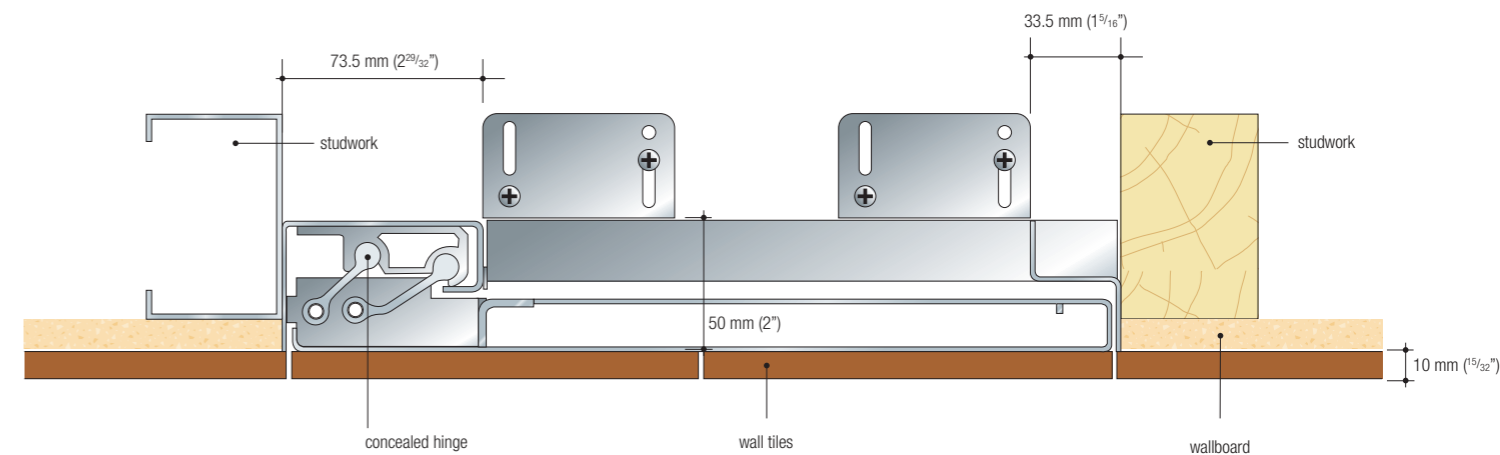
All panels are manufactured to order in 1mm (1/32") increments between the minimum and maximum sizes listed. Minimum door size 300 H X 300 mm (11 1/8" W). Maximum door size 900 H X 600 mm W (35 1/8 x 23 3/8").

Cut out size = door size + 7 mm (1/2")

Clear opening = door size - 24 mm H (1 1/8") and -100 mm W (4")

See installation guide on page 36.

Cross section showing concealed hinges



Typical specification clause for Tile-a-Door+ series

Wall access panels shall be Howe Green Ltd Tile-a-Door+, manufactured from electro-galvanised mild steel with a concealed pivot, the panels are to be fitted with a budget/security lock*. Overall door sizes shall bemm Xmm. All to be manufactured and supplied by Howe Green Ltd, Marsh Lane, Ware, Herts, SG12 9QQ, Great Britain, and installed in accordance with the manufacturers details and site work guide

* Delete as appropriate.

Tile-a-Door+

For access through wall surfaces



Tile-a-Door+

Introduction

The Howe Green Tile-a-Door+, removable wall access panel has been designed to give easy economical access to concealed services.

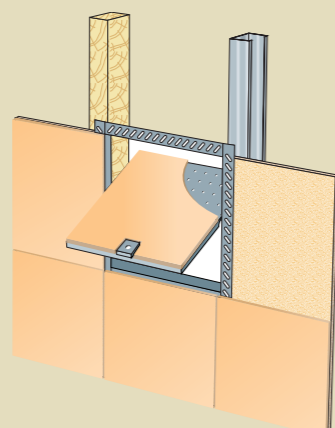
The units are supplied ready to tile, accepting up to a 10mm thick finish.

Composition and manufacture

Manufactured from mild steel electro-galvanised sections and fitted with magnetic latches.

Options

Covers can be fitted with either a budget/security lock or magnetic latch if required.



Tiled Walls

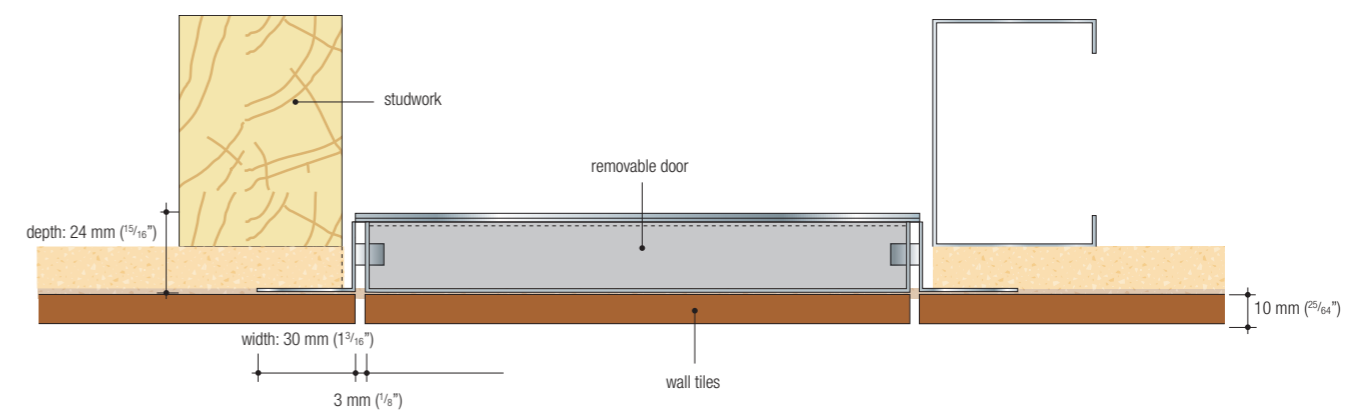
Size

All panels are made to order in 1mm (1/32") increments to suit the tile module. The maximum area of door available is 0.16m² (1.7ft²) e.g. 400 X 400 mm (15 3/8 x 15 3/8") or 600 X 260 mm (23 3/8 x 10 1/4").

There is a nominal gap between cover and frame of 3mm (1/8"). The size of the cut out required in the wall is the door size + 15 mm (1/2").

See installation guide on page 36.

Cross section of Tile-a-Door+



Typical specification clause for Maghatch series

Wall access panels shall be Howe Green Ltd Maghatch series manufactured from electroplated steel with a primer finish. Cut out sizes shall bemm xmm. All to be manufactured and supplied by Howe Green Ltd, Marsh Lane, Ware, Herts, SG12 9QQ, Great Britain, and installed in accordance with the manufacturers details and site work guide.

Maghatch

For access through wall surfaces



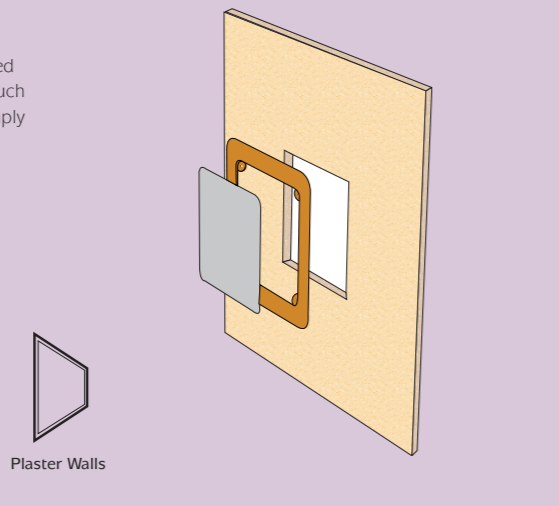
Waldor 50

Introduction

The Howe Green Maghatch access panel is designed to give access to concealed services within walls such as valves or rodding points. The panel frame is simply bonded to the wall using a panel adhesive.

Composition and manufacture

Manufactured from 1.2mm (1/8") thick zinc coated steel finished with a primer coat ready to accept a paint finish.

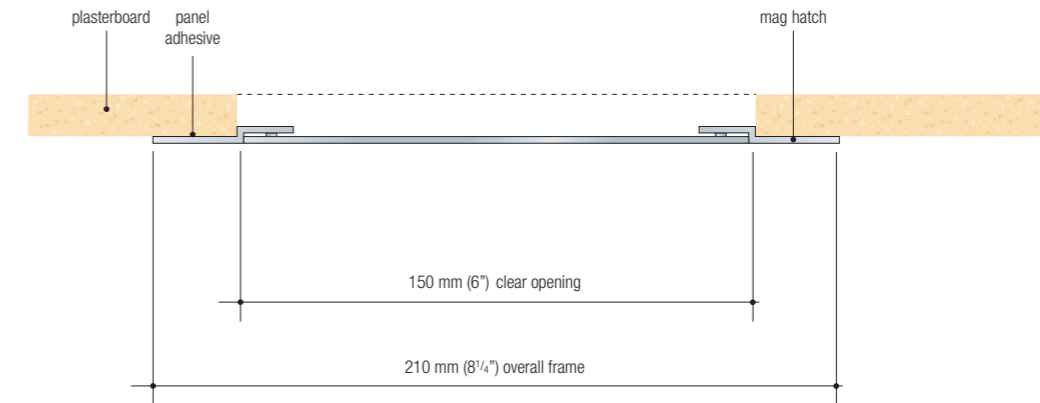


Size

The standard size is 210 X 210 mm (8 1/4 x 8 1/4") overall the outer frame with a 150 X 150 mm (6 x 6") removable panel.

Special sizes are available to order with a maximum removable panel size of 250 X 250 mm (9 7/8 x 9 7/8"). See installation guide on page 36.

Cross section of Maghatch



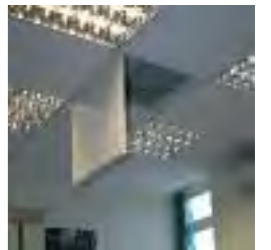
Typical specification clause for Combihatch series

Wall/ceiling access panels shall be Howe Green Ltd. Combihatch series manufactured from electroplated steel with a concealed hinge and fitted with a budget/security lock*, the outer frame is to be fitted with a picture frame/plaster bead*. The door panel shall be metal faced and powder coated to RAL 9003 matt finish. Cut out sizes shall bemm Xmm. Hatches are to be fire rated for 60 minutes to BS 476: Part 20: 1987*. All to be manufactured and supplied by Howe Green Ltd, Marsh Lane, Ware, Herts, SG12 9QQ, Great Britain, and installed in accordance with the manufacturers details and site work guide.

* Delete as appropriate.

Combihatch

For access through walls and ceilings



Combihatch

Introduction

The Howe Green Combihatch access panel is designed to give access to concealed services within walls and ceilings.

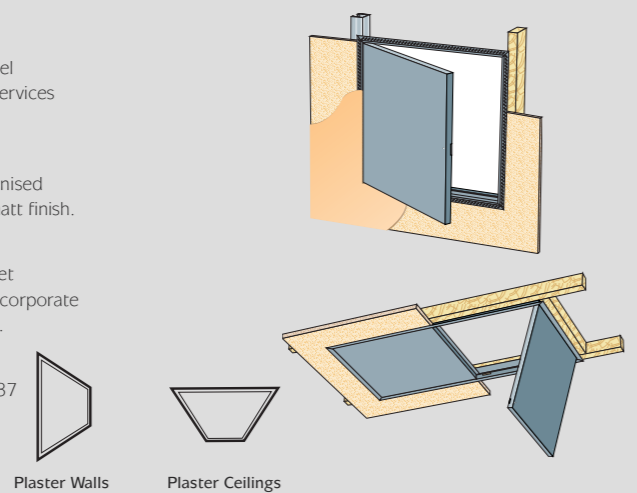
Composition and manufacture

Manufactured from 1.2mm electro-galvanised mild steel, powder coated to RAL 9003 matt finish.

Options

The doors can be fitted with either budget or security locks. The outer frames can incorporate a plaster bead or picture frame surround. Brushed stainless finish.

1 Hour fire rating to BS476: Part 22: 1987



For walls

Single or double leaf non fire rated

Minimum leaf size 300 X 300mm (11 3/4 x 11 3/4").
Maximum leaf size 1000 X 1000mm (39 3/8 x 39 3/8").

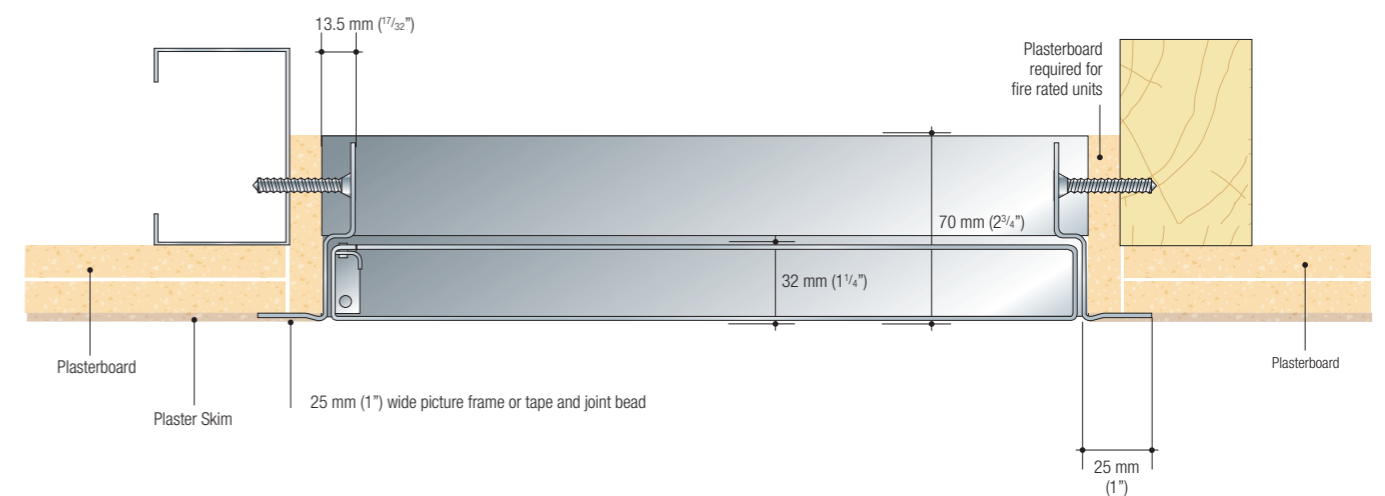
Single leaf fire rated

Minimum leaf size 300 X 300 mm (11 3/4 x 11 3/4").
Maximum leaf size 1026H X 662 mm (40 3/8 x 26 1/8") W or 756 H X 756 mm W (29 3/8 x 29 3/8"). (Any leaf within these aspect ratios can be used as long as the dimensions are not exceeded)

Double leaf fire rated

Minimum leaf size 300 X 300 mm (11 3/4 x 11 3/4").
Maximum leaf size 1026H X 600 mm W (40 3/8 x 23 5/8")

Cross section of Combihatch



For Ceilings

Single or double leaf non fire rated

Minimum leaf size 300 X 300 mm (11 3/4 x 11 3/4").
Maximum leaf size 1000 X 1000mm (39 3/8 x 39 3/8").

Single leaf fire rated

Minimum leaf size 300 X 300 mm (11 3/4 x 11 3/4").
Maximum leaf size 900 X 600 mm (35 3/8 x 23 5/8").

Size

All panels are manufactured to order in 1mm increments between the minimum and maximum sizes listed. Cut out sizes = door size + 10 mm (1/2") (for fire rated units, door size + 35 mm (1 3/8")).

See installation guide on page 36.

Installation guide & sitework details

2500 Series

3500 Series

5000 Series

7500 Series

1050 Series

HSE 75 Series

5 BAR Series

Colouredge

These details are intended as a general guide to correct installation - it is appreciated that site practice can vary depending on the design of slab, type of finish etc.

Further advice is always available from our Technical Department who can be contacted between the hours of 9 am and 5.30 pm on 01920 463230, or alternatively you can email them at info@howegreen.co.uk.

Preparation

Covers are supplied ready for installation internally without further preparation. In external locations, or those that may be permanently wet, all aluminium surfaces in contact with concrete should receive two coats of bituminous paint.

Single covers

1. The cover should be placed into the outer frame and securing bolts screwed in loosely if applicable. For stainless covers bend out anchor lugs.
2. The whole assembly should be bedded down to the correct level. Haunch mortar up on outside of outer frame, to prevent any possible distortion of outer frame when surrounding floor finish is laid.
3. Leave the bedding mortar to cure, then complete the surrounding floor finish.
4. The cover should now be filled (with the exception of the 5 Bar series) without removing it from the outer frame, and using spacers provided between cover and frame. (Note that the design loading and if applicable, fire resistance can only be achieved if the infill is equivalent to the 28 day cube strength of OPC concrete of 40 MPa.)
5. When properly set remove cover and clean taking care not to damage any seals. Make good pointing to the underside of the outer frame. Replace cover.

Duct covers

1. The outer frame will be either of one piece construction if size permits or sectional if large. If it is sectional several covers will have been screwed into the outer frame sections (these should now be loosened) to pre-space to the correct span dimensions if possible. If the unit incorporates steel beams, the beam receiving pockets (if not already attached to the outer frame) should be fitted using the screws provided. Fix stop ends to the end of the outer frame section with connecting spigots supplied. These are only for the purpose of locating one length of outer with the next and are not intended to provide a full strength joint.
2. Fix anchor lugs to the outside edge of the outer frame by crimping with pliers at approx. 600 mm (24") centres. For stainless covers, bend out anchor lugs.
3. Place all of the removable cross members into position, (if fitted) then bed frame down to correct line and level, (if the frame is sectional working away from the stop end) making sure that the frame remains straight and is not distorted in any way. If universal beams are incorporated they require levelling by placing packing mortar between base of beam pocket and loose beam seating plates supplied.
4. As work proceeds place loose covers into duct frame to check that the gap between the outer frames is correct making sure that spacers supplied are used between cover and frame to maintain a minimum 1mm joint.
5. When outer frame is properly set remove any "spacer" covers that have been screwed into the outer frame and place in correct position in the duct frame along with all of the loose covers making sure that spacers are used to maintain a minimum 1mm (1/2") joint between the cover and frame, and bolts if fitted

are screwed in loosely. The covers may now be filled (with the exception of the 5 Bar series) and the floor finish to the outside of the outer frame completed. Again taking care not to distort either the cover or the outer frame sections. Larger span covers may require propping from below to prevent distortion caused by the weight of the wet concrete infill. (Note that the design loading and if applicable, fire resistance can only be achieved if the infill is equivalent to the 28 day cube strength of OPC concrete of 40 MPa.)

6. When properly set the covers should be removed, and cleaned taking care not to damage any seals, the joint between the cross members, (if fitted) and outer frame should be sealed with mastic.

HSE 75 series

1. Remove the hinge securing bolts, then lift out the cover from the outer frame. Assemble the lower gas spring fixing brackets with the outer frame using the bolts supplied.
2. Bed the outer frame on mortar to the correct line and level ensuring that the lower gas spring brackets are in contact with the vertical concrete face of the pit wall.
3. Mark and drill the 8 fixing holes through the lower gas spring brackets into the vertical concrete face of the pit wall, and then bolt to the concrete using suitable fasteners.
4. At this stage the cover should be positioned within the outer frame and the hinges bolted to outer frame, the safety stay should also be attached using the bolts provided. The hinges should now be adjusted to provide a minimum 1mm gap between the cover and frame (stainless version only), the spacers provided should be used to maintain the minimum 1mm gap. Haunch mortar up on outside of outer frame, to prevent any possible distortion of outer frame when surrounding floor finish is laid.
5. Leave the bedding mortar to cure, then complete the surrounding floor finish.
6. The cover should now be filled without removing it from the outer frame. (Note that the design loading and if applicable, fire resistance can only be achieved if the infill is equivalent to the 28 day cube strength of OPC concrete of 40 MPa.)
7. When properly cured the cover should be lifted with care using the keys provided making sure the safety stay engages. The cover and frame should be thoroughly cleaned taking care not to damage any seals or intumescent strip fitted. Make good pointing to the underside of the outer frame.
8. The gas springs should now be screwed into position, then the cover can be gently lowered and locked into the closed position.

Lifting and maintenance procedures

1. Remove all bolts from the lifting points using key provided except the 5 Bar series where the bolts should be loosened.
2. Screw in by 12-15 mm (1/2 - 3/4") a lifting key into each lifting point except the 5 Bar series where the key should be positioned under the bolt head. A lifting device should be used where the weight to be lifted exceeds the Manual Handling Operations Regulations 1992.
3. Lift out cover without dragging across outer frame to avoid damage.
4. Clean thoroughly both the seating and cover checking the condition of the double base seal and intumescent seal if fitted, also checking the top edge dirt seal. Then re-treat the underside of the cover with waxoyl or similar inhibitor if required.
5. Check condition of gas springs on HSE 75 series.
6. Replace cover carefully and insert all securing/plug bolts taking care not to over tighten.

Should any of the seals, bolts or other removable components be damaged or missing they are available for replacement.

Installation guide & sitework details

Visedge Series

Visedge DS Series

Visedge VR Series

Visedge series access covers – Single covers

Set the cover in the outer frame, fitting the securing or blanking bolts supplied. Maintain a 1 mm (1/32") gap between the cover and the frame sections.

Lay the screed up to the outer frame, ensuring that the PVC extrusion is kept clean.

When the screed has cured and the installation of the sheet flooring is about to commence, remove the protective tape from the PVC extrusion on both the cover frame and the outer frame. Cut the flooring material up to the upstand of the PVC extrusion on the outer frame and lay into position, using adhesive as necessary. In similar manner cut the flooring material within the cover frame up to the upstand of the PVC extrusion and under the clamping ferrules around the lifting/locking bolts, and bond with adhesive. The floor finish should then be welded, in accordance with the manufacturer's instructions, to the top edge of the PVC extrusions, on both the cover frame and the outer frame. Screw down the clamping ferrules until they are flush with the floor finish.

Finally lift out and clean the cover. Point the underside of the frame with 1:3 cement/sand mortar, if necessary. Replace the cover and tighten the securing bolts.

Remember to leave the lifting/locking keys with the building owner.

Visedge series access covers – Duct covers

These are installed in a similar way to the duct covers for the 5000 and 7500 series. See previous page.

Visedge DS edge trim

When the flexible flooring has been fixed, cut the lengths of Visedge DS to suit the floor layout. Starting from one end, place a length of trim in position and mark the floor through the countersunk holes in the trim, then drill and plug the floor. When ready to fix the trim, apply some epoxy adhesive to the underside of the trim, then carefully position the trim and screw down.

Visedge VR edge trim

Mark out the floor to define the junction between the hard paving and the sheet flooring, i.e. the extremity of the aluminium upstand of the Visedge VR trim. Cut lengths of trim to suit and place in position. Mark the floor through the countersunk holes in the trim, then drill and plug the floor where applicable. The Visedge VR trim should now be screwed into position taking care to keep the correct line and level. The hard paving, e.g. ceramic tiling, and the vinyl floor screeding can now be laid as necessary. It is important that the pvc insert is kept clean and that the protective tape remains intact and is not removed until the floor finish is ready for bonding. Cut and fit the vinyl sheet flooring to the Visedge upstand, bond and weld.

If in doubt, contact the Howe Green Technical Department, who will be pleased to assist.

Installation guide & sitework details

Waldor 50

Tile-a-Door+

Maghatch

Combihatch

These details are intended as a general guide to correct installation - it is appreciated that site practice can vary depending on the type of materials used etc.

Further advice is always available from our Technical Department who can be contacted between the hours of 9am and 5.30pm on 01920 463230, or alternatively you can email them at info@howegreen.co.uk.

Maghatch

Place the face of the outer frame against the wall, and mark the hole position. Remove the outer frame and extend the marked lines to the corners to form a square or rectangular shape for the cut out.

Cut a hole in the wall board using a suitable saw.

Apply proprietary panel adhesive around opening then place outer frame into position.

The outer frame and cover can now be decorated separately and allowed to dry. Once dry the cover can be put into place to complete the installation.

Combihatch

The construction of the opening should be as follows, for non fire rated units the "cut out" in studwork should be fully trimmed. For fire rated units again the aperture should be fully trimmed, though for metal "C stud" the aperture surround should be boxed out using twin sections of "C stud". All box sections of 60 minute assemblies must be infilled with plasterboard to mitigate against an excessive distortion of the supporting construction.

Remove the doors from the outer frame by releasing the spring loaded hinge pins, for non fire rated assemblies the outer frame should be placed into position and secured using 8 X 38mm (1 1/2") steel screws at 200 mm (8") centres using holes provided, taking care not to distort the frame. For fire rated assemblies the "cut out" aperture should be lined with 12.5 mm (1/2") plasterboard, then the outer frame should be positioned and then secured using 8 X 50 mm (2") steel screws at 200mm (8") centres using holes provided, taking care not to distort the frame.

If the frame incorporates a plaster bead, the wall/ceiling should now be skimmed.

Once the frame installation is complete a 6mm (1/4") drill should be run through the hinge pin holes in the frame to ensure that the hinge pins will enter by at least 6mm (1/4").

The door should now be re-fitted and closed and any final decoration should be completed.

Tile a Door+

If there is no pre-formed opening for the Tile a Door+, mark the area of wall where the opening is required by projecting the tile grid lines. Once marked, the hole should be cut allowing an extra 6mm (1/4") clearance all round. If fitting to thin sheet or plasterboard, it is advisable to stiffen the cut edges with studwork.

Fit the frame into position using either a suitable adhesive or screws, ensuring that the magnets or lock are at the bottom of the panel.

Tile the panel and surrounding area as normal. Please note that if the opening in the wall was preformed then the tiling would have to be set out from the Tile a Door+. Once the adhesive has set the tiling should be grouted in as normal, leaving out the grout line around the door.

To open the door, release the lock if fitted, then push the top of the panel inwards. Once the base of the door can be gripped, slide the panel inwards and up to release it from the pivot points.

The door can now be lifted out and stored safely.

Waldor 50

If there is no pre-formed opening for the Waldor 50, mark the area of the wall where the opening is required by projecting the tile grid lines. Once marked the hole should be cut allowing an extra 5mm (3/16") clearance all round. If fitting to thin sheet or plasterboard, the opening should be trimmed using suitable studwork.

Fasten the fixing brackets to the top and bottom of the access cover outer frame, using the screws provided. The access cover can now be fixed top and bottom to the wall or studwork through the previously attached brackets. If edge trims or a security lock has been specified then the face of the door should be set back 12mm (1/2") from the face of the surrounding tiling.

Once the frame has been secured and the hatch closed, proceed to tile over the door face and complete the surrounding wall finish. Take care to ensure that a 2mm (3/64") joint between the door and the surrounding tiles is maintained.

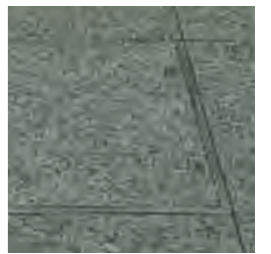
Once the tiled finish has set, carefully open the door to ascertain whether any door adjustment is required to maintain a constant door surround gap. Should any adjustment be needed open the door fully, then release both of the securing screws holding the hinge block (5mm Allen key ; supplied) found on the inside rear edge of the frame. Carefully lift/move the door to the desired position, and then re-fasten the hinge block to the new position. Re-close the door and check the door gap, re-adjust as necessary.

Should any of the seals, bolts or other removable components be damaged or missing they are available for replacement.

Case Study

Northern Ticket Hall, Kings Cross Tube Station, London

Product 7500 series floor access covers



Architect: Capita Architecture

Situated beneath ground between the platforms of the newly redeveloped St Pancras station and Kings Cross station the Northern Ticket Hall is a new entrance and ticket hall to King's Cross underground. This second phase of a larger scheme, that has also seen the addition of a ticket hall at the front entrance to St Pancras Station, will lessen passenger journey times and ease congestion considerably. The developments will cater for the added demand required by mainline and Eurostar services.

The scheme was designed by Capita Architecture and overseen by a joint venture between Balfour Beatty Civil Engineering and Balfour Beatty Engineering Services. DMC Rail, a division of the DMC Group specially developed to provide specialised services to London Underground and Network Rail, was responsible for all internal works. Internal works included the screeding and tiling of tunnels, the building of ticket offices and the creation of flooring – including the installation of 60 of Howe Green's 7500 series access panels.

Howe Green's 7500 series stainless steel access covers were chosen to provide safe and unobtrusive access to essential floor based building services including ventilation ducting, electrics, communication cables and rail services. In this challenging environment access panels that offered fire resistance along with the ability to withstand massive amounts of foot traffic were required.

Performance

Two types of Howe Green's 7500 Series stainless steel covers were used on the project. As well as single covers, the company's innovative multi-part covers were also used. A series of panels set into one larger frame, they grant simple access to complex junctions of service utilities. Purpose designed for a variety of different floor finishes, the heavy

duty covers have the capability to cope with up to a 5 tonne pneumatic wheel load.

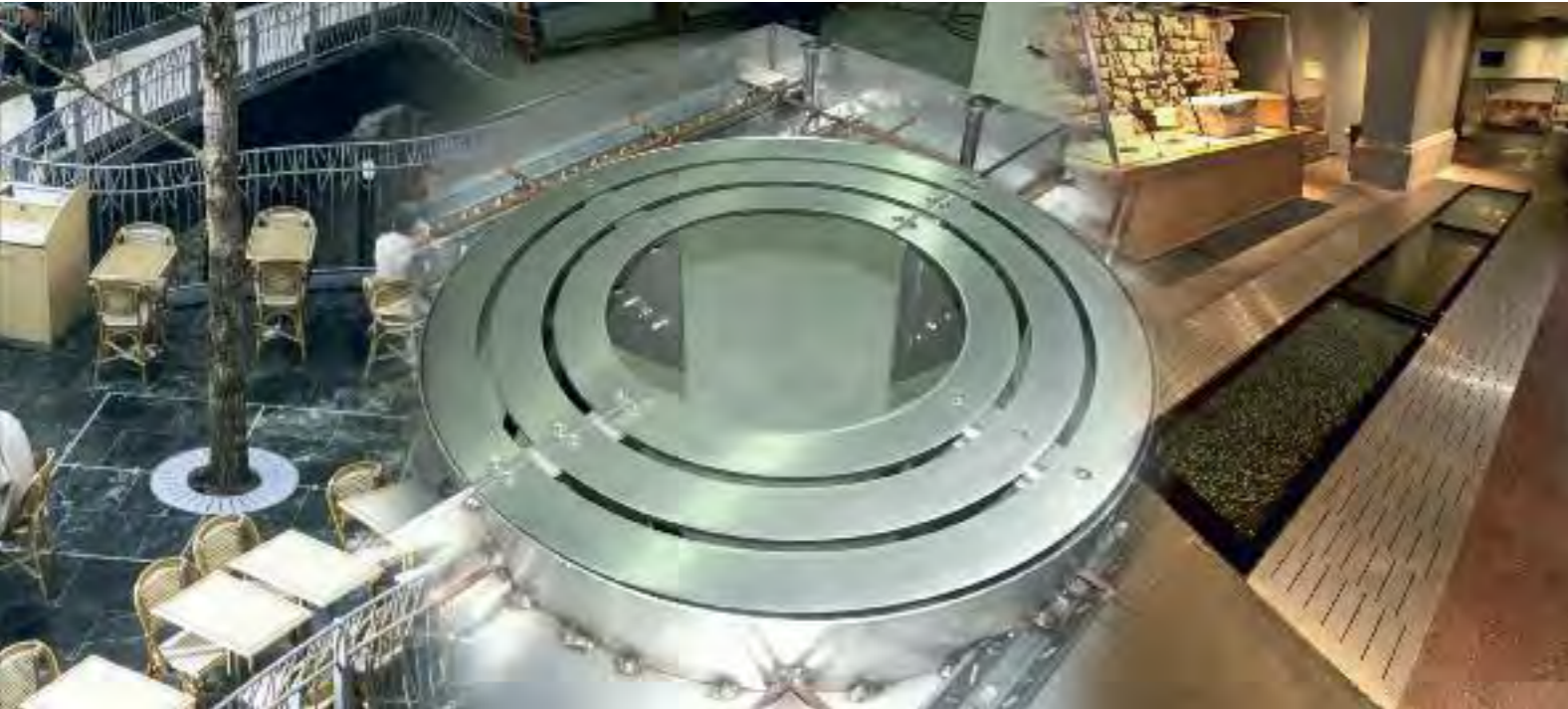
Crucially, especially given their installation on the London Underground, all Howe Green access panels are available as tamper resistant units, ensuring complete security, with special lifting keys provided for ease of access.

Sitting flush with the floor to prevent any trips, they provide quick, easy and safe access to the concealed services underneath. The panels are double-sealed to meet the highest standards of hygiene and security, while staying corrosion resistant and maintenance-free. With up to a three hour fire rating in line with BS 476: Part 20:1987 Howe Green's 7500 series access covers would prevent the passage of fire through service channels. Combined with the capability to tolerate extreme footfall the 7500 series offered the perfect solution for the challenges presented by the new Northern Ticket Hall.

Installation

Each panel was individually manufactured by Howe Green to the exact requirements of both the flooring and building services contractors. Using the latest manufacturing techniques, Howe Green offers specifiers and contractors individually produced panels without the high costs and extended lead times normally associated with bespoke products.

To install the panels, operatives from DMC Rail set them flush into the floor substrate. The covers follow the floorline exactly so do not represent a trip hazard. The cover panels were then filled with screed and completed with tiles specially manufactured for the London Underground. The pattern of the tiles was exactly matched to the surrounding flooring pattern, ensuring an uninterrupted and aesthetically pleasing surface.



Our ability to respond to customer requirements is what makes Howe Green different. We have a reputation, built over many years, for solving problems. Working together with customers we use our industry knowledge, technical expertise and cutting edge equipment to deliver solutions that will overcome the challenges they face.

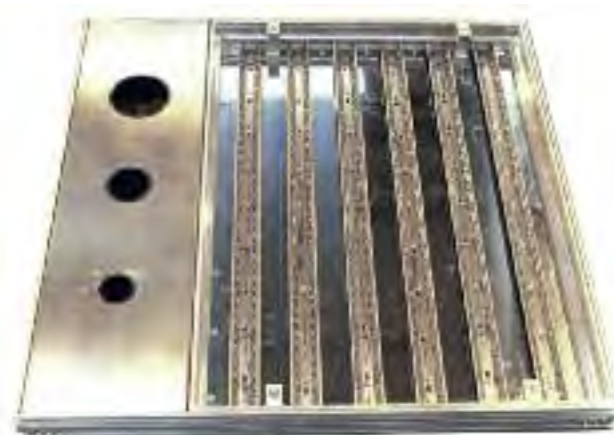
Investment in computer design software and C.N.C. machinery enables us to manufacture items such as special purpose access covers, edge trims and corner guards quickly, accurately and cost effectively.

Utilising a highly automated system ensures that Howe Green can produce the components required to the exact specification required. Custom made access covers and other "specials" can be handled swiftly and efficiently helping to reduce installation times on site.

Howe Green is routinely asked to provide solutions to specific site problems and requirements, examples of our "specials" include:

- Mosaic trim for underground tunnels, used by London Underground at Kings Cross Station.
- Stainless steel brackets for stone wall cladding hanging system.
- Tree planter covers to help reduce slip and trip hazards, as used at T5 Heathrow.
- Corner guards for tiled walls, as used by London Underground where new guards were commissioned to match in with existing trims for Shepherd's Bush station.
- Trunking systems to complement the Howe Green range of floor access duct covers.
- Floor access covers to fit within raised access floors, for example in canteens where a water resistant access is required to concealed services.
- Two bespoke runs, each measuring 5 metres x 0.5 metre, of brushed stainless steel floor access covers to sit alongside a glass floor at the Roman Baths visitor attraction in Bath.

Howe Green is a truly customer focused and driven company. Many of our existing access covers have been developed as the result of a customer request for a solution to a particular access problem or situation. We remain committed to listening to our customers and responding to their requirements, in this way our product range will continue to evolve and be demand led.



Suitable for a wide range of applications including changing rooms, shower areas, spas, kitchens, laboratories, veterinary surgeries and other areas that require drainage, Howe Green's range of channel drains offer durability and performance.

Suitable for a wide variety of floor types, manufactured from corrosion resistant stainless steel and come in a choice of grate finish to suit most applications. Available with level or sloping channels, they are supported by outlets and junctions to provide a complete channel drain solution.

HG100

The HG100 linear drainage channel is available in modular form to suit most site situations including both level or sloping invert. It is also available as a made to measure system to suit specific requirements.

It is available in either 304 or 316 austenitic stainless steel. The system provides an easy to clean, hygienic solution. As it is produced from stainless steel it is also 100% recyclable and requires little maintenance.

HG200

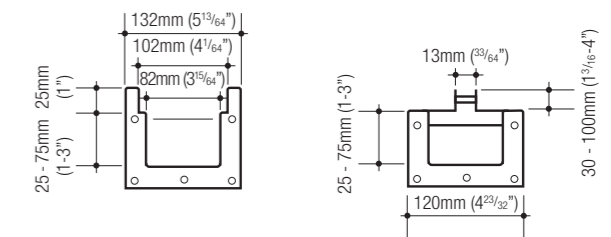
The HG200 slot drain is available in modular form to suit most site situations including both level or sloping invert. It is also available as a made to measure system to suit specific requirements.

It is available in either 304 or 316 austenitic stainless steel. The system provides an easy to clean, hygienic solution. As it is produced from stainless steel it is also 100% recyclable and requires little maintenance.



HG100

HG200



Features and benefits

- Channels can be fitted into most types of floor finish e.g. ceramic tiles or resin.
- Normally fabricated from austenitic grade 304 stainless steel, however 316 grade is also available if required.
- Standard 50, 60, 75 or 110mmØ spigot outlet.
- Choice of grating design for HG100 or "slot" finish for HG200
- Constant invert or variable inverts available.
- Channels can be manufactured to suit specific layout requirements.

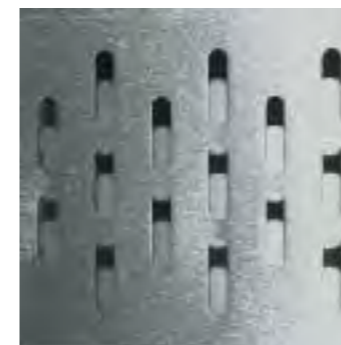
Options

Shower grating with 20x5mm (3/4 x 13/64") slots, locked down gratings.

Anti-slip ladder grating with 1.5mm (1/16") bars and 11.5mm (23/64") spacing between, locked down gratings.

Fine linear grating with 1.5mm (1/16") bars and 5mm (13/64") spacing between, locked down gratings.

Polymer grating with 8mm (5/16") wide slots, locked down gratings.



Cover Skate - floor access cover maintenance

Make light work of lifting heavy floor access covers. The Howe Green Cover Skate is the ingenious way to lift heavy floor access covers. Simple, convenient and extremely portable you can carry the Cover Skate in a bag and lift even the heaviest of covers on your own – safely, easily and quickly.

Features and benefits

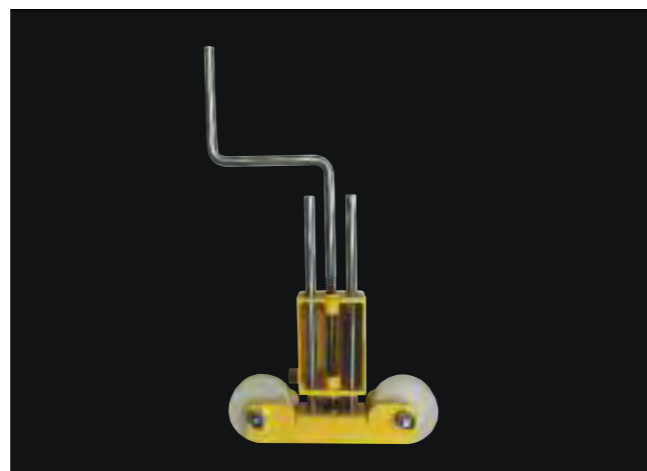
The Cover Skate means you need less people to do the job and don't have to worry about the health and safety issues that come with using bigger pieces of equipment. Suitable for use in all types of locations from airports, factories and hospitals to hotels, offices and schools the Cover Skate gives you access to concealed services quickly, safely and cost effectively.

The Howe Green Cover Skate is the ingenious way to lift heavy floor access covers. Simple, convenient and extremely portable you can carry the Cover Skate in a bag and lift even the heaviest of covers on your own – safely, easily and quickly.

- Easy to carry and store
- Very durable and corrosion resistant
- Simple and quick to use
- 300kg lift from each "cover skate"
- Lifting keys to suit other manufacturers covers available to order

Instructions for use

1. Remove cover securing bolts.
2. Place a "Cover Skate" over a cover lifting point with the wheels outside the outer frame.
3. Remove the cover skate bolt from the storage position and screw into the cover lifting point until fully home and hand tight, ensuring that the base of the Cover Skate is flush with the cover.
4. Take the second Cover Skate and repeat the above on the diagonally opposite lifting point.
5. Turn the jacking handle clockwise on one of the Cover Skates until the cover edge has lifted by approximately 1cm.
6. Now using the second Cover Skate lift the other side of the cover by approximately 1cm.
7. The cover should now be raised as evenly as possible using the two Cover Skate's until it is clear of the outer frame.
8. Carefully wheel the cover to one side of the opening, making sure that the hole is cordoned off to prevent falls.
9. To replace the cover ensure that the cover and the frame are clean and then follow the above in reverse order.





HOWE GREEN
We've got you covered

Howe Green Limited, Marsh Lane, Ware, Hertfordshire SG12 9QQ U.K.
Tel: + 44 (0)1920 463230 Fax: +44 (0) 1920 463231
Email: enquiry@howegreen.co.uk Website: www.howegreen.co.uk