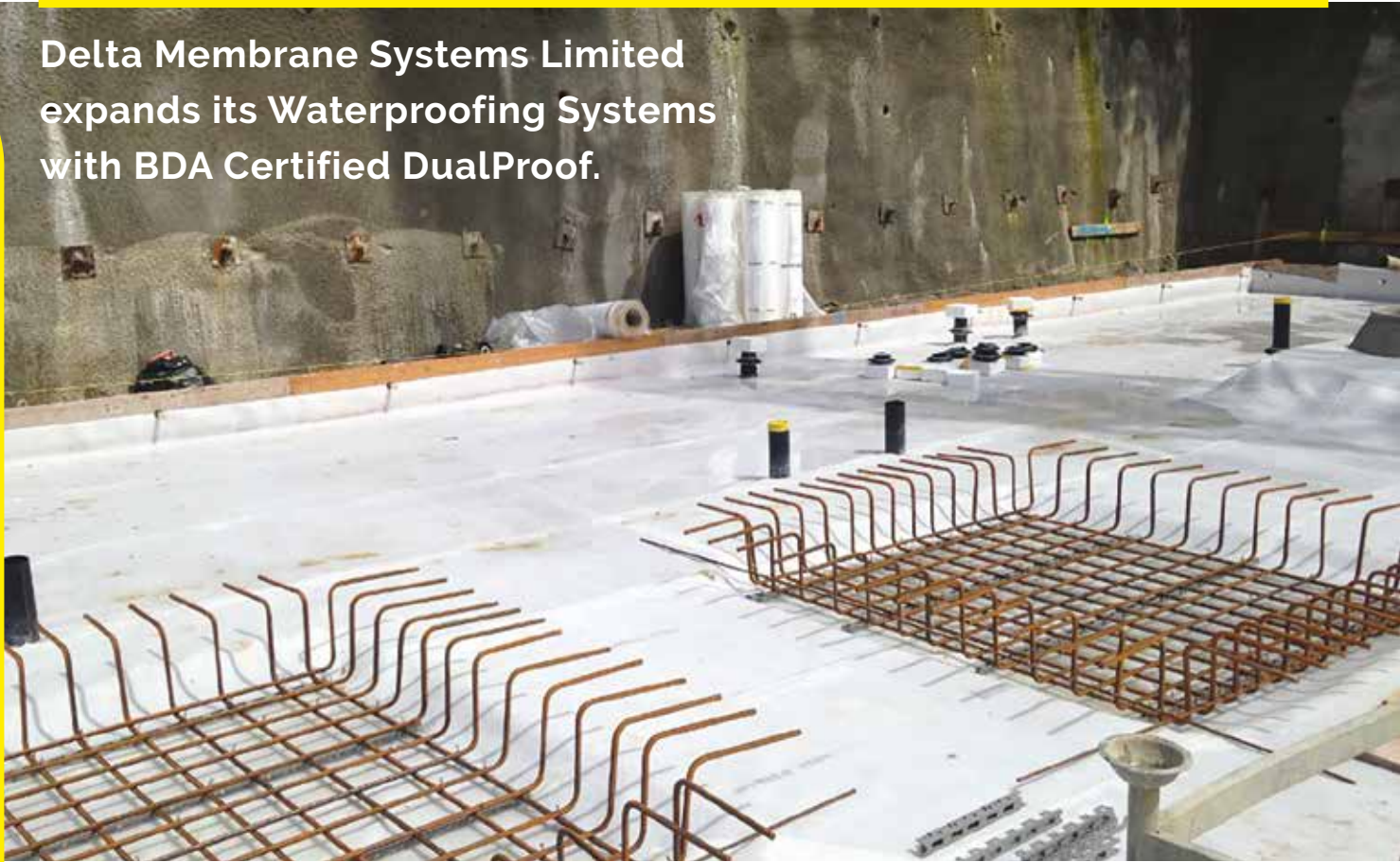


Delta Membrane Systems Limited expands its Waterproofing Systems with BDA Certified DualProof.

LATEST NEWS



Delta Membrane Systems Limited is delighted to announce Dualproof has been certified by KIWA (European Institution for Testing, Inspection and Certification).

The BDA Agrément® process is designed to underpin the 'fitness for purpose' of products destined for the European construction market. Products are examined and rigorously tested following precise installation instructions.

It is one of the UK's major authorities recognised by building control, government departments, architects, local authorities, specifiers and industry insurers.



DualProof is a Type A waterproofing pre-applied, sealed two layer highly flexible PVC membrane laminated with a non-woven PP-fleece, composite waterproofing membrane which forms a permanent mechanical bond with freshly poured concrete preventing the tracking of water between the waterproofing membrane and the concrete sub-structure.

DualProof is a robust, flexible and high-performance waterproof, damp proof, gas proof membrane and gives concrete protection against chemicals. Tough and resistant, quick and easy to install, high compound with shear strength. DualProof can be installed in every season, regardless of temperature and weather condition. One of the many advantages to DualProof is that it prevents any lateral water

migration between the waterproofing membrane and the structural concrete.

QUALITY ASSURANCES

The BDA Agrément strengthens Delta's DualProof brand. BDA Agréments are a mark of excellence, ensuring products are safe, high quality, reliable and regulatory compliant. Products are examined and rigorously tested following precise installation instructions. Agréments confirm the compliance and durability of DualProof under the specified method of installation.

The BDA Agrément® process considers:

- European product standards, relevant codes of practice and test reports
- Independently verified product characteristics
- Factory production control
- Annual verification procedures
- Points of attention for the specifier and specific details
- Installation procedure
- Compliance with Building Regulations and any other required standards
- Boundaries of use (restriction to geographical scope)
- Validity

A visible sign of conformity is DualProof's CE Mark. The CE Mark denotes conformity that DualProof satisfies European Laws relating to European CEN Standards.

"Our approach to structural waterproofing utilises research and strategy as the foundation to all design ideas and rationale. Every waterproofing, damp proofing, ground gas or flood resilience project is unique, but all start with one thing in common – the requirement of waterproofing design specialists. The only way to solve a problem is to understand it from every angle. Luckily, we've got a proven process to quench our insatiable curiosity. The BDA certification of Dualproof epitomises the quality in our approach to structural waterproofing solutions."

