

Pneutek Solutions UK Ltd

Established 2004

Catalogue & Price List



COST EFFECTIVE PNEUMATICS

Reasons to Buy From Pneutek Solutions

Single Source Supplier For All Your Pneumatic Requirements

High Quality Products at Cost Effective Prices

Technical Sales Support From Engineers

Control Panel and Circuit Build Capabilities

No Minimum Order Charge and Easy to Deal with Staff

Order On-Line, Fax or Telephone

Great Stock Levels with Same Day Despatch

24 Hour Cylinder Manufacture and Delivery

25 Years Experience in the Automation Industry

Low Cost Delivery Charges from as little as £6.95

Competitive Prices with Volume Discount Available

Pneutek Solutions UK Ltd

Unit 31, Argyle Crescent, Hillhouse Workshops

Hillhouse Industrial Estate,

Hamilton, South Lanarkshire, ML3 9BQ

Telephone: 01698 540642

Fax Line : 01698 540478

Email : info@pneuteksolutions.co.uk

www.pneuteksolutions.co.uk

Index

Pneumatics Catalogue

Welcome to the latest edition of the Pneutek pneumatics catalogue and price list. As you will see, we have taken this opportunity to increase the range of products available.

We have expanded our range of plastic and all metal fittings to our range of "all metal" push-in fittings. In addition to this we have added a complete range of 316 stainless steel push-in fittings as well as a comprehensive range of airline adaptors, exhaust silencers, solenoid valves and polyurethane tubing.

Page 4
Plastic Fittings



Page 14
Flow Controls



Page 16
Metal Fittings



Page 22
Stainless steel fittings



Page 25
Airline Adaptors



Page 30
Silencers



Page 36
Filter Regulators



Page 31
Brass Ball Valves



Page 32
Manifolds



Page 33
Quick Couplings



Page 34
Tubing and Hoses



Page 40
Cylinders



Page 45
St. Steel Compression



Page 46,47
Manual Valves



Page 46
Mechanical Valves



Page 48
Solenoid Valves



Page 48
Air Solenoid Valves



Page 51
Pilot and ISO Valves



Page 52
Q/Exhaust, Non return,
Sleeve and flow control Valves



Page 53
Pressure Switches



Page 54
Air Logic Valves



Page 56
Actuated Valves



Page 61
St. Steel Ball Valves



Please contact Pneutek Solutions for all technical information in this catalogue. The dimensions and technical information are provided solely for information and may be subject to change without notice.

Plastic Fittings

Technical Data: Fittings

Fluid Air, Vacuum

Pressure Rating Plastic: 0-10 bar

Pressure Rating Metal : 0-16 bar

Vacuum -14.5 psi (-1 bar)

Operating Temperature

Technopolymer Fittings 0 to +60°C

Metal/Stainless Steel Fittings -20°C to +80°C

Tube Nylon, Polyurethane

Male Stud - Taper Thread



	Tube (mm)	Thread (BSP)	Price
100 001	4	1/8"	£0.81
100 002	4	1/4"	£0.86
100 003	6	1/8"	£0.86
100 004	6	1/4"	£0.92
100 005	6	3/8"	£1.14
100 006	8	1/8"	£1.04
100 007	8	1/4"	£1.06
100 008	8	3/8"	£1.16
100 009	8	1/2"	£1.76
100 010	10	1/8"	£1.24
100 011	10	1/4"	£1.24
100 012	10	3/8"	£1.28
100 013	10	1/2"	£1.58
100 014	12	1/4"	£1.60
100 015	12	3/8"	£1.66
100 016	12	1/2"	£1.82
100 017	14	3/8"	£3.34
100 018	14	1/2"	£3.54
100 019	16	3/8"	£3.72
100 020	16	1/2"	£3.84

Male Stud - Mini Fittings



	Tube (mm)	Thread (BSP)	Price
100 021	4	M5	£1.22
100 022	4	1/8"	£1.28
100 023	6	M5	£1.34
100 024	6	1/8"	£1.36

Male Stud - Parallel Thread



	Tube (mm)	Thread (BSP)	Price
111 001	4	1/8"	£0.83
111 002	4	1/4"	£0.86
111 003	6	1/8"	£0.86
111 004	6	1/4"	£0.92
111 005	6	3/8"	£1.15
111 006	8	1/8"	£1.02
111 007	8	1/4"	£1.06
111 008	8	3/8"	£1.18
111 009	8	1/2"	£1.72
111 010	10	1/8"	£1.29
111 011	10	1/4"	£1.25
111 012	10	3/8"	£1.30
111 013	10	1/2"	£1.62
111 014	12	1/4"	£1.62
111 015	12	3/8"	£1.68
111 016	12	1/2"	£1.86
111 017	14	3/8"	£3.34
111 018	14	1/2"	£3.54
111 019	16	3/8"	£3.72
111 020	16	1/2"	£3.84

Straight Female Adaptor - Parallel Thread



	Tube (mm)	Thread (BSP)	Price
100 028	4	1/8"	£1.64
100 029	4	1/4"	£2.04
100 030	6	1/8"	£1.72
100 031	6	1/4"	£1.72
100 032	6	3/8"	£2.86
100 033	8	1/8"	£1.88
100 034	8	1/4"	£2.26
100 035	8	3/8"	£3.02
100 036	10	1/8"	£2.39
100 037	10	1/4"	£2.50
100 038	10	3/8"	£3.16
100 039	12	1/4"	£3.38
100 040	12	3/8"	£3.54
100 041	12	1/2"	£3.76

Swivel Elbow - Taper Thread



	Tube (mm)	Thread (BSP)	Price
100 042	4	1/8"	£1.32
100 043	4	1/4"	£1.40
100 044	6	1/8"	£1.36
100 045	6	1/4"	£1.46
100 046	6	3/8"	£1.68
100 047	8	1/8"	£1.60
100 048	8	1/4"	£1.68
100 049	8	3/8"	£1.76
100 050	8	1/2"	£2.64
100 051	10	1/8"	£2.22
100 052	10	1/4"	£2.16
100 053	10	3/8"	£2.22
100 054	10	1/2"	£2.62
100 055	12	1/4"	£2.62
100 056	12	3/8"	£2.77
100 057	12	1/2"	£2.92
100 058	14	3/8"	£3.60
100 059	14	1/2"	£4.22
100 060	16	3/8"	£3.72
100 061	16	1/2"	£4.52

Swivel Elbow - Parallel Thread



	Tube (mm)	Thread (BSP)	Price
100 062	4	1/8"	£1.35
100 063	4	1/4"	£1.43
100 064	6	1/8"	£1.36
100 065	6	1/4"	£1.46
100 066	6	3/8"	£1.70
100 067	8	1/8"	£1.60
100 068	8	1/4"	£1.68
100 069	8	3/8"	£1.76
100 070	10	1/8"	£2.22
100 071	10	1/4"	£2.19
100 072	10	3/8"	£2.22
100 073	10	1/2"	£2.67
100 074	12	1/4"	£2.67
100 075	12	3/8"	£2.77
100 076	12	1/2"	£2.94
100 077	14	3/8"	£3.88
100 078	14	1/2"	£4.42
100 079	16	3/8"	£3.72
100 080	16	1/2"	£4.52

45° Swivel Elbow - Parallel Thread



	Tube (mm)	Thread (BSP)	Price
101 020	4	1/8"	£1.58
101 021	4	1/4"	£1.98
101 022	6	1/8"	£1.70
101 023	6	1/4"	£1.98
101 024	6	3/8"	£2.86
101 025	8	1/8"	£2.02
101 026	8	1/4"	£2.20
101 027	8	3/8"	£3.23
101 028	10	1/8"	£3.43
101 029	10	1/4"	£3.54
101 030	10	3/8"	£3.77
101 031	10	1/2"	£5.45
101 032	12	1/4"	£4.98
101 033	12	3/8"	£5.44
101 034	12	1/2"	£5.54

Swivel Elbow - Mini Fittings



	Tube (mm)	Thread (BSP)	Price
101 035	4	M5	£1.70
101 036	4	1/8"	£1.75
101 037	6	M5	£1.70
101 038	6	1/8"	£1.78

Extended Swivel Elbow - Mini Fittings



	Tube (mm)	Thread (BSP)	Price
101 039	4	M5	£2.04
101 040	4	1/8"	£2.09
101 041	6	M5	£2.15
101 042	6	1/8"	£2.20

Banjo Elbow - Parallel Thread



	Tube (mm)	Thread (BSP)	Price
100 121	4	M5	£2.04
100 122	6	M5	£2.12

Banjo Elbow Parallel Threads



	Tube (mm)	Thread (BSP)	Price
PEL 04 - 01	4	1/8"	£2.60
PEL 06 - 01	6	1/8"	£2.64
PEL 06 - 02	6	1/4"	£2.71
PEL 06 - 03	6	3/8"	£3.72
PEL 08 - 01	8	1/8"	£4.77
PEL 08 - 02	8	1/4"	£2.98
PEL 08 - 03	8	3/8"	£3.89
PEL 08 - 04	8	1/2"	£4.62
PEL 10 - 02	10	1/4"	£3.84
PEL 10 - 03	10	3/8"	£4.02
PEL 10 - 04	10	1/2"	£4.66
PEL 12 - 03	12	3/8"	£4.66
PEL 12 - 04	12	1/2"	£4.98

Female Swivel Elbow - Parallel Thread



	Tube (mm)	Thread (BSP)	Price
100 123	4	M5	£2.15
100 124	4	1/8"	£1.88
100 125	4	1/4"	£2.01
100 126	6	M5	£2.29
100 127	6	1/8"	£1.80
100 128	6	1/4"	£1.98
100 129	6	3/8"	£2.39
100 130	8	1/8"	£2.15
100 131	8	1/4"	£2.28
100 132	8	3/8"	£2.45
100 133	10	1/4"	£3.06
100 134	10	3/8"	£3.14
100 135	10	1/2"	£3.73

Branch Swivel Tee - Taper Thread



	Tube (mm)	Thread (BSP)	Price
100 136	4	M5	£2.28
100 137	4	1/8"	£2.12
100 138	4	1/4"	£2.04
100 139	6	M5	£2.50
100 140	6	1/8"	£2.24
100 141	6	1/4"	£2.32
100 142	6	3/8"	£2.77
100 143	8	1/8"	£2.50
100 144	8	1/4"	£2.60
100 145	8	3/8"	£2.82
100 146	8	1/2"	£3.77
100 147	10	1/8"	£3.28
100 148	10	1/4"	£3.30
100 149	10	3/8"	£3.49
100 150	10	1/2"	£3.84
100 151	12	1/4"	£3.84
100 152	12	3/8"	£3.96
100 153	12	1/2"	£4.15
100 154	16	3/8"	£8.49
100 155	16	1/2"	£8.69

Branch Swivel Tee - Mini Fittings



	Tube (mm)	Thread (BSP)	Price
100 156	4	M5	£1.98
100 157	4	1/8"	£2.12
100 158	6	M5	£1.98
100 159	6	1/8"	£2.12

Branch Swivel Tee - Parallel Thread



	Tube (mm)	Thread (BSP)	Price
100 160	4	1/8"	£2.12
100 161	4	1/4"	£2.04
100 162	6	1/8"	£2.30
100 163	6	1/4"	£2.36
100 164	6	3/8"	£2.77
100 165	8	1/8"	£2.52
100 166	8	1/4"	£2.62
100 167	8	3/8"	£2.82
100 168	8	1/2"	£3.77
100 169	10	1/8"	£3.28
100 170	10	1/4"	£3.30
100 171	10	3/8"	£3.49
100 172	10	1/2"	£3.84
100 173	12	1/4"	£3.80
100 174	12	3/8"	£3.96
100 175	12	1/2"	£4.15
100 176	16	3/8"	£8.22
100 177	16	1/2"	£8.54

Run Swivel Tee - Parallel Thread



	Tube (mm)	Thread (BSP)	Price
100 178	4	1/8"	£2.12
100 179	4	1/4"	£2.22
100 180	6	1/8"	£2.30
100 181	6	1/4"	£2.35
100 182	6	3/8"	£2.77
100 183	8	1/8"	£2.52
100 184	8	1/4"	£2.62
100 185	8	3/8"	£2.82
100 186	8	1/2"	£3.77
100 187	10	1/8"	£3.28
100 188	10	1/4"	£3.28
100 189	10	3/8"	£3.49
100 190	10	1/2"	£3.84
100 191	12	1/4"	£3.76
100 192	12	3/8"	£3.96
100 193	12	1/2"	£4.15

Run Swivel Tee - Mini Fittings



	Tube (mm)	Thread (BSP)	Price
100 194	4	M5	£1.98
100 195	4	1/8"	£2.12
100 196	6	M5	£1.98
100 197	6	1/8"	£2.12

Run Swivel Tee - Tapered Thread



	Tube (mm)	Thread (BSP)	Price
100 198	4	M5	£2.28
100 199	4	1/8"	£2.12
100 200	4	1/4"	£2.22
100 201	6	M5	£2.50
100 202	6	1/8"	£2.30
100 203	6	1/4"	£2.34
100 204	6	3/8"	£2.77
100 205	8	1/8"	£2.56
100 206	8	1/4"	£2.66
100 207	8	3/8"	£2.82
100 208	8	1/2"	£3.77
100 209	10	1/8"	£3.28
100 210	10	1/4"	£3.30
100 211	10	3/8"	£3.49
100 212	10	1/2"	£3.84
100 213	12	1/4"	£3.81
100 214	12	3/8"	£3.96
100 215	12	1/2"	£4.15

Male Y - Tapered Thread



	Tube (mm)	Thread (BSP)	Price
100 216	4	M5	£2.38
100 217	4	1/8"	£2.13
100 218	4	1/4"	£2.22
100 219	6	M5	£3.16
100 220	6	1/8"	£2.30
100 221	6	1/4"	£2.40
100 222	6	3/8"	£2.78
100 223	8	1/8"	£2.57
100 224	8	1/4"	£2.66
100 225	8	3/8"	£2.82
100 226	8	1/2"	£3.44
100 227	10	1/8"	£3.29
100 228	10	1/4"	£3.30
100 229	10	3/8"	£3.49
100 230	10	1/2"	£3.84
100 231	12	1/4"	£3.80
100 232	12	3/8"	£3.94
100 233	12	1/2"	£4.15

Equal Elbow



	Tube (mm)	Price
100 234	4	£1.04
100 235	6	£1.10
100 236	8	£1.20
100 237	10	£1.67
100 238	12	£1.95
100 239	16	£3.89

Equal Elbow - Mini Fittings



	Tube (mm)	Price
100 240	4	£1.87
100 241	6	£2.04

Equal Tee



	Tube (mm)	Price
100 242	4	£1.38
100 243	6	£1.42
100 244	8	£1.62
100 245	10	£1.82
100 246	12	£2.60
100 247	16	£5.98

Equal Tee - Mini Fittings



	Tube (mm)	Price
100 248	4	£2.22
100 249	6	£2.30

Equal Cross



	Tube (mm)	Price
100 250	4	£2.39
100 251	6	£2.80
100 252	8	£2.86
100 253	10	£3.28
100 254	12	£3.49

"Y" Fitting



	Tube (mm)	Price
100 255	4	£1.98
100 256	6	£2.08
100 257	8	£2.16
100 258	10	£2.55
100 259	12	£3.41

Reducing "Y" Fitting



	Tube (mm)	Tube (mm)	Price
100 260	6	4	£2.12
100 261	8	6	£2.17
100 262	10	8	£2.55
100 263	12	10	£3.43

Stem "Y" Reducer



	Tube (mm)	Tube (mm)	Price
100 264	6	4	£2.52
100 265	8	6	£2.80
100 266	10	8	£3.28
100 267	12	10	£3.91

Equal Stem "Y"



	Tube (mm)	Price
100 268	4	£2.43
100 269	6	£2.51
100 270	8	£2.76
100 271	10	£3.33
100 272	12	£3.94

Multiple Tee



	Tube (mm)	Tube (mm)	Price
100 273	6	4	£2.70
100 274	8	4	£3.08
100 275	8	6	£3.81
100 276	10	6	£4.23
100 277	10	8	£4.45

Straight Connector



	Tube (mm)	Price
100 278	4	£1.12
100 279	6	£1.14
100 280	8	£1.24
100 281	10	£1.55
100 282	12	£1.87
100 283	16	£3.56

Straight Connector - Mini Fittings



	Tube (mm)	Price
100 284	4	£1.90
100 285	6	£2.15

Reducing Connector



	Tube (mm)	Tube (mm)	Price
100 286	6	4	£1.50
100 287	8	6	£1.64
100 288	10	8	£2.14
100 289	12	10	£2.36

Bulkhead Fittings



	Tube (mm)	Price
100 290	4	£2.70
100 291	6	£2.80
100 292	8	£3.02
100 293	10	£4.28
100 294	12	£4.98

Female Bulkhead - Parallel Thread



	Tube (mm)	Thread (BSP)	Price
100 295	4	1/8"	£2.77
100 296	6	1/8"	£2.90
100 297	6	1/4"	£2.98
100 298	8	1/8"	£3.40
100 299	8	1/4"	£3.52
100 300	8	3/8"	£3.65
100 301	10	1/4"	£4.88
100 302	10	3/8"	£5.20
100 303	12	1/4"	£5.44
100 304	12	3/8"	£5.83
100 305	12	1/2"	£6.32

Stem Reducer



	Tube (mm)	Tube (mm)	Price
100 306	6	4	£1.52
100 307	8	4	£1.50
100 308	8	6	£1.65
100 309	10	8	£2.11
100 310	12	10	£2.25

Stem Elbow



	Tube (mm)	Price
100 311	4	£1.51
100 312	6	£1.70
100 313	8	£1.90
100 314	10	£2.22
100 315	12	£2.60

Stem Elbow Reducer



	Tube (mm)	Tube (mm)	Price
100 316	6	4	£1.74
100 317	8	6	£1.95
100 318	10	8	£2.22
100 319	12	10	£2.64

Blanking Plug



	Tube (mm)	Price
100 320	4	£0.43
100 321	6	£0.45
100 322	8	£0.50
100 323	10	£0.58
100 324	12	£0.66

Tube Blanking Cap



	Tube (mm)	Price
100 325	4	£0.68
100 326	6	£0.78
100 327	8	£0.92
100 328	10	£1.04
100 329	12	£1.16

Flow Control Valves (in-line)



	Tube (mm)	Price
100 330	4	£3.71
100 331	6	£5.26
100 332	8	£6.04
100 333	10	£7.60
100 334	12	£8.77

**Banjo Flow Control Valves (for cylinders)
- Taper Thread**



	Tube (mm)	Thread (BSP)	Price
100 335	4	1/8"	£3.78
100 336	4	1/4"	£4.91
100 337	6	1/8"	£3.81
100 338	6	1/4"	£4.98
100 339	6	3/8"	£7.84
100 340	8	1/8"	£3.86
100 341	8	1/4"	£5.04
100 342	8	3/8"	£7.90
100 343	8	1/2"	£8.93
100 344	10	1/4"	£5.29
100 345	10	3/8"	£8.15
100 346	10	1/2"	£9.36
100 347	12	3/8"	£8.27
100 348	12	1/2"	£9.56

**Banjo Flow Control Valves (for valves)
- Taper Thread**



	Tube (mm)	Thread (BSP)	Price
100 349	4	1/8"	£3.78
100 350	4	1/4"	£4.91
100 351	6	1/8"	£3.81
100 352	6	1/4"	£4.98
100 353	6	3/8"	£7.84
100 354	8	1/8"	£3.86
100 355	8	1/4"	£5.04
100 356	8	3/8"	£7.90
100 357	8	1/2"	£8.93
100 358	10	1/4"	£5.29
100 359	10	3/8"	£8.15
100 360	10	1/2"	£9.36
100 361	12	3/8"	£8.27
100 362	12	1/2"	£9.56

**Banjo Flow Control Valves (for cylinders)
- Parallel Thread**



	Tube (mm)	Thread (BSP)	Price
100 363	4	M5	£4.04
100 364	4	1/8"	£4.32
100 365	6	M5	£4.04
100 366	6	1/8"	£4.35
100 367	6	1/4"	£5.83
100 368	6	3/8"	£7.86
100 369	8	1/8"	£4.41
100 370	8	1/4"	£5.88
100 371	8	3/8"	£8.28
100 372	8	1/2"	£9.91
100 373	10	1/4"	£6.13
100 374	10	3/8"	£6.13
100 375	10	1/2"	£9.36
100 376	12	3/8"	£8.81
101 376	12	1/2"	£9.56

**Banjo Flow Control Valves (for valves)
- Parallel Thread**



	Tube (mm)	Thread (BSP)	Price
100 376	4	M5	£4.04
100 377	4	1/8"	£4.32
100 378	6	M5	£4.04
100 379	6	1/8"	£4.35
100 380	6	1/4"	£5.83
100 381	6	3/8"	£7.86
100 382	8	1/8"	£4.41
100 383	8	1/4"	£5.88
100 384	8	3/8"	£8.28
100 385	8	1/2"	£9.91
100 386	10	1/4"	£6.13
100 387	10	3/8"	£6.13
100 388	10	1/2"	£9.36
100 389	12	3/8"	£8.81
100 390	12	1/2"	£9.56

Non Return Valves (tube to tube)



	Tube (mm)	Price
100 391	4	£8.22
100 392	6	£9.22
100 393	8	£11.29
100 394	10	£15.93
100 395	12	£18.65

3/2 On/Off Valve (tube to tube)



	Tube (mm)	Price
100 396	6	£8.36
100 397	8	£9.04
100 398	10	£9.74
100 399	12	£10.44

Metal Fittings

Pressure range 0-16 Bar

Vacuum -1 bar

Male Stud - Taper Thread



	Tube (mm)	Thread (BSP)	Price
100 400	4	1/8"	£1.35
100 401	4	1/4"	£1.57
100 402	6	1/8"	£1.32
100 403	6	1/4"	£1.57
100 404	6	3/8"	£2.48
100 405	6	1/2"	£3.38
100 406	8	1/8"	£1.78
100 407	8	1/4"	£1.78
100 408	8	3/8"	£2.16
100 409	8	1/2"	£3.54
100 410	10	1/8"	£2.42
100 411	10	1/4"	£2.58
100 412	10	3/8"	£2.84
100 413	10	1/2"	£3.77
100 414	12	1/4"	£2.93
100 415	12	3/8"	£3.36
100 416	12	1/2"	£4.13
100 417	14	3/8"	£4.13
100 418	14	1/2"	£4.13

Male Stud - Parallel Thread



	Tube (mm)	Thread (BSP)	Price
100 419	3	M3	£2.42
100 420	3	M5	£2.32
100 421	4	M5	£1.51
100 422	4	M6	£1.51
100 423	4	M7	£1.60
100 424	4	M8	£2.42
100 425	5	M5	£1.51
100 426	5	1/8"	£1.51
100 427	6	M5	£1.51
100 428	6	1/8"	£1.51
100 429	6	1/4"	£1.62
100 430	6	3/8"	£2.44
100 431	8	1/8"	£1.72
100 432	8	1/4"	£1.86
100 433	8	3/8"	£2.44
100 434	10	1/4"	£2.84
100 435	10	3/8"	£3.25
100 436	10	1/2"	£3.44
100 437	12	1/4"	£3.14
100 438	12	3/8"	£3.14
100 439	12	1/2"	£3.92
100 440	14	3/8"	£4.52
100 441	14	1/2"	£4.52

Female straight - Parallel Thread



100 800	4	M5	£1.30
100 801	4	1/8"	£1.30
100 802	4	1/4"	£1.48
100 803	5	M5	£1.30
100 804	5	1/8"	£1.40
100 805	5	1/4"	£1.58
100 806	6	1/8"	£1.26
100 807	6	1/4"	£1.58
100 808	8	1/8"	£1.48
100 809	8	1/4"	£1.72
100 810	10	1/4"	£2.08
100 811	10	3/8"	£2.25

Metal Fittings

Swivel Elbow - Taper Thread



	Tube (mm)	Thread (BSP)	Price
100 442	4	1/8"	£2.16
100 443	4	1/4"	£2.42
100 444	6	1/8"	£2.66
100 445	6	1/4"	£2.98
100 446	6	3/8"	£3.80
100 447	6	1/2"	£5.09
100 448	8	1/8"	£3.22
100 449	8	1/4"	£3.49
100 450	8	3/8"	£4.03
100 451	8	1/2"	£5.18
100 452	10	1/8"	£4.29
100 453	10	1/4"	£4.55
100 454	10	3/8"	£4.90
100 455	10	1/2"	£5.31
100 456	12	1/4"	£5.08
100 457	14	3/8"	£5.51
100 458	14	1/2"	£5.92

Swivel Elbow - Parallel Thread



	Tube (mm)	Thread (BSP)	Price
100 459	4	M5	£2.98
100 460	4	M6	£2.98
100 461	4	M7	£3.32
100 462	4	1/8"	£2.42
100 463	4	1/4"	£2.68
100 464	6	M5	£2.62
100 465	6	1/8"	£2.76
100 466	6	1/4"	£3.11
100 467	8	1/8"	£3.16
100 468	8	1/4"	£3.42
100 469	10	1/8"	£4.55
100 470	10	1/4"	£4.81
100 471	12	1/4"	£5.30
100 472	12	3/8"	£5.76
100 473	12	1/2"	£6.24
100 474	14	3/8"	£6.24
100 475	14	1/2"	£6.24

Swivel Tee - Taper Thread



	Tube (mm)	Thread (BSP)	Price
101 475	4	1/8"	£2.82
100 476	4	1/4"	£3.19
100 477	6	1/8"	£3.34
100 478	6	1/4"	£3.60
100 479	6	3/8"	£4.35
100 480	6	1/2"	£5.80
100 481	8	1/8"	£4.01
100 482	8	1/4"	£4.51
100 483	8	3/8"	£4.99
100 484	8	1/2"	£6.12
100 485	10	1/8"	£5.31
100 486	10	1/4"	£5.70
100 487	10	3/8"	£6.03
100 488	10	1/2"	£6.35
100 489	12	1/4"	£6.40
100 490	12	3/8"	£7.03
100 491	12	1/2"	£7.45

Metal Fittings

Swivel Tee - Parallel Thread



	Tube (mm)	Thread (BSP)	Price
100 492	4	1/8"	£3.09
100 493	4	1/4"	£3.45
100 494	6	1/8"	£3.35
100 495	6	1/4"	£3.87
100 496	8	1/8"	£4.22
100 497	8	1/4"	£4.81
100 498	8	3/8"	£5.31
100 499	8	1/2"	£6.61
100 500	10	1/8"	£5.57
100 501	10	1/4"	£6.03
100 502	12	1/4"	£6.80
100 503	12	3/8"	£7.29
100 504	12	1/2"	£7.87
100 505	12	1/2"	£7.87

Bulkhead Connector



	Tube (mm)	Price
100 506	4	£3.19
100 507	6	£3.58
100 508	8	£4.16
100 509	10	£5.77
100 510	12	£6.45
100 511	14	£8.56

Straight Connector



	Tube (mm)	Price
100 512	4	£1.90
100 513	6	£2.28
100 514	8	£2.64
100 515	10	£3.77
100 516	12	£4.10
100 517	14	£6.98

Equal Tee



	Tube (mm)	Price
100 518	4	£2.78
100 519	6	£3.42
100 520	8	£4.12
100 521	10	£5.67
100 522	12	£6.75
100 523	14	£7.76

Equal Elbow



	Tube (mm)	Price
100 524	4	£2.42
100 525	6	£2.82
100 526	8	£3.15
100 527	10	£4.81
100 528	12	£5.16
100 529	14	£7.66

Rotary Elbow Female



	Tube (mm)	Thread (BSP)	Price
100 820	4	1/8"	£2.45
100 821	4	1/4"	£2.64
100 822	6	1/8"	£2.45
100 823	6	1/4"	£2.53
100 824	8	1/8"	£2.59
100 825	8	1/4"	£2.59

Extended Swivel Elbow



	Tube (mm)	Thread (BSP)	Price
100 826	4	M5	£2.72
100 827	4	1/8	£2.72
100 828	4	1/4	£3.40
100 829	6	M5	£2.82
100 830	6	1/8	£2.80
100 831	6	1/4	£3.14
100 832	8	1/8	£3.06
100 833	8	1/4	£3.55
100 834	8	3/8	£4.65
100 835	10	1/4	£4.89
100 836	10	3/8	£5.89

Swivel Female Tee



	Tube (mm)	Thread (BSP)	Price
100 837	4	1/8	£3.55
100 838	4	1/4	£4.15
100 839	6	1/8	£3.48
100 840	6	1/4	£3.48
100 841	8	1/8	£3.95
100 842	8	1/4	£3.98

Swivel Run Tee



	Tube (mm)	Thread (BSP)	Price
100 843	4	M5	£3.28
100 844	4	1/8	£2.89
100 845	4	1/4	£3.78
100 846	6	1/8	£2.96
100 847	6	1/4	£3.16
100 848	8	1/8	£3.54
100 849	8	1/4	£3.66
100 850	8	3/8	£4.17
100 851	10	1/4	£4.88
100 852	10	3/8	£5.15
100 853	12	1/4	£6.56
100 854	12	3/8	£6.56

Bulkhead Push in Elbow



	Tube (mm)	Thread (BSP)	Price
100 855	4		£4.41
100 856	6		£4.82
100 857	8		£5.55
100 858	10		£6.58

Female bulkhead push in



	Tube (mm)	Thread (BSP)	Price
100 860	4	1/8	£2.89
100 861	6	1/8	£3.09
100 862	6	1/4	£3.32
100 863	8	1/8	£3.47
100 864	8	1/4	£3.56

Stem Adaptor Parallel



	Tube (mm)	Thread (BSP)	Price
100 865	4	M5	£0.59
100 866	4	M7	£0.92
100 867	4	1/8	£0.59
100 868	4	1/4	£0.88
100 869	5	M5	£0.88
100 870	5	1/8	£0.88
100 871	5	1/4	£1.11
100 872	6	M5	£0.82
100 873	6	M7	£1.01
100 874	6	1/8	£0.68
100 875	6	1/4	£0.81
100 876	8	1/8	£0.68
100 877	8	1/4	£0.88
100 878	8	3/8	£1.04
100 879	10	1/8	£1.16
100 880	10	1/4	£1.16
100 881	10	3/8	£1.26
100 882	12	1/4	£1.18
100 883	12	3/8	£2.22
100 884	12	1/2	£1.84
100 885	14	3/8	£1.84
100 886	14	1/2	£1.98

Extended Stem Adaptor Parallel



	Tube (mm)	Thread (BSP)	Price
100 887	4	M5	£1.49
100 888	4	1/8	£1.27
100 889	6	M7	£1.49
100 890	6	1/8	£1.15
100 891	6	1/4	£1.32
100 892	8	1/8	£1.24
100 893	8	1/4	£1.44
100 894	10	1/4	£1.51

Single Banjo Ring



	Tube (mm)	Thread (BSP)	Price
100 895	4	M5	£1.59
100 896	4	M6	£1.68
100 897	4	1/8	£1.78
100 898	5	M5	£1.78
100 899	5	1/8	£1.86
100 900	6	M5	£1.68
100 901	6	1/8	£1.70
100 902	6	1/4	£1.96
100 903	8	1/8	£1.88
100 904	8	1/4	£1.98
100 905	8	3/8	£2.45
100 906	10	1/4	£2.45
100 907	10	3/8	£2.66
100 908	12	3/8	£3.12

Double Banjo Ring



	Tube (mm)	Thread (BSP)	Price
100 909	4	M5	£3.58
100 910	4	1/8	£3.62
100 911	5	M5	£3.58
100 912	5	1/8	£3.78
100 913	6	1/8	£3.48
100 914	6	1/4	£3.48
100 915	8	1/8	£3.62
100 916	8	1/4	£3.58

Single Banjo Bolt



	Tube (mm)	Thread (BSP)	Price
100 917		M5	£0.62
100 918		M6	£1.04
100 919		1/8	£0.81
100 920		1/4	£1.23
100 921		3/8	£2.26
100 922		1/2	£3.85

Double Banjo Bolt



	Tube (mm)	Thread (BSP)	Price
100 923		1/8	£1.49
100 924		1/4	£1.98
100 925		3/8	£3.54
100 926		1/2	£5.92

Push in Reducer



Tube

Stem

	Tube (mm)	Stem	Price
100 927	4	5	£1.33
100 928	4	6	£1.19
100 929	5	6	£1.69
100 930	4	8	£1.22
100 931	5	8	£1.76
100 932	6	8	£1.24
100 933	6	10	£1.34
100 934	8	10	£1.35
100 935	4	12	£1.78
100 936	6	12	£1.78
100 937	8	12	£1.80
100 938	10	12	£1.88
100 939	4	14	£2.92
100 940	6	14	£2.35
100 941	8	14	£2.18
100 942	10	14	£2.49
100 943	12	14	£2.64

Push in Plug



	Tube (mm)	Thread (BSP)	Price
100 944	4		£0.51
100 945	5		£0.77
100 946	6		£0.51
100 947	8		£0.67
100 948	10		£0.81
100 949	12		£0.98
100 950	14		£1.26

Push in Increaser



	Tube (mm)	Stem	Price
100 951	6	4	£1.51
100 952	8	6	£1.98

Stem Elbow



	Tube (mm)	Stem	Price
100 953	4	4	£2.34
100 954	6	6	£2.34
100 955	8	8	£3.49
100 956	10	10	£4.88
100 957	12	12	£5.91
100 958	6	4	£2.48
100 959	8	6	£3.48

Extended Stem Elbow



	Tube (mm)	Stem	Price
100 960	4	4	£2.98
100 961	6	6	£2.98
100 962	8	8	£4.13
100 963	6	4	£2.98
100 964	8	6	£4.15

Stainless Steel Fittings

Stainless Steel Male Stud - Taper Thread



	Tube (mm)	Thread (BSP)	Price
100 530	4	1/8"	£9.90
100 531	6	1/8"	£10.66
100 532	6	1/4"	£11.34
100 533	8	1/8"	£13.10
100 534	8	1/4"	£13.10
100 535	10	1/4"	£14.80
100 536	10	3/8"	£15.55
100 537	12	3/8"	£20.23
100 538	12	1/2"	£21.17

Stainless Steel Male Stud - Parallel Thread



	Tube (mm)	Thread (BSP)	Price
100 539	4	M5	£9.90
100 540	4	1/8"	£10.58
100 541	6	M5	£10.51
100 542	6	1/8"	£11.41
100 543	6	1/4"	£12.85
100 544	8	1/8"	£13.10
100 545	8	1/4"	£13.79
100 546	10	1/4"	£15.30
100 547	10	3/8"	£18.65
100 548	12	3/8"	£21.60
100 549	12	1/2"	£23.94

Stainless Steel Swivel Elbow - Taper Thread



	Tube (mm)	Thread (BSP)	Price
100 550	4	1/8"	£22.18
100 551	6	1/8"	£22.50
100 552	6	1/4"	£23.36
100 553	8	1/8"	£27.40
100 554	8	1/4"	£28.15
100 555	10	1/4"	£36.36
100 556	10	3/8"	£37.30
100 557	12	3/8"	£46.44
100 558	12	1/2"	£44.72

Stainless Steel Fittings

Stainless Steel Swivel Elbow - Parallel Thread



	Tube (mm)	Thread (BSP)	Price
100 559	4	M5	£22.18
100 560	4	1/8"	£22.75
100 561	6	M5	£22.50
100 562	6	1/8"	£23.36
100 563	6	1/4"	£24.26
100 564	8	1/8"	£28.15
100 565	8	1/4"	£29.16
100 566	10	1/4"	£36.47
100 567	10	3/8"	£38.12
100 568	12	3/8"	£48.06
100 569	12	1/2"	£44.34

Stainless Steel Swivel Tee - Taper Thread



	Tube (mm)	Thread (BSP)	Price
100 570	4	1/8"	£32.26
100 571	6	1/8"	£33.26
100 572	6	1/4"	£34.09
100 573	8	1/8"	£38.99
100 574	8	1/4"	£39.74
100 575	10	1/4"	£52.99
100 576	10	3/8"	£53.10
100 577	12	3/8"	£68.29
100 578	12	1/2"	£71.57

Stainless Steel Swivel Tee - Parallel Thread



	Tube (mm)	Thread (BSP)	Price
100 579	4	M5	£32.26
100 580	4	1/8"	£32.51
100 581	6	M5	£33.26
100 582	6	1/8"	£33.77
100 583	6	1/4"	£34.78
100 584	8	1/8"	£39.38
100 585	8	1/4"	£40.39
100 586	10	1/4"	£52.74
100 587	10	3/8"	£54.43
100 588	12	3/8"	£69.62
100 589	12	1/2"	£72.83

Stainless Steel Straight Connector



	Tube (mm)	Price
100 590	4	£14.87
100 591	6	£17.71
100 592	8	£20.74
100 593	10	£25.02
100 594	12	£32.58

Stainless Steel Fittings

Stainless Steel Equal Elbow



	Tube (mm)	Price
100 595	4	£21.67
100 596	6	£22.86
100 597	8	£28.48
100 598	10	£36.54
100 599	12	£41.99

Stainless Steel Equal Tee



	Tube (mm)	Price
100 600	4	£32.51
100 601	6	£34.34
100 602	8	£40.82
100 603	10	£53.93
100 604	12	£57.78

Stainless Steel Bulkhead



	Tube (mm)	Price
100 605	4	£20.09
100 606	6	£22.61
100 607	8	£26.39
100 608	10	£32.83
100 609	12	£42.41

Airline Adaptors

Technical Data: Pipe Fittings

Pressure Rating: 60 bar

Parallel Nipple



	Male Thread (BSP)	Male Thread (BSP)	Price
100 610	M5	M5	£0.28
100 611	1/8"	M5	£0.52
100 612	1/8"	1/8"	£0.61
100 613	1/8"	1/4"	£0.88
100 614	1/8"	3/8"	£1.25
100 615	1/4"	1/4"	£0.92
100 616	1/4"	3/8"	£1.16
100 617	1/4"	1/2"	£1.98
100 618	3/8"	3/8"	£1.30
100 619	3/8"	1/2"	£1.98
100 620	3/4"	3/8"	£4.92
100 621	1/2"	1/2"	£2.00
100 622	1/2"	3/4"	£4.56
100 623	3/4"	3/4"	£4.95

Taper Nipple



	Male Thread (BSP)	Male Thread (BSP)	Price
100 624	1/8"	1/8"	£0.62
100 625	1/8"	1/4"	£0.86
100 626	1/8"	3/8"	£1.19
100 627	1/8"	1/2"	£2.66
100 628	1/4"	1/4"	£0.89
100 629	1/4"	3/8"	£1.24
100 630	1/4"	1/2"	£2.29
100 631	3/8"	3/8"	£1.30
100 632	3/8"	1/2"	£2.29
100 633	1/2"	1/2"	£2.20
100 634	1/2"	3/4"	£4.06
100 635	3/4"	3/4"	£4.28
100 636	3/4"	1"	£5.01
100 637	1"	1"	£5.28

Female Adaptor/Reducer



		Female Thread (BSP)	Price
100 638		M5	£0.42
100 639		1/8"	£0.66
100 640		1/4"	£1.02
100 641		3/8"	£2.11
100 642		1/2"	£3.39
100 643		3/4"	£3.42
100 910	1/8"	M5	£1.21
100 911	1/8"	1/4"	£1.30
100 912	1/4"	3/8"	£1.65
100 913	3/8"	1/2"	£2.82
100 914	1/2"	3/4"	£4.21
100 915	3/4"	1"	£5.98

3 Piece Taper Adaptors



	Thread (BSPT)	Price
100 990	1/8	£1.32
100 991	1/4	£1.76
100 992	3/8	£2.64
100 993	1/2	£3.68
100 994	3/4	£6.98
100 995	1	£14.58

Airline Adaptors

Taper Reducer



	Male Thread (BSP)	Female Thread (BSP)	Price
100 644	1/4"	1/8"	£0.64
100 645	3/8"	1/8"	£0.99
100 646	1/2"	1/8"	£1.90
100 647	3/8"	1/4"	£0.79
100 648	1/2"	1/4"	£1.65
100 649	1/2"	3/8"	£1.65
100 650	3/4"	1/4"	£5.66
100 651	3/4"	1/2"	£3.44
100 652	3/4"	3/8"	£4.03
100 653	1"	1/2"	£5.12
100 654	1"	3/4"	£5.46

Parallel Reducer



	Male Thread (BSP)	Female Thread (BSP)	Price
100 655	1/8"	M5	£0.49
100 656	1/4"	1/8"	£0.77
100 657	3/8"	1/8"	£1.05
100 658	3/8"	1/4"	£0.81
100 659	1/2"	1/8"	£1.88
100 660	1/2"	1/4"	£1.88
100 661	1/2"	3/8"	£1.88
100 662	3/4"	1/4"	£4.43
100 663	3/4"	1/2"	£3.16
100 664	3/4"	3/8"	£3.54

Male Plug With O Ring Seal



	Thread (BSP)	Price
100 665	M5	£0.58
100 666	1/8"	£0.44
100 667	1/4"	£0.48
100 668	3/8"	£0.68
100 669	1/2"	£1.06
100 670	3/4"	£11.07
100 671	1"	£13.46

Female Elbow



	Thread (BSP)	Price
100 672	1/8"	£1.60
100 673	1/4"	£1.86
100 674	3/8"	£2.32
100 675	1/2"	£3.92
100 676	3/4"	£6.24
100 677	1"	£9.98

Female Bulkhead



	Thread (BSP)	Price
100 790	M10x1	£2.98
100 791	M16x1.5	£2.88
100 792	M20x1.5	£3.34
100 793	M26x1.5	£4.54
100 794	M28x1.5	£6.62
100 795	M34x1.5	£11.52
100 796	M42x1.5	£18.98

Airline Adaptors

Male - Female Elbow



	Thread (BSP)	Price
100 678	M5	£1.62
100 679	1/8"	£1.40
100 680	1/4"	£1.78
100 681	3/8"	£2.58
100 682	1/2"	£4.11
100 683	3/4"	£6.22
100 684	1"	£8.84

Male - Male Elbow



	Thread (BSP)	Price
100 781	M5	£1.52
100 782	1/8"	£1.21
100 783	1/4"	£1.49
100 784	3/8"	£1.98
100 785	1/2"	£3.24
100 786	3/4"	£5.88
100 787	1"	£7.92

Female Tee



	Thread (BSP)	Price
100 685	1/8"	£1.98
100 686	1/4"	£2.34
100 687	3/8"	£3.88
100 688	1/2"	£5.98
100 689	3/4"	£9.98
100 690	1"	£14.82

Centre Male Tee



	Thread (BSP)	Price
100 691	1/8"	£1.84
100 692	1/4"	£2.18
100 693	3/8"	£3.85
100 694	1/2"	£6.12
100 695	3/4"	£9.98
100 696	1"	£14.82

Off Set Male Tee



	Thread (BSP)	Price
100 697	1/8"	£1.98
100 698	1/4"	£2.22
100 699	3/8"	£3.78
100 700	1/2"	£6.05
100 701	3/4"	£10.95
100 702	1"	£14.98

Female Cross



	Thread (BSP)	Price
100 703	1/8"	£2.81
100 704	1/4"	£4.80
100 705	3/8"	£5.32
100 706	1/2"	£6.64

Male/Male/Female Tee



	Thread (BSP)	Price
100 797	1/8"	£1.98
100 798	1/4"	£2.52
100 799	3/8"	£3.48
100 800	1/2"	£4.96

Male/Male/Male Tee



	Thread (BSP)	Price
100 801	1/8"	£1.22
100 802	1/4"	£1.60
100 803	3/8"	£2.12
100 804	1/2"	£2.92

Female/Male/Male Tee



	Thread (BSP)	Price
100 805	1/8"	£1.22
100 806	1/4"	£1.60
100 807	3/8"	£2.42
100 808	1/2"	£3.98

Male/Female Equal Cross



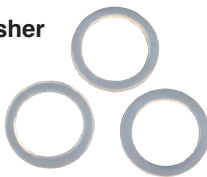
	Thread (BSP)	Price
100 708	1/8"	£1.98
100 709	1/4"	£2.52
100 710	3/8"	£3.48
100 711	1/2"	£4.96

Extension Long M/Female bspp



	Thread (BSP)	Price
100 712	1/8 bspp Male x 1/8 bspp Female extension length 16mm	£1.14
100 713	1/8 bspp Male x 1/8 bspp Female extension length 36mm	£1.22
100 714	1/4 bspp Male x 1/4 bspp Female extension length 27mm	£1.34
100 715	1/4 bspp Male x 1/4 bspp Female extension length 43mm	£1.54

Nylon Washer



	Thread (BSP)	Price
100 716	M5	£0.10
100 717	1/8	£0.19
100 718	1/4	£0.21
100 719	3/8	£0.26
100 720	1/2	£0.38
100 721	3/4	£0.81

Male/ Female Tapered Increasers



	Thread (BSP)	Price
100 722	1/8 bspt male x 1/8 bsp female	£0.56
100 723	1/8 bspt male x 1/4 bsp female	£0.68
100 724	1/8 bspt male x 3/8 bsp female	£1.12
100 725	1/4 bspt male x 1/4 bsp female	£0.68
100 726	1/4 bspt male x 3/8 bsp female	£1.12
100 727	1/4 bspt male x 1/2 bsp female	£1.71
100 728	3/8 bspt male x 3/8 bsp female	£1.19
100 729	3/8 bspt male x 1/2 bsp female	£1.83

Male BSPT Hosetail Adaptors Male BSPP Hosetail Adaptors



30402	6-1/8 bspt Hosetail	£0.56
30403	6-1/4 bspt Hosetail	£0.72
30404	7-1/8 bspt Hosetail	£0.56
30405	7-1/4 bspt Hosetail	£0.72
30406	8-1/8 bspt Hosetail	£0.58
30407	8-1/4 bspt Hosetail	£0.74
30408	9-1/8 bspt Hosetail	£0.58
30409	9-1/4 bspt Hosetail	£0.74
30410	9-3/8 bspt Hosetail	£0.92
30411	9-1/2 bspt Hosetail	£1.34
30412	10-1/8 bspt Hosetail	£0.59
30413	10-1/4 bspt Hosetail	£0.82
30414	10-3/8 bspt Hosetail	£0.92
30415	10-1/2 bspt Hosetail	£1.42
30416	12-1/4 bspt Hosetail	£0.80
30417	12-3/8 bspt Hosetail	£0.99
30418	12-1/2 bspt Hosetail	£1.48
30419	14-3/8 bspt Hosetail	£1.06
30420	14-1/2 bspt Hosetail	£1.62
30421	16-3/8 bspt Hosetail	£1.16
30422	16-1/2 bspt Hosetail	£1.62
30423	17-3/8 bspt Hosetail	£1.28
30424	17-1/2 bspt Hosetail	£1.81
30425	18-3/8 bspt Hosetail	£1.62
30426	18-1/2 bspt Hosetail	£1.92
30427	20-3/8 bspt Hosetail	£1.98
30428	20-1/2 bspt Hosetail	£1.98



30429	4-M5 bspp Hosetail	£1.40
30430	6-1/8 bspp Hosetail	£2.12
30431	6-1/4 bspp Hosetail	£1.04
30432	7-1/8 bspp Hosetail	£2.12
30433	7-1/4 bspp Hosetail	£2.12
30434	8-1/8 bspp Hosetail	£2.12
30435	8-1/4 bspp Hosetail	£1.04
30436	8-3/8 bspp Hosetail	£2.88
30437	9-1/8 bspp Hosetail	£2.23
30438	9-1/4 bspp Hosetail	£1.04
30439	9-3/8 bspp Hosetail	£1.28
30440	10-1/8 bspp Hosetail	£2.23
30441	10-1/4 bspp Hosetail	£2.23
30442	10-3/8 bspp Hosetail	£2.23
30443	12-1/4 bspp Hosetail	£1.16
30444	12-3/8 bspp Hosetail	£1.78
30445	12-1/2 bspp Hosetail	£2.23
30446	14-3/8 bspp Hosetail	£1.78
30447	14-1/2 bspp Hosetail	£2.23
30448	17-3/8 bspp Hosetail	£3.56
30449	17-1/2 bspp Hosetail	£4.34
30450	18-3/4 bspp Hosetail	£4.34
30451	20-1/2 bspp Hosetail	£4.34
30452	20-3/4 bspp Hosetail	£4.34

Elbow BSPT Hosetail Adaptors



	I/D HOSE	Thread (BSPT)	Price
30453	6mm	1/8"	£1.04
30454	6mm	1/4"	£1.04
30455	7mm	1/8"	£1.04
30456	7mm	1/4"	£1.12

Exhaust Silencers

Brass Silencer



	Thread (BSP)	Price
200 101	M5	£1.32
200 102	1/8"	£1.41
200 103	1/4"	£1.84
200 104	3/8"	£3.64
200 105	1/2"	£4.46
200 106	3/4"	£8.93
200 107	1"	£14.40

Brass Silencer



	Thread (BSP)	Price
200 108	M5	£0.58
200 109	1/8"	£0.58
200 110	1/4"	£0.96
200 111	3/8"	£1.44
200 112	1/2"	£2.15
200 113	3/4"	£3.46
200 114	1"	£11.98

Steel Wool Silencer



	Thread (BSP)	Price
200 115	M5	£1.26
200 116	1/8"	£1.27
200 117	1/4"	£1.72
200 118	3/8"	£2.69
200 119	1/2"	£3.85
200 120	3/4"	£7.43
200 121	1"	£12.40

Plastic Silencer



	Thread (BSP)	Price
200 122	1/8"	£1.31
200 123	1/4"	£1.58
200 124	3/8"	£3.29
200 125	1/2"	£3.29
200 126	3/4"	£12.22
200 127	1"	£12.56

Exhaust Flow Control Valve



	Thread (BSP)	Price
200 128	1/8"	£3.53
200 129	1/4"	£3.78
200 130	3/8"	£6.55
200 131	1/2"	£6.66
200 132	3/4"	£19.22
200 133	1"	£24.44

Brass Silencer



	Thread (BSP)	Price
200 134	M5	£1.22
200 135	1/8"	£0.80
200 136	1/4"	£1.20
200 137	3/8"	£2.48
200 138	1/2"	£3.30
200 139	3/4"	£6.19
200 140	1"	£15.45

Brass Ball Valves



Female/Female

200 400	Mini Ball Valve	10 bar	1/8"	£3.52
200 401	Mini Ball Valve	10 bar	1/4"	£3.52
200 402	Mini Ball Valve	10 bar	3/8"	£4.42
200 403	Min Ball Valve	10 bar	1/2"	£4.80



Male/Female

200 404	Mini Ball Valve	10 bar	1/8"	£3.52
200 405	Mini Ball Valve	10 bar	1/4"	£3.52
200 406	Min Ball Valve	10 bar	3/8"	£4.42
200 407	Mini Ball Valve	10 bar	1/2"	£4.80



Female/Female

200 408	Lever Handle	50 bar	1/4"	£4.74
200 409	Lever Handle	50 bar	3/8"	£4.98
200 410	Lever Handle	50 bar	1/2"	£5.98
200 411	Lever Handle	40 bar	3/4"	£7.34
200 412	Lever Handle	30 bar	1"	£10.88
200 413	Lever Handle	30 bar	1 1/4"	£18.91
200 414	Lever Handle	30 bar	1 1/2"	£25.98
200 415	Lever Handle	25 bar	2"	£38.85



Male/Female

200 416	Lever Handle	bspt m/female	1/4"	£5.12
200 417	Lever Handle	bspt m/female	3/8"	£5.12
200 418	Lever Handle	bspt m/female	1/2"	£8.98
200 419	Lever Handle	bspt m/female	3/4"	£11.78
200 420	Lever Handle	bspt m/female	1"	£16.82
200 421	Lever Handle	bspt m/female	1 1/4"	£19.78
200 422	Lever Handle	bspt m/female	1 1/2"	£28.96
200 423	Lever Handle	bspt m/female	2"	£42.45

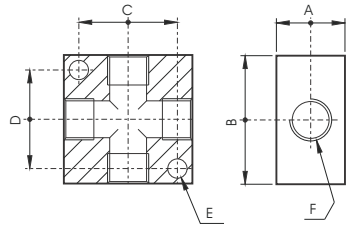


Female/Female

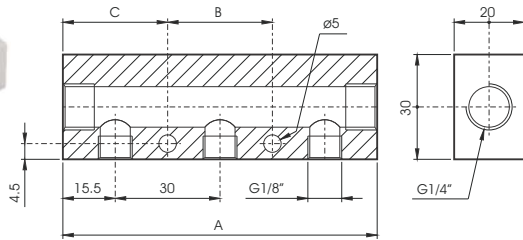
200 424	Lockable Exhausting Ball Valve	10 bar	1/4"	£9.68
200 425	Lockable Exhausting Ball Valve	10 bar	3/8"	£11.18
200 426	Lockable Exhausting Ball Valve	10 bar	1/2"	£12.96
200 427	Lockable Exhausting Ball Valve	10 bar	3/4"	£14.98
200 428	Lockable Exhausting Ball Valve	10 bar	1"	£23.46

Distribution Manifolds

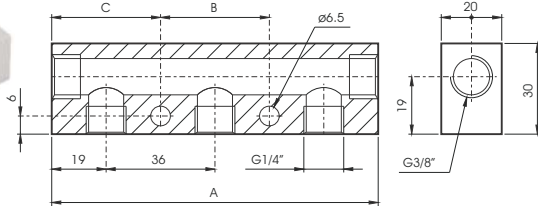
Female Cross



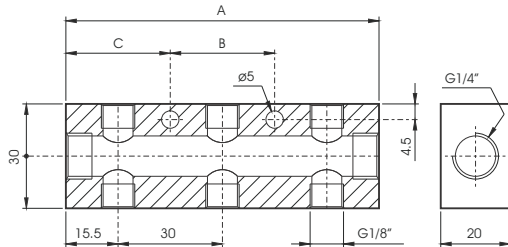
CODE	F	A	B	C	D	E	Price
RC40304502	1/8	16	30	23	22	4,5	£2.44
RC40304503	1/4	20	40	30	27	5,5	£3.22
RC40304504	3/8	25	50	38	39	6,5	£5.28
RC40304505	1/2	25	50	38	39	6,5	£6.15



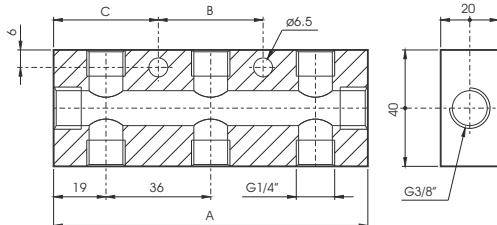
CODE	N°	A	B	C	Price
Single Sided 1/4 inlet 1/8 outlet					
RC40302407	2	61	50	5,5	£9.16
RC40302507	3	91	30	30,5	£11.28
RC40302607	4	121	60	30,5	£12.18
RC40302707	5	151	90	30,5	£14.11
RC40302807	6	181	120	30,5	£15.12



CODE	N°	A	B	C	Price
Single Sided 3/8 inlet 1/4 outlet					
RC40302417	2	74	61	6,5	£10.88
RC40302517	3	110	36	37	£11.28
RC40302617	4	146	72	37	£14.12
RC40302717	5	182	108	37	£16.15
RC40302817	6	218	144	37	£18.11



CODE	N°	A	B	C	Price
Double Sided 1/4 inlet 1/8 outlet					
RC40302907	2	61	50	5,5	£10.12
RC40303007	3	91	30	30,5	£11.88
RC40303107	4	121	60	30,5	£14.98
RC40303207	5	151	90	30,5	£18.21



CODE	N°	A	B	C	Price
Double Sided 3/8 inlet 1/4 outlet					
RC40302917	2	74	61	6,5	£10.12
RC40303017	3	110	36	37	£13.88
RC40303117	4	146	72	37	£17.92
RC40303217	5	182	108	37	£21.04
RC40303317	6	218	144	37	£25.11

Other sizes are available made to order

Universal Couplings fit all series plugs
 1300 l/min flow rate 0-10 bar air
 Mini Couplings 600 l/min 0-10 bar



200 502 1/4 bsp Universal Coupling £9.98
 200 503 3/8 bsp Universal Coupling £9.98
 200 504 1/2 bsp Universal Coupling £9.98



200 505 1/8 bspf Universal Coupling £9.98
 200 506 1/4 bspf Universal Coupling £9.98
 200 507 3/8 bspf Universal Coupling £9.98
 200 508 1/2 bspf Universal Coupling £9.98



200 509 6mm Universal Coupling £10.04
 200 510 8mm Universal Coupling £10.04
 200 511 10mm Universal Coupling £10.04
 200 512 12mm Universal Coupling £10.04



200 513 1/8 Italian series plug £2.24
 200 514 1/4 Italian series plug £2.24
 200 515 3/8 Italian series plug £3.32
 200 516 1/2 Italian series plug £4.12



200 517 1/8 fem Italian series plug £2.24
 200 518 1/4 fem Italian series plug £2.24
 200 519 3/8 fem Italian series plug £3.32
 200 520 1/2 fem Italian series plug £4.12



200 521 6/4 spring Italian series £3.84
 200 522 8/6 spring Italian series £3.98
 200 523 10/8 spring Italian series £4.98
 200 524 12/10 spring Italian series £5.56



200 525 1/8 German series plug £2.24
 200 526 1/4 German series plug £2.24
 200 527 3/8 German series plug £3.32
 200 528 1/2 German series plug £4.12



200 529 1/8 fem German series plug £2.24
 200 530 1/4 fem German series plug £2.24
 200 531 3/8 fem German series plug £3.32
 200 532 1/2 fem German series plug £4.12



200 533 8/6 spring German series £3.84
 200 534 10/8 spring German series £4.98



200 535 1/8 fem mini coupling £6.64
 200 536 1/4 fem mini coupling £6.64



200 537 1/8 bsp mini coupling £6.64
 200 538 1/4 bsp mini coupling £6.64

200 539 1/8 bsp mini plug £1.52
 200 540 1/4 bsp mini plug £1.52



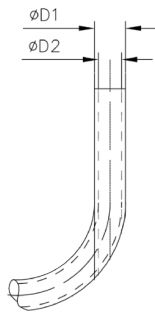
200 541 1/8 fem mini plug £1.52
 200 542 1/4 fem mini plug £1.52

200 543 6/4 spring mini plug £2.98
 200 544 8/6 spring mini plug £3.84



Nylon Tubing PA11

PA11



R Diameter of curve (23°C)
 PU Standard pressure (23°C)
 PS Burst pressure (23°C)

	D1	D2	R	PU	PS	Mt	Price
PA11 4x2,5	4,0	2,5	20mm	31bar	92bar	30	£10.64
PA11 4x2,7	4,0	2,7	25mm	23bar	68bar	30	£13.84
PA11 5x3	5,0	3,0	30mm	33bar	100bar	30	£15.59
PA11 6x4	6,0	4,0	35mm	27bar	80bar	30	£18.64
PA11 8x6	8,0	6,0	40mm	19bar	57bar	30	£25.51
PA11 10x7	10,0	7,0	45mm	24bar	71bar	30	£36.19
PA11 10x8	10,0	8,0	60mm	15bar	44bar	30	£34.15
PA11 12x10	12,0	10,0	85mm	12bar	36bar	30	£49.58
PA11 14x12	14,0	12,0	85mm	10bar	31bar	30	£69.51
PA11 15x12,5	15,0	12,5	100mm	12bar	36bar	30	£82.15

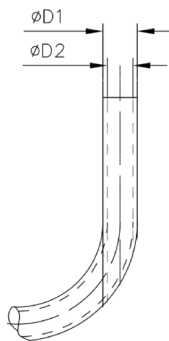
colours B-Black, G-Green, BL Blue, Y-Yellow, N-Natural, R-Red

Nylon Tubing 100mtr Coils

Nylon PA11- 4 x 2.5 x 100	£32.98
Nylon PA11- 6 x 4 x 100	£56.66
Nylon PA11- 8 x 6 x 100	£76.82
Nylon PA11-10x 8 x 100	£102.20
Nylon PA11-12x10x 100	£160.12

Polyurethane Tubing

TPU-25



R Diameter of curve (23°C)
 PU working pressure (23°C)
 PS Burst pressure (23°C)

Part Number	D1	D2	R	PU	PS	Mt	Price
TPU-25 4x2	4,0	2,0	15mm	22bar	67bar	25	£8.89
TPU-25 4x2,5	4,0	2,5	10mm	15bar	46bar	25	£5.56
TPU-25 6x4	6,0	4,0	20mm	13bar	40bar	25	£10.90
TPU-25 8x5,5	8,0	5,5	35mm	14bar	41bar	25	£16.82
TPU-25 10x7,5	10,0	7,5	30mm	10bar	29bar	25	£21.56
TPU-25 12x9	12,0	9,0	45mm	10bar	29bar	25	£31.86

PU Tubing

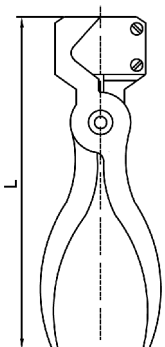
colours B-Black, G-Green, BL Blue, Y-Yellow, N-Natural, R-Red

Polyurethane Tubing 100mtr Coils

Polyurethane TPU- 4x2.5 x100	£18.94
Polyurethane TPU- 5 x 3 x 100	£31.88
Polyurethane TPU- 6 x 4 x 100	£41.66
Polyurethane TPU- 8 x 5 x 100	£66.82
Polyurethane TPU-10x 7 x 100	£96.20
Polyurethane TPU-12x 9 x 100	£120.12



200 201 Plastic Tube Cutter £5.89
 200 202 Spare Blades £3.02



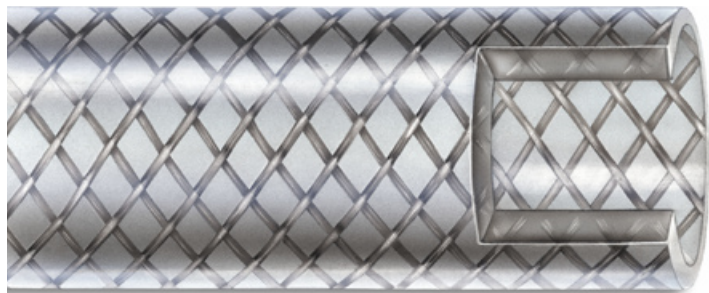
200 203 Metal Tube Cutter-12mm £19.89
 200 204 Metal Tube Cutter-25mm £22.36
 200 205 Metal Spare Blades 12mm £5.88
 200 206 Metal Spare Blades 25mm £8.12



200 207 Tube Clips Rows of 10 4mm £2.89
 200 208 Tube Clips Rows of 10 6mm £3.98
 200 209 Tube Clips Rows of 10 8mm £5.01
 200 210 Tube Clips Rows of 10 10mm £6.88
 200 211 Tube Clips Rows of 8 12mm £7.86

AIR & Water PVC Braided Hose

30mtr Coils Clear



200 960	10mm	x 5mm	20 ba	£28.52
200 961	11.5mm	x 6.3mm	16 bar	£16.52
200 962	13.5mm	x 8mm	16 bar	£22.02
200 963	16mm	x 10mm	15 bar	£24.91
200 964	18.5mm	x12.5mm	12 bar	£28.84
200 965	23mm	x 16mm	10 bar	£46.10
200 966	26mm	x 20mm	10 bar	£54.88
200 967	33mm	x 25mm	10 bar	£70.86
200 968	41mm	x 31.5mm	6 bar	£118.02
200 969	49mm	x 40mm	6 bar	£138.19
200 970	62mm	x 50mm	3 bar	£198.56

Also Available in 100mtrs coils and in different colours

AIR & Water Hose Reels

17 bar Working Pressure, Auto Re-Wind



200 950	3/8 I/D	x 1/4 bspt	x 10mtrs working length	£118.12
200 951	3/8 I/D	x 3/8 bspt	x 15mtrs working length	£160.11
200 952	1/2 I/D	x 3/8 bspt	x 20mtrs working length	£189.56
200 953	1/2 I/D	x 1/2 bspt	x 20mtrs working length	£192.18



200 971 Water Gun 1/2 bsp female inlet 24 bar max pressure £56.72



200 972 Water Gun with 6 spray settings 3/4 bsp female £22.73

Air Service Units

Filters



201 001	Filter 20 micron	semi-auto	15 bar	1/8"	800l/min	£18.54
201 002	Filter 20 micron	semi-auto	15 bar	1/4"	800l/min	£18.54
201 003	Filter 20 micron	semi-auto	15 bar	1/4"	1900l/min	£24.93
201 004	Filter 20 micron	semi-auto	15 bar	3/8"	1900l/min	£24.93
201 005	Filter 20 micron	semi-auto	15 bar	3/8"	3750l/min	£33.70
201 006	Filter 20 micron	semi-auto	15 bar	1/2"	3750l/min	£33.70
201 007	Filter 20 micron	automatic	15 bar	1/2"	3750l/min	£80.40
201 008	Filter 20 micron	semi-auto	15 bar	3/4"	6250l/min	£46.60
201 009	Filter 20 micron	semi-auto	15 bar	1"	6250l/min	£46.60
201 010	Filter 20 micron	automatic	15 bar	1"	6250l/min	£93.18



Regulators

Regulator range available in 0-2 bar, 0-4 bar, 0-8 bar and 0-12 bar

201 011	Regulator 0-8 bar	600 l/min	1/8"	£18.54
201 012	Regulator 0-8 bar	600 l/min	1/4"	£18.54
201 013	Regulator 0-8 bar	2050 l/min	1/4"	£28.80
201 014	Regulator 0-8 bar	2050 l/min	3/8"	£28.80
201 015	Regulator 0-8 bar	3200l/min	3/8"	£38.40
201 016	Regulator 0-8bar	3200l/min	1/2"	£38.40
201 017	Regulator 0-8 bar	6200l/min	3/4"	£52.78
201 018	Regulator 0-8 bar	6200l/min	1"	£52.78



Lubricators

201 019	Lubricator	700 l/min	1/8"	£23.68
201 020	Lubricator	700 l/min	1/4"	£23.68
201 021	Lubricator	2600 l/min	1/4"	£28.56
201 022	Lubricator	2600 l/min	3/8"	£28.56
201 023	Lubricator	5600 l/min	3/8"	£38.90
201 024	Lubricator	5600 l/min	1/2"	£38.90
201 025	Lubricator	8200 l/min	3/4"	£49.92
201 026	Lubricator	8200 l/min	1"	£54.12



Filter Regulators

201 027	Filter/Reg	600 l/min	1/8"	£28.54
201 028	Filter/Reg	600 l/min	1/4"	£28.54
201 029	Filter/Reg	1650 l/min	1/4"	£39.92
201 030	Filter/Reg	1650 l/min	3/8"	£39.92
201 031	Filter/Reg	3000 l/min	1/2"	£58.19
201 032	Filter/Rega	3000 l/min	1/2"	£98.56
201 033	Filter/Reg	4500 l/min	3/4"	£72.10
201 034	Filter/Reg	4500 l/min	1"	£72.10
201 035	Filter/Rega	4500 l/min	1"	£114.10

Coalescing Filters



201 040	Filter 0.01 micron	450 l/min	1/8"	£52.80
201 041	Filter 0.01 micron	450 l/min	1/4"	£52.80
201 042	Filter 0.01 micron	600 l/min	1/4"	£68.54
201 043	Filter 0.01 micron	600 l/min	3/8"	£68.54
201 044	Filter 0.01 micron	660 l/min	3/8"	£82.12
201 045	Filter 0.01 micron	660 l/min	1/2"	£82.12
201 046	Filter 0.01 micron	910 l/min	3/4"	£98.56
201 047	Filter 0.01 micron	910 l/min	1"	£98.56

Filter/reg + Lubricators



201 058	Filter/reg+lub	semi-auto	15 bar	1/8"	600l/min	£48.88
201 059	Filter/reg+lub	semi-auto	15 bar	1/4"	800l/min	£48.88
201 060	Filter/reg+lub	semi-auto	15 bar	1/4"	1100l/min	£62.54
201 061	Filter/reg+lub	semi-auto	15 bar	3/8"	1100l/min	£62.54
201 062	Filter/reg+lub	semi-auto	15 bar	3/8"	2500l/min	£88.96
201 063	Filter/reg+lub	semi-auto	15 bar	1/2"	2500l/min	£88.96
201 064	Filter/reg+lub	automatic	15 bar	1/2"	2500l/min	£132.78
201 065	Filter/reg+lub	semi-auto	15 bar	3/4"	4300l/min	£108.78
201 066	Filter/reg+lub	semi-auto	15 bar	1"	4300l/min	£108.78
201 067	Filter/reg+lub	automatic	15 bar	1"	4300l/min	£154.80

Filter+Reg+Lubricators



201 068	F+R+L	semi-auto	450 l/min	1/8"	£52.56
201 069	F+R+L	semi-auto	450 l/min	1/4"	£52.56
201 070	F+R+L	semi-auto	1000 l/min	1/4"	£68.90
201 071	F+R+L	semi-auto	1000 l/min	3/8"	£68.90
201 072	F+R+L	semi-auto	2400 l/min	3/8"	£96.40
201 073	F+R+L	semi-auto	2400 l/min	1/2"	£96.40
201 074	F+R+L	semi-auto	4250 l/min	3/4"	£124.34
201 075	F+R+L	semi-auto	4250 l/min	1"	£124.34

3/2 Shut Off Valve Manual/ Pilot Op.



201 076	Manual Shut Off Valve	1850 l/min	1/4"	£54.81
201 077	Manual Shut Off Valve	1850 l/min	3/8"	£54.81
201 078	Manual Shut Off Valve	3000 l/min	3/8"	£61.55
201 079	Manual Shut Off Valve	3000 l/min	1/2"	£61.55
201 080	Manual Shut Off Valve	5200 l/min	3/4"	£66.86
201 081	Manual Shut Off Valve	5200 l/min	1"	£66.86
201 082	Pilot Operated Valve	1850 l/min	3/8"	£80.90
201 083	Pilot Operated Valve	3000 l/min	1/2"	£86.52
201 084	Pilot Operated Valve	5200 l/min	1"	£98.96

3/2 Solenoid Shut Off Valve



201 085	Electrical Shut Off Valve	1850 l/min	3/8"	£96.84
201 086	Electrical Shut Off Valve	3000 l/min	1/2"	£106.72
201 087	Electrical Shut Off Valve	5200 l/min	1"	£132.34

Please state coil voltage and add £8.89 per coil

Air Service Units

Operating Pressure 0.3 to 16 Bar

Flow Rates 850 to 4600 l/min

1/4 bsp to 1" bsp Range

Other sizes and ranges available

Please contact the sales office for more information

1/4" Flow Rate of 1450 l/min

3/8" Flow Rate of 3000 l/min

1/2" Flow Rate of 3800 l/min

3/4" Flow Rate of 6000 l/min



- 200 101 Regulator 1/4 £34.18
- 200 102 Regulator 3/8 £51.10
- 200 103 Regulator 1/2 £51.10
- 200 104 Regulator 3/4 £51.10
- 200 105 Regulator 1" £98.15



- 200 106 Filter 1/4 £28.54
- 200 107 Filter 3/8 £44.92
- 200 108 Filter 1/2 £44.92
- 200 109 Filter 3/4 £44.92
- 200 110 Filter 1" £69.62



- 200 111 Filter/Regulator 1/4 £49.88
- 200 112 Filter/Regulator 3/8 £72.39
- 200 113 Filter/Regulator 1/2 £74.89
- 200 114 Filter/Regulator 3/4 £74.89
- 200 115 Filter/Regulator 1" £115.86



- 200 116 Lubricator 1/4 £39.45
- 200 117 Lubricator 3/8 £48.82
- 200 118 Lubricator 1/2 £48.82
- 200 119 Lubricator 3/4 £48.82
- 200 120 Lubricator 1" £82.85



- 200 121 Filter/reg/lub 1/4 £107.18
- 200 122 Filter/reg/lub 3/8 £144.88
- 200 123 Filter/reg/lub 1/2 £144.88
- 200 124 Filter/reg/lub 3/4 £144.88
- 200 125 Filter/reg/lub 1" £212.56



- 200 126 3/2 Lockable Isolation Valve 1/4 £71.18
- 200 127 3/2 Lockable Isolation Valve 3/8 £78.19
- 200 128 3/2 Lockable Isolation Valve 1/2 £78.19
- 200 129 3/2 Lockable Isolation Valve 3/4 £84.22
- 200 130 3/2 Lockable Isolation Valve 1" £92.56



- 200 131 3/2 Solenoid Valve 1/4 £134.82
- 200 132 3/2 Solenoid Valve 3/8 £134.82
- 200 133 3/2 Solenoid Valve 1/2 £134.82
- 200 134 3/2 Solenoid Valve 3/4 £134.82
- 200 135 3/2 Solenoid Valve 1" £134.82



- 200 136 Soft Start Valve 1/4 £28.92
- 200 137 Soft Start Valve 3/8 £76.14
- 200 138 Soft Start Valve 1/2 £76.14
- 200 139 Soft Start Valve 3/4 £76.14
- 200 140 Soft Start Valve 1" £91.18



- 200 141 1/4 Mounting Bracket £2.88
- 200 142 3/8 Mounting Bracket £2.88
- 200 143 1/2 Mounting Bracket £3.48
- 200 144 3/4 Mounting Bracket £3.89
- 200 145 1" Mounting Bracket £4.44
- 200 146 50mm Gauge 0-10 bar, 1/8 £5.89
- 200 147 50mm Gauge 0-7 bar, 1/8 £5.89
- 200 148 63mm Gauge 0-10 bar, 1/8 £7.58
- 200 149 63mm Gauge 0-7 bar, 1/8 £7.58



- 200 150 Distributor Block 1/4 £28.92
- 200 151 Distributor Block 3/8 £28.92
- 200 152 Distributor Block 1/2 £41.12
- 200 153 Distributor Block 3/4 £41.12
- 200 154 Distributor Block 1" £41.12



200 155 FRL +Shut Off Valve 1/4 £172.55
 200 156 FRL +Shut Off Valve 3/8 £204.12
 200 157 FRL +Shut Off Valve 1/2 £204.12
 200 158 FRL +Shut Off Valve 3/4 £212.48
 200 159 FRL +Shut Off Valve 1" £212.48



200 160 FIL/REG/LUB 1/4 £120.11
 200 161 FIL/REG/LUB 3/8 £162.12
 200 162 FIL/REG/LUB 1/2 £162.12
 200 163 FIL/REG/LUB 3/4 £208.16
 200 164 FIL/REG/LUB 1" £208.16



200 165 FR+Shut Off Valve 1/4 £134.80
 200 166 FR+Shut Off Valve 3/8 £154.12
 200 167 FR+Shut Off Valve 1/2 £159.54
 200 168 FR+Shut Off Valve 3/4 £159.54
 200 169 FR+Shut Off Valve 1" £214.58



200 170 FR+Sol+Soft Start Valve 1/4 £206.18
 200 171 FR+Sol+Soft Start Valve 3/8 £206.11
 200 172 FR+Sol+Soft Start Valve 1/2 £206.26
 200 173 FR+Sol+Soft Start Valve 3/4 £216.48
 200 174 FR+Sol+Soft Start Valve 1" £272.17



200 175 SH+FR+Sol+Soft start 1/4 £334.15
 200 176 SH+FR+Sol+Soft start 3/8 £344.15
 200 177 SH+FR+Sol+Soft start 1/2 £344.15
 200 178 SH+FR+Sol+Soft start 3/4 £392.11
 200 179 SH+FR+Sol+Soft start 1" £392.11



200 180 SH+FR+Sol+PSD 1/4 £298.18
 200 181 SH+FR+Sol+PSD 3/8 £298.18
 200 182 SH+FR+Sol+PSD 1/2 £298.18
 200 183 SH+FR+Sol+PSD 3/4 £401.54
 200 184 SH+FR+Sol+PSD 1" £405.11



200 185 SH+FR+LUB+Sol+PSD 1/4 £349.78
 200 186 SH+FR+LUB+Sol+PSD 3/8 £349.78
 200 187 SH+FR+LUB+Sol+PSD 1/2 £349.78
 200 188 SH+FR+LUB+Sol+PSD 3/4 £449.14
 200 189 SH+FR+LUB+Sol+PSD 1" £449.14



200 190 FR+LUB+Sol+Soft Start 1/4 £251.72
 200 191 FR+LUB+Sol+Soft Start 3/8 £251.72
 200 192 FR+LUB+Sol+Soft Start 1/2 £251.72
 200 193 FR+LUB+Sol+Soft Start 3/4 £254.19
 200 194 FR+LUB+Sol+Soft Start 1" £316.54



200 195 Coalescing Filters 1/4 £148.24
 200 196 Coalescing Filters 3/8 £148.24
 200 197 Coalescing Filters 1/2 £148.24
 200 198 Coalescing Filters 3/4 £192.78
 200 199 Coalescing Filters 1" £215.92

All Assembled units come complete with gauges and mounting brackets.

Other Combinations and filtration grades are available, 25 and 5 micron as standard.

Prices quoted are for semi-automatic drains, fully automatic types are available, please contact the sales office.



ISO 15552 VDMA 24562 32mm To 200mm Bore

Aluminium Barrel, Magnetic, Stainless Steel Rod

300 101	32 x 25	Stroke	£66.02	300 115	40 x 25	Stroke	£75.88	300 129	50 x 25	Stroke	£95.10
300 102	32 x 50	Stroke	£66.78	300 116	40 x 50	Stroke	£77.89	300 130	50 x 50	Stroke	£96.12
300 103	32 x 75	Stroke	£67.54	300 117	40 x 75	Stroke	£79.12	300 131	50 x 75	Stroke	£99.10
300 104	32 x 80	Stroke	£68.18	300 118	40 x 80	Stroke	£80.82	300 132	50 x 80	Stroke	£99.51
300 105	32 x 100	Stroke	£70.12	300 119	40 x 100	Stroke	£82.41	300 133	50 x 100	Stroke	£102.02
300 106	32 x 125	Stroke	£70.82	300 120	40 x 125	Stroke	£82.56	300 134	50 x 125	Stroke	£104.98
300 107	32 x 150	Stroke	£73.04	300 121	40 x 150	Stroke	£85.94	300 135	50 x 150	Stroke	£106.58
300 108	32 x 160	Stroke	£73.89	300 122	40 x 160	Stroke	£86.96	300 136	50 x 160	Stroke	£108.16
300 109	32 x 200	Stroke	£76.10	300 123	40 x 200	Stroke	£90.12	300 137	50 x 200	Stroke	£112.92
300 110	32 x 250	Stroke	£79.16	300 124	40 x 250	Stroke	£94.16	300 138	50 x 250	Stroke	£118.82
300 111	32 x 300	Stroke	£82.15	300 125	40 x 300	Stroke	£98.12	300 139	50 x 300	Stroke	£144.12
300 112	32 x 320	Stroke	£84.19	300 126	40 x 320	Stroke	£99.98	300 140	50 x 320	Stroke	£150.88
300 113	32 x 400	Stroke	£88.10	300 127	40 x 400	Stroke	£106.14	300 141	50 x 400	Stroke	£135.98
300 114	32 x 500	Stroke	£94.56	300 128	40 x 500	Stroke	£118.10	300 142	50 x 500	Stroke	£145.52
300 143	63 x 25	Stroke	£112.04	300 157	80 x 25	Stroke	£154.12	300 171	100 x 25	Stroke	£192.45
300 144	63 x 50	Stroke	£115.05	300 158	80 x 50	Stroke	£157.88	300 172	100 x 50	Stroke	£197.15
300 145	63 x 75	Stroke	£118.12	300 159	80 x 75	Stroke	£162.78	300 173	100 x 75	Stroke	£202.11
300 146	63 x 80	Stroke	£119.14	300 160	80 x 80	Stroke	£163.22	300 174	100 x 80	Stroke	£204.12
300 147	63 x 100	Stroke	£122.04	300 161	80 x 100	Stroke	£166.74	300 175	100 x 100	Stroke	£208.16
300 148	63 x 125	Stroke	£124.98	300 162	80 x 125	Stroke	£171.12	300 176	100 x 125	Stroke	£213.36
300 149	63 x 150	Stroke	£129.18	300 163	80 x 150	Stroke	£175.16	300 177	100 x 150	Stroke	£218.06
300 150	63 x 160	Stroke	£130.52	300 164	80 x 160	Stroke	£177.56	300 178	100 x 160	Stroke	£220.14
300 151	63 x 200	Stroke	£134.55	300 165	80 x 200	Stroke	£184.13	300 179	100 x 200	Stroke	£228.15
300 152	63 x 250	Stroke	£141.11	300 166	80 x 250	Stroke	£192.55	300 180	100 x 250	Stroke	£240.11
300 153	63 x 300	Stroke	£144.88	300 167	80 x 300	Stroke	£200.56	300 181	100 x 300	Stroke	£248.32
300 154	63 x 320	Stroke	£150.14	300 168	80 x 320	Stroke	£204.55	300 182	100 x 320	Stroke	£253.12
300 155	63 x 400	Stroke	£163.88	300 169	80 x 400	Stroke	£218.89	300 183	100 x 400	Stroke	£274.04
300 156	63 x 500	Stroke	£169.12	300 170	80 x 500	Stroke	£236.81	300 184	100 x 500	Stroke	£276.98

Other bore sizes and strokes available, please contact Pneutek for more information.

Other types of cylinders are available, please see options below.



Cylinder Guide Units



Cylinder Lock Units



Rotary Cylinders



Tie Rod Cylinders



Rodless Cylinders



Compact Cylinders



Hydrocheck Units



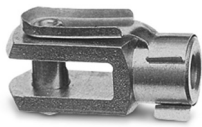
Twin Rod Cylinders



Compact Mini Cylinders

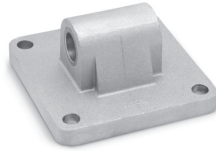
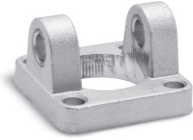


Compact Guide Cylinders



205 300 Fork Rod End 32 bore £1.49
 205 301 Fork Rod End 40 bore £2.22
 205 302 Fork Rod End 50 bore £4.54
 206 302 Fork Rod End 63 bore £4.54
 206 303 Fork Rod End 80 bore £8.10
 206 303 Fork Rod End 100 bore £8.10

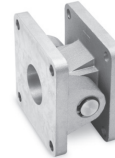
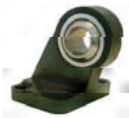
205 280 Swivel Rod Eye 32 bore £7.12
 205 281 Swivel Rod Eye 40 bore £8.15
 205 282 Swivel Rod Eye 50 bore £16.32
 205 282 Swivel Rod Eye 63 bore £16.32
 205 283 Swivel Rod Eye 80 bore £25.52
 205 283 Swivel Rod Eye 100 bore £25.52



224 051 Clevis MP2 32 bore £4.88
 224 052 Clevis MP2 40 bore £5.43
 224 053 Clevis MP2 50 bore £6.42
 224 054 Clevis MP2 63 bore £7.59
 224 055 Clevis MP2 80 bore £10.44
 224 056 Clevis MP2 100 bore £14.34

205 911 Clevis MP4 32 bore £5.38
 205 912 Clevis MP4 40 bore £5.90
 205 913 Clevis MP4 50 bore £6.94
 205 914 Clevis MP4 63 bore £8.54
 205 915 Clevis MP4 80 bore £10.97
 205 916 Clevis MP4 100 bore £14.77

224 057 Pin 32 bore £0.88
 224 058 Pin 40 bore £1.03
 224 059 Pin 50 bore £1.10
 224 060 Pin 63 bore £1.51
 224 061 Pin 80 bore £1.60
 224 062 Pin 100 bore £2.09



205 941 Pivot with bearing 32 bore £33.30
 205 942 Pivot with bearing 40 bore £34.92
 205 943 Pivot with bearing 50 bore £46.48
 205 944 Pivot with bearing 63 bore £49.41
 205 945 Pivot with bearing 80 bore £61.06
 205 946 Pivot with bearing 100 bore £108.56

Combination block 32 bore £12.64
 Combination block 40 bore £13.86
 Combination block 50 bore £15.96
 Combination block 63 bore £19.14
 Combination block 80 bore £24.51
 Combination block 100 bore £32.70

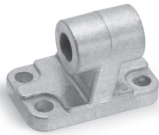


224 063 Self Aligning Rod Joint 32 bore £15.63
 224 064 Self Aligning Rod Joint 40 bore £23.48
 224 065 Self Aligning Rod Joint 50/63 bore £33.58
 224 066 Self Aligning Rod Joint 80/100 bore £45.61

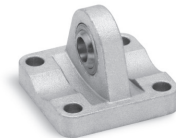
See next page for more brackets



- 205 871 Feet Mounts 32 bore £2.48
- 205 872 Feet Mounts 40 bore £2.82
- 205 873 Feet Mounts 50 bore £3.32
- 205 874 Feet Mounts 63 bore £3.96
- 205 875 Feet Mounts 80 bore £4.60
- 205 876 Feet Mounts 100 bore £7.36



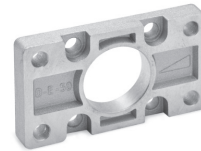
- 205 881 Pivot Bracket 32 bore £5.20
- 205 882 Pivot Bracket 40 bore £7.12
- 205 883 Pivot Bracket 50 bore £7.78
- 205 884 Pivot Bracket 63 bore £11.34
- 205 885 Pivot Bracket 80 bore £11.78
- 205 886 Pivot Bracket 100 bore £18.24



- 205 961 Rear Swivel Eye Bracket 32 bore £12.25
- 205 962 Rear Swivel Eye Bracket 40 bore £12.72
- 205 963 Rear Swivel Eye Bracket 50 bore £13.98
- 205 964 Rear Swivel Eye Bracket 63 bore £18.46
- 205 965 Rear Swivel Eye Bracket 80 bore £22.00
- 205 966 Rear Swivel Eye Bracket 100 bore £39.64



- 212 211 GA Clevis 32 bore £5.54
- 212 212 GA Clevis 40 bore £6.24
- 212 213 GA Clevis 50 bore £7.16
- 212 214 GA Clevis 63 bore £8.80
- 212 215 GA Clevis 80 bore £10.66
- 212 216 GA Clevis 100 bore £14.86



- 205 861 MF1/MF2 32 bore £4.78
- 205 862 MF1/MF2 40 bore £5.42
- 205 863 MF1/MF2 50 bore £6.46
- 205 864 MF1/MF2 63 bore £7.64
- 205 865 MF1/MF2 80 bore £12.98
- 205 866 MF1/MF2 100 bore £14.38



- 213 351 Centre Trunnion 32 bore £32.49
- 213 352 Centre Trunnion 40 bore £40.54
- 213 353 Centre Trunnion 50 bore £46.74
- 213 354 Centre Trunnion 63 bore £61.92
- 213 355 Centre Trunnion 80 bore £69.55
- 213 356 Centre Trunnion 100 bore £90.22



- 205 951 Pivot MT4 32 bore £15.38
- 205 952 Pivot MT4 40 bore £16.05
- 205 953 Pivot MT4 50 bore £16.05
- 205 954 Pivot MT4 63 bore £18.28
- 205 955 Pivot MT4 80 bore £18.28
- 205 956 Pivot MT4 100 bore £20.12



Mini ISO Cylinders 6432

Magnetic as standard, Single and Double Acting
Fixed Cushioning or with Adjustable Cushioning

Single Acting Spring In Version (Air to Push rod out)

300 269	8mm bore x 10mm stroke s/act	£30.12
300 270	8mm bore x 25mm stroke s/act	£31.56
300 271	8mm bore x 50mm stroke s/act	£32.55
300 272	10mm bore x 10mm stroke s/act	£30.12
300 273	10mm bore x 25mm stroke s/act	£31.56
300 274	10mm bore x 50mm stroke s/act	£32.55
300 275	12mm bore x 10mm stroke s/act	£33.85
300 276	12mm bore x 25mm stroke s/act	£35.12
300 277	12mm bore x 50mm stroke s/act	£36.97
300 278	16mm bore x 10mm stroke s/act	£35.76
300 279	16mm bore x 25mm stroke s/act	£36.77
300 280	16mm bore x 50mm stroke s/act	£38.92
300 281	20mm bore x 10mm stroke s/act	£37.34
300 282	20mm bore x 25mm stroke s/act	£38.89
300 283	20mm bore x 50mm stroke s/act	£39.98
300 284	25mm bore x 10mm stroke s/act	£41.73
300 285	25mm bore x 25mm stroke s/act	£42.91
300 285	25mm bore x 50mm stroke s/act	£44.05

Single Acting Sprung Out Version (Air to Push rod in)

300 286	16mm bore x 10mm stroke s/act	£44.56
300 287	16mm bore x 25mm stroke s/act	£45.88
300 288	16mm bore x 50mm stroke s/act	£47.19
300 289	20mm bore x 10mm stroke s/act	£47.78
300 290	20mm bore x 25mm stroke s/act	£49.12
300 291	20mm bore x 50mm stroke s/act	£50.88
300 292	25mm bore x 10mm stroke s/act	£51.11
300 293	25mm bore x 25mm stroke s/act	£53.06
300 294	25mm bore x 50mm stroke s/act	£55.81



Standard Double Acting Cylinders with fixed cushioning

300 295	8mm bore x 10mm stroke	£30.86
300 296	8mm bore x 25mm stroke	£31.11
300 297	8mm bore x 40mm stroke	£32.54
300 298	8mm bore x 50mm stroke	£33.52
300 299	8mm bore x 80mm stroke	£34.10
300 300	8mm bore x 100mm stroke	£34.87
300 301	8mm bore x 125mm stroke	£36.81
300 302	10mm bore x 10mm stroke	£30.86
300 303	10mm bore x 25mm stroke	£31.11
300 304	10mm bore x 40mm stroke	£32.54
300 305	10mm bore x 50mm stroke	£33.52
300 306	10mm bore x 80mm stroke	£34.10
300 307	10mm bore x 100mm stroke	£34.87
300 308	10mm bore x 125mm stroke	£36.81
300 309	12mm bore x 10mm stroke	£34.54
300 310	12mm bore x 25mm stroke	£35.15
300 311	12mm bore x 40mm stroke	£36.19
300 312	12mm bore x 50mm stroke	£36.71
300 313	12mm bore x 80mm stroke	£37.15
300 314	12mm bore x 100mm stroke	£38.74
300 316	16mm bore x 10mm stroke	£35.96
300 317	16mm bore x 25mm stroke	£36.71
300 318	16mm bore x 40mm stroke	£37.45
300 319	16mm bore x 50mm stroke	£38.24
300 320	16mm bore x 80mm stroke	£39.65
300 321	16mm bore x 100mm stroke	£40.88
300 322	16mm bore x 125mm stroke	£41.93
300 323	16mm bore x 160mm stroke	£43.46
300 324	16mm bore x 200mm stroke	£44.61
300 325	16mm bore x 250mm stroke	£53.94
300 326	16mm bore x 300mm stroke	£55.05
300 327	16mm bore x 320mm stroke	£58.11
300 328	20mm bore x 10mm stroke	£36.35
300 329	20mm bore x 25mm stroke	£38.18
300 330	20mm bore x 40mm stroke	£38.98
300 331	20mm bore x 50mm stroke	£39.71
300 332	20mm bore x 80mm stroke	£41.82
300 333	20mm bore x 100mm stroke	£43.26
300 334	20mm bore x 125mm stroke	£44.05

Other Stroke lengths available.

contact the sales office for more information

Contact Pneutek Solutions on 01698 540642



300 335 20mm bore x 160mm stroke £45.06
 300 336 20mm bore x 200mm stroke £47.68
 300 337 20mm bore x 250mm stroke £51.03
 300 338 20mm bore x 300mm stroke £53.89
 300 339 20mm bore x 320mm stroke £55.14

300 340 25mm bore x 10mm stroke £40.62
 300 341 25mm bore x 25mm stroke £41.40
 300 342 25mm bore x 40mm stroke £42.34
 300 343 25mm bore x 50mm stroke £42.86
 300 344 25mm bore x 80mm stroke £44.46
 300 345 25mm bore x 100mm stroke £45.66
 300 346 25mm bore x 125mm stroke £47.55
 300 347 25mm bore x 160mm stroke £50.11
 300 348 25mm bore x 200mm stroke £53.06
 300 349 25mm bore x 250mm stroke £56.72
 300 350 25mm bore x 300mm stroke £60.12
 300 351 25mm bore x 320mm stroke £61.88



300 370 Swivel Rod Eye 8mm £18.10
 300 371 Swivel Rod Eye 10mm £18.10
 300 372 Swivel Rod Eye 12mm £16.88
 300 373 Swivel Rod Eye 16mm £16.88
 300 374 Swivel Rod Eye 20mm £18.10
 300 375 Swivel Rod Eye 25mm £18.10



300 376 Rod Coupling Plate 20mm £34.89
 300 377 Rod Coupling Plate 25mm £36.54



300 378 Self Aligning Rod 20mm £31.12
 300 379 Self Aligning Rod 25mm £32.94



300 380 Piston Rod Socket Joint 12mm £26.34
 300 381 Piston Rod Socket Joint 16mm £26.34
 300 382 Piston Rod Socket Joint 20mm £31.56
 300 383 Piston Rod Socket Joint 25mm £31.56



300 352 Foot Mountings 8mm bore £4.84
 300 353 Foot Mountings 10mm bore £4.84
 300 354 Foot Mountings 12mm bore £5.96
 300 355 Foot Mountings 16mm bore £5.96
 300 356 Foot Mountings 20mm bore £6.78
 300 357 Foot Mountings 25mm bore £6.78



300 358 Rear Trunnion 8mm bore £4.96
 300 359 Rear Trunnion 10mm bore £4.96
 300 360 Rear Trunnion 12mm bore £5.06
 300 361 Rear Trunnion 16mm bore £5.06
 300 362 Rear Trunnion 20mm bore £6.65
 300 363 Rear Trunnion 25mm bore £6.65



300 364 Fork Rod End 8mm £4.42
 300 365 Fork Rod End 10mm £4.42
 300 366 Fork Rod End 12mm £3.12
 300 367 Fork Rod End 16mm £3.12
 300 368 Fork Rod End 20mm £3.25
 300 369 Fork Rod End 25mm £2.82



300 384 Front/Rear Flange 8mm £2.14
 300 385 Front/Rear Flange 10mm £2.14
 300 386 Front/Rear Flange 12mm £2.62
 300 387 Front/Rear Flange 16mm £2.62
 300 388 Front/Rear Flange 20mm £3.58
 300 389 Front/Rear Flange 25mm £3.58



300 390 Piston Rod Nut 8mm bore £0.32
 300 391 Piston Rod Nut 10mm bore £0.32
 300 392 Piston Rod Nut 12mm bore £0.40
 300 393 Piston Rod Nut 16mm bore £0.45
 300 394 Piston Rod Nut 20mm bore £0.45
 300 395 Piston Rod Nut 25mm bore £0.45



300 396 Front Nose Nut 8mm bore £1.98
 300 397 Front Nose Nut 10mm bore £1.98
 300 398 Front Nose Nut 12mm bore £2.44
 300 399 Front Nose Nut 16mm bore £2.44
 300 400 Front Nose Nut 20mm bore £2.85
 300 401 Front Nose Nut 25mm bore £2.85

316 Stainless Steel Fittings Range

Metric Twin Ferrule Compression Fittings Range



BSPT Fittings



BSPP Fittings



Male Elbow BSPT

400 001	3mm x 1/8bspt	£6.96
400 002	4mm x 1/8 bspt	£7.22
400 003	4mm x 1/4 bspt	£7.98
400 004	6mm x 1/4 bspt	£6.98
400 005	6mm x 3/8 bspt	£8.11
400 006	6mm x 1/2 bspt	£10.86
400 007	8mm x 1/8 bspt	£6.81
400 008	8mm x 1/4 bspt	£7.06
400 009	8mm x 3/8 bspt	£8.54
400 010	8mm x 1/2 bspt	£10.86
400 011	10mm x 1/8 bspt	£8.34
400 012	10mm x 1/4 bspt	£9.01
400 013	10mm x 3/8 bspt	£9.98
400 014	10mm x 1/2 bspt	£11.53
400 015	12mm x 1/4 bspt	£12.45
400 016	12mm x 3/8 bspt	£12.89
400 017	12mm x 1/2 bspt	£13.92

400 018	3mm x 1/8 bspp	£8.55
400 019	4mm x 1/8 bspp	£8.55
400 020	6mm x 1/4 bspp	£8.49
400 021	6mm x 3/8 bspp	£10.52
400 022	6mm x 1/2 bspp	£13.84
400 023	8mm x 1/8 bspp	£9.12
400 024	8mm x 1/4 bspp	£10.52
400 025	8mm x 3/8 bspp	£11.33
400 026	8mm x 1/2 bspp	£14.68
400 027	10mm x 1/8 bspp	£9.98
400 028	10mm x 1/4 bspp	£11.01
400 029	10mm x 3/8 bspp	£12.56
400 030	10mm x 1/2 bspp	£14.58
400 031	12mm x 1/8 bspp	£18.91
400 032	12mm x 1/4 bspp	£15.62
400 033	12mm x 3/8 bspp	£16.24
400 034	12mm x 1/2 bspp	£17.84

400 035	4mm x 1/8 bspt	£10.79
400 036	4mm x 1/4 bspt	£12.99
400 037	6mm x 1/8 bspt	£11.08
400 038	6mm x 1/4 bspt	£11.98
400 039	6mm x 3/8 bspt	£15.98
400 040	6mm x 1/2 bspt	£18.15
400 041	8mm x 1/8 bspt	£11.89
400 042	8mm x 1/4 bspt	£12.14
400 043	8mm x 3/8 bspt	£17.11
400 044	8mm x 1/2 bspt	£20.04
400 045	10mm x 1/8 bspt	£14.92
400 046	10mm x 1/4 bspt	£14.59
400 047	10mm x 3/8 bspt	£17.19
400 048	10mm x 1/2 bspt	£21.62
400 049	12mm x 1/4 bspt	£19.97
400 050	12mm x 3/8 bspt	£19.97
400 051	12mm x 1/2 bspt	£24.60



400 052	3mm Equal Elbow	£13.05
400 053	4mm Equal Elbow	£13.05
400 054	6mm Equal Elbow	£13.91
400 055	8mm Equal Elbow	£14.46
400 056	10mm Equal Elbow	£16.66
400 057	12mm Equal Elbow	£26.68



400 058	3mm Union	£10.64
400 059	4mm Union	£10.44
400 060	6mm Union	£10.81
400 061	8mm Union	£11.74
400 062	10mm Union	£14.29
400 063	12mm Union	£21.32



400 064	3mm Equal Tee	£21.05
400 065	4mm Equal Tee	£21.88
400 066	6mm Equal Tee	£19.91
400 067	8mm Equal Tee	£23.46
400 068	10mm Equal Tee	£25.66
400 069	12mm Equal Tee	£36.68

Other types and sizes available, please contact Pneutek for more information.

For NPT sizes add N to part number example: 400 002N 4mm x 1/8 npt Straight male connector at £7.22

Imperial sizes also available in Bsp and NPT.

Panel Mounted Valves

22.5mm & 30mm

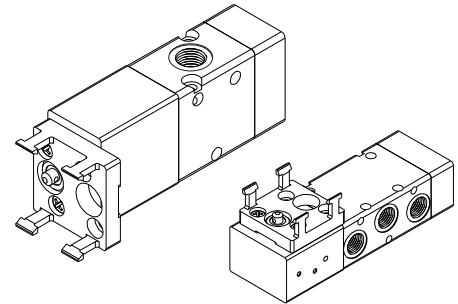
1/8 bsp 3/2, 5/2, 5/3 ported valves



- 300 529 Push Button/Spring 3/2 £32.95
- 300 530 Push Button/Spring 5/2 £51.14
- 300 531 Mushroom Button/Spring 3/2 £33.88
- 300 532 Mushroom Button/Spring 5/2 £52.46

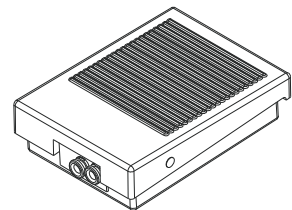
- 300 533 Short Twist Lever/Spring 3/2 £32.95
- 300 534 Short Twist Lever/Spring 5/2 £51.14
- 300 535 Long Twist Lever/Spring 3/2 £33.88
- 300 536 Long Twist Lever/Spring 5/2 £52.46

- 300 537 Short Twist Lever/Detented 3/2 £32.95
- 300 538 Short Twist Lever/Detented 5/2 £51.14
- 300 539 Long Twist Lever/Detented 3/2 £33.88
- 300 540 Long Twist Lever/Detented 5/2 £52.46
- 300 541 Twist Lever 3 Detented Position 5/3 Open Centres £61.19
- 300 542 Twist Lever 3 Detented Position 5/3 Closed Centres £61.19



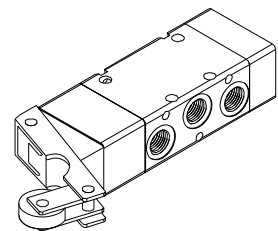
Foot Valves

- 300 543 Open Foot Valve 3/2, 4mm £51.18
- 300 544 Protected Foot Valve/Spring 5/2, 1/4 £62.18
- 300 545 Protected Foot Valve/Detented 5/2, 1/4 £ 62.18



Mechanical Valves

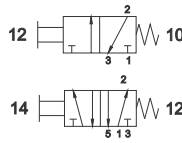
- 300 546 Button Spring 3/2, 1/8 £21.16
- 300 547 Button Spring 5/2, 1/8 £26.11
- 300 548 Roller Lever/Spring 3/2, 1/8 £28.72
- 300 549 Roller Lever/Spring 5/2, 1/8 £31.42
- 300 550 One Way Roller Trip 3/2, 1/8 £36.79
- 300 551 One Way Roller Trip 5/2, 1/8 £38.41



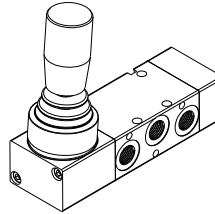
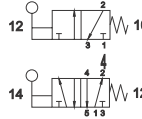
- 300 901 Adjustable Roller Valve 3/2, 1/8 £74.18
- 300 544 Adjustable Roller Valve 5/2, 1/8 £78.48

Manual Valves

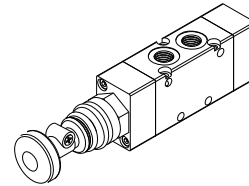
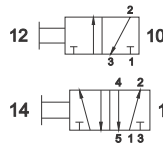
- 300 501 Push Button/Spring 1/8, 3/2 £25.11
- 300 502 Push Button/Spring 1/4, 3/2 £48.40
- 300 503 Push Button/Spring 1/8, 5/2 £27.10
- 300 504 Push Button/Spring 1/4, 5/2 £50.15



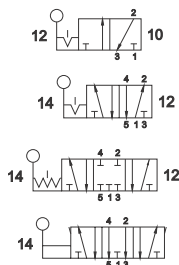
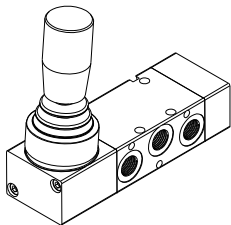
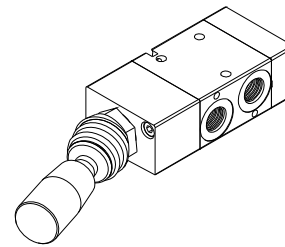
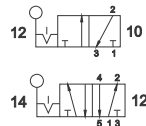
- 300 505 Hand Lever/Spring 1/8, 3/2 £35.18
- 300 506 Hand Lever/Spring 1/4, 3/2 £61.19
- 300 507 Hand Lever/Spring 1/8, 5/2 £40.14
- 300 508 Hand Lever/Spring 1/4, 5/2 £62.98



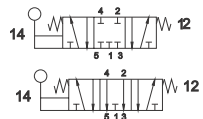
- 300 509 Push/Pull Detented 1/8, 3/2 £25.11
- 300 510 Push/Pull Detented 1/4, 3/2 £48.40
- 300 511 Push/Pull Detented 1/8, 5/2 £27.10
- 300 512 Push/Pull Detented 1/4, 5/2 £50.15



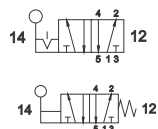
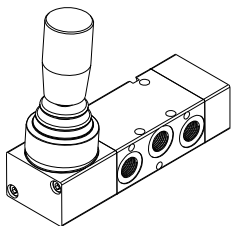
- 300 513 Toggle Valve Lever 1/8, 3/2 £25.11
- 300 514 Toggle Valve Lever 1/4, 3/2 £48.40
- 300 515 Toggle Valve Lever 1/8, 5/2 £27.10
- 300 516 Toggle Valve Lever 1/4, 5/2 £50.15



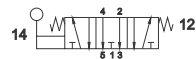
- 300 517 Hand Lever Detented 1/8, 3/2 £35.18
- 300 518 Hand Lever Detented 1/4, 3/2 £61.19
- 300 519 Hand Lever Detented 1/8, 5/2 £40.14
- 300 520 Hand Lever Detented 1/4, 5/2 £62.98
- 300 521 Hand Lever Detented 1/8, 5/2, c.c £41.78
- 300 522 Hand Lever Detented 1/4, 5/3, c.c £64.98
- 300 523 Hand Lever Detented 1/8, 5/3, o.c £41.78
- 300 524 Hand Lever Detented 1/4, 5/3, o.c £64.98



- 300 525 Hand Lever Spring Centered 1/8, 5/3 c.c £41.78
- 300 526 Hand Lever Spring Centered 1/4, 5/3 c.c £64.98
- 300 527 Hand Lever Spring Centered 1/8, 5/3 o.c £41.78
- 300 528 Hand Lever Spring Centered 1/4, 5/3 o.c £64.98



- 300 701 Hand Lever Detented 1/2, 5/2 £152.78
- 300 702 Hand Lever Spring 1/2, 5/2 £152.78



- 300 703 Hand Lever Spring Centered 1/2, 5/3 c.c £168.43
- 300 704 Hand Lever Spring Centered 1/2, 5/3 o.c £168.43



- 300 525 Hand Lever Detented 1/2, 5/3 c.c £168.43
- 300 526 Hand Lever Detented 1/2, 5/3 o.c £168.43

Solenoid Valves

Available in normally open or normally closed
For air, water, oil and gases compatible with materials of construction

Brass Solenoid Valves Normally Closed

- 300 552 2/2, 1/8 BSP + Voltage £43.19
- 300 553 2/2, 1/4 BSP + Voltage £50.11
- 300 554 2/2, 3/8 BSP + Voltage £64.52
- 300 555 2/2, 1/2 BSP + Voltage £64.52
- 300 556 2/2, 3/4 BSP + Voltage £96.78
- 300 557 2/2, 1" BSP + Voltage £124.16
- 300 558 2/2, 1 1/4 BSP + Voltage £136.17
- 300 559 2/2, 1 1/2 BSP + Voltage £181.82
- 300 560 2/2, 2" BSP + Voltage £188.15



Voltages available are 12VDC, 24VDC, 24VDC, 24VAC, 115V, 230V. Coils and DIN Plugs are included in above prices.

Brass Solenoid Valves Normally Closed

- 300 561 3/2, 1/8 BSP + Voltage £43.18
- 300 562 3/2, 1/4 BSP + Voltage £43.18

Coils and DIN plugs are included in above prices. Please state voltage required when ordering valves.

Stainless Steel Solenoid Valves Normally Closed

- 300 563 2/2, 1/8 BSP + Voltage £65.52
- 300 564 2/2, 1/4 BSP + Voltage £68.52
- 300 565 2/2, 3/8 BSP + Voltage £151.89
- 300 566 2/2, 1/2 BSP + Voltage £151.89
- 300 567 2/2, 3/4 BSP + Voltage £198.16
- 300 568 2/2, 1" BSP + Voltage £216.72
- 300 569 2/2, 1 1/4 BSP + Voltage £307.15
- 300 570 2/2, 1 1/2 BSP + Voltage £505.12
- 300 571 2/2, 2" BSP + Voltage £522.98



Coils and Din plugs included in above prices. Please state voltage required.

Air Solenoid Valves 1/8", 1/4" BSP

- 300 572 3/2, 1/8 + Voltage Solenoid/Spring £46.04
- 300 573 5/2, 1/8 + Voltage Solenoid/Spring £48.12
- 300 574 3/2, 1/8 + Voltage Solenoid/Solenoid £64.11
- 300 575 5/2, 1/8 + Voltage Solenoid/Solenoid £68.79
- 300 576 5/3, 1/8 + Voltage Solenoid/Solenoid Closed Centre £98.12
- 300 577 5/3, 1/8 + Voltage Solenoid/Solenoid Open Centre £ 98.12
- 300 578 3/2, 1/4 + Voltage Solenoid/Spring £50.19
- 300 579 5/2, 1/4 + Voltage Solenoid/Spring £56.10
- 300 580 3/2, 1/4 + Voltage Solenoid/Solenoid £74.12
- 300 581 5/2, 1/4 + Voltage Solenoid/Solenoid £76.18
- 300 582 5/3, 1/4 + Voltage Solenoid/Solenoid Closed Centre £112.46
- 300 583 5/3, 1/4 + Voltage Solenoid/Solenoid Open Centre £112.46



Coils available in 12VDC, 24VDC, 48VDC, 24VAC, 115VAC, 230VAC @ £8.89 each.
Din Plugs are included with the coils. Add £6.49 for LED Din plugs if required.
Remember to order two coils for Solenoid/Solenoid valves.
Please state voltage required when ordering valves.

Air Solenoid Valves (continued)

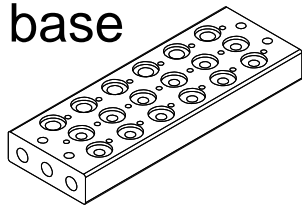
1/2" BSP



300 584 3/2, 1/2 + Voltage Solenoid/Spring	£139.14
300 585 5/2, 1/2 + Voltage Solenoid/Spring	£142.80
300 586 3/2, 1/2 + Voltage Solenoid/Solenoid	£172.32
300 587 5/2, 1/2 + Voltage Solenoid/Solenoid	£178.90
300 588 5/3, 1/2 + Voltage Solenoid/Solenoid Closed Centre	£198.88
300 589 5/3, 1/2 + Voltage Solenoid/Solenoid Open Centre	£198.88
300 590 5/3, 1/2 + Voltage Solenoid/Solenoid Pressurized Centre	£198.88

Coils available in 12VDC, 24VDC, 48VDC, 24VAC, 115VAC, 230VAC @ £8.89 each.
 Din Plugs are included with the coils. Add £6.49 for LED Din plugs if required.
 Remember to order two coils for Solenoid/Solenoid valves.
 Please state voltage required when ordering valves.

1/8 valve base



1/4" BSP INLETS AT END CAPS

300 591 2 Position Subbase	£20.20		
300 592 3 Position Subbase	£30.44		
300 593 4 Position Subbase	£35.10		
300 594 5 Position Subbase	£41.20	300 595 6 Position Subbase	£46.64
300 596 7 Position Subbase	£52.11	300 597 8 Position Subbase	£58.19
300 598 9 Position Subbase	£66.56	300 599 10 Position Subbase	£74.12
300 600 Blanking Plate for 1/8 Subbase	£6.98		

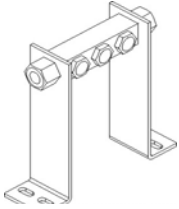
1/4 valve base

3/8" BSP INLETS AT END CAPS

300 601 2 Position Subbase	£22.80	300 602 3 Position Subbase	£30.92
300 603 4 Position Subbase	£36.50	300 604 5 Position Subbase	£44.72
300 605 6 Position Subbase	£48.80	300 606 7 Position Subbase	£57.80
300 607 8 Position Subbase	£63.55		
300 608 Blanking Plate for 1/4 Subbase	£7.52		

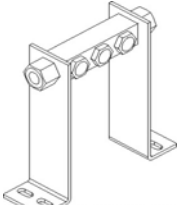
Air Solenoid Subbases (continued)

1/8 Valve Manifolds 1/4"bsp inlets



301 500	2 Position Subbase complete	£29.12
301 501	3 Position Subbase complete	£34.60
301 502	4 Position Subbase complete	£38.72
301 503	5 Position Subbase complete	£44.80
301 504	6 Position Subbase complete	£48.54

1/4 Valve Manifolds 3/8"bsp inlets



301 505	2 Position Subbase complete	£34.18
301 506	3 Position Subbase complete	£38.82
301 507	4 Position Subbase complete	£41.52
301 508	5 Position Subbase complete	£47.78
301 509	6 Position Subbase complete	£51.10

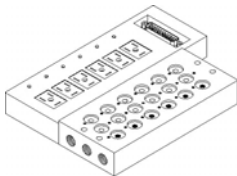
Manifold Heights available in 60mm or 120mm dependant on single or double solenoids required.



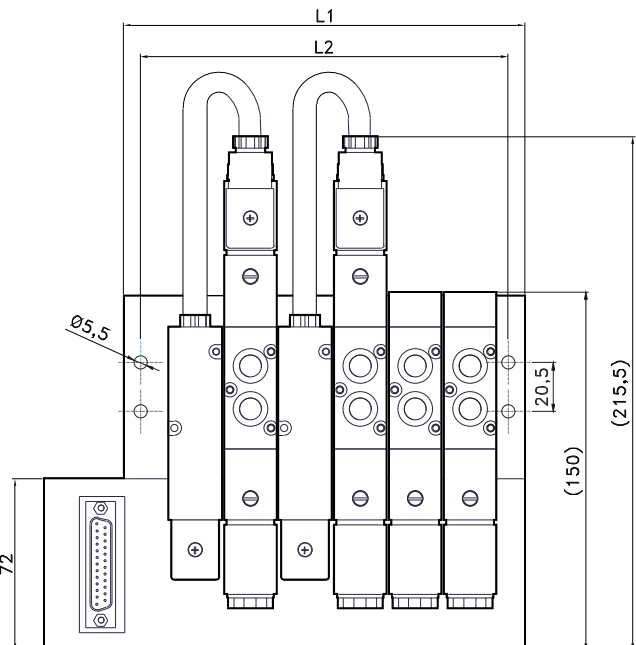
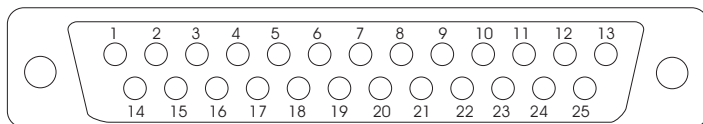
Subbase Only

For 1/8 bsp Single and Double Solenoid Valves. Available with solenoid valves pre-built and tested.

301 510	4 Position Subbase pre-wired with Sub D 25 Pin Connector and 1.5mtr cable	£186.56
301 511	6 Position Subbase pre-wired with Sub D 25 Pin Connector and 1.5mtr cable	£212.20
301 512	8 Position Subbase pre-wired with Sub D 25 Pin Connector and 1.5mtr cable	£266.68
301 513	10 Position Subbase pre-wired with Sub D 25 Pin Connector and 1.5mtr cable	£293.12
301 514	12 Position Subbase pre-wired with Sub D 25 Pin Connector and 1.5mtr cable	£312.94



Stations	L	L1	L2
2	109,5	72	58
3	132,5	96	82
4	155,5	120	106
5	178,5	144	130
6	201,5	168	154
7	224,5	192	178
8	247,5	216	202
9	270,5	240	226
10	293,5	264	250
11	316,5	288	274
12	339,5	312	298



PIN	COLOR	BOBINA/COIL
1	marrone/brown	1
2	rosso/red	2
3	arancio/orange	3
4	rosa/pink	4
5	giallo/yellow	5
6	verde/green	6
7	verdino/light green	7
8	blu/blue	8
9	azzurro/light blue	9
10	viola/purple	10
11	grigio/gray	11
12	bianco/white	12
13	nero/black	negativo

PIN	COLOR	BOBINA/COIL
14	marrone chiaro/light brown	14
15	marrone nero/brown black	15
16	arancio nero/orange black	16
17	rosa nero/pink black	17
18	giallo nero/Yellow black	18
19	verde nero/green black	19
20	verdino nero/light green black	20
21	violetto/light purple	21
22	azzurro nero/light blue black	22
23	violetto bero/light purple black	23
24	grigio nero/gray black	24
25	bianco nero/white black	negativo

Air Pilot and ISO Standard Valves

Air Pilot Valves

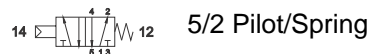
- 301 515 3/2, 1/8 Pilot/Spring £26.98
- 301 516 3/2, 1/8 Pilot/Pilot £29.15
- 301 517 5/2, 1/8 Pilot/Spring £29.54
- 301 518 5/2, 1/8 Pilot/Pilot £32.51
- 301 519 5/3, 1/8 Pilot/Pilot Closed Centres £72.12
- 301 520 5/3, 1/8 Pilot/Pilot Open Centres £72.12
- 301 521 3/2, 1/4 Pilot/Spring £28.42
- 301 522 3/2, 1/4 Pilot/Pilot £32.10
- 301 523 5/2, 1/4 Pilot/Spring £32.19
- 301 524 5/2, 1/4 Pilot/Pilot £34.59
- 301 525 5/3, 1/4 Pilot/Pilot Closed Centres £79.62
- 301 526 5/3, 1/4 Pilot/Pilot Open Centres £79.62



ISO Standard Valves

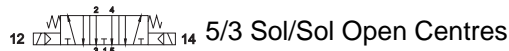
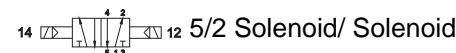
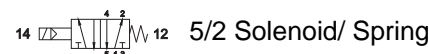
Size 1

- 301 527 Solenoid/Spring 5/2 £71.18
- 301 528 Solenoid/Solenoid 5/2 £84.11
- 301 529 Solenoid/Solenoid 5/3 Closed Centres £106.15
- 301 530 Solenoid/Solenoid 5/3 Open Centres £106.15
- 301 531 Pilot/Spring 5/2 £49.10
- 301 532 Pilot/Pilot 5/2 £49.42
- 301 533 Pilot/Pilot 5/3 Closed Centres £80.12
- 301 534 Pilot/Pilot 5/3 Open Centres £80.12



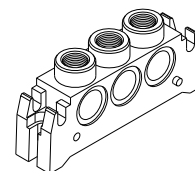
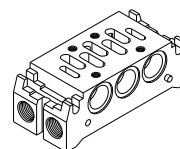
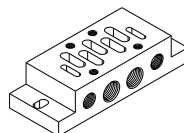
Size 2

- 301 535 Solenoid/Spring 5/2 £92.18
- 301 536 Solenoid/Solenoid 5/2 £108.19
- 301 537 Solenoid/Solenoid 5/3 Closed Centres £118.46
- 301 538 Solenoid/Solenoid 5/3 Open Centres £118.46
- 301 539 Pilot/Spring 5/2 £72.15
- 301 540 Pilot/Pilot 5/2 £72.15
- 301 542 Pilot/Pilot 5/3 Closed Centres £98.52
- 301 543 Pilot/Pilot 5/3 Open Centres £98.52



Size 3

- 300 612 Solenoid/Spring 5/2 £140.11
- 300 613 Solenoid/Solenoid 5/2 £156.12
- 300 614 Solenoid/Solenoid 5/3 Closed Centres £170.74
- 300 615 Solenoid/Solenoid 5/3 Open Centres £170.74
- 300 616 Pilot/Spring 5/2 £128.66
- 300 617 Pilot/Pilot 5/2 £128.66
- 300 618 Pilot/Pilot 5/3 Closed Centres £159.88
- 300 619 Pilot/Pilot 5/3 Open Centres £159.88



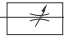
Subbases Available

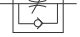
- 300 620 Side Ports 1/4 BSP ISO1 £23.98
- 300 621 Side Ports 3/8 BSP ISO2 £23.98
- 300 622 Side Ports 1/2 BSP ISO3 £52.17
- 300 623 Bottom Ports 1/4 BSP ISO1 £23.98
- 300 624 Bottom Ports 3/8 BSP ISO2 £29.92
- 300 625 Bottom Ports 1/2 BSP ISO3 £38.62

Voltage Coils available are 12vdc, 24vac, 24vdc, 48vac, 110vac and 220vac at £12.89 each
 Remember some valves require two coils. Din plugs are 300 628 at £1.54 each

- 300 701 Flow Control Valve 1/8 bsp £8.44
- 300 702 Flow Control Valve 1/4 bsp £9.51
- 300 703 Flow Control Valve 3/8 bsp £20.12
- 300 704 Flow Control Valve 1/2 bsp £20.12
- 300 705 Flow Control with check valve M5 £8.12
- 300 706 Flow Control with check valve 1/8 bsp £7.88
- 300 707 Flow Control with check valve 1/4 bsp £9.16
- 300 708 Flow Control with check valve 3/8 bsp £20.12
- 300 709 Flow Control with check valve 1/2 bsp £20.12



Flow control is throttled in both directions.  BI-DIRECTIONAL

Flow control with check valves allows full flow in one direction with adjustable flow in the other direction. 

- 300 710 Non Return Valves M5 Fem £7.54
- 300 711 Non Return Valves 1/8 bspf £7.12
- 300 712 Non Return Valve 1/4 bspf £8.89
- 300 713 Non Return Valve 3/8 bspf £10.55
- 300 714 Non Return Valve 1/2 bspf £14.40
- 300 715 Non Return valve 4mm x m5 £8.89
- 300 716 Non Return valve 4mm x 1/8 £9.78
- 300 717 Non Return valve 6mm x 1/8 £9.91
- 300 718 Non Return valve 6mm x 1/4 £10.04
- 300 719 Non Return valve 8mm x 1/8 £11.51
- 300 720 Non Return valve 8mm x 1/4 £11.72
- 300 721 Non Return valve 4mm tube/tube £9.54
- 300 722 Non Return valve 6mm tube/tube £9.78
- 300 723 Non Return valve 8mm tube/tube £10.98
- 300 724 Non Return valve 10mm tube/tube £16.88
- 300 725 Non Return valve 12mm tube/tube £24.71



- 300 726 Quick Exhaust valve M5 £5.92
- 300 727 Quick Exhaust valve 1/8 £4.98
- 300 728 Quick Exhaust valve 1/4 £6.92
- 300 729 Quick Exhaust valve 3/8 £11.24
- 300 730 Quick Exhaust valve 1/2 £12.89
- 300 731 Quick Exhaust valve 3/4 £15.91
- 300 732 Quick Exhaust valve 1" £19.66



Sleeve Valves 3/2

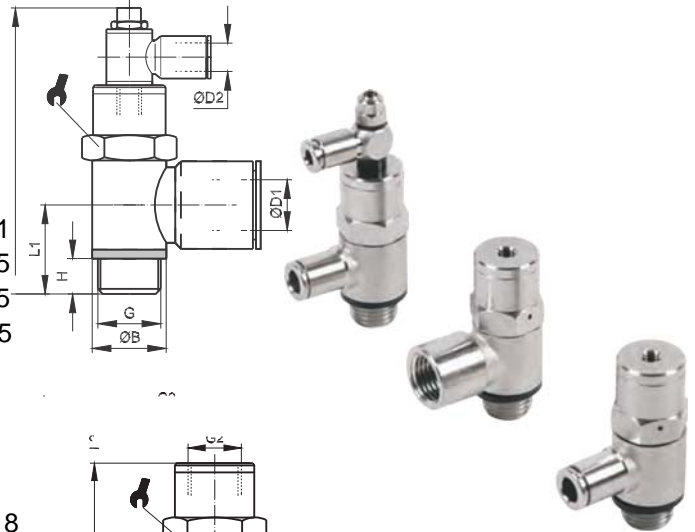
- 300 732 3/2, 1/8 £8.91
- 300 734 3/2, 1/4 £10.54
- 300 735 3/2, 3/8 £12.95
- 300 736 3/2, 1/2 £16.62



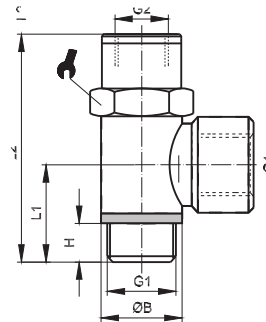
Automatic Valves

The block valve is a pneumatic device that locks the cylinders stroke when there is a loss of pressure in the system. The valves are mounted directly onto the cylinder ports and do not interfere with the normal working of the cylinder.

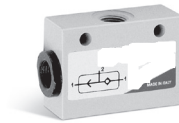
- 300 737 Block Valve 4mm main x 4mm pilot x m5 £34.56
- 300 738 Block Valve 6mm main x 4mm pilot x 1/8 bsp £34.56
- 300 739 Block Valve 6mm main x 4mm pilot x 1/4 bsp £38.79
- 300 740 Block Valve 8mm main x 4mm pilot x 1/8 bsp £38.79
- 300 741 Block Valve 8mm main x 4mm pilot x 1/4 bsp £38.79
- 300 742 Block Valve 8mm main x 4mm pilot x 3/8 bsp £46.11
- 300 743 Block Valve 10mm main x 4mm pilot x 1/4 bsp £46.11
- 300 744 Block Valve 10mm main x 4mm pilot x 3/8 bsp £48.05
- 300 745 Block Valve 12mm main x 4mm pilot x 1/4 bsp £48.05
- 300 746 Block Valve 12mm main x 4mm pilot x 3/8 bsp £48.05



- 300 747 Block Valve m5 pilot x 1/8 bsp inlet/outlet £32.18
- 300 748 Block Valve m5 pilot x 1/4 bsp inlet/outlet £38.89
- 300 749 Block Valve 1/8 pilot x 3/8 bsp inlet/outlet £46.55
- 300 750 Block Valve 1/8 pilot x 1/2 bsp inlet/outlet £53.17



- 300 751 OR Shuttle Valve m5 £14.05
- 300 752 OR Shuttle Valve 1/8 £14.58
- 300 753 OR Shuttle Valve 1/4 £24.19



- 300 754 1/8 bsp Pressure Switch 0-48vac/24vdc 1-10bar, n/open £28.15
- 300 755 1/8 bsp Pressure Switch 0-48vac/24vdc 1-10bar n/closed £28.15
- 300 756 Protective cover with adjusting screw £16.66
- 300 757 Protective cover only £5.89



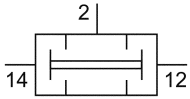
- 300 758 1/8 bsp Pressure Switch 0-250v 1-10bar, n/open or closed £66.42



Air Logic Valves and Timers

Output signal at port 2 is present if both inlets 12 and 14 are pressurized.

If both pressures are different (min. 0.2 bar 2.9 psi), the lower pressure is switched to 2.

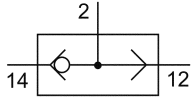


AND valve



- | | |
|-----------------------|--------|
| 300 800 AND Valve M5 | £18.91 |
| 300 801 AND Valve 1/8 | £21.08 |

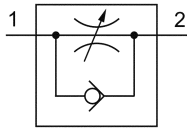
Output signal is present if one inlet is pressurized. The higher input signal (min. difference 0.2 bar 2.9 psi) is dominant.



OR valve



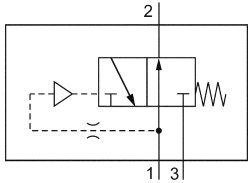
- | | |
|------------------------------|--------|
| 300 803 OR/Shuttle Valve M5 | £18.94 |
| 300 804 OR/Shuttle Valve 1/8 | £23.12 |



This valve is used for the speed control of a pneumatic cylinder

- | | |
|--------------------------------------|--------|
| 300 805 DR-25 Flow Control Valve M5 | £19.44 |
| 300 806 DR-18 Flow Control Valve 1/8 | £20.86 |
| 300 807 DR-14 Flow Control Valve 1/4 | £24.12 |
| 300 808 DR-12 Flow Control Valve 1/2 | £45.19 |

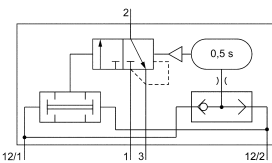
3/2-way one-shot valve. It converts a continuous pneumatic signal into a 0.3 s pulse.



- | | |
|--------------------------------|--------|
| 300 809 SU-M5 Impulse Valve M5 | £52.18 |
|--------------------------------|--------|

Two Hand Start Control Valves

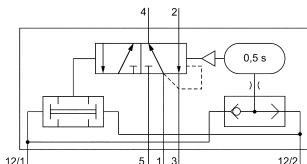
The valve operates after two air signals are applied to ports Z1 & Z2 within 0.5secs. If the input does not arrive within 0.5secs then the valve will not operate.



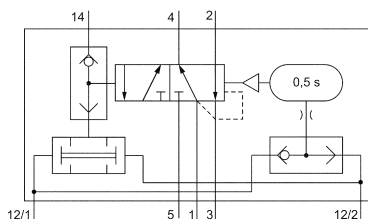
SZ-18-310



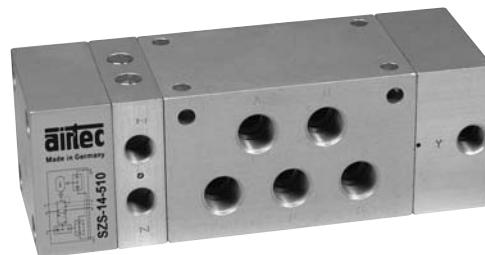
- | | |
|--|---------|
| 300 810 SZ-18-310 1/8 3/2 2 Hand Control | £219.12 |
| 300 811 SZ-14-510 1/4 5/2 2 Hand Control | £287.15 |
| 300 812 SZS-14-310 1/4 3/2 With Self Locking | £334.18 |
| 300 813 SZS-14-510 1/4 5/2 With Self Locking | £388.20 |



SZ-14-510



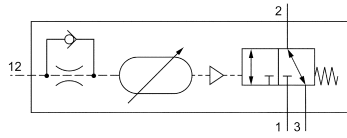
SZS-14-510



Two Hand Start Control Valves SZS

The valve operates the same as the SZ valve but it has a locking option when air is applied at port Y(14). When you lose air at Y(14) then you can use the valve as a standard two hand start valve.

Pneumatic Timers



Design, function and technical data

This valve may be used either normally open or normally closed.

Normally closed: pressure inlet port 1 (P).

Normally open: pressure inlet port 3 (R).

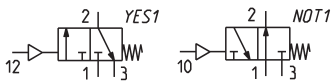
A signal arriving at 12 (Z) switches the flow of the valve from 1 (P) to 2 (A) and closes port 3 (R) after the set time has expired.

Instead of supplying main pressure to either port 1 or 3, the branched signal line can be connected to 1 or 3. The signal line to port 1 or 3 must not be longer than the signal line to port 12

Connection	M5 (10/32 UNF)	G1/8
Nominal size	3.2 mm	6 mm
Nominal flow	160 NI/min (0.163 Cv)	600 NI/min (0.610 Cv)
Working pressure range	3 ... 10 bar (43.5 ... 145 psi)	
Pilot pressure range	equivalent to working pressure	
Time range	0.25 ... 5 s	0.5 ... 10 s oder 1 ... 20 s
Temperature range	- 10 °C ... + 70 °C (+ 14 °F ... + 158 °F)	
Materials	Body: Al (anodized), Seals: NBR and POM, Inner parts: Al, stainless steel, brass	
Medium	Compressed air in accordance with ISO 8573-1: 2001, Class 7 4 – and free of aggressive additives	
Weight	0.135 kg (0.297 lb.)	0.36 kg (0.79 lb.)

300 814	VZ-25-310	M5 3/2 Timer 0.25....5 sec	£112.34
300 815	VZ-18-310	1/8 3/2 Timer 0.5.....10 sec	£118.20
300 816	VZ-18-310-20	1/8 3/2 Timer 1.....20 sec	£122.80
300 817	VZ-18-510	1/8 5/2 Timer 0.5.....10 sec	£182.44
300 818	VZ-18-510-20	1/8 5/2 Timer 1.....20 sec	£182.44

NOT and YES Valves



300 819	2LS-SB4-B 4mm Push in Yes Valve	£72.38
300 820	2LT-SB4-B 4mm Push in Not Valve	£72.38

Yes Valve: When air is applied to port 12 then air flows from 1 to 2.

Not Valve: Air flows from 1 to 2 when no air is present at port 10.

Pneutek Solutions UK Ltd Actuated Valve Catalogue

Brass 2 way Air actuated ball valves



500 001	1/4	Double acting N/Closed	40 bar	£89.18
500 002	3/8	Double acting N/Closed	40 bar	£89.18
500 003	1/2	Double acting N/Closed	40 bar	£94.78
500 004	3/4	Double acting N/Closed	40 bar	£98.89
500 005	1"	Double acting N/Closed	40bar	£108.98
500 006	1 1/4	Double acting N/Closed	40 bar	£118.18
500 007	1 1/2	Double acting N/Closed	40 bar	£131.32
500 008	2"	Double acting N/Closed	40 bar	£154.19
500 009	2 1/2	Double acting N/Closed	25 bar	£284.76
500 010	3"	Double acting N/Closed	16 bar	£345.12
500 011	4"	Double acting N/Closed	16 bar	£638.04
500 012	1/4	Single acting N/Closed	40 bar	£117.18
500 013	3/8	Single acting N/Closed	40 bar	£117.18
500 014	1/2	Single acting N/Closed	40 bar	£124.14
500 015	3/4	Single acting N/Closed	40 bar	£128.88
500 016	1"	Single acting N/Closed	40bar	£142.19
500 017	1 1/4	Single acting N/Closed	40 bar	£149.72
500 018	1 1/2	Single acting N/Closed	40 bar	£212.11
500 019	2"	Single acting N/Closed	40 bar	£224.66
500 020	2 1/2	Single acting N/Closed	25 bar	£366.54
500 021	3"	Single acting N/Closed	16 bar	£436.71
500 022	4"	Single acting N/Closed	16 bar	£702.89

Brass 2 way Electric actuated ball valves

Available in 12v ac/dc, 24v ac/dc, 110v ac, 220v ac, other options available.



500 023 + voltage	1/4	40 bar	£289.11
500 024 + voltage	3/8	40 bar	£289.11
500 025 + voltage	1/2	40 bar	£294.76
500 026 + voltage	3/4	40 bar	£298.82
500 027 + voltage	1"	40bar	£312.56
500 028 + voltage	1 1/4	40 bar	£365.55
500 029 + voltage	1 1/2	40 bar	£446.89
500 030 + voltage	2"	40 bar	£515.91
500 031 + voltage	2 1/2	25 bar	£642.45
500 032 + voltage	3"	16 bar	£778.12
500 033 + voltage	4"	16 bar	£1165.04

316 Stainless Steel 2 way Air actuated ball valves



500 034	1/4	Double acting N/Closed	64 bar	£118.26
500 035	3/8	Double acting N/Closed	64 bar	£118.26
500 036	1/2	Double acting N/Closed	64 bar	£122.78
500 037	3/4	Double acting N/Closed	64 bar	£124.89
500 038	1"	Double acting N/Closed	64 bar	£149.68
500 039	1 1/4	Double acting N/Closed	64 bar	£172.11
500 040	1 1/2	Double acting N/Closed	64 bar	£229.17
500 041	2"	Double acting N/Closed	64 bar	£302.58
500 042	2 1/2	Double acting N/Closed	64 bar	£442.62
500 043	3"	Double acting N/Closed	64 bar	£591.12

500 044	1/4	Single acting N/Closed	64 bar	£149.59
500 045	3/8	Single acting N/Closed	64 bar	£149.59
500 046	1/2	Single acting N/Closed	64 bar	£155.88
500 047	3/4	Single acting N/Closed	64 bar	£162.55
500 048	1"	Single acting N/Closed	64 bar	£185.56
500 049	1 1/4	Single acting N/Closed	64 bar	£244.49
500 050	1 1/2	Single acting N/Closed	64 bar	£296.72
500 051	2"	Single acting N/Closed	64 bar	£391.17
500 052	2 1/2	Single acting N/Closed	64 bar	£566.19
500 053	3"	Single acting N/Closed	64 bar	£735.18

316 Stainless Steel 2 way Electric actuated ball valves

Available in 12v ac/dc, 24v ac/dc, 110v ac, 220v ac, other options available.



500 054 + voltage	1/4	64 bar	£382.18
500 055 + voltage	3/8	64 bar	£382.18
500 056 + voltage	1/2	64 bar	£391.16
500 057 + voltage	3/4	64 bar	£389.77
500 058 + voltage	1"	64 bar	£402.11
500 059 + voltage	1 1/4	64 bar	£420.65
500 060 + voltage	1 1/2	64 bar	£488.10
500 061 + voltage	2"	64 bar	£521.78
500 062 + voltage	2 1/2	64 bar	£844.68
500 063 + voltage	3"	64 bar	£1244.19



Brass 3 way L and T ported ball valves

L		T				
500 064	500 065	1/4	Double acting	30 bar		£112.88
500 066	500 067	3/8	Double acting	30 bar		£112.88
500 068	500 069	1/2	Double acting	30 bar		£119.12
500 070	500 071	3/4	Double acting	30 bar		£147.11
500 072	500 073	1	Double acting	20 bar		£172.56
500 074	500 075	1 1/4	Double acting	20 bar		£204.59
500 076	500 077	1 1/2	Double acting	16 bar		£311.10
500 078	500 079	2"	Double acting	16 bar		£412.88

L		T				
500 080	500 081	1/4	Single acting	30 bar		£144.56
500 082	500 083	3/8	Single acting	30 bar		£144.56
500 084	500 085	1/2	Single acting	30 bar		£152.78
500 086	500 087	3/4	Single acting	30 bar		£179.19
500 088	500 089	1"	Single acting	20 bar		£242.52
500 090	500 091	1 1/4	Single acting	20 bar		£288.96
500 092	500 093	1 1/2	Single acting	16 bar		£348.18
500 094	500 095	2"	Single acting	16 bar		£498.92

316 Stainless Steel 3 way L and T ported ball valves



L		T				
500 096	500 097	1/4	Double acting	64 bar		£178.98
500 098	500 099	3/8	Double acting	64 bar		£180.15
500 100	500 101	1/2	Double acting	64 bar		£180.15
500 102	500 103	3/4	Double acting	64 bar		£204.19
500 104	500 105	1"	Double acting	64 bar		£238.56
500 106	500 107	1 1/4	Double acting	54 bar		£324.89
500 108	500 109	1 1/2	Double acting	54 bar		£392.48
500 110	500 111	2"	Double acting	54 bar		£556.28

L		T				
500 112	500 113	1/4	Single acting	64 bar		£214.11
500 114	500 115	3/8	Single acting	64 bar		£214.11
500 116	500 117	1/2	Single acting	64 bar		£219.56
500 118	500 119	3/4	Single acting	64 bar		£233.89
500 120	500 121	1"	Single Acting	64 bar		£272.18
500 122	500 123	1 1/4	Single acting	54 bar		£348.78
500 124	500 125	1 1/2	Single acting	54 bar		£478.15
500 126	500 127	2"	Single acting	54 bar		£644.14

Brass 3 way L and T ported Electric operated ball valves



L		T				
500 128	500 129	1/4	+ voltage	30 bar		£377.15
500 130	500 131	3/8	+ voltage	30 bar		£377.15
500 132	500 133	1/2	+ voltage	30 bar		£391.28
500 133	500 135	3/4	+ voltage	30 bar		£399.88
500 136	500 137	1"	+ voltage	20 bar		£422.11
500 138	500 139	1 1/4	+ voltage	20 bar		£451.10
500 140	500 141	1 1/2	+ voltage	16 bar		£509.78
500 142	500 143	2"	+ voltage	16 bar		£612.15

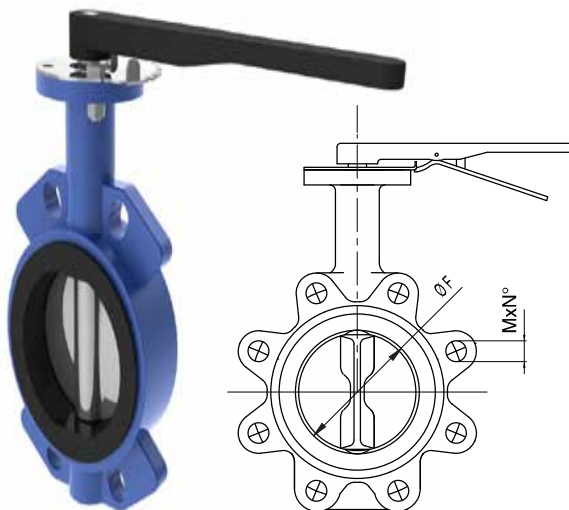
316 Stainless steel 3 way L and T ported Electric operated ball valves

L		T				
500 144	500 145	1/4	+ voltage	64 bar		£428.13
500 146	500 147	3/8	+ voltage	64 bar		£428.13
500 148	500 149	1/2	+ voltage	64 bar		£434.56
500 150	500 151	3/4	+ voltage	64 bar		£449.89
500 152	500 153	1"	+ voltage	64 bar		£470.18
500 154	500 155	1 1/4	+ voltage	54 bar		£526.11
500 156	500 157	1 1/2	+ voltage	54 bar		£839.72
500 158	500 159	2"	+ voltage	54 bar		£959.17

Butterfly Valves PN16 BS4504/ ANSI 150

Wafer or lugged butterfly valves, cast iron, EPDM Seats with st/steel disc

Also available with NBR, Viton and PTFE seats



Wafer Type

Lugged Type

500 160	1"	DN 25	16 bar	£69.14
500 161	1 1/4"	DN 32	16 bar	£69.14
500 162	1 1/2"	DN 40	16 bar	£69.14
500 163	2"	DN 50	16 bar	£71.53
500 164	2 1/2"	DN 65	16 bar	£76.65
500 165	3"	DN 80	16 bar	£83.10
500 166	4"	DN 100	16 bar	£112.89
500 167	5"	DN 125	16 bar	£156.92
500 168	6"	DN 150	16 bar	£182.18
500 169	8"	DN 200	16 bar	£348.16
500 170	10"	DN 250	16 bar	£576.15
500 171	12"	DN 300	16 bar	£896.84

Butterfly Valves PN16 BS4504/ ANSI 150

Wafer or lugged butterfly valves, cast iron, EPDM Seats with st/steel disc

Also available with NBR, Viton and PTFE seats



500 172	1 1/4"	DN 32	Double acting N/Closed	£218.89
500 173	1 1/2"	DN 40	Double acting N/Closed	£218.89
500 174	2"	DN 50	Double acting N/Closed	£189.19
500 175	2 1/2"	DN 65	Double acting N/Closed	£209.78
500 176	3"	DN 80	Double acting N/Closed	£232.12
500 177	4"	DN100	Double acting N/Closed	£380.68
500 178	5"	DN125	Double acting N/Closed	£398.11
500 179	6"	DN150	Double acting N/Closed	£413.88
500 180	8"	DN200	Double acting N/Closed	£598.55
500 181	10"	DN250	Double acting N/Closed	£1088.80
500 182	12"	DN300	Double acting N/Closed	£1454.18

500 183	1 1/4"	DN 32	Single acting N/Closed	£248.19
500 184	1 1/2"	DN 40	Single acting N/Closed	£248.19
500 185	2"	DN 50	Single acting N/Closed	£217.12
500 186	2 1/2"	DN 65	Single acting N/Closed	£244.08
500 187	3"	DN 80	Single acting N/Closed	£258.52
500 188	4"	DN100	Single acting N/Closed	£414.89
500 189	5"	DN125	Single acting N/Closed	£434.92
500 190	6"	DN150	Single acting N/Closed	£659.11
500 191	8"	DN200	Single acting N/Closed	£754.68
500 192	10"	DN250	Single acting N/Closed	£1206.56
500 193	12"	DN300	Single acting N/Closed	£1564.78

Butterfly Valves PN16 BS4504/ ANSI 150 Electric Actuated Wafer or Lugged Pattern

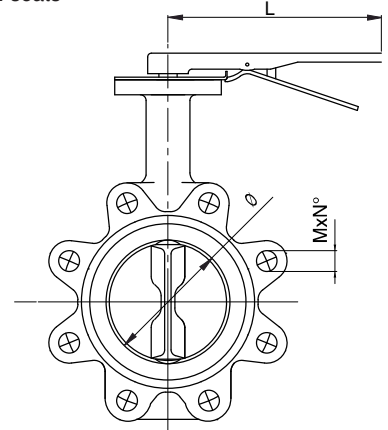
Wafer or Lugged butterfly valves, cast iron, EPDM Seats with st/steel disc

Also available with NBR, Viton and PTFE seats



Wafer Type

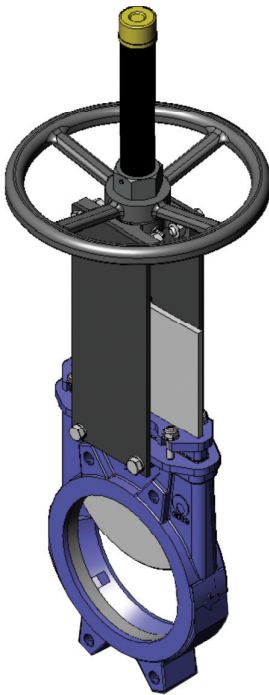
500 200	11/4"	DN 32	+Voltage	16 bar	£412.74
500 201	11/2"	DN 40	+Voltage	16 bar	£412.74
500 202	2"	DN 50	+Voltage	16 bar	£412.74
500 203	2 1/2"	DN 65	+Voltage	16 bar	£416.11
500 204	3"	DN 80	+Voltage	16 bar	£441.59
500 205	4"	DN100	+Voltage	16 bar	£609.14
500 206	5"	DN125	+Voltage	16 bar	£1149.15
500 207	6"	DN150	+Voltage	16 bar	£1174.88
500 208	8"	DN200	+Voltage	16 bar	£1589.66
500 209	10"	DN250	+Voltage	16 bar	£1998.04
500 210	12"	DN300	+Voltage	16 bar	£2307.19



Lugged Type

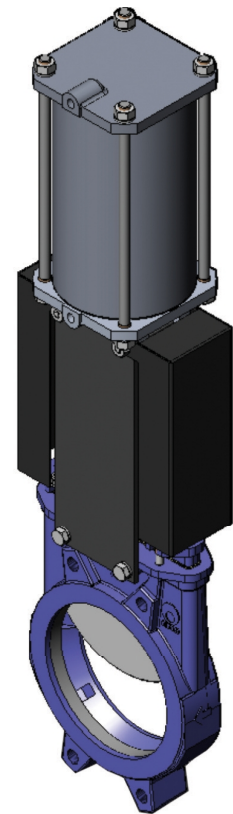
Knife Gate Valves-Manual and Air Operated

Cast Iron Body, St/Steel Disc, EPDM seals. Fully stainless and other seal options are available



500 211	2"	DN 50	Manual operated	10 bar	£238.15
500 212	2 1/2"	DN 65	Manual operated	10 bar	£246.87
500 213	3"	DN 80	Manual operated	10 bar	£266.81
500 214	4"	DN100	Manual operated	10 bar	£296.71
500 215	5"	DN125	Manual operated	10 bar	£351.46
500 216	6"	DN150	Manual operated	8 bar	£395.12
500 217	8"	DN200	Manual operated	7 bar	£566.90
500 218	10"	DN250	Manual operated	5 bar	£744.32
500 219	12"	DN300	Manual operated	5 bar	£916.51
500 220	14"	DN350	Manual operated	4 bar	£1512.35
500 221	16"	DN400	Manual operated	4 bar	£1819.44

500 222	2"	DN 50	Double acting	10 bar	£288.55
500 223	2 1/2"	DN 65	Double acting	10 bar	£299.86
500 224	3"	DN 80	Double acting	10 bar	£316.77
500 225	4"	DN100	Double acting	10 bar	£372.85
500 226	5"	DN125	Double acting	10 bar	£451.98
500 227	6"	DN150	Double acting	8 bar	£509.54
500 228	8"	DN200	Double acting	7 bar	£721.88
500 229	10"	DN250	Double acting	5 bar	£745.18
500 230	12"	DN300	Double acting	5 bar	£1168.12
500 231	14"	DN350	Double acting	4 bar	£2003.10
500 232	16"	DN400	Double acting	4 bar	£2341.19



PN16/40 Stainless Steel Ball Valves

IFull Bore, Antistatic Firesafe Design, PTFE/Viton Seals, Flanged PN 16/ PN 40, iso 5211 Direct Mount

Also available with Single and Double acting actuators



500 310	1/2"	DN 15	40 bar	£133.12
500 311	3/4"	DN 20	40 bar	£159.88
500 312	1"	DN 25	40 bar	£198.15
500 313	1 1/4"	DN 32	40 bar	£251.11
500 314	1 1/2"	DN 40	40 bar	£331.40
500 315	2"	DN 50	40 bar	£428.10
500 316	2 1/2"	DN 65	40 bar	£618.80
500 317	3"	DN 80	16 bar	£792.84
500 318	4"	DN 100	16 bar	£1112.10
500 319	5"	DN 125	16 bar	£2014.11
500 320	6"	DN 150	16 bar	£2744.80
500 321	8"	DN 200	16 bar	£4802.12

Stainless Steel Ball Valves



One Piece Reduced Bore

Reduced bore, pressures up to 60 bar, ptfе seats, lockable handle

500 240	1/4"	60 bar	£9.12
500 241	3/8"	60 bar	£10.18
500 242	1/2"	60 bar	£11.89
500 243	3/4"	60 bar	£13.54
500 244	1"	60 bar	£19.88
500 245	1 1/4"	60 bar	£29.94
500 246	1 1/2"	55 bar	£37.19
500 247	2"	55 bar	£54.55



2 Piece Full Bore

Full bore BSP, pressures up to 70 bar, ptfе seats, lockable handle

500 248	1/4"	70 bar	£12.66
500 249	3/8"	70 bar	£12.66
500 250	1/2"	70 bar	£14.45
500 251	3/4"	70 bar	£18.89
500 252	1"	70 bar	£28.82
500 253	1 1/4"	70 bar	£42.11
500 254	1 1/2"	70 bar	£54.19
500 255	2"	70 bar	£81.56
500 256	2 1/2"	50 bar	£169.18
500 257	3"	50 bar	£241.88



3 Piece Full Bore

Full bore BSP, pressures up to 80 bar, ptfе seats, lockable handle

500 258	1/4"	80 bar	£26.92
500 259	3/8"	80 bar	£27.85
500 260	1/2"	80 bar	£33.97
500 261	3/4"	80 bar	£43.12
500 262	1"	80 bar	£52.98
500 263	1 1/4"	68 bar	£73.64
500 264	1 1/2"	68 bar	£109.19
500 265	2"	62 bar	£152.11
500 266	2 1/2"	55 bar	£328.92
500 267	3"	55 bar	£446.64
500 268	4"	55 bar	£787.14



3 Piece Full Bore With ISO5211 Top

Full bore BSP, pressures up to 80 bar, ptfе seats, lockable handle

500 270	1/4"	70 bar	£38.19
500 271	3/8"	70 bar	£42.34
500 272	1/2"	70 bar	£45.62
500 273	3/4"	70 bar	£56.15
500 274	1"	70 bar	£70.49
500 275	1 1/4"	70 bar	£98.68
500 276	1 1/2"	70 bar	£122.56
500 277	2"	70 bar	£174.85
500 278	2 1/2"	55 bar	£398.84
500 279	3"	55 bar	£484.56
500 280	4"	55 bar	£646.66



316 3 Way L or T Port Ball Valves

L T

500 281	500 282	1/4"	70 bar	£85.55
500 283	500 284	3/8"	70 bar	£85.55
500 285	500 286	1/2"	70 bar	£87.89
500 287	500 288	3/4"	70 bar	£97.88
500 289	500 290	1"	70 bar	£136.12
500 291	500 292	1 1/4"	70 bar	£174.19
500 293	500 294	1 1/2"	55 bar	£249.55
500 295	500 296	2"	55 bar	£368.88



Switchboxes for Actuators

500 297	IP67Nema4	Weatherproof Switchbox	£54.17
500 298		Intrinsically Safe Switchbox	£202.11
500 299	EEXD IIC T6	Explosion Proof Switchbox	£221.12



Namur Solenoid Valves

500 300	5/2, 3/2 Solenoid Spring	1/4 bsp	£42.56
500 301	5/2, 3/2 Solenoid/Solenoid Valve	1/4 bsp	£69.20
500 302	5/2, 3/2 Solenoid /Spring	Intrinsicall safe	£198.56
500 303	5/2, 3/2 Solenoid /Solenoid	Intrinsicall safe	£256.88
500 304	5/2, 3/2 Solenoid/Spring	EEXD IIC T6 Explosion Proof	£296.14
500 305	5/2, 3/2 Solenoid/ Solenoid	EEXD IIC T6 Explosion Proof	£346.11

available with 220vac, 110vac and 24vdc Coils, please state voltage when ordering