



FLEX 10

The Flex 10 is the entry level functional test system in our FLEX platform range. It is an ideal solution for housing the test hardware for use with bespoke test applications. It works well as a platform for Cell based test systems or for high volume single products.

Interface

Generally fitted with a VPC S6 Interface that allows up to 1440 test connections, the Interface provides long term reliability coupled with excellent Signal Integrity

Fixturing options could include:

- Plain Platten Fixture
- CAM or Pneumatic Operated Bed of Nails
- A Test Receiver option with low cost cassettes.

Another option is to replace the S6 Interface with VPC iCon connectors, a particularly useful option for module/system testing.

Controller

A compact test system calls for a compact controller so options include:

- PXI Slot 0 Controller
- External PC
- Internal BRIX PC

Instruments

Our systems are designed for PCI, PXI, LXI, GPIB or USB based Instruments. Any combination of these Instruments is possible, space being the only limiting factor.

Options that work well with the FLEX 10 are;

- 5 Slot Integrated PXI chassis
- NI Virtual Bench combining a number of Instruments into one low cost box.
- A FLEX PMU (Power Management unit) will usually be fitted for power control and cooling of the system.

- JTAG Boundary scan controller
- VPC DIOS Board

YAV modules complement the FLEX range perfectly offering Instruments and Relay switching on pcb's that screw directly into the VPC Interface. The boards are controlled with a two wire CAN bus for simplicity of installation and ease of service exchange. A wide range of YAV switching modules ensure suitability for any application and the best possible signal integrity with none of the cost or reliability problems normally associated with cabled systems.

Finally, add to the system a WriteNow! In system programmer that provides ganged programming of up to 8 parallel devices for virtually any protocol.





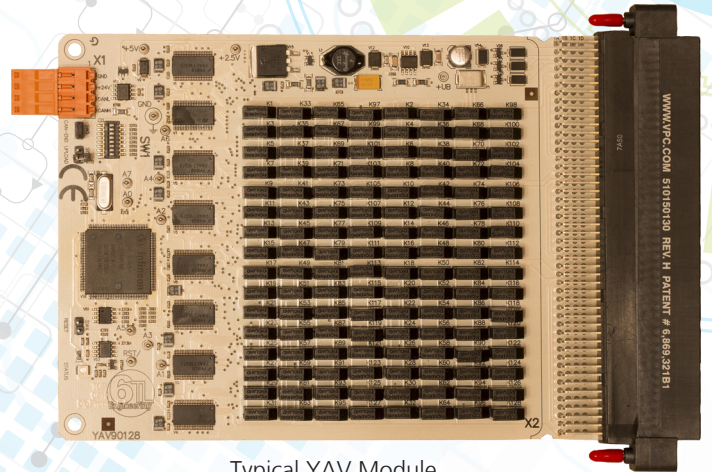
Software

We have developed the software for the FLEX range of ATE's over many years and view this as the most important part of the FLEX concept. Our aim has always been to create a system that meets the following criteria:

- Open Architecture
- Easy to use from day one
- High Level program commands to make program generation as quick as possible
- A software environment that can keep on growing.

Loaded FLEX software can include

- NI Teststand - Our test engine/sequencer that can easily interface to other software such as Labview, CVI, C++ DLL, Active X etc.
- FLEX Stand - Easily create amazing operator interfaces
- FLEX Drivers - Simple to use drivers designed to make Programming easy
- FLEX Testview - A web based package that can provide an Overview and Alarms for logged results.
- FLEX ATEasy - A text based programming language for Legacy Program conversions.



Typical YAV Module



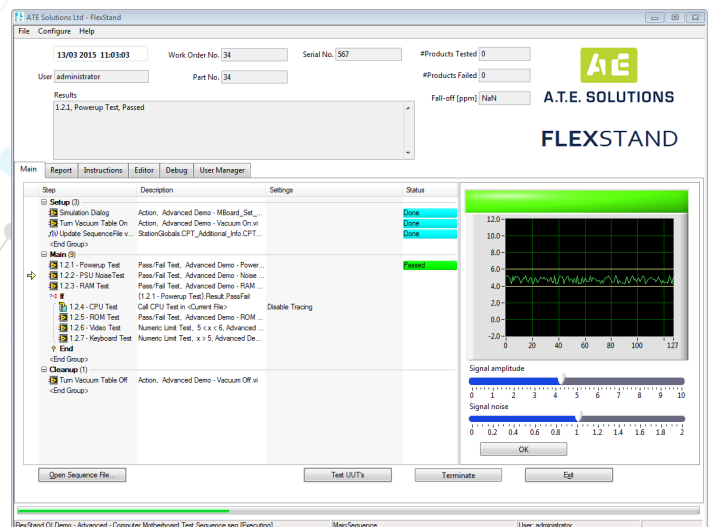
VPC iCon connector

System specification

Size : W 600 mm, D 450 mm, H 660mm
 Supply : Single Phase 230V, 13A, 50Hz Supply
 Weight : 40 Kgs (no instruments)



Write Now! - programming module



Flexstand - Operator Interface