



FLEX 50

The FLEX 50 is aimed at the final test of LRU's. The system can be configured with a range of analogue, digital, mixed-signal, and avionics test modules.

Interface

Flexibility is the key with system Interfacing. With a wide variety of connectors and cables available for testing final products the ability to "mix and match" is very important. The FLEX 50 might typically be fitted with VPC Interfaces that range from the 12 slot (G12) to the 75 Slot (9075) and cable connection solutions such as the iCon. All our solutions are designed for a long trouble free life and offer the best in Signal Integrity when mixing Analogue , Digital ,High Current, RF etc.



Controller

All options are possible in the FLEX 50 but they typically ship with.

- PXI Slot 0 Controllers
- Rack Mount Industrial PC's
- RAID arrays for reliable storage.
- System Back-up Solutions.

Instruments

Our systems are designed for PCI, PXI, LXI, GPIB or USB based instruments. Any combination of these is possible, the choices being made on performance and overall system footprint. Options that work well with the Flex 50 are:

- PXI Chassis
- The FLEX PMU (Power Management Unit) for power control and cooling management.
- YAV relay modules that fit directly to the VPC interface.
- Integration controllers such as the MARVIN TS710

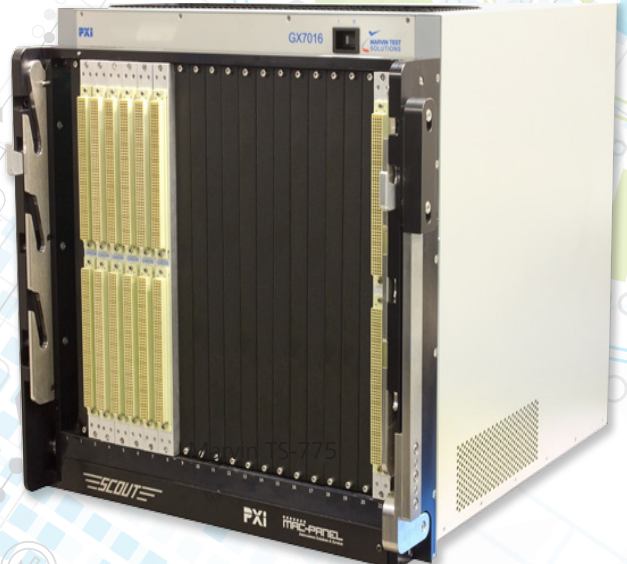


RF Test System



Integration

We can also integrate sub-systems from our partner, MARVIN TEST SYSTEMS. One example is the GX7016 which offers a new level of high performance, high density switching for board and system level functional test. Based on the 6U PXI architecture, the GX7016 incorporates a modular switch matrix and multiplexer architecture which supports up to 4608 multiplexed, hybrid I/O pins. Up to 128 external resources can be connected to any of the test system's receiver I/O pins via a high performance, internal 16 wire matrix bus. For digital test capability, the GX7016's switching subsystem can be connected to a digital subsystem such as Marvin Test Solutions' GX5960 digital subsystem, providing hybrid pin capability for each multiplexed I/O pin. Up to 288 digital channels are supported by the switching subsystem.



Marvin GX 7016

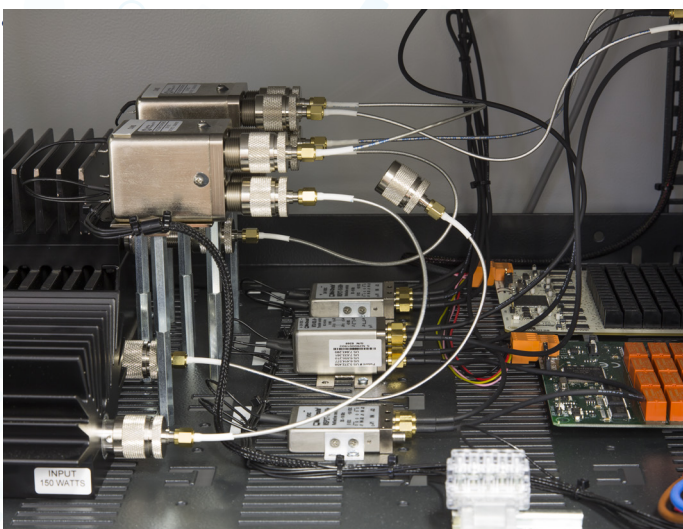
Software

Loaded FLEX software can include

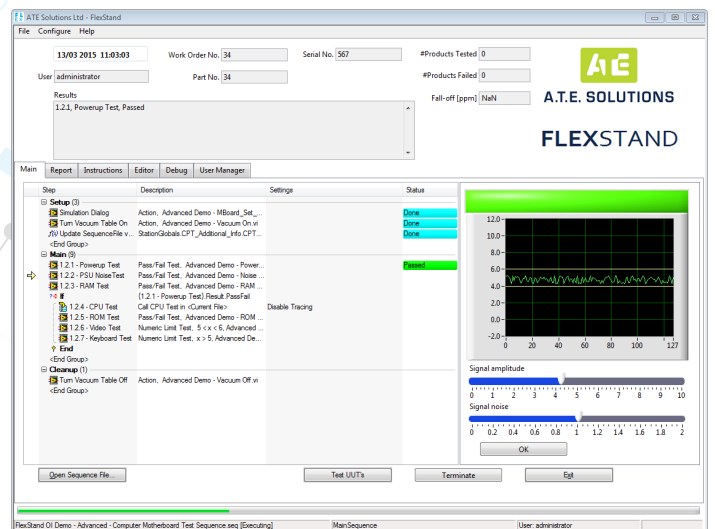
- NI Teststand - Our main operating sequencer that can easily Interface to any other software code from Labview to C++, DLL, Active X etc.,
- FLEX Stand - Easily create amazing operator interfaces
- FLEX Drivers - Simple to use drivers designed to make Programming easy
- FLEX Testview - A web based package that can provide an Overview and Alarms for logged results.



Marvin TS 710



Typical internal wiring



Flexstand - Operator Interface